



# Halton District School Board

## HALTON DISTRICT SCHOOL BOARD

J.W. Singleton Education Centre, 2050 Guelph Line, Burlington, Ontario

Wednesday, November 16, 2011

**Public Session: 7 p.m.** (Private Session begins at 6 p.m., preceding Public Session)

### PUBLIC SESSION AGENDA

<b>1.0 – Opening</b>		<i>estimated time</i>	<i>page</i>
1.1	Welcome, Call to Order and Roll Call	2 mins.	
1.2	Approval of the Agenda	3 mins.	
1.3	Declarations of Possible Conflict of Interest	2 mins.	
<b>2.0 – Delegations to the Board</b>			
2.1	Presentations		
2.2	Delegations	5 minutes each	<i>(info distributed to trustees only)</i>
2.2.1	Linda Bradley -- Milton School Name		
2.2.2	Madison McDonald, Justin Walter -- Milton School Name		
2.2.3	Shirley Dusmet – Milton School Name		
2.2.4	Peter Moffatt – Oakville School Name		
2.2.5	Captain Shawn Stuart – Oakville School Name		
2.2.6	Pam Calvert – Oakville School Name		
2.3	Acknowledgement of Delegations by the Chair		
<b>3.0 – Ratification / Action</b>		<i>estimated time</i>	<i>page</i>
3.1	Minutes of the Regular and Special Meetings	5 mins	
3.1.1	Halton District School Board Meeting, November 2, 2011		page 3
3.2	Approval of Business Transacted in Private Session	3 mins.	
3.3	Order Paper	2 mins.	page 7
3.4	Action Items	10 mins. ea.	
3.4.1	OFA Long-Term Debt Requirements (L. Veerman) – Report 11155		page 8 from Nov.2
3.4.2	Banking Resolutions (L. Veerman) Report 11154		page 13 from Nov.2
3.4.3	Naming New Schools (M. Denton) – Report 11160		page 20 from Nov.2
3.4.4	Referral to Committee (K. Bateman-Olmstead) – Report 11173		page 9
<b>4.0 – Communication to the Board</b>			<i>page</i>
4.1	Student Trustee Reports		
4.2	Information Items .	<i>(including Notices of Motion and future actions)</i>	
4.2.1	Notices of Motion		
	<b>For Action: December 7, 2011</b>		
4.2.2	Strategic Plan 2012-15 (D. Euale) – Report 11169		page 10
	<b>For Information</b>		
4.2.3	Bell Times (L. Veerman, S. Miller) – Report 11172		page 14
4.2.4	Revised: Upcoming Board Reports (D. Euale) Report 11170		page 17
4.2.5	Update: Operational Plans 2011-12 (J. Blackwell, D. Euale) – Report 11171		page 22
4.2.6	ERA 120 (Milton 7) Design Plans (G. Cullen) – Report 11163		page 40
4.2.7	Capital Update (G. Cullen) – Report 11165		page 45
4.2.8	Drinking Water Testing (G. Cullen) – Report 11162		page 54
4.3	Committee Reports		

**4.0 – Communication to the Board (continued)** **page**

- 4.4 Director’s Report
  - 4.4.1 Monitoring Reports
  - 4.4.2 Other:
    - 4.4.2.1 Upcoming Items:      • *Safe Schools*      • *E-learning*      • *PARC Policy Review*
- 4.5 Communications from the Chair *5 mins.*
- 4.6 Trustee Questions and Comments *10 mins.*

**5.0 – Adjournment**

- 5.1 Motion to Adjourn

**HALTON DISTRICT SCHOOL BOARD**

Wednesday, November 2, 2011

**7 p.m. – Public Session**

**MINUTES**

**1.0 -- Opening**

- 1.1 Welcome, Call to Order and Roll Call
- 1.2 Approval of the Agenda
- 1.3 Declarations of Possible Conflict of Interest

**2.0 – Communication to the Board**

- 2.1 Presentations
- 2.2 Delegations
- 2.3 Acknowledgement of Delegations by Chair

**3.0 – Ratification / Action**

- 3.1 Minutes of the Regular and Special Meetings
  - 3.1.1 Meeting of the Halton District School Board, October 5, 2011
- 3.2 Ratification of Business Transacted in Private Session
- 3.3 Order Paper
- 3.4 Action Items

**4.0 – Communication to the Board**

- 4.1 Student Trustee Reports
- 4.2 Information Items (including Notices of Motion and future actions)
  - 4.2.1 Notices of Motion
    - For Action**
    - 4.2.2 OFA Long-Term Debt Requirements (*L. Veerman*) – Report 11155
    - 4.2.3 Banking Resolutions (*L. Veerman*) – Report 11154
    - 4.2.4 Naming New Schools (*M. Denton*) – Report 11160
    - For Information**
    - 4.2.2 Pathways Hazard Criteria (*L. Veerman*) -- Report 11156
    - 4.2.3 Gardiner Pilot Update (*G. Cullen*) – Report 11158
- 4.3 Committee Reports
- 4.4 Director's Report
  - 4.4.1 Monitoring Reports
  - 4.4.2 Other
    - 4.4.2.1 Upcoming Items:
      - *Strategic Plan*
      - *Operational Plans*
      - *Safe Schools*
      - *Pathway Hazard Criteria*
- 4.5 Communications from the Chair
- 4.6 Trustee Questions and Comments

**5.0– Adjournment**

- 5.1 Motion to Adjourn

**Halton District School Board**  
**Wednesday, November 2, 2011**

Present: K. Amos, K. Bateman-Olmstead, D. Bower, A. Collard, D. Danielli, J. Hlusko, A. Harvey Hope,  
K. Lochhead, N. MacNeill, D. Vrooman, R. Unni, J. Earl

Regrets:

---

**Agenda Item 1**

1.1 Call to Order

D. Vrooman called the meeting to order at 6:15 p.m.

M11-0184 K. Bateman-Olmstead / A. Collard

Be it resolved that the Halton District School Board move into Private Session.

**Carried.**

The Board rose from Private Session at 7:30 p.m., and called Public Session to order at 7:43 p.m.

1.2 Approval of the Agenda

M11-0185 D. Danielli / A. Collard

Be it resolved that the Halton District School Board amend the agenda to switch the order for 4.2.5 and 4.2.6, and that the agenda for November 2, 2011, be approved as amended.

**Carried.**

**Agenda Item 2**

The Chair introduced Jacki Oxley and Elena DiBattista who provided a report on the Our Kids Network. They responded to trustee questions. A request was made to share school data with trustees. An update re: availability of that data will be provided to trustees at the next meeting.

There were no delegations.

**Agenda Item 3**

3.1 Approval of the Minutes

M11-0186 K. Amos / K. Lochhead

Be it resolved that the minutes for the Meeting of the Halton District School Board for October 19, 2011 be amended to note D. Danielli's absence, and that the minutes be approved as amended.

**Carried.**

3.2. Ratification of Business Transacted in Private Session

M11-0187 K. Amos / A. Collard

Be it resolved that the Halton District School Board approve the resolutions from the Halton District School Board Meeting in Private Session, November 2, 2011 respecting: Negotiations.

**Carried.**

3.3. Order Paper

The Chair called attention to the Order Paper.

3.4. Action Items

There were no action items on the evening's agenda.

**Agenda Item 4**

4.1 Student Trustee Reports

Jason Earl and Rudy Unni provided an overview of the recent student survey results. They responded to trustee questions related to this topic.

4.2 Information Items (including Notices of Motion)

4.2.1 Notices of Motion

A. Collard brought forward a Notice of Motion regarding a report on the IB program.

M11-0188 G. Tuck Kutarna / A. Collard

Be it resolved that the Halton District School Board waive the rules to deal with this matter this evening. **Carried.**

M11-0189 A. Collard / D. Bower

Be it resolved that the Director of the Halton District School Board be directed to prepare a report regarding the IB Program, and that the report include recommendations, and that this report come to trustees no later than February, 2012. **Carried.**

**For Action: November 16, 2011**

4.2.2 OFA Debenture Issue

L. Veerman spoke to Report 11155, and responded to trustee questions.

4.2.3 Banking Resolutions

L. Veerman spoke to Report 11154, and responded to trustee questions.

4.2.4 Naming New Schools

M. Denton spoke to Report 11160, and responded to trustee questions.

K. Bateman-Olmstead indicated her desire to see the Administrative Procedure regarding Naming New Schools referred to the Policy, By-law and Governance Committee for consideration as a Policy rather than an Administrative Procedure.

D. Danielli spoke to her experiences on the naming committee, in response to trustee questions. J. Earl indicated he would be sharing the naming proposals with the Student Senate.

J. Hlusko left the meeting at 9:20 p.m.

**For Information**

4.2.5 Gardiner Pilot Update

J. Blackwell spoke to Report 11158 and responded to trustee questions.

M11-0190 A. Collard / K. Amos

Be it resolved that the Board extend the meeting beyond 10 p.m.

**Carried.**

N. MacNeill left the meeting at 10 p.m. R. Unni left the meeting at 10:02 p.m.

4.2.6 Pathways Hazard Criteria

L. Veerman spoke to Report 11156 and responded to trustee questions.

4.3 Committee Reports

A. Collard reminded trustees of the subcommittee meeting this week re: Trustee Expenses.

K. Amos spoke to the recent success of the PIC Conference and HLF Dinner.

D. Danielli spoke to OPSBA events and activities.

K. Lochhead spoke to this month's SEAC meeting and presentations.

A. Harvey Hope spoke to upcoming committee meetings and dates including PB&G and Code of Conduct.

4.3 Committee Reports (cont'd)

G. Tuck Kutarna spoke to past practice of a written report summarizing committee activities, and a suggestion to reinvestigate the practice.

D. Vrooman reminded trustees of the now-available date of November 9 for committees.

4.4 Director's Report)

D. Euale reminded trustees of the need for a special Board meeting on November 30 to consider the year-end financial statements.

4.5 Communications from the Chair

The Chair highlighted information that had been recently received.

4.6 Trustee Questions and Comments

K. Amos asked about "super seniors" and the 4-year or 5-year path for secondary students, suggesting data needs to be compiled regarding this phenomenon. J. Earl also spoke to the issue from a student perspective.

G. Tuck Kutarna shared the Oakville Community Foundation 2011 report.

A. Harvey Hope added to the conversation regarding secondary student pathways.

G. Tuck Kutarna requested a review and further conversation regarding action items coming to the Board. It was decided the matter would be referred to PB&G at a discussion on November 9.

M11-0191 D. Danielli / A. Collard

Be it resolved that the Halton District School Board rise and reconvene in Private Session. **Carried.**

The Board rose from Private Session at 10:53 p.m.

M11-0192 K. Amos / K. Lochhead

Be it resolved that the Halton District School Board approve the resolutions from the Halton District School Board Meeting in Private Session, November 2, 2011 respecting: Personnel Matters **Carried.**

**Agenda Item 5**

M11-0193 A. Harvey Hope / K. Lochhead

Be it resolved that the Halton District School Board adjourn at 10:55 p.m.

**Carried.**

..... Recorder

.....Chair



# Halton District School Board

Wednesday, November 16, 2011

(Items shaded and/or marked in bold have been completed and will be deleted from the list prior to the next edition.)

## ORDER PAPER

Motion #	Resolution	Responsibility
M07-0056	Be it resolved that when remedies for heavily populated schools are next considered, Post's Corners Public School will be included using policies and practices prevailing at that time.	Senior Admin./ Facility Services
M11-0010	Be it resolved that the Halton District School Board appeal the notice of intention by the Town of Oakville to designate Linbrook Public School at 1079 Linbrook Road, issued under Section 29, Part IV of the Ontario Heritage Act.	Superintendent of Business / Planning
M11-0020	<p>Be it resolved that the Halton District School Board provide transportation for students identified in Report 11019, to and from Brookville Public School until the end of the school year; and            THAT during this time, the Director of Education bring a report to the Board regarding the criteria applicable to the term "exceptionally hazardous conditions", including the specific safety criteria applied to non-paved pathways, non visible pathways and pathways through wooded areas.</p> <p><i>Note: Original motion (M11-0019 – below) was deferred for three months.</i></p> <p>Be it resolved that the Halton District School Board approve an exception to the Halton District School Board Transportation Policy, such that all Brookville Public School students in Grades JK to 8 who live on the East side of Guelph Line between 15th Sideroad and Brookville Public School and who reside in the Churchill Estates subdivision will be transported to school by a bus provided by the Halton District School Board;            AND THAT the exception remain in effect until significant changes occur to address safety concerns identified in Report 11019.</p>	Superintendent of Business / Director of Education
M11-0021	<p>Be it resolved that the aforementioned motion (M11-0026:....<i>"that the Board recommend to the Halton Transportation Consortium that it implement an adjudication process for disputed walking distances"</i>)            No Action taken referred to a Committee of the Whole Board for further discussion</p>	Trustees
M11-0086	<p>Be it resolved that the Director recommend a procedure by which any secondary school Principal can request of their Superintendent a change in school start time to a later start time, to include a process for:            (a) parent consultation; (b) student input; (c) school staff input; (d) notification of the School Council and Trustee; and (e) assessing impact on transportation costs;            And that this recommendation be brought to the Board of Trustees for approval by no later than October 2011.</p> <p>Be it resolved that the Halton District School Board that at any time prior to approval of the procedure referred to in paragraph 1, any secondary school Principal may direct a request for a change in school start time to the Director of Education, and the Director will bring this request to the attention of the Board of Trustees along with a recommendation in response to the request.</p>	Director of Education

Pending Reports: November 16, 2011

## PENDING REPORTS

*(Items will be shaded when completed, with a check-mark placed beside the presentation date.)*

Motion & Date	Resolution	Presentation Date
M09-0014	Be it resolved that the Director report quarterly to the Board of Trustees regarding implementation, compliance & efficacy of the recommendations/management responses identified in Report 09011, Appendix A. (School Council & School Generated Funds)	April 2011 ✓
M10-0188 M10-0189	<b>Be it resolved that the Halton District School Board establish a “Good Neighbour” Policy for Oakville and other municipalities as deemed appropriate, and that this policy ensure that neighbours living “next to” and “with-in” the direct vicinity of a Public School Site be consulted at the initial stages of any “new school build” and; Be it resolved that reasonable input from community members be considered prior to the completion of any extensive, costly architectural work.</b>	To Program & Accommodation Committee (September 22) <b>Deferred to December PAC meeting; Board in January/February 2011</b>
M11-0045	<b>Be it resolved that the Halton District School Board direct the Director to provide a report of possible actions to substantially reduce the list and waiting times, and the associated cost, including recommendations for sustainability and have the report brought back to the Board for an initial report in March, and a follow-up report following SEAC consultation in early May.</b>	March 2011 ✓ May 2011 ✓
M11-0046	<b>Be it resolved that the Director confirm for the Board of Trustees, by no later than May 1, 2011, that all Halton District School Board secondary schools are implementing the annual school year calendar, and in particular the days designated for exams and exam feedback to students, in a way which fully enables our commitment to student success and in accordance with the requirements of the Education Act.</b>	May 2011 ✓
M11-0059	<b>Whereas early intervention is important to the success of all students, be it resolved that the Halton District School Board direct the Director to provide a report on</b> <ul style="list-style-type: none"> <li>• interventions provided prior to formal assessment, including remediation and intervention strategies at the classroom, school and system level</li> <li>• a gap analysis and recommendations with associated costs to implement the recommendations</li> <li>• the aggregate ESAT results of Grade 1 and 2 students who have been identified as NYR (Not Yet Ready) or Level 1.</li> </ul> <b>And that the report be brought back to the Board no later than the end of September 2011.</b>	September 2011 <i>(Scheduled for presentation to Board in October 2011, as per Board Report schedule in Report 11123)</i> ✓
M11-0088	<b>Be it resolved that a recommendation be brought back to the Halton District School Board with respect to continuation or cancellation of the cashless school program, no later than February 2012.</b>	February 2012
M11-0136	Whereas the 2011/12 Operating Budget has a provision to reduce the System Principal for FSL/ELL to a 0.5 FTE position, and there are many different initiatives and programs currently in progress and also coming from the Ministry regarding FSL and ELL, and the Halton District School Board has increasing numbers of FSL and ELL students, Be it resolved that the Associate Director bring back a report in January 2012 regarding how the reduction to 0.5 FTE System Principal FSL/ELL has affected the ability to plan and implement Ministry and Board initiatives related to the French Second Language and English Second Language portfolio.	January 2012
M11-0139	Whereas the Halton District School Board is committed to expanding its capacity on offer online credits; therefore, Be it resolved that the Director bring a report to the Board of Trustees by November 2011 outlining the Board's implementation plan, including staffing and resource needs, to ensure a comprehensive calendar of online learning courses to be made available to Halton District School Board students, and That this report include a timeline for full implementation, and include a mechanism for incorporating student and staff feedback with regard to their learning experiences.	November 2011
M11-0189	Be it resolved that the Director of the Halton District School Board be directed to prepare a report regarding the IB Program, and that the report include recommendations, and that this report come to trustees no later than February 2012.	February 2012



# Halton District School Board

---

Report Number: 11173

Date: November 9, 2011

**INFORMATION FOR DECISION**

TO: The Chair and Members of the  
Halton District School Board

FROM: K. Bateman-Olmstead, Trustee, Oakville Ward 4

RE: Referral to Policy, By-Law & Governance: "Naming Schools"

---

**Recommendation:**

*Be it resolved that the Administrative Procedure "School Naming" be referred to the Policy Bylaw and Governance Committee for review.*

---

Rationale

The school naming process is currently an administrative procedure. It became effective in 2003. It is written as a highly prescriptive procedural process and is titled an "administrative procedure", not a policy.

Many of the end users consider it a policy and therefore a review of the intent and content contained within the procedure is required to provide clarity and instruct next steps.

*Respectfully Submitted,*

A handwritten signature in black ink, appearing to read 'K. Bateman-Olmstead', written over a horizontal line.

*K. Bateman-Olmstead  
Trustee, Oakville Ward 4*



# Halton District School Board

---

Report Number: 11169

Date: November 9, 2011

## **INFORMATION FOR DECISION**

TO: The Chair and Members of the  
Halton District School Board

FROM: D. Euale, Director of Education

RE: Strategic Plan 2012-15

---

### **Recommendation:**

*Be it resolved that the Halton District School Board adopt the Strategic Plan for 2012-15 as appended to Report 11169.*

---

### **Background**

The revision of the Halton District School Board's Strategic Plan began earlier this year with trustees and senior administrative staff reviewing the current plan, and soliciting input from staff and members of the public regarding the Board's current mission statement and values. Dozens of people responded to the web survey, and this framed further discussions to revise the strategic plan for the upcoming years.

In early Spring, Trustees and senior administrative staff participated in a number of facilitated sessions to set future strategic direction for the Halton District School Board. A review of the input received and the current strategic planning document was the foundation for significant discussion and dialogue. It resulted in the following revisions forming a proposed Strategic Plan for the upcoming four years.

---

The Halton District School Board is committed to every student.

We will

- inspire and support learning;
- create safe, healthy, inclusive and engaging environments
- provide opportunities for challenge and choice
- prepare students for success
- 

We value *and respect*

### **Relationships**

*therefore, we will*

- build and maintain partnerships
- encourage cooperation, collaboration and compassion
- communicate effectively
- align our words and actions
- acknowledge and appreciate diversity

## Responsibility

*therefore, we will*

- measure and report results
- use resources effectively
- respond to demographic needs
- operate in an open and transparent manner
- model sound environmental practices
- make timely and informed decisions
- promote social responsibility

## Ingenuity

*therefore, we will*

- foster creativity, innovation and initiative
- identify, develop, share and implement exemplary practices
- establish responsive practices to address divergent learning needs
- recognize ideas, efforts, and results

### Feedback:

Following these facilitated discussions, further input into the revised Strategic Plan was sought from staff, students, parents and community through a month-long survey posted on our website. Limited responses were received but most were very positive.

The following comments are a sampling of the feedback obtained:

*In response to “what components are important to you?”*

- “The entire document is important to me as it represents what the Board and all its employees vow to achieve (or at least work towards).”
- “Valuing relationships, promoting student success, inclusivity, effective communications...”
- “Relationships are key; committed to every student added the words “we will” – very positive”
- “Emphasized safe, healthy, inclusive and engaging...”
- Let’s change the word

*In response to “is there anything missing?”*

- “Let’s change the word “diversity” to “equity and inclusion” to align our language with the Ministry strategy on Equity and Inclusive Education
- “When it reads ‘*prepare students for success*’, it seems like a vague statement. What is success? Perhaps it would be better to qualify it as “prepare our students to participate in a world outside of school.”
- “Creating a balance between curricular demands of the classroom and the affective part of the curriculum.”
- “Creating a safe, positive, inclusive sense of belonging for students.”
- Change the word “strategic plans” to “strategic directions” as this is not a plan, but a sense of values articulated.

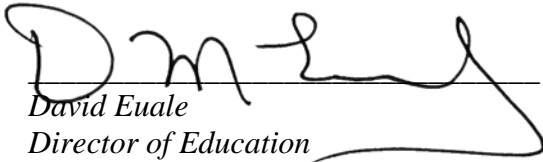
*In response to “other comments”:*

- “I believe the *recognize ideas, efforts and results* should be for all areas, not just ingenuity.”
- “The strategic plan reads well... the operating plan needs to be congruent with the strategic plan.”
- “This reads more like a mission and vision statement rather than a strategic plan.”
- “Why do you “encourage” cooperation, collaboration and compassion? Is this not an expectation? Should it be an expectation?”

Next Steps:

The collaboration between the components of our system combine to create the synergy of an effective strategic plan. The 2012-15 Strategic Plan will be the foundation of our operational plans beginning in September 2012. Details on the development process for these plans will be presented by the Director at a future meeting.

*Respectfully Submitted,*



David Euale  
Director of Education



# Halton District School Board

---

Report Number: 11172

Date: November 9, 2011

## INCIDENTAL INFORMATION

TO: The Chair and Members of the  
Halton District School Board

FROM: Stuart Miller, Superintendent of Schools  
Lucy Veerman, Superintendent of Business Services

RE: Request to Change Bell Times

---

### Background

At the Halton District School Board meeting of May 18, 2011, motion M11-0086 was approved:

*Be it resolved that the Director recommend a procedure by which any secondary school Principal can request of their Superintendent a change in school start time to a later start time (eg. after 8:30 a.m.), to include a process for:*

- (a) parent consultation;*
- (b) student input;*
- (c) school staff input;*
- (d) notification of the School Council and Trustee;*
- (e) assessing impact of transportation costs;*

*And that this recommendation be brought to the Board of Trustees for approval by no later than October 2011.*

*Be it resolved that the Halton District School Board that at any time prior to approval of the procedure referred to in paragraph 1, any secondary school Principal may direct a request for a change in school start time to the Director of Education, and the Director will bring this request to the attention of the Board of Trustees along with a recommendation in response to the request.*

### Situation

At present the initiation of a change in Bell times can come from school council through the school Principal, to the broader school community. It may also be initiated by the Principal of the school and then disseminated to the broader community.

Once a new bell time has been suggested by the school administration the following process is generally implemented:


- The change in bell time may be presented and discussed at School Council
- Student population may be surveyed with respect to the change
- Parent community may be surveyed with respect to the change

- Trustee may be consulted with respect to the change
- Superintendent is consulted with respect to the requested change
- The request is submitted to the HSTS (Halton Student Transportation Services) consortium no later than February of the school year prior to the September implementation of the following school year
- HSTS consortium undertakes a full cost analysis to assess the financial impact of changing bell times on the existing routes servicing both the elementary and secondary schools in the area from which the request originated.. The number of schools impacted by a single transportation route can vary from a minimum of one school to a maximum of seven schools in a single day. In addition, the transportation routes can include students from all four boards in the consortium. The cost analysis includes a review of the increase/decrease in the number of vehicles, impact on the length of time the bus is in use, and the resulting change in cost for all four boards included in the consortium.
- A summary of the financial impact is presented to Administrative Council for decision. Generally, requests that result in a significant increase in transportation costs for boards included in the consortium and reduce routing efficiencies are not supported.
- The school will be provided with a response to the request in April or May of the same year as the request was made.
- Confirmation of bell times for the following school year are provided to the schools in May/June.

Conclusion

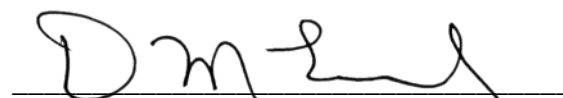
An Administrative Procedure outlining the process for consideration on High School bell time based on the criteria identified in motion M11-0086 has been prepared.

*Respectfully submitted,*



---

Stuart Miller  
Superintendent of Schools



---

David Euale  
Director of Education

---

Lucy Veerman  
Superintendent of Business Services

<b>NUMBER:</b>	<i>To be determined</i>
<b>TOPIC</b>	<b>High School Bell time changes</b>
<b>EFFECTIVE:</b>	<b>September 2012</b>
<b>CROSS-REFERENCE:</b>	<b>Education Act Regulation 298</b>
<b>REVIEW/REVISION DATE:</b>	<b>September 2013</b>
<b>Responsibility:</b>	<b>Superintendent of Education Superintendent of Business Services</b>

**INTENDED PURPOSE:**

The Halton District School Board is committed to providing the best educational opportunities and learning environment for its students. There are occasions where high schools and their communities may request a change in their bell times to accommodate the academic needs of their students.

These requests may vary from school to school, as reflected by the unique characteristics of each school and the community in which they are placed. There are numerous stakeholders that may be impacted by the bell times of the local High School. These include, the students, the staff, the parents, the feeder schools, co-terminus Boards (as it pertains to transportation) and transportation.

**PROCEDURES:**

The initiation of the change for Bell times would be brought to the community from the Principal to the school council and the broader school community. The Principal is also responsible for submitting the request to HSTS.

The following process will be followed by the school prior to recommending a change in bell times. This process is not in chronological order, but all steps must be completed

- The Principal will consult with the school council
- The Principal will solicit input from the student body. Possible methods for this input could include: school wide or grade assemblies, student focus groups, social media, student town hall, polling of students, access to a link on school's website
- The Principal will solicit input from staff. Possible methods for input could include: internal messaging such as CHATT, school leadership team, staff meetings, polling staff
- The Principal will solicit input from the parent community. Possible methods for input could include: school newsletter, parent evening, synervoice message, through school council, social media, school's website
- The Principal will solicit input from local trustee
- Prior to submitting recommended bell time changes, the Principal will present input from all of the above to the school council.
- Consultation and approval of the recommended change, by the Family of School Superintendent must occur prior to submission to the HSTS.

- The principal will inform feeder schools of recommended change prior to submitting the request
- The request will be submitted by the Principal to the HSTS (Halton Student Transportation Services) consortium no later than February of the school year prior to the September implementation of the following school year. The submission will identify the parameters that will be used to calculate the financial impact of the requested change.
- HSTS consortium will undertake an analysis of the impact of the suggested bell time changes, including the effect on existing routes, the bell times of affected schools, and any additional transportation charges.
- Results of the cost analysis prepared by the HSTS consortium will be reviewed by Administrative Council and the Director will bring this request to the attention on the Board of Trustees along with a recommendation in response to the request. This analysis will be presented to Administration Council by the end of March.



# Halton District School Board

---

Report Number: 11170

Date: November 9, 2011

**INCIDENTAL INFORMATION**

TO: The Chair and Members of the  
Halton District School Board

FROM: D. Euale, Director of Education

RE: Reports to Board (revised)

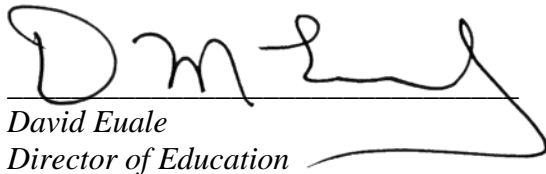
---

Background

In August, Report 11123 was presented to the Board outlining upcoming reports (incidental and for decision) for the 2011-12 school year. It was indicated revisions to the reporting timetable would be reviewed and revised in context with other obligations.

A review of the reporting timelines has been undertaken with some modifications made in terms of timing. The revised outline is appended to this report for the information of trustees.

*Respectfully Submitted,*

  
David Euale  
Director of Education

**REVISED: REPORTS TO BOARD 2011-12**

**(Appendix to Report 11170)**

<b>REPORT SUBJECT</b>	<b>DATE:</b>	<b>RESPONSIBILITY</b>	<b>COMMENTS</b>
Special Education Plan	August	David Boag	<ul style="list-style-type: none"> <li>• For Board Approval</li> <li>• Submitted to Ministry– Sept. 1.</li> </ul>
September staffing adjustments	September	HR	<ul style="list-style-type: none"> <li>• For information to 2nd Sept. Board mtg.</li> </ul>
Equity & Inclusion (Aboriginal/GSA/ELL)	September	Yaw Obeng	<ul style="list-style-type: none"> <li>• Info report on 2010-11+; for info. 2011-12.</li> </ul>
Full-Day Kindergarten	September	Mark Zonneveld Gerry Cullen	<ul style="list-style-type: none"> <li>• Update report for 2011–2012</li> <li>• Report on # of schools, # of classes, class size.</li> <li>• Renovations complete</li> </ul>
Strategic Plan (draft – approval)	<b>REVISED: NOVEMBER</b>	David Euale	<ul style="list-style-type: none"> <li>• Draft shared with trustees in early August and posted on web site</li> <li>• Draft shared with administrators at Leaders’ Conference Aug. 22.</li> <li>• Final approval by Board</li> </ul>
***Trustee Orientation: School Operations	<b>REVISED: JANUARY 18</b>	Stuart Miller Yaw Obeng	<ul style="list-style-type: none"> <li>• Workshop: Elementary and secondary issue</li> <li>• Teacher Performance Appraisal</li> </ul>
Operational Plan 2011-12	October	Jeff Blackwell	<ul style="list-style-type: none"> <li>• Draft plan modified to reflect 2011-12 budget</li> </ul>
EJ James Expenditures Report	completed (PS)	Gerry Cullen	<ul style="list-style-type: none"> <li>• As per Board motion</li> </ul>
EQAO	October	Jeff Blackwell	<ul style="list-style-type: none"> <li>• Comprehensive report of EQAO results.</li> <li>• Progress of sub group</li> <li>• Sharing results + next steps</li> <li>• Board wide – disaggregated data (info report)</li> </ul>
Early Intervention	October	David Boag	<ul style="list-style-type: none"> <li>• Report in response to Board motion</li> <li>• How do we assess our students?</li> <li>• How do we identify students who are experiencing difficulties?</li> <li>• Pyramid of Interventions</li> <li>• Report for information</li> </ul>
Safe Schools	<b>REVISED: DECEMBER 7</b>	Odette Bartnicki	<ul style="list-style-type: none"> <li>• Data on suspension and expulsion</li> <li>• Information on Safe Schools – SSAT</li> <li>• Preventative strategies – programs</li> <li>• Report for information</li> </ul>

REPORT SUBJECT	DATE:	RESPONSIBILITY	COMMENTS
School Climate	<b>REVISED: DEC. 7 with Safe Schools</b>	Stuart Miller	<ul style="list-style-type: none"> <li>Based on “<i>Tell them from me</i>”</li> <li>For information – First Year of TTFM</li> </ul>
Pathways Hazard Criteria	<b>REVISED: NOVEMBER</b>	Lucy Veerman	<ul style="list-style-type: none"> <li>As per Board Motion</li> <li>Report from HSTS</li> </ul>
Disposition of Property Report	<b>REVISED: NOVEMBER</b>	Lucy Veerman	<ul style="list-style-type: none"> <li>List of surplus properties</li> <li>Status report on sales</li> </ul>
Food Services	<b>REVISED: NOVEMBER</b>	Gerry Cullen	<ul style="list-style-type: none"> <li>Report on contracted school cafeterias</li> </ul>
Program Accommodation Review Committee (PARC) Policy Boundary Review – Admin Procedure	November  (done Sept)	Lucy Veerman Jeff Blackwell David Euale	<ul style="list-style-type: none"> <li>For decision</li> <li>Revised PARC policy for Board approval</li> <li>Review of boundary; review Admin Procedures.</li> </ul>
Site Acquisitions	November	Lucy Veerman	<ul style="list-style-type: none"> <li>Milton 7 + 8 site purchases</li> </ul>
Financial Statements	November	Lucy Veerman	<ul style="list-style-type: none"> <li>2010-11 Year-end audited statement</li> <li>Decision re surplus or deficit</li> </ul>
E-Learning	November <b>DECEMBER 7</b>	Dane Tutton	<ul style="list-style-type: none"> <li>Response to board motion</li> <li>Status report for 2011-12, 2012-13 plans</li> </ul>
Acceleration Pilot	November	Jeff Blackwell	<ul style="list-style-type: none"> <li>Response to Board motion</li> <li>Pilot for vertical acceleration (progress report)</li> <li>Implementation update</li> </ul>
Principal/Vice-Principal Placements/Transfer	November	Odette Bartnicki Tricia Dyson	<ul style="list-style-type: none"> <li>P/VP Pool appointment</li> <li>Placement for 2nd semester</li> </ul>
LTAP	December	Lucy Veerman	<ul style="list-style-type: none"> <li>Long-Term Accommodation Plan Update</li> <li>Single public meeting</li> </ul>
Revised Estimates	<b>REVISED: JANUARY</b>	Lucy Veerman	<ul style="list-style-type: none"> <li>2011-2012 revenue projections based on October 31 actual and March 31 projected</li> <li>Report due to ministry</li> <li>Report on expected surplus/ deficit to Board</li> </ul>
Student Fees	December	Stuart Miller Jeff Blackwell Lucy Veerman	<ul style="list-style-type: none"> <li>Report: 1st year implementation (student fee subsidy)</li> <li>Data on expenditures and impact on course/ student fees</li> </ul>

REPORT SUBJECT	DATE:	RESPONSIBILITY	COMMENTS
Bell Times	<b>REVISED: NOVEMBER</b>	Stuart Miller Lucy Veerman	<ul style="list-style-type: none"> <li>• In response to Board motion</li> <li>• Protocol established for changing school start time and bus schedules.</li> </ul>
School Generated Fund	December	Lucy Veerman	<ul style="list-style-type: none"> <li>• Summary of Revenues + Expenditures</li> </ul>
FSL	<b>REVISED: JANUARY</b>	Jeff Blackwell	<ul style="list-style-type: none"> <li>• Based on Board motion</li> <li>• To review the leadership of this initiative</li> <li>• Update on FSL initiatives and the need for .5 to 1.0 System Principal</li> </ul>
Director's Annual Report Operational Plan 2010-2011	December	David Euale	<ul style="list-style-type: none"> <li>• Mandated Director's Report to the Board/ public.</li> <li>• Operational Plans</li> </ul>
Full Day Kindergarten additions	December	Gerry Cullen	<ul style="list-style-type: none"> <li>• Award of tenders for FDK additions</li> </ul>
Renewal	January	Gerry Cullen	<ul style="list-style-type: none"> <li>• List of projects approved and the criteria used.</li> </ul>
Full-Day Kindergarten	January	Mark Zonneveld	<ul style="list-style-type: none"> <li>• Plan for 2012 – 2013 implementation.</li> </ul>
Budget Schedule	January	Lucy Veerman	<ul style="list-style-type: none"> <li>• Schedule of Board workshops</li> <li>• Details on consultations</li> </ul>
SRA Burlington (Alton) Elementary Boundaries	January	Rob Eatough	<ul style="list-style-type: none"> <li>• Boundary Review Committee to bring recommendations to the Director by December</li> <li>• Board to approve boundaries.</li> </ul>
****Trustee Orientation: Leadership	January	Tricia Dyson	
Director's Performance Appraisal	February	David Euale	<ul style="list-style-type: none"> <li>• Report to Board's DPA committee</li> </ul>
Cashless Schools	February	Lucy Veerman	<ul style="list-style-type: none"> <li>• Comprehensive review/ impact of cashless schools</li> <li>• Plan for future implementation for decision</li> </ul>
Current Status of ICT	February	Bruce Smith	<ul style="list-style-type: none"> <li>•</li> </ul>
International Baccalaureate Program	February	Jeff Blackwell	<ul style="list-style-type: none"> <li>• Program info; graduate pathways</li> </ul>
*Trustee Orientation: Human Resources	March	Debra McFadden	
ICT Vision	March	Bruce Smith	<ul style="list-style-type: none"> <li>•</li> </ul>
Sustainability	March	David Euale	<ul style="list-style-type: none"> <li>• Sustainability Progress Report</li> <li>• Financial Implications</li> </ul>
How to achieve the ICT vision	April	Bruce Smith	

<b>REPORT SUBJECT</b>	<b>DATE:</b>	<b>RESPONSIBILITY</b>	<b>COMMENTS</b>
Alton Secondary Boundaries	May	Rob Eatough	<ul style="list-style-type: none"> <li>• Established 1-year prior to school opening</li> <li>• Committee established and working throughout year</li> <li>• Committee reports to Director by April 30, 2012</li> <li>• Board to approve boundaries in June</li> </ul>
Principal/Vice-Principal Placements/Transfer	May	Odette Bartnicki	<ul style="list-style-type: none"> <li>• Placement/promotion effective for Sept. 2012.</li> </ul>
Board Admin. Accommodation	May	G. Cullen L Veerman D. Boag T. Dyson HR	<ul style="list-style-type: none"> <li>• Committee established to review the need for admin office space</li> <li>• Review of space available</li> <li>• Preliminary report to Board</li> </ul>
Budget	Feb.-June	Lucy Veerman	<ul style="list-style-type: none"> <li>• Board approval of Budget for June 2012</li> </ul>
Bargaining Parameters	June	Debra McFadden	<ul style="list-style-type: none"> <li>• 10 bargaining committees established with SO and trustee liaisons</li> <li>• Prep for bargaining for all 10 employee groups.</li> </ul>
School Build	June	Gerry Cullen	Updates <ul style="list-style-type: none"> <li>• Alton secondary school</li> </ul>
Education Development By-law Review	June	L. Veerman	



# Halton District School Board

---

Report Number: 11171

Date: November 9, 2011

**INCIDENTAL INFORMATION**

TO: The Chair and Members of the  
Halton District School Board

FROM: J. Blackwell, Associate Director  
D. Euale, Director of Education

RE: Operational Plans

---

Background

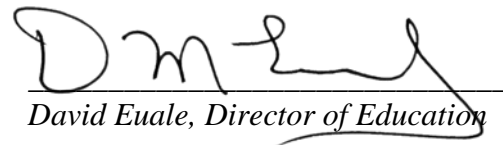
In June 2011, Trustees reviewed the first draft of the Operational Plans for the 2011-12 school year, in connection with budget allocations for these targets and plans.

Following budget approval, the operational plans were fine tuned, in keeping with budget allocations, and prioritized.

The appended plans are presented here for trustees' information.

*Respectfully Submitted,*

  
\_\_\_\_\_  
Jeff Blackwell, Associate Director

  
\_\_\_\_\_  
David Euale, Director of Education



# Halton District School Board

## 2011-2012 OPERATIONAL PLAN

### STUDENTS



### SPECIFIC RESULTS GOAL: LITERACY - NUMERACY

TARGETS	STRATEGIES	RESPONSIBILITY	BUDGET
<p><b>LITERACY</b></p> <p><b>Primary Reading</b></p> <p>74% of all grade 3 students will achieve the provincial standard in reading on the EQAO provincial assessment. (a rise of 3% from the current 71%.)</p> <p><b>Sub-goals:</b></p> <p>41% of all grade 3 students with special needs will achieve the provincial standard in reading on the EQAO provincial assessment. (a rise of 5% from the current 36%).</p> <p>71% of all grade 3 boys will achieve the provincial standard in reading on the EQAO provincial assessment. (a rise of 5% from the current 66%)</p> <p>10% of all grade 3 students working at level 3 will achieve level 4 in reading on the EQAO provincial assessment. (a rise of 2% from the current 8%.)</p>	<p><b>Implement HDSB Expected Practices with a focus on:</b></p> <p>Component #2 Instructional Leadership (Inquiry-based learning &amp; Teaching-Learning Critical Pathway – Learning Cycles)</p> <p>Component #3 – Assessment and Evaluation. (Learning Goals – Success Criteria – Assessment as, for and of learning)</p> <p>Component #4 – Curriculum and Instruction (Differentiation)</p> <p>Component#5 – Student Voice</p> <p>Students are regularly engaged in higher-order thinking skills and the completion of meaningful, respectful open-ended and contextual tasks.</p> <p>Resources for students are relevant, current, accessible and inclusive.</p> <p>HDSB ICT expectations and resources will be integrated into program planning to ensure that a range of technologies supports the needs of all students and their learning. (Assistive technology, E-learning, blended learning, RAZ kids, Lexia Program)</p> <p>Literacy tutoring programs are implemented to target “at risk” students (LAP, OFIP tutoring, Summer tune-up camps)</p> <p>All HDSB schools are part of a professional learning network in literacy</p> <p>School Programs staff are assigned to a specific cluster of schools for support</p> <p>Continued implementation of the HDSB Growing Success policy and procedures and system focus on assessment for, as and of learning.</p>	<p>Associate Director</p> <p>Superintendent: Program (elementary) Superintendent: Program (secondary) Superintendent: Student Services</p> <p>Family of Schools Superintendents</p> <p>System Principals</p> <p>School Programs Department Student Services Department</p> <p>Research Department</p> <p>School Effectiveness Leads Learning Resource Teachers</p> <p>Literacy coaches</p> <p>Student Work Study Teachers</p> <p>ICT key teachers</p> <p>SERTs</p> <p>Student Success Teachers</p> <p>ESL Teachers</p>	<p>School Networks – Literacy - \$276,349.00</p> <p>Schools Helping Schools \$25,000.00</p> <p>OFIP - \$25,000.00</p> <p>SIM funding - \$192,000.00</p> <p>OFIP Tutoring – LAP – Summer tune-up \$100,000.00</p> <p>FI and English Networks - \$25,000.00</p> <p>Student Work Study Teacher Initiative - \$50,000.00</p> <p>School Effectiveness Framework - \$100,000.00</p> <p>Growing Success Student Success funding \$150,000.00</p>

TARGETS	STRATEGIES	RESPONSIBILITY	BUDGET
<p><b>Primary Writing</b> 79% of all grade 3 students will achieve the provincial standard in writing on the EQAO provincial assessment. (a rise of 2% from the current 77%.)</p> <p><b>Sub-goals:</b> 60% of all grade 3 students with special needs will achieve the provincial standard in writing on the EQAO provincial assessment. (a rise of 5% from the current 55%)</p> <p>76% of all Grade 3 boys will achieve the provincial standard in writing on the EQAO provincial assessment. (a rise of 5% from the current 71%.)</p> <p>10% of all Grade 3 students will achieve level 4 in writing on the EQAO provincial assessment. (a rise of 5% from the current 5%.)</p>	<p>All schools complete School Improvement Plans that include a literacy goal and will implement TLCP cycles in literacy based on school and classroom data.</p> <p>All schools complete school self-assessments to monitor and assess their progress towards the achievement of their goals and actions.</p> <p>Continue District Reviews to offer feedback to schools in their goal setting and staff development focus.</p> <p>Ensure accountability through Superintendent monitoring of Board Improvement Plan, School Improvement Plans, School Self-Assessments and District Review.</p> <p>Continue the literacy coaching model in secondary schools.</p> <p>Develop and increase the number of e-learning courses for HDSB students.</p> <p>Provide professional learning for staff on the use of assistive technology to support increased use of technology in all classrooms.</p> <p>Expand the number of schools implementing RAZ Kids home reading program</p> <p>Place coaches, Learning Resource Teachers and ELL teachers in targeted schools to co-plan, co-teach, mentor and coach to meet the needs of students and build teacher capacity.</p>		<p>Growing Success – elementary - \$30,000.00</p> <p>Learning Resource Teachers – GSN \$1.8 million</p> <p>Literacy coaches Secondary Student Success funding \$185,000.00</p> <p>Professional Learning Resources - Literacy Student Success funding \$75,000.00</p>
<p><b>ADDITIONAL TARGETS:</b></p> <p><b>Junior Reading</b> 82% of all grade 6 students will achieve the provincial standard in reading on the EQAO provincial assessment. (a rise of 3% from the current 79%.) 45% of all grade 6 students with special needs who participate will achieve the provincial standard in reading on the EQAO provincial assessment. (a rise of 5% from the current 40%.) 79% of all grade 6 boys will achieve the provincial standard in reading on the EQAO provincial assessment. (a rise of 5% from the current 74%.)</p> <p><b>Junior Writing</b> 79% of all grade 6 students will achieve the provincial standard in writing on the EQAO provincial assessment. (a rise of 2% from the current 77%.)</p> <p><b>Sub-goals:</b> 43% of all grade 6 students with special needs who participate will achieve the provincial standard in writing on the EQAO provincial assessment. (a rise of 5% from the current 38%.) 73% of all grade 6 boys will achieve the provincial standard in writing on the EQAO provincial assessment. (a rise of 5% from the current 68%.)</p> <p><b>OSSLT Goal #1</b> 97% of fully participating, first time eligible grade 10 students enrolled in academic English classes will be successful on the OSSLT provincial assessment. (a rise of 1% from the current 96%.)</p> <p><b>OSSLT Goal #2</b> 64% of fully participating, first time eligible grade 10 students enrolled in applied English classes will be successful on the OSSLT provincial assessment. (a rise of 6% from the current 58%.)</p> <p><b>Sub-goals:</b> 64% of all students in Grade 9 and 10 applied level English, Math and Science courses will earn a ‘G’ or ‘E’ for their Organization /Learning Skills and Work Habits. (a rise of 8% from the current 56%.)</p> <p><b>OSSLT Goal #3</b> Each school offering LDC English courses will submit through their literacy coach to the Associate Director an OSSLT provincial assessment success target for its cohort of students in LDC English.</p>			

TARGETS	STRATEGIES	RESPONSIBILITY	BUDGET
<p><b>NUMERACY</b></p> <p><b>Junior Math</b> 67% of all Gr. 6 students will achieve level 3 or above on the EQAO Junior Mathematics Assessment. (a rise of 3% from the current 64%.)</p> <p>15% of Gr. 6 students will achieve level 4. (a rise of 3% from the current 12%.)</p> <p>95% of Gr. 6 students will achieve level 2 or above. (a rise of 3% from the current 92%.)</p> <p>27% of Gr. 6 students with special needs will achieve level 3 or above. ( a rise of 3% from the current 24%.)</p> <p>71% of participating Gr. 6 students will demonstrate strength in the Mathematics strand of Measurement as measured by the EQAO Junior Profile of Strengths and Areas of Improvement. (a rise of 6% from the current 65%)</p> <p>71% of participating Gr. 6 students will demonstrate strength in the skill of Application as measured by the EQAO Junior Profile of Strengths and Areas of Improvement. ( a rise of 6% from the current 65%.)</p> <p>EQAO Junior Student Questionnaire Results will indicate a rise of 4% in the following items:</p> <ul style="list-style-type: none"> <li>• I like mathematics (from 41% to 45%)</li> <li>• I am good at mathematics (from 55% to 59%)</li> <li>• I am able to answer difficult questions (from 34% to 38%)</li> <li>• I ask for help (from 58% to 62%)</li> <li>• I think about the steps I will use to solve the problem (from 38% to 42%)</li> </ul>	<p><b>Implement HDSB Expected Practices with a focus on:</b></p> <p>Component #2 Instructional Leadership (Inquiry-based learning &amp; Teaching-Learning Critical Pathway – Learning Cyles)</p> <p>Component #3 – Assessment and Evaluation. (Learning Goals – Success Criteria – Assessment as, for and of learning)</p> <p>Component #4 – Curriculum and Instruction (Differentiation)</p> <p>Implement the mathematics learning block - teaching through the mathematics processes using the three-part design (Before, During, After; MATCH template – minds on, action, timing, consolidate, homework)</p> <p>Supports for mathematics thinking and representation are available as thinking tools (eg calculators, manipulatives, internet, computer software, data sources, newspaper, textbooks, picture books)</p> <p>Build leadership capacity through the administrator network in Mathematics.</p> <p>Build teacher capacity in Mathematics instruction through Inquiry projects, lesson study and mathematical processes, CILM, Numeracy team inquiries, SIP Numeracy actions, and SIM Networks.</p> <p>Continue LD Teacher Network and Prime math training</p> <p>Students are regularly engaged in higher-order thinking skills and the completion of meaningful, respectful open-ended and contextual tasks</p> <p>Implement math coaching at the Grade 7 and 8 level</p> <p>Resources for students are relevant, current, accessible and inclusive. A range of technologies (e.g., assistive technology to support the needs of all students and their learning.)</p> <p>Offer Staff Development in the use of core resources: Math Makes Sense, HDSB ICT expectations, Edu-Gains, Gap closing strategies.</p> <p>Increase the number of students accessing On-line Math Homework Help.</p> <p>SERT and Self-Contained Class Networking sessions</p>	<p>Associate Director Superintendent: Program (elementary) Superintendent Program: (secondary) Superintendent of Student Services Family of Schools Superintendents System Principals School Programs Department Student Services Department Research Department School Effectiveness Leads Student Work Study Teachers ICT key teachers SERTs Student Success Teachers Math coaches</p>	<p>Early Years Collaborative Inquiry - \$20,000.00</p> <p>Schools in the Middle - \$192,000.00</p> <p>Collaborative Inquiry for Learning Mathematics - \$86,000.00</p> <p>Numeracy 4+ - \$25,000.00</p> <p>School Networking - \$276,000.00</p> <p>Grade 7 &amp; 8 Math Coaches \$160,000.00</p> <p>Secondary Math Coaches \$126,000.00</p> <p>Professional Learning Resources - Numeracy Student Success funding \$93,000.00</p>

**ADDITIONAL TARGETS:**

**Secondary Math**

**Gr. 9 Applied**

56% of all Gr. 9 Applied students will achieve level 3 or above on the EQAO Grade 9 Applied Mathematics Assessment. (a rise of 3% from the current 53%.)

90% of Gr. 9 Applied students will achieve level 2 or above. (a rise of 3% from the current 87%.)

52% of Gr. 9 Applied students with special needs will achieve level 3 or above. (a rise of 3% from the current 49%)

EQAO Grade 9 Applied Student Questionnaire Results will indicate a rise of 4% in the following items:

- I like mathematics (from 32% to 36%)
- I am good at mathematics (from 39% to 43%)
- The mathematics I learn now is useful for everyday life (from 40% to 44%)

**Grade 9 Locally Developed Math Course**

80% of students enrolled in Grade 9 Locally Developed Mathematics Course will earn a credit as reflected in their final mark. (a rise of 2% from the current 78%.)

**Grade 9 to 11 Math Courses**

98% of grade 9 students taking math courses will pass. (a rise of 3% from the current 95%.)

92% of grade 10 students taking math courses will pass. (a rise of 3% from the current 89%.)

96% of grade 11 students taking math courses will pass. (a rise of 3% from the current 93%).



# Halton District School Board

## 2011-12 OPERATIONAL PLAN

### STUDENTS



**SPECIFIC RESULTS GOAL:**      STUDENT SUCCESS

TARGETS	STRATEGIES	RESPONSIBILITY	BUDGET
<p>79% of grade 10 students will have accumulated 16 credits by the end of grade 10. (a rise of 1.8% from the current 77.2 %.)</p> <p>70% of secondary students will indicate that they value school outcomes as measured by the TTFM survey. (a rise of 2% from the current 68 %.)</p> <p>All secondary students will obtain a score of 6/10 on the Tell Them From Me survey measure of Relevance. The current score is 5.7/10.)</p> <p>76.5 % of all students from grade 1 through 12 will achieve good or excellent on the Self- Regulation achievement on the Final Report card. (a rise of 1.9% from 74.6%)</p>	<p><b>Implement HDSB Expected Practices with a focus on:</b></p> <p>Component #2 Instructional Leadership (Inquiry-based I&amp; Teaching-Learning Critical Pathway – Learning Cycles)</p> <p>Component #3 – Assessment &amp; Evaluation. (Learning Goals, Success Criteria, Assessment as, for &amp;of learning)</p> <p>Component #4 – Curriculum and Instruction (Differentiation)</p> <p>Component#5 – Student Voice</p> <p>IEP Implementation and Training</p> <p>Continue credit-bearing Transition Classes at Robert Bateman and EC Drury</p> <p>Ensure all Grade 7-12 student success teachers and guidance teachers are aware of specialty/sector pathways programs for 2011-12 and inform students of these new courses.</p> <p>Implement contextualized learning activities in primary, junior and intermediate divisions to increase awareness of and promote Pathways opportunities</p> <p>Write and pilot a new Special Education “SHSM ” program for students not on Ontario Curriculum</p> <p>Ensure all Grade 7-9 students complete their Pathway planner and have access to myblueprint.ca., Pathway Planners, School to Career website</p> <p>Communicate the community hours expectation to all Grade 8 students and track student accumulation of community hours through conferences with Student Success / Guidance teachers.</p> <p>Continue the implementation of the Ministry and HDSB Re-engagement Strategy</p> <p>Implement SAL programs (Supervised Alternate Learning)</p> <p>Ensure secondary schools use data from Credit Accumulation, Pass Rates, Learning Skill achievement, TTFM and other related data to identify a pathways focus for their school improvement plan.</p> <p>Continued staff development on the implementation of the HDSB Growing Success policy and procedure as well as assessment for, as and of learning.</p> <p>Increase the number of students involved in VEX , FIRST Robotics, Skills Olympics</p> <ul style="list-style-type: none"> <li>• Elementary Contextual Learning Activities Projects (Grades 1,3,5,7, 8)</li> <li>• Literacy Lead Collaborative Inquiry (LLCI)</li> <li>• Expansion of Specialist High Skills Major programs</li> <li>• Pathways Conference</li> <li>• Contextual Learning Activity Writing teams – Secondary</li> <li>• Student Success Teacher/Team Network</li> <li>• School College Work Initiative – Dual Credit Programs</li> <li>• Robotics – VEX and FIRST Robotics</li> <li>• Skills Olympics</li> <li>• Special Education Pathways Program in Life Skills</li> </ul> <p>Design a survey for HDSB post-secondary students to track their post-secondary pathways</p> <p>Implementation of Carolina Curriculum and AFAC for students currently in self-contained classes requiring alternative curriculum</p>	<p>Associate Director</p> <p>Superintendent: Program (elementary)</p> <p>Superintendent: Program (secondary)</p> <p>Superintendent of Student Services</p> <p>Family of Schools Superintendents</p> <p>School Programs Dept.</p> <p>Student Services Dept.</p> <p>Research Dept.</p> <p>Student Success Teachers</p> <p>Student Success Teams</p> <p>Re-engagement Counsellors</p>	<p>SHSM \$578,000.00</p> <p>SHSM \$180,900.00</p> <p>Transition Program Staff Development \$40,000.00</p> <p>Contextualized Learning writing teams - \$25,000.00</p> <p>Student Success teams Staff Development \$35,000</p> <p>Student Tracking and Monitoring - \$40,000</p> <p>Co-op – Guidance support - \$40,000.–</p> <p>Re-engagement Counsellors: \$75,000.00 Student Success budget)</p> <p>New curriculum implementation and differentiated instruction - \$24,000</p> <p>School Effectiveness Framework implementation (Expected Practices, SIP, SSA, District Review) \$50,000.00</p> <p>Growing Success \$150,000.00</p> <p>TTFM Survey \$47,000.00</p> <p>Literacy Coaches – \$185,000.00</p> <p>Professional Resources – Literacy - \$75,000</p>



<p>All students will obtain a score of 8.6/10 on the Tell Them From Me survey measure of feeling safe at school. The current score is 8.2/10</p> <p>All students will obtain a score of 4.0/10 on the Tell Them From Me survey measure of having someone at school that consistently provides encouragement and can be turned to for advice. The current score is 2.5/10.</p> <p>The percentage of students experiencing bullying in the month prior to participating in the TTFM survey will fall by 3% from 18% to 15%.</p>	<ol style="list-style-type: none"> <li>5. Ongoing school support developing inclusive strategies and addressing equity in education</li> <li>6. Support issues of student marginalization through school GSA clubs, Spectrum Team, Circle of Friends, Student Clubs, etc</li> <li>7. Continue implementation of Ministry First Nations, Métis and Inuit Policy Framework, including the implementation of the First Nations, Métis, Inuit Voluntary Confidential, Self-Identification Policy and offering Native Studies courses in high schools.</li> <li>8. Support for implementing newcomer JK/SK students and Gr8-9 Transition programs.</li> <li>9. Continuation of the Youth Settlement Worker Program with the Halton Multicultural Council in all schools. New this year will be permanent worker time in high needs schools with itinerant workers in selected schools.</li> <li>10. Student Voice Initiative e.g. Student Equity Summit, Student Voice Conference, etc.</li> <li>11. Bullying prevention and intervention supports for newcomers, special needs and LGBTQ students.</li> <li>12. Support continued self-identification policy and Native Studies courses.</li> <li>13. Implementation of HDSB ESL/ ELD Steering Advisory Committee recommendations and ELL Secondary Delivery model (ELL Ministry Policy Framework implementation).</li> <li>14. Equity Team-collaborate with Student Services to promote equity work for marginalized students in the areas of mental health and students with complex needs with a focus on equity strategies for all.</li> <li>15. Equity Team and Student Services shared in-service to support staff regarding the 7 equity lenses in practice</li> <li>16. Collaboration with Safe Schools Team and SSATs re bullying prevention/ intervention work with a focus on supporting newcomer students and other vulnerable students</li> <li>17. Collaboration with Student Services to implement the ELL/SPED protocol in pilot schools to address the needs of ELLs who may have special education needs</li> <li>18. Ministry ELL/Spec. Ed project for ELLs who may have special education needs using Growing Success to change classroom instructional practice by utilizing purposeful classroom instruction based on student profile as a learner.</li> </ol> <p><b><u>Special Education:</u></b> System focus on the reduction of reportable aggressive incidents as follows:</p> <ol style="list-style-type: none"> <li>1. Implementation of Safety Plans, Behaviour Plans.</li> <li>2. UMAB training implemented for all staff working with potentially aggressive students.</li> <li>3. ABA Facilitator support</li> <li>4. Strategies to improve student behaviour.</li> <li>5. Multi-Disciplinary Team created to support students with complex needs.</li> <li>6. Collaborative Problem Solving promoted as an effective strategy.</li> <li>7. Managing Aggressive Behaviour of Students with Special Needs Admin Procedure.</li> </ol> <p>Provide supports for students experiencing mental health concerns as follows:</p> <ol style="list-style-type: none"> <li>1. Student Support Leadership Initiative.</li> <li>2. Development of a Mental Health Strategy.</li> <li>3. Development of a Mental Health Support Team.</li> <li>4. Behaviour Resource Programs and PROPS.</li> </ol>	<p>Superintendent of Education -Student Services (David Boag)</p> <p>System Principal - Student Services (Sue Roszel)</p>	<p>Instructional Program Leader ELL Secondary \$116,332</p> <p>\$60,000 (UMAB training)</p>
---	---	---	---



# Halton District School Board

## 2010-11 OPERATIONAL PLAN

### STAFF



#### SPECIFIC RESULTS GOAL: LEADERSHIP AND STAFF DEVELOPMENT

TARGETS	STRATEGIES	RESPONSIBILITY	BUDGET
Principals, Vice Principals and corporate managers will improve communication skills with parents, community, students/staff.	Train 35 principals, 25 vice principals and 17 managers in <i>Crucial Conversations</i> (A Ministry Core Capacity – Courageous Conversations)	Superintendent Team	\$20,000
Principals will increase their leadership skills as identified in <i>The Ontario Leadership Framework &amp; The 5 Core Capacities</i>	Offer Leadership Programs as per Leadership Booklet	Principal of Leadership & Staff Development, Superintendent	\$ 98,519
Manage, monitor and improve the Quality and Impact of Staff Development	<p>Continue to use tools and capacity to ensure alignment with HDSB Expectations and Guiding Principles for Staff Development (Needs Assessment Tools, Planning Tools)</p> <p>Common assessment tool aligned with Guskey and Guiding Principles used to monitor impact of staff learning and to gather system wide data</p> <p>Leadership and staff learning events scheduled and coordinated centrally through use of the system calendar and TIPS and communicated/advertised in a coordinated way on my HDSB</p> <p>Materials from all learning sessions will be archived and organized for easy access through Staff Learning and Leadership space on my HDSB</p>	<p>System Principal Leadership and Staff Development and Department and Employee Group Representatives on the Staff Development Steering Committee</p> <p>System Principal Staff Development with support from Research</p> <p>System Principals</p> <p>Corporate Superintendents and Principal of Leadership and Staff Development</p>	

<b>TARGETS</b>	<b>STRATEGIES</b>	<b>RESPONSIBILITY</b>	<b>BUDGET</b>
<p>100% of TPAs for new and experienced teachers will be completed and tracked using mVal software</p>	<p>Superintendents will be trained on the use of mVal software to review and approve TPAs</p> <p>Ongoing training and support sessions for new and experienced school administrators on the use of mVal and on best practice for TPAs</p> <p>Develop training plans for writing the improvement and enrichment plans to accompany “unsatisfactory” and development needed TPA summative reports and deliver training to principals and vice principals using mVal</p>	<p>Superintendent (Technology) and Principal Leadership and Staff Development</p> <p>Superintendent and Principal Leadership and Staff Development</p>	<p>\$23,000 Ministry Project</p>
<p>100% of beginning teachers (1<sup>st</sup>, 2<sup>nd</sup> year and LTO) will be effectively supported in the NTIP program</p> <p>100% of new teachers will be given the opportunity to observe an experienced teacher</p>	<p>All first year teachers will participate in learning community sessions and job embedded applications - facilitated by teams of administrators, program coordinators, and teacher leaders</p> <p>All first year teachers will be matched with a trained mentor - training and support sessions will be provided for mentors</p> <p>Release time for mentoring and observation will be provided and tracked using reflection forms</p> <p>Administrators will be trained on all aspects of NTIP</p> <p>NTIP Manual provided for all new teachers, mentors, administrators</p> <p>NTIP page on myHDSB for all beginning teachers, mentors, and administrators</p> <p>Selected workshops and observation opportunities for second year teachers</p> <p>Opportunity for 2<sup>nd</sup> year teacher to apply through admin for extended funding to support growth</p>	<p>Principal of Leadership &amp; Staff Development</p>	<p>\$575,195</p> <p>Ministry New Teacher Induction Program Dollars</p>

TARGETS	STRATEGIES	RESPONSIBILITY	BUDGET
<p>100% of school administrator teams will monitor how their leadership actions impact teacher practice and student achievement / engagement goals in SIP</p>	<p><i>Building Leadership and Learning Capacity (BLLC) Part 6 and 7</i> connects School Improvement Planning with increased understanding of links between student engagement and achievement in literacy and numeracy by using increased technology strategies in the classroom and across the school.  Offer OPC “Leading and Learning in the 21<sup>st</sup> Century”  Administrators new to the role will do self-Assessment using the Leadership Maps</p>	<p>Superintendent and Principal of Leadership and Staff Development.</p>	<p>\$80,831.00  (Ministry funding)</p>
<p>Increase the % of successful internal applicants to the Principal and Vice Principal roles – Target:  50% Elementary VP  50% Elementary Principal  50% Secondary VP  50% Secondary Principal</p> <p>Attract quality external applicants to Halton administration</p>	<p>Continue to offer leadership programs for teachers, e.g., <i>TAPIN</i>  Expand opportunities for participants to job shadow</p> <p>Expand the opportunities for teacher leaders to participate in system level leadership opportunities  Provide interview preparation workshops for all potential candidates  Continue the revision of the Promotion and Feedback Process</p>	<p>Superintendent &amp; Principal of Leadership &amp; Staff Development</p> <p>Superintendent &amp; Principal of Leadership &amp; Staff Development.  Team of experienced VPs</p> <p>Superintendent</p>	
<p>100% of new administrators will be supported through induction workshops and mentoring in their first two years in the principal/vice principal role</p>	<p>Administrators assigned a mentor when appointed to role  Mentor training / support sessions for admin mentors  Mentor Learning Plan and self assessment tools based on 5 Core Capacities and Leadership Framework used to set goals and strategies for growth  Group mentoring / coaching sessions for all new administrators (timely topics)  Induction workshops focused on operational / legal issues provided by various departments, system principals, etc. – online modules to be developed  Entry workshops &amp; facilitated entry conversations offered to new and transferred administrators  Facilitation of Group School Observation Walkthroughs</p>	<p>Superintendents and System Principal Leadership and Staff Development  System Principal Leadership and Staff Development</p>	



# Halton District School Board

## 2011-12 OPERATIONAL PLAN

### STAFF



#### SPECIFIC RESULTS GOAL: WELLNESS

TARGETS	STRATEGIES	TIME	RESPONSIBILITY	BUDGET
Continue to promote wellness within the organization	Employee Assistance Provider (EAP) moving to Shepell-fgi as part of expansion of service, anticipating higher usage of services	September 2011	Executive Officer of Human Resources & HR Staff with the assistance of Wellness Committee	\$307,340
	<ul style="list-style-type: none"> <li>Promote and Celebrate Healthy Workplace Month in all HDSB schools and sites. Delivery of apples to all schools</li> </ul>	Fall 2011		\$1,600
	<ul style="list-style-type: none"> <li>Celebrate 3<sup>rd</sup> annual Board Wide Employee Appreciation Day</li> </ul>	February 2012		
	<ul style="list-style-type: none"> <li>Maintain Staff Wellness Information Kiosks located at JWS, NSEC and EC Drury H.S</li> </ul>	Ongoing		\$2,000
	<ul style="list-style-type: none"> <li>Continue to build upon working partnerships with community partners i.e. Active Halton, Municipalities, Halton Regional Health Department</li> </ul>	Ongoing		
	<ul style="list-style-type: none"> <li>“Team HDSB” will be participating in the weekend to End Women’s Cancers in September 2011</li> </ul>	September 2011		
	<ul style="list-style-type: none"> <li>“Movember” events will be promoted to raise funds and awareness for men’s health, specifically prostate cancers</li> </ul>	November 2011		
	<ul style="list-style-type: none"> <li>Body Bulletin (Health and Wellness newsletter) sent to system in print and electronic format</li> </ul>	Ongoing - Monthly		\$8,000
	<ul style="list-style-type: none"> <li>Health and Wellness e-bulletin sent to system on a monthly basis</li> </ul>	Ongoing - Monthly		

<b>TARGETS</b>	<b>STRATEGIES</b>	<b>TIME</b>	<b>RESPONSIBILITY</b>	<b>BUDGET</b>
Increase participation in wellness programs by 20%	Provide funding to worksites to allow for school-based wellness activities	Ongoing	Executive Officer of Human Resources & HR Staff with the assistance of Wellness Committee	\$45,000
	Investigate feasibility of continuing with Staff Wellness Survey	Winter 2012		
	Produce Staff Wellness Calendar for 2012/2013	Summer 2012		\$5,000
	Release time for Wellness Champions	2011-2012 school year		\$5,000
	Release time for Wellness Committee Members	2011-2012 school year		\$2,000
	Investigate best practices in regards to Employee Recognition Programs	ongoing		
	Encourage staff to take advantage of corporate discounts currently offered to HDSB staff	ongoing		
	System wide events/ workshops to be offered after-school (i.e.: work-life balance, stress, physical activity and healthy living)	ongoing		
	Living It Everyday! Event for staff and families of HDSB (healthy eating, physical activity and work-life balance)	2012		\$4,000
	Additional Resources to Media/Libraries for staff usage (i.e.: pedometers, self learning) to support encourage health active living	2011-2012 school year		\$400
Review best practices for Employee Health Programs	2011-2012 school year			

TARGETS	STRATEGIES	TIME	RESPONSIBILITY	BUDGET
<p>Reduce Sick Leave Usage</p>	<p>The Attendance Support Development Team continues to meet and consult with School Board’s Cooperative Inc., to enlist their expertise on Attendance Support (disability management, attendance management, and wellness). An Attendance Support Officer has been hired for staff support and case management.</p> <p>The Disability Management Program has been formalized and best practices have been implemented. The Wellness program continues to address individual lifestyle practices and seeks to increase personal and organizational health. The Attendance Management Program has been developed and is set for a January 2012 implementation. Six training sessions have been scheduled at the end of November/beginning of December 2011 for all Principals, Managers, and Supervisors. Materials and resources have been created to support staff.</p> <p>Attendance Support communication began October 2011. Communication materials have been developed and include PowerPoint presentations, brochures, flyers, electronic emails and verbal messages. Six administrative procedures have been developed and approved. A Standard Medical Certificate has been developed and a process for the flow of confidential employee medical documentation has been implemented. The Parklane Attendance Module has been purchased and the appropriate data has been imported for proper use and data collection. The Attendance Support Program – Advisory Committee and the Development Team will continue to meet throughout the 2011/12 school year.</p>	<p>2011-2012 school year</p>	<p>Executive Officer of Human Resources &amp; HR Staff with the assistance of School Boards Cooperative (SBCI)</p>	<p>Total \$90,500</p> <p>Committee release time: \$2,000</p> <p>Materials and training: \$4,500</p> <p>Implementation-consulting: \$84,000</p>



# Halton District School Board

## 2011-12 OPERATIONAL PLAN

### SYSTEM



#### SPECIFIC RESULTS GOAL: PROGRAM AND ACCOMMODATION

TARGETS	STRATEGIES	RESPONSIBILITY	BUDGET																												
New School Construction	<ul style="list-style-type: none"> <li>• Milton # 1 HS</li> <li>• SRA 103 HS</li> <li>• SRA101(Burlington HS) (Ministry approval pending)</li> <li>• ERA109 (Burlington PS) (Ministry approval pending)</li> <li>• ERA120 (Milton7 PS) Elementary (Ministry approval pending)</li> <li>• John W. Boich PS</li> </ul>	<p>Superintendent of Facility Services: capital projects and management of workload</p> <p>Superintendent of Business: funding and tendering of projects</p>	Approx. \$120 million																												
Portable Placement	<ul style="list-style-type: none"> <li>• Moved 52 portables in and out of school sites</li> </ul>	<p>Superintendent of Facility Services: placement and relocation of portables</p> <p>Superintendent of Business: identify need and undertake RFP for moves</p>	Approx. \$2.4 million																												
FDK Projects	<p>Renovations and additions for Year 3 projects (19 sites)</p> <table border="1"> <thead> <tr> <th>Additions</th> <th>Renovations</th> </tr> </thead> <tbody> <tr><td>Silver Creek PS</td><td>Harrison PS</td></tr> <tr><td>Cpt. Wilson PS</td><td>J. Gibbons PS</td></tr> <tr><td>Post's Crs. PS</td><td>Park PS</td></tr> <tr><td>River Oaks PS</td><td>C. Hadfield PS</td></tr> <tr><td>B.T. Lindley PS</td><td>Martin Str. PS</td></tr> <tr><td>Flo. Meares PS</td><td>R. Baldwin PS</td></tr> <tr><td></td><td>Eastview PS</td></tr> <tr><td></td><td>G. Speers PS</td></tr> <tr><td></td><td>Glenview PS</td></tr> <tr><td></td><td>J.T. Tuck PS</td></tr> <tr><td></td><td>Maplehurst PS</td></tr> <tr><td></td><td>P.A. Fisher PS</td></tr> <tr><td></td><td>Ryerson PS</td></tr> </tbody> </table>	Additions	Renovations	Silver Creek PS	Harrison PS	Cpt. Wilson PS	J. Gibbons PS	Post's Crs. PS	Park PS	River Oaks PS	C. Hadfield PS	B.T. Lindley PS	Martin Str. PS	Flo. Meares PS	R. Baldwin PS		Eastview PS		G. Speers PS		Glenview PS		J.T. Tuck PS		Maplehurst PS		P.A. Fisher PS		Ryerson PS	<p>Superintendent of Facility Services, Superintendent of Business, Superintendent of Education (FDK)</p>	Approx. \$ 14 million
Additions	Renovations																														
Silver Creek PS	Harrison PS																														
Cpt. Wilson PS	J. Gibbons PS																														
Post's Crs. PS	Park PS																														
River Oaks PS	C. Hadfield PS																														
B.T. Lindley PS	Martin Str. PS																														
Flo. Meares PS	R. Baldwin PS																														
	Eastview PS																														
	G. Speers PS																														
	Glenview PS																														
	J.T. Tuck PS																														
	Maplehurst PS																														
	P.A. Fisher PS																														
	Ryerson PS																														

TARGETS	STRATEGIES	RESPONSIBILITY	BUDGET
Partnerships	Alton HS – agreement with the City of Burlington and Burlington Library Nelson Stadium Turf – agreement with the City of Burlington		
Process and Policy	Rental Software – Implementation and potential integration with Halton Catholic District School Board Reciprocal agreement process integration to Worktech (Facilities) into BAS 2000 Update existing PARC policies	Superintendent of Business, Superintendent of Facility Services  Program and Accommodation Committee	Secondment of staff: \$50,000  Secondment of staff \$20,000
Renewal	Increase available dollars for school renewal project. To include H. Wiggleswoth site.  \$2,352,198 in unspent renewal funding has been rolled forward to 11/12 (pending trustee approval)  Out of this, we have identified \$1,467,662 that is required to complete prior year approved projects.	Superintendent of Business, Superintendent of Facility Services	



# Halton District School Board

## 2011-12 OPERATIONAL PLAN

### SYSTEM



#### SPECIFIC RESULTS GOAL: COMMUNICATIONS

TARGETS	STRATEGIES	RESPONSIBILITY	BUDGET
100% of staff will effectively use email, conferencing and calendaring by 2010	<ul style="list-style-type: none"><li>Continued improvements to CHATT</li></ul>	Chief Information Officer Manager, Director's Office	
Increase effective web usage for stakeholders of the Halton District School Board	<ul style="list-style-type: none"><li>Selection of a parent/parent web portal solution</li><li>Continue expansion of the myHDSB staff web portal</li><li>Pilot and release of School Website Administrative Procedure</li></ul>	Chief Information Officer	



# Halton District School Board

## 2011-12 OPERATIONAL PLAN

### SYSTEM



**SPECIFIC RESULTS GOAL: COMMUNICATIONS: Parent/Community Engagement**

TARGETS	STRATEGIES	RESPONSIBILITY	BUDGET
<p><b>Increase parent/community participation and enhance engagement in the following areas:</b></p> <p>100% of schools will have a parent Involvement Committee representative (63 Schools –2010/11)</p> <p>15% increase in the number of parents attending the Fall PIC conference (319 participants – 2010/11)</p> <p>School Improvement Plans – community engagement strand: 100% of SIP will have at least 4 of Epstein’s 6 Keys/types in each pillar (2 Keys 100% -- 2010/11)</p> <p>15% increase in students participating in the Student Voice project, Student Equity Summit, Halton Inside Out and Making the Change conferences – data response informs the BIP (414 student responses -- 2010-11)</p> <p>10% increase in Community &amp; Business partnerships (41 system partnerships: 2010/11)</p> <p>100% compliance with the required Integrated Accessibility Standards Regulation timelines as outlined in the Annual Accessibility Plan (60% schools compliant – 2010/11)</p> <p>10% increase in school use of language line and interpretation services to support parents whose first language is not English or French (494 individual users 2010/11)</p> <p>100% of schools are fully compliant with PPM 150, Nutrition Standards by Sept. 1. 2011 (56% schools compliant – 2010/11)</p> <p>RBA (Results Based Accountability) model used to evaluate progress of community engagement strategies</p> <p>Ministry of Education Equity Strategy Checklist Year 2</p>	<ul style="list-style-type: none"> <li>▪ <b>Review implementation of Community Engagement Plan:</b> (High yield action plans, web tools, student engagement, parent/school council outreach, program messaging, community business partnerships, consultation process, equity &amp; inclusive education)             <ul style="list-style-type: none"> <li>▪ Implementation of Ministry Parent Engagement Policy</li> <li>▪ Parent Involvement Committee (meetings, workshops, presentations, PIC Conference)</li> <li>▪ Distribution of Ministry Funds to School Councils</li> <li>▪ Implementation Communication Plan First Nations, Metis, Inuit Voluntary Confidential Self Identification policy</li> <li>▪ School Council and Parent Groups supports</li> <li>▪ Ministry Projects and Directives</li> <li>▪ Provincial and Regional Partnership Projects</li> <li>▪ School Community Initiatives</li> <li>▪ Addressing Socio-economic and Student Fees Projects</li> <li>▪ Implementation of PPM 150- Nutrition Standards</li> <li>▪ Student Voice conference, Student Equity Summit</li> <li>▪ Making the change and Halton Inside Out student conferences</li> <li>▪ Annual Accessibility Plan, 2001-2012</li> <li>▪ Language Line, interpretation and translation services</li> </ul> </li> </ul>	<p>Superintendent of Education – Community Engagement</p> <p>System Principal – Community Engagement</p>	<p><b>\$33,984</b> (included in Budget)</p> <p><b>\$61,613 MOE</b></p> <p><b>\$30,000 EPO</b></p>



# Halton District School Board

## 2011-12 OPERATIONAL PLAN

### SYSTEM



**SPECIFIC RESULTS GOAL:**

**INFORMATION TECHNOLOGY & PROJECT UPDATE**

TARGETS	STRATEGIES	TIME	RESPONSIBILITY	BUDGET
<b>INFORMATION TECHNOLOGY</b> <i>Computer infusion:</i> Continue to maintain computer ratios of: 1:3 FTE teachers 1:5 secondary students 1:7 elementary students	<ul style="list-style-type: none"> <li>Develop a new plan for the delayed computer infusion. This plan will focus on necessary conditions to effectively leverage technology for learning which are Shared Vision , Empowered Leaders, Implementation Planning , Consistent and Adequate Funding , Equitable Access , Skilled Personnel, Ongoing Professional Learning, Technical Support, Curriculum Framework , Student-Centered Learning, Assessment and Evaluation, Engaged Communities, Support Policies, Supportive External Context (policies and initiatives) .</li> <li>Pilot computer infusion at 5 schools</li> <li>Provide interim assistance to growth schools and schools which have broken equipment.</li> </ul>	Start November 30, 2011	Chief Information Officer	\$320,000
Improved administrative efficiency	<ul style="list-style-type: none"> <li>Elementary Student Attendance System – automation of elementary student attendance process at 51 schools</li> <li>Ongoing training of Clerical staff – new to the role</li> </ul>	Complete rollout April 2012  Starting January 2012	Chief Information Officer	\$24,800 (one time) plus \$38,000 (ongoing)  \$25,000 (ongoing)
<b>PROJECT UPDATE</b> Maintenance and support for operational needs of system	<ul style="list-style-type: none"> <li>Cashless Schools – continuation of Cashless school pilots for review during 2011-12.</li> </ul>		Superintendent of Business	\$206,175
	<ul style="list-style-type: none"> <li>Automated Elementary Attendance System</li> <li>Development and pilot of Secondary School software that assists with the “On-Call” and “Supervision” process.</li> </ul>	September 2011  February 2012	Chief Information Officer	\$62,800



# Halton District School Board

---

Report Number: 11163

Date: November 1, 2011

**INCIDENTAL INFORMATION**

TO: The Chair and Members of the  
Halton District School Board

FROM: Gerry Cullen, Superintendent of Facility Services

RE: ERA120 (Milton 7) Design Plans

---

**Background:**


As part of the new pupil places identified in the Long Term Accommodation Plan a new school is planned for the Town of Milton. This school is ERA120 or known as Milton 7. The school is a repeat design of Palermo PS. Of note the original design is a 704 pupil places, however the Ministry has revised the room loading on the Facility Space Template for kindergarten rooms from 20 to 26. While the square footage of the building has not increased the revision in room loadings has resulted in the new school having an OTG of 741 pupil places. Attached is the room detail for the new school in Appendix 1.

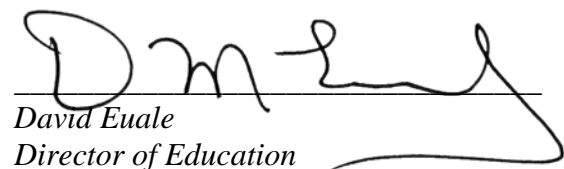
The school site is located south of Derry Road between Thompson Road and Fourth Line (a location map is attached in Appendix 3). The site is currently in a draft plan and is expected to be purchased in the new year. The Ministry has already confirmed funded this project. The current schedule is to open this school in September 2013.

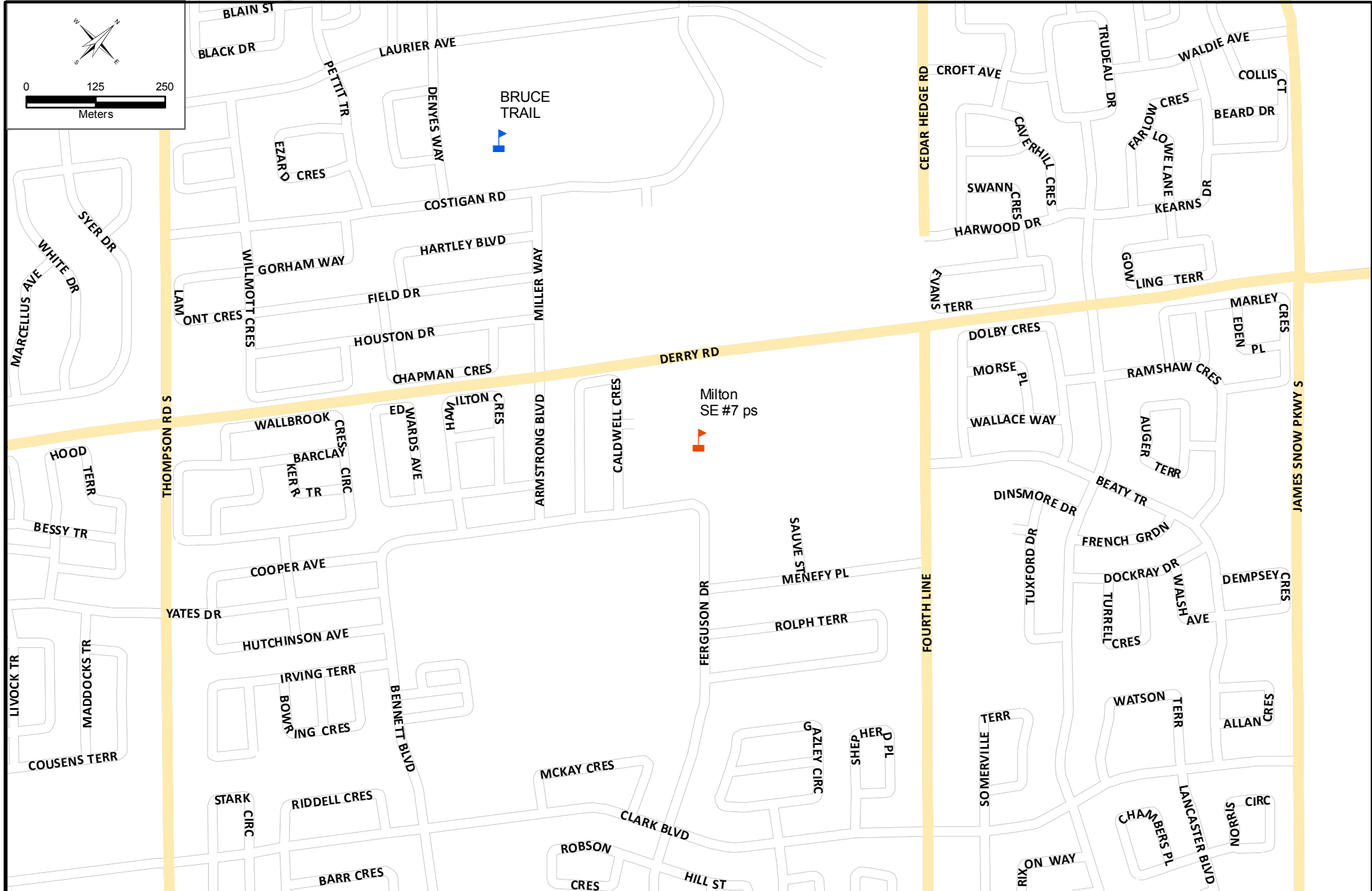
The Board appointed the architectural firm of Allen & Sherriff Arch., to generate the design details needed for the project. Attached are the sketch plan drawings of the school as shown in Appendix 2.

At this stage site plan or building permits have not been approved or issued therefore modifications may be required to the site and design through the approval process.

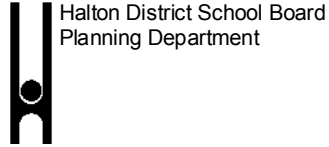
*Respectfully submitted,*

  
Gerry Cullen  
Superintendent of Facility Services

  
David Euale  
Director of Education



Milton  
SE #7 ps



# Location of Milton SE #7 ps

The current street network was provided by the Regional Municipality of Halton and the Region assumes no responsibility or liability for its use or accuracy.

Proposed roads are subject to change.

It is the intention of the HDSB to provide up-to-date and accurate information, and reasonable efforts have been made by the HDSB to verify the information, however a degree of error or change is inherent. This information is distributed "as is" without warranty. HDSB assume no legal liability or responsibility for the accuracy, completeness, or usefulness of any information. If you require additional information please contact the Planning Department at 905-335-3663.

**ELEMENTARY SCHOOL SPACE TEMPLATE**  
Sample School

**ELEMENTARY SCHOOL SPACE TEMPLATE**  
Milton #7

**ELEMENTARY SCHOOL SPACE TEMPLATE**  
School 2

**ELEMENTARY SCHOOL SPACE TEMPLATE**  
School 3

<b>School Board:</b>	Sample District School Board
<b>Grade Range:</b>	JK to 8
<b>Program:</b>	JK to 8
<b>School Name:</b>	Sample School
<b>Proposed OTG Capacity:</b>	553
<b>Elementary Space Benchmark:</b>	104.40 Square Feet per students
<b>Maximum GFA (Ft<sup>2</sup>):</b>	57,733 Square Feet per students X OTG

<b>School Board:</b>	Halton District School Board
<b>Grade Range:</b>	JK to 8
<b>Program:</b>	JK to 8
<b>School Name:</b>	Milton #7
<b>Proposed OTG Capacity:</b>	741
<b>Elementary Space Benchmark:</b>	104.40 Square Feet per students
<b>Maximum GFA (Ft<sup>2</sup>):</b>	77,360 Square Feet per students X OTG

<b>School Board:</b>	JK to 8
<b>Grade Range:</b>	JK to 8
<b>Program:</b>	School 2
<b>School Name:</b>	School 2
<b>Proposed OTG Capacity:</b>	0
<b>Elementary Space Benchmark:</b>	104.40 Square Feet per students
<b>Maximum GFA (Ft<sup>2</sup>):</b>	0 Square Feet per students X OTG

<b>School Board:</b>	XYZ District School Board
<b>Grade Range:</b>	JK to 8
<b>Program:</b>	JK to 8
<b>School Name:</b>	School 3
<b>Proposed OTG Capacity:</b>	0
<b>Elementary Space Benchmark:</b>	104.40 Square Feet per students
<b>Maximum GFA (Ft<sup>2</sup>):</b>	0 Square Feet per students X OTG

Room / Comments	Size (ft <sup>2</sup> )	Size (m <sup>2</sup> )	Number	Load	Capacity	Floor Area (ft <sup>2</sup> )	Ratio
<b>Regular classrooms</b>							
Kindergarten (Avg Size)	1,200	111	5	26	130	6,000	
Classroom (Avg Size)	750	70	16	23	368	12,000	
<b>Subtotal</b>			<b>498</b>			<b>18,000</b>	
<b>Other Classrooms &amp; Rooms</b>							
Art	1,050	98	1	23	23	1,050	
Science	1,050	98	1	23	23	1,050	
Music (Vocal)	0	0	1	23	23	0	
Music (Instrumental)	1,040	97	1			1,040	
Computer Laboratory	0	0	0	23	0	0	
Technical / Vocational	0	0	0	23	0	0	
Special Education	1,000	93	1	9	9	1,000	
Resources Room (Loaded)	600	56	2	12	24	1,200	
Resources Room (Unloaded)	250	23	2			500	
<b>Subtotal</b>			<b>102</b>			<b>5,840</b>	
<b>Other</b>							
Stage	800	74	1			800	
Library / Library Resource Centre	2,600	242	1			2,600	
General Purpose	0	0	1			0	
<b>Subtotal</b>			<b>0</b>			<b>3,400</b>	
<b>Gymnasium</b>							
Gymnasium Area	4,200	390	1			4,200	
Change Rooms	400	37	2			800	
Storage	330	31	1			330	
Chair Storage	130	12	1			130	
<b>Subtotal</b>			<b>0</b>			<b>5,460</b>	
<b>Total OTG of all Instructional Spaces</b>			<b>600</b>				<b>123.5%</b>
<b>Total GFA of all Instructional Spaces (Ft<sup>2</sup>)</b>						<b>32,700</b>	

Room / Comments	Size (ft <sup>2</sup> )	Size (m <sup>2</sup> )	Number	Load	Capacity	Floor Area (ft <sup>2</sup> )	Ratio
<b>Regular classrooms</b>							
Kindergarten (Avg Size)	1,163	108	6	26	156	6,975	
Classroom (Avg Size)	743	69	20	23	460	14,854	
<b>Subtotal</b>			<b>616</b>			<b>21,829</b>	<b>121.3%</b>
<b>Other Classrooms &amp; Rooms</b>							
Art	1,238	115	1	23	23	1,238	
Science	1,560	145	1	23	23	1,560	
Music (Vocal)	1,205	112	1	23	23	1,205	
Music (Instrumental)	0	0	0			0	
Computer Laboratory	0	0	0	23	0	0	
Technical / Vocational	2,206	205	1	23	23	2,206	
Special Education	840	78	1	9	9	840	
Resources Room (Loaded)	441	41	2	12	24	882	
Resources Room (Unloaded)	0	0	0			0	
<b>Subtotal</b>			<b>125</b>			<b>7,931</b>	<b>135.8%</b>
<b>Other</b>							
Stage	0	0	0			0	
Library / Library Resource Centre	2,292	213	1			2,292	
General Purpose	0	0	1			0	
<b>Subtotal</b>			<b>0</b>			<b>2,292</b>	<b>67.4%</b>
<b>Gymnasium</b>							
Gymnasium Area	4,047	376	1			4,047	
Change Rooms	1,205	112	2			2,410	
Storage	560	52	1			560	
Chair Storage	193	18	1			193	
<b>Subtotal</b>			<b>0</b>			<b>7,210</b>	<b>132.1%</b>
<b>Total OTG of all Instructional Spaces</b>			<b>741</b>				<b>123.5%</b>
<b>Total GFA of all Instructional Spaces (Ft<sup>2</sup>)</b>						<b>39,262</b>	<b>120.1%</b>

Room / Comments	Size (ft <sup>2</sup> )	Size (m <sup>2</sup> )	Number	Load	Capacity	Floor Area (ft <sup>2</sup> )	Ratio
<b>Regular classrooms</b>							
Kindergarten (Avg Size)	0	0	26	0	0	0	
Classroom (Avg Size)	0	0	23	0	0	0	
<b>Subtotal</b>			<b>0</b>			<b>0</b>	<b>0.0%</b>
<b>Other Classrooms &amp; Rooms</b>							
Art	0	0	23	0	0	0	
Science	0	0	23	0	0	0	
Music (Vocal)	0	0	23	0	0	0	
Music (Instrumental)	0	0	0			0	
Computer Laboratory	0	0	23	0	0	0	
Technical / Vocational	0	0	23	0	0	0	
Special Education	0	0	9	0	0	0	
Resources Room (Loaded)	0	0	12	0	0	0	
Resources Room (Unloaded)	0	0	0			0	
<b>Subtotal</b>			<b>0</b>			<b>0</b>	<b>0.0%</b>
<b>Other</b>							
Stage	0	0	0			0	
Library / Library Resource Centre	0	0	0			0	
General Purpose	0	0	0			0	
<b>Subtotal</b>			<b>0</b>			<b>0</b>	<b>0.0%</b>
<b>Gymnasium</b>							
Gymnasium Area	0	0	0			0	
Change Rooms	0	0	0			0	
Storage	0	0	0			0	
Chair Storage	0	0	0			0	
<b>Subtotal</b>			<b>0</b>			<b>0</b>	<b>0.0%</b>
<b>Total OTG of all Instructional Spaces</b>			<b>0</b>				<b>0.0%</b>
<b>Total GFA of all Instructional Spaces (Ft<sup>2</sup>)</b>						<b>0</b>	<b>0.0%</b>

Room / Comments	Size (ft <sup>2</sup> )	Size (m <sup>2</sup> )	Number	Load	Capacity	Floor Area (ft <sup>2</sup> )	Ratio
<b>Regular classrooms</b>							
Kindergarten (Avg Size)	0	0	26	0	0	0	
Classroom (Avg Size)	0	0	23	0	0	0	
<b>Subtotal</b>			<b>0</b>			<b>0</b>	<b>0.0%</b>
<b>Other Classrooms &amp; Rooms</b>							
Art	0	0	23	0	0	0	
Science	0	0	23	0	0	0	
Music (Vocal)	0	0	23	0	0	0	
Music (Instrumental)	0	0	0			0	
Computer Laboratory	0	0	23	0	0	0	
Technical / Vocational	0	0	23	0	0	0	
Special Education	0	0	9	0	0	0	
Resources Room (Loaded)	0	0	12	0	0	0	
Resources Room (Unloaded)	0	0	0			0	
<b>Subtotal</b>			<b>0</b>			<b>0</b>	<b>0.0%</b>
<b>Other</b>							
Stage	0	0	0			0	
Library / Library Resource Centre	0	0	0			0	
General Purpose	0	0	0			0	
<b>Subtotal</b>			<b>0</b>			<b>0</b>	<b>0.0%</b>
<b>Gymnasium</b>							
Gymnasium Area	0	0	0			0	
Change Rooms	0	0	0			0	
Storage	0	0	0			0	
Chair Storage	0	0	0			0	
<b>Subtotal</b>			<b>0</b>			<b>0</b>	<b>0.0%</b>
<b>Total OTG of all Instructional Spaces</b>			<b>0</b>				<b>0.0%</b>
<b>Total GFA of all Instructional Spaces (Ft<sup>2</sup>)</b>						<b>0</b>	<b>0.0%</b>

Room / Comments	Size (ft <sup>2</sup> )	Size (m <sup>2</sup> )	Number	Load	Capacity	Floor Area (ft <sup>2</sup> )	Ratio
<b>Regular classrooms</b>							
Kindergarten (Avg Size)	0	0	26	0	0	0	
Classroom (Avg Size)	0	0	23	0	0	0	
<b>Subtotal</b>			<b>0</b>			<b>0</b>	<b>0.0%</b>
<b>Other Classrooms &amp; Rooms</b>							
Art	0	0	23	0	0	0	
Science	0	0	23	0	0	0	
Music (Vocal)	0	0	23	0	0	0	
Music (Instrumental)	0	0	0			0	
Computer Laboratory	0	0	23	0	0	0	
Technical / Vocational	0	0	23	0	0	0	
Special Education	0	0	9	0	0	0	
Resources Room (Loaded)	0	0	12	0	0	0	
Resources Room (Unloaded)	0	0	0			0	
<b>Subtotal</b>			<b>0</b>			<b>0</b>	<b>0.0%</b>
<b>Other</b>							
Stage	0	0	0			0	
Library / Library Resource Centre	0	0	0			0	
General Purpose	0	0	0			0	
<b>Subtotal</b>			<b>0</b>			<b>0</b>	<b>0.0%</b>
<b>Gymnasium</b>							
Gymnasium Area	0	0	0			0	
Change Rooms	0	0	0			0	
Storage	0	0	0			0	
Chair Storage	0	0	0			0	
<b>Subtotal</b>			<b>0</b>			<b>0</b>	<b>0.0%</b>
<b>Total OTG of all Instructional Spaces</b>			<b>0</b>				<b>0.0%</b>
<b>Total GFA of all Instructional Spaces (Ft<sup>2</sup>)</b>						<b>0</b>	<b>0.0%</b>

Spaces / Comments	Size (ft <sup>2</sup> )	Size (m <sup>2</sup> )	Number	Floor Area (ft <sup>2</sup> )	Ratio
<b>Non instructional spaces</b>					
General Administration Office	1,500	139	1	1,500	
Staff Lounge	950	88	1	950	
Kitchen	210	20	1	210	
Custodial	900	84	1	900	
Staff Work Room	0	0	1	0	
Meeting Room	300	28	1	300	
Academic Storage	530	49		530	
Washrooms	1,600	149		1,600	
<b>Subtotal</b>				<b>5,990</b>	
<b>Mechanical Spaces</b>					
Fan Room	1,500	139		1,500	
Boiler Room	540	50		540	
Mechanical Room	0	0		0	
Sprinkler Room	100	9		100	
Electrical Room	180	17		180	
Elevator/Machine Room	65	6		65	
LAN/WAN/Hub Room	165	15		165	
<b>Subtotal</b>				<b>2,550</b>	
<b>Total of all Operational Spaces</b>				<b>8,540</b>	
<b>Total of all Instr. &amp; Oper. Spaces</b>				<b>41,240</b>	

Spaces / Comments	Size (ft <sup>2</sup> )	Size (m <sup>2</sup> )	Number	Floor Area (ft <sup>2</sup> )	Ratio
<b>Non instructional spaces</b>					
General Administration Office	1,851	172	1	1,851	
Staff Lounge	635	59	1	635	
Kitchen	0	0	0	0	
Custodial	560	52	1	560	
Staff Work Room	290	27	1	290	
Meeting Room	247	23	1	247	
Academic Storage	0	0		0	
Washrooms	2,250	209		2,250	
<b>Subtotal</b>				<b>5,833</b>	<b>97.4%</b>
<b>Mechanical Spaces</b>					

ELEMENTARY SCHOOL SPACE TEMPLATE

Sample School

School Board:	Sample District School Board
Grade Range:	JK to 8
Program:	JK to 8
School Name:	Sample School
Proposed OTG Capacity:	553
Elementary Space Benchmark:	104.40 Square Feet per students
Maximum GFA (FF):	57,733 Square Feet per students X OTG

ELEMENTARY SCHOOL SPACE TEMPLATE

Milton#7

School Board:	XYZ District School Board
Grade Range:	JK to 8
Program:	JK to 8
School Name:	Milton#7
Proposed OTG Capacity:	741
Elementary Space Benchmark:	104.40 Square Feet per students
Maximum GFA (FF):	77,360 Square Feet per students X OTG

Room / Comments	Instructional Spaces					
	Size (ft <sup>2</sup> )	Size (m <sup>2</sup> )	Number	Load	Capacity	Floor Area (ft <sup>2</sup> )
<b>Regular classrooms</b>						
Kindergarten (Avg Size)	1,200	111	5	26	130	6,000
Classroom (Avg Size)	750	70	16	23	368	12,000
	<b>Subtotal</b>			<b>498</b>		<b>18,000</b>
<b>Other Classrooms &amp; Rooms</b>						
Art	1,050	98	1	23	23	1,050
Science	1,050	98	1	23	23	1,050
Music (Vocal)	0	0	1	23	23	0
Music (Instrumental)	1,040	97	1			1,040
Computer Laboratory	0	0	0	23	0	0
Technical / Vocational	0	0	0	23	0	0
Special Education	1,000	93	1	9	9	1,000
Resources Room (Loaded)	600	56	2	12	24	1,200
Resources Room (Unloaded)	250	23	2			500
	<b>Subtotal</b>			<b>102</b>		<b>5,840</b>
<b>Other</b>						
Stage	800	74	1			800
Library / Library Resource Centre	2,600	242	1			2,600
General Purpose	0	0	1			0
	<b>Subtotal</b>			<b>0</b>		<b>3,400</b>
<b>Gymnasium</b>						
Gymnasium Area	4,200	390	1			4,200
Change Rooms	400	37	2			800
Storage	330	31	1			330
Chair Storage	130	12	1			130
	<b>Subtotal</b>			<b>0</b>		<b>5,460</b>
<b>Total OTG of all Instructional Spaces</b>			<b>600</b>			<b>600</b>
<b>Total GFA of all Instructional Spaces (F<sup>2</sup>)</b>						<b>32,700</b>

Spaces / Comments	Operational Spaces			
	Size (ft <sup>2</sup> )	Size (m <sup>2</sup> )	Number	Floor Area (ft <sup>2</sup> )
<b>Non instructional spaces</b>				
General Administration Office	1,500	139	1	1,500
Staff Lounge	950	88	1	950
Kitchen	210	20	1	210
Custodial	900	84	1	900
Staff Work Room	0	0	1	0
Meeting Room	300	28	1	300
Academic Storage	530	49		530
Washrooms	1,600	149		1,600
	<b>Subtotal</b>			<b>5,990</b>
<b>Mechanical Spaces</b>				
Fan Room	1,500	139		1,500
Boiler Room	540	50		540
Mechanical Room	0	0		0
Sprinkler Room	100	9		100
Electrical Room	180	17		180
Elevator/Machine Room	65	6		65
LAN/WAN/Hub Room	165	15		165
	<b>Subtotal</b>			<b>2,550</b>
<b>Total of all Operational Spaces</b>				<b>8,540</b>
<b>Total of all Instr. &amp; Oper. Spaces</b>				<b>41,240</b>

Summary Information for Sample School	
Total Capacity	600
Instructional Area	32,700
Instructional Area per pupil place	54.5
Operational Area	8,540
Operational Area per pupil place	14.2
Gross Floor Area	56,911
Ratio of GFA to Instructional Area	1.74
Ratio of GFA to Instructional and Operational Area	1.38
Gross up factor - Circulation/Stairs/Walls (Suggested 38% of Instruc. & Oper.)	38.0%
Area of Circulation, Stairs and Walls (0.38 of Instructional and Operational)	15,671
Percent of GFA that is Circulation Area, Stairs and Walls	27.54%
Square Feet per student	94.85

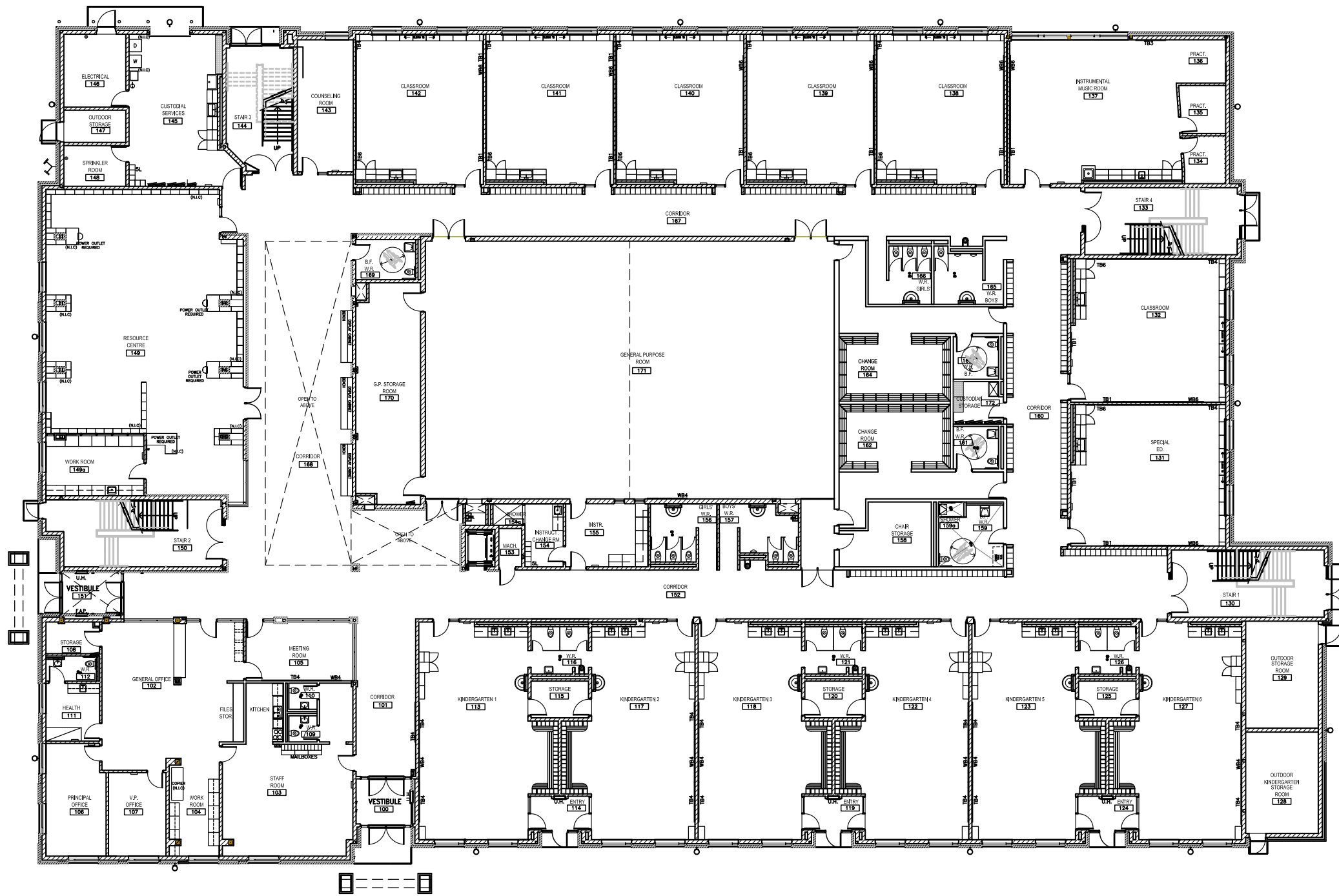
Other spaces not funded by EDU	
Child Care	0
Early Years Hub	0
Community Use	0
Other (type in purpose)	0
Other (type in purpose)	0
Other (type in purpose)	0
Other (type in purpose)	0
Other (type in purpose)	0
	<b>Subtotal</b>
	<b>0</b>
<b>Total Sample School Size</b>	
	<b>56,911</b>

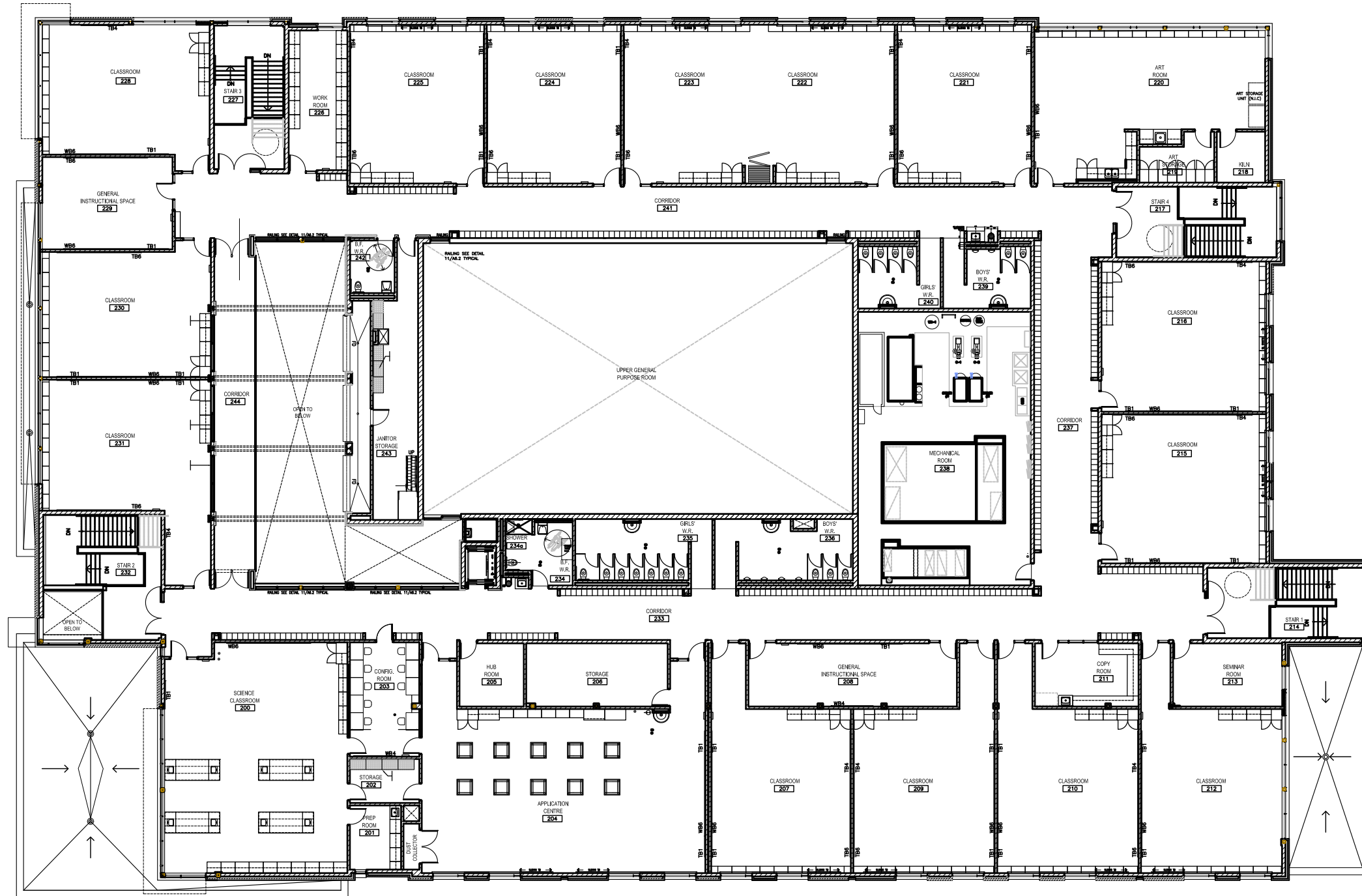
Room / Comments	Instructional Spaces					
	Size (ft <sup>2</sup> )	Size (m <sup>2</sup> )	Number	Load	Capacity	Floor Area (ft <sup>2</sup> )
<b>Regular classrooms</b>						
Kindergarten (Avg Size)	1,163	108	6	26	156	6,978
Classroom (Avg Size)	743	69	20	23	460	14,860
	<b>Subtotal</b>			<b>616</b>		<b>21,838</b>
<b>Other Classrooms &amp; Rooms</b>						
Art	1,238	115	1	23	23	1,238
Science	1,560	145	1	23	23	1,560
Music (Vocal)	1,205	112	1	23	23	1,205
Music (Instrumental)	0	0	0			0
Computer Laboratory	0	0	0	23	0	0
Technical / Vocational	2,206	205	1	23	23	2,206
Special Education	840	78	1	9	9	840
Resources Room (Loaded)	441	41	2	12	24	882
Resources Room (Unloaded)	0	0	0			0
	<b>Subtotal</b>			<b>125</b>		<b>7,931</b>
<b>Other</b>						
Stage	0	0	0			0
Library / Library Resource Centre	2,292	213	1			2,292
General Purpose	0	0	0			0
	<b>Subtotal</b>			<b>0</b>		<b>2,292</b>
<b>Gymnasium</b>						
Gymnasium Area	4,047	376	1			4,047
Change Rooms	1,205	112	2			2,410
Storage	560	52	1			560
Chair Storage	193	18	1			193
	<b>Subtotal</b>			<b>0</b>		<b>7,210</b>
<b>Total OTG of all Instructional Spaces</b>			<b>741</b>			<b>741</b>
<b>Total GFA of all Instructional Spaces (F<sup>2</sup>)</b>						<b>39,271</b>

Spaces / Comments	Operational Spaces			
	Size (ft <sup>2</sup> )	Size (m <sup>2</sup> )	Number	Floor Area (ft <sup>2</sup> )
<b>Non instructional spaces</b>				
General Administration Office	1,851	172	1	1,851
Staff Lounge	635	59	1	635
Kitchen	0	0	0	0
Custodial	560	52	1	560
Staff Work Room	290	27	1	290
Meeting Room	247	23	1	247
Academic Storage	0	0		0
Washrooms	2,250	209		2,250
	<b>Subtotal</b>			<b>5,833</b>
<b>Mechanical Spaces</b>				
Fan Room	0	0		0
Boiler Room	0	0		0
Mechanical Room	1,657	154		1,657
Sprinkler Room	97	9		97
Electrical Room	172	16		172
Elevator/Machine Room	86	8		86
LAN/WAN/Hub Room	140	13		140
	<b>Subtotal</b>			<b>2,152</b>
<b>Total of all Operational Spaces</b>				<b>7,985</b>
<b>Total of all Instr. &amp; Oper. Spaces</b>				<b>47,256</b>

Summary Information for Milton#7	
Total Capacity	741
Instructional Area	39,271
Instructional Area per pupil place	53.0
Operational Area	7,985
Operational Area per pupil place	10.8
Gross Floor Area	65,213
Ratio of GFA to Instructional Area	1.66
Ratio of GFA to Instructional and Operational Area	1.38
Gross up factor - Circulation/Stairs/Walls (Suggested 38% of Instruc. & Oper.)	38.0%
Area of Circulation, Stairs and Walls (0.38 of Instructional and Operational)	17,957
Percent of GFA that is Circulation Area, Stairs and Walls	27.54%
Square Feet per student	88.01

Other spaces within Milton#7	
Child Care	0
Early Years Hub	0
Community Use	0
Other (type in purpose)	0
Other (type in purpose)	0
Other (type in purpose)	0
Other (type in purpose)	0
Other (type in purpose)	0
	<b>Subtotal</b>
	<b>0</b>
<b>Total Milton#7 Size</b>	
	<b>65,213</b>







# Halton District School Board

---

Report Number: 11165

Date: November 3, 2011

## **INCIDENTAL INFORMATION**

TO: The Chair and Members of the  
Halton District School Board

FROM: Gerry Cullen, Superintendent of Facility Services

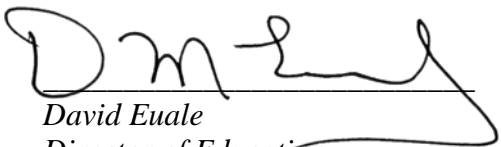
RE: Capital Update – November 2011

---

As per the schedule to report on capital projects, please find attached the chart showing recent activities in this regard for the month of October. The table has been modified to Appendix A, highlighting all FDK projects and specifics and Appendix B highlighting all portable placements and removals and the specifics regarding each.

*Respectfully submitted,*

  
Gerry Cullen  
Superintendent of Facility Services

  
David Euale  
Director of Education

## Capital Projects

**Updated: Nov. 3, 2011**

**Bolded notes indicate changes.**

School & Project Description	Pupil Places	Site Purchased	Permit Status				Construction (Tentative)		Start Date (Tentative)	Completion Date	Update Comments
			Site Plan (SPA)		Bldg. (BPA)		Tender	Award			
			Submt'd	Rec'd	Submt'd	Rec'd					
<b>New School Construction</b>											
<b>John W. Boich PS (Hossack &amp; Assoc. Arch.)</b>	704	Yes	Jan 24-10	Sept.10-10	June 1-10	Sept 15-10	Phase 1 = Mar. 10 Phase 2 = Close Aug. 19	Phase 1 = Apr. 10 Phase 2 = Sept.-10	Sept.20-10	Aug.-11	Work shortages are being completed. <b>Mechanical system has been commissioned.</b>
<b>SRA105 (Milton #1) HS (Allen &amp; Sherriff Arch.)</b>	1200	Yes	Apr. -10	Dec 17-10	Apr.6-10	Dec 17-10	Apr. 6-10, close May 6-10	July 8-10 Percon Construction Ltd.	Sept.-10	Sep-12	Work progressing and on schedule.
<b>SRA101 (Alton) HS (Svedas Koyanagi Arch.)</b>	1200	Yes	10-May	May.2011	Jan-11	July 25 2011	May .2011	Aug. 2011 Bonfield Construction	Sept.2011	Aug. 2013	<b>Construction progressing. Foundation work in progress and site servicing work in progress.</b>
<b>SRA103 (West Oak) HS (Hossack &amp; Assoc. Architects)</b>	1200	Yes	10-Feb		Sept 29-10	Nov.-10 (tent.)	Nov. -10	Jan.-11 (Tambro )	Jan.-11	Sept.-12	Work progressing and on schedule.
<b>ERA109 (Alton) PS (Snyder &amp; Assoc.)</b>	704	Yes	Apr. 15, 2011	Oct-11	July 15 2011	Oct. 2011	Aug 2011 (tent.)	Sept. 26, 2011 Everstrong Construction	Oct. 2011	Aug. 2012	<b>Site services are under way. Contractor has mobilized and fundations are underway.</b>
<b>ERA120 (Milton 7) PS (Allen &amp; Sherriff Arch.)</b>	741	No								Aug 2013 (tent.)	<b>Sketch plan drawings are being presented. Note capacity change due to Ministry loading change for JK/K rooms.</b>
<b>ERA121 (Milton 8) PS</b>	704	No									Awaiting Ministry approval/funding.

School & Project Description	Pupil Places	Site Purchased	Permit Status				Construction (Tentative)		Start Date (Tentative)	Completion Date	Update Comments
			Site Plan (SPA)		Bldg. (BPA)		Tender	Award			
			Submt'd	Rec'd	Submt'd	Rec'd					
<b>Addition and Renovation Projects</b>											
GDHS Additions & Reno's (Snyder & Assoc.)	Add 150	Own	Phase 2, Jan 29-10		Sept. 30-09	Phase 2, Dec. -09	May-09	6/9/2009 Percon Construction Ltd.	Jul-09	Aug. 15-10	Phase 3 complete. Still need to work out land deal with the HCDSB to receive final sign off.
New Central PS (PARC) (BJC Architects Inc)	Add 89 (PARC)	Own	Feb.-10	Aug.11-10	May-10	August 12-10	Apr-10	May 13-10 PM Contracting Ltd.	Aug. remobilized	Mar. 11-11	<b>Completed</b>
Maple Grove PS (PARC) Svedas Koyanagi Architects Inc.	Add 248 (PARC)	Own		10-Oct	May-10	Oct-10	May-10	June-1 10 PM Contracting Ltd.	Oct 19-10	<b>Sept 2- 2011</b>	<b>Substantial completion reached on October 15, 2011. Competing work shortages.</b>
Forest Trail PS Addn	Add 184	Own									Awaiting Ministry approval/funding.
<b>APPENDIX A</b>											
<b>FDK (Full Day Kindergarten) Projects</b>											
Bruce.T. Lindley PS (Stafford Haensil Arch.)	1 class addn.	Own	N/A		Nov 28-11		Mar-12		Jul-02-12	Sept 4/12	<b>Required JK/K rooms increased from 2 to 3 with no increase in funding. Redesign required. Revised timelines to follow.</b>
Chris Hadfield PS (Eric Connolly Arch.)	3 class reno	Own	N/A		Oct-11		<b>Dec-11</b>		<b>Mar-12</b>	Aug. 2012	Preparing Tender Documents
Cpt. R. Wilson PS (Allen & Sherriff Arch.)	2 class addn	Own	Sept. 27-11		Feb-12	Mar-12	Feb-12		<b>Mar-12</b>	Aug. 2012	Meetings between Principal, Board staff and architect have taken place. Design complete. Working drawings underway. SPA submitted.
Eastview PS (Allen & Sherriff Arch.)	2 class reno	Own	<b>SPA submitted Sept 27-11</b>	<b>Site alteration permit rec'd Sept. 22-11 No SPA</b>	Nov-11	Dec-11	Nov-11		<b>Jan-12</b>	Aug. 2012	Preparing Tender Documents. <b>Tender closes December 1, 2011.</b>

School & Project Description	Pupil Places	Site Purchased	Permit Status				Construction (Tentative)		Start Date (Tentative)	Completion Date	Update Comments
			Site Plan (SPA)		Bldg. (BPA)		Tender	Award			
			Submt'd	Rec'd	Submt'd	Rec'd					
Florence Meares PS (Stafford Haensil Arch.)	2 class addn.	Own	Submitted Sep 23, 2011		Nov 14 2011		Nov-21-11		Jan-02-12	Sep-12	Working drawings and tender documents 75% complete. Meeting with school staff to review the process and coordination of construction during occupied hours.
Gladys Speers PS (Allen & Sherriff Arch.)	4 class reno	Own	Site Alteration Permit Sept 27 2011	Site alteration permit rec'd Oct. 6-11 No SPA	Nov-11	Dec-11	Nov-11		Mar-12	Aug. 2012	Meetings between Principal, Board staff and architect have taken place. Design complete. Working drawings underway. Preparing Tender Documents. Tender closing Dec. 1.
Glenview PS (Stafford Haensil Arch.)	3 class reno	Own	N/A		Nov 28/11		Jan-11	Feb -12 (tent)	May-11	Aug. 2012	Meetings planned to discuss feasibility of starting renovation during occupied hours. Tender documents and working drawings in progress. Start date changed from July to May for September opening.
Harrison PS (Eric Connolly Arch.)	2 class reno	Own	N/A		Oct-11		Dec-11		Jan-12	Aug. 2012	Preparing Tender Documents
John.T.Tuck PS (Stafford Haensil Arch.)	1 class reno	Own	N/A		Nov 22/11		Feb-12 (tent)	Mar-12 (tent)	May -12 (tent)	Aug. 2012	Meetings planned to discuss feasibility of starting renovation during occupied hours. Tender documents and working drawings in progress. Start date changed from July to May for September opening.
Jos. Gibbons PS (Eric Connolly Arch.)	1 class reno	Own	N/A		Oct-11		Dec-11		Jan -12 (tent)	Aug. 2012	Preparing Tender Documents
Maplehurst PS (Stafford Haensil Arch.)	2 class reno	Own	N/A		Nov 28/11		Feb-12 (tent)	Mar 12 (tent)	Apr-12 (tent)	Aug. 2012	Meetings planned to discuss feasibility of starting renovation during occupied hours. Tender documents and working drawings in progress. Start date changed from July to April for September opening.
Martin Str. PS (Eric Connolly Arch.)	1 class reno	Own	N/A		Oct-11		Dec-11		Mar-12	Aug. 2012	Preparing Tender Documents

<i>School &amp; Project Description</i>	<i>Pupil Places</i>	<i>Site Purchased</i>	<i>Permit Status</i>				<i>Construction (Tentative)</i>		<i>Start Date (Tentative)</i>	<i>Completion Date</i>	<i>Update Comments</i>
			<i>Site Plan (SPA)</i>		<i>Bldg. (BPA)</i>		<i>Tender</i>	<i>Award</i>			
			<i>Submt'd</i>	<i>Rec'd</i>	<i>Submt'd</i>	<i>Rec'd</i>					
<b>Paul .A. Fisher PS (Stafford Haensil Arch.)</b>	1 class reno	Own	N/A		<b>Nov 21 2011</b>		<b>Mar-12 (tent)</b>	<b>Apr-12 (tent)</b>	<b>May -12 (tent)</b>	Aug. 2012	<b>Meetings planned to discuss feasibility of starting renovation during occupied hours. Tender documents and working drawings in progress. Start date changed from July to April for September opening.</b>

School & Project Description	Pupil Places	Site Purchased	Permit Status				Construction (Tentative)		Start Date (Tentative)	Completion Date	Update Comments
			Site Plan (SPA)		Bldg. (BPA)		Tender	Award			
			Submt'd	Rec'd	Submt'd	Rec'd					
<b>Park PS (Eric Connolly Arch.)</b>	2 class reno	Own	N/A		Oct-11		<b>Dec-11</b>		<b>Jan -12 (tent)</b>	Aug. 2012	Preparing Tender Documents
<b>Post's Corners PS (Allen &amp; Sherriff Arch.)</b>	3 class addn.	Own	27-Sep-11		Feb-12	Mar-12	Feb-12			Aug. 2012	Meetings between Principal, Board staff and architect have taken place. Design complete. Working drawings underway. SPA submitted.
<b>Rbt. Baldwin PS (Eric Connolly Arch.)</b>	2 class reno	Own	N/A		Oct-11		<b>Dec-11</b>		<b>Jan -12 (tent)</b>	Aug. 2012	Preparing Tender Documents
<b>Rbt. Little PS (MMMC Architect Inc.)</b>	3 Class reno	Own	N/A	N/A	Apr-11	May-11	Apr-11	May-11	Jul-11	Aug-11	<b>Substantially complete. Correcting work shortages.</b>
<b>River Oaks PS (Allen &amp; Sherriff Arch.)</b>	3 class addn.	Own	27-Sep-11		Feb-12	Mar-12	Feb-12			Aug. 2012	Meetings between Principal, Board staff and architect have taken place. Design complete. Working drawings underway. <b>Committee of Adjustment/Zoning Dept. advised that minor variance not required (public schools exempt from site coverage, Oct. 3, 2011.</b>
<b>Ryerson PS (Stafford Haensil Arch.)</b>	3 class reno	Own	N/A		Nov 21 2011		Mar-12	<b>Apr-12 (tent)</b>	<b>May-12 (tent)</b>	Aug-12	<b>Meetings planned to discuss feasibility of starting renovation during occupied hours. Tender documents and working drawings in progress. Start date changed from July to April for September opening.</b>
<b>Silver Creek PS (Allen &amp; Sherriff Arch.)</b>	3 class addn.	Own	<b>17-Oct-11</b>		Feb-12	Mar-12	Feb-12		<b>Mar-12</b>	Aug. 2012	Meetings between Principal, Board staff and architect have taken place. Design complete. Working drawings underway. SPA process underway. <b>Committee of Adjustment Minor Variance Sept 6, 2011. Committee of Adjustment on Oct 5 for parking spaces approved. Appeal period expired Oct 25, 2011 with no appeals. Minor Variance finalized.</b>

School & Project Description	Pupil Places	Site Purchased	Permit Status				Construction (Tentative)		Start Date (Tentative)	Completion Date	Update Comments
			Site Plan (SPA)		Bldg. (BPA)		Tender	Award			
			Submt'd	Rec'd	Submt'd	Rec'd					
<b>APPENDIX B</b>											
<b>Portables (BJC Architects)</b>											
Alexander's PS (remove 12 portables (Starfleet))		moving to PL.Robertson & TJSingh			Jun-15-11	July-12-11			Jul-18-Aug-22	Aug 29-11	Architectural inspection complete.
Chisholm PS (remove 2 portables (Starfleet))		moving to Pine Grove & EJJ	Yes	Yes	Jun-10-11	Jul-6-11			Jul-18-Aug-22	Aug 29-11	Architectural inspection complete.
JM Denyes PS(remove 5 portables (Design 4))		moving to Hawthorne & MDHS		Yes	Jun-10-11	Jul-6-11			Jul-18-Aug-22	Aug 29-11	All inspections complete.
Mohawk Gardens PS (remove 2 portables (Starfleet))		moving to MSB & Tom Thompson			Jun-15-11	Jul-12-11			Aug 19-11	Aug 29-11	All inspections complete.
Orchard Park PS (remove 11 portables (Design 4))		moving to Emily Carr, Joshua Cr & Palermo			Jun-15-11	Jul-11-11			Jul-18-Aug-22	Aug 29-11	Jun-8-11 drwg ready for tender / 8/12 portables removed, site restoration work still to be done. Aug 29th - Fire Alarm Verification Received.
CH Norton PS (place 2 portables (Starfleet))		new lease	zoning - approved July 29-11	Jul-4-11	Jul-7-11	Aug-4-11			Jul-18-Aug-22	Aug 29-11	All inspecions complete.
Clarksdale PS (place 2 portables (Starfleet))		new lease	zoning - submt'd. July 29-11		Aug 15-11	Sep-15-11			Aug 25-11	Oct 17-11	All inspecions complete.
EC Drury HS (place 4 portables (Design 4))		new lease			Jun-10-11	Jul-14-11			July 27-11	Oct 27-11	
Emily Carr PS (place 2 portables (Design 4))		from Orchard Park, leased	site alteration Jun-10-11	Jul-06-11	Jun-10-11	Jul-07-11			Jul 25-11	Aug 29-11	All inspections complete.
Escarpment View PS (place 2 portables (Starfleet))		new lease			July 29-11	Aug-11-11			Aug 22-11	Oct 17-11	All inspections complete.

School & Project Description	Pupil Places	Site Purchased	Permit Status				Construction (Tentative)		Start Date (Tentative)	Completion Date	Update Comments
			Site Plan (SPA)		Bldg. (BPA)		Tender	Award			
			Submt'd	Rec'd	Submt'd	Rec'd					
EW Foster PS (place 1 portbale (Design 4))					Jul-29-11	Aug-11-11			Aug 25-11	Aug 31-11	All inspections complete.
Gladys Speers PS (place 1 portable (Starfleet))		from Chisholm		Aug 12-11	Jul-29-11	Aug-30-11			Aug 31-11	Sept 12-11	All inspections complete.
Hawthorne Village PS (place 3 portable (Design 4))		2 from JM.Denyas 1 new lease			Jun-10-11 Jul-29-11	Jul-14-11 Aug-17-11			Aug 4-25, 2011	Aug 31-11	All inspections complete.
Joshua Creek PS (place 1 portable (Design 4))		from Orchard Park	site alteration Jun-10-11	Jul-06-11	Jun-10-11	Jul-07-11			Jul-18-Aug-22	Aug 29-11	All inspections complete.
McKenzie-Smith Bennett PS (place 1 portable (Starfleet))		from Mohawk	Yes	Yes	Jun-10-11	Aug-5-11			Aug 19-11	Aug 29-11	All inspections complete.
Milton District HS (place 3 portables (Design 4))		from JM.Denyas & 2 new lease			Jun-10-11	Aug-11-11			Aug 19-26, 2011	Aug31-11	All inspections complete.
PL Robertson PS (place 6 portables (Starfleet))		from Alexander's			Jun-10-11	Jul-14-11			Jul-18-Aug-22	Aug 29-11	All inspections complete.
PL Robertson PS (place 6 more portables (Starfleet))										Nov or Dec 2011	Aug-08-11 instructed BJC to proceed with these additional 6 portables, they will create site servicing drwg and apply for new hydrant permit followed by the building permit
Palermo PS (place 6 portables (Design 4))		from Orchard Park	site alteration Jun-10-11	Jul-06-11	Jun-10-11	Jul-07-11			Aug 11-11	Aug 29-11	All inspections complete. July 18-11 contractor noted potential drainage problem. Change Order issued July 19-11 to provide french drain. Portables shifted slightly to accommodate location of hydro vault.
Pine Grove PS (place 1 portable (Starfleet))		from Chisholm	site alteration Jun-10-11	Jul-06-11	Jun-10-11	Jul-07-11			Aug 12-11	Aug 29-11	All inspections complete.

School & Project Description	Pupil Places	Site Purchased	Permit Status				Construction (Tentative)		Start Date (Tentative)	Completion Date	Update Comments
			Site Plan (SPA)		Bldg. (BPA)		Tender	Award			
			Submt'd	Rec'd	Submt'd	Rec'd					
Tiger J Singh (place 6 portables (Starfleet))		from Alexander's			Jun-10-11	Jul-14-11			Aug 3-11	Aug 29-11	All inspections complete.
Tom Thompson PS (place 1 portable (Starfleet))		from Mohawk	zoning	Jul-04-11	Jul-07-11	Aug-04-11			Aug 19-11	Aug 29-11	All inspections complete.
White Oaks SS SOUTH (place 2 portables (Starfleet))		new lease	site alteration Jun-10-11	Jul-06-11	Jun-10-11	Aug-03-11			Aug 17-11	Aug 29-11	Jun-08-11 drwg ready for tender / Jul-20-11 advised BJC 4 of original 6 portables are going to North campus. <b>Sept 27 Occupiable</b>
White Oaks SS NORTH (place 4 portables (Starfleet))		new lease	site alteration Aug-4-11	Aug-12-11	Aug-04-11	Aug-31-11			Sept 8-11	Oct 17-11	Jul-20-11 decided to place 4 of 6 portables assigned to WOSS-sout to WOSS-north to avoid costly installation of roads & hydrants / Jul-22-11 site plan drwg received from HDSB. All 4 portables are currently being wired. Fire alarm and ESA are being scheduled for the near future and occupancy/final inspection will follow shortly after that.
Falgarwood (remove 1 portable)		move to Palermo	Yes	Yes	Oct 7-11				Nov 14-11	Dec 2-11	Sept 23-11 drawing ready for permit submission.
Palermo PS (add 1 portable)		from Falgarwood			Oct 7-11				Nov 14-11 (tent)	Dec 2 - 11 (tent)	Sept 23-11 drawing ready for permit submission.
Sam Sherratt PS (remove 2 portable)		move to Rbt. Baldwin PS & J.T. Tuck PS									Sept 23-11 drawing ready for permit submission.
John T. Tuck PS (add 1 portable)		from Sam Sherratt PS	zoning submt'd. Oct 7-11		Oct 20-11				Nov 14-11 (tent)	Dec 2 - 11 (tent)	Sept 23-11 drawing ready for permit submission.
Rbt. Baldwin PS (add 1 portable)		from Sam Sherratt PS			Oct 7-11				Nov 14-11	Dec 2-11	Sept 23-11 drawing ready for permit submission.
Escarpment View PS (add 1 portable)		new lease			Oct 7-11				Nov 14-11	Dec 2-11	Sept 23-11 drawing ready for permit submission.



# Halton District School Board

---

Report Number: 11162

Date: November 9, 2011

**INCIDENTAL INFORMATION**

TO: The Chair and Members of the  
Halton District School Board

FROM: Gerry Cullen, Superintendent of Facility Services

RE: Drinking Water Report 2011

---

Background:

The Province of Ontario is responsible for setting the standards and testing criteria for drinking water. The Provincial regulations have been modified twice in the last few years. The Ministry of Education also generated guidelines specific to schools related to drinking water to further provide confidence in the health of local drinking water. Our staff have been modifying our monitoring, record keeping and flushing durations to meet the requirement of these directives.

Ontario Regulation 243/07 has been enhanced to provide increased protection for children, especially children under the age of seven (7) who are particularly vulnerable to the effects of lead. For the purposes of this Regulation, a school is open on a day if, at any time during that day, programs for children under 18 years of age are held at the school.

Attached you will find the HDSB 2011 Water Testing for Lead Summary Report for all schools as per Ontario Regulation 243/07 Schools, Private schools and Day Nurseries

A private company was retained to take samples of drinking water at all our schools and submit samples to a licensed laboratory.

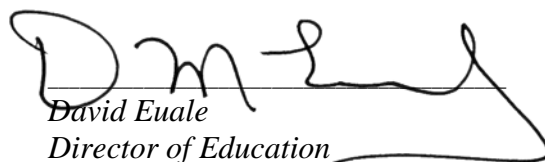
Eight (8) schools; Mohawk Gardens, Pineview, Ryerson, Maplehurst, Tecumseh, WH Morden, EJ James Public Schools and the Howard Wigglesworth school location and had lead exceedances that were above the Ministry of Environment acceptable levels for lead, before and after regular flushing. Schools that had lead exceedances before flushing required the school to flush daily for five (5) minutes. Schools that had lead exceedances on the flushed samples required additional testing and corrective actions to be compliant with Ontario Reg.243/07.

All schools are in compliance and are maintaining the respective flushing frequencies and durations. Facility Services has provided all schools, daycare and before/after providers with water results as required by Ont. Reg. 243/07.

The results can be viewed at: <http://www.hdsb.ca/aboutus/FacilityServices/Pages/Maintenance.aspx>

*Respectfully submitted,*

  
Gerry Cullen  
Superintendent of Facility Services

  
David Euale  
Director of Education

HALTON DISTRICT SCHOOL BOARD

2011 Water Testing for Lead

School Name	Year Opened	LEAD CONCENTRATION (ug/L)		Date (dd/mm/yy)	Time of Sampling	
		Guideline/Standard = 10 ug/L			Standing	Flushed
		Standing	Flushed			
1 Abbey Lane PS	1985	2.7	ND	06/07/11	5:22 AM	5:58 AM
2 Abbey Park HS	2003	1.9	ND	09/07/11	2:34 PM	3:10 PM
3 Acton District HS	1976	2.9	2	16/07/11	1:36 PM	2:12 PM
4 Aldershot HS	1960	5.9	2.8	23/07/11	7:41 AM	8:17 AM
5 Alexander's PS	2005	ND	ND	04/08/11	8:28 AM	9:04 AM
6 Brant Hills PS	1985	1.6	0.6	29/7/11	8:19 AM	8:55 AM
7 Brantwood PS	1921	4.9	2.4	09/07/11	9:29 AM	10:05 AM
8 Brookdale PS	1958	2.8	ND	09/07/11	12:36 PM	1:12 PM
9 Brookville PS	1960	5.3	1.2	17/07/11	2:12 PM	2:48 PM
10 Bruce T. Lindley PS	1981	6.3	1.2	29/7/11	8:28 AM	9:04 AM
11 Bruce Trail PS	2005	ND	ND	17/07/11	8:06 AM	8:42 AM
12 Burlington Central HS	1922	3.9	ND	23/07/11	9:53 AM	10:29 AM
13 C.H. Norton PS	1990	1.7	ND	06/08/11	10:16 AM	10:52 AM
14 Captain R. Wilson PS	2003	ND	ND	09/07/11	3:42 PM	4:18 PM
15 Centennial PS	1965	3.9	1.8	16/07/11	11:02 AM	11:38 AM
16 Central PS	1919	ND	ND	23/7/11	10:06 AM	10:42 AM
17 Charles R. Beaudoin PS	2002	ND	ND	06/08/11	9:24 AM	10:00 AM
18 Chisholm PS	1974	3.5	1.4	09/07/11	6:48 AM	7:24 AM
19 Chris Hadfield PS	2002	1.1	ND	17/07/11	7:15 AM	7:51 AM
20 Clarksdale PS	1955	1.4	1.2	04/08/11	11:27 AM	12:03 PM
21 Dr. Charles Best PS	1972	5	1.5	08/08/11	11:19 AM	11:55 AM
22 E.C. Drury HS	1979	1.8	1.3	29/7/11	9:44 AM	10:20 AM
23 E.J. James PS	1957	15	3.7	09/07/11	8:02 AM	8:38 AM
24 E.W. Foster PS	1982	3.6	2.9	17/07/11	9:07 AM	9:43 AM
25 Eastview PS	1961	9.8	7.4	09/07/11	1:31 PM	2:07 PM
26 Emily Carr PS (new)	2008	ND	ND	09/07/11	4:56 PM	5:32 PM
27 Escarpment View PS	2009	4.2	3.4	17/07/11	12:25 PM	1:01 PM
28 Falgarwood PS	1966	3.2	ND	25/06/11	8:35 AM	9:11 AM
29 Florence Meares PS	2001	ND	ND	06/08/11	9:34 AM	10:10 AM
30 Forest Trail PS	2006	ND	ND	09/07/11	4:43 AM	5:19 AM
31 Frontenac PS	1966	0.7	0.5	23/07/11	2:09 PM	2:45 PM
32 Gardiner PS (new)	2009	3.7	1.2	16/07/11	8:26 AM	9:02 AM
33 Gary Allan HS	1967	7.6	3.5	23/07/11	12:08 PM	12:44 PM
34 George Kennedy PS	1959	6	1.6	16/07/11	10:08 AM	10:44 AM
35 Georgetown District HS	1951	1.1	0.5	16/07/11	11:19 AM	11:55 AM
36 Gladys Speers PS	1959	1.7	2.3	09/07/11	1:15 PM	1:51 PM
37 Glen Williams PS	1949	2.6	1.7	16/07/11	2:45 PM	3:21 PM
38 Glenview PS	1951	2.2	1.1	23/07/11	7:51 AM	8:27 AM
39 Harrison PS	1956	0.5	0.8	16/07/11	11:28 PM	12:04 PM
40 Hawthorne Village PS	2004	ND	ND	17/07/11	8:16 AM	8:52 AM
41 Heritage Glen PS	1993	0.6	1.4	09/07/11	2:47 PM	3:23 PM
42 Howard Wigglesworth PS	1951	34	2.8	29/7/11	10:53 AM	11:29 AM
43 Iroquois Ridge HS	1993	2.1	0.6	25/06/11	7:35 AM	8:11 AM
44 J.M. Denyes PS	1955	3.5	2.3	17/07/11	12:09 PM	12:45 PM
45 J.W. Singleton Ed. Centre	1962	2.4	1.1	06/08/11	12:34 PM	1:10 AM
46 James W. Hill P.S.	2010	0.8	1.2	29/7/11	4:29 AM	5:05 AM
47 John T. Tuck PS	1960	2.8	ND	23/07/11	12:18 PM	12:54 PM
48 John W Boich	2011	4.7	3.9	23/9/11	6:25 AM	7:00 AM
49 Joseph Gibbons PS	1969	4.9	4.7	16/07/11	2:36 PM	3:12 PM
50 Joshua Creek PS	2004	ND	ND	25/07/11	7:18 AM	7:54 AM
51 Kilbride PS	1959	6.3	1.3	17/07/11	1:17 PM	1:53 PM
52 King's Road PS	1955	7.8	0.7	23/07/11	8:57 AM	9:33 AM
53 Lakeshore PS	1920	5.5	ND	23/07/11	9:44 AM	10:20 AM
54 Lester B. Pearson HS	1975	6.6	0.9	06/08/11	10:38 AM	11:14 AM
55 Limehouse PS	1961	7.5	2.1	16/07/11	12:32 AM	1:08 PM
56 Linbrook PS	1932	2.5	1.4	09/07/11	8:15 AM	8:51 AM
57 Lorne Skuce PS	1953	1.8	1.2	25/06/11	9:26 AM	10:02 AM
58 M.M. Robinson HS	1962	0.8	0.5	06/08/11	12:22 PM	12:58 PM
59 M.S. Bennett P.S.	1956	2.9	2.8	16/07/11	1:46 PM	2:22 PM
60 Maple Grove PS	1872	1.7	ND	09/07/11	7:03 AM	7:39 AM

HALTON DISTRICT SCHOOL BOARD

2011 Water Testing for Lead

	School Name	Year Opened	LEAD CONCENTRATION (ug/L) Guideline/Standard = 10 ug/L		Date (dd/mm/yy)	Time of Sampling	
			Standing	Flushed		Standing	Flushed
			61	Maplehurst PS		1912	13
62	Martin Street PS	1919	3.9	1.9	17/07/11	10:26 AM	11:02 AM
63	Milton District HS	1959	4	0.8	17/07/11	11:30 AM	12:06 PM
64	Mohawk Gardens PS	1967	12	1.1	23/07/11	3:10 PM	3:46 PM
65	Montclair Sr. PS	1968	1.2	ND	25/07/11	9:46 AM	10:22 AM
66	Munn's PS	1955	1.1	1	25/06/11	10:53 AM	11:29 AM
67	Nelson HS	1956	8.2	ND	23/07/11	1:06 PM	1:42 PM
68	New Central PS	1958	8.2	8.9	09/07/11	9:08 AM	9:44 AM
69	Oakville Trafalgar HS	1991	1.4	ND	09/07/11	7:12 AM	7:48 AM
70	Oakwood PS	1951	1.1	1.5	09/07/11	10:34 AM	11:10 AM
71	Orchard Park PS	2002	0.5	ND	04/08/11	8:41 AM	9:17 AM
72	P.L. Robertson PS	2010	1.7	1	17/07/11	11:18 AM	11:54 AM
73	Palermo PS	2010	ND	ND	09/07/11	3:55 PM	4:31 PM
74	Park PS	1958	2.5	1.9	16/07/11	12:19 AM	12:55 PM
75	Paul A. Fisher PS	1974	ND	ND	29/07/11	8:11 AM	8:47 AM
76	Pauline Johnson PS	1967	7.8	1	23/07/11	1:18 PM	1:54 PM
77	Pilgrim Wood PS	1989	ND	ND	09/07/11	2:25 PM	3:01 PM
78	Pine Grove P	1956	2.5	1	09/07/11	12:19 PM	12:55 PM
79	Pineland PS	1962	2.6	0.6	23/07/11	2:59 PM	3:35 PM
80	Pineview PS	1962	500	170	29/07/11	10:35 AM	11:11 AM
1500			390	06/08/11	8:04 AM	8:47 AM	
43			25		8:07 AM	8:47 AM	
94			83	11/08/11	7:35 AM	8:20 AM	
28			33		7:35 AM	8:20 AM	
200			130	12/08/11	2:35 PM	3:20 PM	
73			35		2:36 PM	3:21 PM	
100			74		2:35 PM	3:20 PM	
10			2.1	17/08/11	8:17 AM	9:08 AM	
12000			1		8:17 AM	9:08 AM	
110			25		8:20 AM	9:10 AM	
11			3.9		8:19 AM	9:10 AM	
47			18		8:17 AM	9:10 AM	
13			5	23/08/11	7:49 AM	8:25 AM	
68			4.5		7:51 AM	8:27 AM	
310			34		7:50 AM	8:26 AM	
4.8			1.5	25/08/11	7:52 AM	8:28 AM	
5.3			2.2		7:52 AM	8:28 AM	
32			7.3		7:53 AM	8:29 AM	
8.1			1.9	01/09/11	6:59 AM	7:35 AM	
11	3.5		7:00 AM	7:36 AM			
21	5.8		7:00 AM	7:36 AM			
81	Post's Corners PS	2000	ND	ND	25/06/11	12:12 PM	12:48 PM
82	River Oaks PS	1989	ND	ND	25/06/11	12:00 PM	12:36 PM
83	Robert Baldwin PS	1973	3	2.3	17/07/11	6:56 AM	7:32 AM
84	Robert Bateman HS	1969	4.4	0.6	23/07/11	2:21 PM	2:57 PM
85	Robert Little PS	1950	2.7	1.8	16/07/11	1:23 PM	1:59 PM
86	Rolling Meadows PS	1960	0.007	0.0031	10/08/11	12:12 PM	12:48 PM
87	Ryerson PS	1967	9.8	32	23/07/11	11:58 AM	12:34 PM
4.9			2.5	02/08/11	5:49 AM	6:29 AM	
24			3.5		5:49 AM	6:29 AM	
4.6			1		5:50 AM	6:30 AM	
4.4			2.8	19/08/11	6:30 AM	7:15 AM	
25			4.9		6:30 AM	7:15 AM	
3.4			1		6:30 AM	7:15 AM	
88	Sam Sherratt PS	1979	4.1	2.5	17/07/11	9:21 AM	9:57 AM
89	Sheridan PS	1979	0.8	0.7	25/06/11	8:26 AM	9:02 AM
90	Silver Creek PS	2002	1.7	1.1	16/07/11	9:43 AM	10:19 AM
91	Sir Ernest MacMillan PS	1977	9.3	2.9	04/08/11	10:26 AM	11:02 AM
92	Stewarttown PS	1957	3.8	1.3	16/07/11	8:46 AM	9:22 AM
93	Sunningdale PS	1959	0.7	ND	25/06/11	10:44 AM	11:20 AM

HALTON DISTRICT SCHOOL BOARD

2011 Water Testing for Lead

	<u>School Name</u>	Year Opened	LEAD CONCENTRATION (ug/L) Guideline/Standard = 10 ug/L		Date (dd/mm/yy)	Time of Sampling	
			Standing	Flushed		Standing	Flushed
			94	T.A. Blakelock HS		1955	2.1
95	Tecumseh PS	1964	<b>15</b>	<b>2</b>	23/07/11	11:06 AM	11:42 AM
96	Tom Thomson PS	1969	2.4	3.6	23/07/11	10:55 AM	11:31 AM
97	W.H. Morden PS	1953	<b>87</b>	<b>34</b>	09/07/11	10:47 AM	11:23 AM
1.3			5.3	21/07/11	5:48 AM	6:28 AM	
4.3			1.3	29/07/11	6:07 AM	6:47 AM	
98	W.I. Dick PS	1957	6.3	6.1	17/07/11	10:14 AM	10:50 AM
99	West Oak PS	2001	ND	ND	06/07/11	5:40 AM	6:16 AM
100	White Oaks S.S. North Campus	1969	2	0.5	25/06/11	10:34 AM	11:10 AM
101	White Oaks S.S. South Campus	1964	1	1	25/06/11	9:38 AM	10:14 AM

ND = Not Detected

 denotes exceedence