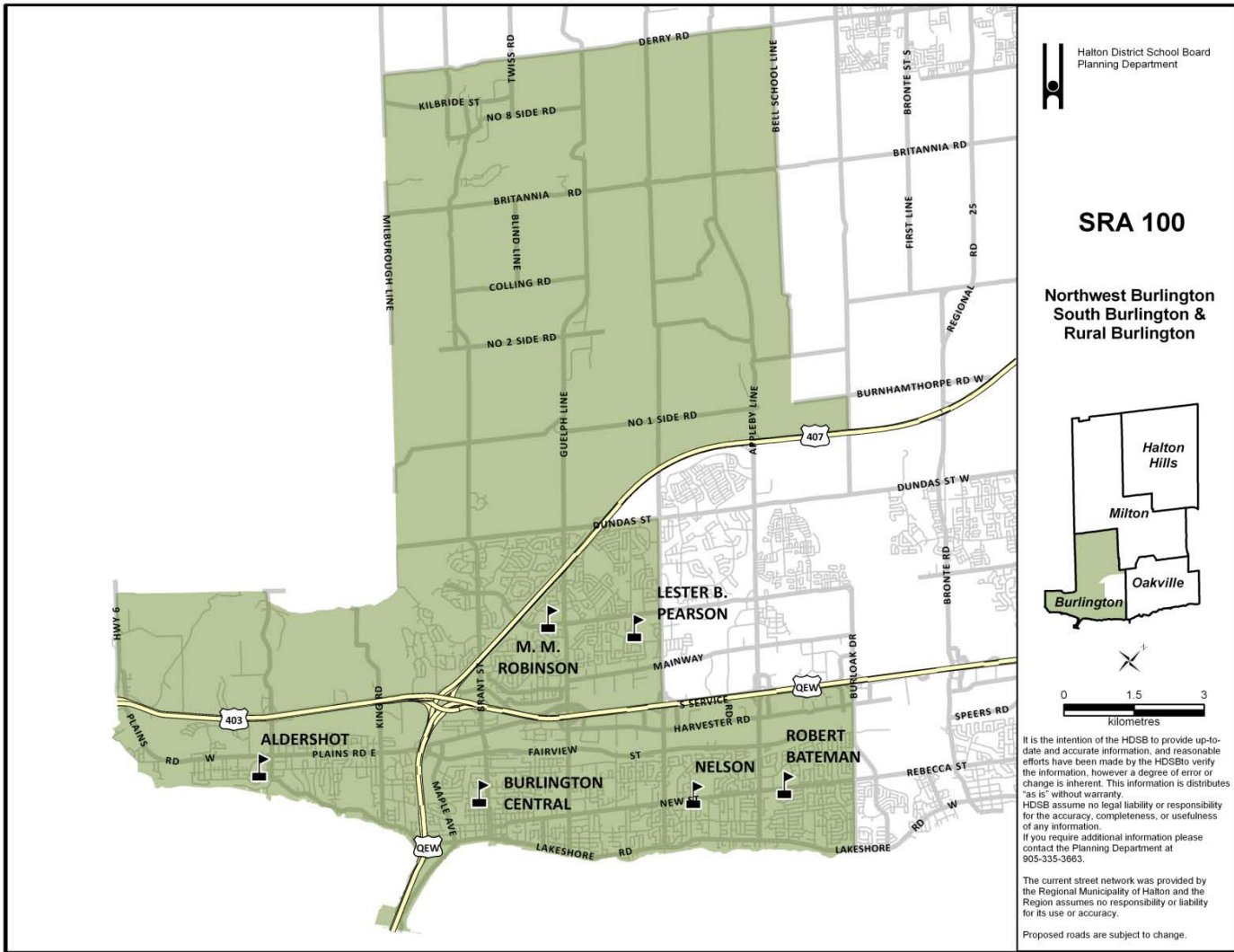




Halton District School Board



SECONDARY



SRA 100 – Northwest Burlington, South Burlington, Rural Burlington

SRA Trend

- School enrolments have stabilized with a slow decline below OTG capacity.
- Will decline once new Burlington NE hs is built
- Total utilization is above 80% (2010 -2019)

Portable Requirements

- Lester B Pearson H.S. – Twelve (12) portables are on site. Portables will continue to be required for Lester B. Pearson H. S. for 2012.
- MM Robinson H.S. – Three (3) portables are on site.

Housing Development

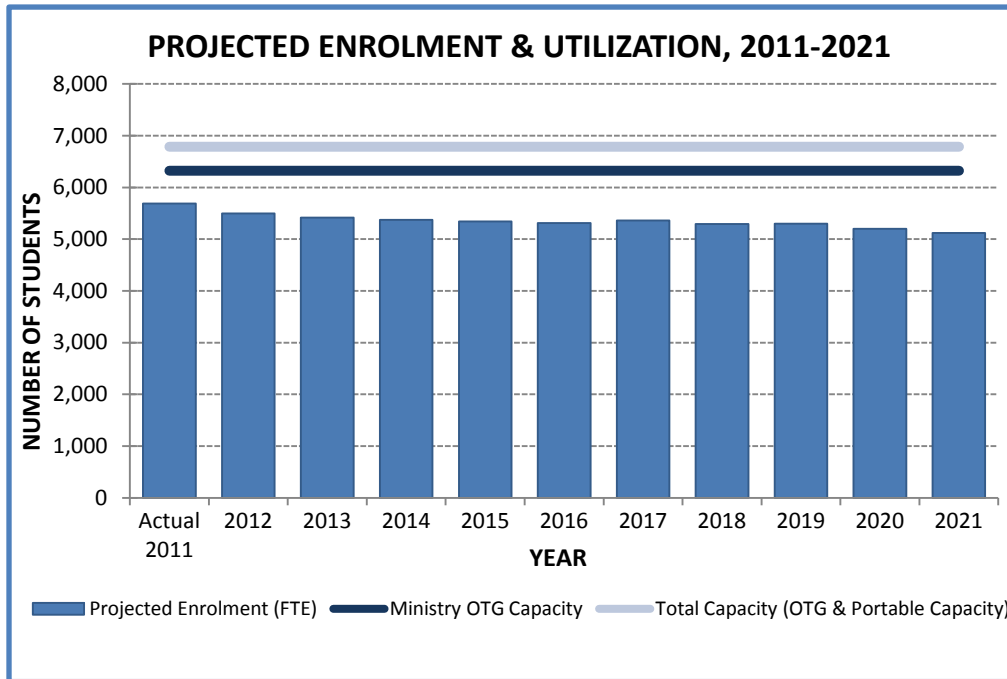
- Major streets in Aldershot and central Burlington have been identified as urban growth areas, most development is infill.
- New subdivision development in SRA 101 contributes to high utilization of Lester B. Pearson H.S., M.M. Robinson H.S., Nelson H.S. and Robert Bateman H.S.

Overview

- French Immersion enrolments are stable at Aldershot H.S., and growing at M.M. Robinson H.S., Burlington Central H.S., and Nelson H.S.
- Late French Immersion enrolment is stable at Lester B. Pearson H.S.
- English enrolments are declining at all secondary schools.
- Robert Bateman offers several SPED programs including Essential, IB program and is a secondary centre.
- Roughly a third of students elect to remain in grade 12 for an additional year at Aldershot H.S., Lester B Pearson H.S. and Robert Bateman H.S.
- Opening of new school will cause enrolment to decrease in most schools
- If current trends continue, Burlington Central H.S. enrolments will drop to below 60% utilization, by 2016.
- Lester B Pearson H.S. enrolments have been declining since 2004. It is expected to drop below 100% OTG capacity by 2019.
- Nelson H.S. will remain above 100% capacity post 2021.
- SPED (gifted) at Charles R. Beaudoin P.S. are direct to Nelson H.S.
- Opening of the proposed Burlington NE hs (2013) will cause enrolment to drop in most schools.
- A boundary review for the proposed Burlington NE hs will be initiated in early 2012.

Total Projected Enrolment & Capacity

	Actual 2011	2012	2013	2014	2015	2016	2017	2018	2019	2020	2021
Projected Enrolment (FTE)	5,686	5,499	5,420	5,376	5,341	5,310	5,361	5,291	5,302	5,203	5,118
Ministry OTG Capacity	6,324	6,324	6,324	6,324	6,324	6,324	6,324	6,324	6,324	6,324	6,324
Portables	15										
Portable Capacity	460	460	460	460	460	460	460	460	460	460	460
Total Capacity (OTG & Portable Capacity)	6,784	6,784	6,784	6,784	6,784	6,784	6,784	6,784	6,784	6,784	6,784



ERA Schools		
SCHOOL	ENG	FI
ALDERSHOT	9-12	9-12
BURLINGTON CENTRAL	9-12	9-12
LESTER B. PEARSON	9-12	9-12
M.M. ROBINSON	9-12	9-12
NELSON	9-12	9-12
ROBERT BATEMAN	9-12	

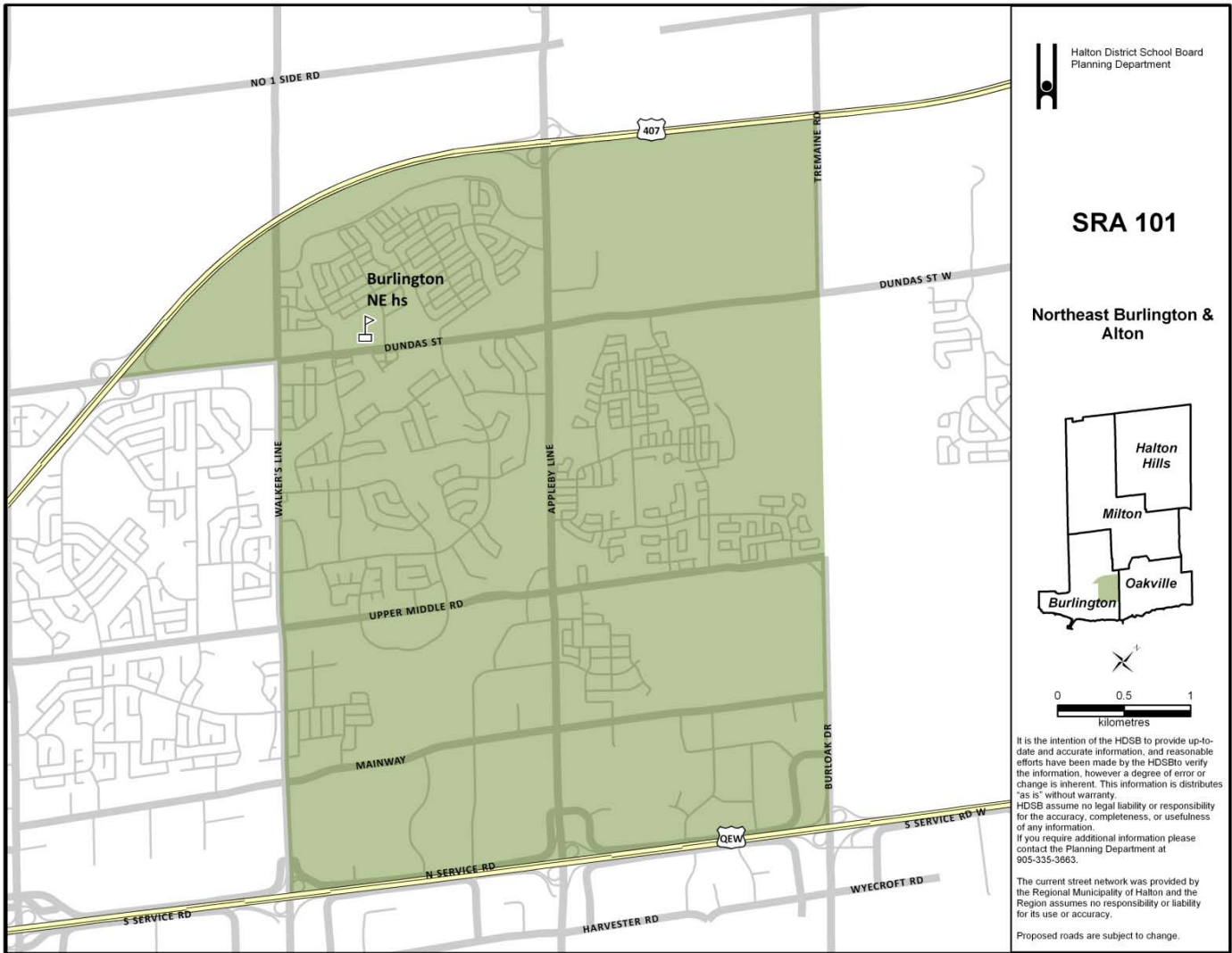
NOTE: SCHOOL ENROLMENT PROJECTIONS MAY INCLUDE STUDENTS OUTSIDE OF THE REVIEW AREA.

ENROLMENT PROJECTIONS ALSO INCLUDE THE FULL DAY KINDERGARTEN PROGRAM AS IMPLEMENTED BY MINISTRY TIMELINES WHICH HAS BEEN NOTED UNDER THE ERA SCHOOLS INFORMATION.

Projected Enrolment

		Acreage (ha)	School OTG	Port	Port Cap	Total Cap	Actual 2011	2012	2013	2014	2015	2016	2017	2018	2019	2020	2021
ALDERSHOT	ENG	6.46	651	0	0	651	429	450	451	450	435	419	422	393	405	390	356
	FI						74	79	81	84	87	85	90	83	82	87	87
	TOTAL						503	529	532	534	522	504	512	476	487	476	443
BURLINGTON CENTRAL	ENG	5.24	1,008	0	6	1,146	627	633	587	560	562	529	523	527	521	515	481
	FI						69	63	74	72	72	66	63	68	71	79	86
	TOTAL						696	696	661	632	634	595	586	595	591	594	568
LESTER B. PEARSON	ENG	5.71	639	12	2	685	643	598	545	537	541	528	541	530	519	499	510
	FI						74	74	79	86	91	97	96	95	93	90	90
	TOTAL						717	671	624	623	632	624	638	625	612	589	600
M.M. ROBINSON	ENG	13.62	1,347	3	12	1,623	944	843	804	789	762	762	754	704	703	653	682
	FI						139	137	134	129	136	147	150	177	189	184	194
	TOTAL						1,083	980	938	918	898	909	904	881	892	838	875
NELSON	ENG	6.98	1,341	0	0	1,341	1,264	1,245	1,218	1,210	1,157	1,130	1,141	1,106	1,090	1,072	1,028
	FI						202	193	234	241	281	337	379	450	500	523	529
	TOTAL						1,466	1,438	1,452	1,451	1,439	1,467	1,520	1,556	1,590	1,595	1,557
ROBERT BATEMAN	ENG	5.13	1,338	0	0	1,338	1,221	1,185	1,213	1,218	1,217	1,211	1,202	1,160	1,130	1,112	1,075
GRAND TOTAL		43.14	6,324	15	20	6,784	5,686	5,499	5,420	5,376	5,341	5,310	5,361	5,291	5,302	5,203	5,118
OTG in ERA overtime							6,324	6,324	6,324	6,324	6,324	6,324	6,324	6,324	6,324	6,324	6,324
Available Pupil Places (+/-)							638	825	904	948	983	1,015	963	1,033	1,022	1,121	1,206
Utilization Rate							90%	87%	86%	85%	84%	84%	85%	84%	84%	82%	81%

* NOTE: Burlington NE hs tentatively planned to open for September 2013



Halton District School Board
Planning Department

SRA 101

Northeast Burlington & Alton

It is the intention of the HDSB to provide up-to-date and accurate information, and reasonable efforts have been made by the HDSB to verify the information, however a degree of error or change is inherent. This information is distributed "as is" without warranty. HDSB assume no legal liability or responsibility for the accuracy, completeness, or usefulness of any information. If you require additional information please contact the Planning Department at 905-335-3663.

The current street network was provided by the Regional Municipality of Halton and the Region assumes no responsibility or liability for its use or accuracy.

Proposed roads are subject to change.

SRA 101 – Northeast Burlington

SRA Trend

- Burlington NE hs proposed to open in September 2013. The site is owned.
- Students attend Robert Bateman H.S., Nelson H.S., Lester B. Pearson H.S. and MM Robinson H. for the English program (9-12); and attend M.M. Robinson H.S. and Nelson H.S. (9-12) for French Immersion program.

Portable Requirements

- To be determined upon completion of the high school boundary review.

Housing Development

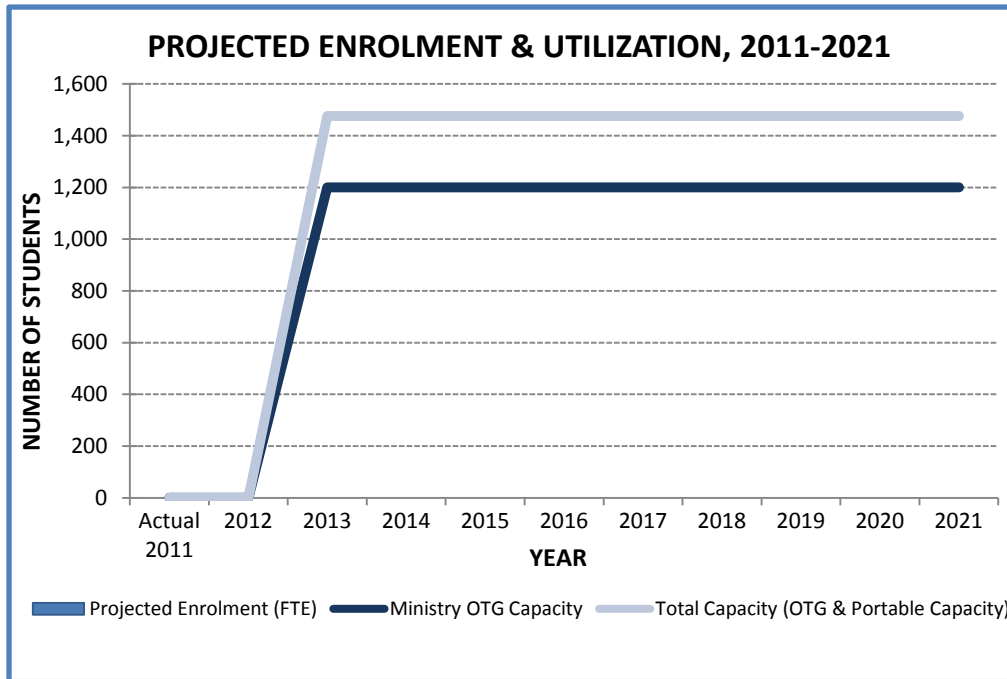
- Alton is a developing community with full build out by 2015.
- High density development is occurring south of Upper Middle Rd.

Overview

- Potential feeder schools Orchard Park P.S., Alexander's P.S. and Orchard #3 elementary schools enrolments demonstrate a preference to attend non HDSB secondary schools.
- Alton and Orchard are newer communities.
- Burlington NE hs boundary review was initiated in 2010.
- 941 students attend high school in this SRA:
 - 108 students attend Lester B. Pearson H.S. for the English program.
 - 98 students attend M. M. Robinson H.S. for the English program.
 - 330 students attend Nelson H.S. for the English program.
 - 276 students attend Robert Bateman H.S. English program.
 - 9 students attend M. M. Robinson H.S. for the French Immersion program.
 - 65 students attend Nelson H.S. for the French Immersion program.
 - 55 students attend out of catchment high schools.

Total Projected Enrolment & Capacity

	Actual 2011	2012	2013	2014	2015	2016	2017	2018	2019	2020	2021
Projected Enrolment (FTE)	0	0	0	0	0	0	0	0	0	0	0
Ministry OTG Capacity	0	0	1,200	1,200	1,200	1,200	1,200	1,200	1,200	1,200	1,200
Portables	0										
Portable Capacity	0	0	276	276	276	276	276	276	276	276	276
Total Capacity (OTG & Portable Capacity)	0	0	1,476	1,476	1,476	1,476	1,476	1,476	1,476	1,476	1,476



ERA Schools		
SCHOOL	ENG	FI
Burlington NE hs	9-12	

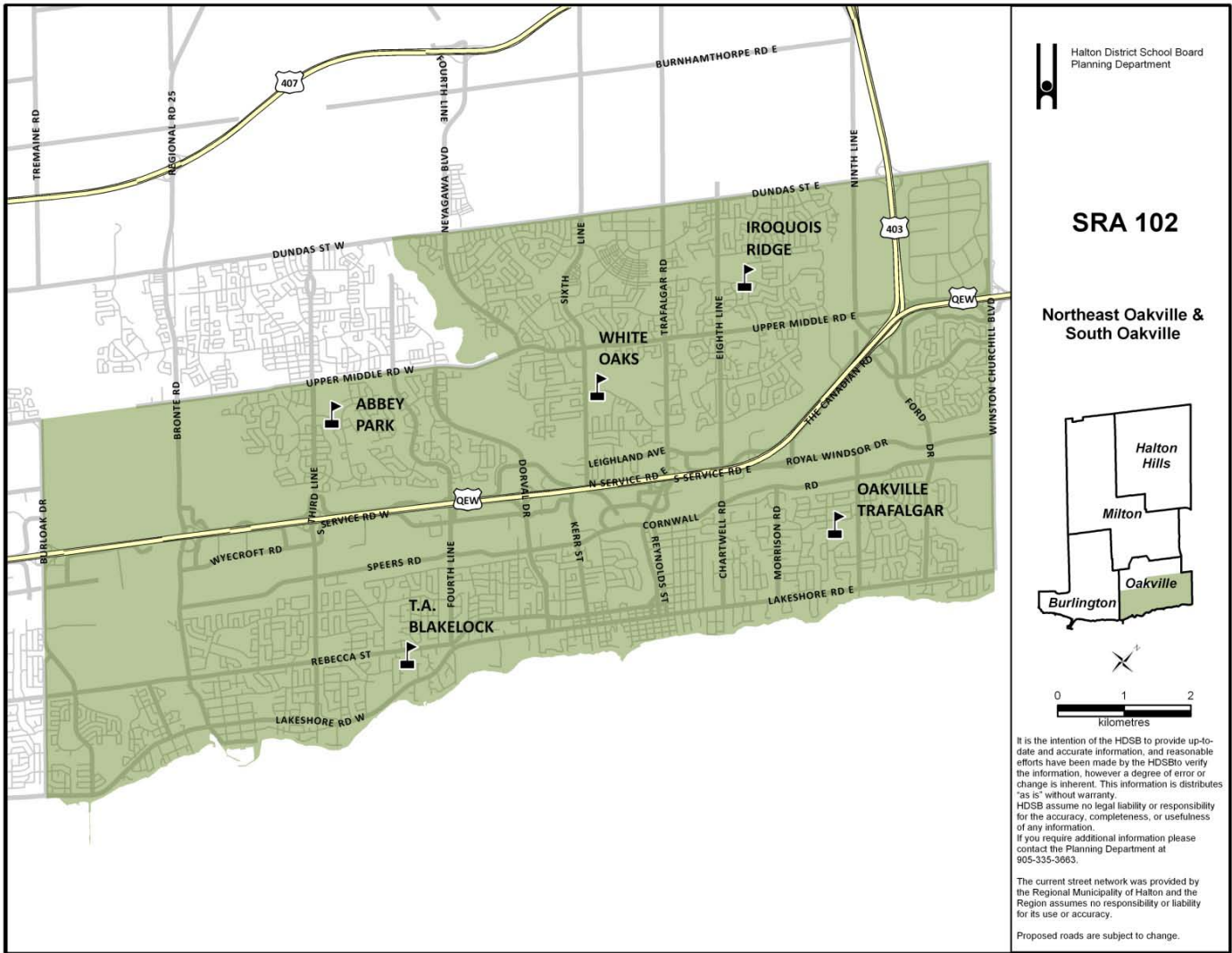
NOTE: SCHOOL ENROLMENT PROJECTIONS MAY INCLUDE STUDENTS OUTSIDE OF THE REVIEW AREA.

ENROLMENT PROJECTIONS ALSO INCLUDE THE FULL DAY KINDERGARTEN PROGRAM AS IMPLEMENTED BY MINISTRY TIMELINES WHICH HAS BEEN NOTED UNDER THE ERA SCHOOLS INFORMATION.

Projected Enrolment

	Acreage (ha)	School OTG	Port	Port Cap	Total Cap	Actual 2011	2012	2013	2014	2015	2016	2017	2018	2019	2020	2021
* Burlington NE hs	ENG 6.32	1,200	0	12	1,476											
GRAND TOTAL	6.32	1,200	0	12	1,476	0	0	0	0	0	0	0	0	0	0	0
OTG in ERA overtime								1,200	1,200	1,200	1,200	1,200	1,200	1,200	1,200	1,200
Available Pupil Places (+/-)								1,200	1,200	1,200	1,200	1,200	1,200	1,200	1,200	1,200
Utilization Rate								0%	0%	0%	0%	0%	0%	0%	0%	0%

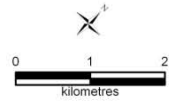
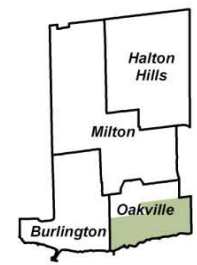
* NOTE: Burlington NE hs tentatively planned to open for September 2013



Halton District School Board
Planning Department

SRA 102

Northeast Oakville & South Oakville



It is the intention of the HDSB to provide up-to-date and accurate information, and reasonable efforts have been made by the HDSBs to verify the information, however a degree of error or change is inherent. This information is distributed "as is" without warranty. HDSB assume no legal liability or responsibility for the accuracy, completeness, or usefulness of any information. If you require additional information please contact the Planning Department at 905-335-3663.

The current street network was provided by the Regional Municipality of Halton and the Region assumes no responsibility or liability for its use or accuracy.

Proposed roads are subject to change.

SRA102 – Northeast Oakville, South Oakville

SRA Trend

- Overall enrolment is stable with OTG utilization above 100% from 2012 to 2021
- Wide range of communities – older, mature communities (south of QEW) and newer, growing communities (north of the QEW).

Portable Requirements

- Abbey Park - Twelve (12) portables on-site. Portables continue to be required 2012 to 2018.
- Iroquois Ridge - Four (4) portables on-site. Portables continue to be required 2012 to 2021.
- Oakville Trafalgar - Seven (7) portables on-site. Portables required 2012 to 2016.
- T.A. Blakelock - Zero portables on-site. Portables not required 2012 to 2021.
- White Oaks - Ten (10) portables on-site. Portables continue to be required 2012 to 2018.

Housing Development

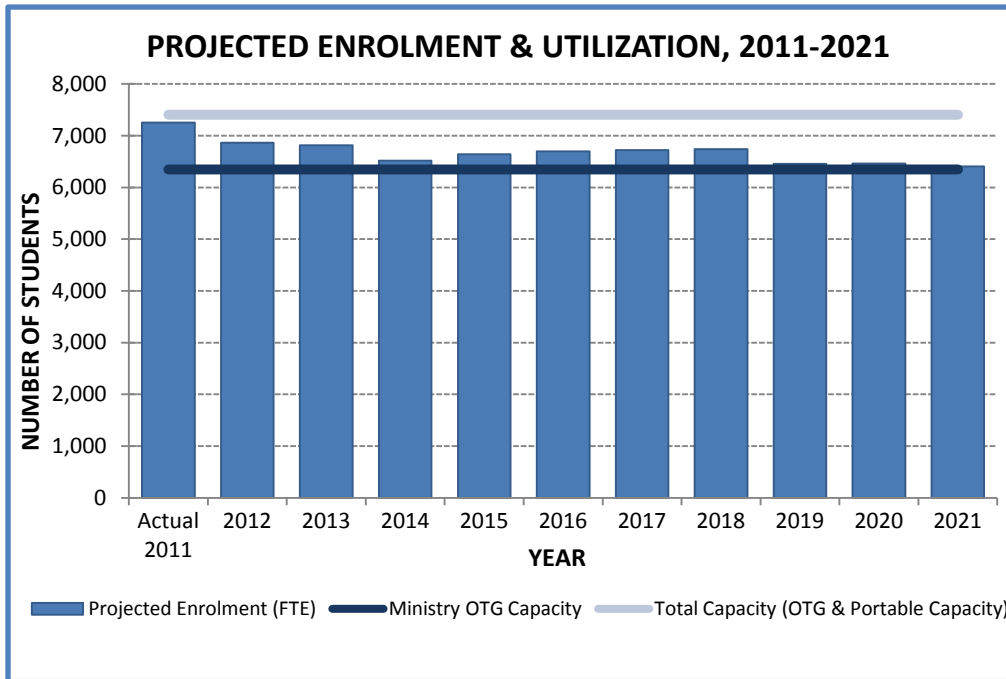
- Majority of new single family dwelling housing development and student population growth is north of the QEW.
- Infill, high-density development south of QEW (SW Oakville, downtown Oakville) with intensification studies (Bronte, Kerr Street, Midtown Oakville).
- High-density development north of the QEW (Uptown Core).

Overview

- Garth Webb SS (formerly known as SRA103 #1) is scheduled to open September 2012 as a grade 9 to 10 ENG school; new school opening will affect the enrolments of schools in SRA102, primarily Abbey Park and T.A. Blakelock.

Total Projected Enrolment & Capacity

	Actual 2011	2012	2013	2014	2015	2016	2017	2018	2019	2020	2021
Projected Enrolment (FTE)	7,252	6,864	6,812	6,520	6,644	6,698	6,720	6,742	6,456	6,463	6,405
Ministry OTG Capacity	6,348	6,348	6,348	6,348	6,348	6,348	6,348	6,348	6,348	6,348	6,348
Portables	39										
Portable Capacity	1,058	1,058	1,058	1,058	1,058	1,058	1,058	1,058	1,058	1,058	1,058
Total Capacity (OTG & Portable Capacity)	7,406	7,406	7,406	7,406	7,406	7,406	7,406	7,406	7,406	7,406	7,406



ERA Schools		
SCHOOL	ENG	FI
ABBEY PARK	9-12	
IROQUOIS RIDGE	9-12	9-12
OAKVILLE TRAFALGAR	9-12	9-12
THOMAS A. BLAKELOCK	9-12	9-12
WHITE OAKS SECONDARY	9-12	9-12

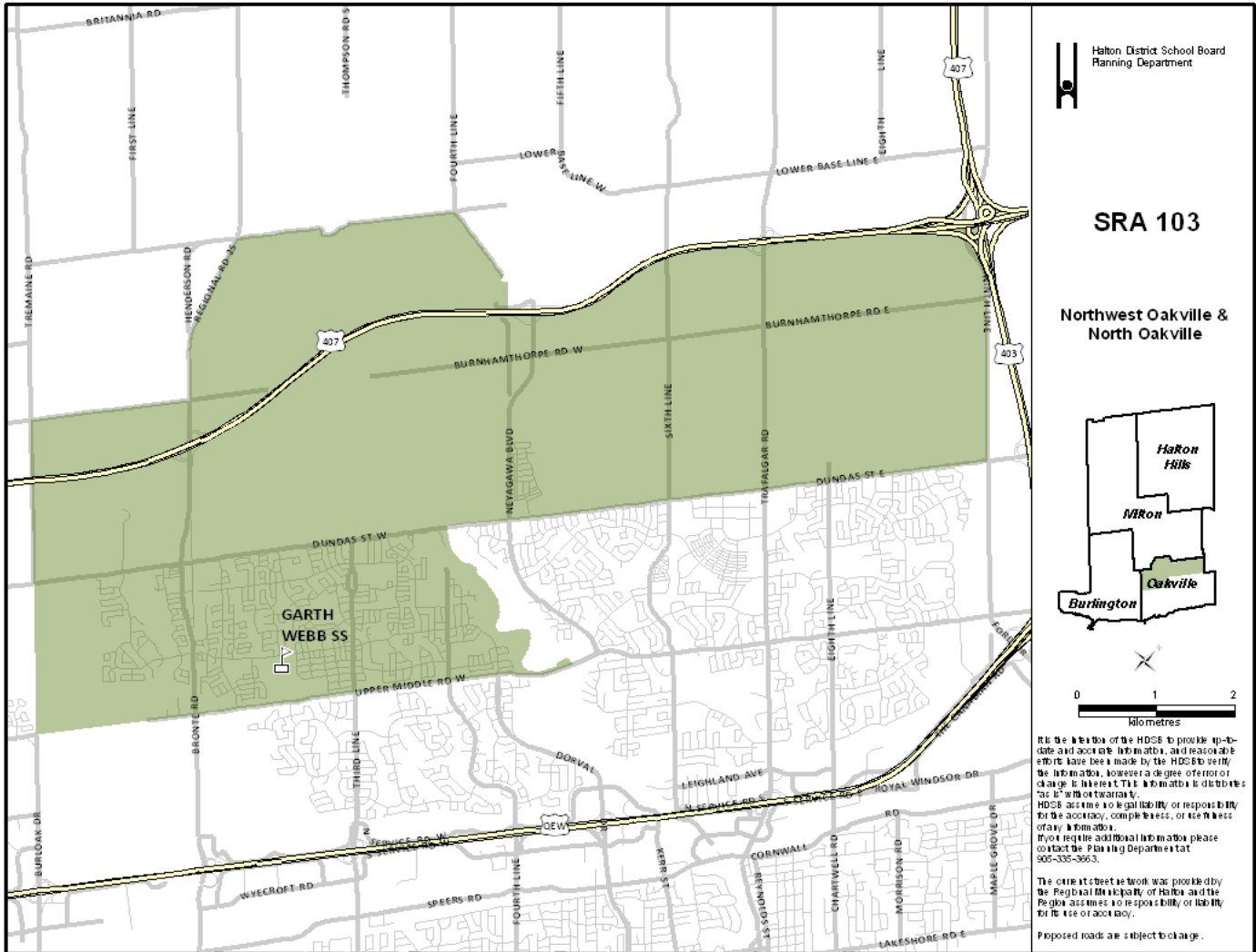
NOTE: SCHOOL ENROLMENT PROJECTIONS MAY INCLUDE STUDENTS OUTSIDE OF THE REVIEW AREA.

ENROLMENT PROJECTIONS ALSO INCLUDE THE FULL DAY KINDERGARTEN PROGRAM AS IMPLEMENTED BY MINISTRY TIMELINES WHICH HAS BEEN NOTED UNDER THE ERA SCHOOLS INFORMATION.

Projected Enrolment

		Acreage (ha)	School OTG	Port	Port Cap	Total Cap	Actual 2011	2012	2013	2014	2015	2016	2017	2018	2019	2020	2021
ABBEY PARK	ENG	5.62	924	12	12	1200	1241	1165	1128	1094	1041	1040	1028	940.9	914.8	899.7	866
	FI						120	119	154	178	206	222	240	238	242	257	246
	TOTAL						1,313	1,253	1,271	1,283	1,346	1,406	1,451	1,448	1,356	1,332	1,259
OAKVILLE TRAFALGAR	ENG	5.67	1,158	7	0	1,158	1,127	1,137	1,120	1,068	1,072	998	903	847	678	622	609
	FI						193	197	209	212	207	208	208	233	236	250	275
	TOTAL						1,320	1,334	1,329	1,280	1,278	1,207	1,111	1,079	914	871	884
THOMAS A. BLAKELOCK	ENG	5.26	1,344	0	4	1,436	828	774	746	724	737	718	696	709	674	689	683
	FI						300	322	361	388	414	414	429	461	467	479	477
	TOTAL						1,128	1,096	1,107	1,112	1,151	1,132	1,125	1,170	1,141	1,167	1,160
WHITE OAKS SECONDARY	ENG	4.13	1,704	16	24	2,256	2,044	1,777	1,716	1,492	1,534	1,595	1,670	1,733	1,744	1,781	1,808
	FI						206	241	262	260	293	318	337	370	387	412	429
	TOTAL						2,250	2,017	1,978	1,751	1,827	1,913	2,006	2,104	2,130	2,192	2,237
GRAND TOTAL		24.68	6,348	39	46	7,406	7,252	6,864	6,812	6,520	6,644	6,698	6,720	6,742	6,456	6,463	6,405
OTG in ERA overtime							6,348	6,348	6,348	6,348	6,348	6,348	6,348	6,348	6,348	6,348	6,348
Available Pupil Places (+/-)							-904	-516	-464	-172	-296	-350	-372	-394	-108	-115	-57
Utilization Rate							114%	108%	107%	103%	105%	106%	106%	106%	102%	102%	101%

* NOTE: Garth Webb SS opens for September 2012



SRA103 – Northwest Oakville, North Oakville

SRA Trend

- New development in North Oakville (north of Dundas) and remaining areas in the West Oak Trails and Palermo areas south of Dundas.

Portable Requirements

- Garth Webb SS - Zero portables on-site. Portables not required 2012 to 2017; portables will be required after 2017.
- Initial long range projection show portables not required until 2018 but requirements are expected to change as historical information is collected and projections are revised.

Housing Development

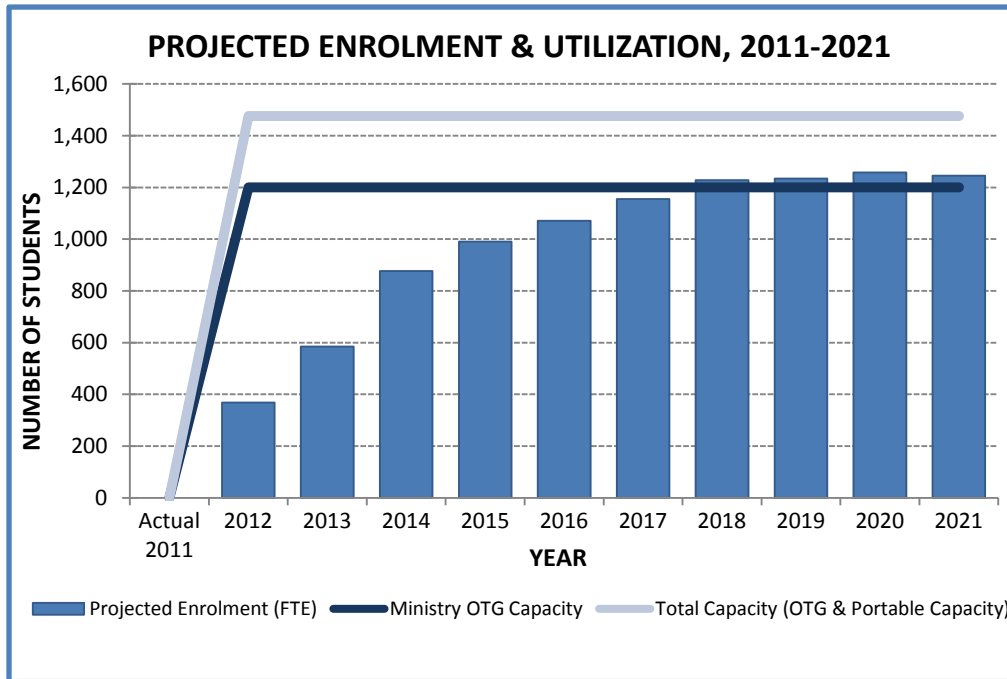
- New development and growth occurring in Bronte Woods, North Oakville, Palermo, and West Oak Trails.
- There are approximately 12,000 residential units in this review area in the applications already receive by the Town of Oakville.
- Phasing and construction timing is expected to change over the next five years.

Overview

- It is expected that long range projections will show exponential growth in North Oakville (north of Dundas) in the elementary panel and will affect the secondary panel a little farther into the future (beyond the scope of this LTAP update).
- Study for Garth Webb SS (formerly known as SRA103 #1) was conducted Winter 2010 and Spring 2011 → Programming and boundaries established and will be implemented September 2012 when the school opens.
- Garth Webb will have an FI program and is expected to be implemented with the first Palermo grade 8 FI graduating class in September 2015.
- Status of SRA103 #2 is unknown at this point in time.
- Students north of Dundas are currently being held at White Oaks S.S. (SRA102) for the English and French Immersion programs.

Total Projected Enrolment & Capacity

	Actual 2011	2012	2013	2014	2015	2016	2017	2018	2019	2020	2021
Projected Enrolment (FTE)	0	368	585	876	991	1,071	1,155	1,228	1,235	1,258	1,246
Ministry OTG Capacity	0	1,200	1,200	1,200	1,200	1,200	1,200	1,200	1,200	1,200	1,200
Portables	0										
Portable Capacity	0	276	276	276	276	276	276	276	276	276	276
Total Capacity (OTG & Portable Capacity)	0	1,476	1,476	1,476	1,476	1,476	1,476	1,476	1,476	1,476	1,476



ERA Schools		
SCHOOL	ENG	FI
GARTH WEBB SS	9-12	9-12

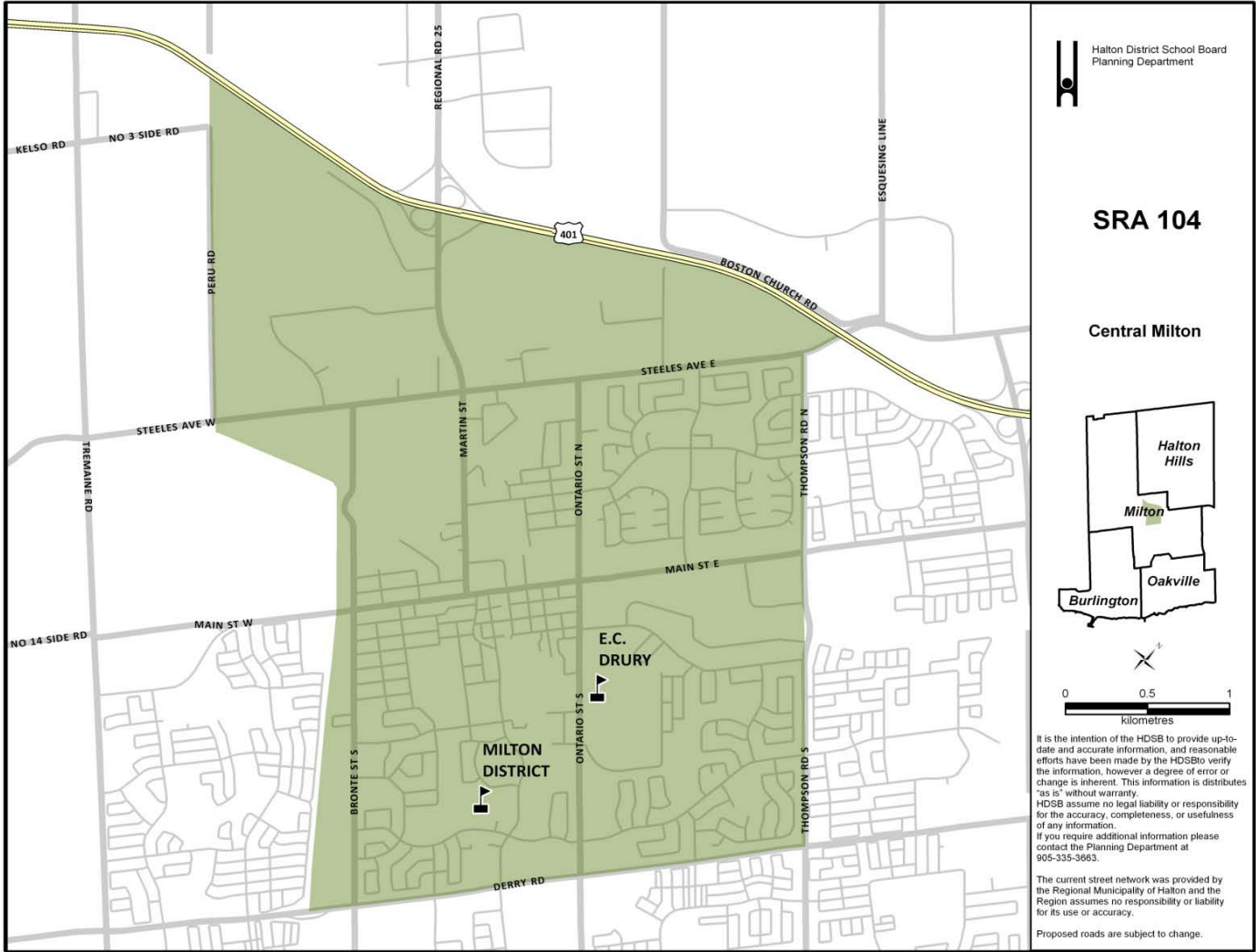
NOTE: SCHOOL ENROLMENT PROJECTIONS MAY INCLUDE STUDENTS OUTSIDE OF THE REVIEW AREA.

ENROLMENT PROJECTIONS ALSO INCLUDE THE FULL DAY KINDERGARTEN PROGRAM AS IMPLEMENTED BY MINISTRY TIMELINES WHICH HAS BEEN NOTED UNDER THE ERA SCHOOLS INFORMATION.

Projected Enrolment

		Acreage (ha)	School OTG	Port	Port Cap	Total Cap	Actual 2011	2012	2013	2014	2015	2016	2017	2018	2019	2020	2021
* GARTH WEBB SS	ENG	5.61	1,200	0	12	1,476		368	585	876	952	998	1,025	1,036	1,005	975	934
	FI							0	0	0	39	73	131	192	230	283	312
	TOTAL							368	585	876	991	1,071	1,155	1,228	1,235	1,258	1,246
GRAND TOTAL		5.61	1,200	0	12	1,476		368	585	876	991	1,071	1,155	1,228	1,235	1,258	1,246
OTG in ERA overtime								1,200	1,200	1,200	1,200	1,200	1,200	1,200	1,200	1,200	1,200
Available Pupil Places (+/-)								832	616	324	210	129	45	-28	-35	-58	-46
Utilization Rate								31%	49%	73%	83%	89%	96%	102%	103%	105%	104%

* NOTE: Garth Webb SS opens for September 2012



SRA 104 – Central Milton

SRA Trend

- School enrolments will continue to grow, above total capacity.

Portable Requirements

- *EC Drury* - four (4) portables are on site
- *Milton District* - eight (8) portables are on site. Portables will be needed.

Housing Development

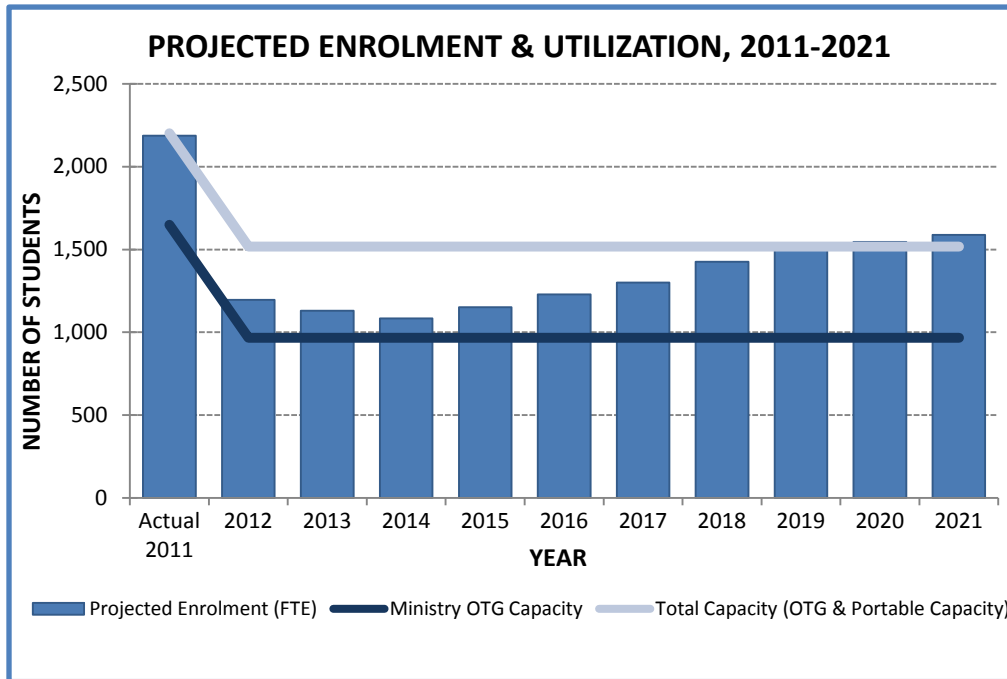
- Very little development is occurring within this SRA.
- Housing developments from SRA 105 contributed to the projected increase in enrolment (Sherwood and Bristol Survey).

Overview

- If current trends continue, Milton District H.S. French Immersion is expected to grow from the increase preference for FI at P.L. Robertson.
- Approximately 40% grade 8 students at W. I. Dick P.S. (FI), and at Sam Sherratt P.S. have elected to attend Milton District P.S.
- Approximately 60% of English students at W.I. Dick P.S. have elected to attend Milton District P.S.
- E.C. Drury H.S. is a leased facility from the Province of Ontario
- Craig Kielburger S.S. is planned to open 2012, this will relieve enrolment pressures in this SRA. E.C. Drury students will be transferred to this new school in SRA 105.

Total Projected Enrolment & Capacity

	Actual 2011	2012	2013	2014	2015	2016	2017	2018	2019	2020	2021
Projected Enrolment (FTE)	2,187	1,197	1,130	1,084	1,152	1,229	1,300	1,427	1,497	1,546	1,589
Ministry OTG Capacity	1,650	966	966	966	966	966	966	966	966	966	966
Portables	11										
Portable Capacity	552	552	552	552	552	552	552	552	552	552	552
Total Capacity (OTG & Portable Capacity)	2,202	1,518	1,518	1,518	1,518	1,518	1,518	1,518	1,518	1,518	1,518



ERA Schools		
SCHOOL	ENG	FI
E.C. DRURY	9-12	9-12
MILTON DISTRICT	9-12	9-12

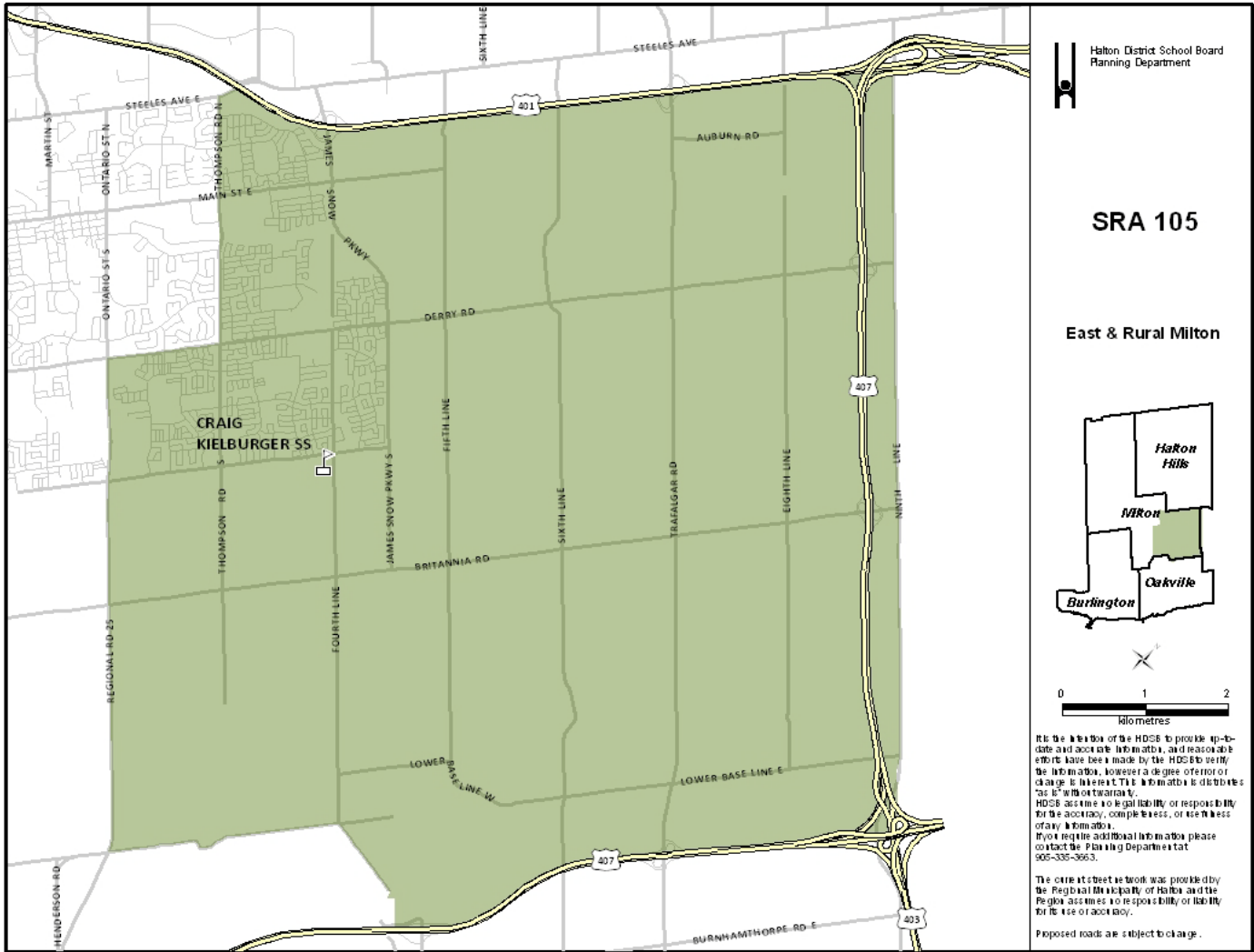
NOTE: SCHOOL ENROLMENT PROJECTIONS MAY INCLUDE STUDENTS OUTSIDE OF THE REVIEW AREA.

ENROLMENT PROJECTIONS ALSO INCLUDE THE FULL DAY KINDERGARTEN PROGRAM AS IMPLEMENTED BY MINISTRY TIMELINES WHICH HAS BEEN NOTED UNDER THE ERA SCHOOLS INFORMATION.

Projected Enrolment

		Acreage (ha)	School OTG	Port	Port Cap	Total Cap	Actual 2011	2012	2013	2014	2015	2016	2017	2018	2019	2020	2021
E.C. DRURY	ENG	N/A	684	4	12	960	897										
	FI						76										
	TOTAL						973										
MILTON DISTRICT	ENG	6.87	966	7	12	1,242	1,114	1,085	995	931	971	1,010	1,030	1,069	1,028	996	963
	FI						100	112	134	152	181	220	270	357	469	550	626
	TOTAL						1,214	1,197	1,130	1,084	1,152	1,229	1,300	1,427	1,497	1,546	1,589
GRAND TOTAL		6.87	1,650	11	24	2,202	2,187	1,197	1,130	1,084	1,152	1,229	1,300	1,427	1,497	1,546	1,589
OTG in ERA overtime							1,650	966	966	966	966	966	966	966	966	966	966
Available Pupil Places (+/-)							-537	-231	-164	-118	-186	-263	-334	-461	-531	-580	-623
Utilization Rate							133%	124%	117%	112%	119%	127%	135%	148%	155%	160%	164%

* NOTE: Craig Kielburger SS opens for September 2012



SRA 105 – Rural Milton West

SRA Trend

- Combination of rural and new communities.
- Students attend Milton District H.S. and E.C. Drury H.S. for English and French Immersion programs.

Portable Requirements

- Portables may be required in 2014.

Housing Development

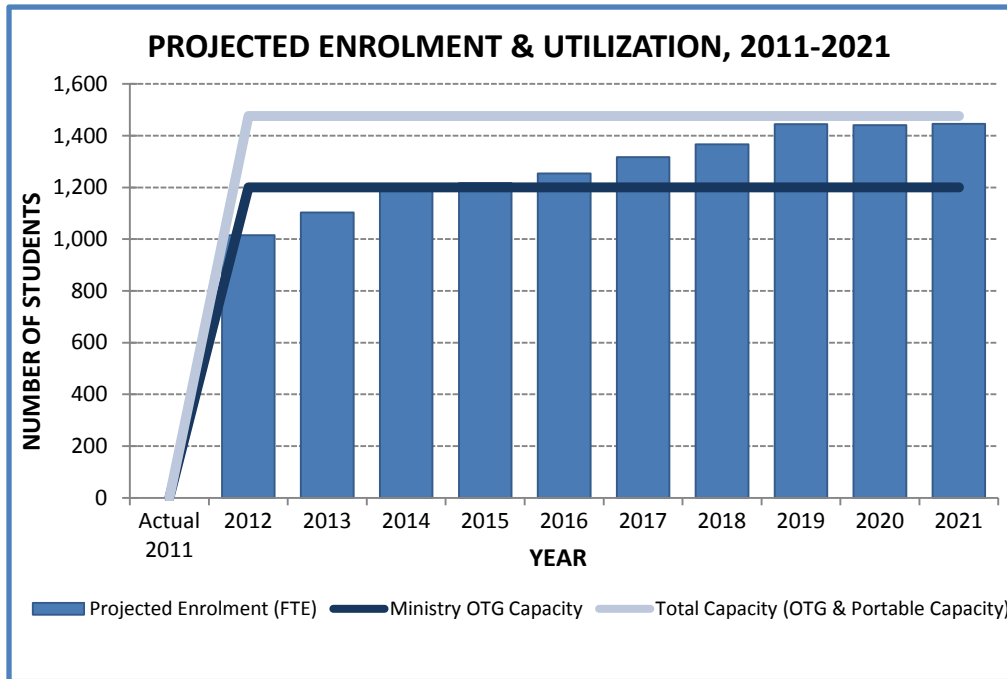
- Several subdivisions are in different stages of planning and construction in SRA 105. It is expected these developments will contribute to enrolment growth.
- The Boyne Survey (south of Louis St. Laurent) is the third of three planned residential areas of growth.
- The Secondary Plan is currently before the Town for approval, no enrolments generated from this area until subdivision plans are submitted within the next 4 years.

Overview

- Craig Kielburger H.S. is planned to open 2012. The boundary study was completed in December 2010, students are currently held in SRA 104 schools.
- Both English & FI programs at Craig Kielburger H.S. is expected to grow.
- More than 35% of grade 8 students at Bruce Trail P.S. and 60% of grade 8s at Chris Hadfield P.S. have elected to leave the Halton District School Board for grade 9.
- White Oaks H.S. IB program attracts about 15% of grade 8 from the Bruce Trail P.S., Hawthorne Village P.S., Tiger Jeet Singh P.S., and 8% from Chris Hadfield P.S.
- 978 students attend high school in this SRA:
 - 477 students attend E.C. Drury H.S. for the English and SPED programs.
 - 346 students attend Milton District H.S. for the English program.
 - 76 students attend White Oaks for the English program,
 - 26 students attend E.C. Drury H.S. for the French Immersion program.
 - 32 students attend Milton District for the French Immersion program.
 - 21 students attend out of catchment high schools.

Total Projected Enrolment & Capacity

	Actual 2011	2012	2013	2014	2015	2016	2017	2018	2019	2020	2021
Projected Enrolment (FTE)	0	1,016	1,103	1,207	1,217	1,254	1,317	1,366	1,444	1,442	1,446
Ministry OTG Capacity	0	1,200	1,200	1,200	1,200	1,200	1,200	1,200	1,200	1,200	1,200
Portables	0										
Portable Capacity	0	276	276	276	276	276	276	276	276	276	276
Total Capacity (OTG & Portable Capacity)	0	1,476	1,476	1,476	1,476	1,476	1,476	1,476	1,476	1,476	1,476



ERA Schools		
SCHOOL	ENG	FI
CRAIG KIELBURGER SS	9-12	9-12

NOTE: SCHOOL ENROLMENT PROJECTIONS MAY INCLUDE STUDENTS OUTSIDE OF THE REVIEW AREA.

ENROLMENT PROJECTIONS ALSO INCLUDE THE FULL DAY KINDERGARTEN PROGRAM AS IMPLEMENTED BY MINISTRY TIMELINES WHICH HAS BEEN NOTED UNDER THE ERA SCHOOLS INFORMATION.

Projected Enrolment

		Acreage (ha)	School OTG	Port	Port Cap	Total Cap	Actual 2011	2012	2013	2014	2015	2016	2017	2018	2019	2020	2021
* CRAIG KIELBURGER SS	ENG	6.47	1,200	0	12	1,476		928	998	1,093	1,092	1,117	1,169	1,204	1,259	1,247	1,244
	FI							87	105	114	124	137	148	162	186	195	202
	TOTAL							1,016	1,103	1,207	1,217	1,254	1,317	1,366	1,444	1,442	1,446
GRAND TOTAL		6.47	1,200	0	12	1,476		1,016	1,103	1,207	1,217	1,254	1,317	1,366	1,444	1,442	1,446
OTG in ERA overtime								1,200	1,200	1,200	1,200	1,200	1,200	1,200	1,200	1,200	1,200
Available Pupil Places (+/-)								184	97	-7	-17	-54	-117	-166	-244	-242	-246
Utilization Rate								85%	92%	101%	101%	104%	110%	114%	120%	120%	120%

* NOTE: Craig Kielburger SS opens for September 2012



SRA 106 - Rural Milton East

SRA Trend

- There are no schools in this review area.
- Students attend Acton District H.S., Milton District H.S. and White Oaks H.S. for English and French Immersion programs.

Portable Requirements

- Not applicable

Housing Development

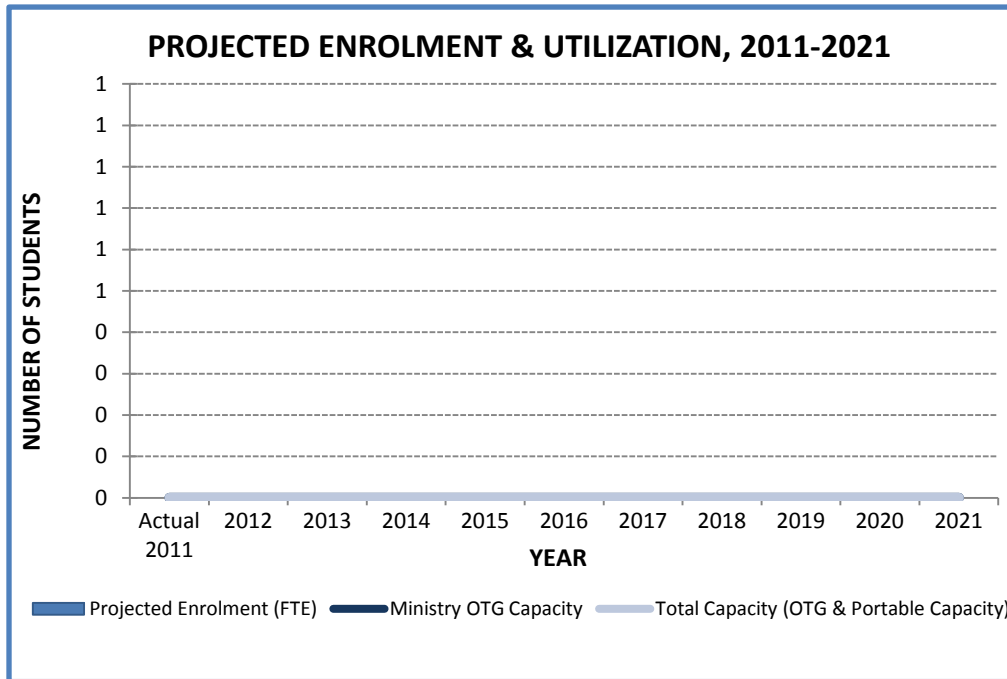
- Significant housing development is not expected, with the exception of some rural estate homes.

Overview

- There are 664 high school students that reside in this SRA:
 - 62 students attend Acton District H.S. for the English program.
 - 449 students attend Milton District H.S. for the English program.
 - 44 students attend White Oaks H.S. for the English program. (Some students in the English program are on optional attendance at White Oaks)
 - 49 students attend E.C. Drury H.S. for the English and SPED programs.
 - 4 students attend Acton District H.S. for the French Immersion program.
 - 30 students attend Milton District H.S. for the French Immersion program.
 - 1 student attends White Oaks H.S. for the French Immersion program.
 - 25 students attend out of catchment high schools.

Total Projected Enrolment & Capacity

	Actual 2011	2012	2013	2014	2015	2016	2017	2018	2019	2020	2021
Projected Enrolment (FTE)	0	0	0	0	0	0	0	0	0	0	0
Ministry OTG Capacity	0	0	0	0	0	0	0	0	0	0	0
Portables	0										
Portable Capacity	0	0	0	0	0	0	0	0	0	0	0
Total Capacity (OTG & Portable Capacity)	0	0	0	0	0	0	0	0	0	0	0



ERA Schools		
SCHOOL	ENG	FI
Milton SE hs	9-12	9-12

NOTE: SCHOOL ENROLMENT PROJECTIONS MAY INCLUDE STUDENTS OUTSIDE OF THE REVIEW AREA.

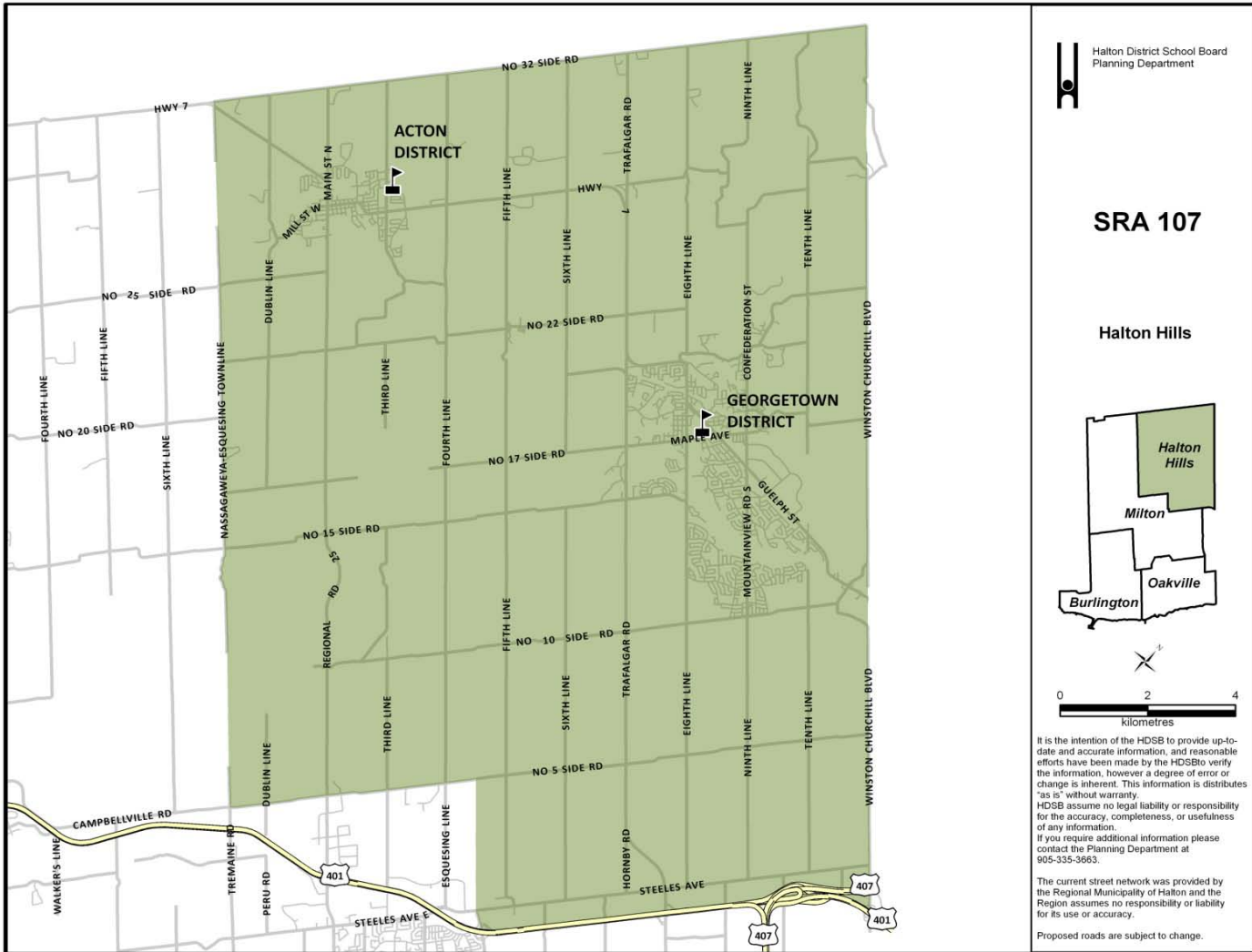
ENROLMENT PROJECTIONS ALSO INCLUDE THE FULL DAY KINDERGARTEN PROGRAM AS IMPLEMENTED BY MINISTRY TIMELINES WHICH HAS BEEN NOTED UNDER THE ERA SCHOOLS INFORMATION.

Projected Enrolment

	Acreage (ha)	School OTG	Port	Port Cap	Total Cap	Actual 2011	2012	2013	2014	2015	2016	2017	2018	2019	2020	2021
--	-----------------	---------------	------	-------------	--------------	----------------	------	------	------	------	------	------	------	------	------	------

THERE ARE NO SCHOOLS IN THIS REVIEW AREA, STUDENTS HAVE BEEN COUNTED IN OTHER REVIEW AREAS

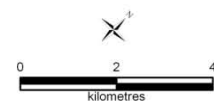
GRAND TOTAL	0.00	0	0	0	0	0	0	0	0	0	0	0	0	0	0	0
OTG in ERA overtime						0	0	0	0	0	0	0	0	0	0	0
Available Pupil Places (+/-)						0	0	0	0	0	0	0	0	0	0	0
Utilization Rate						0%	0%	0%	0%	0%	0%	0%	0%	0%	0%	0%



Halton District School Board
Planning Department

SRA 107

Halton Hills



It is the intention of the HDSB to provide up-to-date and accurate information, and reasonable efforts have been made by the HDSB to verify the information, however a degree of error or change is inherent. This information is distributed "as is" without warranty. HDSB assume no legal liability or responsibility for the accuracy, completeness, or usefulness of any information. If you require additional information please contact the Planning Department at 905-335-3663.

The current street network was provided by the Regional Municipality of Halton and the Region assumes no responsibility or liability for its use or accuracy.

Proposed roads are subject to change.

SRA107 – Halton Hills

ERA Trend

- Overall enrolment is stable with OTG utilization above 100% from 2012 to 2017; OTG utilization declines to under 100% in 2018.

Portable Requirements

- Acton District - Zero portables on-site. Portables not required 2012 to 2021.
- Georgetown District - Zero portables on-site.

Housing Development

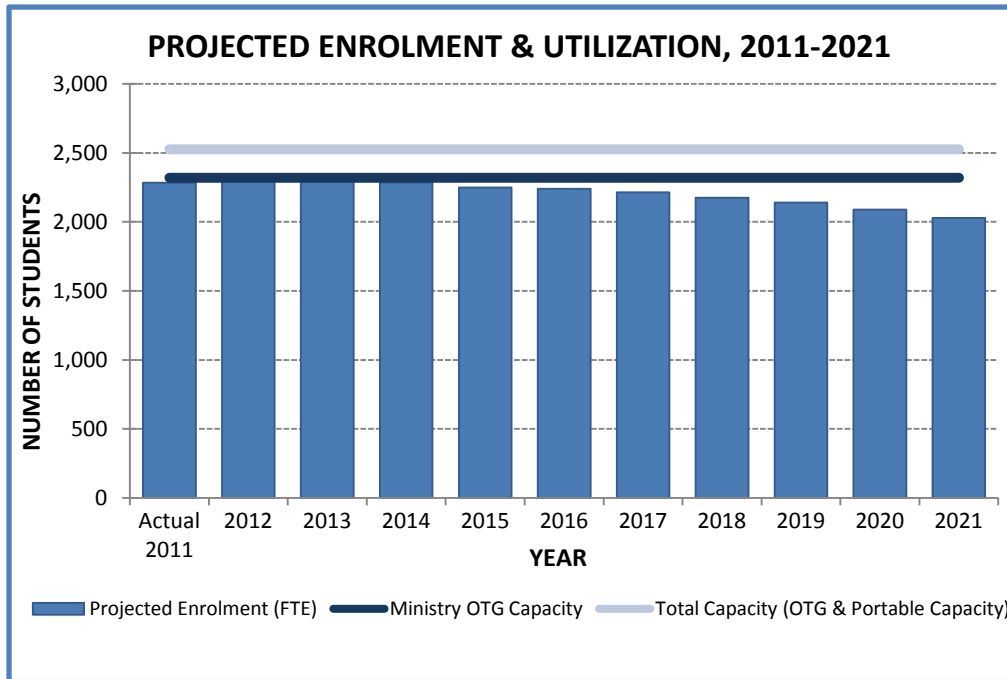
- Servicing issues exist for Halton Hills where new development is restricted until the issues can be resolved.
- Keys areas of new growth are South Georgetown, Glen Williams
- Infill development in downtown Georgetown.

Overview

- Acton has no new housing development or applications.
- Georgetown has new growth areas in South Georgetown and will continue to see growth once servicing issues are resolved, building permits are issued, and new applications are submitted.
- Proposal to expand the Georgetown Urban Boundary; enrolment impacts and potential new school sites of the proposed urban expansion may be seen beyond the scope of this LTAP update.
- Accommodation issues at Georgetown District H.S. currently being addressed with class scheduling modifications.

Total Projected Enrolment & Capacity

	Actual 2011	2012	2013	2014	2015	2016	2017	2018	2019	2020	2021
Projected Enrolment (FTE)	2,284	2,346	2,323	2,287	2,250	2,240	2,215	2,175	2,139	2,089	2,030
Ministry OTG Capacity	2,319	2,319	2,319	2,319	2,319	2,319	2,319	2,319	2,319	2,319	2,319
Portables	0										
Portable Capacity	207	207	207	207	207	207	207	207	207	207	207
Total Capacity (OTG & Portable Capacity)	2,526	2,526	2,526	2,526	2,526	2,526	2,526	2,526	2,526	2,526	2,526



ERA Schools		
SCHOOL	ENG	FI
ACTON DISTRICT	9-12	9-12
GEORGETOWN DISTRICT	9-12	9-12

NOTE: SCHOOL ENROLMENT PROJECTIONS MAY INCLUDE STUDENTS OUTSIDE OF THE REVIEW AREA.

ENROLMENT PROJECTIONS ALSO INCLUDE THE FULL DAY KINDERGARTEN PROGRAM AS IMPLEMENTED BY MINISTRY TIMELINES WHICH HAS BEEN NOTED UNDER THE ERA SCHOOLS INFORMATION.

Projected Enrolment

		Acreage (ha)	School OTG	Port	Port Cap	Total Cap	Actual 2011	2012	2013	2014	2015	2016	2017	2018	2019	2020	2021
ACTON DISTRICT	ENG	10.22	636	0	9	843	462	454	444	447	428	439	441	435	425	418	396
	FI						57	63	68	65	68	71	76	73	76	73	70
	TOTAL						519	517	512	512	496	509	517	508	500	491	466
GRAND TOTAL		10.22	636	0	9	843	519	517	512	512	496	509	517	508	500	491	466
OTG in ERA overtime							636	636	636	636	636	636	636	636	636	636	636
Available Pupil Places (+/-)							117	119	124	124	140	127	119	128	136	145	170
Utilization Rate							82%	81%	81%	80%	78%	80%	81%	80%	79%	77%	73%

Projected Enrolment

		Acreage (ha)	School OTG	Port	Port Cap	Total Cap	Actual 2011	2012	2013	2014	2015	2016	2017	2018	2019	2020	2021
GEORGETOWN DISTRICT	ENG	5.20	1,683	0	0	1,683	1,632	1,704	1,677	1,622	1,598	1,565	1,515	1,478	1,438	1,401	1,367
	FI						133	125	134	154	156	165	182	188	201	197	197
	TOTAL						1,765	1,830	1,810	1,776	1,753	1,730	1,697	1,667	1,639	1,598	1,564
GRAND TOTAL		5.20	1,683	0	0	1,683	1,765	1,830	1,810	1,776	1,753	1,730	1,697	1,667	1,639	1,598	1,564
OTG in ERA overtime							1,683	1,683	1,683	1,683	1,683	1,683	1,683	1,683	1,683	1,683	1,683
Available Pupil Places (+/-)							-82	-147	-127	-93	-70	-47	-14	17	44	85	119
Utilization Rate							105%	109%	108%	106%	104%	103%	101%	99%	97%	95%	93%