

Halton District School Board

Glenview-Maplehurst Boundary Review Committee

Monday, January 9, 2023, 7:00-9:00 pm

Boundary Review Committee:

Tim Rye, Christine Sawchuk, Elma Forto, Kendra Murphy

Staff Present:

Michelle D'Aguiar, Mitchell Gundy, Frederick Thibeault, Jacqueline Newton, Donna Danielli, Nick Frankovich, Andrew Capern

Regrets:

Matthew Diodati

Meeting Notes:

Meeting Start at 7:05 pm

10 online observers and 2 in person.

- Superintendent Newton welcomes the BRC and gives a general overview of the purpose of the meeting.
 - Noting that all the documents that were provided to the BRC will be posted online as well as in a folder for the BRC.
- Superintendent Newton reads through the agenda for tonight's meeting.

Part 1

- Introductions
 - The BRSC introduced themselves.
 - The BRC introduce themselves.
 - Superintendent Newton thanks the BRC for their time.
- School Boundary Review
 - General Manager Thibeault speaks to the resolution that was passed
 - "BE IT RESOLVED THAT, the Halton District School Board direct staff to complete a boundary review for ERA 100 (Aldershot) with the objective of addressing accommodation pressures;"
- Boundary review process

- The purpose of the Steering Committee is gone over regarding the choice of different pathways and to eventually bring forward a recommendation to the Director.
- Timeline
 - Currently at the 1st BRC meeting. (in person)
 - The other meetings will be held virtually until the last meeting on February 13.
- Communications.
 - [Website](#) - There is a dedicated website that will host the materials that was provided to the BRC at the meeting.
 - Email - for any questions please contact us through our mapleglenreview@hdsb.ca

Part 2

- How to read
 - General Manager Thibeault teaches the BRC on how to read the option sheets and maps.
- Functional Building Capacity
 - The BRC is introduced to the concept of Building Capacity vs Functional Capacity.
 - The difference between the two could be several classrooms.
- Developing options
 - Criteria
 - Viability of Programs
 - Stable Long Term Boundaries
 - Portable and Portapaks
 - Fiscal Responsibility
 - Proximity to schools
 - Balance of Enrolments
 - Transportation
 - Student Experience
 - These are the criteria that the BRC will use when evaluating the options.
 - No option will meet all criteria perfectly but the job of the BRC will be to maximize each criteria as much as possible and weigh how important some are vs others.
 - Study Area
 - The program and grades that this review is focused on is the English catchment for grades JK-6 between Glenview PS and Maplehurst PS.
 - The BRC is shown the areas of development that are of concern in the later years in the projections.
- Current boundaries
 - East West approach to the boundary.
 - Glenview is West plus North.
 - Transportation

- Plains Road is a boundary
 - The transportation distance of 1.6 km is based on a road network from the Transportation Department, not as the crow flies.
- There are currently 5 portables at Glenview PS, with more than 6 needed in the future.
- Maplehurst is underutilized and has space to accommodate.
- The BRC takes a short break at 7:54 pm
- The BRC return at 8:05 pm
- Option 1
 - North and South divide.
 - Vast majority of new development goes to Maplehurst PS.
 - Transported boundaries
 - Not much changes.
 - Immediate portables needed at Maplehurst PS.
 - Shifting the issue from one school to another.
- Option 2
 - Hybrid
 - Maintain Glenview PS walkability.
 - Walkability area remains the same.
 - Enrolment
 - 5-6 years is good at Glenview PS
 - By 2029 the enrollment will spike and would need to be addressed either by a capital submission or another review.
- Option 3
 - Hybrid of option 1.
 - Vast majority of growth goes to Maplehurst PS.
 - Glenview PS will have some portables for the time being.
 - Maplehurst will see growth into the future, giving time to plan for accommodation.

Part 3

- Engagement
 - The BRC goes through the Menti and Jaboard.
 - Option 2 and 3 are preferred
 - Walking distance and enrolment balance.
 - The BRC decided that Option 1 will be removed going forward.
 - 2 new options will be created from the BRC meeting.

Question to bring back for the next meeting:

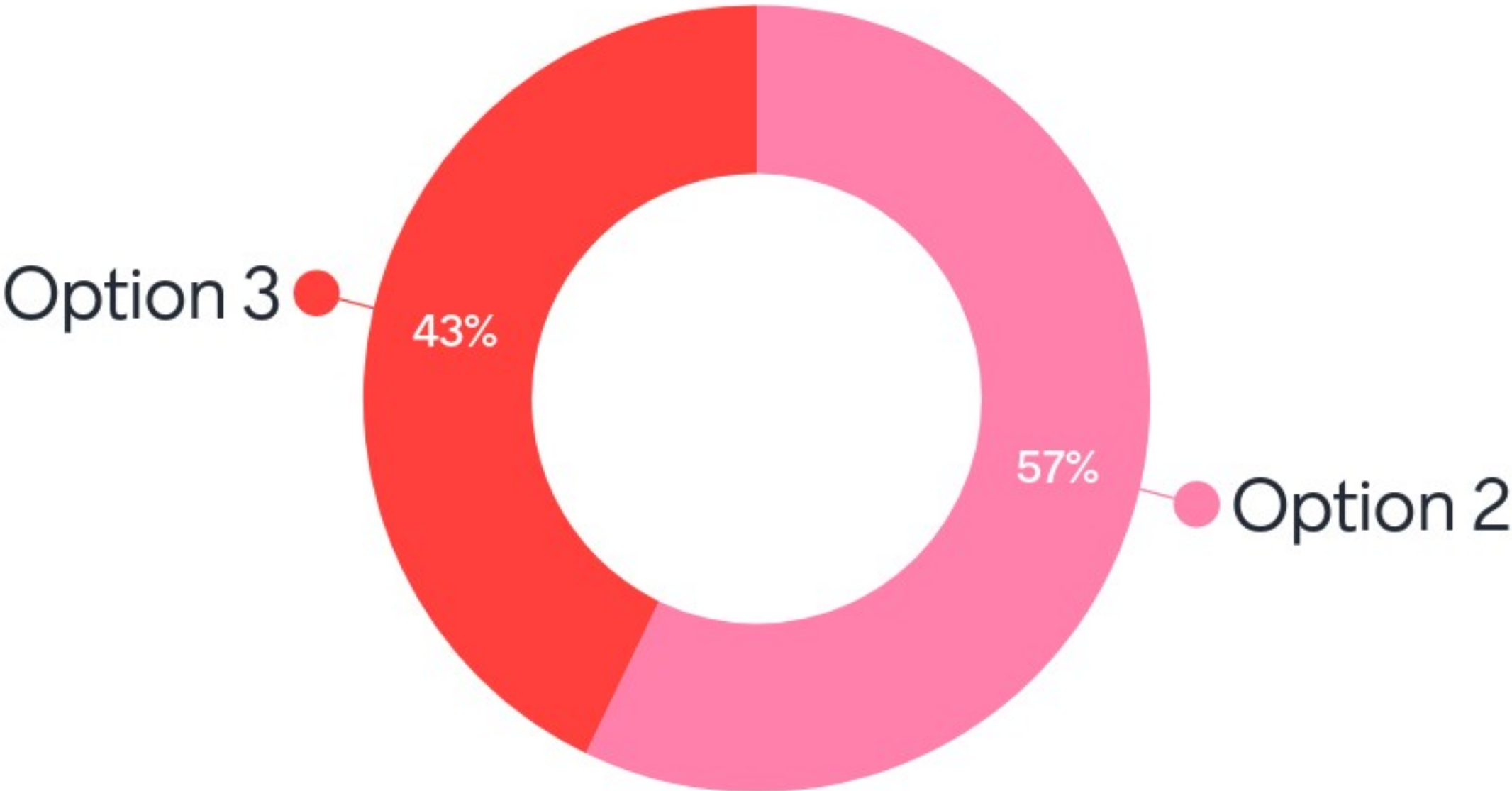
- How will before and after care be impacted if the communities are moved to a different school where there are limited spots available?
- Progressions rule for Kings Road.

Questions:

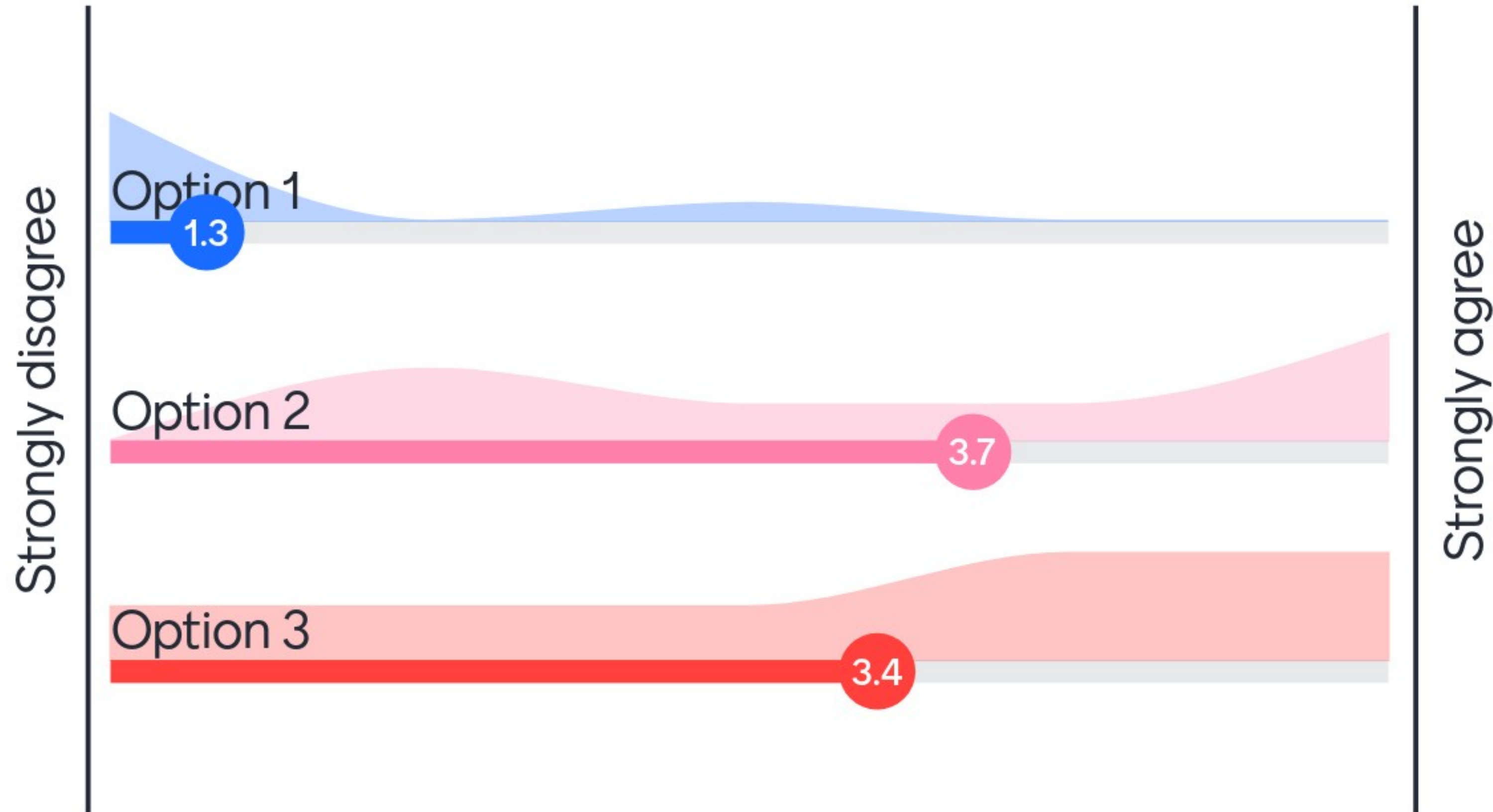
- Why was King's Road PS not included?
 - The school was not included due to its sustainable enrolment and geography.
- If the FI entry is earlier maybe the students would stay at the school.
 - The number may not be significant and is not possible for the FI program to start at an earlier grade at this time.
- What are the actual bussing number or bussing utilization
 - This can be provided
- Will Glenview PS ever see an addition?
 - There may be a better business case to sent the the ministry
 - In option 2 two schools are well utilized while one will need intervention based on what the ministry says.

Jan 17, 2023 is the next meeting and it will be virtual

Which option do you prefer?



What Options do you feel have Promise?



What are Criteria we should consider?

Balance

Long term solution

Disruption to students - mental health

LT solution

Socio economic balance

Walkability.

Class size distribution

Limit portable usage

Experience of staff and students -
load balancing long term balance
portable use

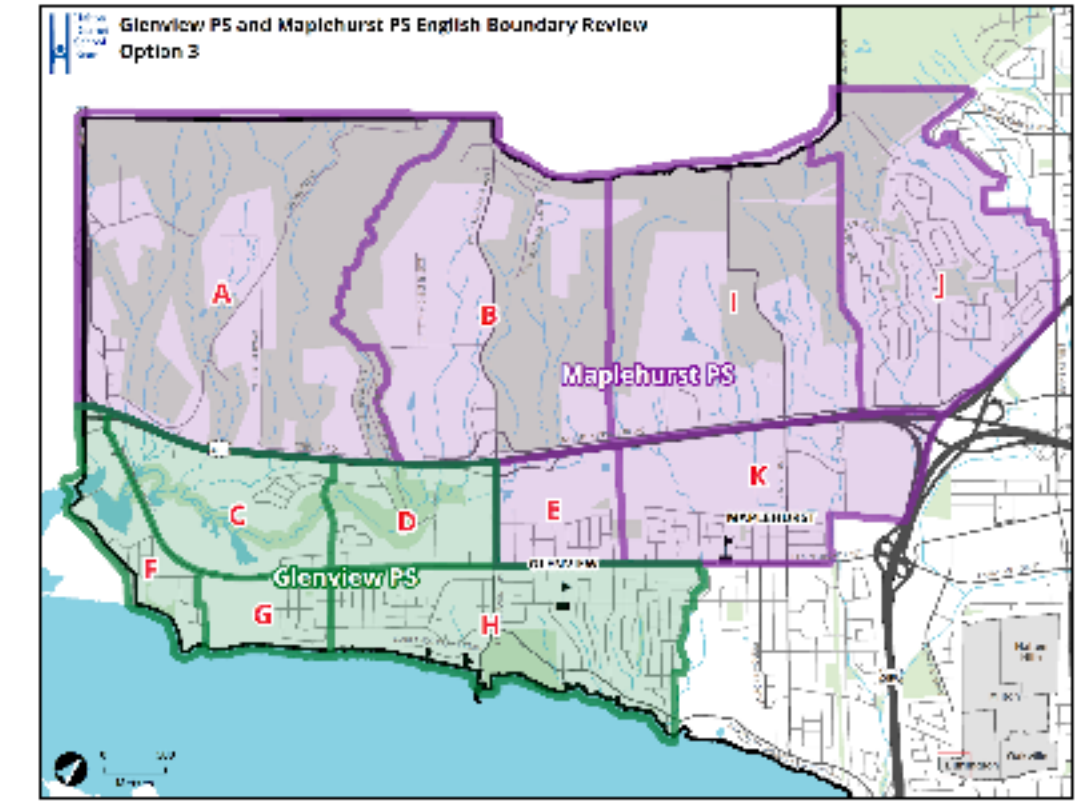
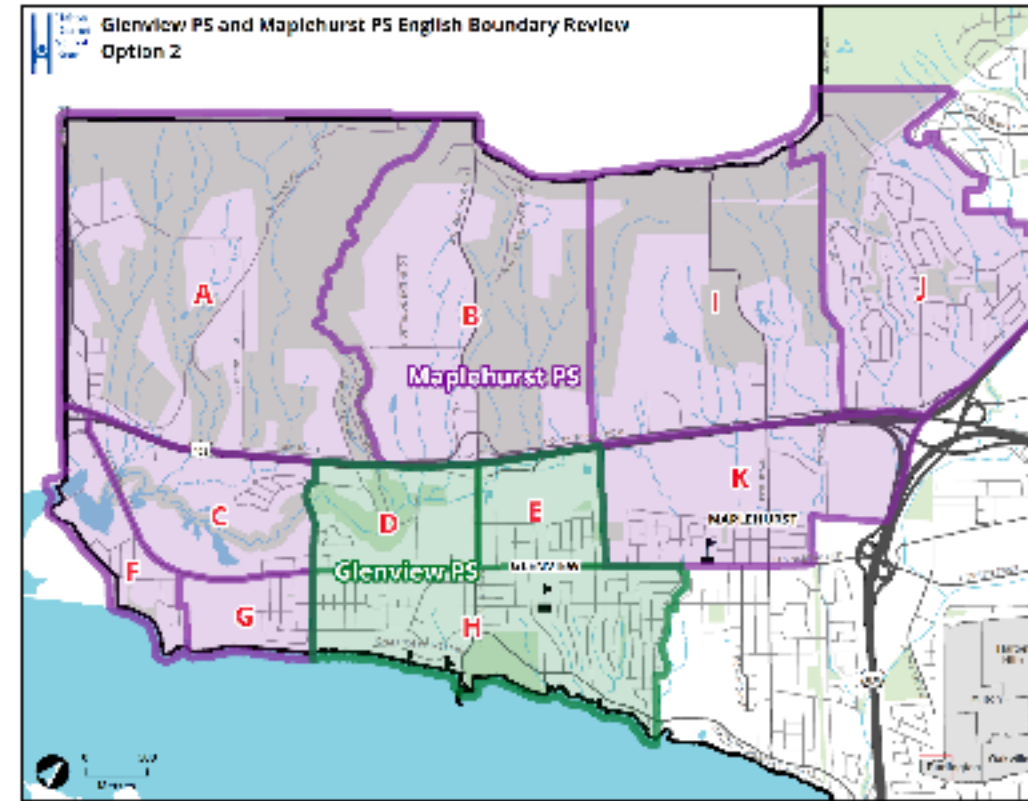
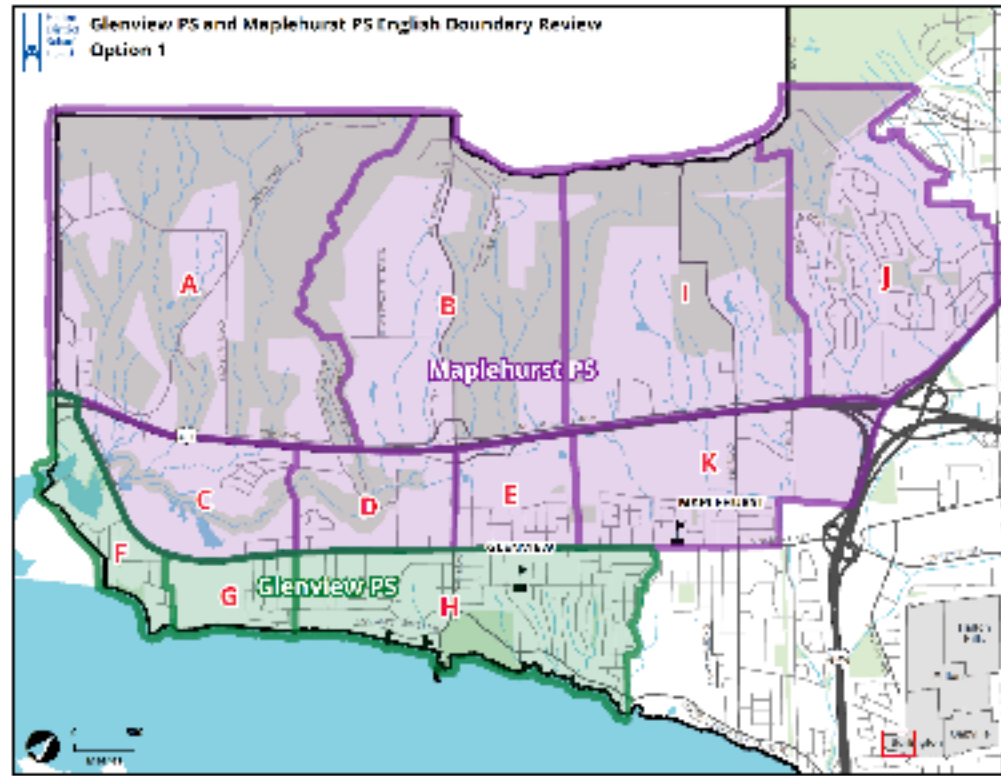
What are Criteria we should consider?

Walking distance

Ensure not pushing issue to
Maplehurst

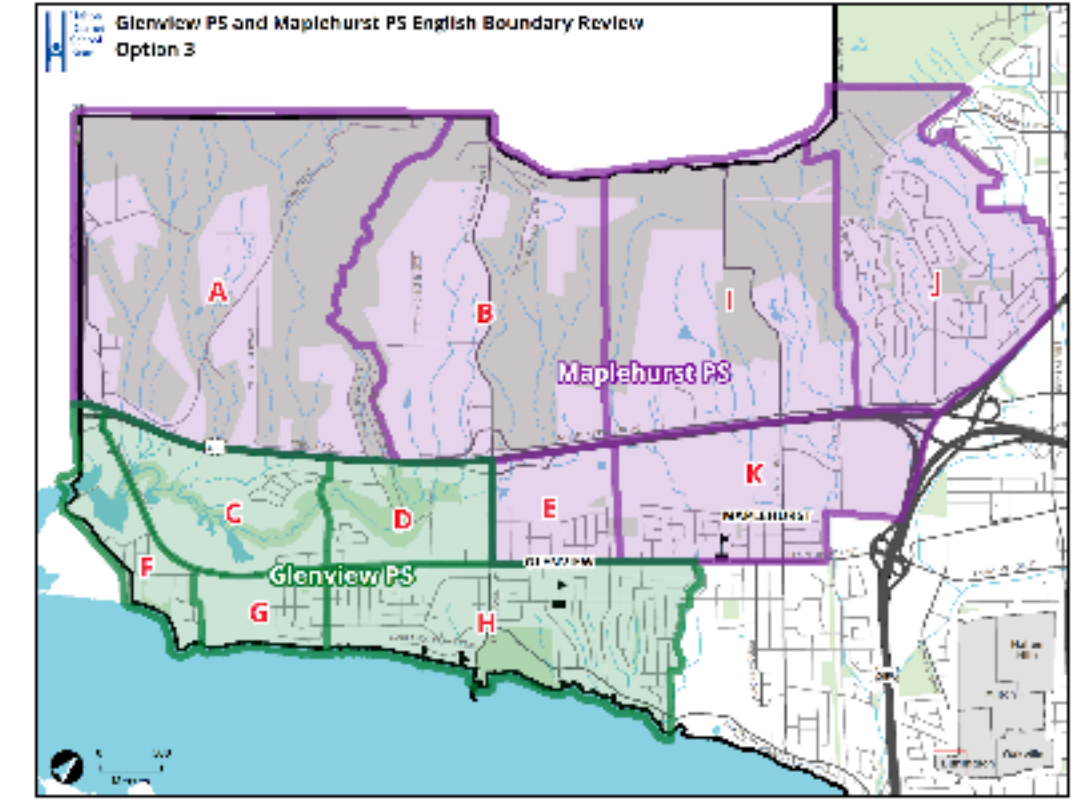
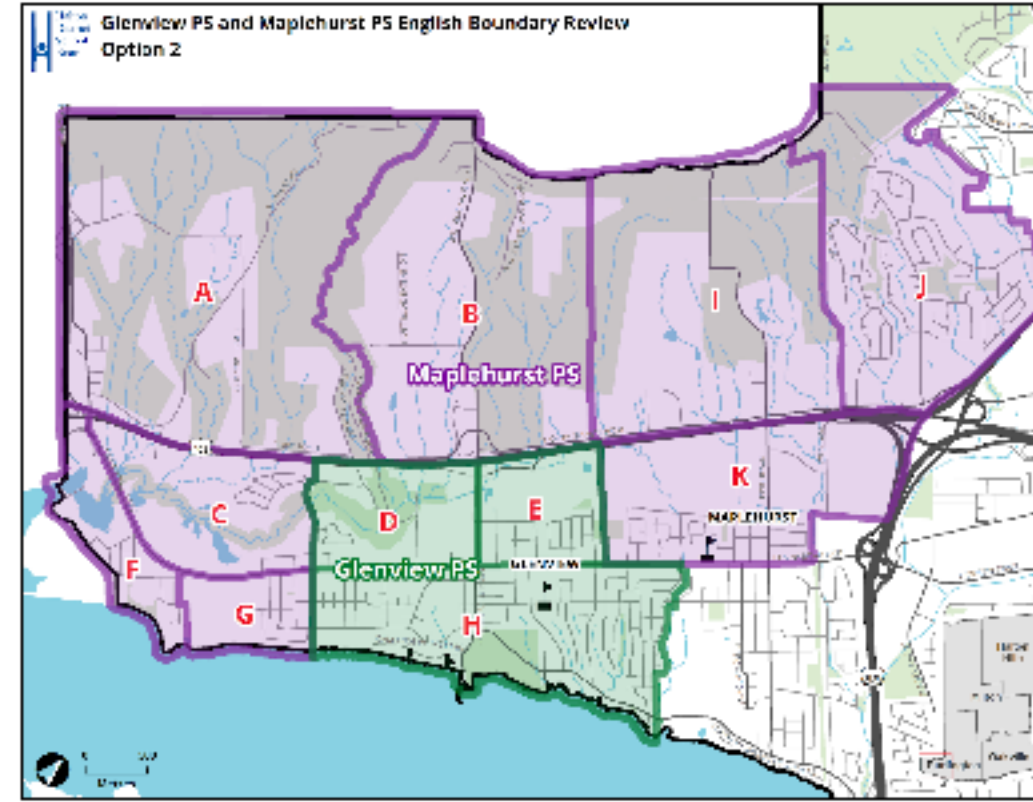
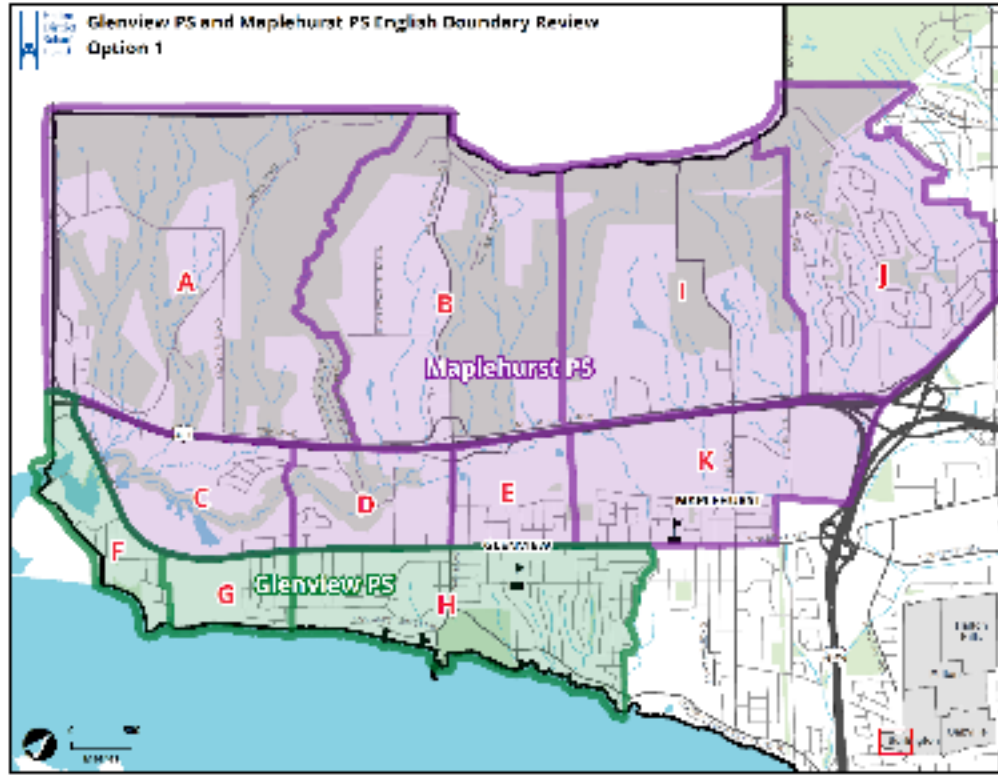
French immersion /English stream
division and class size impacts
(avoiding split grade classes)

Q4: Any improvements that should be explored in the Options presented?



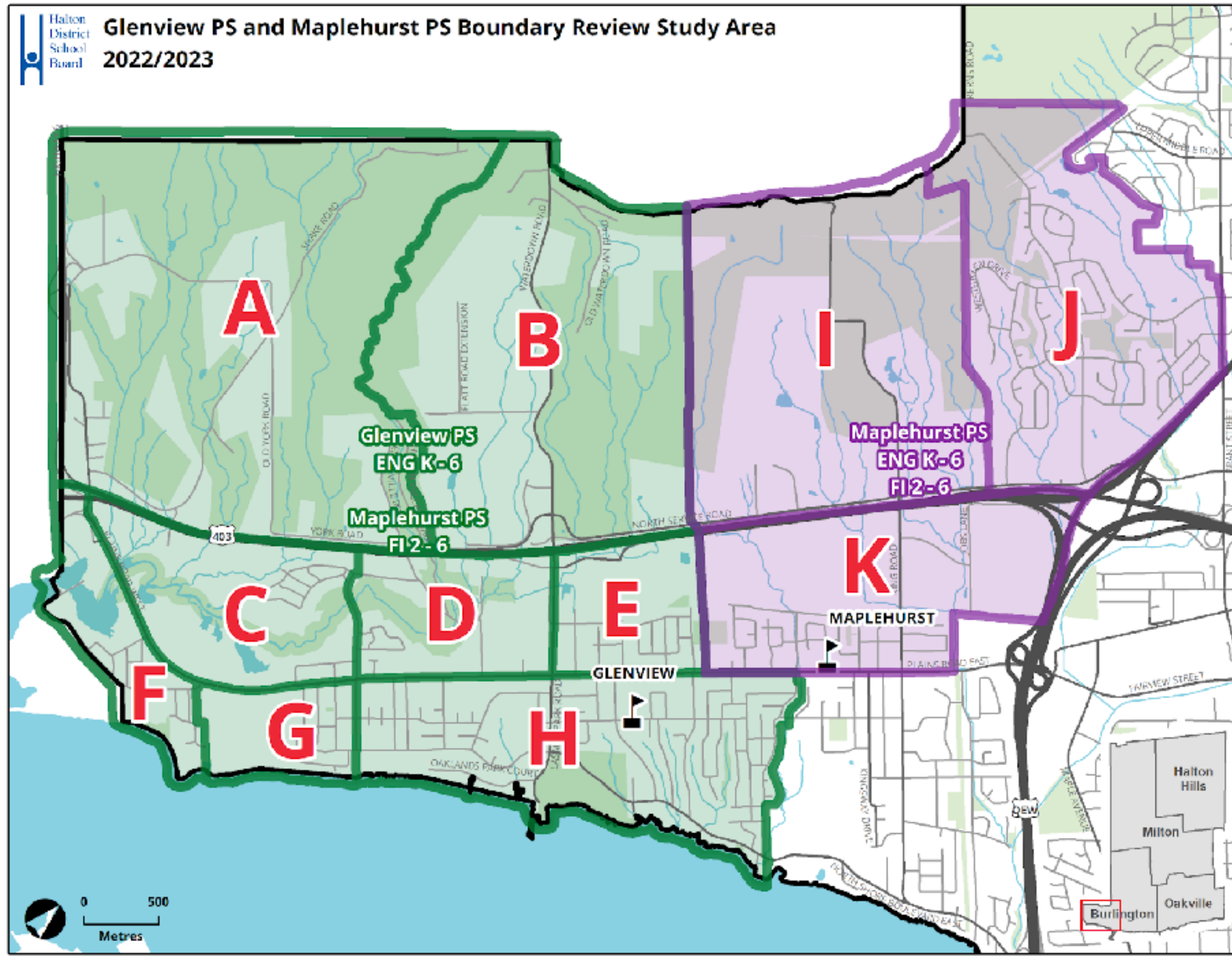
**Option 3 -
Move Zones A
& B to
Glenview**

Q5: What Options should be removed, and Why?



Remove
Option 1 -
doesn't
accomplish
the purpose of
the review

Q6: Are there other Options that should be explored?



Option 2b -
Move Zone D
to Maplehurst

3b - Zones
A & B to
Glenview
PS