



Halton
District
School
Board

Tiger Jeet Singh PS Secondary School Boundary Alignment

BRSC Meeting
April 7, 2025, 6pm





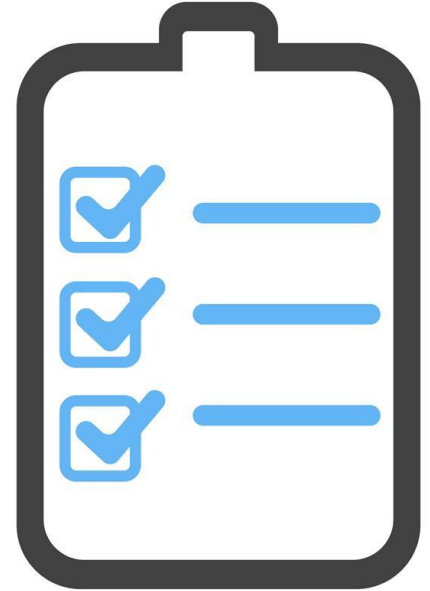
Honouring the Land and Territory

We begin by acknowledging the land and our responsibility to care for and respect all that provides us with life. This land upon which HDSB is situated is on the ancestral, treaty and title lands of the Anishinaabek Ojibwe Michizaagiig Nation, now known as the Mississaugas of the Credit. Michizaagiig territory in the past and present continues to host both Indigenous and non-Indigenous peoples.

The HDSB is committed to continuous knowledge building with respect to actions that address and resolve the ongoing impacts of colonialism. We do this by learning and understanding the true history, treaty obligations, duties and responsibilities and Indigenous Rights while actively maintaining mutually beneficial relationships and collectively respecting and caring for the land.

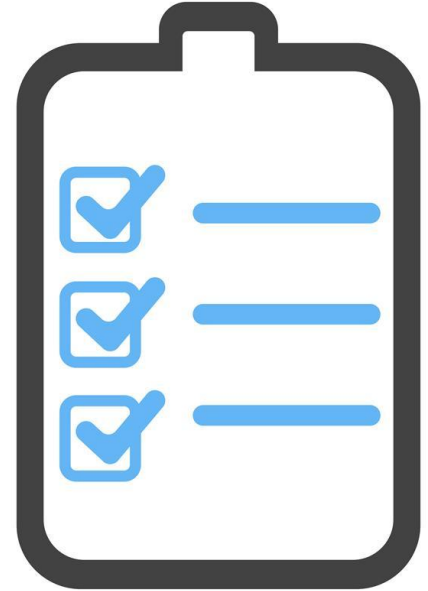
Agenda

1. Objectives & Introduction of Boundary Review Steering Committee (BRSC)
2. Tiger Jeet Singh PS Secondary School Boundary Alignment
3. Administration Policy Review
4. Communication Plan
5. "How to Read" Overview
6. BRSC Mandate Decisions
7. Questions & Feedback



Objectives for today's meeting

1. Determine boundary review Pathway (1 or 2)
2. Determine schools involved (*Which school communities should participate? Who is impacted?*)
3. Determine scope of study (*Which programs to consider? What are the objectives? What do we want to see at the conclusion of the study?*)
4. Review Option
5. If applicable recommend **status quo** or **option 1** to the Director of Education.



Introduction of Boundary Review Steering Committee (BRSC) members

Out of Area Trustee,
(Appointed by Chair of the Board and Director)

Donna Danielli (Co-Chair)

Family of Schools Superintendent

Dean Barnes (Co-Chair)

Trustees of affected areas

Naveed Ahmed

Family of Schools Superintendent(s) of all affected areas

Jennifer Fowler

Planning Department

Frederick Thibeault, Michelle
D'Aguiar, Mitchell Gundy

Halton Student Transportation Services

Romer Abalos

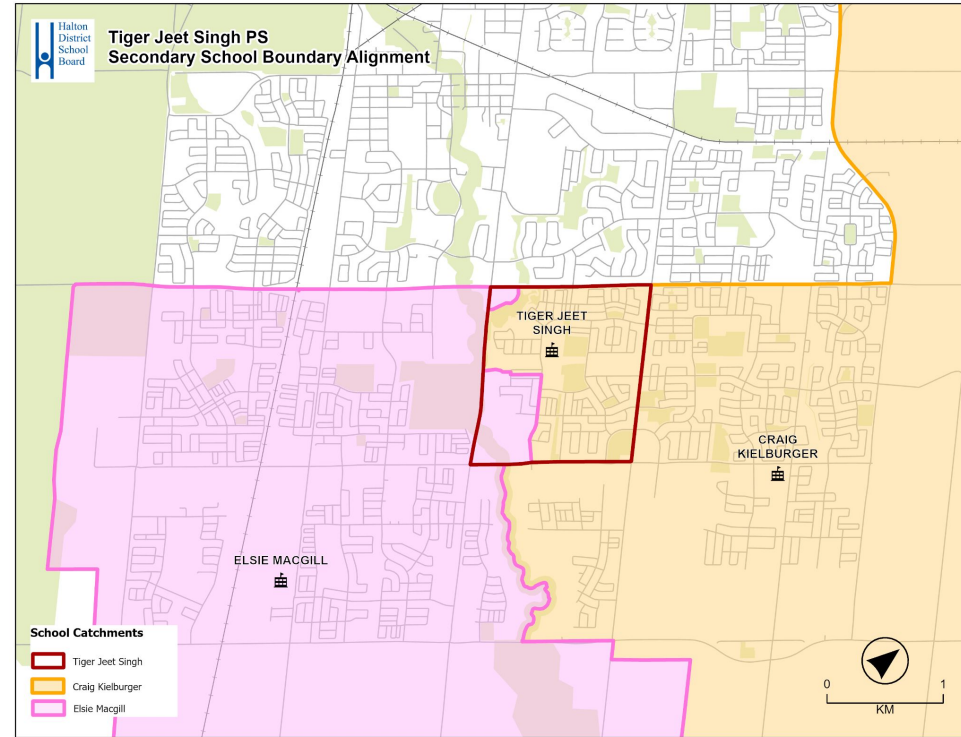
Tiger Jeet Singh PS Secondary School Boundary Alignment Study Resolution

Background:

At the March 4, 2025, Board meeting, HDSB Trustees approved a motion to initiate and complete a boundary review to align pathways for Tiger Jeet Singh PS and eliminate Grade 8 cohort ([link to report](#) - [link to map](#)).

Board Report Resolution:

BE IT RESOLVED THAT the Halton District School Board direct staff to initiate and complete a boundary review for **SRA 301 Milton West** (formerly SRA 104) and **SRA 302 Milton East** (Formerly ERA 105) to align pathways for Tiger Jeet Singh PS and eliminate the split Grade 8 cohort created by the approval of option 6a on January 7, 2025.



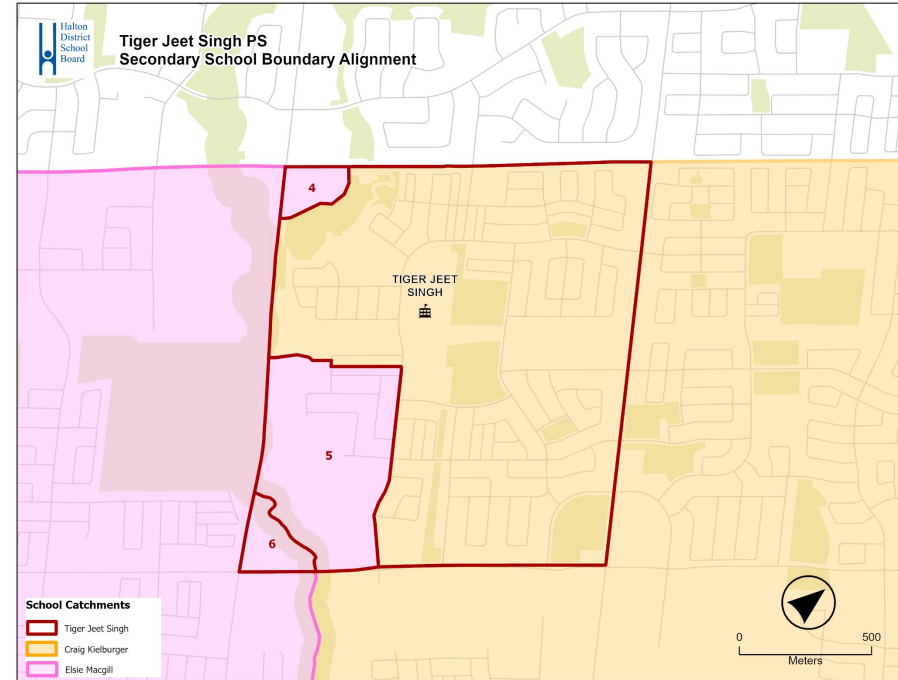
Administrative Procedure Review

Purpose of Boundary Review

The mandate of the Boundary Review will be to:

1. To align the grade 8 cohort to attend Craig Kielburger SS at Tiger Jeet Singh PS.

Effective date: September 2026



Administrative Procedure Review

Boundary Review Process

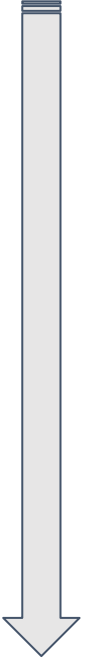
STEP 1 and 2

Director requests approval of Trustees to initiate a boundary review. The BRSC consisting of Board staff and Trustees review enrolments, school capacities and programs. Boundary option is generated and meeting schedule is established.

STEP 3 and 4

The BRSC will review the data, Boundary Review Criteria and initial option prepared by Facility Services and Planning Staff, and may request modifications and or additional options for consideration. the BRSC has developed a recommended option, it will be presented to the Director, who will consult with Administrative Counsel.

START

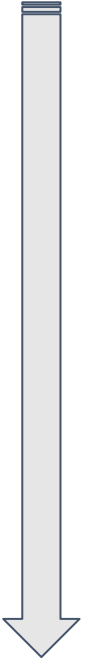


Administrative Procedure Review

Boundary Review Process

STEP 5

The Director's recommendation will be presented to the Board of Trustees for consideration and final approval. For clarification, the Director has the authority to make a recommendation to the Board of Trustees that is not consistent with what is preferred by the BRSC.



Communication Plan

Communication Platforms

Boundary study webpage:

Dedicated website where all public information pertaining to the Boundary Review will be posted, such as FAQs, Meeting Minutes, Options, Central Communications. Currently live on HDSB website (link).

Include notices on school websites and school social media.

School Messenger Communication:

During the study process, notices sent to affected school communities regarding process and proposed solutions.

- [Draft Update #1](#)

Tiger Jeet Singh P.S. Secondary School Boundary Alignment

Home / Schools / School Boundary Reviews / Current Boundary Reviews / Tiger Jeet Singh P.S. Secondary School Boundary Alignment /

Share

School Boundary Reviews

Boundary Review Frequently Asked Questions

Current Boundary Reviews

Adult, Alternative and Continuing Education

Distribution of Materials to Schools

Find My Local School

HDSB PA Days for 2024-2025

Information Technology in Schools

Our Schools

Program Accommodation Studies

Protection from COVID-19 and Other Respiratory Illness

Boundary Review Background

Board motion

Following the approval of Board Report 24158 on January 7, 2025, the catchment area for Tiger Jeet Singh Public School (PS) was expanded to increase its overall enrolment, taking Zones 4, 5, and 6 within its immediate neighbourhood that was formerly directed to Anne J. MacArthur PS for the elementary panel, and Elsie MacGill Secondary School (SS) for the Secondary Panel.

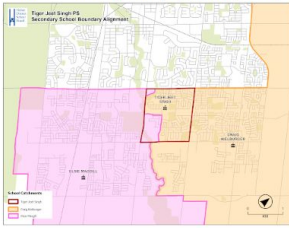
Given that Tiger Jeet Singh PS is directed to Craig Kielberger SS for the secondary panel, the boundary review has resulted in a divided Grade 8 cohort (see Figure 1). This challenge was highlighted in the implementation section of the approved Board Report.

Reviewing the number of Grade 8 students as of the 2024/2025 school year, we observe that approximately 90 Grade 8 English students reside in the historical Tiger Jeet Singh PS catchment, and 10 within the newly repatriated zones.

Given the small cohort, it is recommended that a **Pathway 2: Informing the Community** as there is only one (1) option, minimal impact on the secondary schools. The boundary review will be undertaken to adjust the secondary school boundary for secondary school students in the affected zones. **The Boundary Review Steering Committee (BRSC)** will make a recommendation to the **Director of Education** who will consult with the **Administrative Counsel**, before presenting the final proposal to the **Board of Trustee** for approval. **Implementation** is anticipated for students graduating grade 8 in the 2025/2026 school year.

BE IT RESOLVED THAT the Halton District School Board direct staff to initiate and complete a boundary review for SRA 301 Milton West (formerly SRA 104) and SRA 302 Milton East (Formerly ERA 105) to align pathways for Tiger Jeet Singh PS and eliminate the split Grade 8 cohort created by the approval of option 6a on January 7, 2025.

Below is the T.J.S. Secondary Boundary Alignment Study Area map illustrating the area under review:



For more information on the process and the roles and responsibilities of the committees, please review the [School Boundary](#)

"How to Read" Option Chart (a sample)

LINK

Link to Option Sheets

Public School

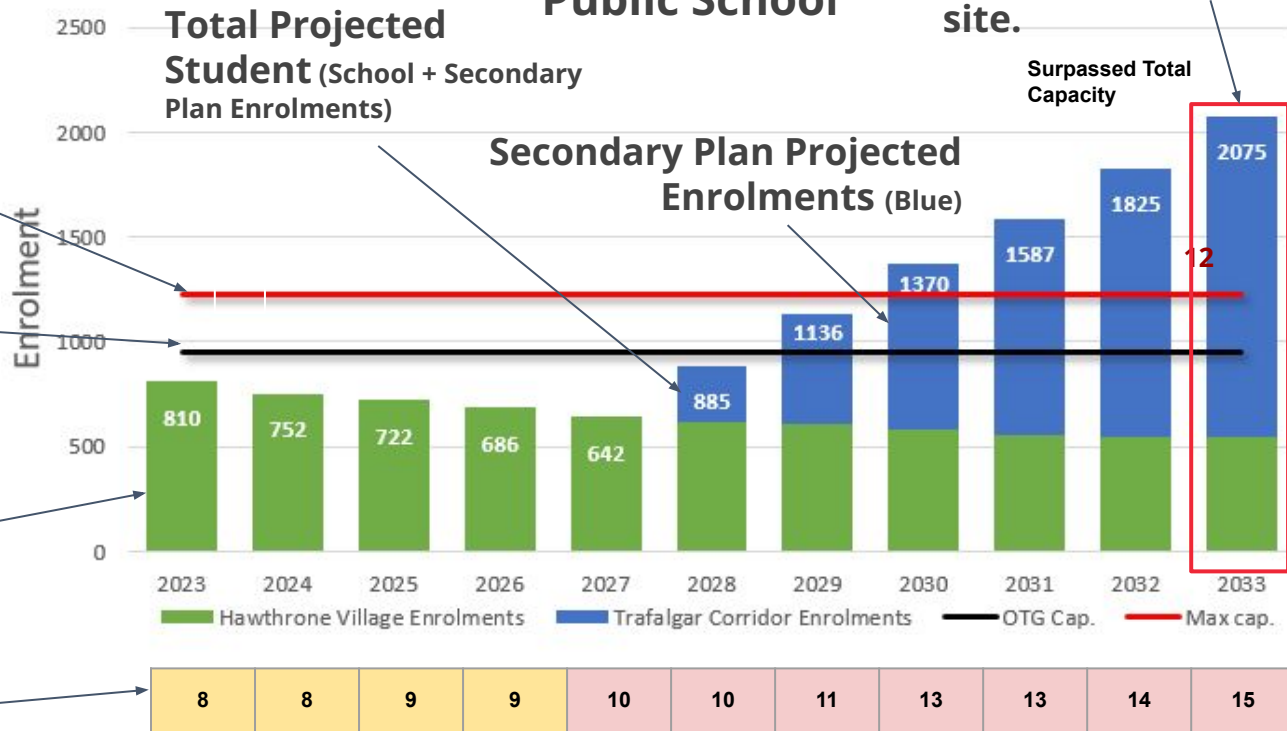
Portables Surpasses
Max allowed on
site.

Total Capacity
(OTG + Portables)

Building Capacity
(OTG Capacity)

**School Projected
Enrolments (Green)**

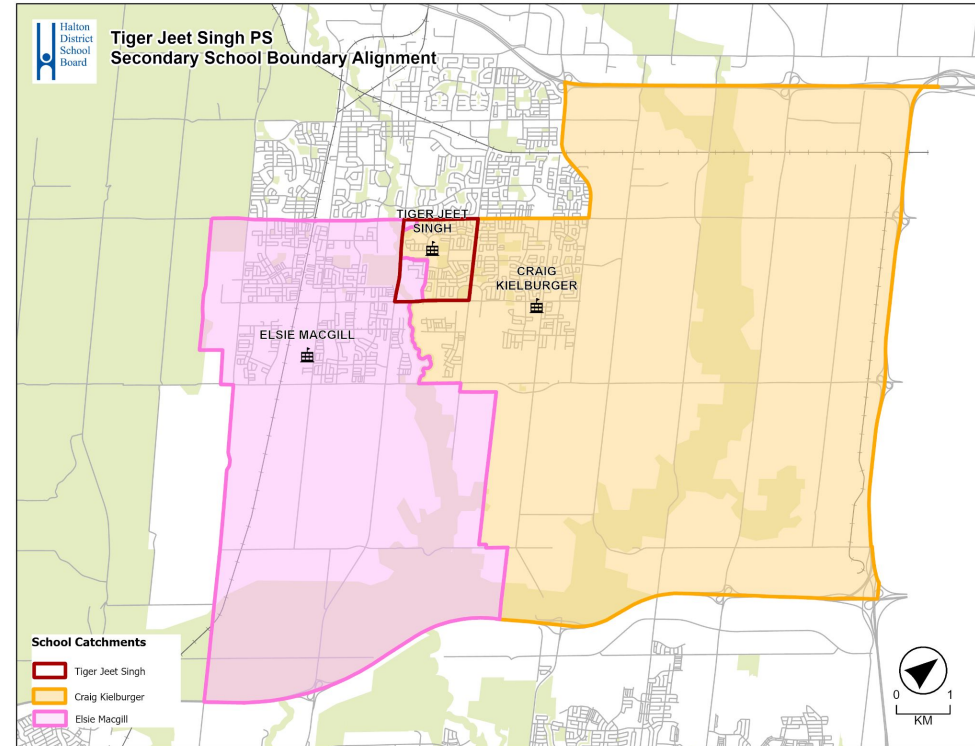
Portable Count



Boundary Review Study Area

Profile of the Study Area

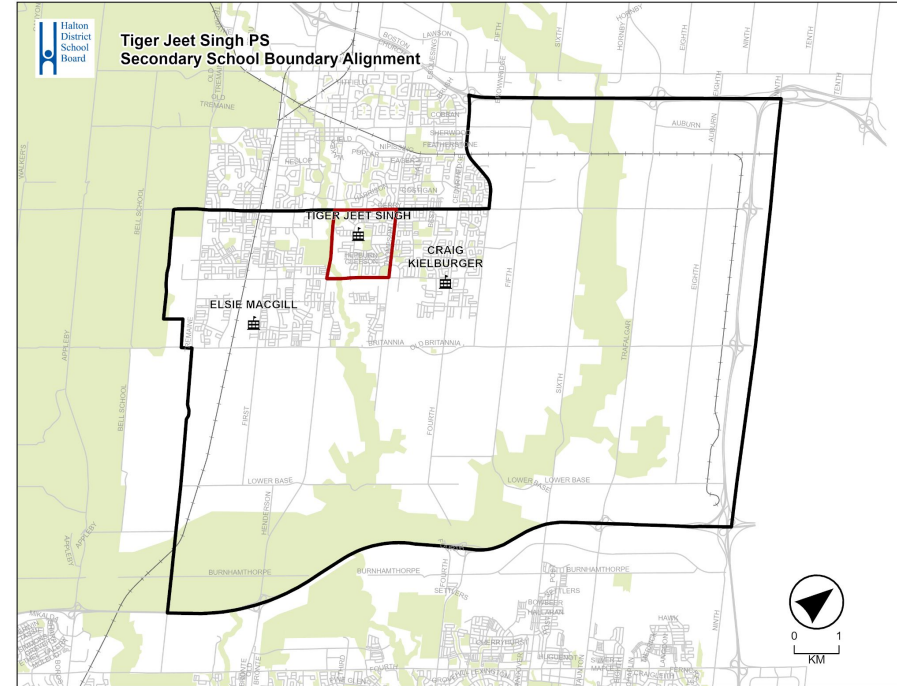
- The study area is the area south Derry Rd focusing on the Tiger Jeet Singh PS catchment.
- Schools Involved in study
 - Craig Kielburger SS
 - Elsie MacGill sS



Assumptions

Major school and program assumptions

1. New boundaries are effective Sept 2026.
2. One Option for review - new areas to the Tiger Jeet Singh PS catchment are directed to be directed to Craig Kielburger SS. (adjustment to the Craig Kielburger SS boundary)
3. Approximately:
 - a. 67% of English students attend CKSS English Program from Tiger Jeet Singh
 - b. 23% of FI students attend CKSS English program
4. Feb 1, 2025 - 14 grade 8s attend Anne J. MacArthur and directed to Elsie MacGill.



Craig Kielburger SS



School Stats

OTG Capacity: 1,383
OTG Max Capacity: 1,887
Max # of Portables: 24
Utilization (2024/25): 127%
No. of Classrooms: 62*

*Excludes SPED and portables,

Programs



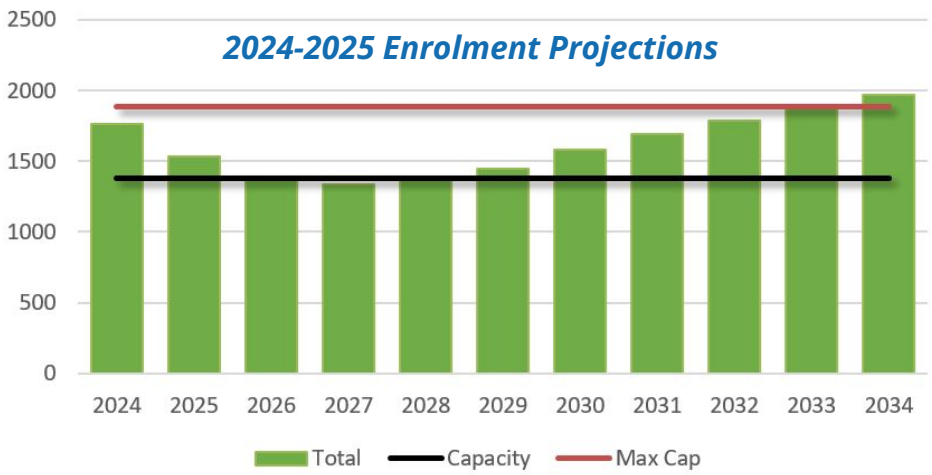
Why is my school involved?

It is proposed to expand the English boundary to include all of Tiger Jeet Singh PS catchment. There will be no impact to the FI boundary or programs.

Current Accommodation Scenario:

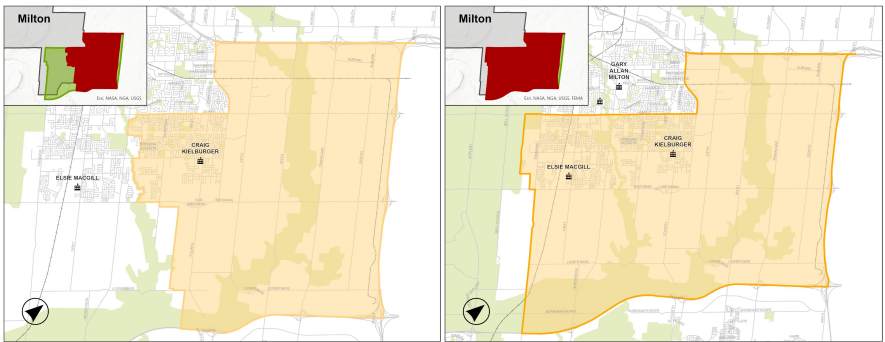
As a result of the South Milton Boundary review, Tiger Jeet Singh PS developed a split grade 8 English catchment. The majority of students to attend Craig Kielburger S for grade 9, a small fraction of students to attend Elsie MacGill SS. Britannia and Trafalgar Corridors projections included at Craig Kielburger SS.

Feeder Schools: (English) Cedar Ridge PS, Hawthorne Village PS, Irma Coulson PS, Tiger Jeet Singh PS, Milton SE #13 ps **(FI)** Anne J. MacArthur PS, Irma Coulson PS, P.L. Robertson PS, Tiger Jeet Singh PS



18	7	0	0	0	3	9	15	19	24	28
----	---	---	---	---	---	---	----	----	----	----

Current English and FI Attendance Areas (2024/2025)



Elsie MacGill SS



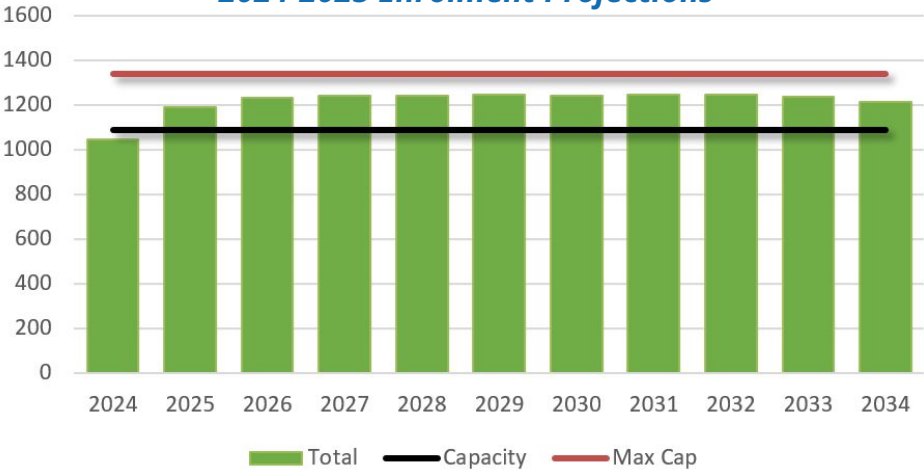
School Stats

OTG Capacity: 1089
OTG Max Capacity: 1341
Max # of Portables: 12
Utilization (2024/25): 96%
No. of Classrooms: 51*
*Excludes SPED and portables,

Programs



2024-2025 Enrolment Projections



0	5	7	7	7	7	7	7	7	7	6
---	---	---	---	---	---	---	---	---	---	---

Why is my school involved?

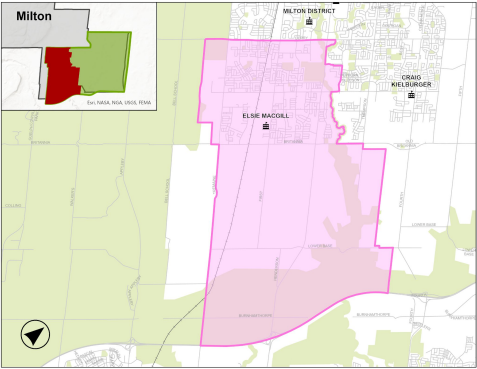
It is proposed to reduce this boundary, to enable all grade 8s at Tiger Jeet Singh PS to attend Craig Kielburger SS.

Current Accommodation Scenario:

As a result of the South Milton Boundary review, Tiger Jeet Singh PS developed a split grade 8 English catchment. The majority of students to attend Craig Kielburger S for grade 9, a small fraction of students to attend Elsie MacGill SS.

Feeder Schools: (English) Anne J. MacArthur, Boyne PS, Cedar Ridge PS, Rattlesnake Point PS, P.L. Robertson PS, Tiger Jeet Singh PS, Viola Desmond PS

Current English Attendance Areas (2024/2025)



Administrative Procedure Review

Actions for BRSC to consider to advance next steps:

1. Make the determination as to which consultation process pathway will be utilized. **Staff Recommendation:**

PATHWAY 2 - BRSC recommendation to the Director, presentation to the Board, opportunities to delegate

- One option for review
- Impacts minimum number of students

2. Determine and communicate which schools are part of the Boundary Review Process. **Staff Recommendation:**

SRA 301: *Elsie MacGill SS*

SRA 302: *Craig Kielburger SS*



Administrative Procedure Review

Actions for BRSC to consider to advance next steps (con't):

3. Scope of the Review

- To create unified grade 8 cohort from Tiger Jeet Singh PS to Craig Kielburger SS

4. Recommendation

- a. Option 1



Administrative Procedure Review

Actions for BRSC to consider to advance next steps (con't):

5. Meeting Dates

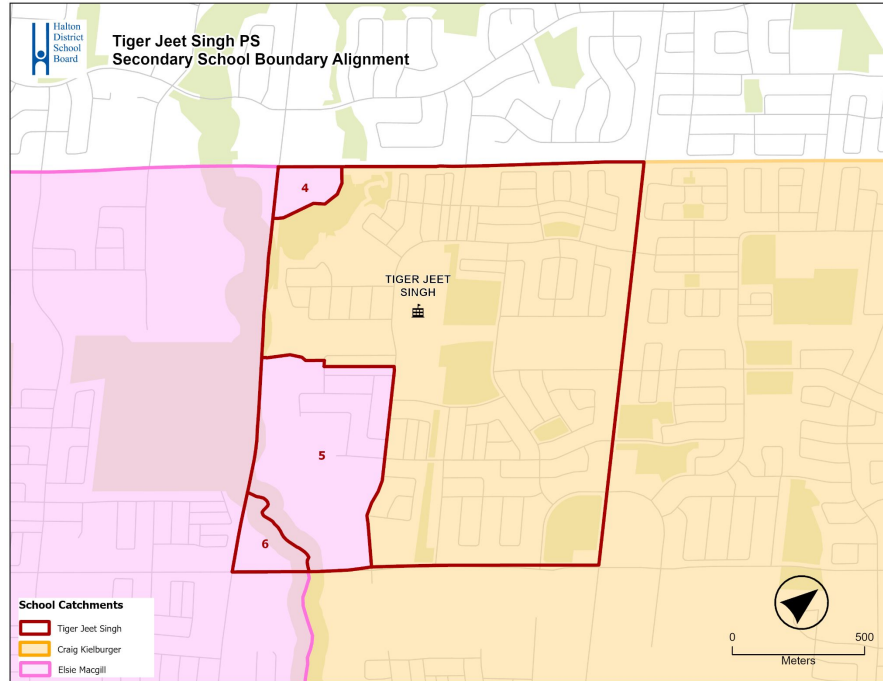
Item	Targeted Date/Week
BRSC meeting #1 (Boundary Review Info and Options)	Monday April 7, 2025
Board Meeting: Tiger Jeet Singh PS Secondary School Boundary Alignment (For Information)	Tuesday May 6, 2025
Board Meeting: Tiger Jeet Singh PS Secondary School Boundary Alignment (For Decision)	Tuesday June 3, 2025



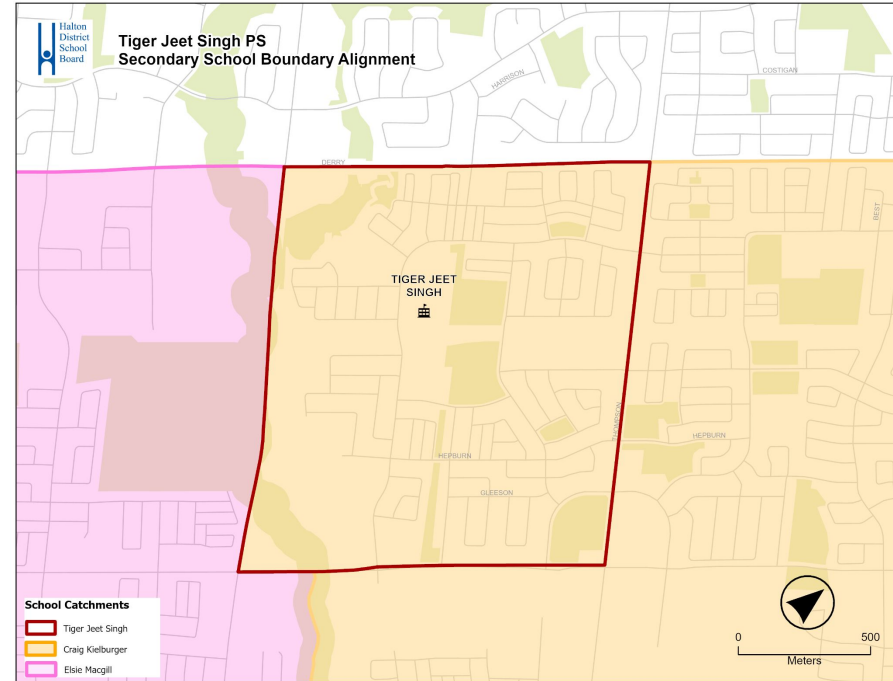
OPTION REVIEW

Preliminary Set

Status Quo



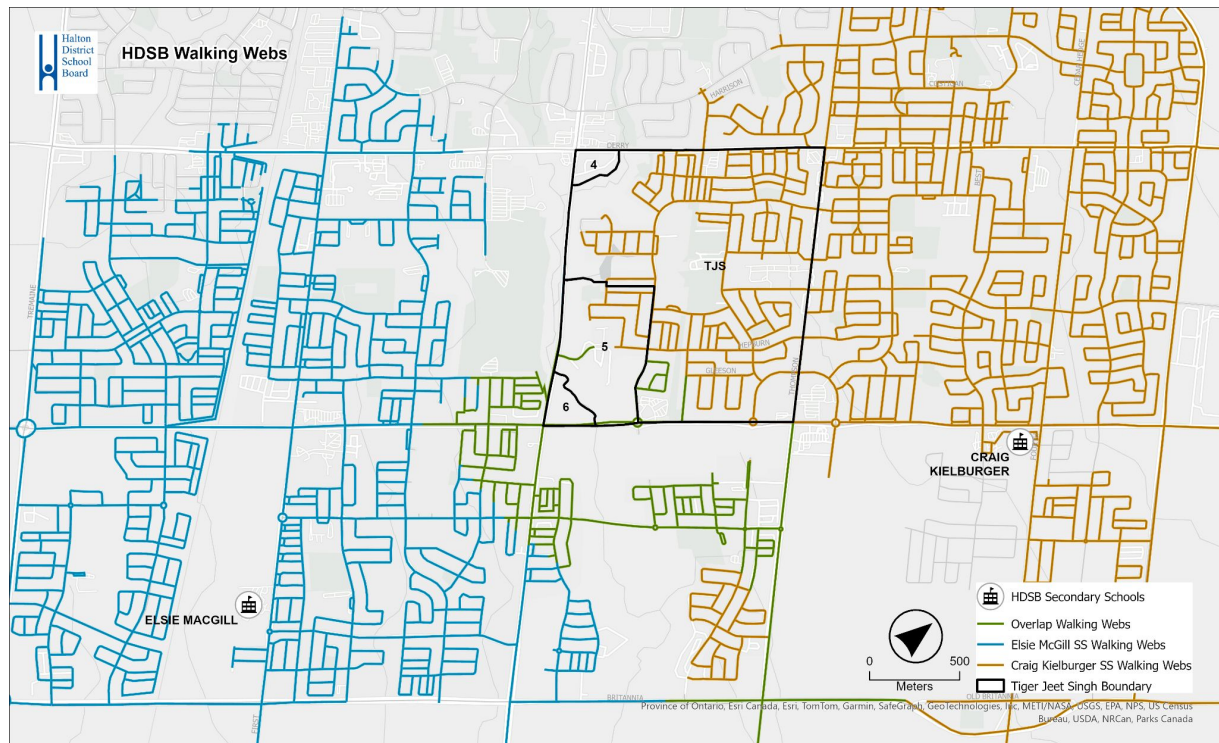
Option 1



Walking Areas

Transport / Non-Transport Areas:

- Area 4 - requires **transportation** to both high schools
- Area 5
 - Requires **transportation** to *Elsie MacGill SS*, (for most areas)
 - Within **walking** distance to *Craig Kielburger SS*
- Area 6 - within **walking** distance to both school
 - Shorter walking distance to *Craig Kielburger SS*

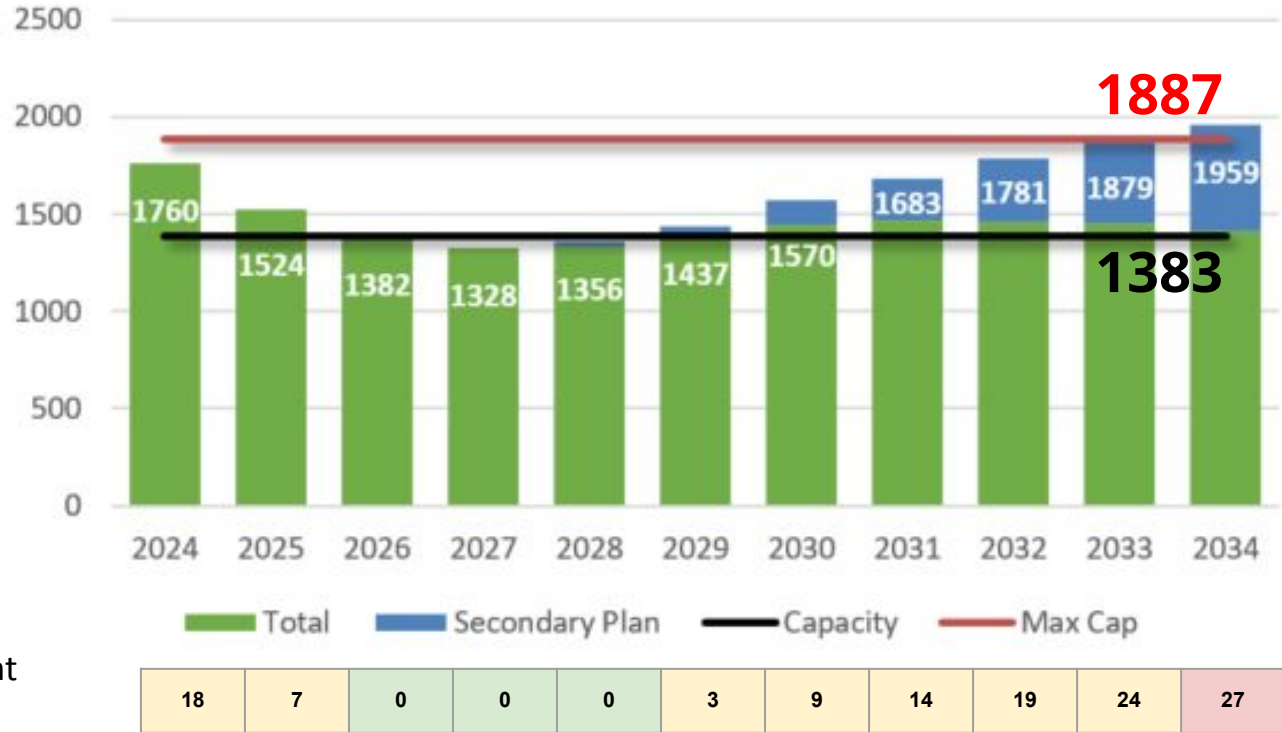


Status Quo - Projections

Craig Kielburger SS

Craig Kielburger SS summary:

- School offers 9-12 English, FI, ESL, IB, and SPED programs
- Expanded FI catchment includes Elsie MacGill SS.
- Requires 0 to 27 portables.
- Developments include Trafalgar Secondary Plan, Britannia Secondary Plan
- 2 Proposed secondary schools within its catchment



MAX PORTABLES: 24

Status Quo - Projections

Elsie MacGill:

- School offers 9-12 English, ISTEM and SPED programs.
- FI attends Craig Kielburger
- 5 to 7 portables are required.
- Projections include Milton Education Village Secondary Plan

Elsie MacGill SS



0	5	7	7	7	7	7	7	7	7	6
---	---	---	---	---	---	---	---	---	---	---

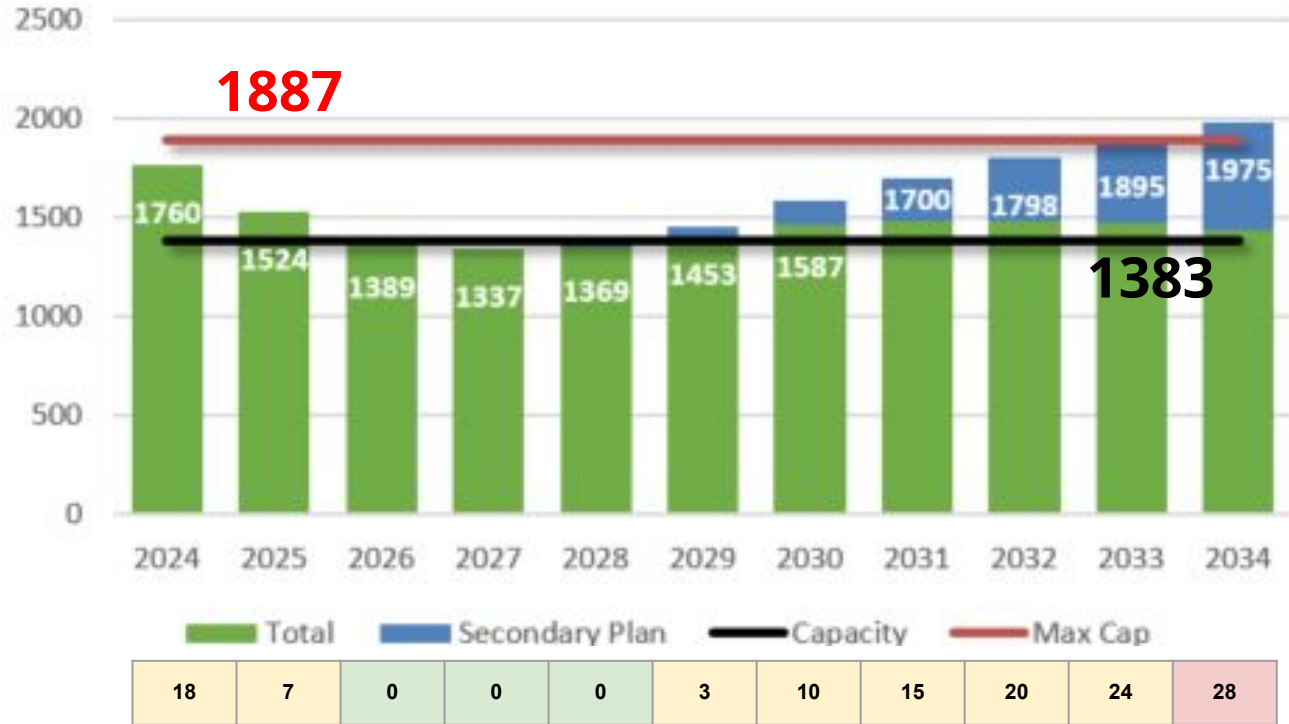
MAX PORTABLES: 18

Option 1 - Projections

Craig Kielburger SS summary:

- Boundary change: Tiger Jeet Singh PS new boundary attends Craig Kielburger SS.
- Minor impact to enrolments (~15 students/year).
- Approximately one additional portable in years 2030+

Craig Kielburger SS



MAX PORTABLES: 18

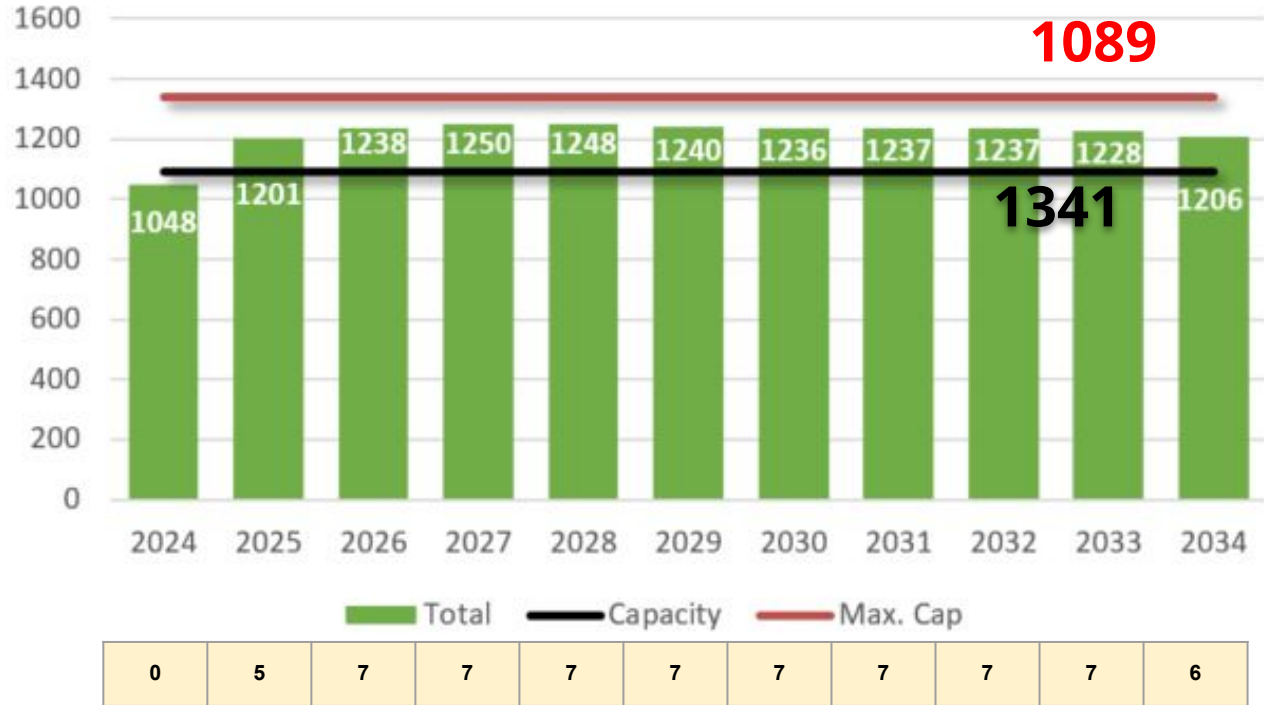
Option 1 - Projections

Elsie MacGill SS

summary:

- Boundary change: Areas that attend Anne J MacArthur PS and now attend Tiger Jeet Singh PS directed to Craig Kielburger
 - Boundary reduction
- Minor impact to enrolments (<10/year).

Elsie MacGill SS

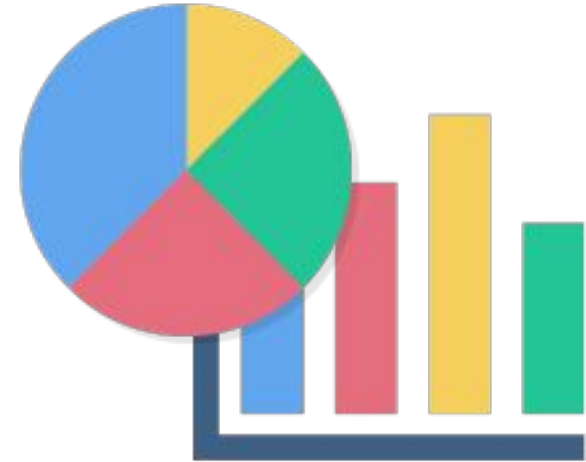


MAX PORTABLES: 18

Option Worksheets & Resources

Additional Resources:

1. Maps and projections can be found in more detail in the Boundary Study Google Shared Drive
2. Option Worksheets
 - a. Current Status Quo
 - b. Option 1
3. Boundary review [criteria](#) to consider



QUESTIONS?