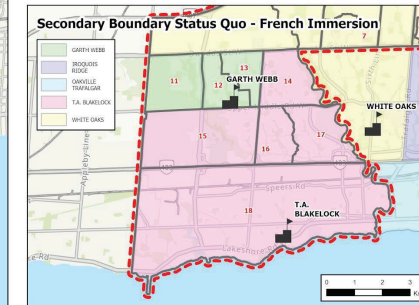
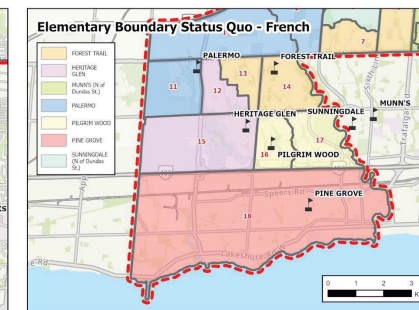
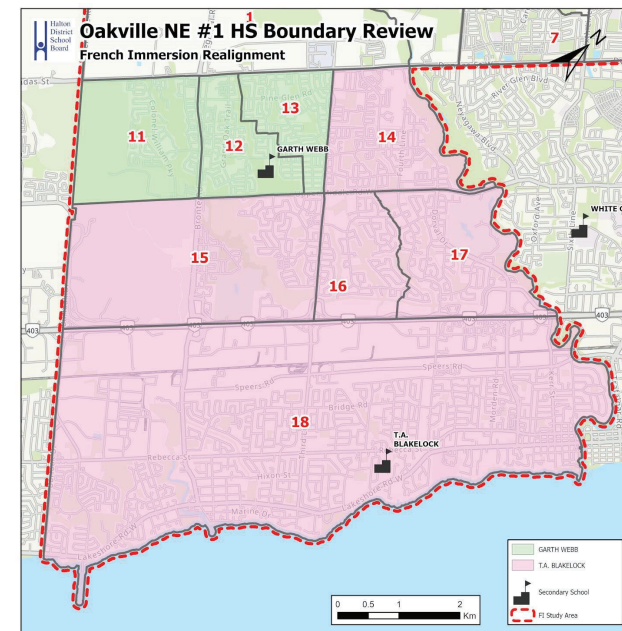


# Status Quo - South of Dundas (FI secondary) Boundaries effective for the 2025/2026 school year

## Existing Boundaries and Zone Distribution

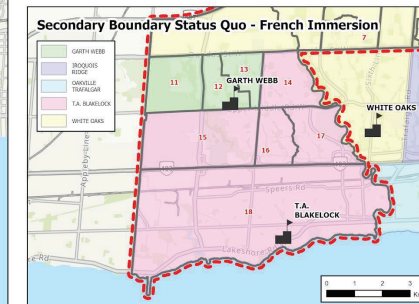
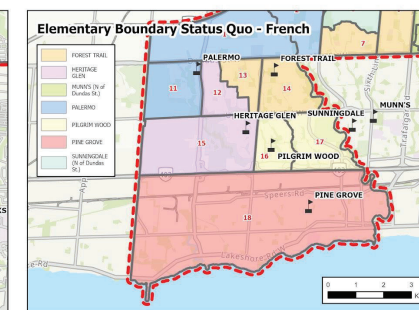
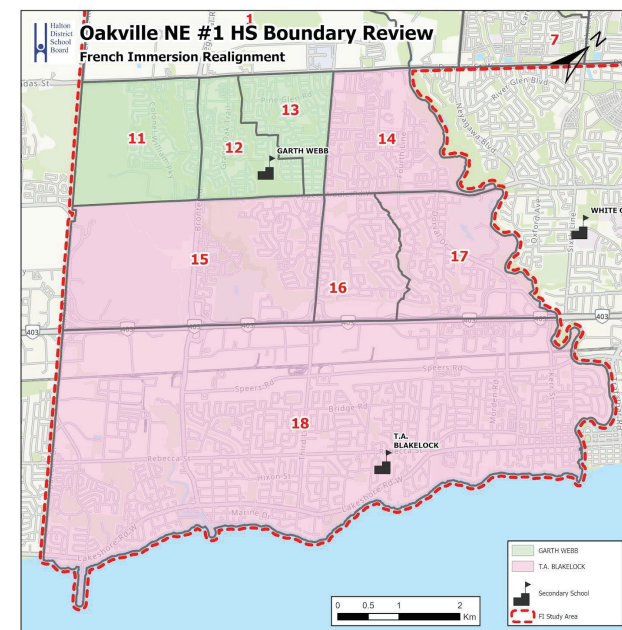
Zone	Program	JK-8	Gr9	Gr10	Gr11	Gr12
11	ENG					
	FI	Palermo	Garth Webb	Garth Webb	Garth Webb	Garth Webb
12	ENG					
	FI	Heritage Glen	Garth Webb	Garth Webb	Garth Webb	Garth Webb
13	ENG					
	FI	Forest Trail	Garth Webb	Garth Webb	Garth Webb	Garth Webb
14	ENG					
	FI	Forest Trail	T.A. Blakelock	T.A. Blakelock	T.A. Blakelock	T.A. Blakelock
15	ENG					
	FI	Heritage Glen	T.A. Blakelock	T.A. Blakelock	T.A. Blakelock	T.A. Blakelock
16, 17	ENG					
	FI	Pilgrim Wood	T.A. Blakelock	T.A. Blakelock	T.A. Blakelock	T.A. Blakelock
18	ENG					
	FI	Pine Grove	T.A. Blakelock	T.A. Blakelock	T.A. Blakelock	T.A. Blakelock



# Status Quo - South of Dundas (FI secondary) 2026/2027 School Year - No Implementation

## Existing Boundaries and Zone Distribution

Zone	Program	JK-8	Gr9	Gr10	Gr11	Gr12
11	ENG					
	FI	Palermo	Garth Webb	Garth Webb	Garth Webb	Garth Webb
12	ENG					
	FI	Heritage Glen	Garth Webb	Garth Webb	Garth Webb	Garth Webb
13	ENG					
	FI	Forest Trail	Garth Webb	Garth Webb	Garth Webb	Garth Webb
14	ENG					
	FI	Forest Trail	T.A. Blakelock	T.A. Blakelock	T.A. Blakelock	T.A. Blakelock
15	ENG					
	FI	Heritage Glen	T.A. Blakelock	T.A. Blakelock	T.A. Blakelock	T.A. Blakelock
16, 17	ENG					
	FI	Pilgrim Wood	T.A. Blakelock	T.A. Blakelock	T.A. Blakelock	T.A. Blakelock
18	ENG					
	FI	Pine Grove	T.A. Blakelock	T.A. Blakelock	T.A. Blakelock	T.A. Blakelock

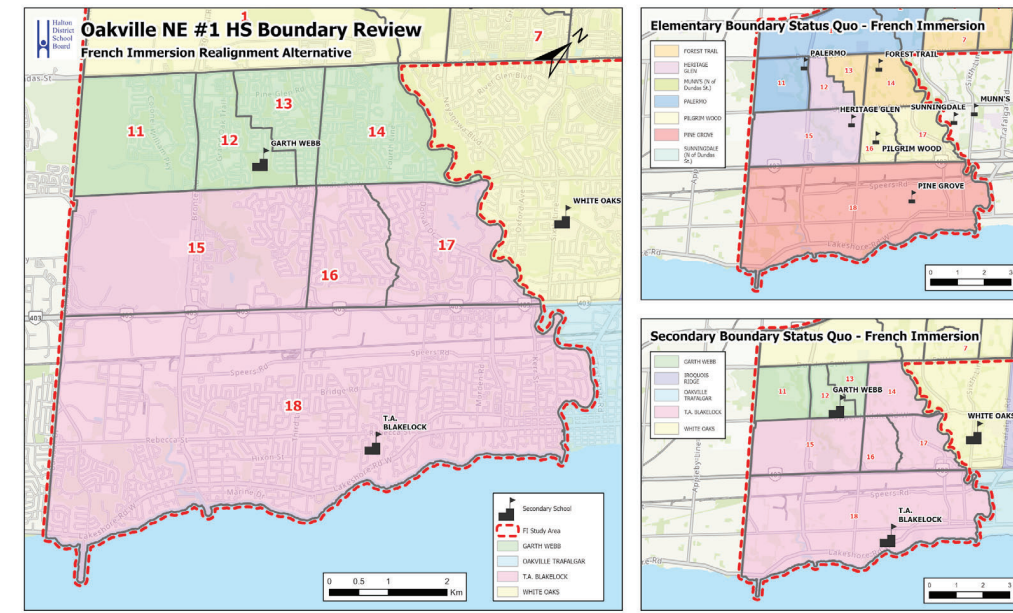


i. No change to existing boundaries or programs.

# Option 3 w/ South of Dundas FI secondary realignment 2027/2028 School Year - Year 1 of Implementation

**Implementation Table**

Zone	Program	JK-8	Gr9	Gr10	Gr11	Gr12
11	ENG					
	FI	Palermo	Garth Webb	Garth Webb	Garth Webb	Garth Webb
12	ENG					
	FI	Heritage Glen	Garth Webb	Garth Webb	Garth Webb	Garth Webb
13	ENG					
	FI	Forest Trail	Garth Webb	Garth Webb	Garth Webb	Garth Webb
14	ENG					
	FI	Forest Trail	Garth Webb	T.A. Blakelock	T.A. Blakelock	T.A. Blakelock
15	ENG					
	FI	Heritage Glen	T.A. Blakelock	T.A. Blakelock	T.A. Blakelock	T.A. Blakelock
16, 17	ENG					
	FI	Pilgrim Wood	T.A. Blakelock	T.A. Blakelock	T.A. Blakelock	T.A. Blakelock
18	ENG					
	FI	Pine Grove	T.A. Blakelock	T.A. Blakelock	T.A. Blakelock	T.A. Blakelock

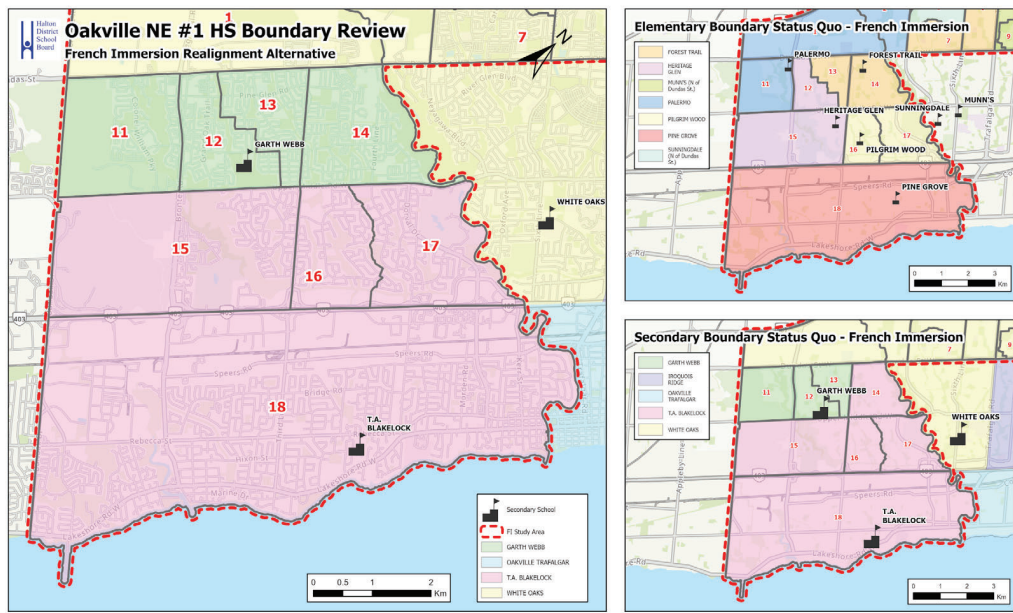


- i. Gr 9 FI students in **Zone 14** are directed to Garth Webb SS.
- Gr 10 to 12 FI students continue to attend T.A. Blakelock HS until graduation (legacy exemption).

# Option 3 w/ South of Dundas FI secondary realignment 2028/2029 School Year - Year 2 of Implementation

**Implementation Table**

Zone	Program	JK-8	Gr9	Gr10	Gr11	Gr12
11	ENG					
	FI	Palermo	Garth Webb	Garth Webb	Garth Webb	Garth Webb
12	ENG					
	FI	Heritage Glen	Garth Webb	Garth Webb	Garth Webb	Garth Webb
13	ENG					
	FI	Forest Trail	Garth Webb	Garth Webb	Garth Webb	Garth Webb
14	ENG					
	FI	Forest Trail	Garth Webb	Garth Webb	T.A. Blakelock	T.A. Blakelock
15	ENG					
	FI	Heritage Glen	T.A. Blakelock	T.A. Blakelock	T.A. Blakelock	T.A. Blakelock
16, 17	ENG					
	FI	Pilgrim Wood	T.A. Blakelock	T.A. Blakelock	T.A. Blakelock	T.A. Blakelock
18	ENG					
	FI	Pine Grove	T.A. Blakelock	T.A. Blakelock	T.A. Blakelock	T.A. Blakelock



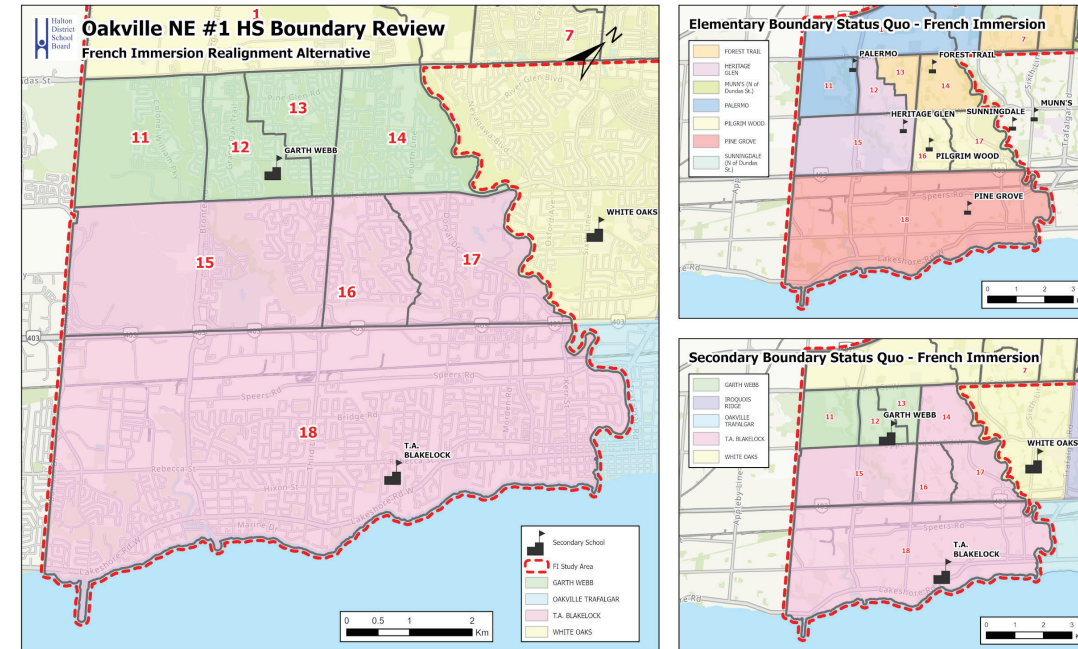
- i. Gr 11 and 12 FI students in **Zone 14** continue to attend T.A. Blakelock HS until graduation (legacy exemption).

# Option 3 w/ South of Dundas FI secondary realignment 2029/2030 School Year - Year 3 of Implementation

**Implementation Table**

Zone	Program	JK-8	Gr9	Gr10	Gr11	Gr12
11	ENG					
	FI	Palermo	Garth Webb	Garth Webb	Garth Webb	Garth Webb
12	ENG					
	FI	Heritage Glen	Garth Webb	Garth Webb	Garth Webb	Garth Webb
13	ENG					
	FI	Forest Trail	Garth Webb	Garth Webb	Garth Webb	Garth Webb
14	ENG					
	FI	Forest Trail	Garth Webb	Garth Webb	Garth Webb	T.A. Blakelock
15	ENG					
	FI	Heritage Glen	T.A. Blakelock	T.A. Blakelock	T.A. Blakelock	T.A. Blakelock
16, 17	ENG					
	FI	Pilgrim Wood	T.A. Blakelock	T.A. Blakelock	T.A. Blakelock	T.A. Blakelock
18	ENG					
	FI	Pine Grove	T.A. Blakelock	T.A. Blakelock	T.A. Blakelock	T.A. Blakelock

- i. Gr 12 FI students in **Zone 14** continue to attend T.A. Blakelock HS until graduation (legacy exemption).



# Option 3 w/ South of Dundas FI secondary realignment 2030/2031 School Year - Year 4 of Implementation (Complete)

**Implementation Table**

Zone	Program	JK-8	Gr9	Gr10	Gr11	Gr12
11	ENG					
	FI	Palermo	Garth Webb	Garth Webb	Garth Webb	Garth Webb
12	ENG					
	FI	Heritage Glen	Garth Webb	Garth Webb	Garth Webb	Garth Webb
13	ENG					
	FI	Forest Trail	Garth Webb	Garth Webb	Garth Webb	Garth Webb
14	ENG					
	FI	Forest Trail	Garth Webb	Garth Webb	Garth Webb	Garth Webb
15	ENG					
	FI	Heritage Glen	T.A. Blakelock	T.A. Blakelock	T.A. Blakelock	T.A. Blakelock
16, 17	ENG					
	FI	Pilgrim Wood	T.A. Blakelock	T.A. Blakelock	T.A. Blakelock	T.A. Blakelock
18	ENG					
	FI	Pine Grove	T.A. Blakelock	T.A. Blakelock	T.A. Blakelock	T.A. Blakelock

- i. Implementation phasing is complete.

