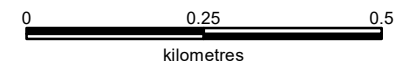


C.H. NORTON PS

SCHOOL INFORMATION:

C.H. Norton PS
2120 Cleaver Avenue
Burlington L7M 4B6
(905) 332-3897

Program Structure:
English JK-8



The street network was provided by the Regional Municipality of Halton and the Region assumes no responsibility or liability for its use or accuracy.

It is the intention of the HDSB to provide up-to-date and accurate information, and reasonable efforts have been made by the HDSB to verify the information, however a degree of error or change is inherent. This information is distributed "as is" without warranty.

HDSB assume no legal liability or responsibility for the accuracy, completeness, or usefulness of any information. If you require additional information please contact the Planning Department at 905-335-3663.

Boundaries are subject to change.

