

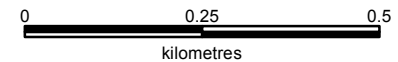
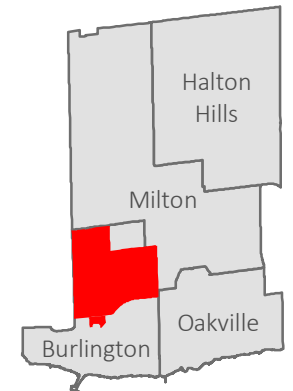
(SEE RURAL MAP BELOW)

BRUCE T. LINDLEY PS

SCHOOL INFORMATION:

Bruce T. Lindley PS
2510 Cavendish Drive,
Burlington L7P 4K5
(905) 335-0679

Program Structure:
English JK-6,
French Immersion 1-6

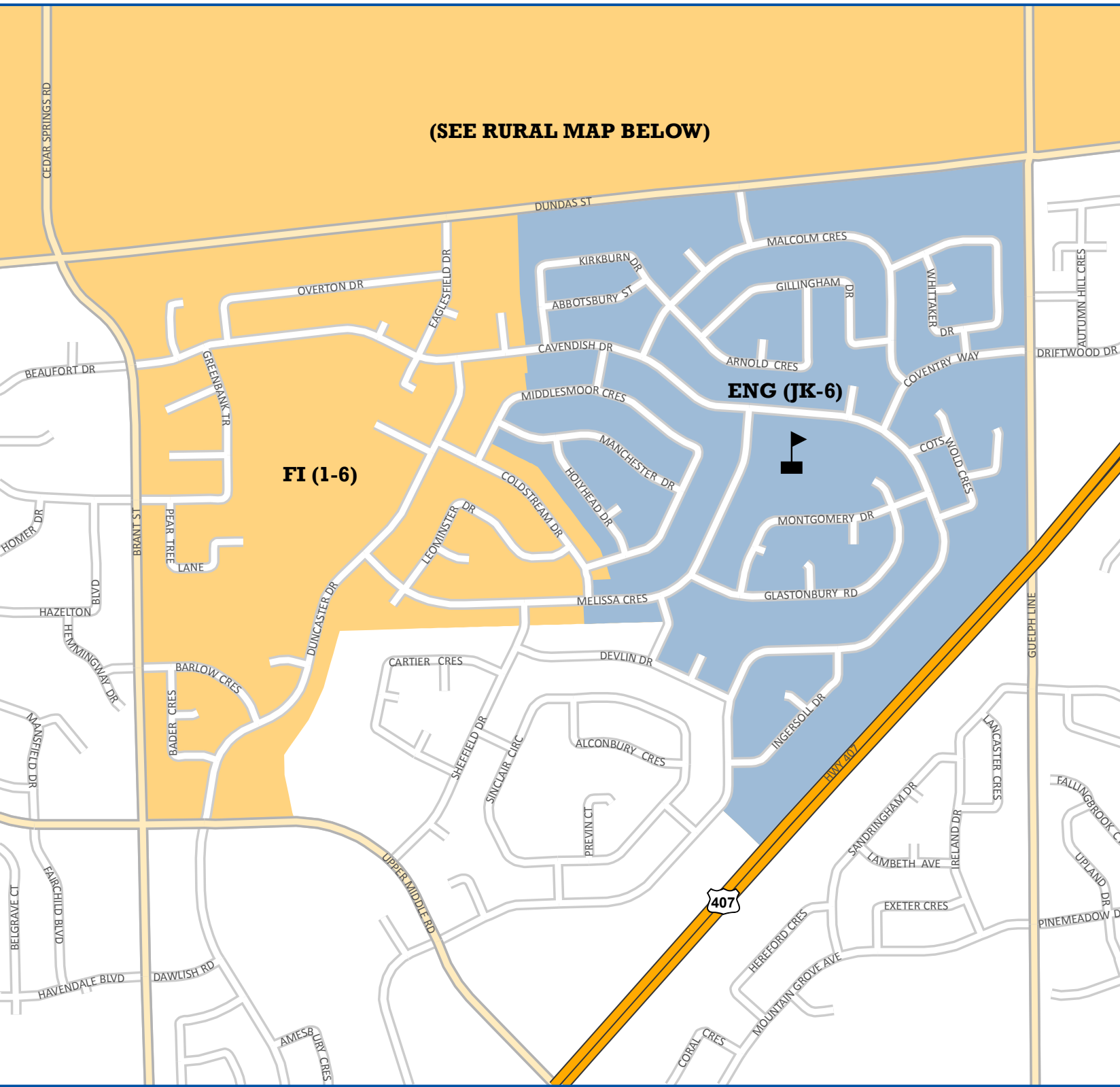


The street network was provided by the Regional Municipality of Halton and the Region assumes no responsibility or liability for its use or accuracy.

It is the intention of the HDSB to provide up-to-date and accurate information, and reasonable efforts have been made by the HDSB to verify the information, however a degree of error or change is inherent. This information is distributed "as is" without warranty.

HDSB assume no legal liability or responsibility for the accuracy, completeness, or usefulness of any information. If you require additional information please contact the Planning Department at 905-335-3663.

Boundaries are subject to change.

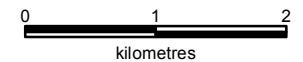
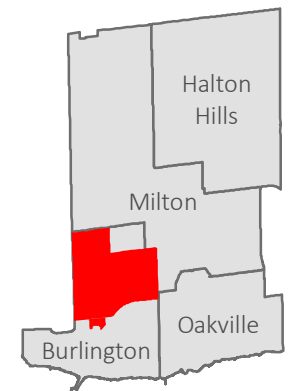


BRUCE T. LINDLEY PS

SCHOOL INFORMATION:

Bruce T. Lindley PS
2510 Cavendish Drive,
Burlington L7P 4K5
(905) 335-0679

Program Structure:
English JK-6,
French Immersion 1-6

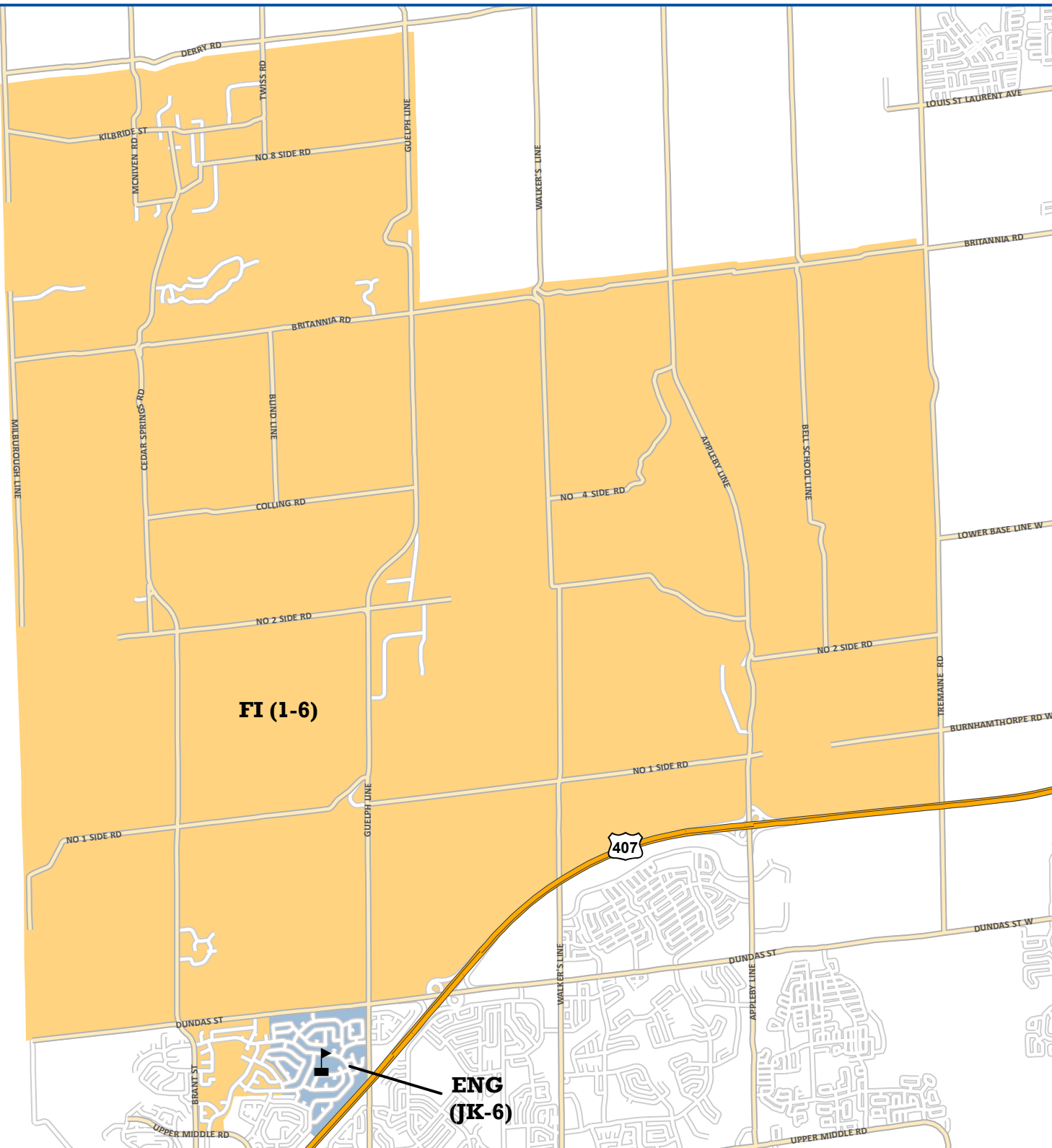


The street network was provided by the Regional Municipality of Halton and the Region assumes no responsibility or liability for its use or accuracy.

It is the intention of the HDSB to provide up-to-date and accurate information, and reasonable efforts have been made by the HDSB to verify the information, however a degree of error or change is inherent. This information is distributed "as is" without warranty.

HDSB assume no legal liability or responsibility for the accuracy, completeness, or usefulness of any information. If you require additional information please contact the Planning Department at 905-335-3663.

Boundaries are subject to change.



FI (1-6)

**ENG
(JK-6)**