

Draft for Discussion Purposes Only

This non-transported area shown is preliminary based on current information, and will be finalized by Halton Student Transportation Services (HSTS)

Safe crossing of Thompson Road, Reg Rd 25, Bronte St, Derry Rd, Louis St Laurent, Tremaine Road and Britannia Road will be determined based on posted speed limits, controlled intersections and placement of crossing guards.

0 500 1,000
Meters

ENG & FI Catchments

FI Catchment

Halton District School Board
Planning Department

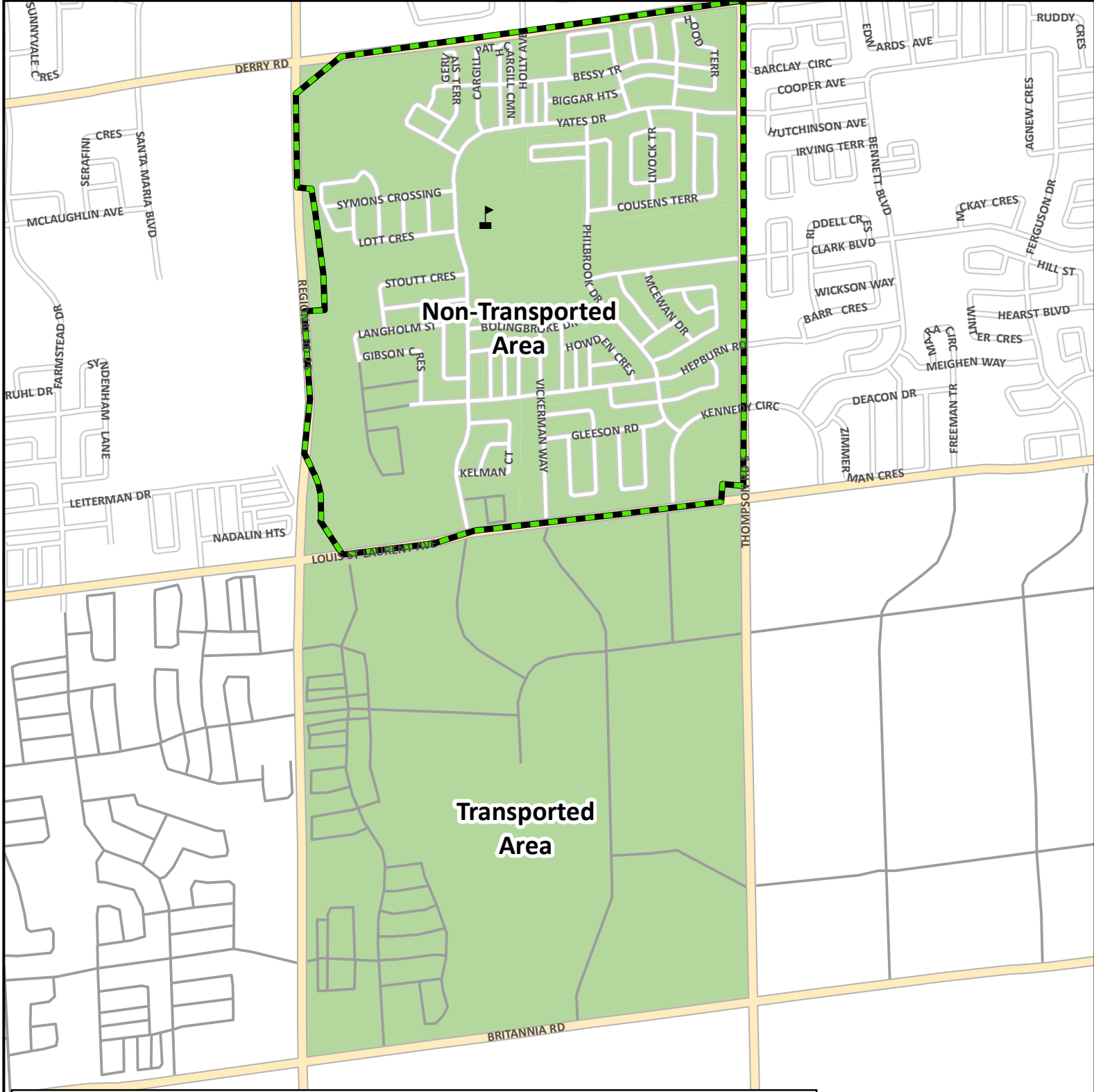
**Transported and Non-Transported Area
Within Current Catchment Area
Anne J. MacArthur**

The current street network was provided by the Regional Municipality of Halton and the Region assumes no responsibility or liability for its use or accuracy.

Proposed roads are subject to change.

It is the intention of the HDSB to provide up-to-date and accurate information, and reasonable efforts have been made by the HDSB to verify the information, however a degree of error or change is inherent. This information is distributed "as is" without warranty. HDSB assume no legal liability or responsibility for the accuracy, completeness, or usefulness of any information. If you require additional information please contact the Planning Department at 905-335-3663.

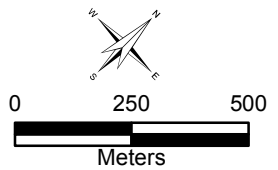




Draft for Discussion Purposes Only

This non-transported area shown is preliminary based on current information, and will be finalized by Halton Student Transportation Services (HSTS)

Safe crossing of Thompson Road, Reg Rd 25, Bronte St, Derry Rd, Louis St Laurent, Tremaine Road and Britannia Road will be determined based on posted speed limits, controlled intersections and placement of crossing guards.



Halton District School Board
Planning Department

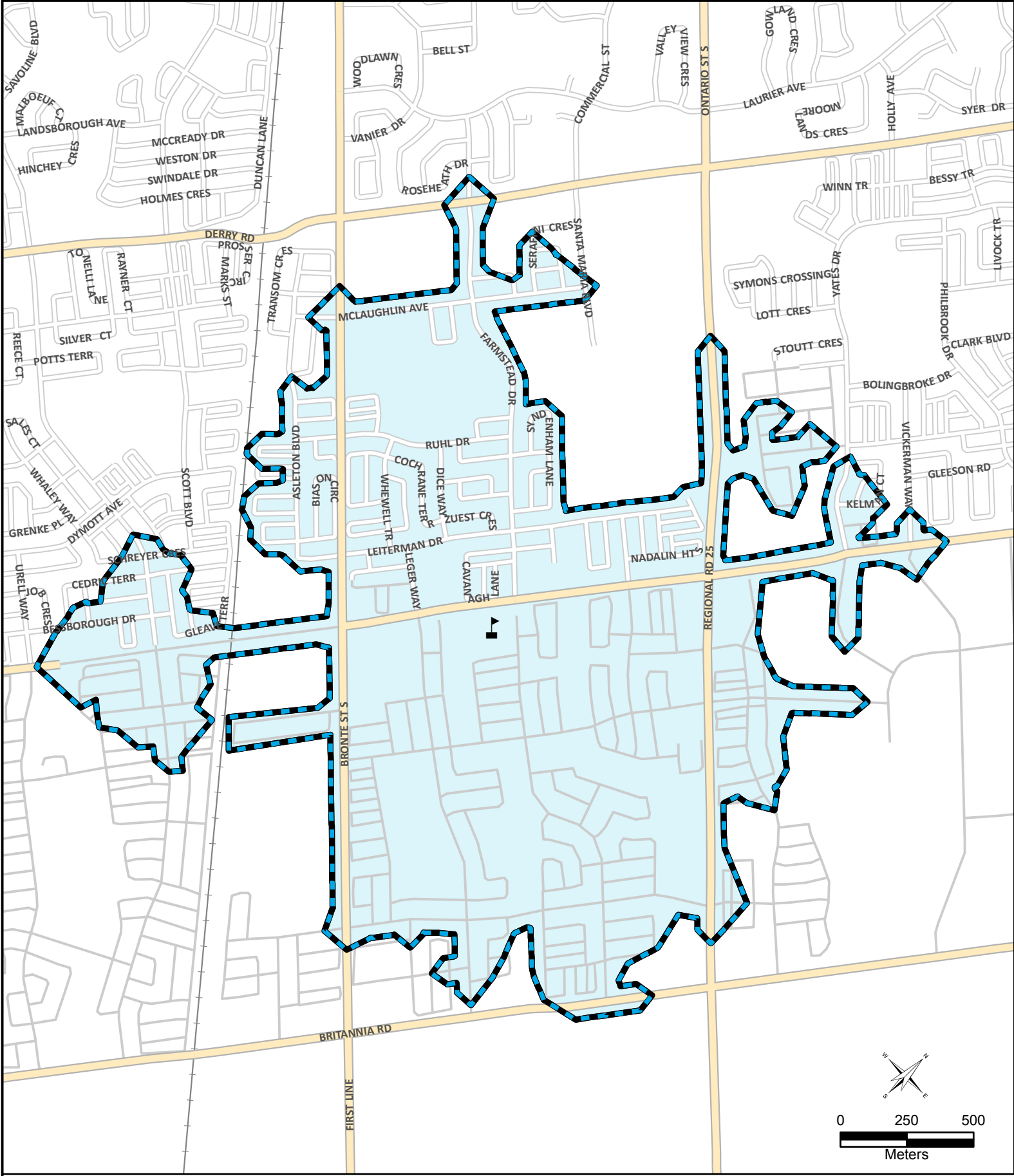
**Transported and Non-Transported Area
Within Current Catchment Area
Tiger Jeet Singh**

The current street network was provided by the Regional Municipality of Halton and the Region assumes no responsibility or liability for its use or accuracy.

Proposed roads are subject to change.

It is the intention of the HDSB to provide up-to-date and accurate information, and reasonable efforts have been made by the HDSB to verify the information, however a degree of error or change is inherent. This information is distributed "as is" without warranty. HDSB assume no legal liability or responsibility for the accuracy, completeness, or usefulness of any information. If you require additional information please contact the Planning Department at 905-335-3663.





Halton District School Board
Planning Department

Non-Transported Area Milton SW # 9 ps



The current street network was provided by the Regional Municipality of Halton and the Region assumes no responsibility or liability for its use or accuracy.

Proposed roads are subject to change.

It is the intention of the HDSB to provide up-to-date and accurate information, and reasonable efforts have been made by the HDSB to verify the information, however a degree of error or change is inherent. This information is distributed "as is" without warranty. HDSB assume no legal liability or responsibility for the accuracy, completeness, or usefulness of any information. If you require additional information please contact the Planning Department at 905-335-3663.