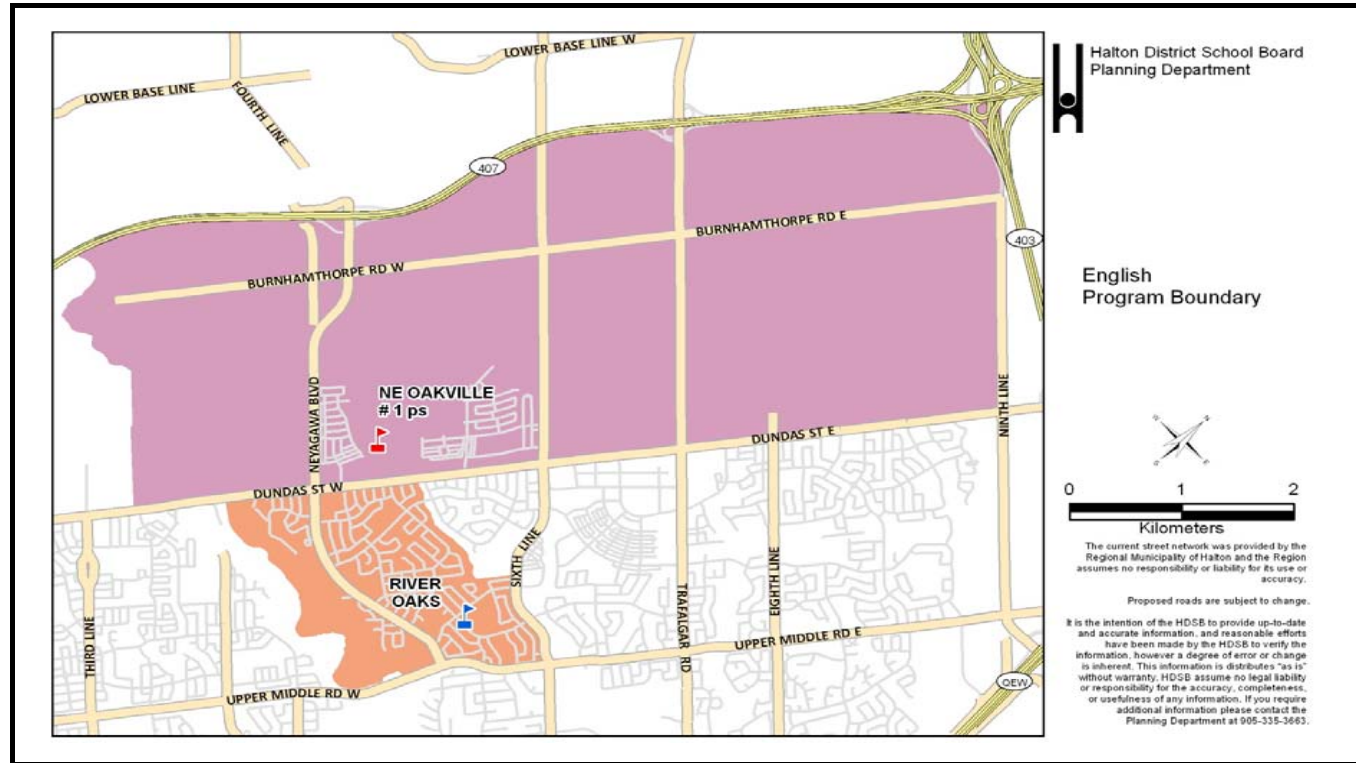
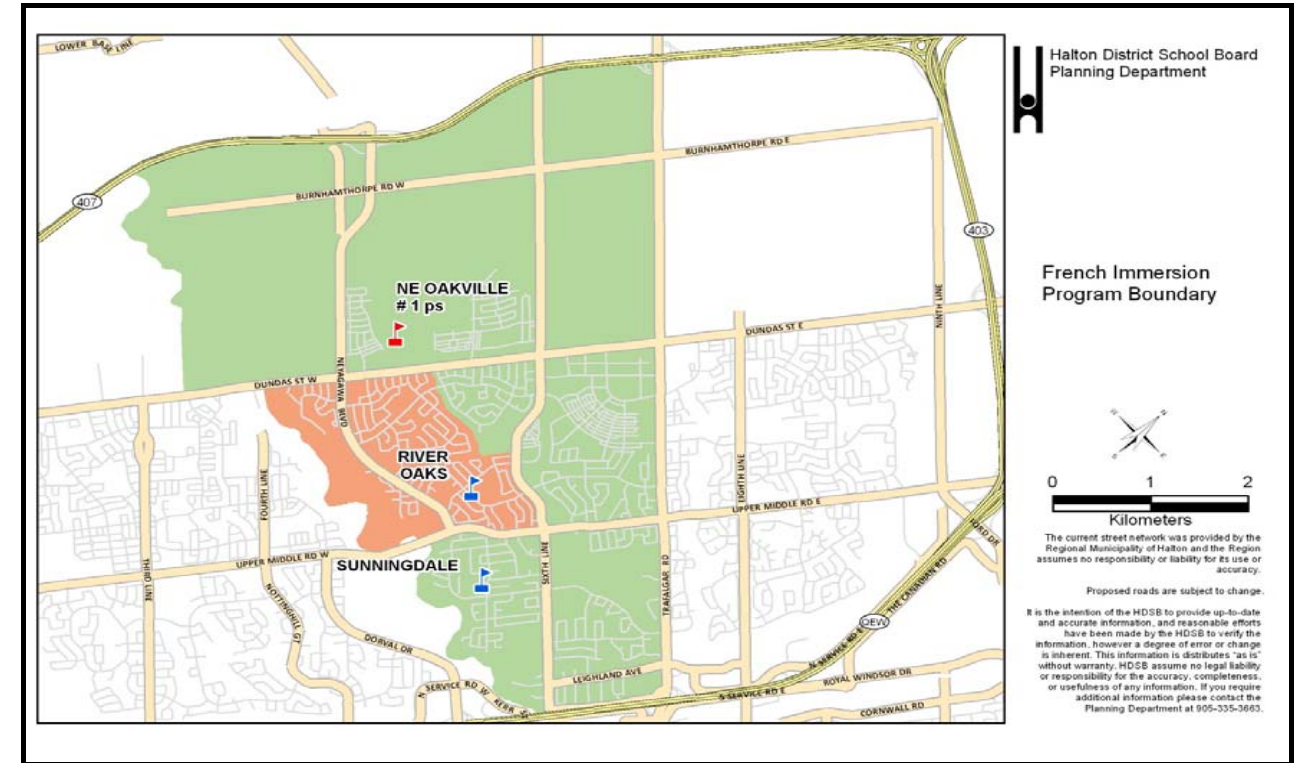


Scenario 9a



Scenario 9a



	Program	OTG	Port	Total	2014	2015	2016	2017	2018	2019	2020	2021	2022	2023	2024
River Oaks PS	ENG	636	12	912	731	471	398	364	337	309	283	261	247	244	241
	FI				0	114	151	187	222	257	292	287	291	288	286
	Total				731	585	549	551	559	566	575	548	538	532	527
	River Oaks Utilization				-95	51	87	85	77	70	61	88	98	104	109
	Percent Utilization				115%	92%	86%	87%	88%	89%	90%	86%	85%	84%	83%
Sunningdale PS	ENG	613	10	843	0	0	0	0	0	0	0	0	0	0	0
	FI				813	757	780	805	813	817	817	845	856	872	884
	Total				813	757	780	805	813	817	817	845	856	872	884
	Sunningdale Utilization				-200	-144	-167	-192	-200	-204	-204	-232	-243	-259	-271
	Percent Utilization				133%	123%	127%	131%	133%	133%	133%	138%	140%	142%	144%
N of Dundas (between Neyagawa & Sixth Line)	ENG	-	-	-	-	396	534	579	638	676	760	887	972	1037	1106
	FI				-	0	0	0	0	0	0	0	0	0	0
	Sub-Total				0	396	534	579	638	676	760	887	972	1037	1106
N of Dundas (between Sixth Line & Trafalgar)	ENG	-	-	-	-	0	64	141	233	339	448	537	609	678	745
	FI				-	0	0	0	0	0	0	0	0	0	0
	Sub-Total				0	0	64	141	233	339	448	537	609	678	745
N of Dundas (east of Trafalgar)	ENG	-	-	-	-	0	0	0	12	74	153	233	334	441	557
	FI				-	0	0	0	0	0	0	0	0	0	0
	Sub-Total				0	0	0	0	12	74	153	233	334	441	557
N of Dundas (west of Neyagawa)	ENG	-	-	-	-	0	0	0	0	0	0	0	0	0	0
	FI				-	0	0	0	0	0	0	0	0	0	0
	Sub-Total				0	0	0	0	0	0	0	0	0	0	0
NE Oakville #1 ps	ENG	776	12	1052	-	396	598	720	883	1089	1361	1657	1915	2156	2408
	FI				-	0	0	0	0	0	0	0	0	0	0
	Total				0	396	598	720	883	1089	1361	1657	1915	2156	2408
	NE Oakville #1 Utilization				0	380	178	56	-107	-313	-585	-881	-1139	-1380	-1632
	Percent Utilization				0%	51%	77%	93%	114%	140%	175%	214%	247%	278%	310%
Study Total		2025	34	2807	1544	1738	1927	2076	2255	2472	2753	3050	3309	3560	3819

River Oaks PS is a JK-8 ENG school; River Oaks PS will open with a 1-3 FI program September 2015; grade 4 FI will be added September 2016; grade 5 FI will be added September 2017; grade 6 FI will be added September 2018; grade 7 FI will be added September 2019; grade 8 FI will be added September 2020
 There is no change to the English boundary JK-8 south of Dundas Street West
 The French Immersion boundary 1-8 will be the same as the current English boundary

Sunningdale PS is a 1-8 FI school
 French Immersion boundary 1-8 south of Dundas Street West has changed with the creation of the River Oaks FI boundary.
 French Immersion boundary 1-8 includes area north of Dundas Street West:

- East: Trafalgar Road
- West: 16 Mile Creek
- North: Highway 407
- South: Dundas Street West

NE Oakville #1 ps opens September 2015 as a JK-7 ENG school; grade 8 ENG will be added September 2016
 English boundary JK-8 is:

- East: Ninth Line
- West: 16 Mile Creek
- North: Highway 407
- South: Dundas Street West