



Halton District School Board

Report Number: 15012

Date: January 28, 2015

FOR DECISION

TO: The Chair and Members of the
Halton District School Board

FROM: D. Euale, Director of Education
J. Hunt Gibbons, Superintendent of Education

RE: Establishment of School Boundaries – NE Oakville #1 ps

Warrant

The NE Oakville #1 boundary review was undertaken as a result of the development and construction of the NE Oakville #1 public school. In the 2014 Long Term Accommodation Plan (LTAP), the Board identified the opening of a new elementary school in Oakville (ERA #118) for September 2015. The LTAP provides the opportunity to identify the school boundary study initiatives that are to be undertaken as a result of ongoing capital initiatives, and to address accommodation pressures due to new residential development, changing demographics, and program pressures.

The following motion was unanimously approved by the Board on October 15, 2014:

M14-0236 A. Harvey Hope / D. Bower

Be it resolved that the Halton District School Board direct staff to undertake a school boundary review for the new NE Oakville #1 public school with an expected completion date of no later than February 2015.

Carried Unanimously.

RECOMMENDATIONS

Be it resolved that the Halton District School Board establish the school boundaries for the new NE Oakville #1 public school and adjust the boundaries for River Oaks PS and Sunningdale PS as outlined in Scenario 10c and detailed in Report 15012, effective September 2015.

Background

The procedure followed for the boundary review is described in the Halton District School Board Administrative Procedure: *School Boundary Reviews* (September 2010). A Boundary Review Steering Committee (BRSC) first met on November 6, 2014 and continued with meetings until January 27, 2015.

The BRSC identified River Oaks PS and Sunningdale PS as schools that may be potentially impacted. Therefore, these schools were included in the boundary review. The School Councils for these schools were asked to identify parent representatives to serve on the Boundary Review Committee (BRC).

- | | |
|---|---------------|
| • River Oaks PS | 2 parent reps |
| • Sunningdale PS | 2 parent reps |
| • ERA 118 Residents in English Program at River Oaks PS | 2 parent reps |
| • ERA 118 Residents in FI Program at Sunningdale PS | 2 parent reps |

A Public Information Evening was held at the north campus of White Oaks Secondary School on November 17, 2014. The purpose of the open house was to present the floor and site plans for the new school, as well as detail the process for the boundary review. An ad was placed in Oakville Beaver and communicated to homes via Home Notification email. A copy of the news release was also posted on the Board website. Approximately 300 people attended the meeting.

The BRC had six meetings in the time period between November 25, 2014 and January 20, 2015. Some of the data that was examined by the BRC included:

- Enrolment data, on the ground capacity (OTG), % utilization, portable capacity;
- Information on elementary school programs, viable programs, walking maps for each school, etc.

The BRC used the criteria as described in the HDSB Administrative Procedure: *School Boundary Reviews*. The BRC initially reviewed 6 scenarios, as developed by the Boundary Review Steering Committee. During the following weeks, numerous other scenarios were generated and assessed as per the established criteria. A total of 22 scenarios were considered by the BRC.

The BRC used the criteria to reduce the number of viable scenarios. The BRC prioritized the following as the most important in assessing the impact and effectiveness of the boundary options/scenarios:

- *Stable, long-term boundaries*
- *Balance of overall enrolment in each school in the review area to maximize student access to programs, resources, and extra-curriculars with particular emphasis on reducing current enrolment pressures at Sunningdale and ensuring sustainability at River Oaks.*
- *Proximity to schools (safe school routes, natural boundaries)*
- *Keeping cohorts and families together*

Throughout the process, a Question and Answer posting area was maintained on the Board Website. These questions were generated both from discussion at the BRC meetings, as well as questions that were raised directly with board staff (e.g., email, website). All meeting minutes, slide presentations used at meetings, and the various versions of the scenarios developed were posted on the website.

Scenarios 9a, 10, 11a, and 12 were selected to be shared at the Public Information Meeting held on January 8, 2015 at White Oaks Secondary School. At this meeting, staff and school representatives of the BRC shared the recommended scenarios; information on the process used, their perspectives on the process, and explained the consultation process which included the opportunity to submit feedback. In total, approximately 95 community members attended the meeting.

In total 81 submissions were received from the online feedback process and identified the following themes:

- Grandfathering of students/dividing families a concern for many
- Students moving to/from schools across Dundas Street a concern for many
- Multiple requests to re-consider Scenario 5 (Dundas St as boundary)
- Support for scenario 11a (dual track at both River Oaks PS and NE Oakville#1ps)
- Support against any scenario showing dual track at River Oaks
- Support for NE Oakville#1ps being dual track

The BRC met following the Public Information Meeting to review the scenarios in light of the public feedback. Despite a great deal of support from the public input to resurrect Scenario #5, the BRC decided not to as Scenario 5 did not provide sufficient accommodation relief to Sunningdale. Instead, the BRC requested amendments to Scenario 10 in order to explore the varying impacts of a southern border for NE Oakville#1ps of below Dundas Street.

At the final meeting of the BRC, the BRSC presented the BRC with two variations of Scenario 10 (10a and 10b). In addition, Scenario 5a (a variation of Scenario 5) was also provided as the BRSC felt that the public feedback warranted another look at this option. These scenarios, as well as scenarios remaining from the previous meeting (9a, 11b, and 12) were then discussed in relation to the criteria.

Throughout the process, the BRC worked together to represent the views and perspectives of their communities and to work toward recommendations to the BRSC that would best ensure a sustainable, viable school at all affected sites involved in the study.

The BRC reached consensus that scenarios 11b, 10a, and 5a best met the core criteria as established by the BRC; best responded to the consultation feedback; and best ensured sustainable and viable schools in the study area. As such, the BRC sent these three scenarios to the BRSC for consideration, along with commentary with respect to the strengths, weaknesses and important issues related to each of these scenarios.

Description of the Final 3 Scenarios (11b, 10a, 5a) Submitted by the BRC

Appendix A

Scenario 11b

Scenario 11b shows a dual track school at NE Oakville #1 ps with a JK-7 English program and grade 1-7 French Immersion program implementation in Sept 2015. The southern boundary is Dundas St. for both programs while the east boundary for FI is Trafalgar Rd and Ninth Line for English. River Oaks PS becomes a dual track school with a grade 1-7 FI implementation for Sept 2015; the boundaries of River Oaks are the same for both English and FI. Sunningdale PS remains single track FI but its southern boundary changes with the creation of the River Oaks PS FI boundary.

Scenario 10a

Scenario 10a shows a dual track school at NE Oakville #1ps with a JK-7 English program and grade 1-7 French Immersion program implementation in September 2015. The FI boundary includes a 'dip' below Dundas St (down to River Glen Dr. between 16 Mile Creek and Munn's Creek). River Oaks PS remains an English program school and its boundaries are extended to include the area above Dundas Street east of Sixth Line. Sunningdale PS remains single track FI and its northern boundary changes with the creation of the "dip" and it holds FI students north of Dundas St, between Sixth Line and Trafalgar Rd.

Scenario 5a:

Scenario 5a shows a dual track school at NE Oakville #1ps with a JK-7 English program and grade 1-7 French Immersion program implementation in September 2015. The FI and Eng boundary is Dundas St. to the south and Trafalgar Rd. to the east. River Oaks PS remains an English program school, maintaining its current boundaries and becomes a holding school for English students moving into new homes above Dundas St and east of Trafalgar Rd. Sunningdale PS remains a single track FI school whose boundaries below Dundas St do not change.

BRSC Revisions and Recommendation

The BRSC carefully studied the BRC recommendations and revisited the process and rationale for the recommended scenarios.

NE Oakville #1 ps was approved to accommodate the growth and enrolment resulting from the new construction north of Dundas Street. However, its approval was also contingent on the balancing of enrolment in existing schools in the immediate area. Balancing enrolment in the area requires reducing enrolment at Sunningdale PS and ensuring viable numbers at River Oaks PS. This can be achieved by creating a dual track program at NE Oakville #1ps and at River Oaks PS or by including a south of Dundas St FI boundary for NE Oakville #1ps.

Creating a dual track school at River Oaks PS, in addition to NE Oakville#1ps, was considered. In addition to the grades 1-7 FI implementation detailed in Scenario 11b, the BRSC also examined another variation (11c) and a grade 1 FI implementation at River Oaks PS starting in September 2015 (*Appendix B*). The creation of dual track programming at River Oaks PS does meet the boundary review criteria as it balances enrolment between the three schools; provides proximity to schools using natural boundaries; minimizes transportation costs; keeps cohorts together, and determines long term stable boundaries. However, recent experience in Oakville tells us that in a community such as River Oaks, the popularity of the French Immersion program may cause very limited enrolment in the core English program, thus eventually removing choice for this neighbourhood. Thus Scenario 11b or 11c, and the creation of dual track at River Oaks PS is not recommended at this point in time unless the Board considers capping or a similar strategy to ensure viable programming and choice for all families.

Scenario 5a is also not recommended. This scenario provides insufficient accommodation relief to the enrollment pressures at Sunningdale PS and also results in a long term viability problem for River Oaks PS.

The BRSC recommended Scenario 10c to the Director since it met the criteria with optimal balance of enrolment and viability of program for all the affected schools in the study area. As well, the BRSC felt that this scenario was one that:


- would best meet the core criteria as established by the BRC;
- would best respond to the consultation feedback; and,
- would ensure sustainable and viable schools in the study area.


Scenario 10c – Rationale for Recommendation

Scenario 10c (*Appendix C*) is being recommended since it addresses most of the criteria identified during the boundary review process. This is a slight variation on Scenario 10a put forth by the BRC and BRSC.

NE Oakville #1 ps is dual track and maintains a grades 1-7 program implementation for both tracks effective September 2015. The “dip” in the form of a southern boundary for the new school remains River Glen Blvd. between 16 Mile Creek and Munn’s Creek. Sunningdale PS remains single track FI and its northern boundary changes with the creation of the “dip”. In this variation, however, Sunningdale PS does not hold any students who live north of Dundas St. River Oaks PS does, however, hold English students both west and east of the new school catchment area; specifically those students moving into the area between Neyagawa Blvd and 16 Mile Creek to the west of NE Oakville #1 ps and those students moving into the area between Sixth Line and Trafalgar Rd to the east of the new school. Increasing the River Oaks PS catchment area above Dundas St. ensures that River Oaks PS maintains viable numbers in the longer term. This solution minimizes school moves for people living south of Dundas St, provides adequate relief to accommodation pressures at Sunningdale PS, while at the same time ensures the viability of River Oaks by including a holding area north of Dundas St.

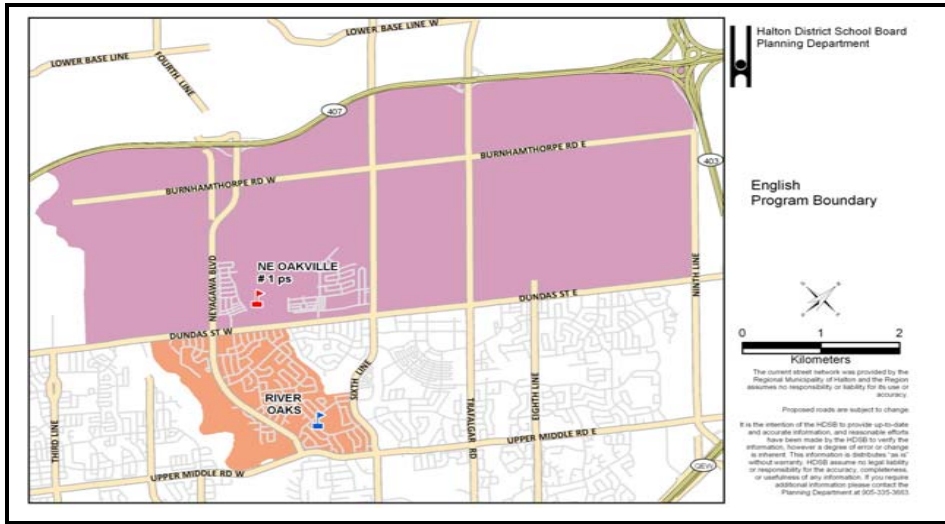
Respectfully submitted,


Julie Hunt Gibbons
Superintendent of Education

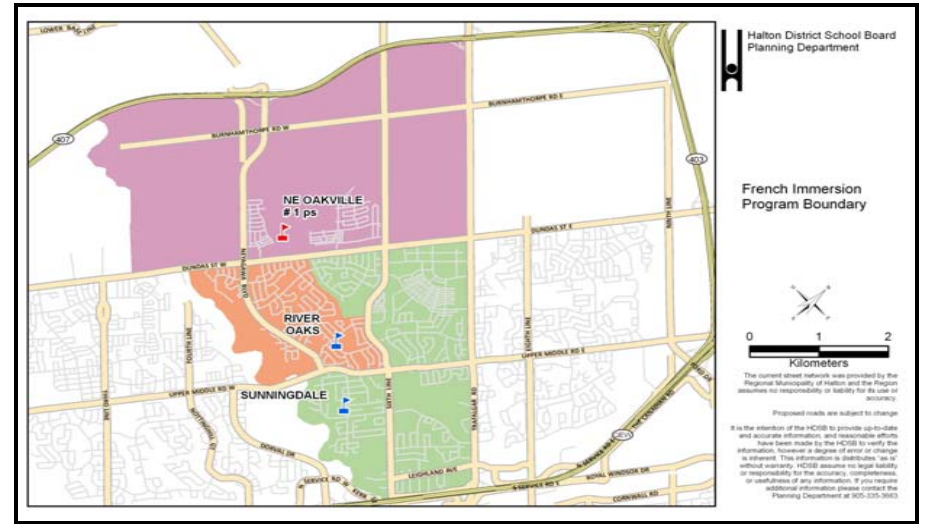

David Euale
Director of Education

APPENDIX A

Scenario 11b



Scenario 11b



	Program	OTG	Port	Total	2014	2015	2016	2017	2018	2019	2020	2021	2022	2023	2024
River Oaks PS	ENG	636	12	912	731	471	398	364	337	309	283	261	247	244	241
	FI				0	227	262	273	276	281	292	287	291	288	286
	Total				731	698	660	637	613	590	575	548	538	532	527
	River Oaks Utilization	-95	-62	-24	-1	23	46	61	88	98	104	109			
Percent Utilization	115%	110%	104%	100%	96%	93%	90%	86%	85%	84%	83%				
Sunningdale PS	ENG	613	10	843	0	0	0	0	0	0	0	0	0	0	0
	FI				813	506	491	520	537	544	546	544	543	542	538
	Total				813	506	491	520	537	544	546	544	543	542	538
	Sunningdale Utilization	-200	107	122	93	76	69	67	69	70	71	75			
Percent Utilization	133%	83%	80%	85%	88%	89%	89%	89%	89%	88%	88%				
N of Dundas (between Neyagawa & Sixth Line)	ENG	-	-	-	-	379	502	533	579	604	675	794	868	932	1003
	FI	-	-	-	-	155	202	226	251	275	299	326	341	348	354
	Sub-Total	0	534	704	759	830	879	974	1120	1209	1280	1357			
N of Dundas (between Sixth Line & Trafalgar)	ENG	-	-	-	-	0	64	141	233	339	448	537	609	678	745
	FI	-	-	-	-	0	8	19	30	46	57	68	76	87	95
	Sub-Total	0	0	72	160	263	385	505	605	685	765	840			
N of Dundas (east of Trafalgar)	ENG	-	-	-	-	0	0	0	12	74	153	233	334	441	557
	FI	-	-	-	-	0	0	0	0	0	0	0	0	0	0
	Sub-Total	0	0	0	0	12	74	153	233	334	441	557			
N of Dundas (west of Neyagawa)	ENG	-	-	-	-	0	0	0	0	0	0	0	0	0	0
	FI	-	-	-	-	0	0	0	0	0	0	0	0	0	0
	Sub-Total	0	0	0	0	0	0	0	0	0	0	0	0	0	0
NE Oakville #1 ps	ENG	776	12	1052	-	379	566	674	824	1017	1276	1564	1811	2051	2305
	FI				-	155	210	245	281	321	356	394	417	435	449
	Total				0	534	776	919	1105	1338	1632	1958	2228	2486	2754
	NE Oakville #1 Utilization	0	242	0	-143	-329	-562	-856	-1182	-1452	-1710	-1978			
Percent Utilization	0%	69%	100%	118%	142%	172%	210%	252%	287%	320%	355%				
Study Total		2025	34	2807	1544	1738	1927	2076	2255	2472	2753	3050	3309	3560	3819

River Oaks PS is a JK-8 ENG school; River Oaks PS will open with a grade 1-7 FI program September 2015; grade 8 FI will be added September 2016
 There is no change to the English boundary JK-8
 The French Immersion boundary 1-8 will be the same as the current English boundary

Sunningdale PS is a 1-8 FI school
 French Immersion boundary 1-8 south of Dundas Street West has changed with the creation of the River Oaks FI boundary.

NE Oakville #1 ps opens September 2015 as a JK-7 ENG and 1-7 FI school; grade 8 ENG and grade 8 FI will be added September 2016

English boundary JK-8 is:

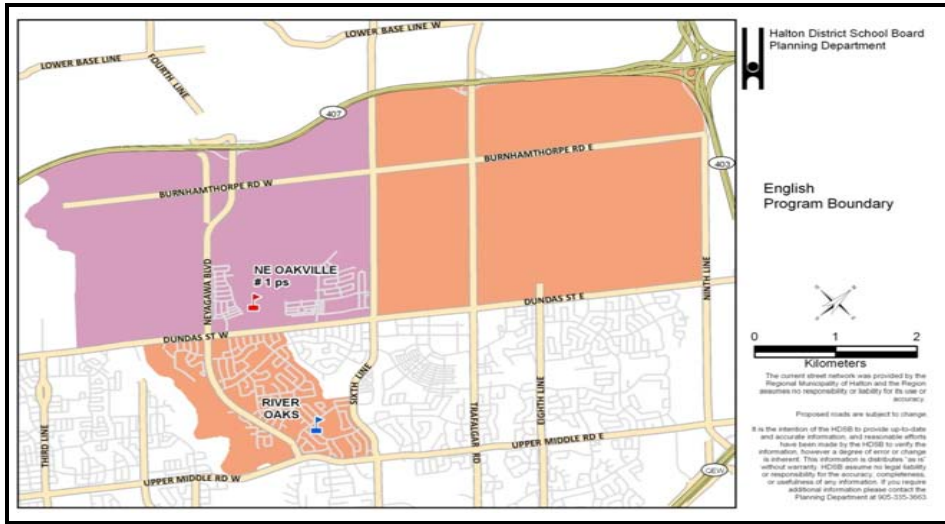
- East: Ninth Line
- West: 16 Mile Creek
- North: Highway 407
- South: Dundas Street West

French Immersion boundary 1-8 is:

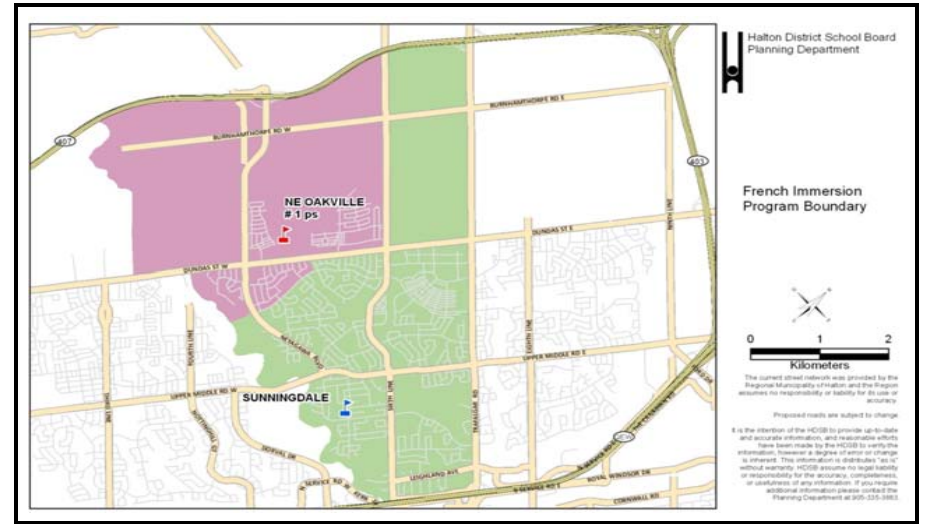
- East: Trafalgar Road
- West: 16 Mile Creek
- North: Highway 407
- South: Dundas Street West

APPENDIX A

Scenario 10a



Scenario 10a



	Program	OTG	Port	Total	2014	2015	2016	2017	2018	2019	2020	2021	2022	2023	2024		
River Oaks PS	ENG	636	12	912	731	482	482	536	622	772	944	1100	1268	1440	1619		
	FI				0	0	0	0	0	0	0	0	0	0	0	0	0
	Total				731	482	482	536	622	772	944	1100	1268	1440	1619		
	River Oaks Utilization	-95	154	154	100	14	-136	-308	-464	-632	-804	-983					
	Percent Utilization	115%	76%	76%	84%	98%	121%	148%	173%	199%	226%	255%					
Sunningdale PS	ENG	613	10	843	0	0	0	0	0	0	0	0	0	0	0		
	FI				813	632	637	676	695	707	719	718	720	728	731		
	Total				813	632	637	676	695	707	719	718	720	728	731		
	Sunningdale Utilization	-200	-19	-24	-63	-82	-94	-106	-105	-107	-115	-118					
	Percent Utilization	133%	103%	104%	110%	113%	115%	117%	117%	117%	119%	119%					
N of Dundas (between Neyagawa & Sixth Line)	ENG	-	-	-	-	379	502	533	579	604	675	794	868	932	1003		
	FI	-	-	-	-	155	202	226	251	275	299	326	341	348	354		
	Sub-Total	0	534	704	759	830	879	974	1120	1209	1280	1357					
N of Dundas (between Sixth Line & Trafalgar)	ENG	-	-	-	-	0	0	0	0	0	0	0	0	0	0		
	FI	-	-	-	-	0	0	0	0	0	0	0	0	0	0		
	Sub-Total	0	0	0	0	0	0	0	0	0	0	0	0	0	0		
N of Dundas (east of Trafalgar)	ENG	-	-	-	-	0	0	0	0	0	0	0	0	0	0		
	FI	-	-	-	-	0	0	0	0	0	0	0	0	0	0		
	Sub-Total	0	0	0	0	0	0	0	0	0	0	0	0	0	0		
N of Dundas (west of Neyagawa)	ENG	-	-	-	-	0	0	0	0	0	0	0	0	0	0		
	FI	-	-	-	-	0	0	0	0	0	0	0	0	0	0		
	Sub-Total	0	0	0	0	0	0	0	0	0	0	0	0	0	0		
S of Dundas (down to River Glen Blvd between 16 Mile Creek & Munn's Creek)	ENG	-	-	-	-	0	0	0	0	0	0	0	0	0	0		
	FI	-	-	-	-	90	104	105	108	114	116	112	112	112	112		
	Sub-Total	0	90	104	105	108	114	116	112	112	112	112	112	112	112		
NE Oakville #1 ps	ENG	776	12	1052	-	379	502	533	579	604	675	794	868	932	1003		
	FI				-	245	306	331	359	389	415	438	453	460	466		
	Total				0	624	808	864	938	993	1090	1232	1321	1392	1469		
	NE Oakville #1 Utilization	0	152	-32	-88	-162	-217	-314	-456	-545	-616	-693					
	Percent Utilization	0%	80%	104%	111%	121%	128%	140%	159%	170%	179%	189%					
Study Total		2025	34	2807	1544	1738	1927	2076	2255	2472	2753	3050	3309	3560	3819		

River Oaks PS is a JK-8 ENG school
 English boundary JK-8 includes area north of Dundas Street West:

- East: Ninth Line
- West: Sixth Line
- North: Highway 407
- South: Dundas Street West

Sunningdale PS is a 1-8 FI school
 French Immersion boundary 1-8 includes area north of Dundas Street West:

- East: Trafalgar Road
- West: Sixth Line
- North: Highway 407
- South: Dundas Street West

NE Oakville #1 ps opens September 2015 as a JK-7 ENG and 1-7 FI school; grade 8 ENG and grade 8 FI will be added September 2016
 English boundary JK-8 and French Immersion boundary 1-8 is:

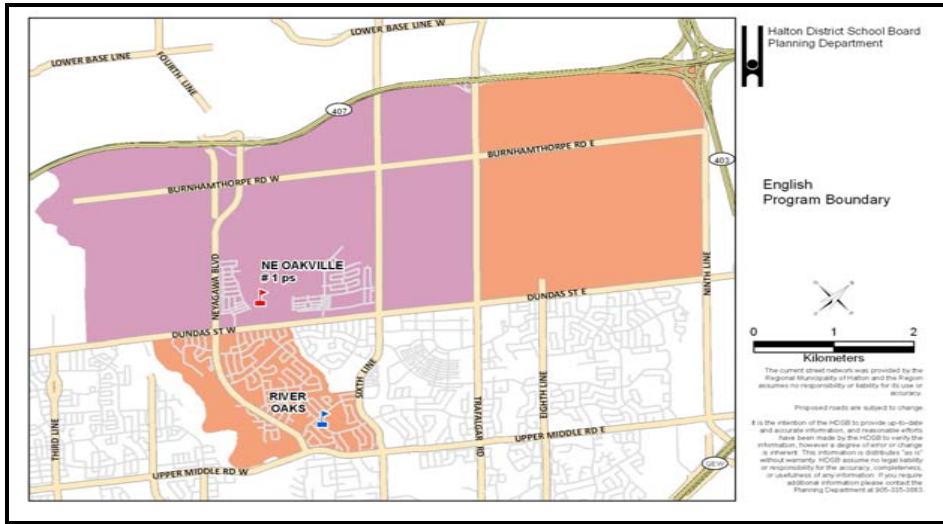
- East: Sixth Line
- West: 16 Mile Creek
- North: Highway 407
- South: Dundas Street West

French Immersion boundary 1-8 also includes an area south of Dundas Street West:

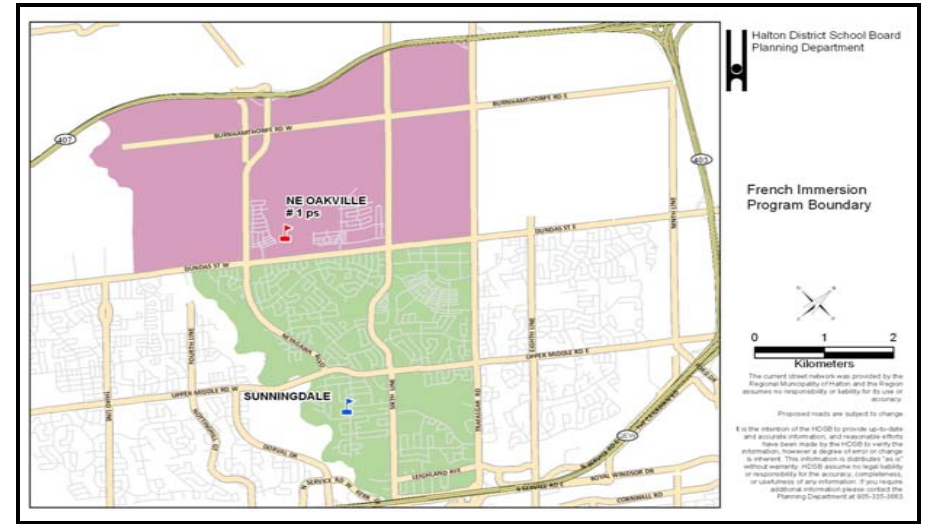
- East: Munn's Creek
- West: 16 Mile Creek
- North: Dundas Street West
- South: River Glen Blvd

APPENDIX A

Scenario 5a



Scenario 5a



	Program	OTG	Port	Total	2014	2015	2016	2017	2018	2019	2020	2021	2022	2023	2024
River Oaks PS	ENG	636	12	912	731	482	418	395	389	433	496	563	659	762	874
	FI				0	0	0	0	0	0	0	0	0	0	0
	Total				731	482	418	395	389	433	496	563	659	762	874
	River Oaks Utilization				-95	154	218	241	247	203	140	73	-23	-126	-238
Percent Utilization				115%	76%	66%	62%	61%	68%	78%	89%	104%	120%	137%	
Sunningdale PS	ENG	613	10	843	0	0	0	0	0	0	0	0	0	0	0
	FI				813	722	733	762	773	775	778	762	756	753	748
	Total				813	722	733	762	773	775	778	762	756	753	748
	Sunningdale Utilization				-200	-109	-120	-149	-160	-162	-165	-149	-143	-140	-135
Percent Utilization				133%	118%	120%	124%	126%	126%	127%	124%	123%	123%	122%	
N of Dundas (between Neyagawa & Sixth Line)	ENG	-	-	-	-	379	502	533	579	604	675	794	868	932	1003
	FI	-	-	-	-	155	202	226	251	275	299	326	341	348	354
	Sub-Total				0	534	704	759	830	879	974	1120	1209	1280	1357
N of Dundas (between Sixth Line & Trafalgar)	ENG	-	-	-	-	0	64	141	233	339	448	537	609	678	745
	FI	-	-	-	-	0	8	19	30	46	57	68	76	87	95
	Sub-Total				0	0	72	160	263	385	505	605	685	765	840
N of Dundas (east of Trafalgar)	ENG	-	-	-	-	0	0	0	0	0	0	0	0	0	0
	FI	-	-	-	-	0	0	0	0	0	0	0	0	0	0
	Sub-Total				0	0	0	0	0	0	0	0	0	0	0
N of Dundas (west of Neyagawa)	ENG	-	-	-	-	0	0	0	0	0	0	0	0	0	0
	FI	-	-	-	-	0	0	0	0	0	0	0	0	0	0
	Sub-Total				0	0	0	0	0	0	0	0	0	0	0
NE Oakville #1 ps	ENG	776	12	1052	-	379	566	674	812	943	1123	1331	1477	1610	1748
	FI				-	155	210	245	281	321	356	394	417	435	449
	Total				0	534	776	919	1093	1264	1479	1725	1894	2045	2197
	NE Oakville #1 Utilization				0	242	0	-143	-317	-488	-703	-949	-1118	-1269	-1421
Percent Utilization				0%	69%	100%	118%	141%	163%	191%	222%	244%	264%	283%	
Study Total		2025	34	2807	1544	1738	1927	2076	2255	2472	2753	3050	3309	3560	3819

River Oaks PS is a JK-8 ENG school
 English boundary JK-8 includes area north of Dundas Street West:

- East: Ninth Line
- West: Trafalgar Road
- North: Highway 407
- South: Dundas Street West

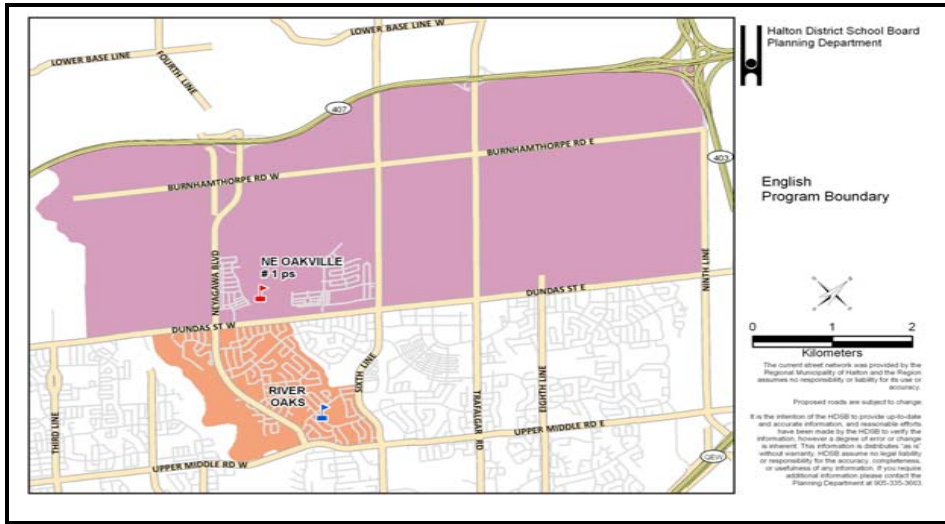
Sunningdale PS is a 1-8 FI school
 French Immersion boundary 1-8 south of Dundas Street West has not changed.

NE Oakville #1 ps opens September 2015 as a JK-7 ENG and 1-7 FI school; grade 8 ENG and FI will be added September 2016
 English boundary JK-8 and French Immersion boundary 1-8 is:

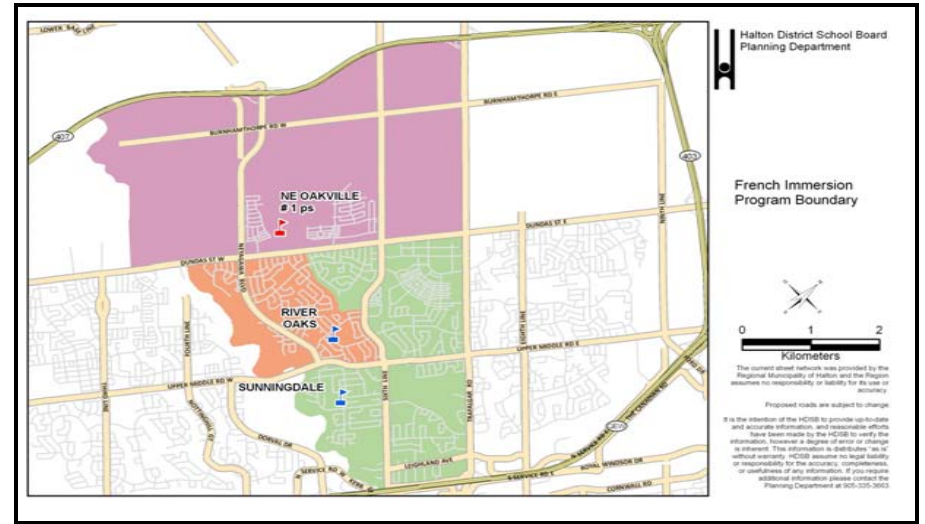
- East: Trafalgar Road
- West: 16 Mile Creek
- North: Highway 407
- South: Dundas Street West

APPENDIX B

Scenario 11c



Scenario 11c



	Program	OTG	Port	Total	2014	2015	2016	2017	2018	2019	2020	2021	2022	2023	2024
River Oaks PS	ENG	636	12	912	731	471	398	364	337	309	283	261	247	244	241
	FI				0	42	80	117	153	190	226	259	291	288	286
	Total				731	513	478	481	490	499	509	520	538	532	527
	River Oaks Utilization	-95	123	158	155	146	137	127	116	98	104	109			
Percent Utilization	115%	81%	75%	76%	77%	78%	80%	82%	85%	84%	83%				
Sunningdale PS	ENG	613	10	843	0	0	0	0	0	0	0	0	0	0	0
	FI				813	691	673	676	660	635	612	572	543	542	538
	Total				813	691	673	676	660	635	612	572	543	542	538
	Sunningdale Utilization	-200	-78	-60	-63	-47	-22	1	41	70	71	75			
Percent Utilization	133%	113%	110%	110%	108%	104%	100%	93%	89%	88%	88%				
N of Dundas (between Neyagawa & Sixth Line)	ENG	-	-	-	-	379	502	533	579	604	675	794	868	932	1003
	FI				-	155	202	226	251	275	299	326	341	348	354
	Sub-Total				0	534	704	759	830	879	974	1120	1209	1280	1357
N of Dundas (between Sixth Line & Trafalgar)	ENG	-	-	-	-	0	64	141	233	339	448	537	609	678	745
	FI				-	0	8	19	30	46	57	68	76	87	95
	Sub-Total				0	0	72	160	263	385	505	605	685	765	840
N of Dundas (east of Trafalgar)	ENG	-	-	-	-	0	0	0	12	74	153	233	334	441	557
	FI				-	0	0	0	0	0	0	0	0	0	0
	Sub-Total				0	0	0	0	12	74	153	233	334	441	557
N of Dundas (west of Neyagawa)	ENG	-	-	-	-	0	0	0	0	0	0	0	0	0	0
	FI				-	0	0	0	0	0	0	0	0	0	0
	Sub-Total				0	0	0	0	0	0	0	0	0	0	0
NE Oakville #1 ps	ENG	776	12	1052	-	379	566	674	824	1017	1276	1564	1811	2051	2305
	FI				-	155	210	245	281	321	356	394	417	435	449
	Total				0	534	776	919	1105	1338	1632	1958	2228	2486	2754
	NE Oakville #1 Utilization	0	242	0	-143	-329	-562	-856	-1182	-1452	-1710	-1978			
Percent Utilization	0%	69%	100%	118%	142%	172%	210%	252%	287%	320%	355%				
Study Total		2025	34	2807	1544	1738	1927	2076	2255	2472	2753	3050	3309	3560	3819

River Oaks PS is a JK-8 ENG school; River Oaks PS will open with a grade 1 FI program September 2015; grade 2 FI will be added September 2016; grade 3 FI will be added September 2017; grade 4 FI will be added September 2018; grade 5 FI will be added September 2019; grade 6 FI will be added September 2020; grade 7 FI will be added September 2021; grade 8 FI will be added September 2022

*There is no change to the English boundary JK-8
The French Immersion boundary 1-8 will be the same as the current English boundary*

Sunningdale PS is a 1-8 FI school
French Immersion boundary 1-8 south of Dundas Street West has changed with the creation of the River Oaks FI boundary.

NE Oakville #1 ps opens September 2015 as a JK-7 ENG and 1-7 FI school; grade 8 ENG and grade 8 FI will be added September 2016

English boundary JK-8 is:

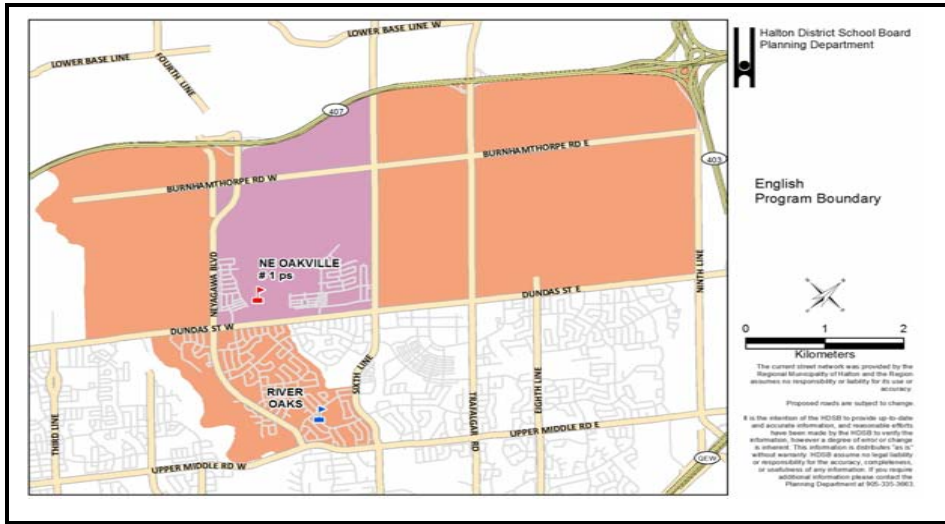
- East: Ninth Line
- West: 16 Mile Creek
- North: Highway 407
- South: Dundas Street West

French Immersion boundary 1-8 is:

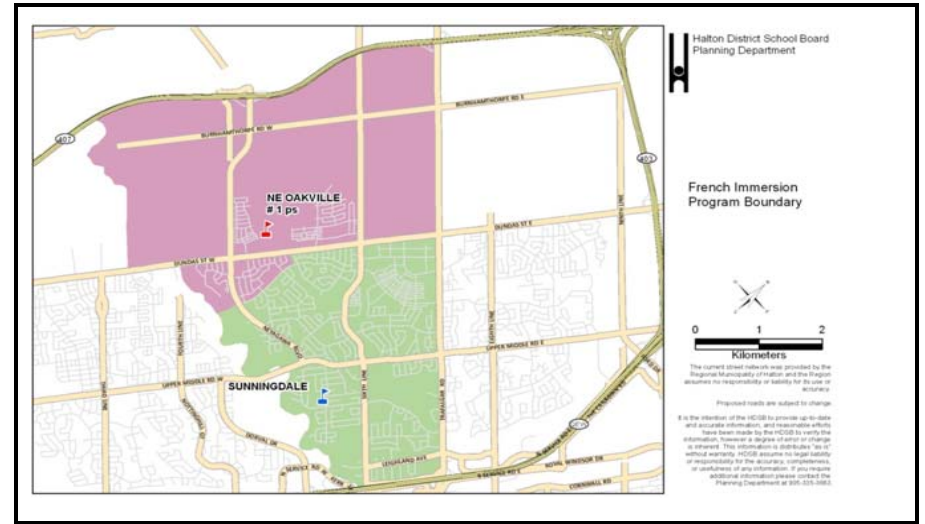
- East: Trafalgar Road
- West: 16 Mile Creek
- North: Highway 407
- South: Dundas Street West

APPENDIX C

Scenario 10c



Scenario 10c



	Program	OTG	Port	Total	2014	2015	2016	2017	2018	2019	2020	2021	2022	2023	2024		
River Oaks PS	ENG	636	12	912	731	482	482	536	622	772	944	1100	1268	1440	1619		
	FI				0	0	0	0	0	0	0	0	0	0	0	0	0
	Total				731	482	482	536	622	772	944	1100	1268	1440	1619		
	River Oaks Utilization	-95	154	154	100	14	-136	-308	-464	-632	-804	-983					
	Percent Utilization				115%	76%	76%	84%	98%	121%	148%	173%	199%	226%	255%		
Sunningdale PS	ENG	613	10	843	0	0	0	0	0	0	0	0	0	0	0		
	FI				813	632	629	657	665	661	662	650	644	641	636		
	Total				813	632	629	657	665	661	662	650	644	641	636		
	Sunningdale Utilization	-200	-19	-16	-44	-52	-48	-49	-37	-31	-28	-23					
	Percent Utilization	133%	103%	103%	107%	108%	108%	108%	106%	105%	105%	104%					
N of Dundas (between Neyagawa & Sixth Line)	ENG	-	-	-	-	379	502	533	579	604	675	794	868	932	1003		
	FI	-	-	-	-	155	202	226	251	275	299	326	341	348	354		
	Sub-Total	0	534	704	759	830	879	974	1120	1209	1280	1357					
N of Dundas (between Sixth Line & Trafalgar)	ENG	-	-	-	-	0	0	0	0	0	0	0	0	0	0		
	FI	-	-	-	-	0	0	0	0	0	0	0	0	0	0		
	Sub-Total	0	0	0	0	0	0	0	0	0	0	0	0	0	0		
N of Dundas (east of Trafalgar)	ENG	-	-	-	-	0	0	0	0	0	0	0	0	0	0		
	FI	-	-	-	-	0	8	19	30	46	57	68	76	87	95		
	Sub-Total	0	0	8	19	30	46	57	68	76	87	95					
N of Dundas (west of Neyagawa)	ENG	-	-	-	-	0	0	0	0	0	0	0	0	0	0		
	FI	-	-	-	-	0	0	0	0	0	0	0	0	0	0		
	Sub-Total	0	0	0	0	0	0	0	0	0	0	0	0	0	0		
S of Dundas (down to River Glen Blvd between 16 Mile Creek & Munn's Creek)	ENG	-	-	-	-	0	0	0	0	0	0	0	0	0	0		
	FI	-	-	-	-	90	104	105	108	114	116	112	112	112	112		
	Sub-Total	0	90	104	105	108	114	116	112	112	112	112	112	112			
NE Oakville #1 ps	ENG	776	12	1052	-	379	502	533	579	604	675	794	868	932	1003		
	FI				-	245	314	350	389	435	472	506	529	547	561		
	Total				0	624	816	883	968	1039	1147	1300	1397	1479	1564		
	NE Oakville #1 Utilization	0	152	-40	-107	-192	-263	-371	-524	-621	-703	-788					
	Percent Utilization	0%	80%	105%	114%	125%	134%	148%	168%	180%	191%	202%					
Study Total		2025	34	2807	1544	1738	1927	2076	2255	2472	2753	3050	3309	3560	3819		

River Oaks PS is a JK-8 ENG school

English boundary JK-8 includes areas north of Dundas Street West (2 parts):

Part 1

- East: Neyagawa Blvd
- West: 16 Mile Creek
- North: Highway 407
- South: Dundas Street West

Part 2

- East: Ninth Line
- West: Sixth Line
- North: Highway 407
- South: Dundas Street West

Sunningdale PS is a 1-8 FI school

French Immersion boundary 1-8 south of Dundas Street West has changed with the creation of the NE Oakville #1 FI boundary.

NE Oakville #1 ps opens September 2015 as a JK-7 ENG and 1-7 FI school; grade 8 ENG and grade 8 FI will be added September 2016

English boundary JK-8 is:

- East: Sixth Line
- West: Neyagawa Blvd
- North: Highway 407
- South: Dundas Street West

French Immersion boundary 1-8 is:

- East: Trafalgar Road
- West: 16 Mile Creek
- North: Highway 407
- South: Dundas Street West

French Immersion boundary 1-8 also includes an area south of Dundas Street West:

- East: Munn's Creek
- West: 16 Mile Creek
- North: Dundas Street West
- South: River Glen Blvd