

Program and Accommodation Review Burlington Secondary Schools

Director's Preliminary Report
October 5, 2016

Outline

- Policy Overview
- Long Term Accommodation Plan (LTAP)
- Conditions for Program and Accommodation Review (PAR)
- Objective of PAR
- Program and Accommodation Review Committee (PARC)
- Staff Recommended Option
- Capital Investments
- Process Timeline

Policy Overview

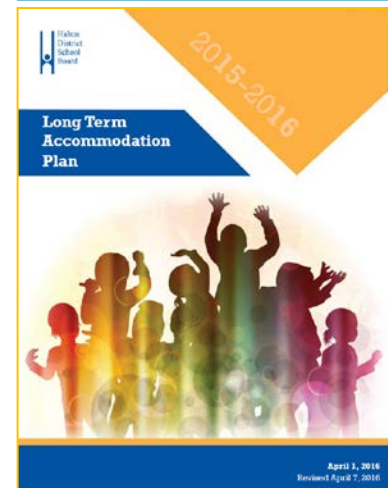
- March 2015:
Ministry released Guidelines for Community Planning and Partnerships and Pupil Accommodation Review
- October 2015:
Halton District School Board created a **Community Planning and Partnership Policy** to reflect new Ministry Guidelines
- February 2016:
Board **Program and Accommodation Review (PAR) Policy** updated to reflect changes in new Guidelines

Long Term Accommodation Plan

- The **Long Term Accommodation Plan (LTAP)** is an annually-reviewed planning tool that:
 - Provides enrolment projections;
 - Guides accommodation planning for a 10-year period.
- The LTAP also identifies accommodation pressures resulting from projected enrolments and proposes strategies to address them, including:
 - New schools and additions;
 - Open and operating schools that may have unused space; and,
 - Areas where schools may be candidates for consolidation or closure.

Long Term Accommodation Plan

- **2012-2013 Long Term Accommodation Plan (LTAP)** identified that a PAR will be required for all Burlington secondary schools due to low utilization.
- Every LTAP since 2012 has highlighted the need for a PAR for all Burlington secondary schools.
- The **2015-2016 Long Term Accommodation Plan (LTAP)**, approved by the Board of Trustees on May 4, 2016, highlighted concerns of low utilization and that consideration be given to undertake a PAR for all Burlington secondary schools once again.



Conditions for a PAR

- The Program and Accommodation Review policy requires **one of the following five conditions** to be met:
 - The school or group of schools has experienced or will experience declining enrolment where the On the Ground (OTG) utilization rate is below 65%;
 - Reorganization involving the school or group of schools could enhance program delivery and learning opportunities for students;
 - Under normal staffing allocation practices, it would be necessary to assign three or more grades to one class in one or more of the schools;
 - The current physical condition of the school(s) negatively impacts the optimum operation of the building(s) and program delivery;
 - In respect of one or more of the schools under consideration there are safety, accessibility and/or environmental concerns associated with the building, the school site or its locality.

Conditions for Burlington Secondary PAR

- **Two** of the five conditions have been met:
 - **The school or group of schools has experienced or will experience declining enrolment where the On the Ground (OTG) utilization rate is below 65%;**
 - **Reorganization involving the school or group of schools could enhance program delivery and learning opportunities for students;**
 - Under normal staffing allocation practices, it would be necessary to assign three or more grades to one class in one or more of the schools;
 - The current physical condition of the school(s) negatively impacts the optimum operation of the building(s) and program delivery;
 - In respect of one or more of the schools under consideration there are safety, accessibility and/or environmental concerns associated with the building, the school site or its locality.

Condition 1: OTG Utilization

- 629 available pupil places (80% utilization) North of QEW
- 1264 available pupil places (69% utilization) South of QEW/HWY 403

Oct 31, 2015 Data	Burlington	North of QEW	South of QEW/403
Enrolment	5382	2554	2828
OTG Capacity	7275	3183	4092
Available Pupil Places	1893	629	1264
Utilization	74%	80%	69%

Condition 1: OTG Utilization

Utilization rates*:

School	2010	2015	2020 (Projected)	2025 (Projected)
Aldershot HS	94%	78%	83%	73%
Burlington Central HS	82%	68%	68%	69%
Dr. Frank J. Hayden SS	N/A	118%	151%	141%
Lester B. Pearson HS	112%	65%	55%	50%
M.M. Robinson HS	87%	54%	47%	46%
Nelson HS	107%	74%	83%	79%
Robert Bateman HS	95%	60%	55%	50%

* Data for October 31 of stated year

Condition 1: OTG Utilization

- Underutilization has been a concern for Burlington secondary schools.
- Secondary schools in Burlington with lowest utilization (below 70%), with utilization for October 1, 2016:

School	Oct 31, 2015	Oct 1, 2016
Burlington Central HS	68%	69%
Lester B. Pearson HS	65%	61%
M.M. Robinson HS	54%	53%
Robert Bateman HS	60%	59%

Condition 2: Enhance Program Delivery

- **Small Secondary Schools, Large Secondary Schools Data Trends** presentation to the Committee of the Whole outlined the benefits of each school type.
- Small schools tend to have closer knit communities.
- Larger schools tend to offer more choices to students.
 - 3 of the Burlington high schools are considered “small schools”.
 - Aldershot HS, Burlington Central HS and Lester B. Pearson HS
 - Medium sized schools include Robert Bateman HS and M.M. Robinson with enrolments above 700 students.
 - The two large schools are Dr. Frank J. Hayden SS and Nelson HS with enrolments over 1000 students.

Objective of PAR

- Board committed to providing the best educational opportunities and learning environments for all students within the financial resources available.
- The Board is committed to the following principles:
 - Program and accommodation decisions to take into account the needs of all students in all schools in the affected community and the Board as a whole;
 - Affected communities will have an understanding of the process and the level of consultation to take place;
 - Processes for decision-making will be timely, inclusive, transparent and open;
 - In the students', community's or system's best interests, PARs may occur as a result of financial constraints, changes in curriculum, program demands, student enrolment, or other unforeseen factors.

Program and Accommodation Review Committee (PARC)

- **Responsibilities of PARC:**
 - To share information between HDSB and the communities.
 - To meet, review information, provide feedback from the community and to suggest alternate options.
- **PARC consists of:**
 - A trustee and superintendent from an area outside of Burlington;
 - From each school:
 - Principal or designate,
 - Two parents/guardians;
 - Once PARC constituted, invitation will be extended to a municipal councillor or delegate.
- Final decision(s) to be **made by the Board of Trustees.**

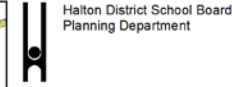
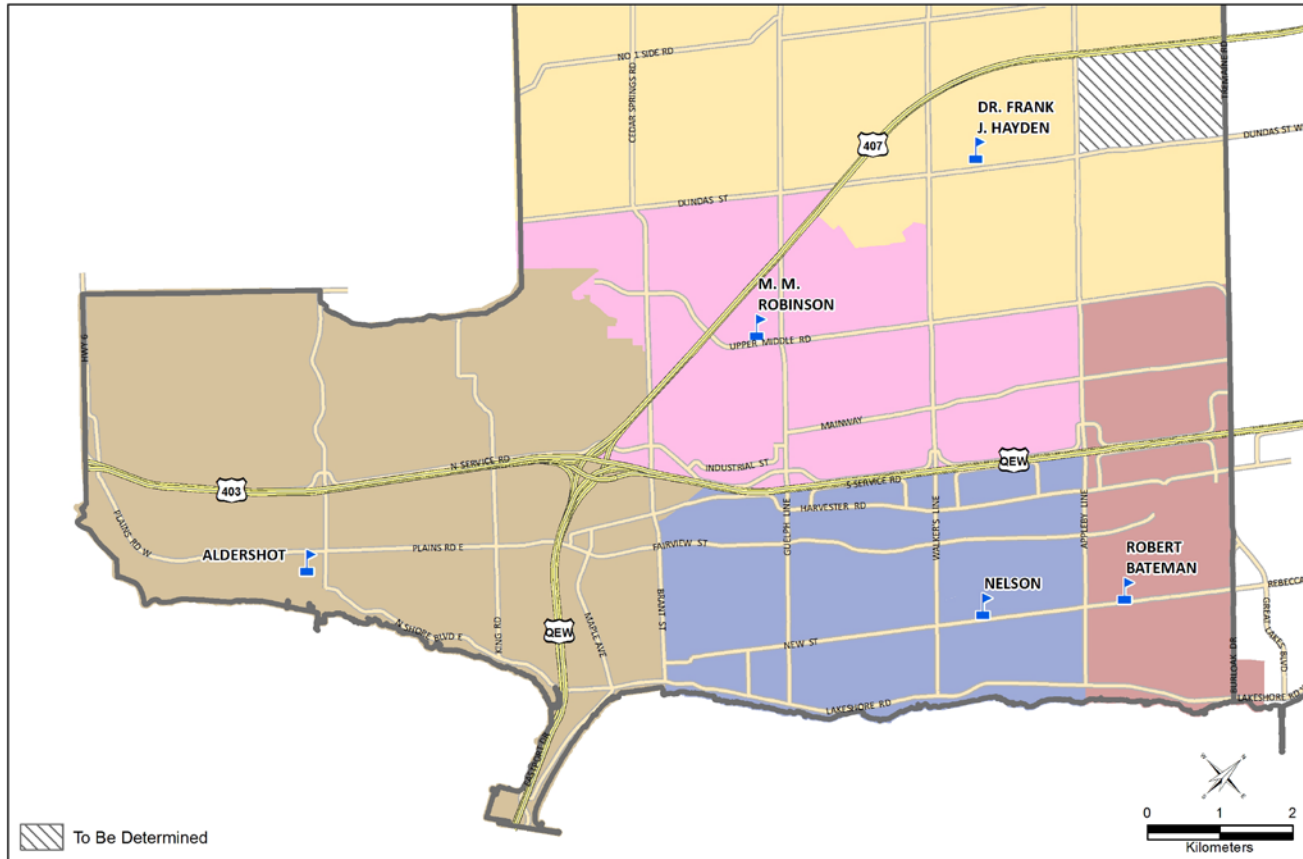
Staff Recommended Option

- Staff required to present a recommended option according to Board policy when more than one option is present.
- **Option 19** is presented to initiate discussion between staff and the PARC.
- Moreover, this Staff option is to be used to start the PAR process, initiate discussion and input from the community.
- This staff option is **not the final Board decision.**

Option 19: Changes and Impact

Boundary/program change	Impact
<p>Lester B. Pearson HS closes and French Immersion Program from Dr. Frank J. Hayden SS redirected to M.M. Robinson HS.</p>	<ul style="list-style-type: none"> Increases enrolments and utilization at M.M. Robinson HS. Provides accommodation relief to Dr. Frank J. Hayden SS.
<p>Burlington Central HS closes.</p>	<ul style="list-style-type: none"> Increases enrolments and utilization at Aldershot HS.
<p>Add French Immersion program to Robert Bateman HS and expand catchment.</p>	<ul style="list-style-type: none"> Increases enrolments and utilization at Robert Bateman HS. Provides accommodation relief to Dr. Frank J. Hayden SS.

Option 19: English Program Boundary



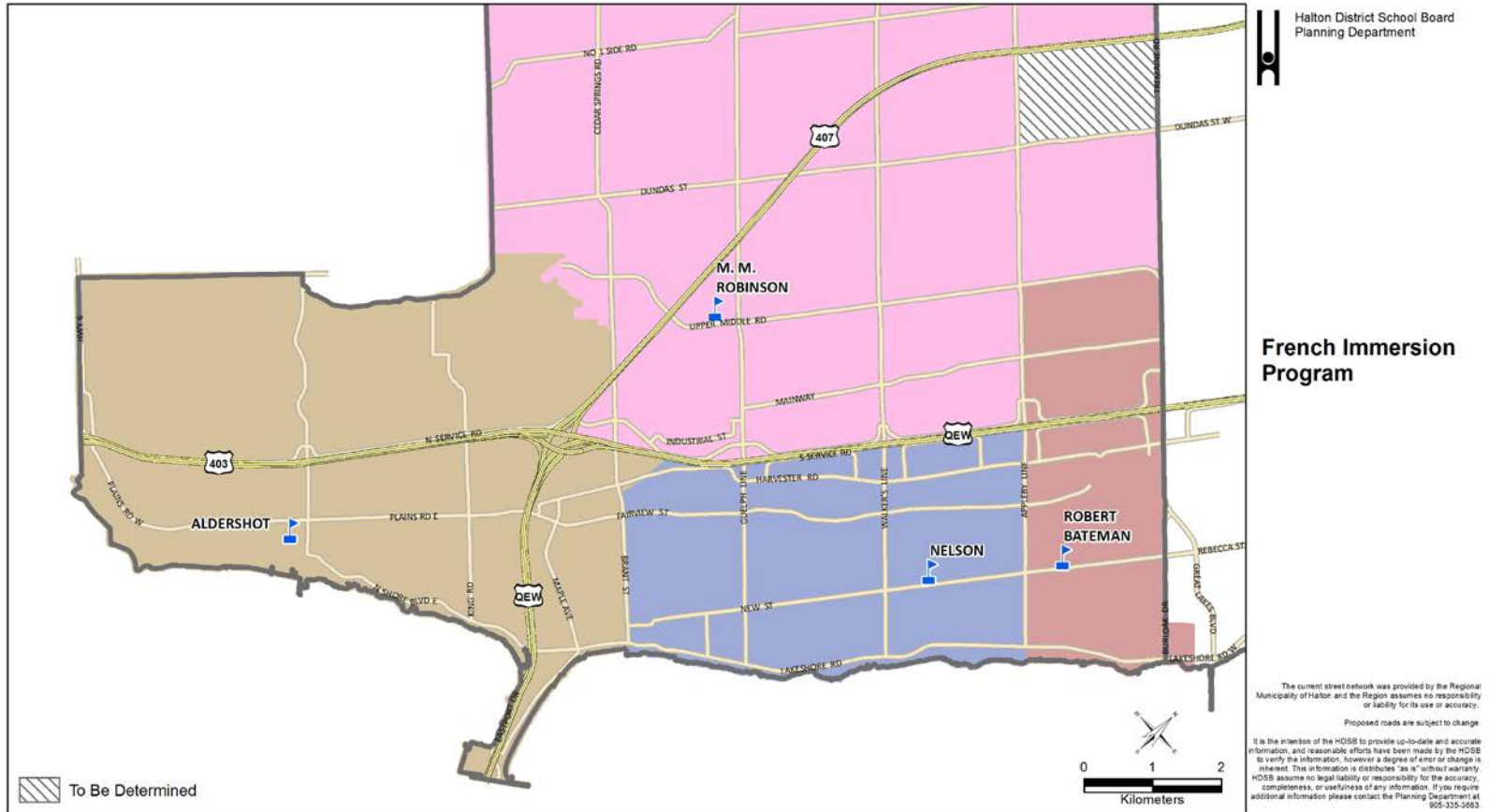
English Program Boundary

The current street network was provided by the Regional Municipality of Halton and the Region assumes no responsibility or liability for its use or accuracy.

Proposed roads are subject to change.

It is the intention of the HDSB to provide up-to-date and accurate information, and reasonable efforts have been made by the HDSB to verify the information, however a degree of error or change is inherent. This information is distributed as is "without warranty". HDSB assumes no legal liability or responsibility for the accuracy, completeness, or usefulness of any information. If you require additional information please contact the Planning Department at 905-335-3663.

Option 19: French Immersion Boundary



Capital Investments

- Facility ages ranges from 94 years for Burlington Central HS to 3 years for Dr. Frank J. Hayden SS.
- Capital projects will be proposed to the Ministry of Education for funding, dependent on the outcomes of the Program and Accommodation Review.
- Once a final decision has been made in the Spring of 2017, staff will review and present options to the Board of Trustees with respect to capital improvements.

Process Timeline

Action	Tentative Dates
<input type="checkbox"/> Formation of Program and Accommodation Review Committee (PARC)	December 1, 2016
<input type="checkbox"/> Minimum of 2 Public Meetings	December 8, 2016 March 2, 2017
<input type="checkbox"/> Minimum of 4 PARC Working Meetings	January 26, 2017 February 2, 2017 February 9, 2017 March 23, 2017
<input type="checkbox"/> Director's Report to Committee of the Whole	March 29, 2017
<input type="checkbox"/> Public Delegation Night	April 18, 2017
<input type="checkbox"/> Presentation of Report to Board of Trustees for Decision	May 17, 2017
<input type="checkbox"/> Decision(s) Implemented	2018

Conclusion

- Learning opportunities are limited in small secondary schools.
- There is a significant amount of available pupil places in Burlington secondary schools.
- By reducing pupil places, the Board can be in a position to renew and upgrade remaining secondary school facilities.
- Opportunities will be provided for the community to provide feedback and input throughout the process.
- Ultimately, the **final decision(s) resulting from the PAR process will be made by the Board of Trustees.**