

Option 3: TBD Area to E.W. Foster PS, Sam Sherratt PS and W.I. Dick PS

English Program Boundary

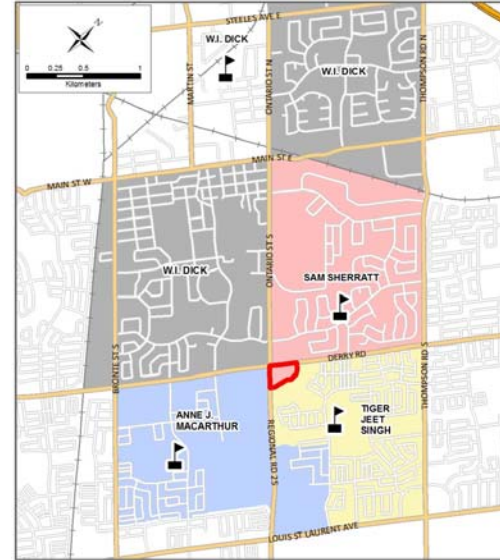
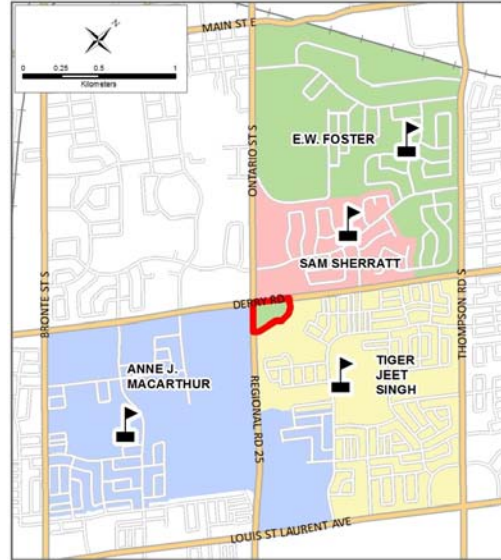
French Immersion Program Boundary

Grades JK-5

Grades 6-8

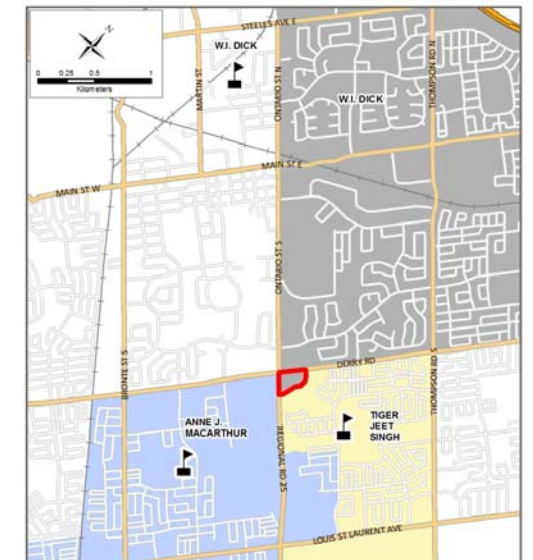
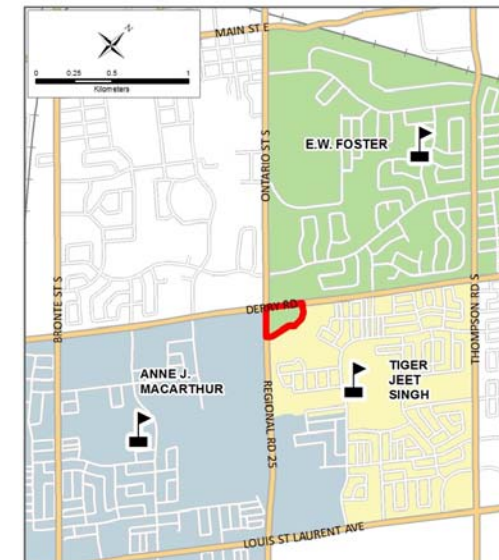
Grades 2-5

Grades 6-8



It is the intention of the HDSB to provide up-to-date and accurate information, and reasonable efforts have been made by the HDSB to verify the information, however a degree of error or change is inherent. This information is distributed "as is" without warranty. HDSB assume no legal liability or responsibility for the accuracy, completeness, or usefulness of any information. If you require additional information please contact the Planning Department at 905-335-3663.

The current street network was provided by the Regional Municipality of Halton and the Region assumes no responsibility or liability for its use or accuracy.



School	Program	School Cap.	Max. Port	Total Cap	2019	2020	2021	2022	2023	2024	2025	2026	2027	2028	2029	
Anne J. MacArthur PS (K-8 ENG, 2-8 FI)	ENG	793	18	1207	621	624	593	571	559	562	560	557	565	562	562	
	FI				358	376	378	371	349	303	305	308	310	308	307	
	SC-SPED				5	5	5	5	5	5	5	5	5	5	5	5
	Total				984	1005	976	947	913	870	870	870	880	875	874	
	Shortage of Pupil Places				-191	-212	-183	-154	-120	-77	-77	-77	-87	-82	-81	
Percent Utilization				124%	127%	123%	119%	115%	110%	110%	110%	110%	111%	110%	110%	
E.W Foster PS (K-5 ENG, 2-6 FI)	ENG	328	12	604	144	155	137	129	140	152	160	166	177	190	202	
	FI				165	163	156	165	168	163	160	162	163	168	170	
	SC-SPED				309	318	293	294	308	315	320	328	340	358	372	
	Total				309	318	293	294	308	315	320	328	340	358	372	
	Available/Shortage of Pupil Places				19	10	35	34	20	13	8	0	-12	-30	-44	
Percent Utilization				94%	97%	89%	90%	94%	96%	98%	100%	104%	109%	113%		
Sam Sherratt PS (K-8)	ENG	415	10	645	260	271	298	319	328	329	330	347	362	365	366	
	SC-SPED				143	129	129	117	117	126	123	123	124	123	122	
	FI				403	400	427	436	445	455	453	470	486	488	488	
	Total				403	400	427	436	445	455	453	470	486	488	488	
	Available/Shortage of Pupil Places				12	15	-12	-21	-30	-40	-38	-55	-71	-73	-73	
Percent Utilization				97%	96%	103%	105%	107%	110%	109%	113%	117%	118%	118%		
Tiger Jeet Singh PS (K-8 ENG, 2-8 FI)	ENG	896	12	1172	853	843	824	797	788	790	772	760	749	752	743	
	FI				260	254	225	210	189	172	160	159	156	157	157	
	SC-SPED				8	8	8	8	8	8	8	8	8	8	8	
	Total				1121	1105	1057	1015	985	970	940	927	913	917	908	
	Shortage of Pupil Places				-225	-209	-161	-119	-89	-74	-44	-31	-17	-21	-12	
Percent Utilization				125%	123%	118%	113%	110%	108%	105%	103%	102%	102%	101%		
W.I Dick PS (6-8, ENG, FI)	ENG	412	3	481	169	184	192	189	186	200	253	290	320	313	324	
	FI				235	221	222	188	172	156	166	176	182	178	175	
	SC-SPED				404	405	414	377	358	356	419	466	502	491	499	
	Total				404	405	414	377	358	356	419	466	502	491	499	
	Available/Shortage of Pupil Places				8	7	-2	35	54	56	-7	-54	-90	-79	-87	
Percent Utilization				98%	98%	100%	92%	87%	86%	102%	113%	122%	119%	121%		
To Be Determined (K-8 students)	ENG	-	-	-	0	0	0	0	0	0	0	0	0	0	0	
	FI	-	-	-	0	0	0	0	0	0	0	0	0	0	0	
	SC-SPED	-	-	-	0	0	0	0	0	0	0	0	0	0	0	
	Total	0	0	0	0	0	0	0	0	0	0	0	0	0	0	
Study Total				2432	2432	2432	2432	2432	2432	2432	2432	2432	2432	2432	2432	

Option 3 - TBD area redirected to E.W. Foster PS, Sam Sherratt PS and W.I. Dick PS

Status Quo – No change from the current situation for *Anne J. MacArthur PS*, and *Tiger Jeet Singh PS*.

TBA area is redirected to *E.W. Foster PS* for the English (K-5) and FI program (2-5), *Sam Sherratt PS* for ENG program grades 6-8, and *W.I. Dick PS* for FI program grades 6-8. Enrolments will be impacted starting in 2023.
High School: *Craig Kielburger SS*.

E.W. Foster PS: Enrolments for the English and FI program will be impacted. With the addition of TBD enrolments, it is projected that one additional portable will be required past 2026. Utilization is expected to increase by 7% in 2028.
E.W Foster PS is directed to *Sam Sherratt PS* for English grades 6-8 and *W.I. Dick PS* for grades 6-8 FI.

Sam Sherratt PS: Grades 6 to 8 will be impacted. With the addition of TBD enrolments, it is projected additional portables will not be required. Utilization is expected to increase by 2% in 2028.
Sam Sherratt PS has a split grade 8 cohort to *Milton District HS* and *Craig Kielburger SS*.

W.I. Dick PS: Only enrolments for the FI program will be impacted for grades 6-8. It is projected that additional portables will not be required. Impact to utilization is minimal.
W.I. Dick PS has a split grade 8 cohort to *Craig Kielburger SS* and *Milton District HS*.

Transportation: Crossing guards are not permitted on Derry Road or Regional Road 25, students will be bussed to *Sam Sherratt PS*, *E.W. Foster PS* and *W.I. Dick PS*. HSTS notes these roads are high traffic and will make bus pick-ups and drop-offs challenging for both students and traffic flow.