



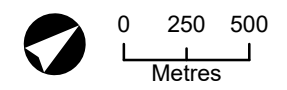
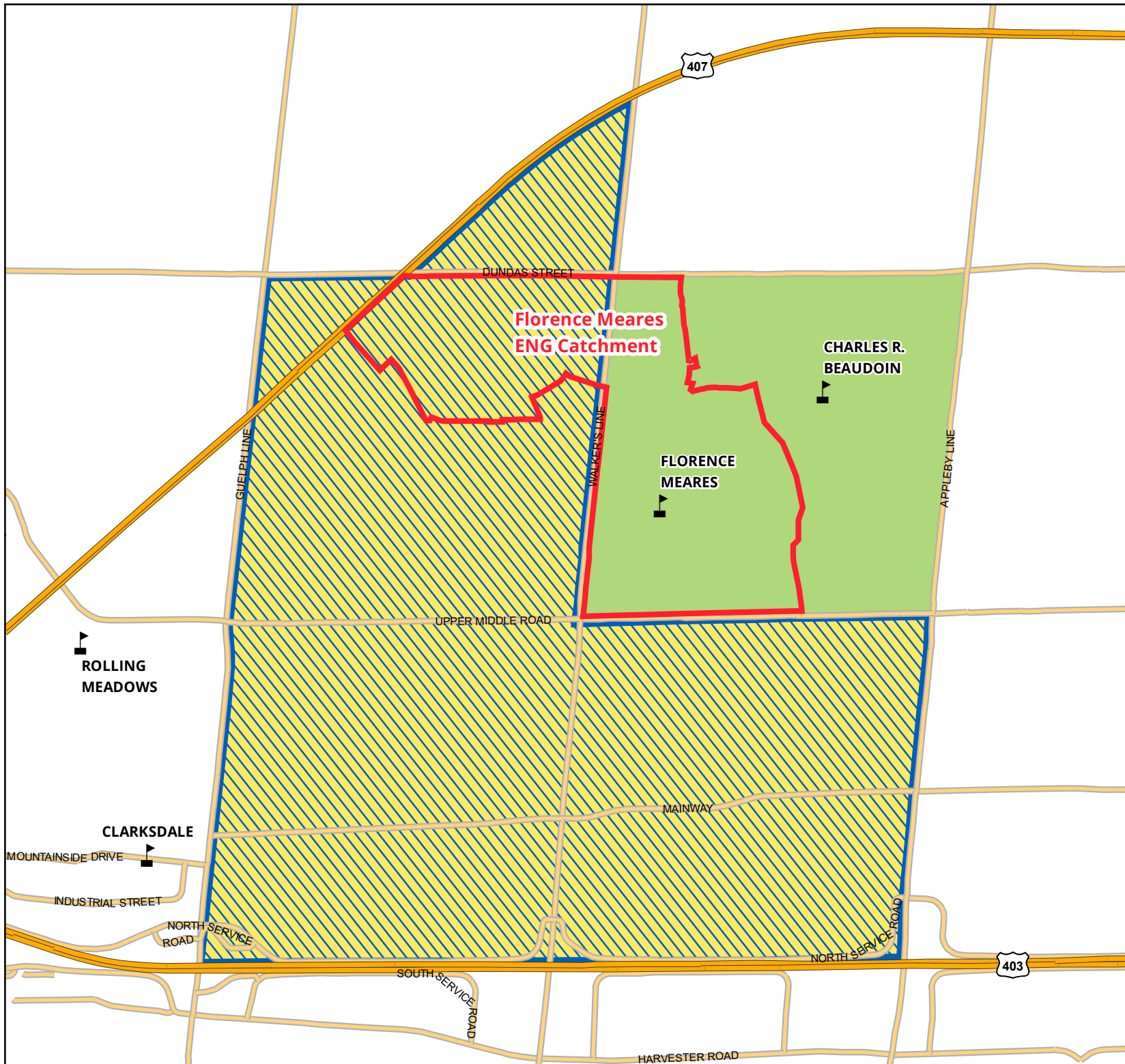


Florence Meares Redirection Overview

Catchment Area

-  Florence Meares ENG: JK-8
-  Charles R. Beaudoin FI: 2-8
-  Rolling Meadows FI: 7-8
-  Clarksdale FI: 2-6



Street network provided by the Regional Municipality of Halton. The Region assumes no responsibility or liability for its use or accuracy. It is the intention of the HDSB to provide up-to-date and accurate information. Reasonable efforts have been made to verify the information shown here, however a degree of error is inherent. This information is distributed "as is" without warranty. HDSB assumes no legal liability or responsibility for the accuracy, completeness, or usefulness of any information. If you require additional information please contact the HDSB Planning Department at 905-335-3663. Boundaries are subject to change.