



# Oakville NE #3 and #5 Boundary Study

**BRC meeting #2 (virtual)  
October 26, 2023 @7pm**





# Honouring the Land and Territory



Halton as we know it today is rich in history and modern traditions of many First Nations and the Métis. From the Anishinaabe to the Attawandaron, the Haudenosaunee, and the Métis - these lands surrounding the Great Lakes are steeped in Indigenous history.

As we gather today on these treaty lands we have the responsibility to honour and respect the four directions, land, waters, plants, animals, ancestors that walked before us, and all the wonderful elements of creation that exist.

We would like to acknowledge and thank the Mississaugas of the Credit First Nation for sharing their traditional territory with us.

# Agenda

## **PART 1:**

- Housekeeping Items
  - What's new?

## **PART 2:**

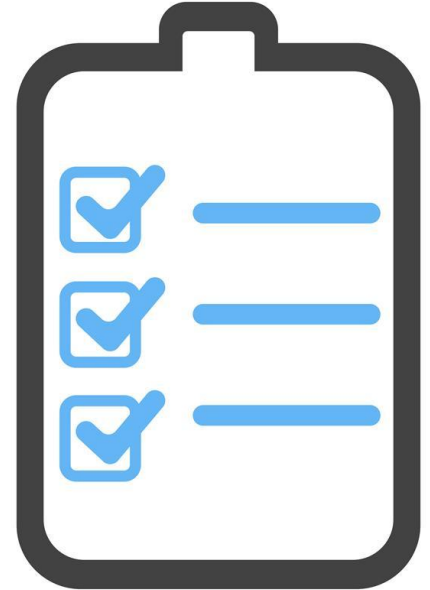
- Review Options 1 to 4

## **PART 3:**

- Breakout Sessions & Group Discussion and Debrief

## **PART 4:**

- Next Steps



# PART 1



# Housekeeping Items

## For Today's Meeting

# New and updated information

## *What's new?*

### **Update to projections and charts include:**



- Dr. David R. Williams PS
  - Graph reflects a Max. Capacity of 1344 with 24 portables in 2023 (*changes made in BRC meeting #1 Oct 19 Presentation*).
- Oakville NE #5 PS
  - Tables and Graphs includes Building Utilization and Max Capacity with (926, 1340) and without (788, 1202) the 6 classroom addition (*projection tables updated in BRC Google shared folder*).
- Post's Corners PS and River Oaks PS
  - Boundary change in Options 1 to 4 to be implemented starting 2024 (*projection tables updated in BRC Google shared folder*).
- Zone Projections
  - Zone projections provided (*BRC Google shared folder*).

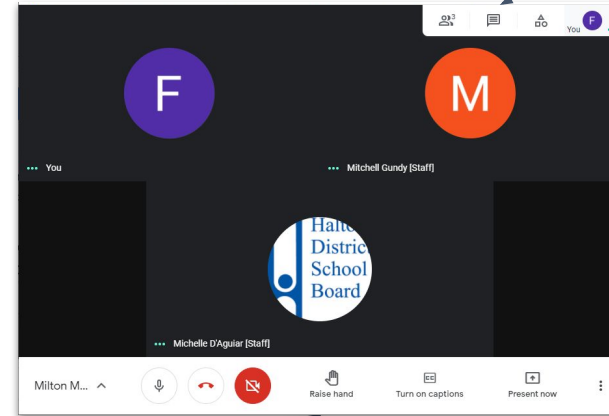
# Housekeeping Items



## Virtual BRC Meeting Etiquette:

1. When not speaking, turn off the microphone.
2. When you have a question use the
  - a. Hand Up Button
  - b. Type Hand Up in the message window
3. If you do not feel comfortable having the video on, toggle it off.
4. Staff will provide frequent stops for questions
5. “Turn on captions” for live captions for who is speaking.
6. Typed comments and questions in the chat.
7. Layouts

## Meeting Screen

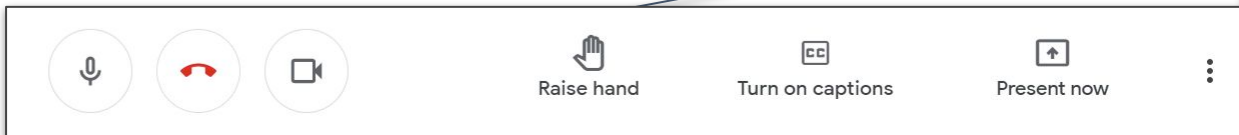


6.

1.

2.

3.



1.

3.

2.

5.

7.

# Housekeeping Items

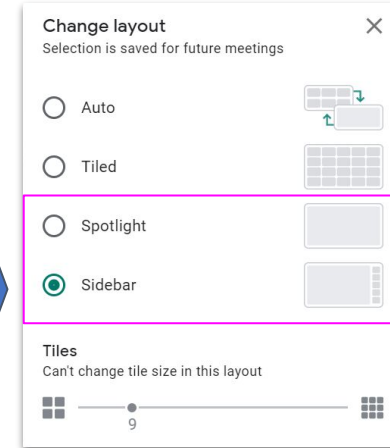
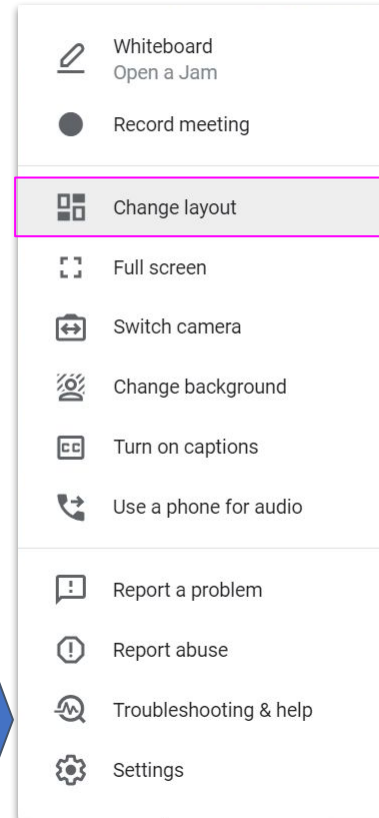


## Virtual BRC Meeting Etiquette:

1. When not speaking, turn off the microphone.
2. When you have a question use the
  - a. Hand Up Button
  - b. Type Hand Up in the message window
3. If you do not feel comfortable having the video on, toggle it off.
4. Staff will provide frequent stops for questions
5. “Turn on captions” for live captions for who is speaking.
6. Typed comments and questions the chat.
7. Layouts



7.



# Housekeeping Items

## Today's Goals:

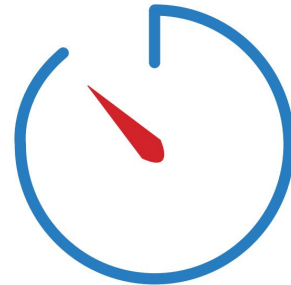
- Review of Options 1 to 4 (just maps & updated graphs)
- Breakout Sessions
- Debriefs (Large Group Discussion)
- Next Steps for the next meeting

## BRC Meeting Notes:

- [BRC Meeting #1 Notes](#) (October 19, 2023) - in Google Drive share folder

## Information Requests/Additional Clarification:

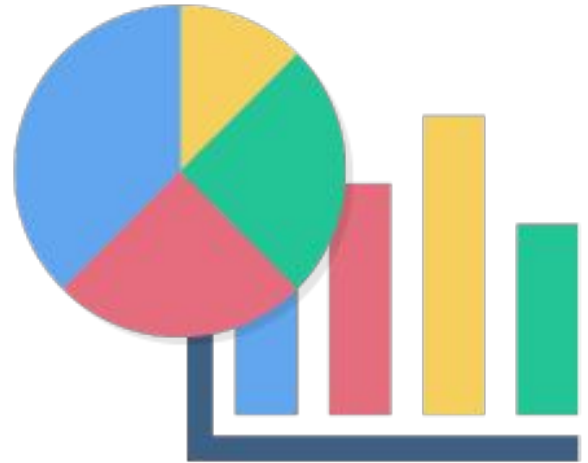
- Enrolment Data By Zones
- Additional Before and After Care Information



# Option Resources

## Additional Resources:

1. Option maps and tables can be found in more detail in the boundary review [BRC Google Shared Drive](#)
2. [Options - Maps and Projections](#)
3. Boundary review [criteria](#) to consider
4. [Zone Map](#)
5. [Transportation Walking Maps](#)



# Boundary Review Timeline

Item	Date
BRSC meeting #1	June 29, 2023 (virtual)
BRSC meeting #2	October 3, 2023 (virtual)
BRSC meeting #3/BRC meeting #1	October 19, 2023 (in-person @ Sheridan PS Library)
BRSC meeting #4/BRC meeting #2	October 26, 2023 (virtual)
BRSC meeting #5/BRC meeting #3	November 2, 2023 (virtual)
BRSC meeting #6/BRC meeting #4	November 16, 2023 (virtual)
Feedback opens	November 17, 2023
Public Information Meeting (PIM)	November 23, 2023 (livestream)



# Boundary Review Timeline (con't)

Item	Date
Feedback closes	November 27, 2023 (4pm)
BRSC meeting #7/BRC meeting #5	November 30, 2023 (in-person @TBD)
<i>BRSC meeting #8/BRC meeting #6</i>	<i>*if required (virtual)</i>
Board Meeting: Oakville NE #3/#5 PS Recommendations (For Information)	December 6, 2023 or December 20, 2023 <i>(note: may be changed to Dec 13)</i>
Board Meeting: Oakville NE #3/#5 PS Recommendations (For Approval)	December 20, 2023 <i>(note: may be changed to Dec 13)</i> or January 10th, 2024
Notification of Decision to affected communities	After Board Approval
Start of the Integration Committee	After Board Approval



# PART 2

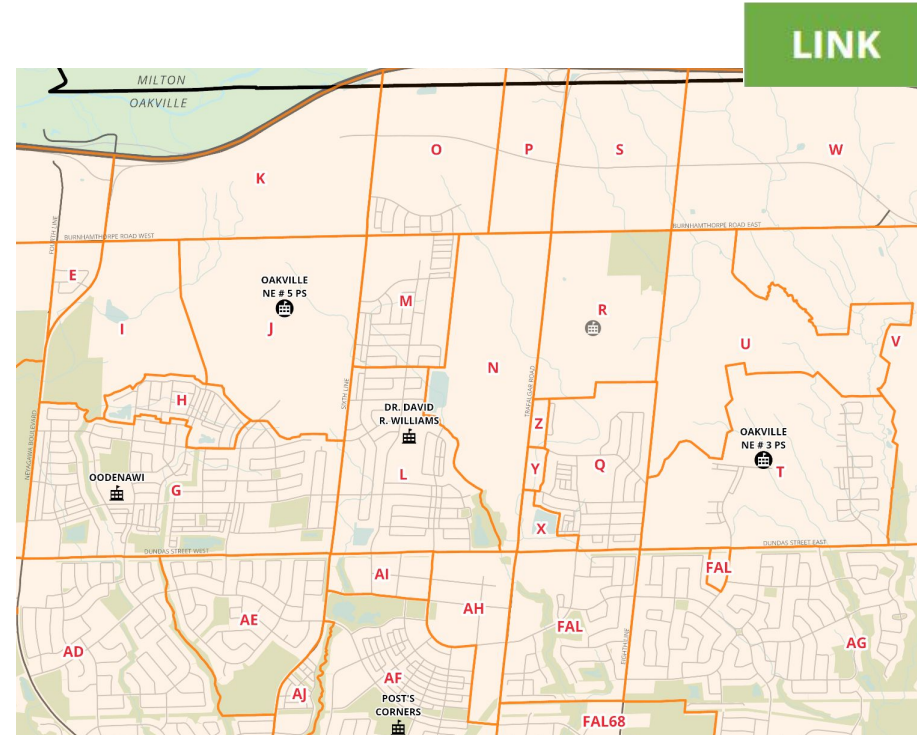
# Presentation of Options

A Short Recap

# Presentation of Options

## Initial Options Summary:

- Current:** Status Quo
- Option 1:** CONTROL SCENARIO. Demonstrate enrolment trends in North Oakville if FI remains as is at DrDRW and other holding schools. OAK#3 and OAK#5 are single track K-8 ENG schools. Boundary change for Post's Corners.
- Option 2:** OAK#3 and OAK#5 single track K-8 ENG schools. FI at DDRW is reduced to its own ENG track boundary. Remaining area of North Oakville served by existing holding FI schools. Set new holding schools for OAK#4 and #6. Boundary change for Post's Corners.
- Options 3 & 4:** Complete removal of FI schools in North Oakville, served by schools south of Dundas Street. Set new holding schools for OAK#4 and #6. Boundary change for Post's Corners.



# Option 1

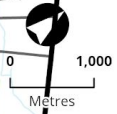
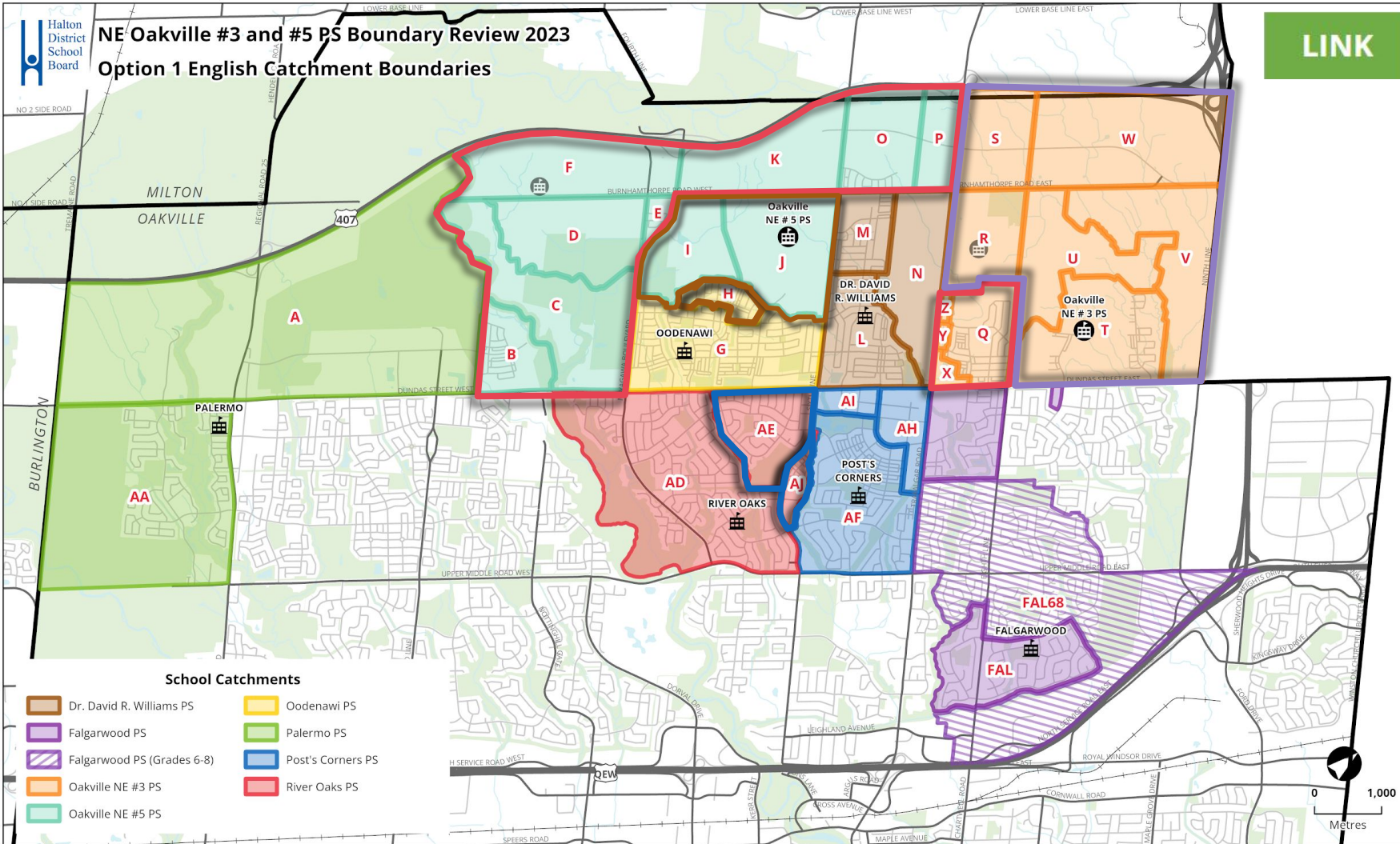
## CONTROL

# OPT 1 - ENG Boundary



## NE Oakville #3 and #5 PS Boundary Review 2023 Option 1 English Catchment Boundaries

[LINK](#)



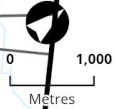
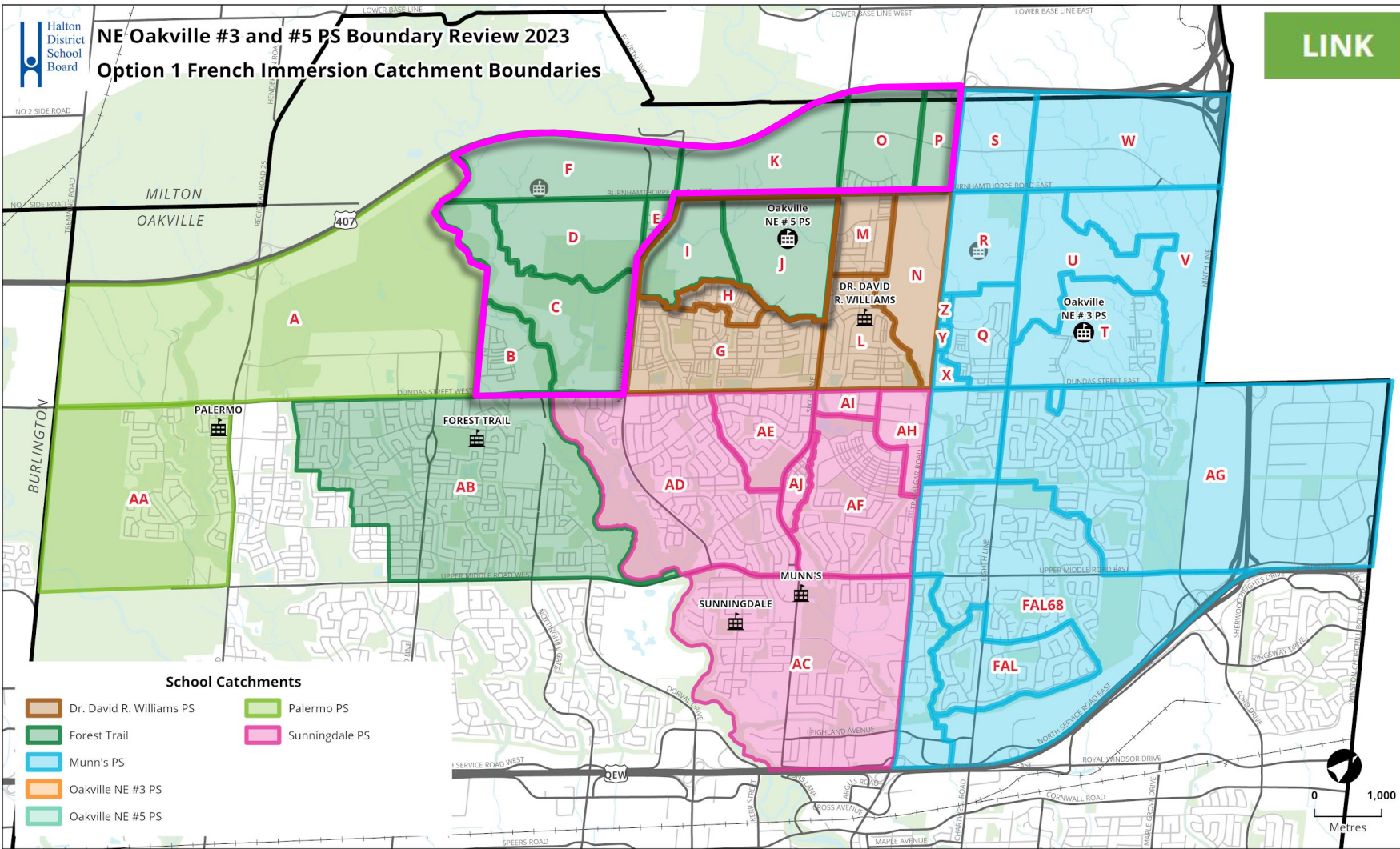


# OPT 1 - FI Boundary



## NE Oakville #3 and #5 PS Boundary Review 2023 Option 1 French Immersion Catchment Boundaries

[LINK](#)



# Option 1 - Projections

LINK

## River Oaks PS summary:

- School contains K-8 ENG program
- Building Capacity: 639
- Maximum Capacity: 777
- Portables not required after 2024
- No longer an ENG holding school for areas north of Dundas St

River Oaks PS - Option 1



MAX PORTABLES: 6

6	2	0	0	0	0	0	0	0	0	0
---	---	---	---	---	---	---	---	---	---	---

# Option 1 - Projections

[LINK](#)

## Post's Corners PS summary:

- School contains K-8 ENG and SPED programs
- Building Capacity: 600
- Maximum Capacity: 876
- Portables required over the next 10 years

Post's Corners PS - Option 1



MAX PORTABLES: 12

12	6	6	6	7	7	8	8	8	7	7
----	---	---	---	---	---	---	---	---	---	---



# Option 2

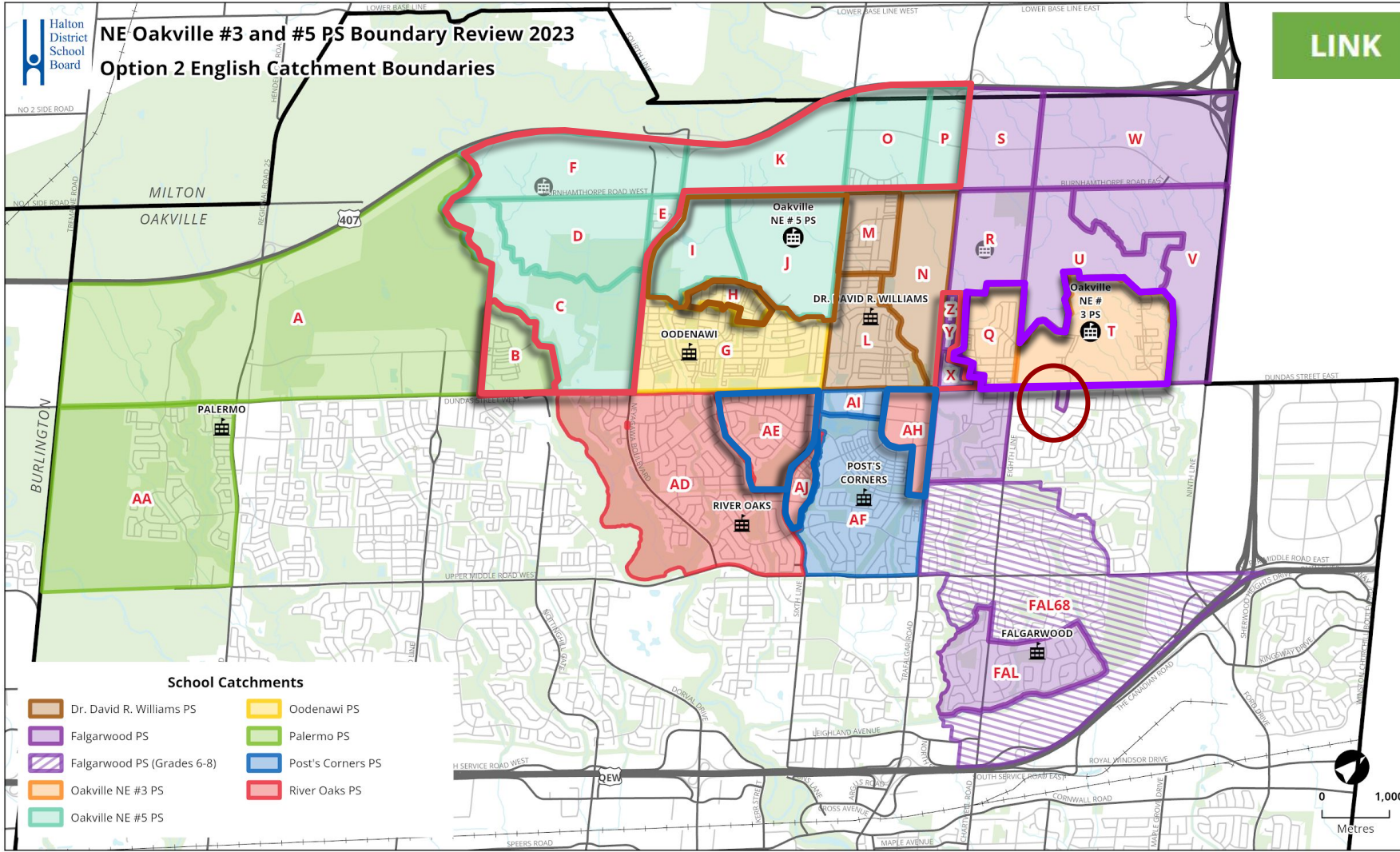
## REDUCTION IN FI

# OPT 2 - ENG Boundary



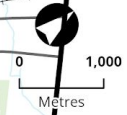
## NE Oakville #3 and #5 PS Boundary Review 2023 Option 2 English Catchment Boundaries

[LINK](#)



### School Catchments

- Dr. David R. Williams PS
- Oodenawi PS
- Falgarwood PS
- Palermo PS
- Falgarwood PS (Grades 6-8)
- Post's Corners PS
- Oakville NE #3 PS
- River Oaks PS
- Oakville NE #5 PS

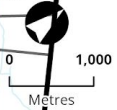
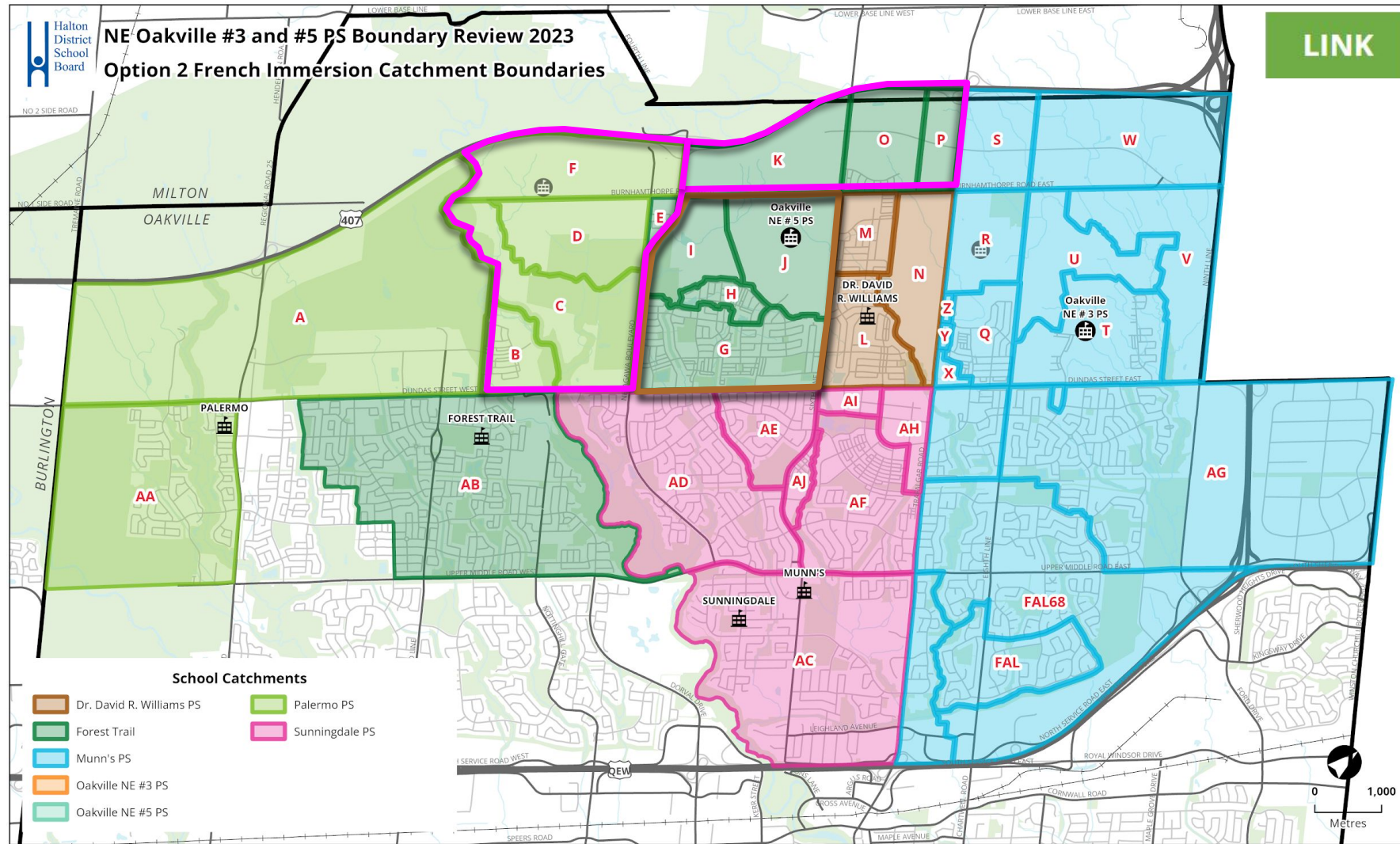


# OPT 2 - FI Boundary



## NE Oakville #3 and #5 PS Boundary Review 2023 Option 2 French Immersion Catchment Boundaries

[LINK](#)

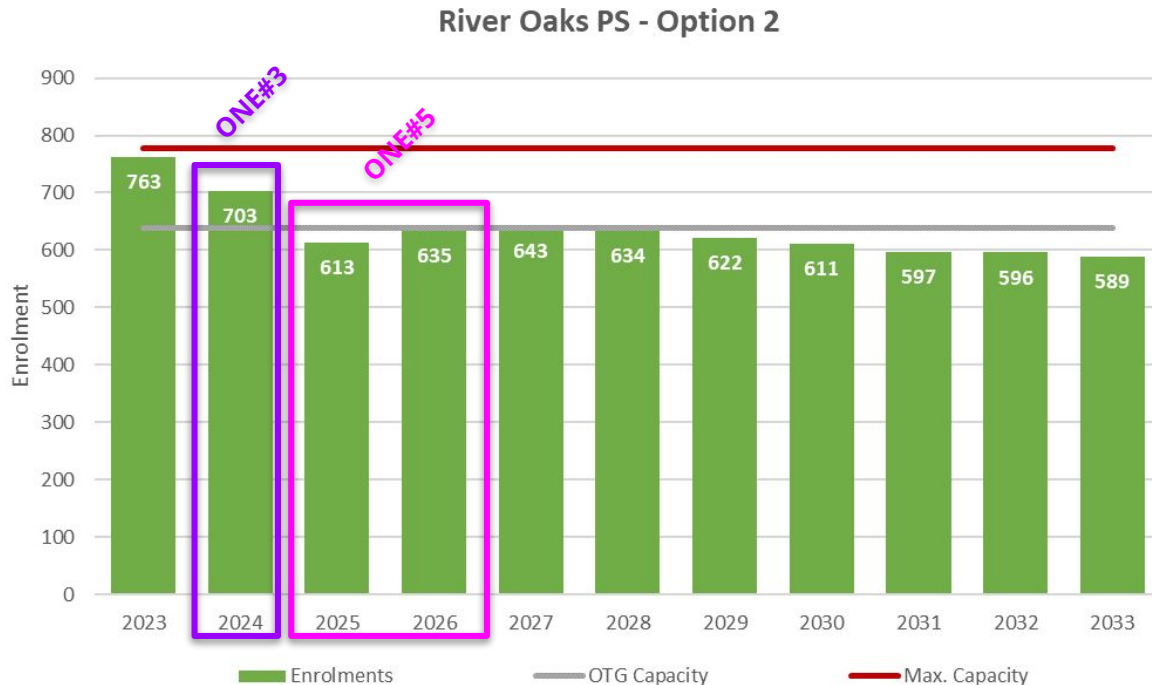


# Option 2 - Projections

[LINK](#)

## River Oaks PS summary:

- School contains K-8 ENG program
- Building Capacity: 639
- Maximum Capacity: 777
- Portables not required after 2024
- No longer an ENG holding school for areas north of Dundas St



MAX PORTABLES: 6

6	3	0	0	0	0	0	0	0	0	0
---	---	---	---	---	---	---	---	---	---	---



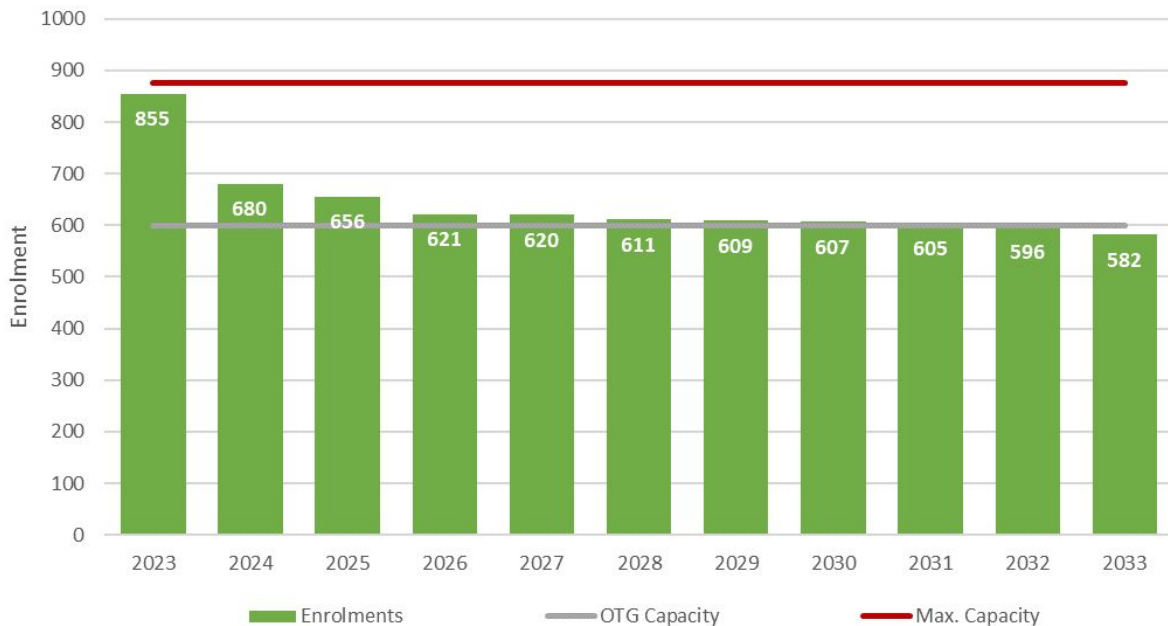
# Option 2 - Projections

[LINK](#)

## Post's Corners PS summary:

- School contains K-8 ENG and SPED programs
- Building Capacity: 600
- Maximum Capacity: 876
- Portables required until 2027

Post's Corners PS - Option 2



MAX PORTABLES: 12

12	3	2	1	1	0	0	0	0	0	0
----	---	---	---	---	---	---	---	---	---	---

# Option 3

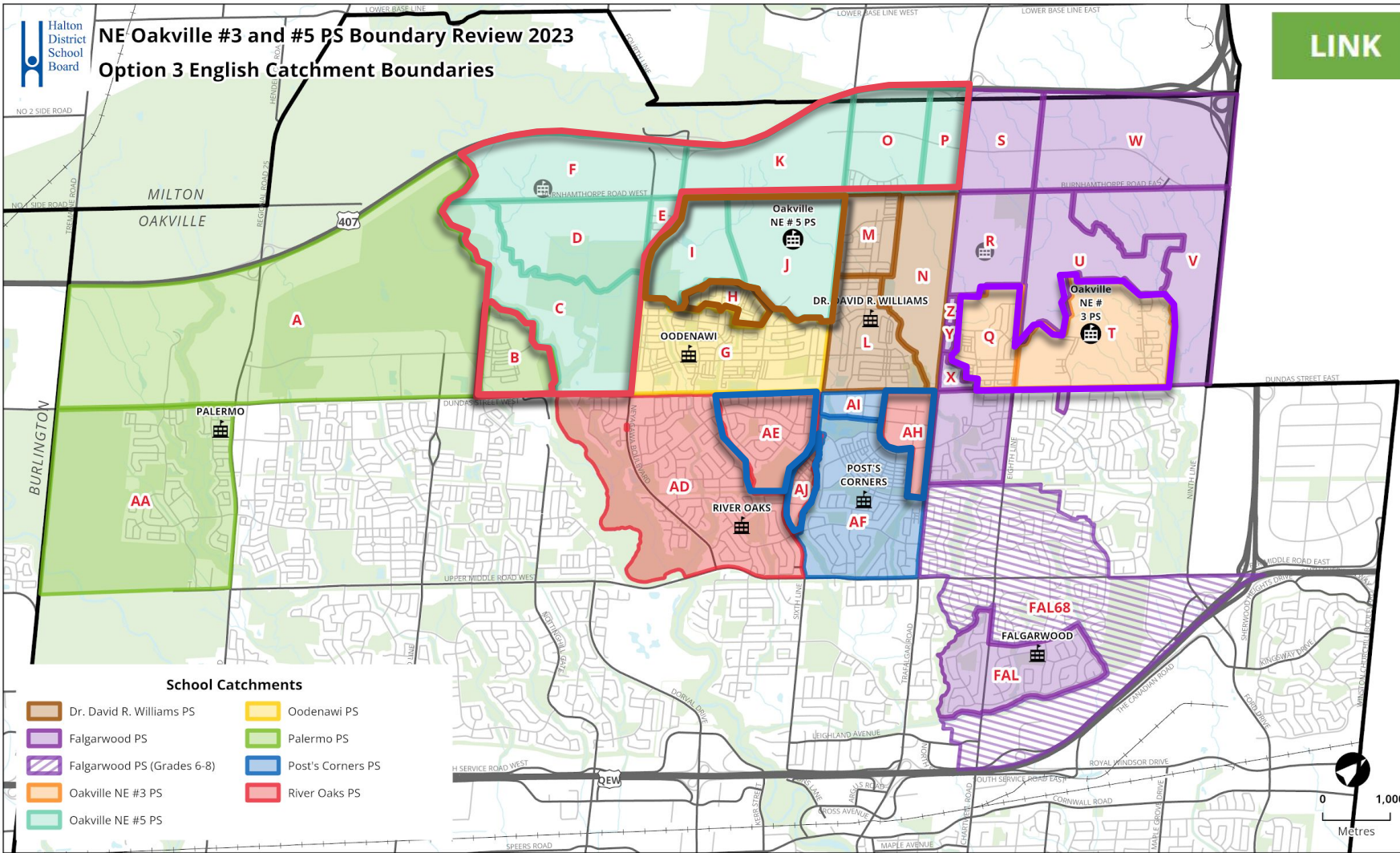
REMOVAL OF FI IN NORTH OAKVILLE #1

# OPT 3 - ENG Boundary



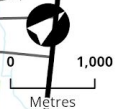
## NE Oakville #3 and #5 PS Boundary Review 2023 Option 3 English Catchment Boundaries

[LINK](#)



### School Catchments

- Dr. David R. Williams PS
- Oodenawi PS
- Falgarwood PS
- Palermo PS
- Falgarwood PS (Grades 6-8)
- Post's Corners PS
- Oakville NE #3 PS
- River Oaks PS
- Oakville NE #5 PS

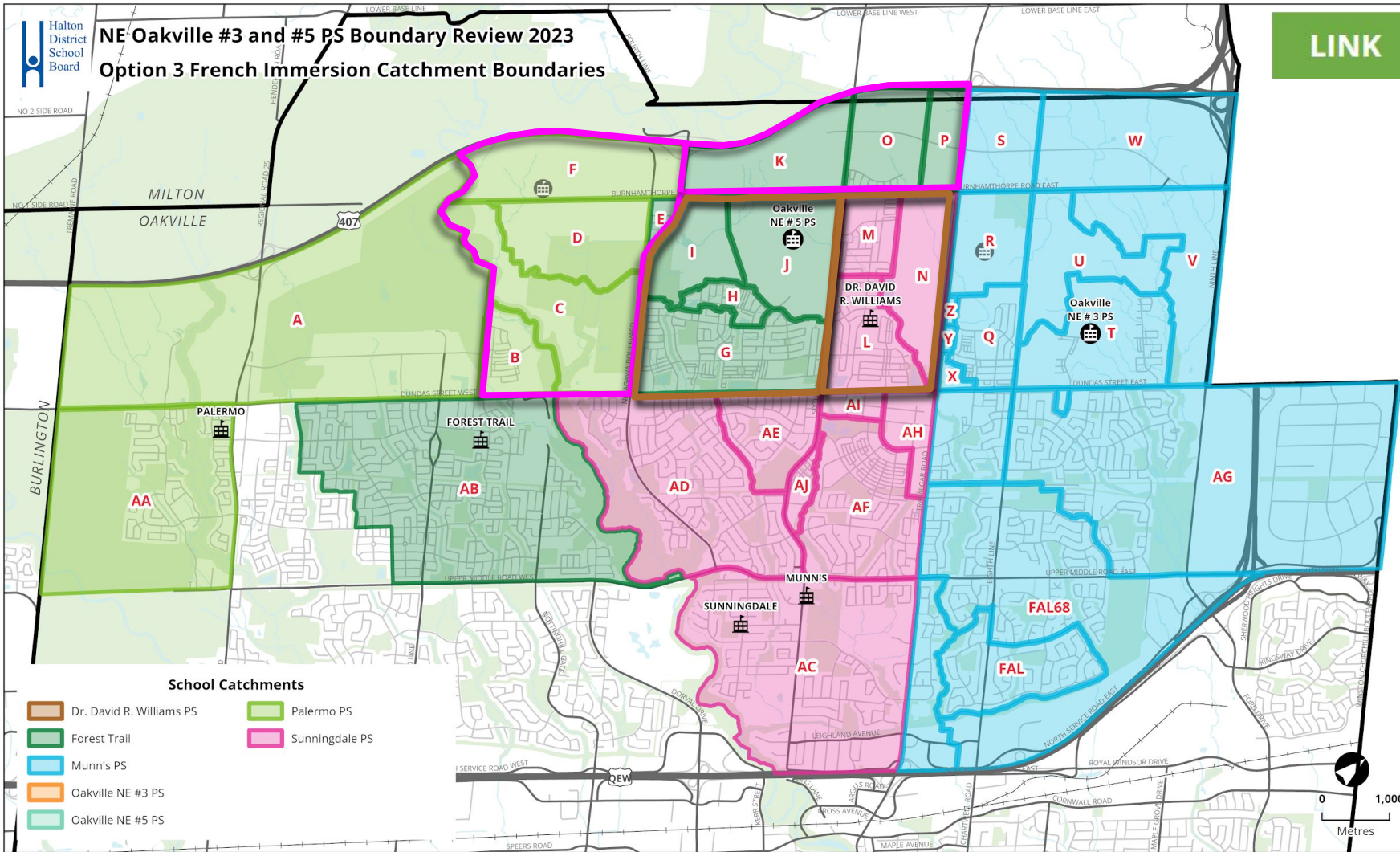


# OPT 3 - FI Boundary



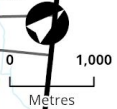
## NE Oakville #3 and #5 PS Boundary Review 2023 Option 3 French Immersion Catchment Boundaries

[LINK](#)



### School Catchments

- Dr. David R. Williams PS
- Forest Trail
- Munn's PS
- Oakville NE #3 PS
- Oakville NE #5 PS
- Palermo PS
- Sunningdale PS





# Option 3 - Projections

[LINK](#)

## River Oaks PS summary:

- School contains K-8 ENG program
- Building Capacity: 639
- Maximum Capacity: 777
- Portables not required after 2024
- No longer an ENG holding school for areas north of Dundas St

River Oaks PS - Option 3



MAX PORTABLES: 6

6	3	0	0	0	0	0	0	0	0	0
---	---	---	---	---	---	---	---	---	---	---

# Option 3 - Projections

LINK

## Post's Corners PS summary:

- School contains K-8 ENG and SPED programs
- Building Capacity: 600
- Maximum Capacity: 876
- Portables required until 2027

Post's Corners PS - Option 3



MAX PORTABLES: 12

12	3	2	1	1	0	0	0	0	0	0
----	---	---	---	---	---	---	---	---	---	---

# Option 4

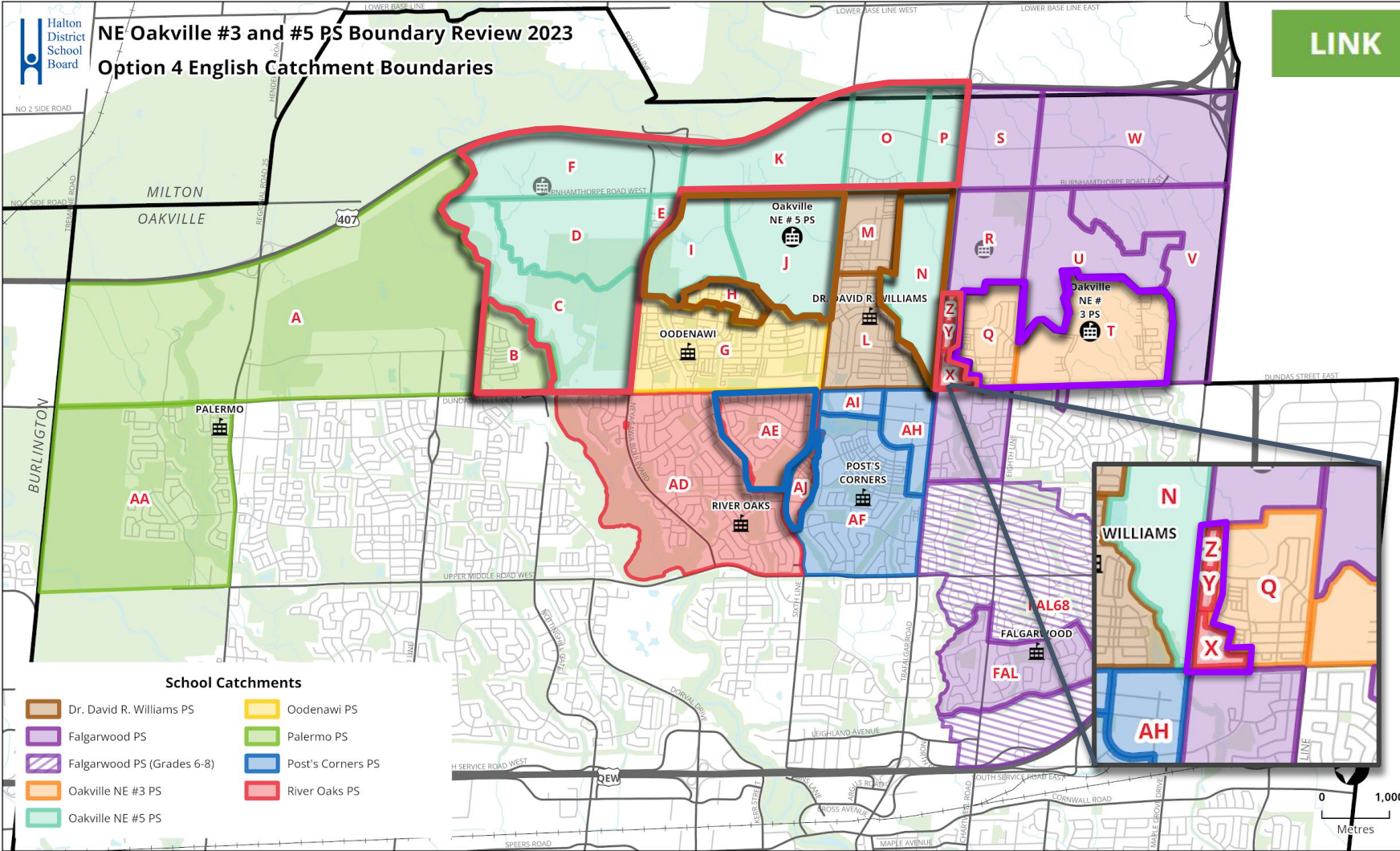
REMOVAL OF FI IN NORTH OAKVILLE #2

# OPT 4 - ENG Boundary



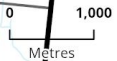
## NE Oakville #3 and #5 PS Boundary Review 2023 Option 4 English Catchment Boundaries

[LINK](#)



### School Catchments

- Dr. David R. Williams PS
- Oodenawi PS
- Falgarwood PS
- Palermo PS
- Falgarwood PS (Grades 6-8)
- Post's Corners PS
- Oakville NE #3 PS
- River Oaks PS
- Oakville NE #5 PS



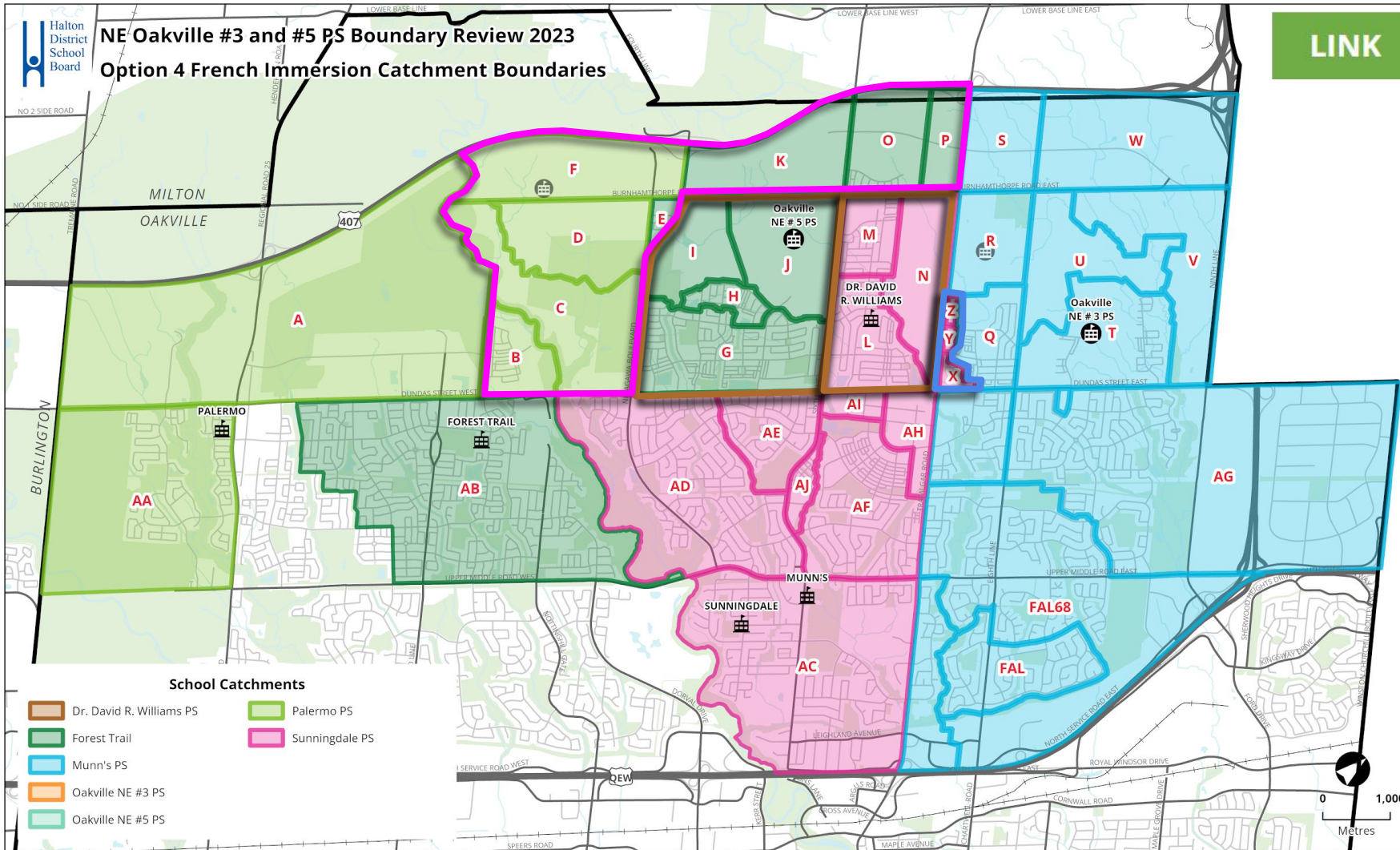


# OPT 4 - FI Boundary



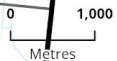
## NE Oakville #3 and #5 PS Boundary Review 2023 Option 4 French Immersion Catchment Boundaries

[LINK](#)



### School Catchments

- Dr. David R. Williams PS
- Forest Trail
- Munn's PS
- Oakville NE #3 PS
- Oakville NE #5 PS
- Palermo PS
- Sunningdale PS



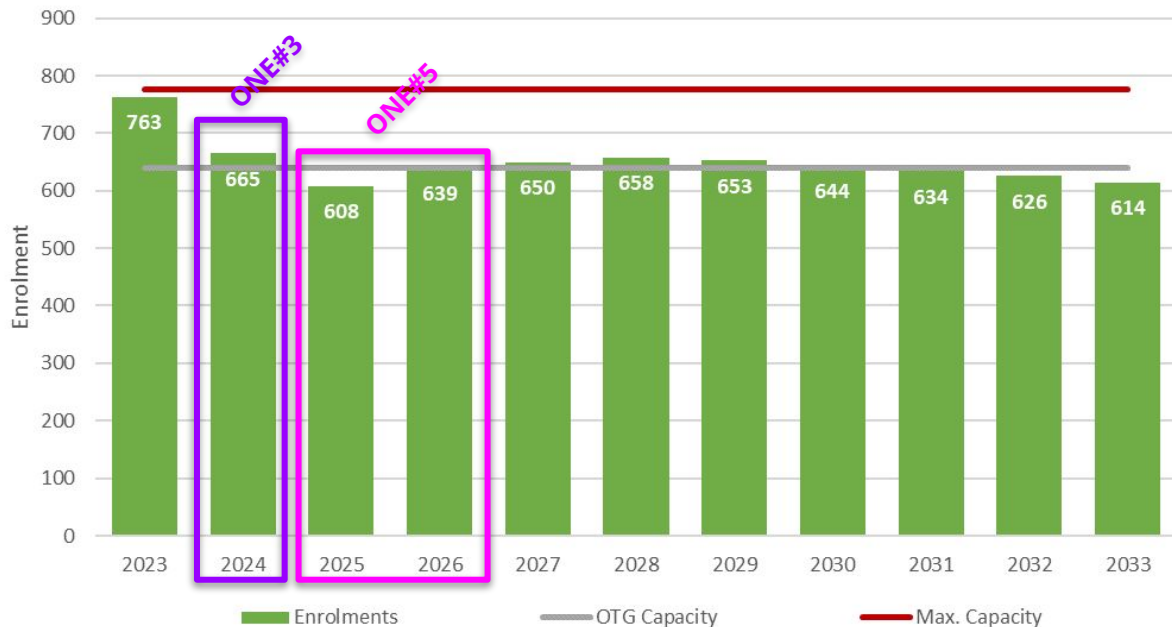
# Option 4 - Projections

[LINK](#)

## River Oaks PS summary:

- School contains K-8 ENG program
- Building Capacity: 639
- Maximum Capacity: 777
- Portables not required after 2024 except from 2028 to 2029
- Continues to be an ENG holding school for areas north of Dundas St

River Oaks PS - Option 4



**MAX PORTABLES: 6**

6	1	0	0	0	1	1	0	0	0	0
---	---	---	---	---	---	---	---	---	---	---

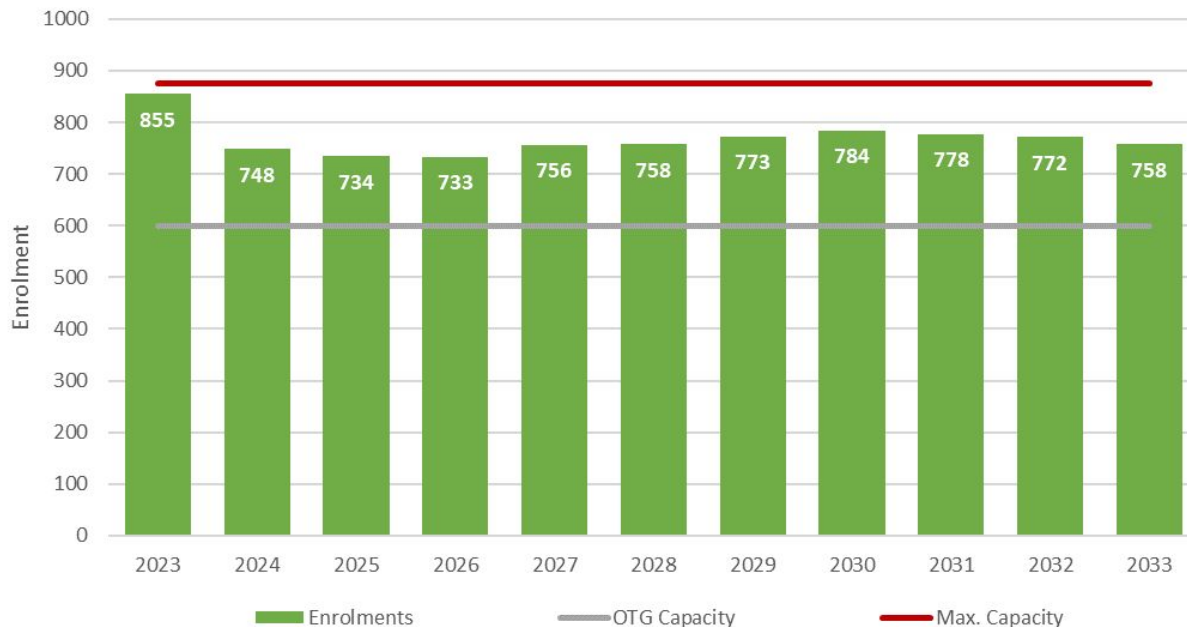
# Option 4 - Projections

LINK

## Post's Corners PS summary:

- School contains K-8 ENG and SPED programs
- Building Capacity: 600
- Maximum Capacity: 876
- Portables required over the next 10 years

Post's Corners PS - Option 4



MAX PORTABLES: 12

12	6	6	6	7	7	8	8	8	7	7
----	---	---	---	---	---	---	---	---	---	---

# PART 3



# How to Use Google Jamboards



**Group Number**



**How to Change pages**



**Group 1**

Weight of the criteria presented

Are there any other criteria we should consider?

**Add Sticky Notes**

**Sticky Notes**

Viability of Programs:  
*Can programs be successfully maintained at the school?*

Proximity to schools:  
*Are safe walk-to opportunities maximized?*

Stable Long Term Boundaries:  
*Do projections show long term stability and avoid the need for additional boundary changes in the short term?*

Balance of Overall Enrolment:  
*Is access to programs, resources, extra curricular opportunities being maximized? Can over/under utilization be avoided?*

Temporary Accommodation (Portables):  
*Is the use of portable classroom minimized?*

Transportation Requirements:  
*Is this option cost effective for transportation?*

Fiscal Sustainability:  
*Are unnecessary costs avoided?*

Student Experience:  
*Does this option minimize the number of student moves? Are cohorts kept together?*

Geographic Area and Barriers:  
*Create geographically contiguous boundaries, take into account physical barriers.*

Heavy

Light

Oakville

# Breakout Session Groups



## Group 1

- Jessica Harrison Kerr
- Garnel du Preez
- Mark Uriarte
- Yong Jiang
- Claire Proteau
- Amy Collard
- Carole Baxter
- Michelle D'Aguiar

## Group 2

- Ola Badaarani
- Alison MacDougall
- Sylvia Schorr
- Sharmeen Sheikh
- Jennifer Lo Tessman
- Marie Hoekstra
- Jennie Petko
- Joanna Oliver

## Group 3

- Champa Asrani
- Jimmy Nanda
- Makdas Chaudhry
- Davia Javed
- Jonathan Shoss
- David Boag
- Kelly Amos
- Mitchell Gundy

## Floaters

- Lauren Choi
- Fred Thibeault

# Breakout #1

## Boundary Review Criteria

# Criteria to Evaluate Options

Criteria to review options include but not limited to:

<p><b>Viability of Programs:</b> <i>Can programs be successfully maintained at the school?</i></p>	<p><b>Proximity to schools:</b> <i>Are safe walk-to opportunities maximized?</i></p>
<p><b>Stable Long Term Boundaries:</b> <i>Do projections show long term stability and avoid the need for additional boundary changes in the short term?</i></p>	<p><b>Balance of Overall Enrolment:</b> <i>Is access to programs, resources, extra curricular opportunities being maximized? Can over/under utilization be avoided?</i></p>
<p><b>Temporary Accommodation (Portables):</b> <i>Is the use of portable classroom minimized?</i></p>	<p><b>Transportation Requirements:</b> <i>Is this option cost effective for transportation?</i></p>
<p><b>Fiscal Sustainability:</b> <i>Are unnecessary costs avoided?</i></p>	<p><b>Student Experience:</b> <i>Does this option minimize the number of student moves? Are cohorts kept together?</i></p>
<p><b>Geographic Area and Barriers:</b> <i>Create geographically contiguous boundaries, take into account physical barriers.</i></p>	<p><b>Other:</b> <i>Other criteria recommended by the BRSC or BRC</i></p>

# Breakout Session #1



## JamBoard - Breakout Session Approach

1. Take **5 minutes** for introductions with your group members.
2. For **15 minutes**, each group will
  - a. Review the current set of Boundary Review Criteria, and consider their importance and weight for the context of this review.
  - b. Additional criteria to consider?
3. Select a moderator from your group (1-2 max).
4. Following the group discussion, the moderator will present the findings of the discussion to the wider group.



[Group 1 Link](#)

[Group 2 Link](#)

[Group 3 Link](#)

[Group 4 Link](#)

# Debrief #1: Criteria



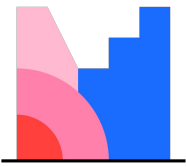
*Q1: Weight of the criteria presented*

*Q2: Are there any other criteria we should consider?*



**[CLICK HERE FOR JAM BOARD](#)**

# Debrief #1: Criteria



*Q1: Weigh the Criteria in the context of this Boundary Review*

*Q2: What is your community expressing as a priority?*



[CLICK HERE FOR MENTI-METRE SURVEY](#)

OR

Go to [www.Menti.com](http://www.Menti.com) & enter code 7508 0524

# Breakout #2

## Option Review and Discussion



# Breakout Session #2



## JamBoard - Breakout Session Approach

1. For **30 minutes**, each group will review and discuss the options and return with a response to share with the wider group.
  - a. What do you like/dislike about the option?
  - b. Does the option meet the criteria?
  - c. How can the option be improved?
  - d. Additional options?
2. This is a opportunity to voice your opinion while also bringing forward the views of the community you represent to other BRC members.
3. Following the group discussion, the moderator will present the findings of the discussion to the wider group.



[Group 1 Link](#)

[Group 2 Link](#)

[Group 3 Link](#)

[Group 4 Link](#)

# Debrief #2: Options



*Q1: What do you like/dislike about the option?*

*Q2: Does the option meet the criteria?*

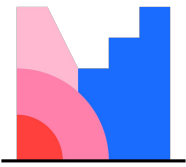
*Q3: How can the option be improved?*

*Q4: Additional options?*



[CLICK HERE FOR JAM BOARD](#)

# Debrief #2: Criteria



*Q: Rate the Options on a Scale of 1-5*



[CLICK HERE FOR MENTI-METRE SURVEY](#)

OR

Go to [www.Menti.com](http://www.Menti.com) & enter code **1875 2200**

# PART 4

# Next Steps

Upcoming Meetings and Set Targets

# Boundary Review Timeline

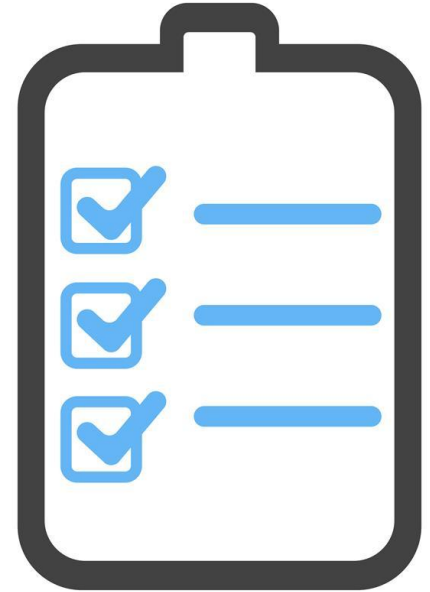
Item	Date
BRSC meeting #1	June 29, 2023 (virtual)
BRSC meeting #2	October 3, 2023 (virtual)
BRSC meeting #3/BRC meeting #1	October 19, 2023 (in-person @ Sheridan PS Library)
BRSC meeting #4/BRC meeting #2	October 26, 2023 (virtual)
BRSC meeting #5/BRC meeting #3	November 2, 2023 (virtual)
BRSC meeting #6/BRC meeting #4	November 16, 2023 (virtual)
Feedback opens	November 17, 2023
Public Information Meeting (PIM)	November 23, 2023 (livestream)





# Targeted Outcomes for Next Meeting

- Review the Option 1 to 4 presented so far and consider the following:
  - Any recommendations for modifications to the Options?
  - Any new Options to consider? (*provide by October 30th, 12pm for consideration*)
  - Can we remove any Options from consideration?



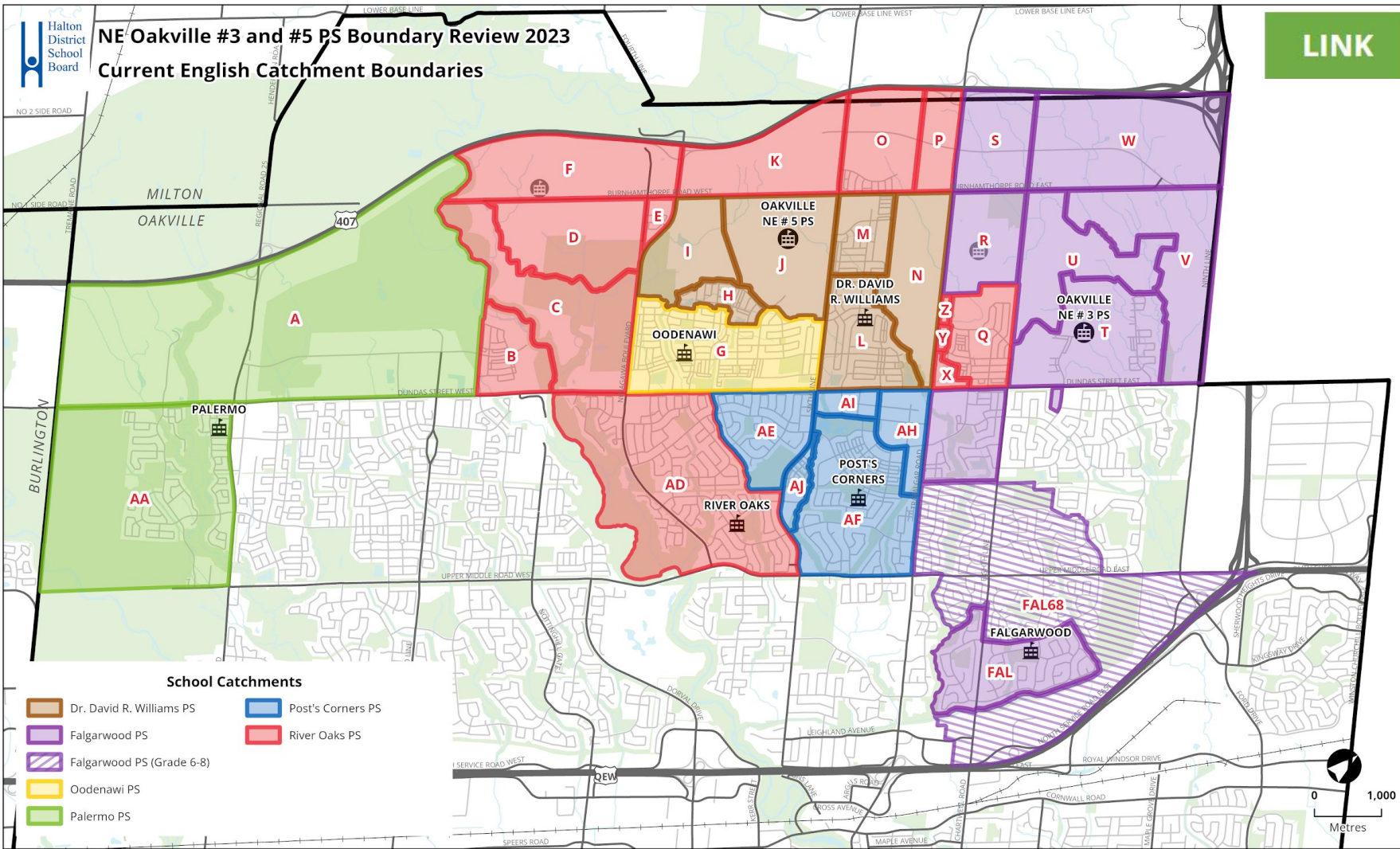
# QUESTIONS?

**THANK YOU!!**

# Current Programs and Boundaries

Existing Accommodation Pressures

# SQ - ENG Boundary

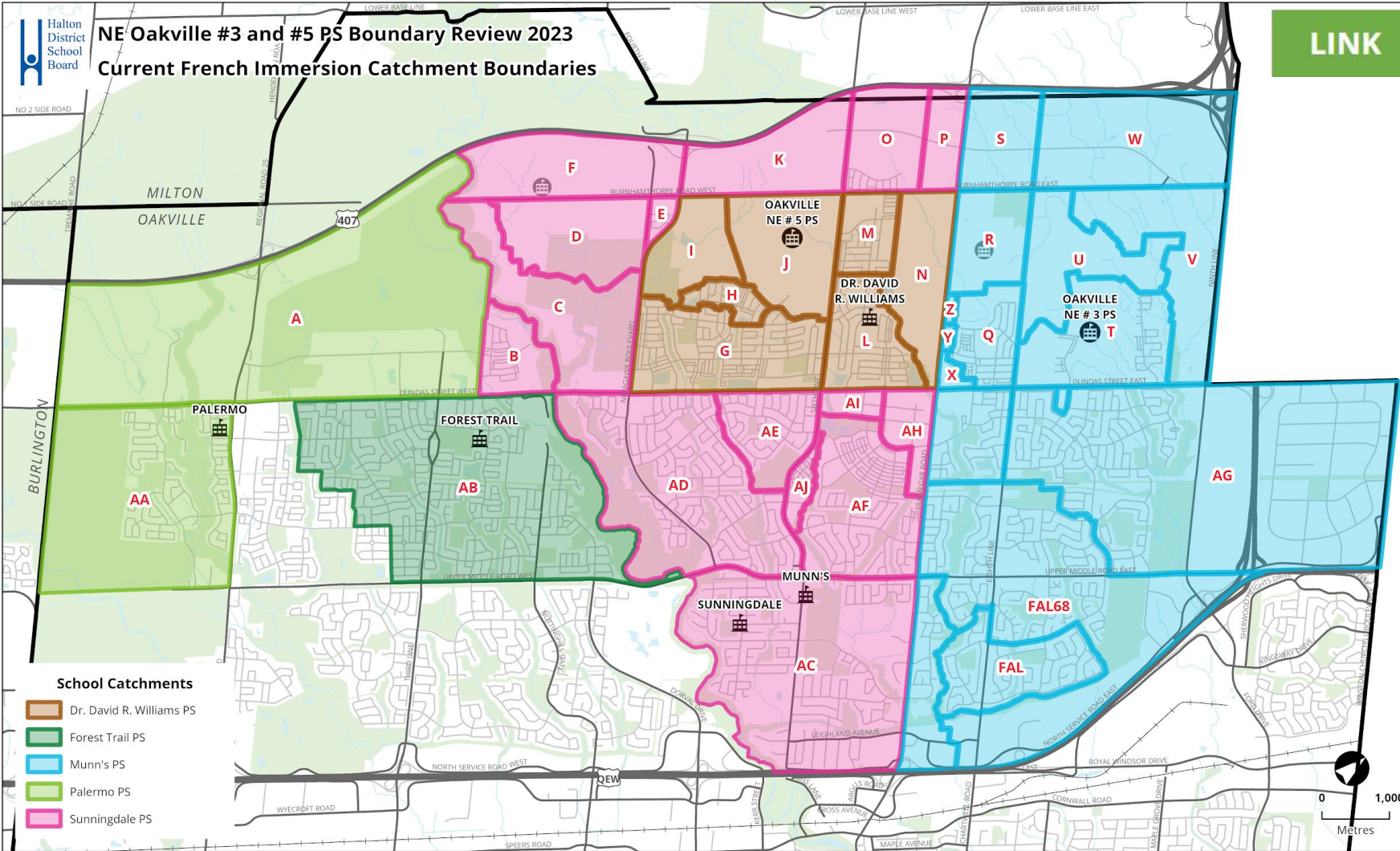


# SQ - FI Boundary



## NE Oakville #3 and #5 PS Boundary Review 2023 Current French Immersion Catchment Boundaries

[LINK](#)





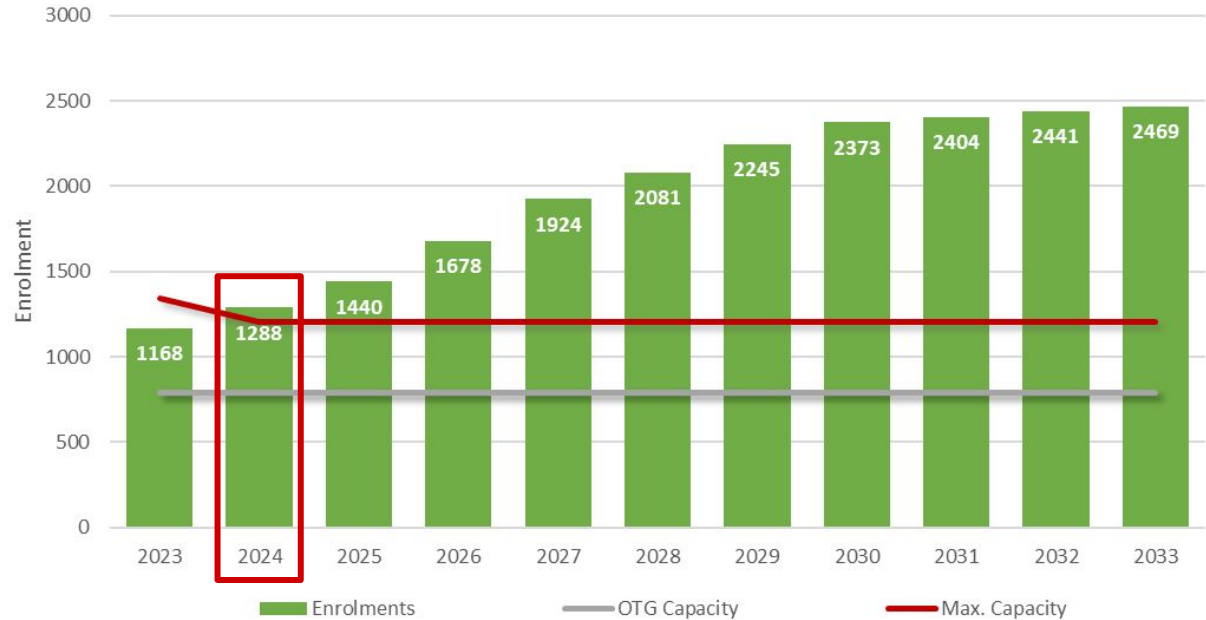
# Status Quo - Projections

[LINK](#)

## Dr. David R. Williams PS summary:

- School contains K-8 ENG and 2-8 FI programs
- Building Capacity: 792
- Maximum Capacity: 1206
- Portables required over the next 10 years; remains over Max Capacity

Dr. David R. Williams PS - Current



MAX PORTABLES: 18

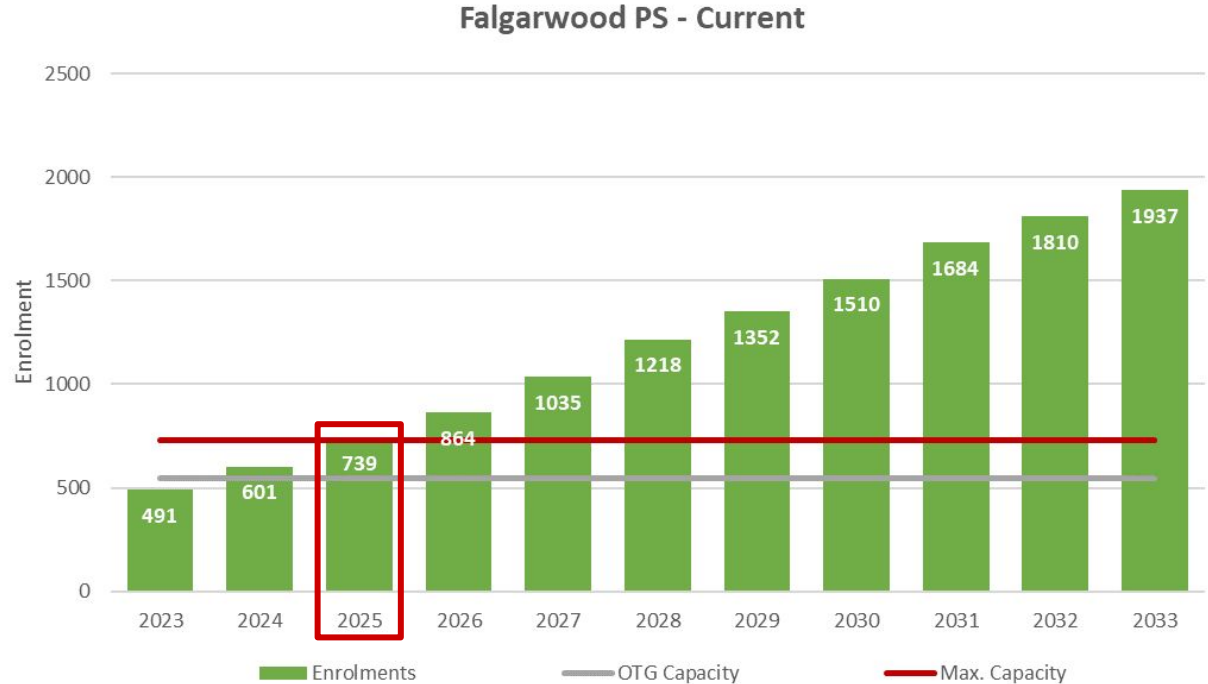
24	22	28	39	49	56	63	69	70	72	73
----	----	----	----	----	----	----	----	----	----	----

# Status Quo - Projections

[LINK](#)

## Falgarwood PS summary:

- School contains K-8 ENG and SPED programs
- Building Capacity: 545
- Maximum Capacity: 729
- Portables required over the next 10 years; reaches Max Capacity by 2025
- ENG holding school for areas north of Dundas St



**MAX PORTABLES: 8**

1	2	8	14	21	29	35	42	50	55	61
---	---	---	----	----	----	----	----	----	----	----



# Status Quo - Projections

[LINK](#)

## Forest Trail PS summary:

- School contains 2-8 FI program
- Building Capacity: 708
- Maximum Capacity: 984
- Portables not required

Forest Trail PS - Current



MAX PORTABLES: 12

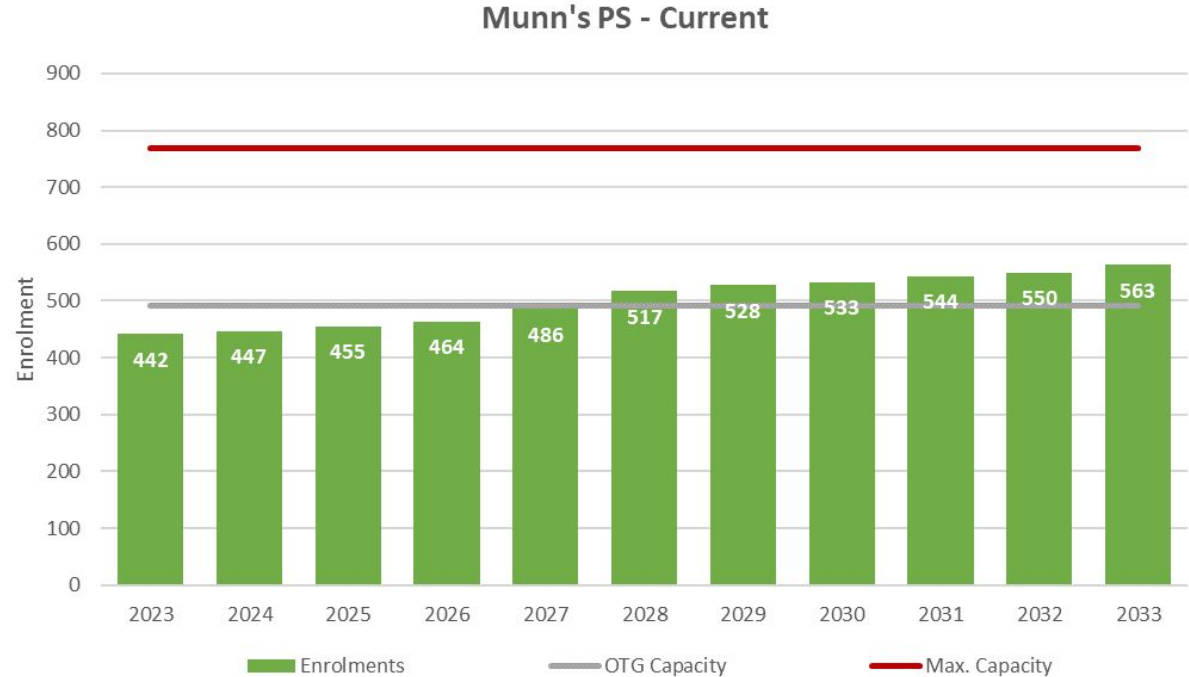
0	0	0	0	0	0	0	0	0	0	0
---	---	---	---	---	---	---	---	---	---	---

# Status Quo - Projections

[LINK](#)

## Munn's PS summary:

- School contains 2-8 FI program
- Building Capacity: 492
- Maximum Capacity: 768
- Portables required by 2028
- FI holding school for areas north of Dundas St



MAX PORTABLES: 12

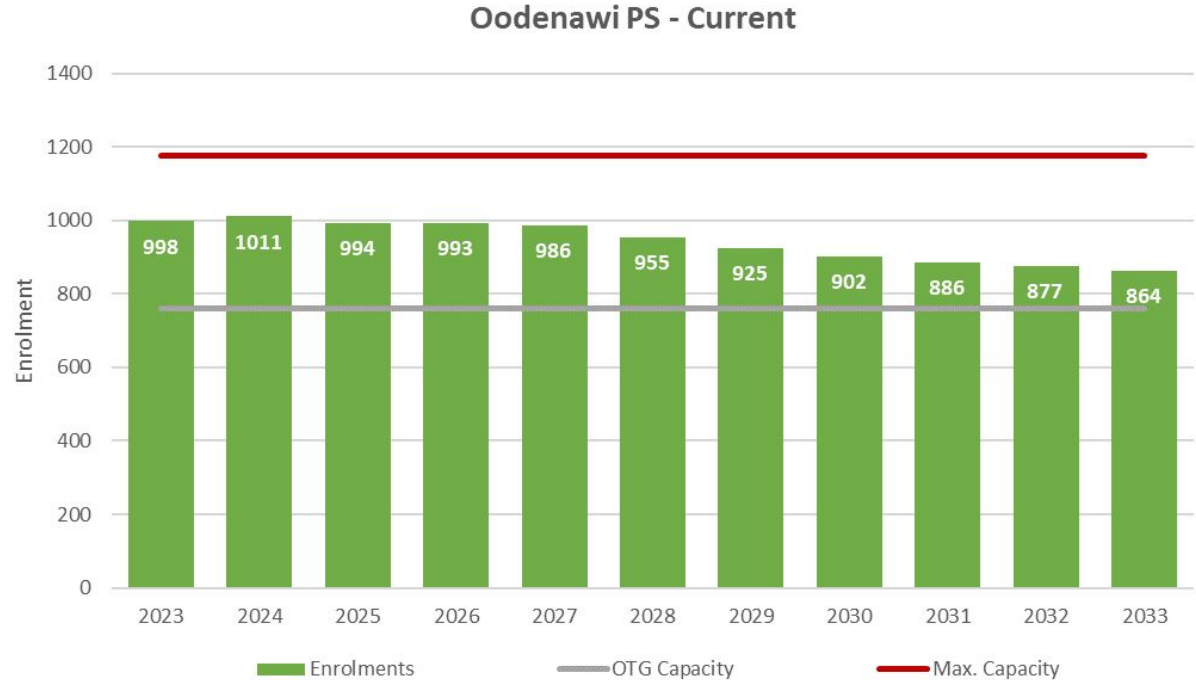
0	0	0	0	0	1	2	2	2	3	3
---	---	---	---	---	---	---	---	---	---	---

# Status Quo - Projections

[LINK](#)

## Oodenawi PS summary:

- Contains K-8 ENG and SPED programs
- Building Capacity: 762
- Maximum Capacity: 1176
- Portables required over the next 10 years



**MAX PORTABLES: 18**

12	11	10	10	10	8	7	6	5	5	4
----	----	----	----	----	---	---	---	---	---	---

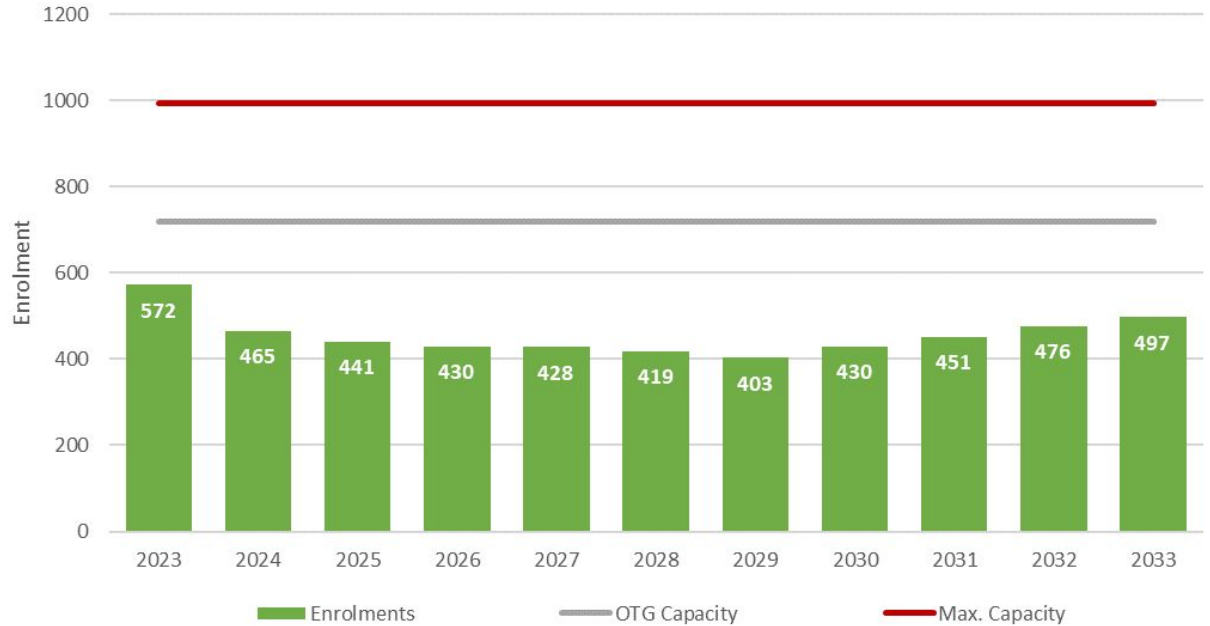
# Status Quo - Projections

[LINK](#)

## Palermo PS summary:

- School contains K-8 ENG, 2-8 FI and SPED programs
- Building Capacity: 718
- Maximum Capacity: 994
- Portables not required

Palermo PS - Current



MAX PORTABLES: 12

0	0	0	0	0	0	0	0	0	0	0
---	---	---	---	---	---	---	---	---	---	---

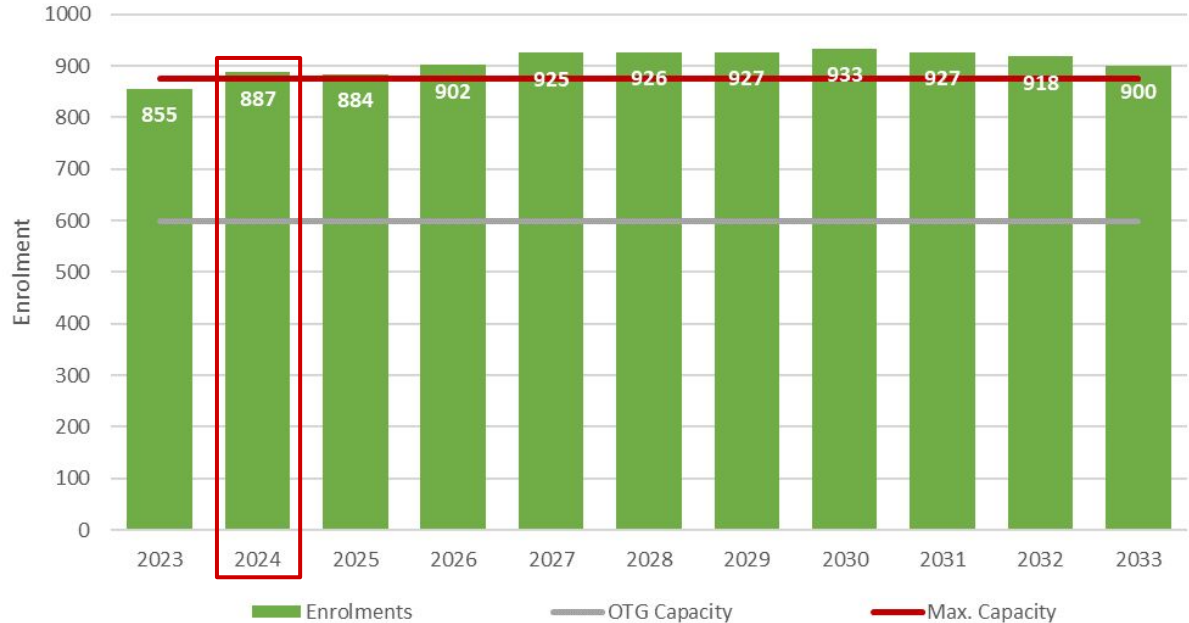
# Status Quo - Projections

[LINK](#)

## Post's Corners PS summary:

- School contains K-8 ENG and SPED programs
- Building Capacity: 600
- Maximum Capacity: 876
- Portables required over the next 10 years; reaches Max Capacity by 2024

Post's Corners PS - Current



MAX PORTABLES: 12

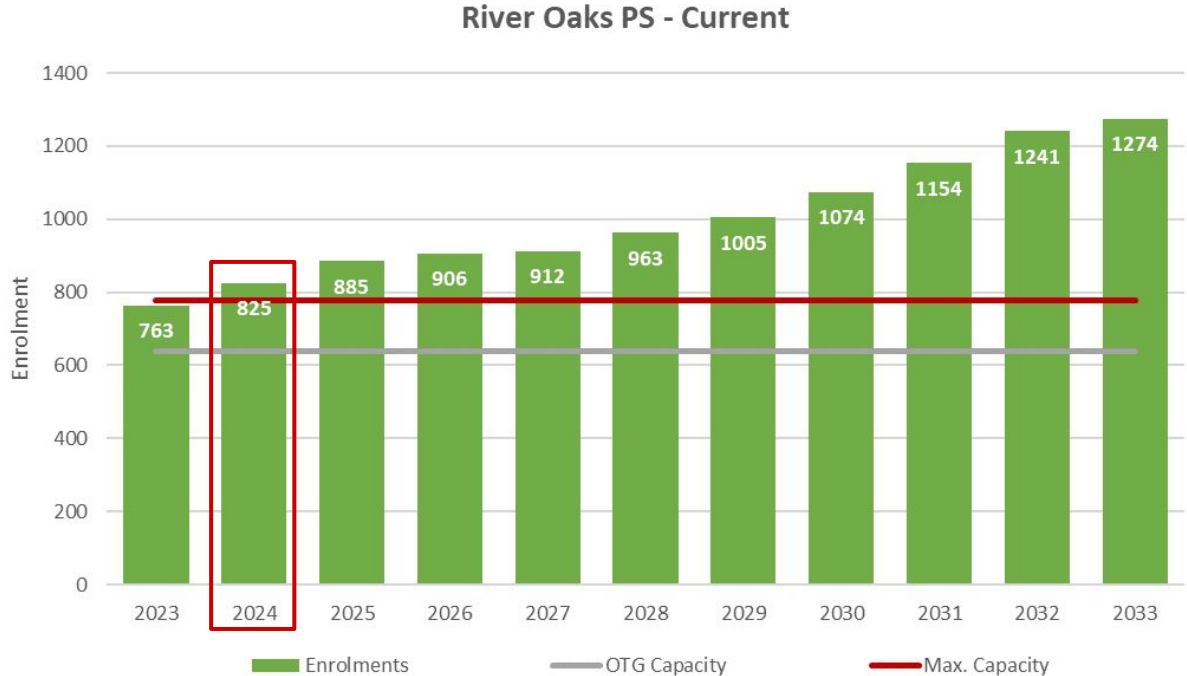
12	12	12	13	14	14	14	14	14	14	13
----	----	----	----	----	----	----	----	----	----	----

# Status Quo - Projections

[LINK](#)

## River Oaks PS summary:

- School contains K-8 ENG program
- Building Capacity: 639
- Maximum Capacity: 777
- Portables required over the next 10 years; reaches Max Capacity by 2024
- ENG holding school for areas north of Dundas St



**MAX PORTABLES: 6**

6	8	11	12	12	14	16	19	22	26	28
---	---	----	----	----	----	----	----	----	----	----

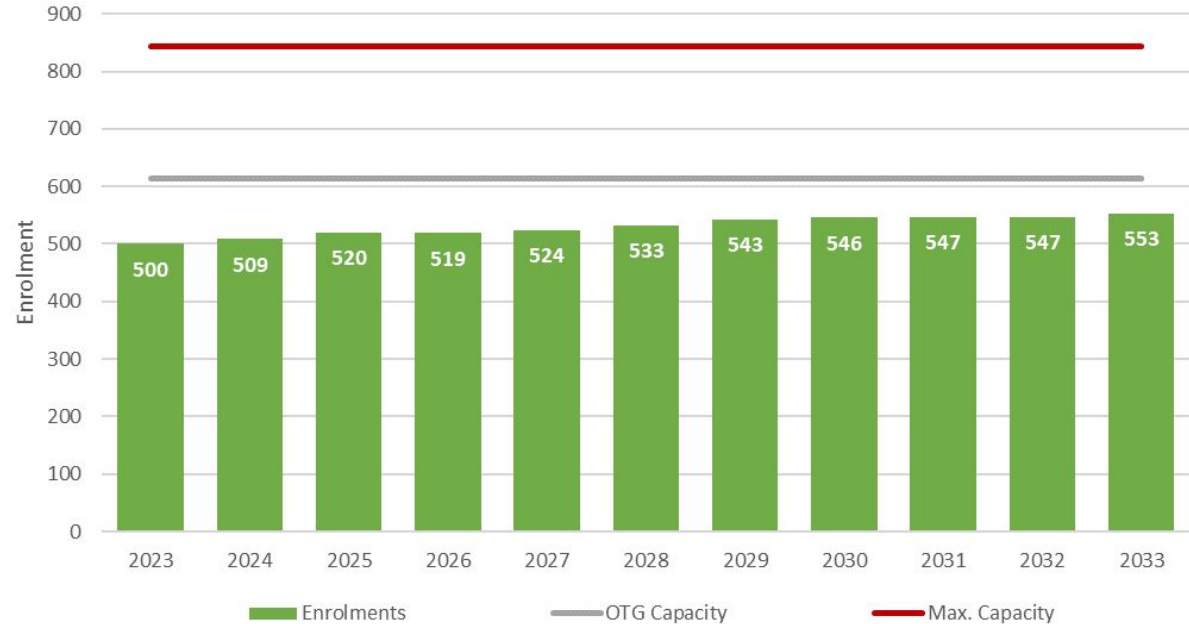
# Status Quo - Projections

[LINK](#)

## Sunningdale PS summary:

- School contains 2-8 FI program
- Building Capacity: 613
- Maximum Capacity: 843
- Portables not required
- FI holding school for areas north of Dundas St

Sunningdale PS - Current



**MAX PORTABLES: 10**

0	0	0	0	0	0	0	0	0	0	0
---	---	---	---	---	---	---	---	---	---	---

# Options 1 to 4

Initial Options to be Reviewed  
(discussion at Next BRC Meeting)



# Option 1

(CONTROL)

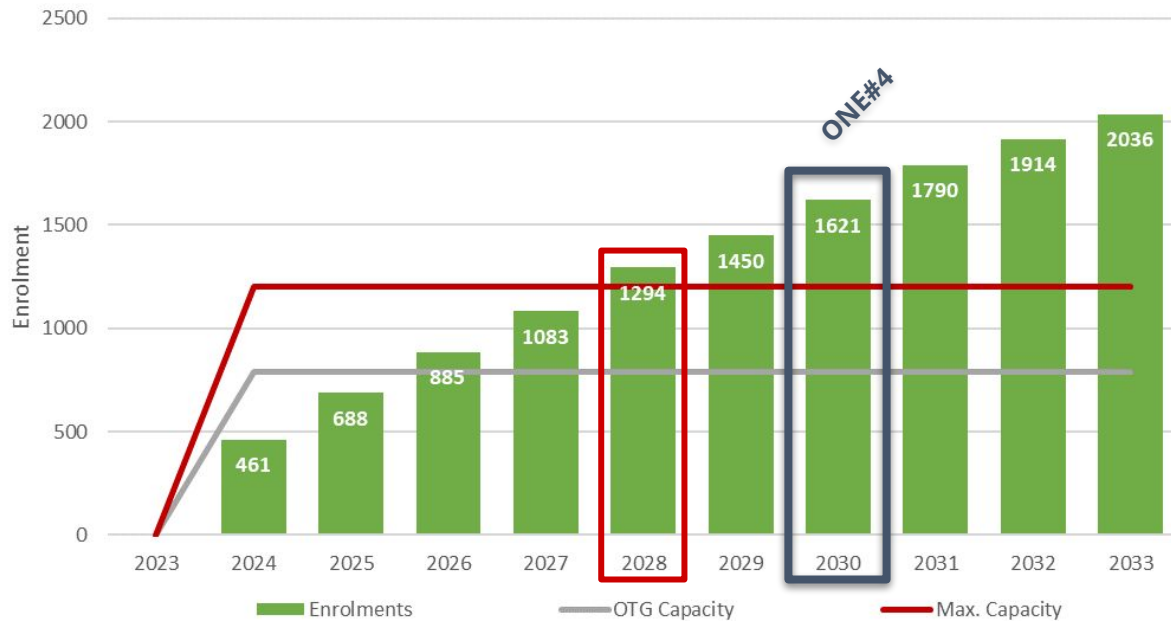
# Option 1 - Projections

[LINK](#)

## Oakville NE #3 PS summary:

- School opens Sept 2024; contains K-8 ENG and SPED programs
- Building Capacity: 788
- Maximum Capacity: 1202
- Portables required by 2026; reaches Max Capacity by 2028

Oakville NE #3 PS - Option 1



MAX PORTABLES: 18

-	0	0	4	13	22	29	36	44	49	54
---	---	---	---	----	----	----	----	----	----	----

# Option 1 - Projections

[LINK](#)

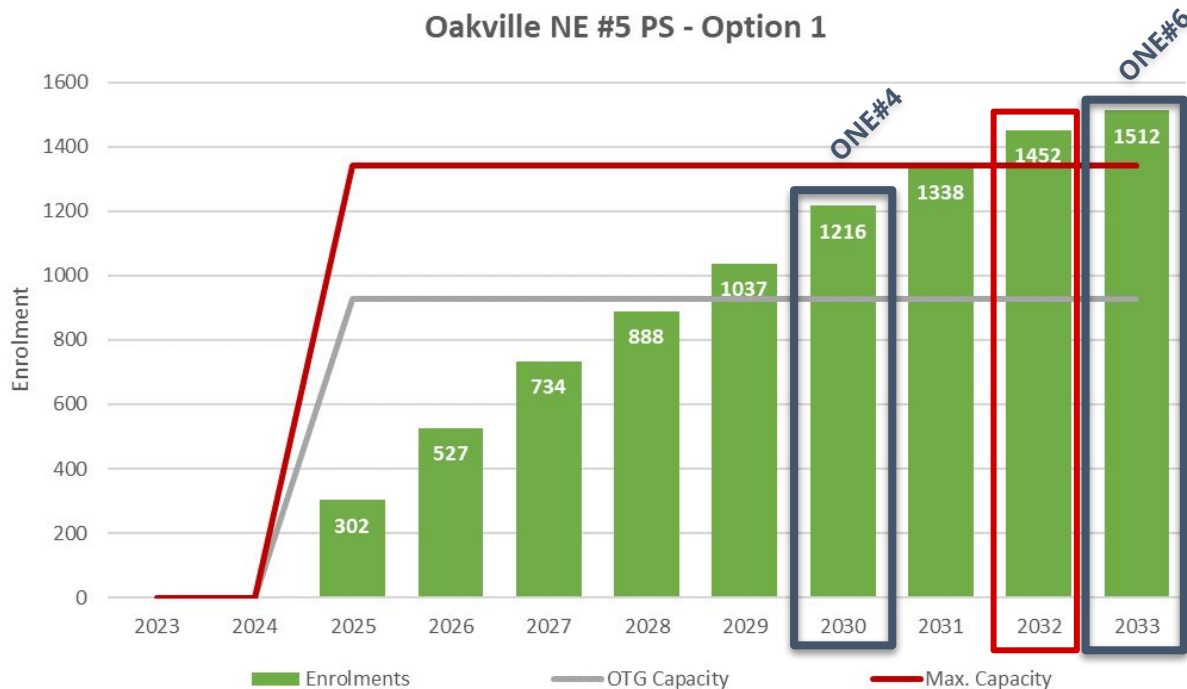
## Oakville NE #5 PS summary:

- School opens Sept 2025; contains K-8 ENG and SPED programs
- Building Capacity: 926\*
- Maximum Capacity: 1340\*
- Portables required by 2030; reaches Max Capacity by 2032

\*Currently approved for 788 building capacity. Assumes Ministry funding is approved for increased building capacity.

**MAX PORTABLES: 18**

Oakville NE #5 PS - Option 1



-	-	0	0	0	0	8	13	18	23	25
---	---	---	---	---	---	---	----	----	----	----

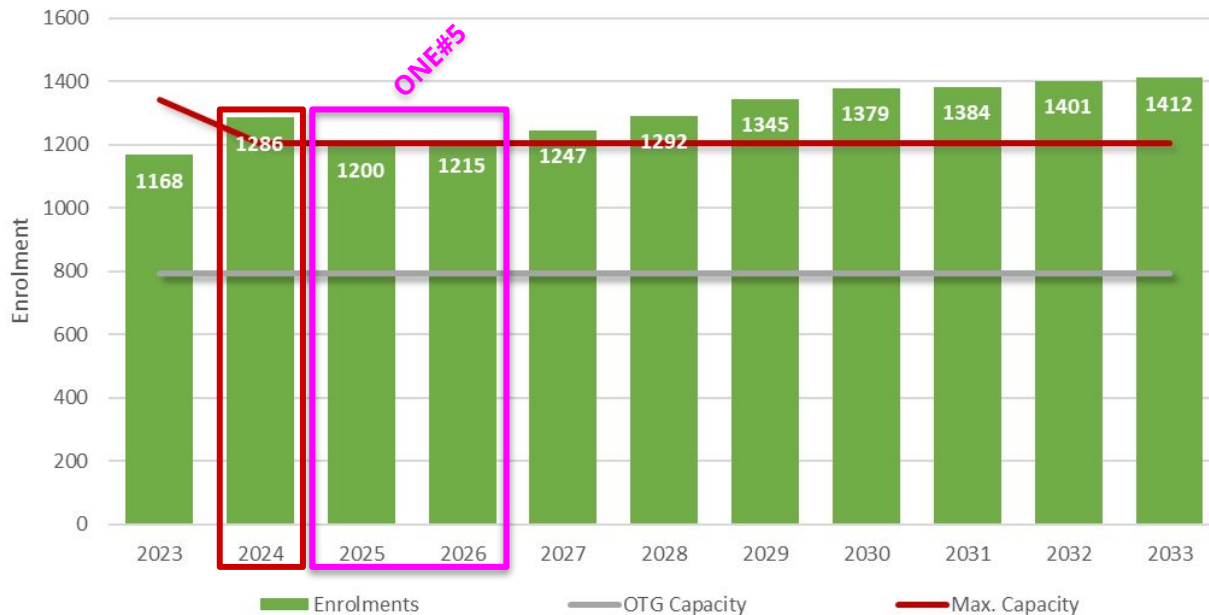
# Option 1 - Projections

[LINK](#)

## Dr. David R. Williams PS summary:

- School contains K-8 ENG and 2-8 FI programs
- Building Capacity: 792
- Maximum Capacity: 1206
- Portables required over the next 10 years; remains at or over Max Capacity

Dr. David R. Williams PS - Option 1



MAX PORTABLES: 18

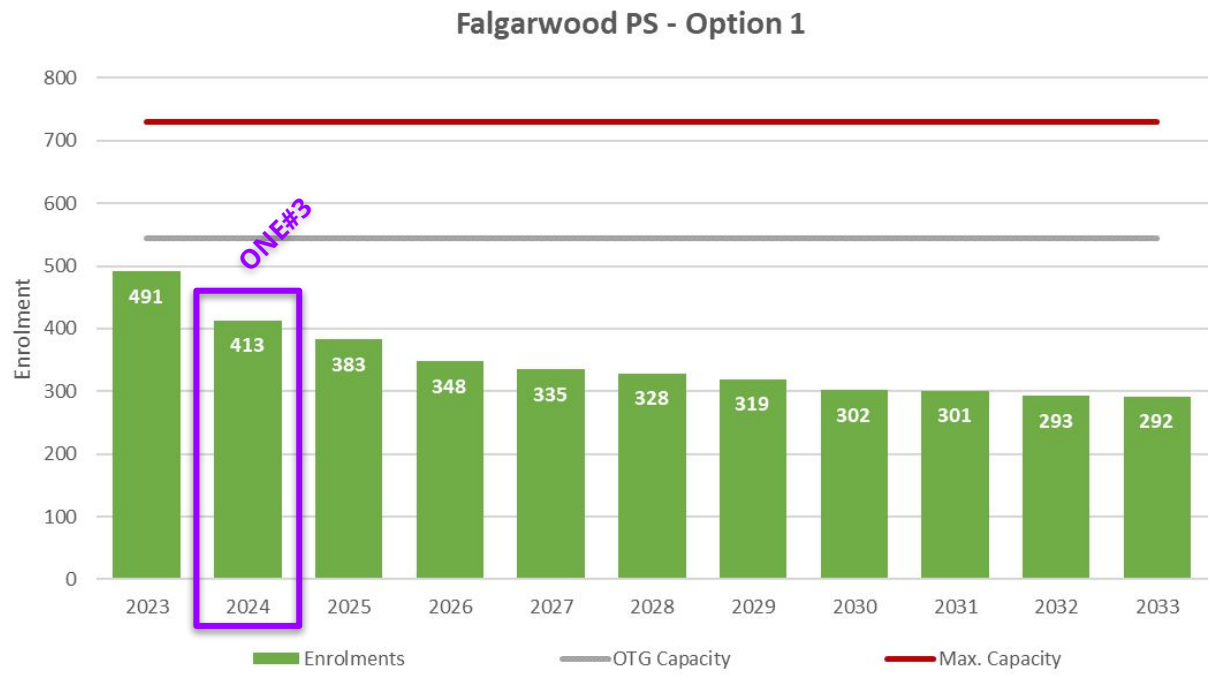
24	21	18	18	20	22	24	26	26	26	27
----	----	----	----	----	----	----	----	----	----	----

# Option 1 - Projections

[LINK](#)

## Falgarwood PS summary:

- School contains K-8 ENG and SPED programs
- Building Capacity: 545
- Maximum Capacity: 729
- Portables not required after 2023
- No longer an ENG holding school for areas north of Dundas St



MAX PORTABLES: 8

1	0	0	0	0	0	0	0	0	0	0
---	---	---	---	---	---	---	---	---	---	---

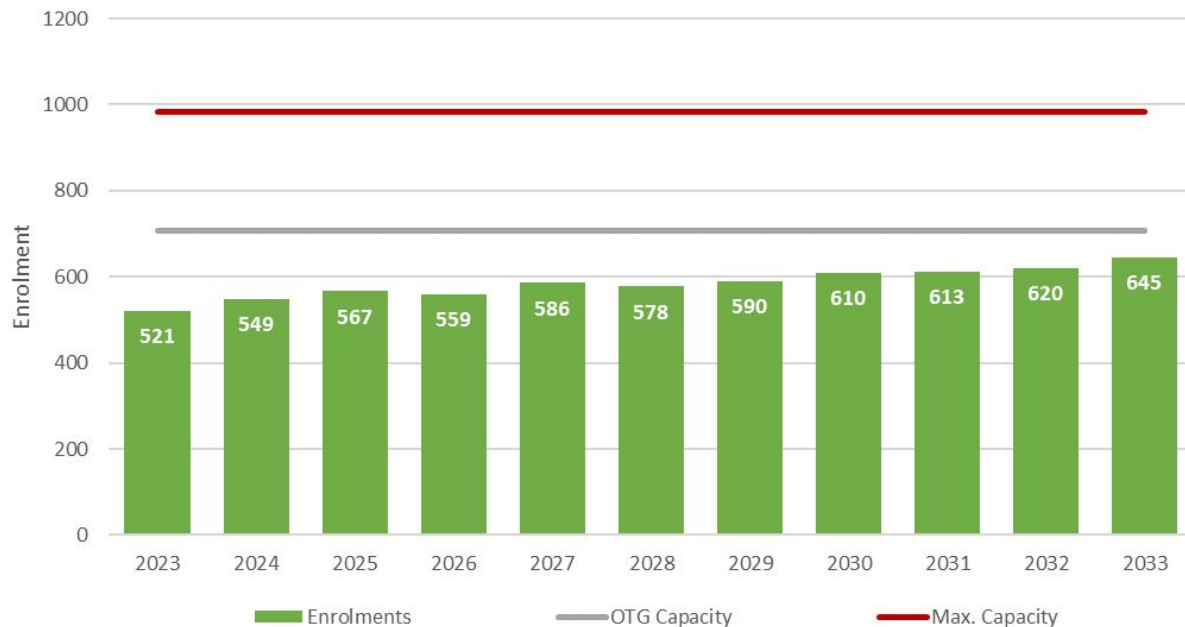
# Option 1 - Projections

[LINK](#)

## Forest Trail PS summary:

- School contains 2-8 FI program
- Building Capacity: 708
- Maximum Capacity: 984
- Portables not required

Forest Trail PS - Option 1



MAX PORTABLES: 12

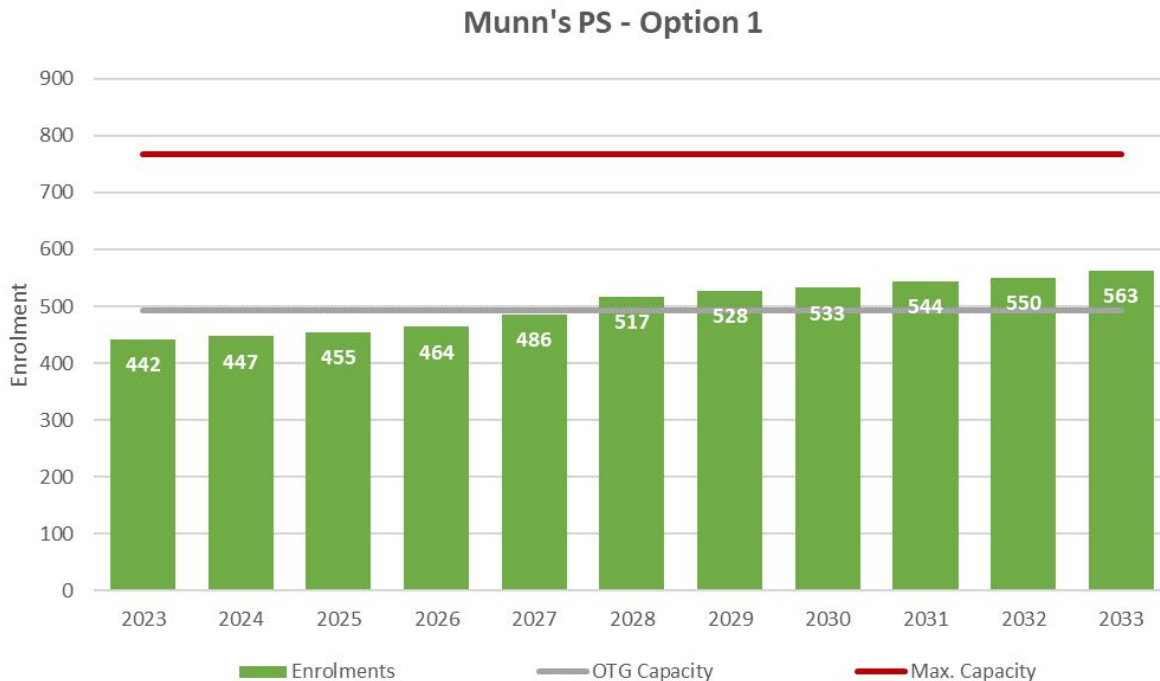
0	0	0	0	0	0	0	0	0	0	0
---	---	---	---	---	---	---	---	---	---	---

# Option 1 - Projections

[LINK](#)

## Munn's PS summary:

- School contains 2-8 FI program
- Building Capacity: 492
- Maximum Capacity: 768
- Portables required by 2028
- Continues to be a FI holding school for areas north of Dundas St



MAX PORTABLES: 12

0	0	0	0	0	1	2	2	2	3	3
---	---	---	---	---	---	---	---	---	---	---

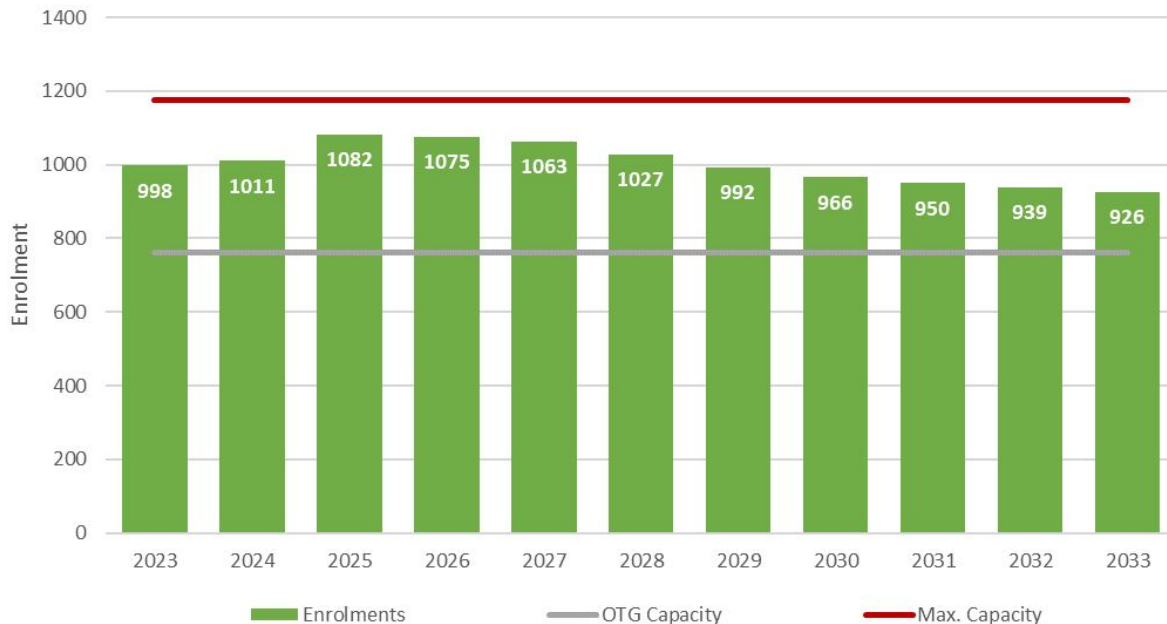
# Option 1 - Projections

[LINK](#)

## Oodenawi PS summary:

- School contains K-8 ENG and SPED programs
- Building Capacity: 762
- Maximum Capacity: 1176
- Portables required over the next 10 years

Oodenawi PS - Option 1



**MAX PORTABLES: 18**

12	11	14	14	13	12	10	9	8	8	7
----	----	----	----	----	----	----	---	---	---	---



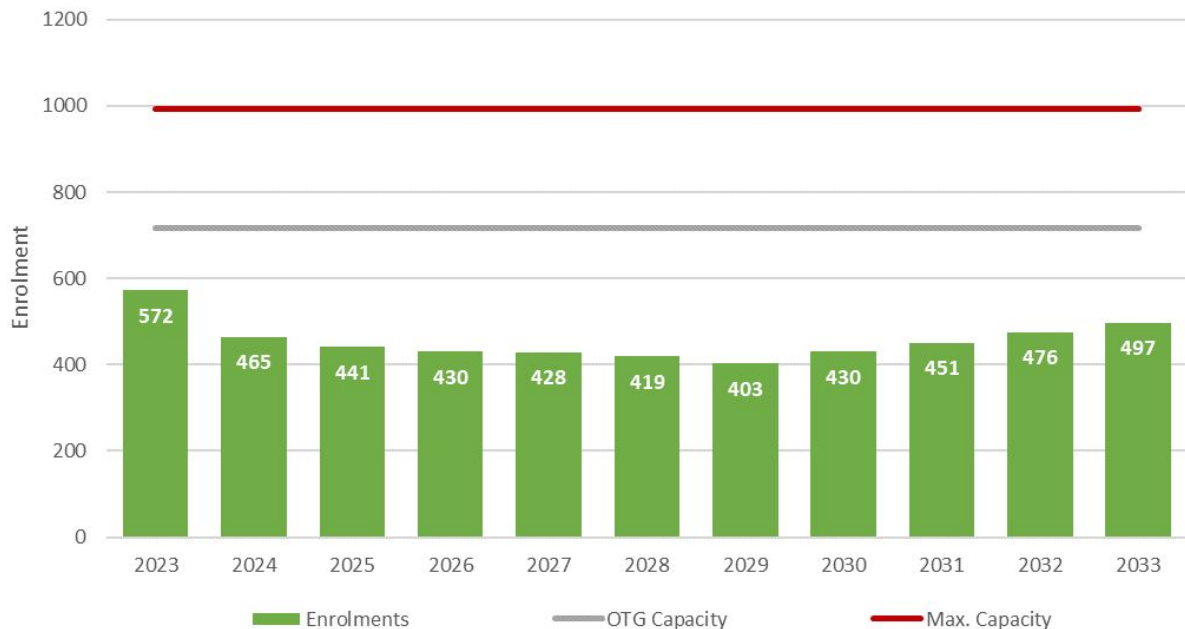
# Option 1 - Projections

[LINK](#)

## Palermo PS summary:

- School contains K-8 ENG, 2-8 FI and SPED programs
- Building Capacity: 718
- Maximum Capacity: 994
- Portables not required

Palermo PS - Option 1



MAX PORTABLES: 12

0	0	0	0	0	0	0	0	0	0	0
---	---	---	---	---	---	---	---	---	---	---

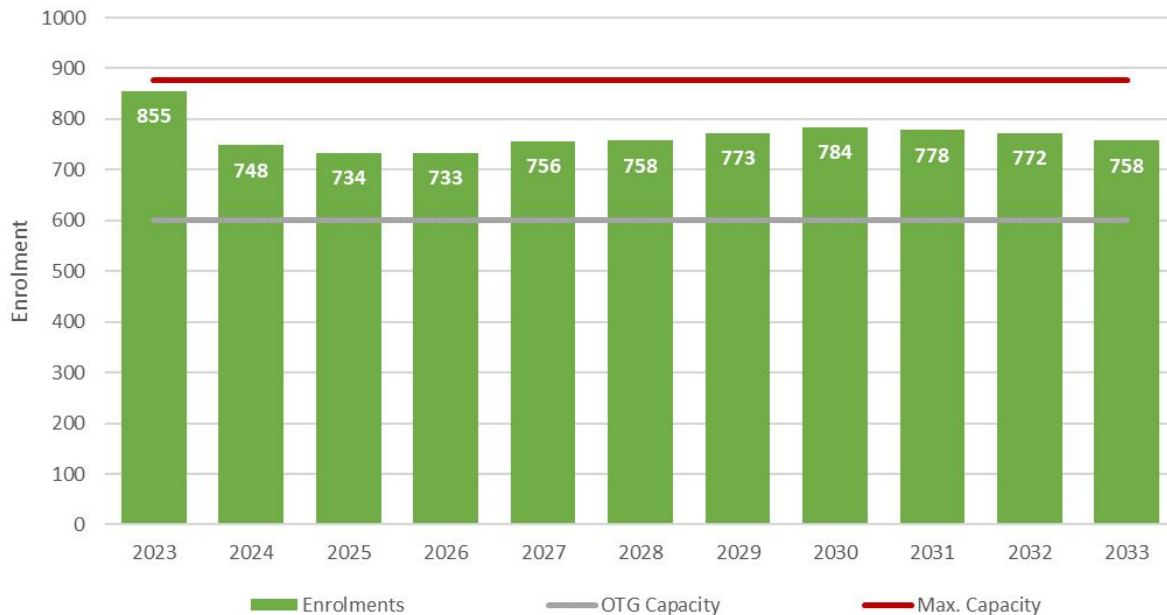
# Option 1 - Projections

[LINK](#)

## Post's Corners PS summary:

- School contains K-8 ENG and SPED programs
- Building Capacity: 600
- Maximum Capacity: 876
- Portables required over the next 10 years

Post's Corners PS - Option 1



MAX PORTABLES: 12

12	6	6	6	7	7	8	8	8	7	7
----	---	---	---	---	---	---	---	---	---	---

# Option 1 - Projections

LINK

## River Oaks PS

### summary:

- School contains K-8 ENG program
- Building Capacity: 639
- Maximum Capacity: 777
- Portables not required after 2024
- No longer an ENG holding school for areas north of Dundas St

River Oaks PS - Option 1



MAX PORTABLES: 6

6	2	0	0	0	0	0	0	0	0	0
---	---	---	---	---	---	---	---	---	---	---

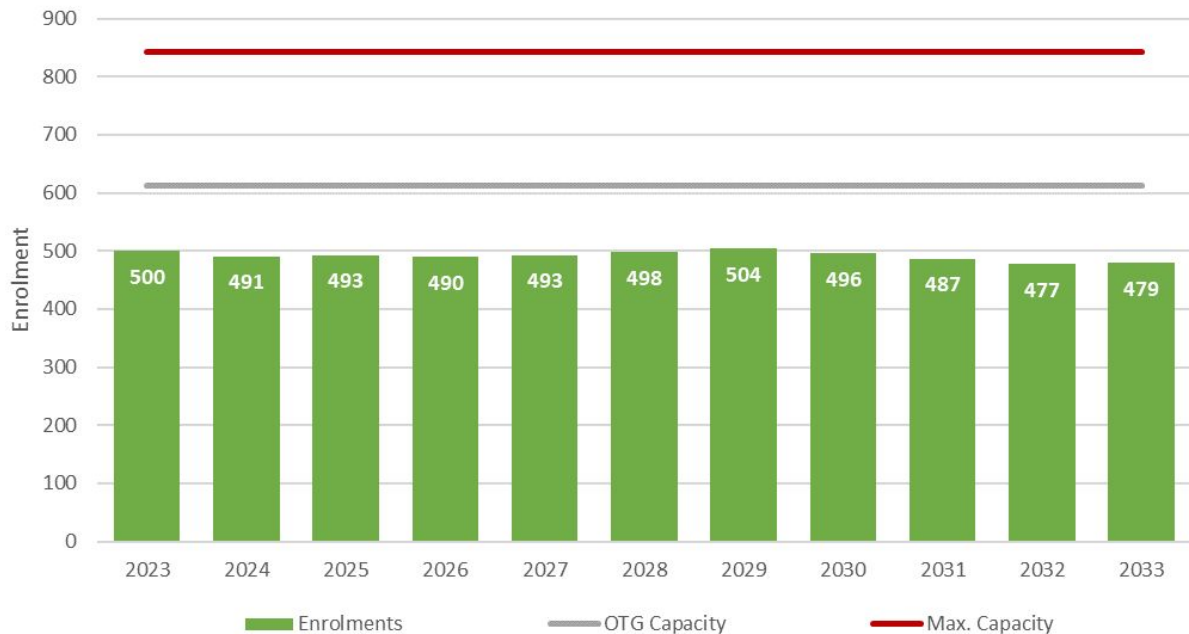
# Option 1 - Projections

[LINK](#)

## Sunningdale PS summary:

- School contains 2-8 FI program
- Building Capacity: 613
- Maximum Capacity: 843
- Portables not required
- No longer an FI holding school for areas north of Dundas St

Sunningdale PS - Option 1



MAX PORTABLES: 10

0	0	0	0	0	0	0	0	0	0	0
---	---	---	---	---	---	---	---	---	---	---

# Option 2

(REDUCED FI IN THE NORTH)

# Option 2 - Projections

[LINK](#)

## Oakville NE #3 PS summary:

- School opens Sept 2024; contains K-8 ENG and SPED programs
- Building Capacity: 788
- Maximum Capacity: 1202
- Portables required by 2027

Oakville NE #3 PS - Option 2



MAX PORTABLES: 18

-	0	0	0	5	9	12	13	14	15	16
---	---	---	---	---	---	----	----	----	----	----

# Option 2 - Projections

[LINK](#)

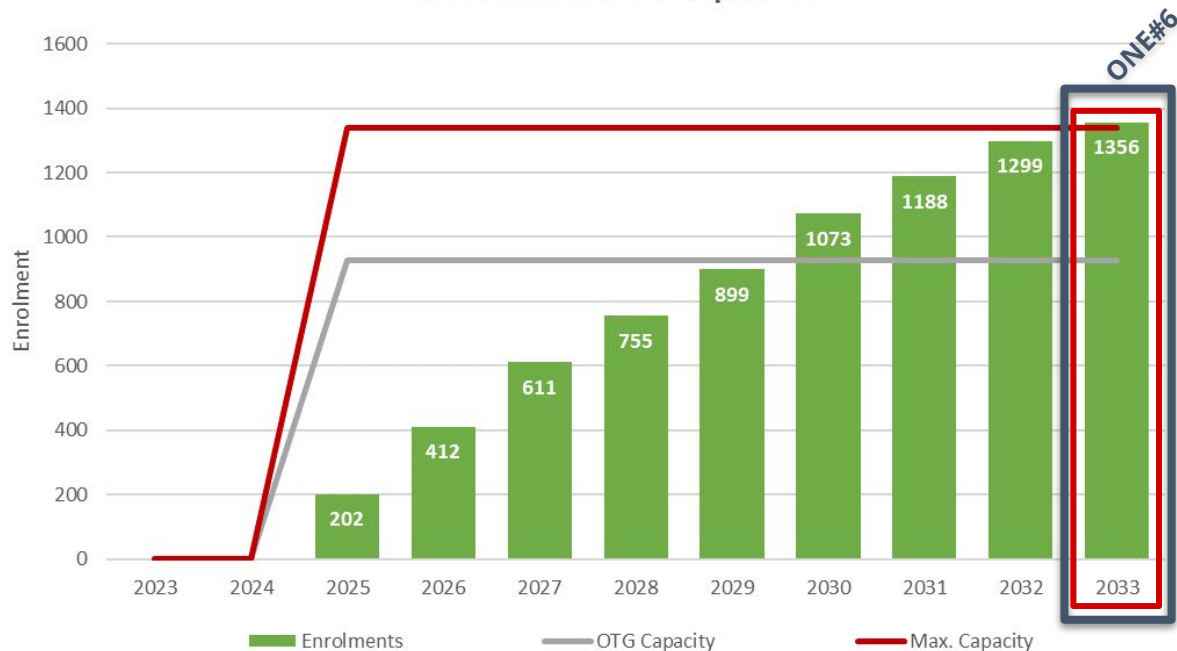
## Oakville NE #5 PS summary:

- School opens Sept 2025; contains K-8 ENG and SPED programs
- Building Capacity: 926\*
- Maximum Capacity: 1340\*
- Portables required by 2030; reaches Max Capacity by 2033

\*Currently approved for 788 building capacity. Assumes Ministry funding is approved for increased building capacity

**MAX PORTABLES: 18**

Oakville NE #5 PS - Option 2



-	0	0	0	0	0	0	6	11	16	19
---	---	---	---	---	---	---	---	----	----	----

# Option 2 - Projections

[LINK](#)

## Dr. David R. Williams PS summary:

- School contains K-8 ENG and 2-8 FI programs
- Building Capacity: 792
- Maximum Capacity: 1206
- Portables required over the next 10 years; reaches Max Capacity by 2030

Dr. David R. Williams PS - Option 2



MAX PORTABLES: 18

24	13	9	10	12	14	17	18	19	20	20
----	----	---	----	----	----	----	----	----	----	----



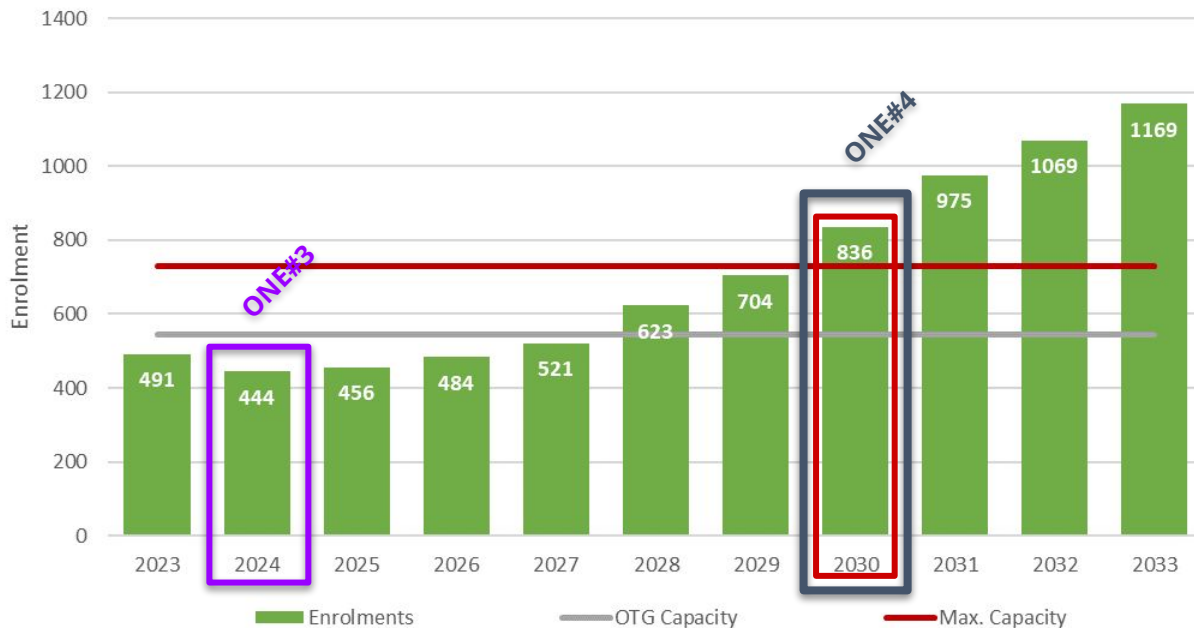
# Option 2 - Projections

[LINK](#)

## Falgarwood PS summary:

- School contains K-8 ENG and SPED programs
- Building Capacity: 545
- Maximum Capacity: 729
- Portables required by 2028; reached Max Capacity by 2030
- Continues to be an ENG holding school for areas north of Dundas St

Falgarwood PS - Option 2



MAX PORTABLES: 8

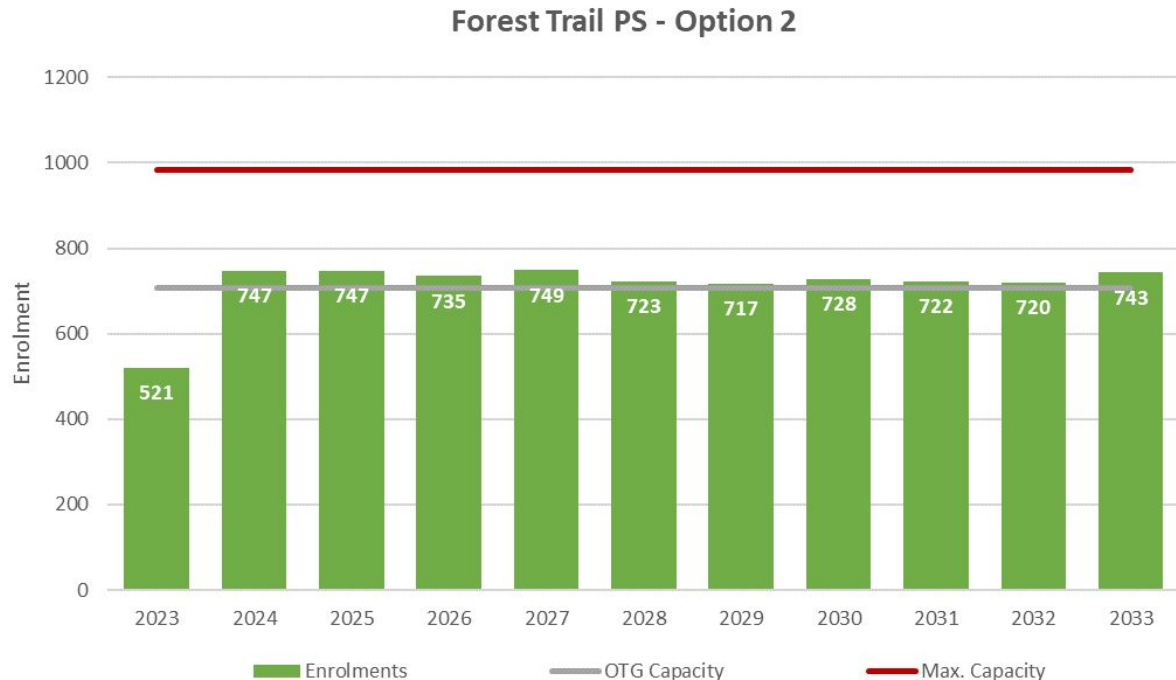
1	0	0	0	0	3	7	13	19	23	27
---	---	---	---	---	---	---	----	----	----	----

# Option 2 - Projections

[LINK](#)

## Forest Trail PS summary:

- School contains 2-8 FI program
- Building Capacity: 708
- Maximum Capacity: 984
- Portables required over the next 10 years



**MAX PORTABLES: 12**

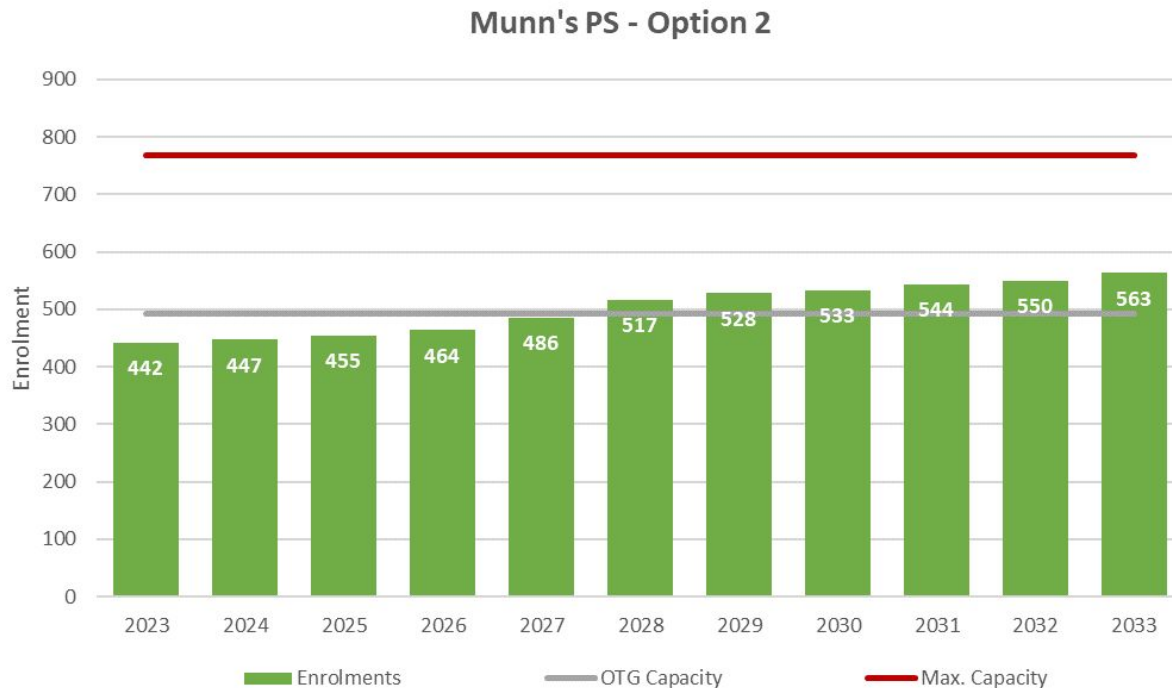
0	2	2	1	2	1	0	1	1	1	2
---	---	---	---	---	---	---	---	---	---	---

# Option 2 - Projections

[LINK](#)

## Munn's PS summary:

- School contains 2-8 FI program
- Building Capacity: 492
- Maximum Capacity: 768
- Portables required by 2028
- Continues to be a FI holding school for areas north of Dundas St



MAX PORTABLES: 12

0	0	0	0	0	1	2	2	2	3	3
---	---	---	---	---	---	---	---	---	---	---

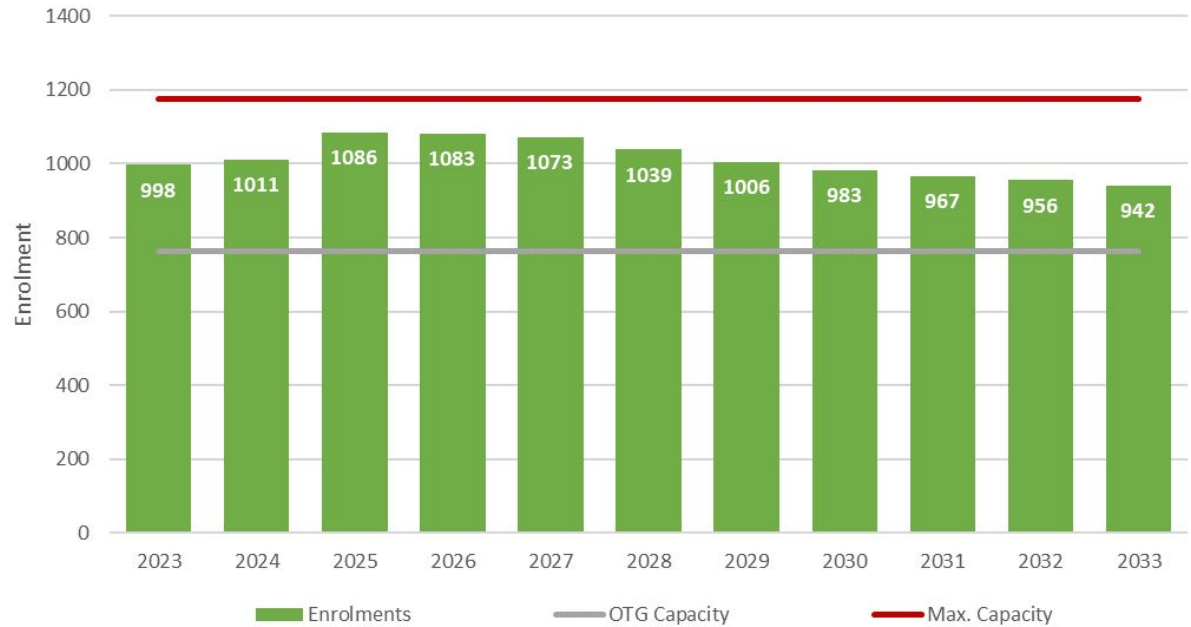
# Option 2 - Projections

[LINK](#)

## Oodenawi PS summary:

- School contains K-8 ENG and SPED programs
- Building Capacity: 762
- Maximum Capacity: 1176
- Portables required over the next 10 years

Oodenawi PS - Option 2



**MAX PORTABLES: 18**

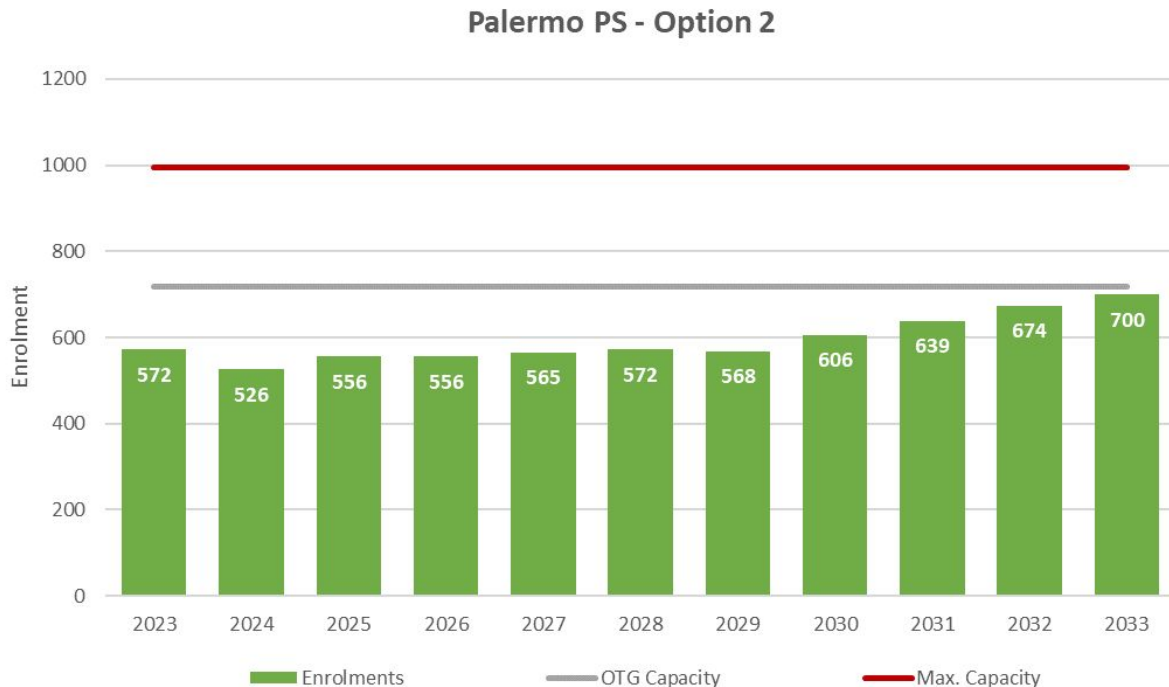
12	11	14	14	14	12	11	10	9	8	8
----	----	----	----	----	----	----	----	---	---	---

# Option 2 - Projections

[LINK](#)

## Palermo PS summary:

- School contains K-8 ENG, 2-8 FI and SPED programs
- Building Capacity: 718
- Maximum Capacity: 994
- Portables not required



MAX PORTABLES: 12

0	0	0	0	0	0	0	0	0	0	0
---	---	---	---	---	---	---	---	---	---	---

# Option 2 - Projections

[LINK](#)

## Post's Corners PS summary:

- School contains K-8 ENG and SPED programs
- Building Capacity: 600
- Maximum Capacity: 876
- Portables required until 2027

Post's Corners PS - Option 2



MAX PORTABLES: 12

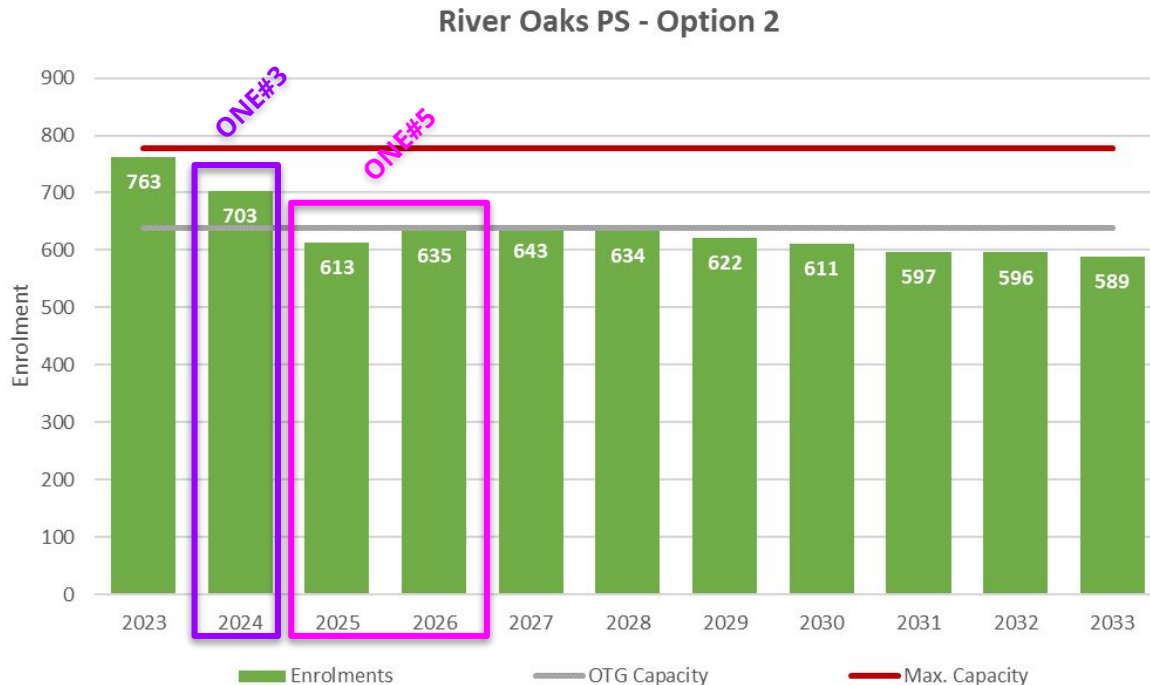
12	3	2	1	1	0	0	0	0	0	0
----	---	---	---	---	---	---	---	---	---	---

# Option 2 - Projections

LINK

## River Oaks PS summary:

- School contains K-8 ENG program
- Building Capacity: 639
- Maximum Capacity: 777
- Portables not required after 2024
- No longer an ENG holding school for areas north of Dundas St



MAX PORTABLES: 6

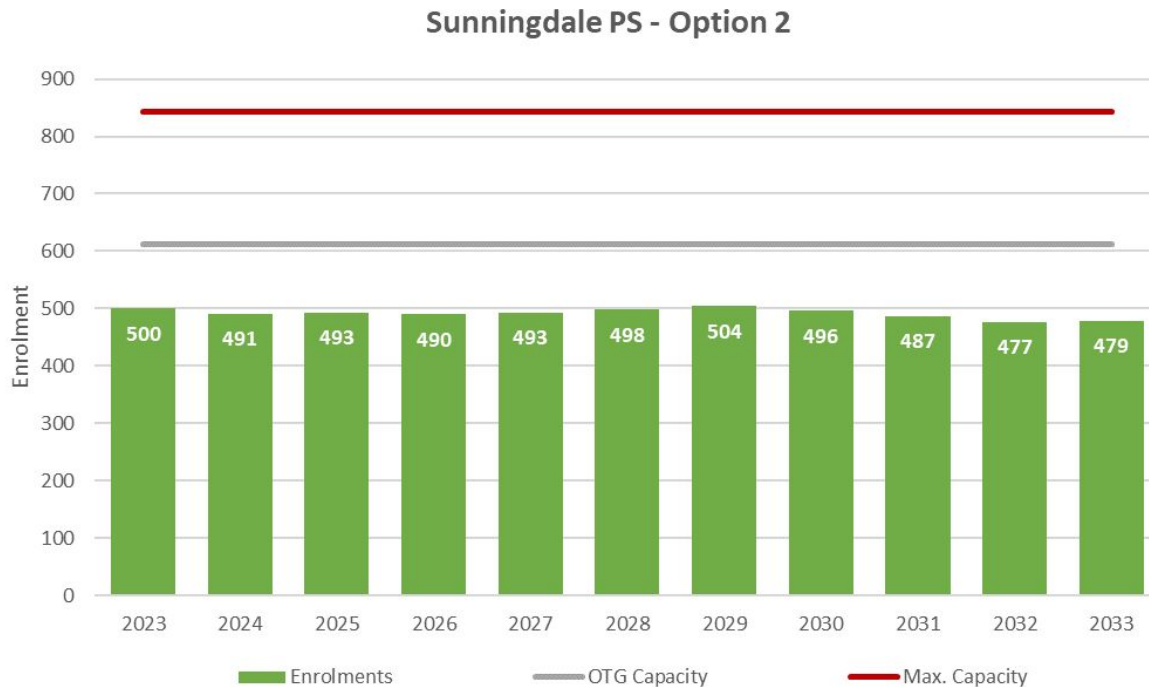
6	3	0	0	0	0	0	0	0	0	0
---	---	---	---	---	---	---	---	---	---	---

# Option 2 - Projections

[LINK](#)

## Sunningdale PS summary:

- School contains 2-8 FI program
- Building Capacity: 613
- Maximum Capacity: 843
- Portables not required
- No longer an FI holding schools for areas north of Dundas St



MAX PORTABLES: 10

0	0	0	0	0	0	0	0	0	0	0
---	---	---	---	---	---	---	---	---	---	---



# Option 3

(NO FI IN THE NORTH)

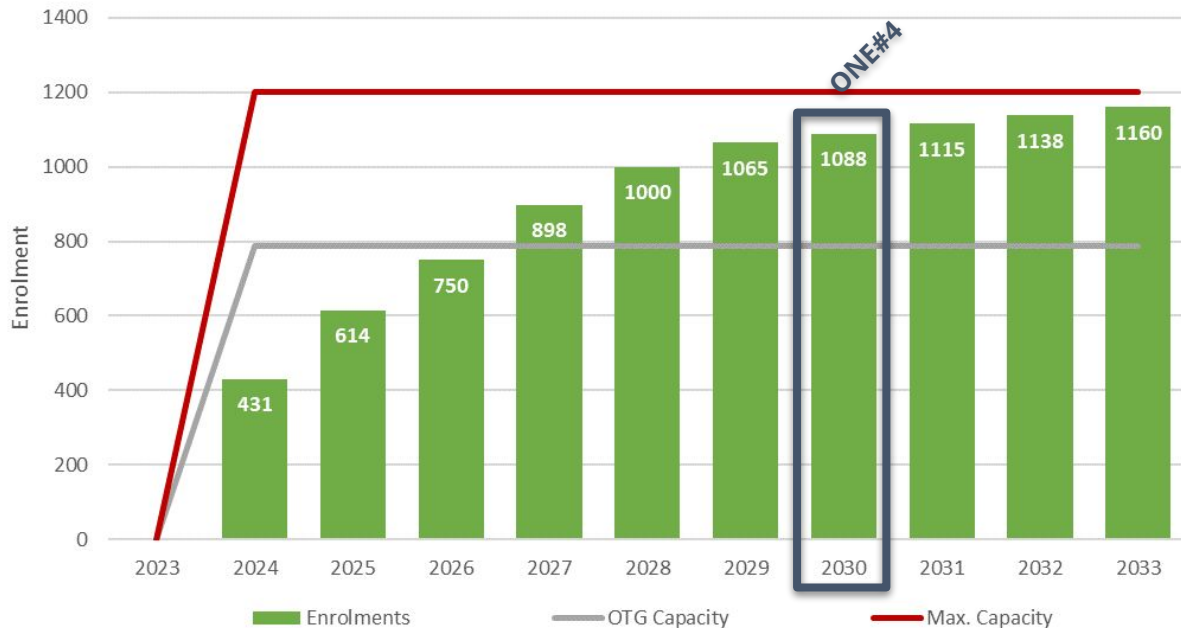
# Option 3 - Projections

[LINK](#)

## Oakville NE #3 PS summary:

- School opens Sept 2024; contains K-8 ENG and SPED programs
- Building Capacity: 788
- Maximum Capacity: 1202
- Portables required by 2027

Oakville NE #3 PS - Option 3



MAX PORTABLES: 18

-	0	0	0	5	9	12	13	14	15	16
---	---	---	---	---	---	----	----	----	----	----

# Option 3 - Projections

[LINK](#)

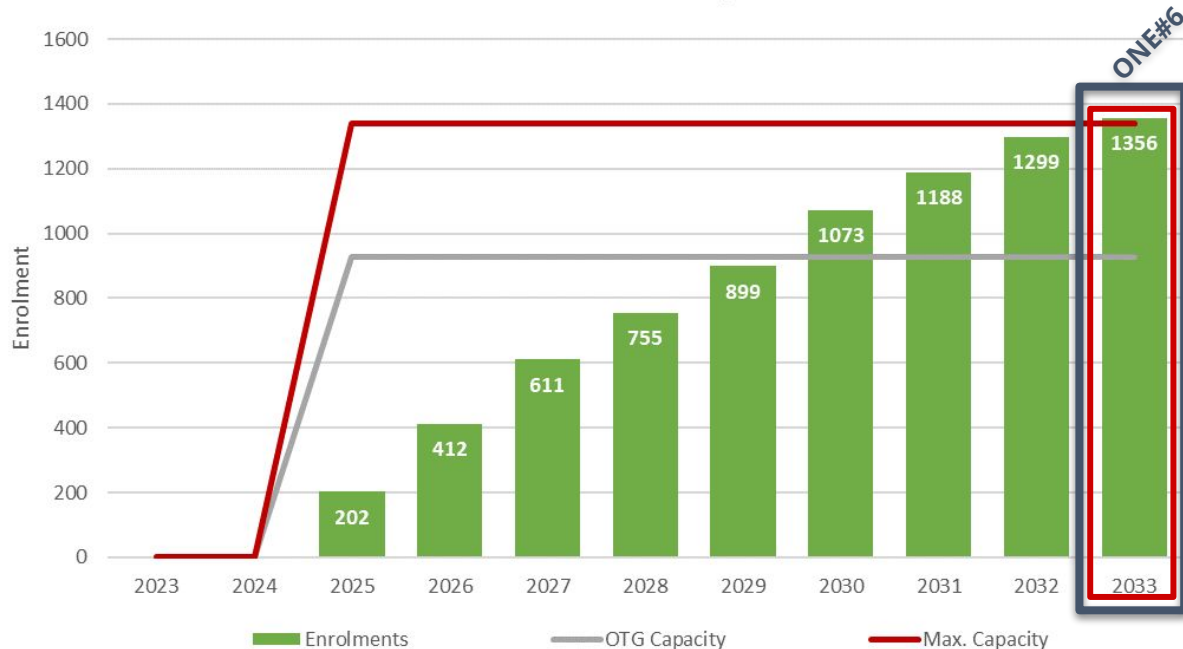
## Oakville NE #5 PS summary:

- School opens Sept 2025; contains K-8 ENG and SPED programs
- Building Capacity: 926\*
- Maximum Capacity: 1340\*
- Portables required by 2030; reaches Max Capacity by 2033

\*Currently approved for 788 building capacity. Assumes Ministry funding is approved for increased building capacity

**MAX PORTABLES: 18**

Oakville NE #5 PS - Option 3



-	-	0	0	0	0	0	6	11	16	19
---	---	---	---	---	---	---	---	----	----	----

# Option 3 - Projections

[LINK](#)

## Dr. David R. Williams PS summary:

- School contains K-8 ENG program; FI students directed to Sunningdale PS
- Building Capacity: 792
- Maximum Capacity: 1206
- Portables required over the next 10 years

Dr. David R. Williams PS - Option 3



MAX PORTABLES: 18

24	7	1	2	4	6	9	11	12	13	13
----	---	---	---	---	---	---	----	----	----	----

# Option 3 - Projections

[LINK](#)

## Falgarwood PS summary:

- School contains K-8 ENG and SPED programs
- Building Capacity: 545
- Maximum Capacity: 729
- Portables required by 2028; reached Max Capacity by 2030
- Continues to be an ENG holding school for areas north of Dundas St

Falgarwood PS - Option 3



MAX PORTABLES: 8

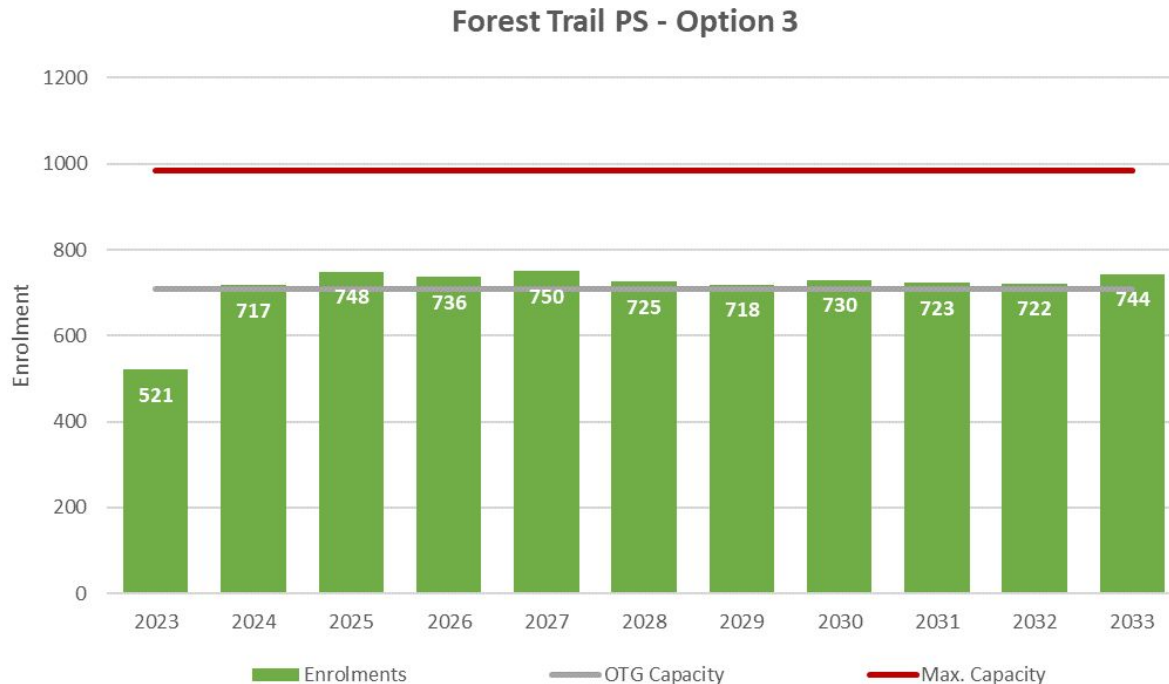
1	0	0	0	0	3	7	13	19	23	27
---	---	---	---	---	---	---	----	----	----	----

# Option 3 - Projections

[LINK](#)

## Forest Trail PS summary:

- School contains 2-8 FI program
- Building Capacity: 708
- Maximum Capacity: 984
- Portables required over the next 10 years



**MAX PORTABLES: 12**

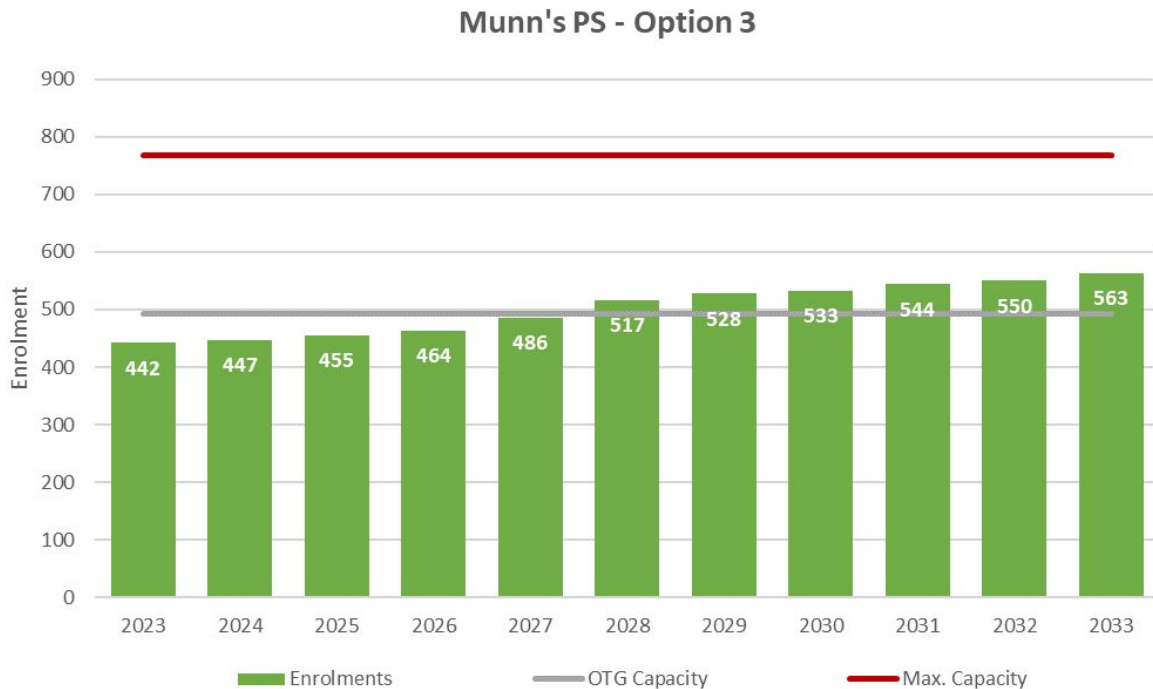
0	0	2	1	2	1	0	1	1	1	2
---	---	---	---	---	---	---	---	---	---	---

# Option 3 - Projections

[LINK](#)

## Munn's PS summary:

- School contains 2-8 FI program
- Building Capacity: 492
- Maximum Capacity: 768
- Portables required by 2028
- Continues to be a FI holding school for areas north of Dundas St



MAX PORTABLES: 12

0	0	0	0	0	1	2	2	2	3	3
---	---	---	---	---	---	---	---	---	---	---

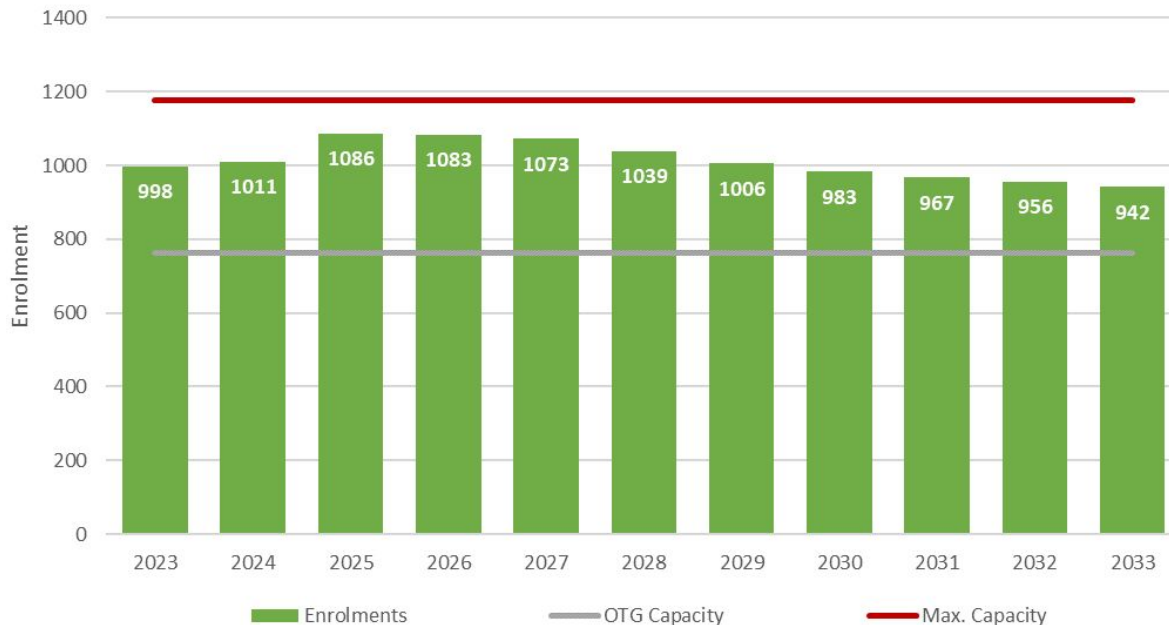
# Option 3 - Projections

[LINK](#)

## Oodenawi PS summary:

- School contains K-8 ENG and SPED programs
- Building Capacity: 762
- Maximum Capacity: 1176
- Portables required over the next 10 years

Oodenawi PS - Option 3



**MAX PORTABLES: 18**

12	11	14	14	14	12	11	10	9	8	8
----	----	----	----	----	----	----	----	---	---	---

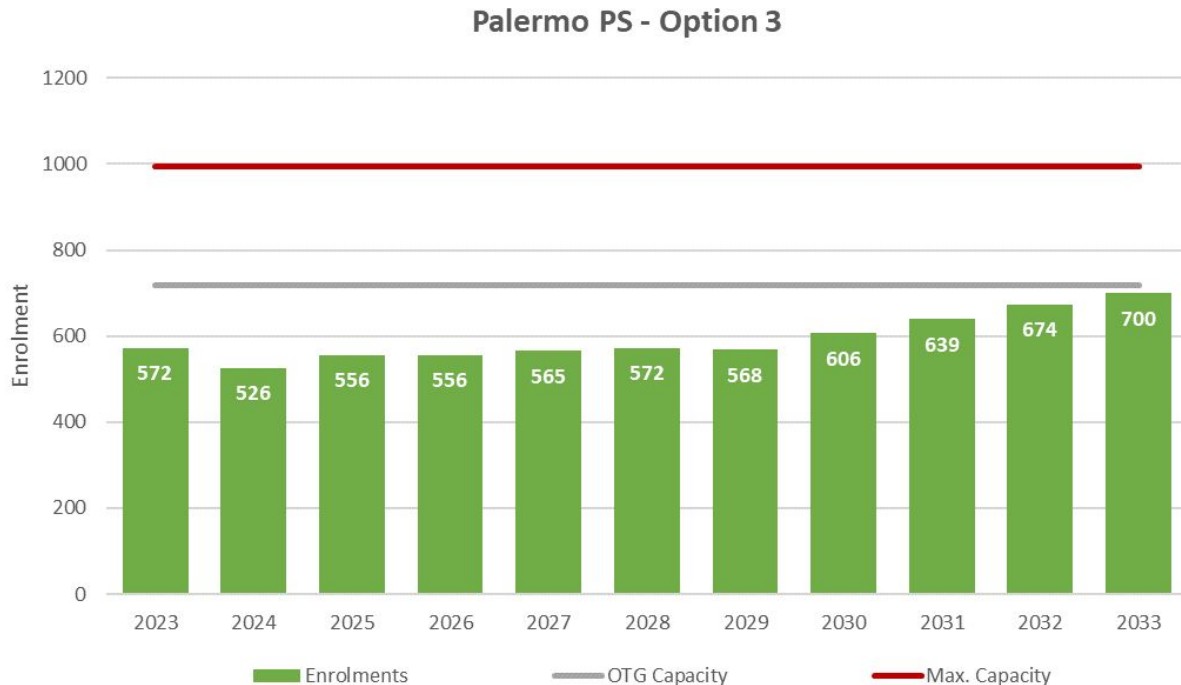


# Option 3 - Projections

LINK

## Palermo PS summary:

- School contains K-8 ENG, 2-8 FI and SPED programs
- Building Capacity: 718
- Maximum Capacity: 994
- Portables not required



MAX PORTABLES: 12

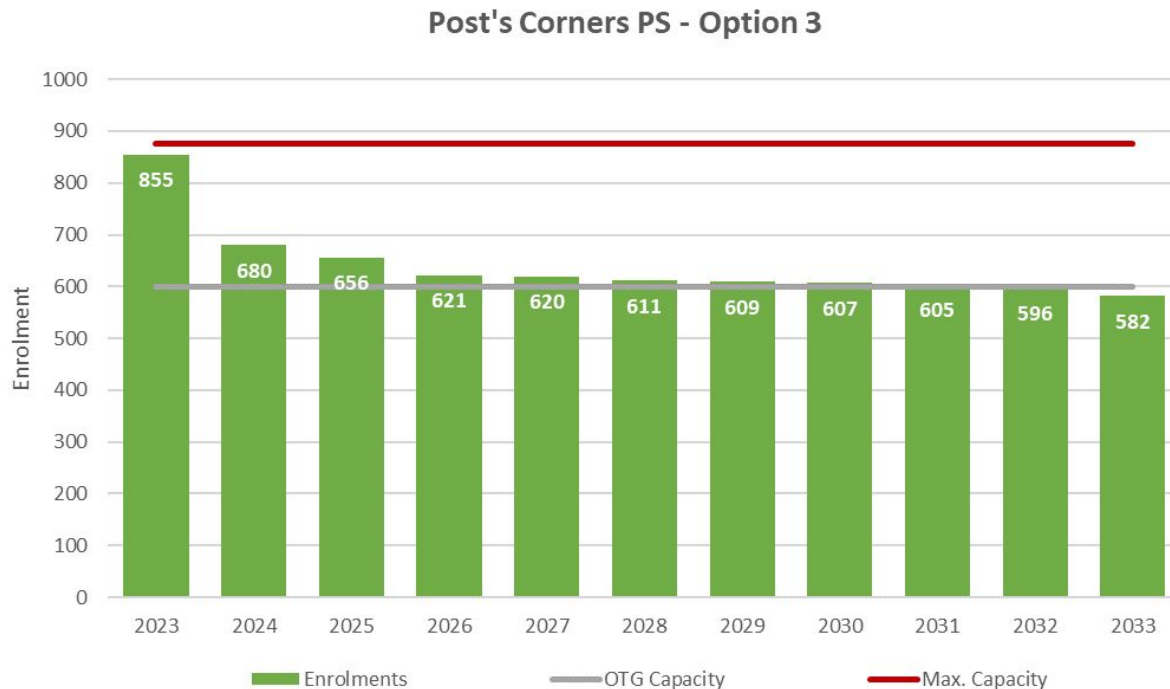
0	0	0	0	0	0	0	0	0	0	0
---	---	---	---	---	---	---	---	---	---	---

# Option 3 - Projections

[LINK](#)

## Post's Corners PS summary:

- School contains K-8 ENG and SPED programs
- Building Capacity: 600
- Maximum Capacity: 876
- Portables required until 2027



MAX PORTABLES: 12

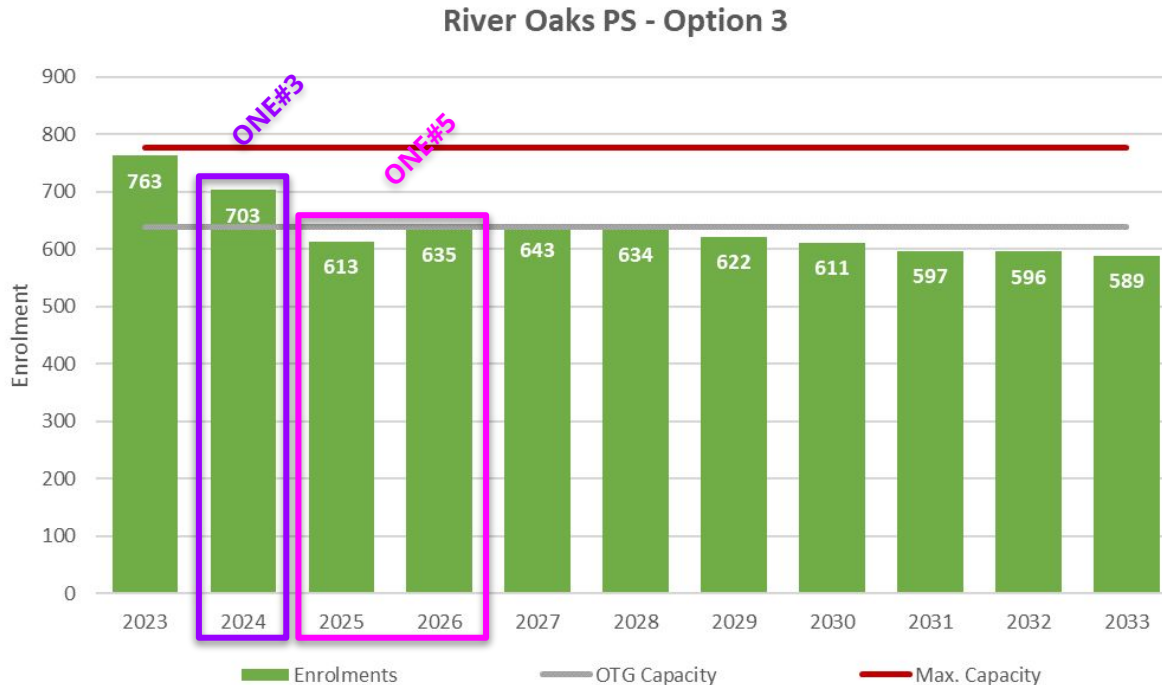
12	3	2	1	1	0	0	0	0	0	0
----	---	---	---	---	---	---	---	---	---	---

# Option 3 - Projections

[LINK](#)

## River Oaks PS summary:

- School contains K-8 ENG program
- Building Capacity: 639
- Maximum Capacity: 777
- Portables not required after 2024
- No longer an ENG holding school for areas north of Dundas St



**MAX PORTABLES: 6**

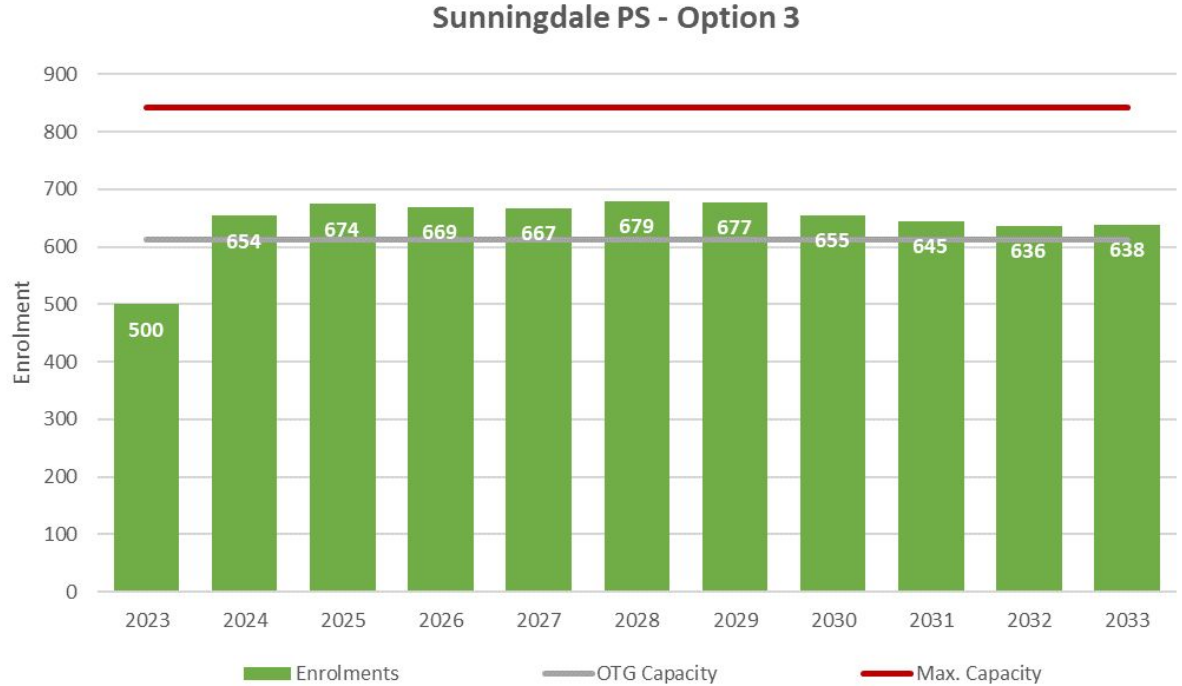
6	3	0	0	0	0	0	0	0	0	0
---	---	---	---	---	---	---	---	---	---	---

# Option 3 - Projections

[LINK](#)

## Sunningdale PS summary:

- School contains 2-8 FI program
- Building Capacity: 613
- Maximum Capacity: 843
- Portables required over the next 10 years



MAX PORTABLES: 10

0	2	3	2	2	3	3	2	1	1	1
---	---	---	---	---	---	---	---	---	---	---

# Option 4

(NO FI IN THE NORTH)

# Option 4 - Projections

[LINK](#)

## Oakville NE #3 PS summary:

- School opens Sept 2024; contains K-8 ENG and SPED programs
- Building Capacity: 788
- Maximum Capacity: 1202
- Portables required by 2027

Oakville NE #3 PS - Option 4



MAX PORTABLES: 18

-	0	0	0	5	9	12	13	14	15	16
---	---	---	---	---	---	----	----	----	----	----

# Option 4 - Projections

[LINK](#)

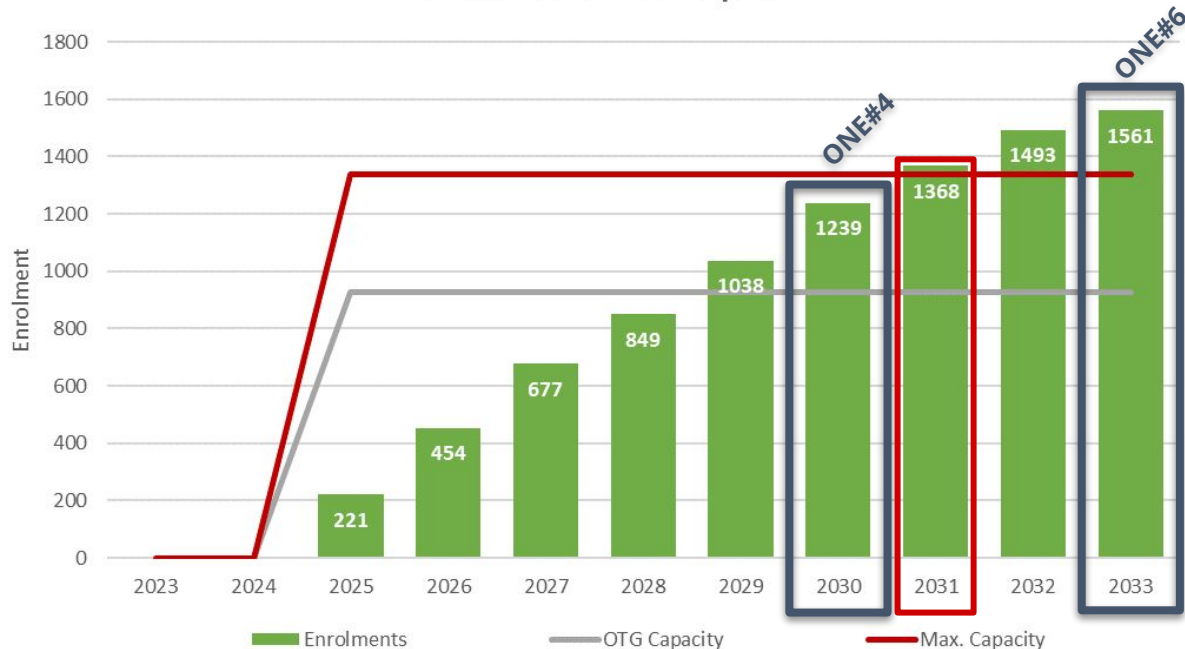
## Oakville NE #5 PS summary:

- School opens Sept 2025; contains K-8 ENG and SPED programs
- Building Capacity: 926\*
- Maximum Capacity: 1340\*
- Portables required by 2030; reaches Max Capacity by 2031

\*Currently approved for 788 building capacity. Assumes Ministry funding is approved for increased building capacity

**MAX PORTABLES: 18**

Oakville NE #5 PS - Option 4



-	-	0	0	0	0	5	14	19	25	28
---	---	---	---	---	---	---	----	----	----	----

# Option 4 - Projections

[LINK](#)

## Dr. David R. Williams PS summary:

- School contains K-8 ENG program; FI students directed to Sunningdale PS
- Building Capacity: 792
- Maximum Capacity: 1206
- Portables required over the next 10 years

Dr. David R. Williams PS - Option 4



MAX PORTABLES: 18

24	7	0	0	1	2	3	4	4	4	4
----	---	---	---	---	---	---	---	---	---	---



# Option 4 - Projections

[LINK](#)

## Falgarwood PS summary:

- School contains K-8 ENG and SPED programs
- Building Capacity: 545
- Maximum Capacity: 729
- Portables required by 2030; reached Max Capacity by 2031
- Continues to be an ENG holding school for areas north of Dundas St

Falgarwood PS - Option 4



MAX PORTABLES: 8

1	0	0	0	0	0	0	3	10	14	18
---	---	---	---	---	---	---	---	----	----	----

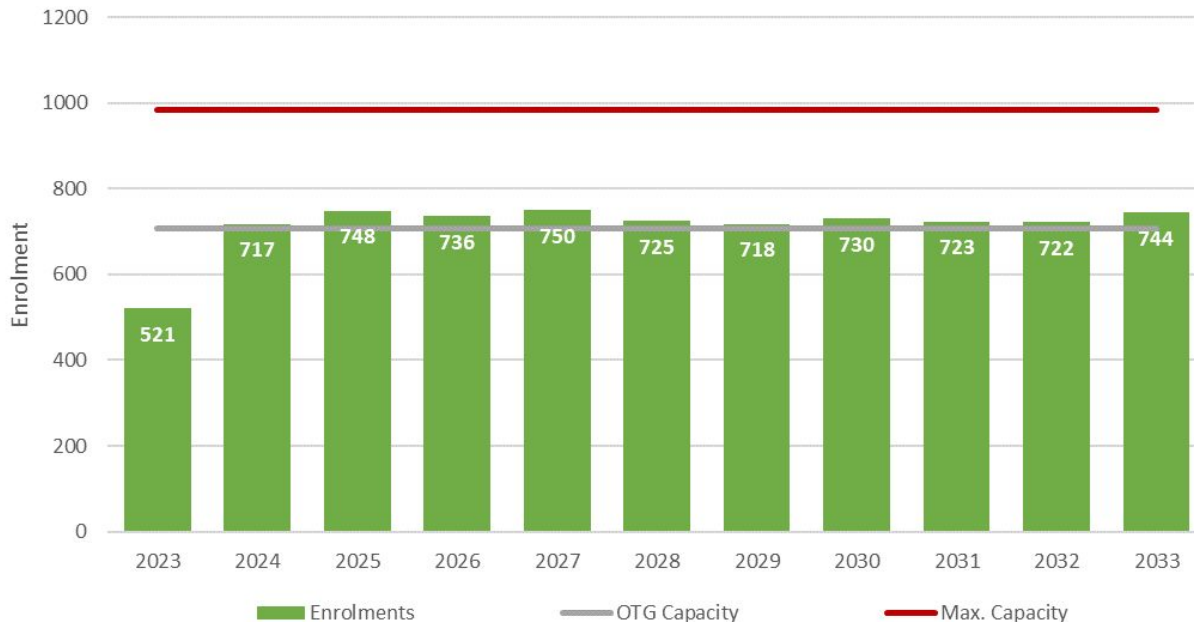
# Option 4 - Projections

[LINK](#)

## Forest Trail PS summary:

- School contains 2-8 FI program
- Portables required over the next 10 years
- Building Capacity: 708
- Maximum Capacity: 984

Forest Trail PS - Option 4



MAX PORTABLES: 12

0	0	2	1	2	1	0	1	1	1	2
---	---	---	---	---	---	---	---	---	---	---

# Option 4 - Projections

[LINK](#)

## Munn's PS summary:

- School contains 2-8 FI program
- Building Capacity: 492
- Maximum Capacity: 768
- Portables required by 2028
- Continues to be a FI holding school for areas north of Dundas St

Munn's PS - Option 4



MAX PORTABLES: 12

0	0	0	0	0	0	1	1	1	2	2
---	---	---	---	---	---	---	---	---	---	---

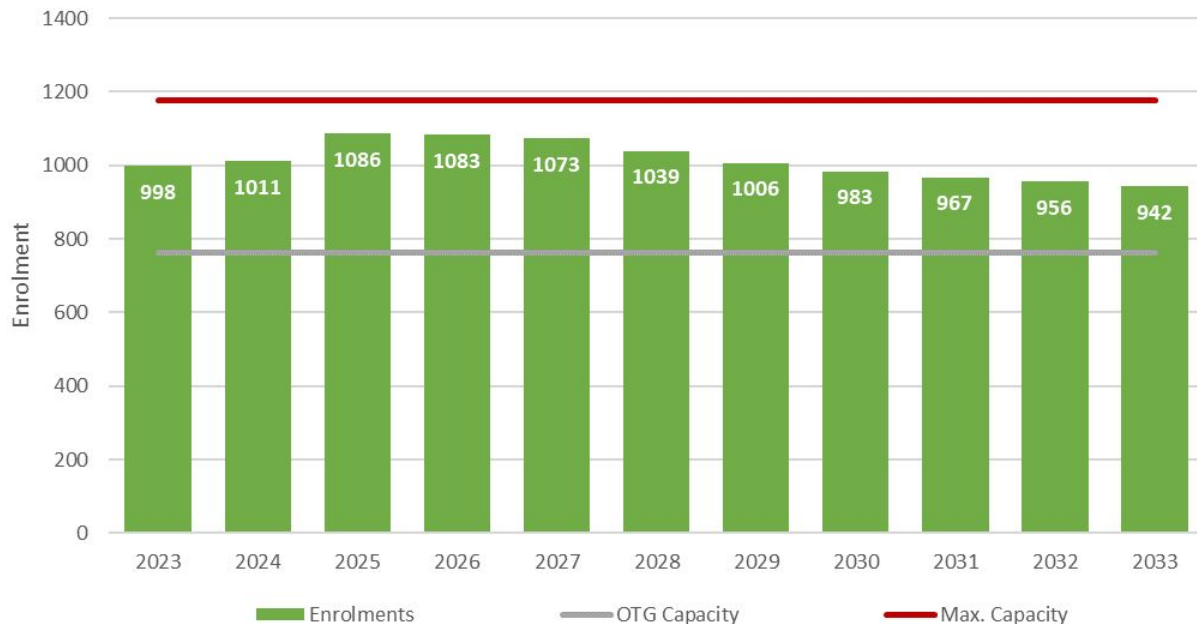
# Option 4 - Projections

[LINK](#)

## Oodenawi PS summary:

- School contains K-8 ENG and SPED programs
- Building Capacity: 762
- Maximum Capacity: 1176
- Portables required over the next 10 years

Oodenawi PS - Option 4



**MAX PORTABLES: 18**

12	11	14	14	14	12	11	10	9	8	8
----	----	----	----	----	----	----	----	---	---	---

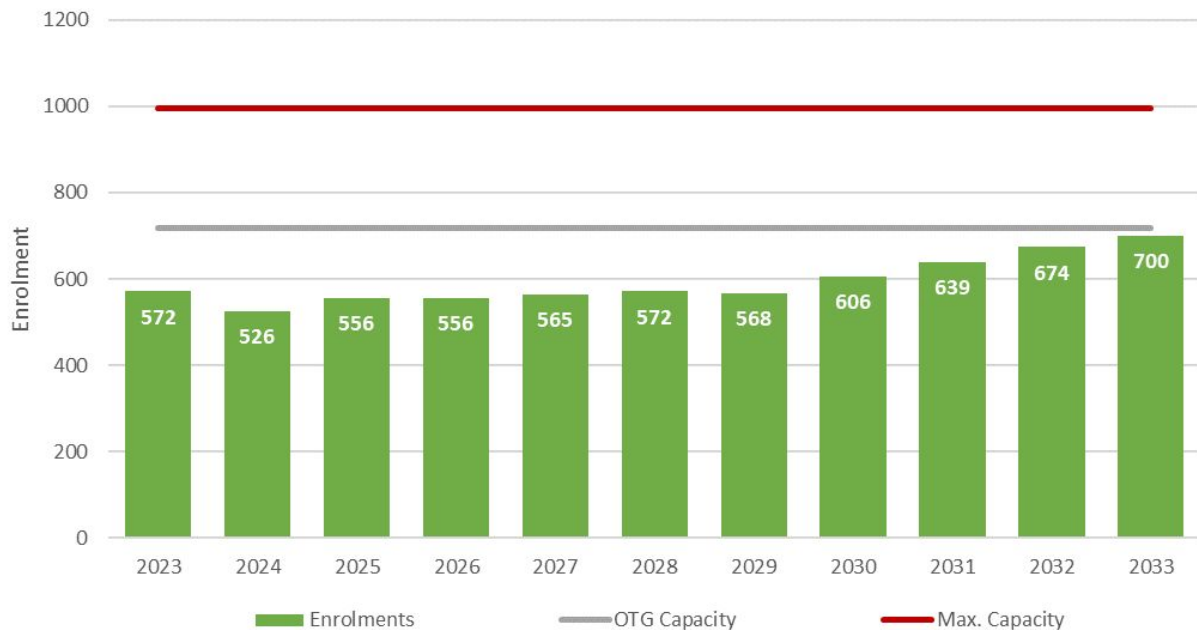
# Option 4 - Projections

LINK

## Palermo PS summary:

- School contains K-8 ENG, 2-8 FI and SPED programs
- Building Capacity: 718
- Maximum Capacity: 994
- Portables not required

Palermo PS - Option 4



MAX PORTABLES: 12

0	0	0	0	0	0	0	0	0	0	0
---	---	---	---	---	---	---	---	---	---	---

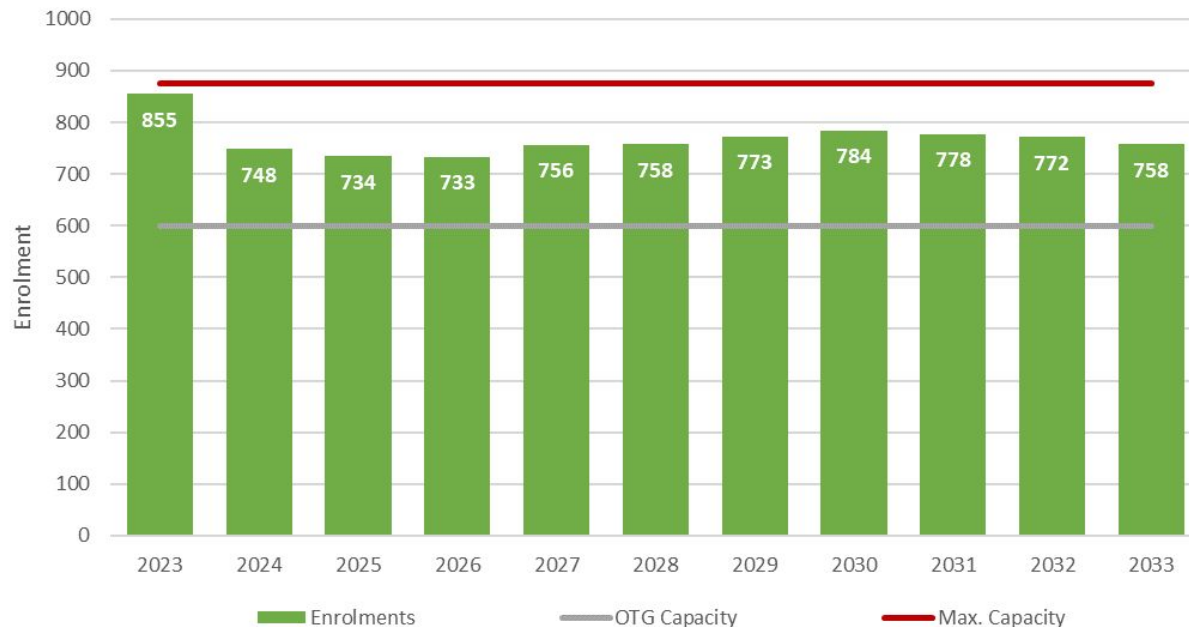
# Option 4 - Projections

[LINK](#)

## Post's Corners PS summary:

- School contains K-8 ENG and SPED programs
- Building Capacity: 600
- Maximum Capacity: 876
- Portables required over the next 10 years

Post's Corners PS - Option 4



**MAX PORTABLES: 12**

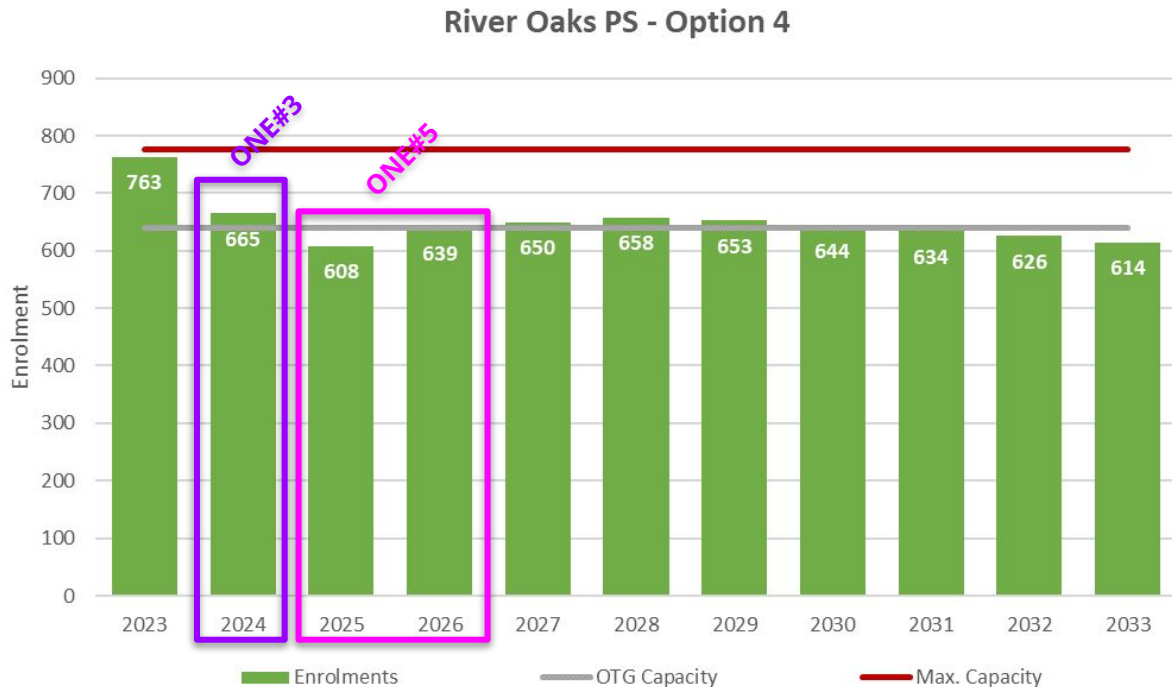
12	6	6	6	7	7	8	8	8	7	7
----	---	---	---	---	---	---	---	---	---	---

# Option 4 - Projections

[LINK](#)

## River Oaks PS summary:

- School contains K-8 ENG program
- Building Capacity: 639
- Maximum Capacity: 777
- Portables not required after 2024 except from 2028 to 2029
- Continues to be an ENG holding school for areas north of Dundas St



**MAX PORTABLES: 6**

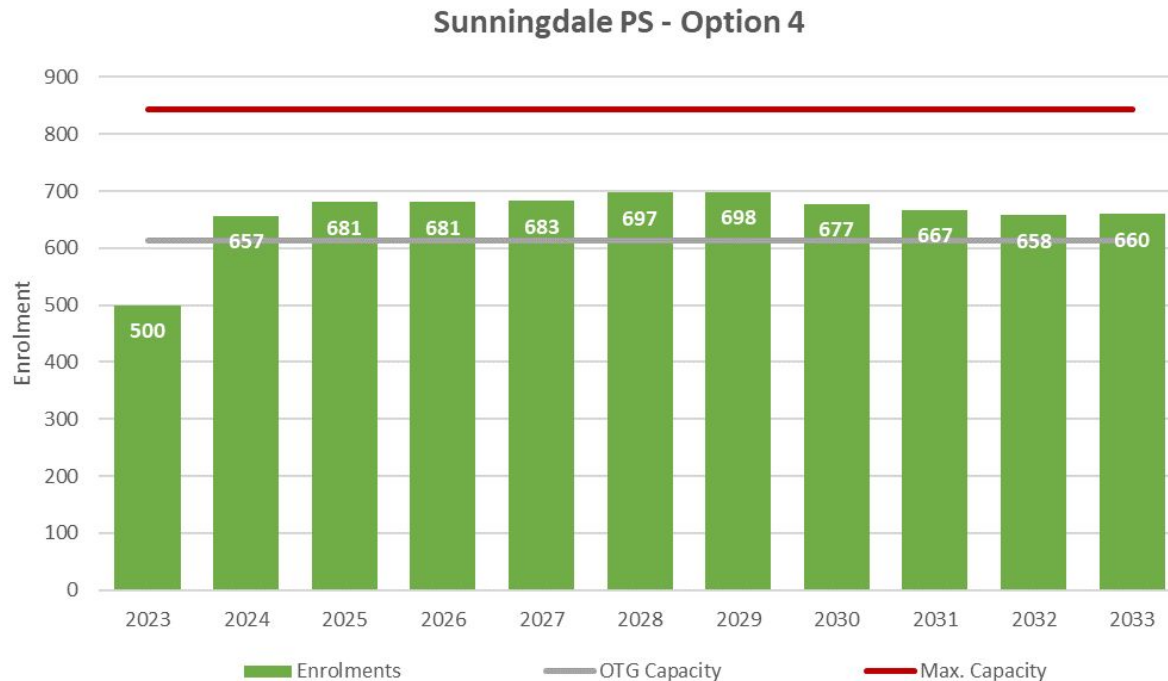
6	1	0	0	0	1	1	0	0	0	0
---	---	---	---	---	---	---	---	---	---	---

# Option 4 - Projections

[LINK](#)

## Sunningdale PS summary:

- School contains 2-8 FI program
- Building Capacity: 613
- Maximum Capacity: 843
- Portables required over the next 10 years



**MAX PORTABLES: 10**

0	2	3	3	3	4	4	3	2	2	2
---	---	---	---	---	---	---	---	---	---	---