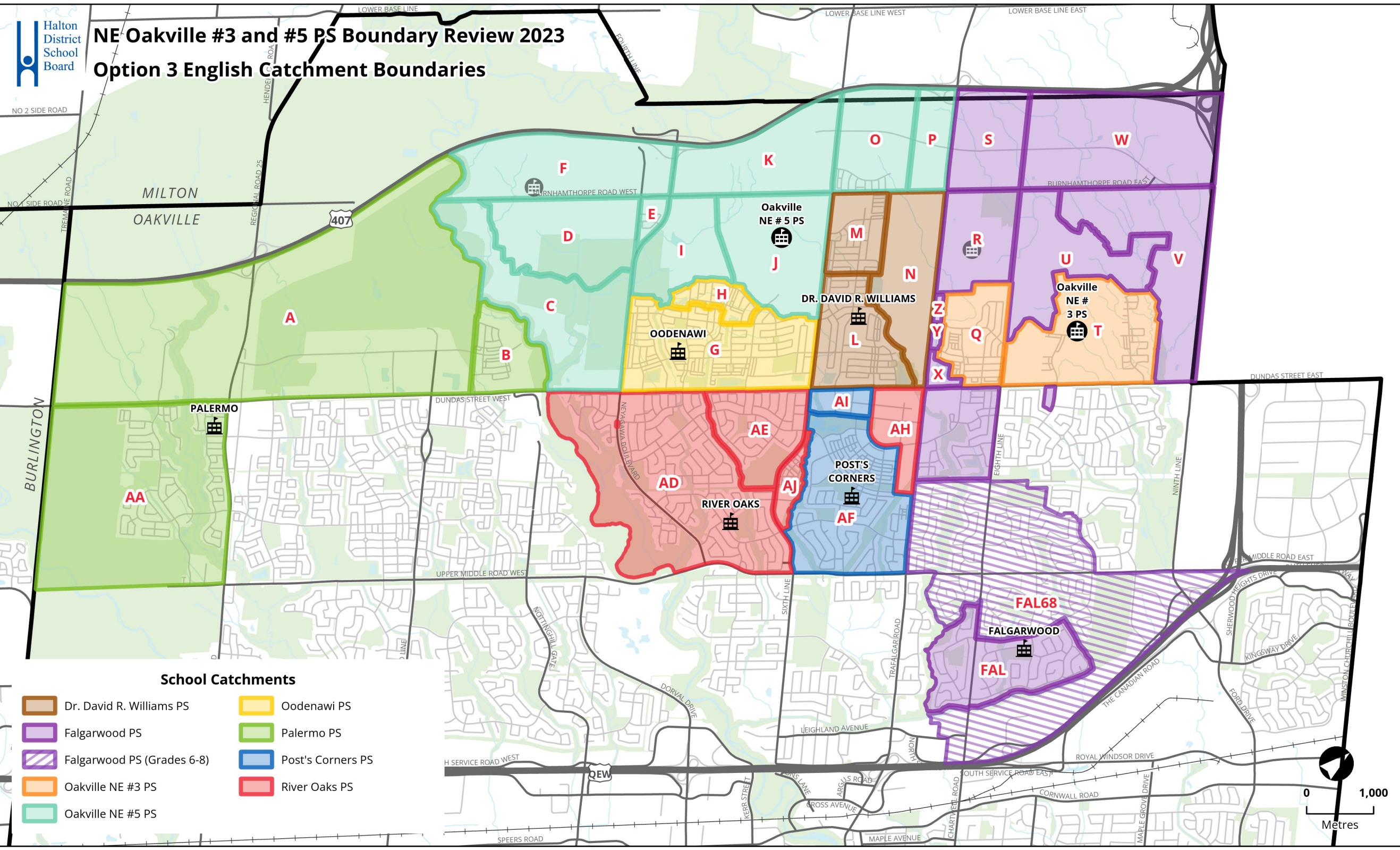




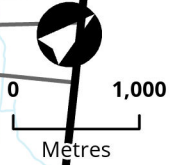
# NE Oakville #3 and #5 PS Boundary Review 2023

## Option 3 English Catchment Boundaries



### School Catchments

- Dr. David R. Williams PS
- Oodenawi PS
- Falgarwood PS
- Palermo PS
- Falgarwood PS (Grades 6-8)
- Post's Corners PS
- Oakville NE #3 PS
- River Oaks PS
- Oakville NE #5 PS

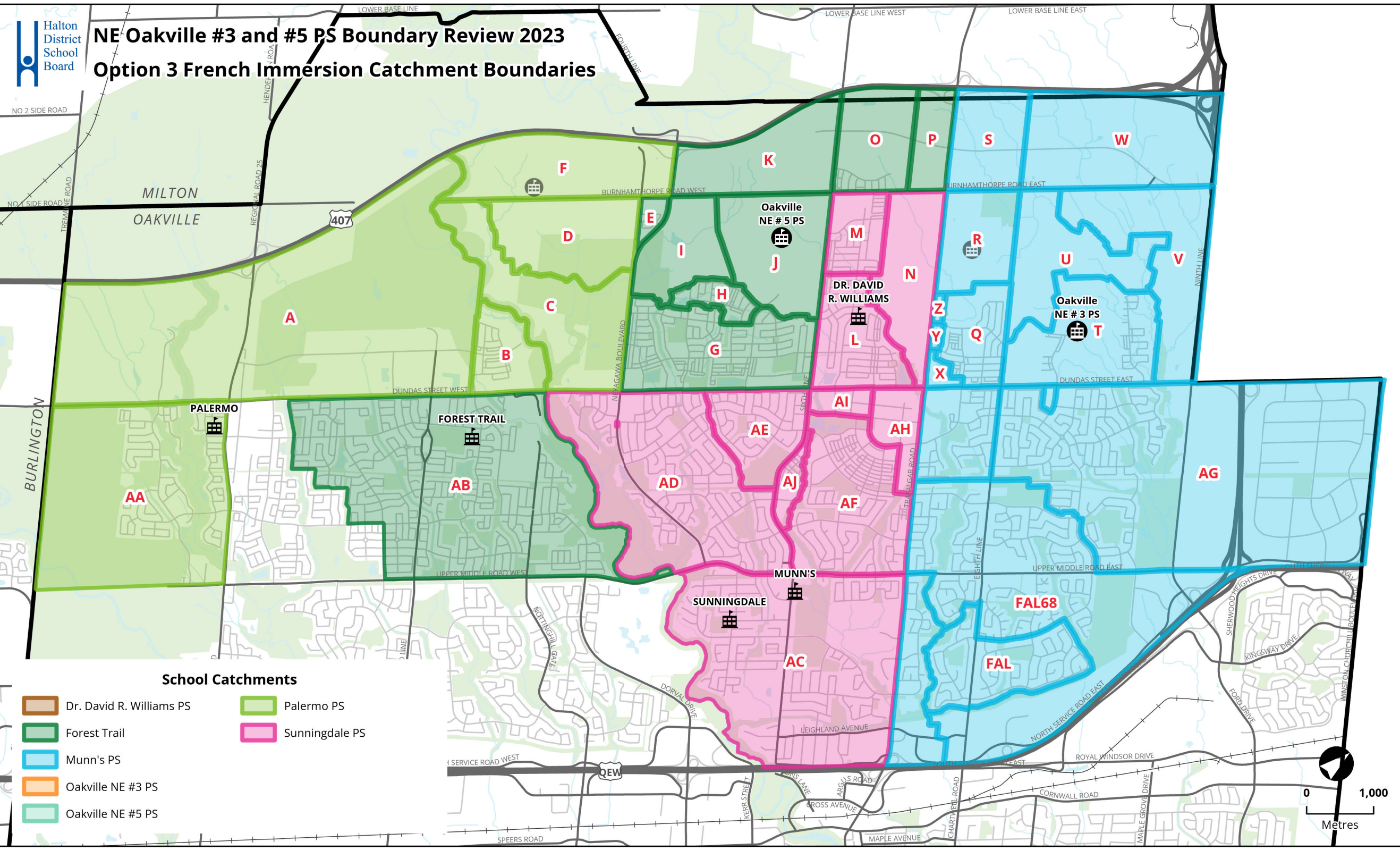






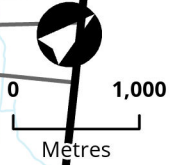
# NE Oakville #3 and #5 PS Boundary Review 2023

## Option 3 French Immersion Catchment Boundaries



### School Catchments

- Dr. David R. Williams PS
- Forest Trail
- Munn's PS
- Oakville NE #3 PS
- Oakville NE #5 PS
- Palermo PS
- Sunningdale PS







Option 3

Updated: Sept 28, 2023

[What you need to know about this option implementation](#)

School	Building Capacity	Portable	Total Capacity	Program	enrolment										Notes		
					2023	2024	2025	2026	2027	2028	2029	2030	2031	2032		2033	
Post's Corners PS	600	Maximum : 12 Port: Cap: 276	876	ENG	845	877	646	611	610	601	599	597	595	586	572	School located south of Dundas St. JK-8 English, SPED programs. Impacted by development. Students redirected to Palermo PS have been placed back (2024).	
				FI	0	0	0	0	0	0	0	0	0	0	0		
				SC-SPED	10	10	10	10	10	10	10	10	10	10	10		10
				<b>Total</b>	<b>855</b>	<b>887</b>	<b>656</b>	<b>621</b>	<b>620</b>	<b>611</b>	<b>609</b>	<b>607</b>	<b>605</b>	<b>596</b>	<b>582</b>		
				<i>Percent Utilization</i>	143%	148%	109%	103%	103%	102%	102%	101%	101%	99%	97%		
<i>Available (+) / Shortage (-) of Pupil Places</i>					-255	-287	-56	-21	-20	-11	-9	-7	-5	4	18		
<i>Estimate number of portables</i>					12	12	2	1	1	0	0	0	0	0	0		
River Oaks PS	639	Maximum : 6 Port: Cap: 138	777	ENG	763	495	613	635	643	634	622	611	597	596	589	School located south of Dundas St. JK-8 English. Not a holding school for north of Dundas St. No impact from development.	
				FI	0	0	0	0	0	0	0	0	0	0	0		
				SC-SPED	0	0	0	0	0	0	0	0	0	0	0		
				<b>Total</b>	<b>763</b>	<b>495</b>	<b>613</b>	<b>635</b>	<b>643</b>	<b>634</b>	<b>622</b>	<b>611</b>	<b>597</b>	<b>596</b>	<b>589</b>		
				<i>Percent Utilization</i>	119%	78%	96%	99%	101%	99%	97%	96%	93%	93%	92%		
<i>Available (+) / Shortage (-) of Pupil Places</i>					-124	144	27	4	-4	5	18	28	42	43	50		
<i>Estimate number of portables</i>					6	0	0	0	0	0	0	0	0	0	0		
Sunningdale PS	613	Maximum : 10 Port: Cap: 230	843	ENG	0	0	0	0	0	0	0	0	0	0	0	School located south of Dundas St. 2-8 FI. FI school for Dr DRW PS. Impact from development.	
				FI	500	654	674	669	667	679	677	655	645	636	638		
				SC-SPED	0	0	0	0	0	0	0	0	0	0	0		
				<b>Total</b>	<b>500</b>	<b>654</b>	<b>674</b>	<b>669</b>	<b>667</b>	<b>679</b>	<b>677</b>	<b>655</b>	<b>645</b>	<b>636</b>	<b>638</b>		
				<i>Percent Utilization</i>	82%	107%	110%	109%	109%	111%	110%	107%	105%	104%	104%		
<i>Available (+) / Shortage (-) of Pupil Places</i>					113	-41	-61	-56	-54	-66	-64	-42	-32	-23	-25		
<i>Estimate number of portables</i>					0	2	3	2	2	3	3	2	1	1	1		
<b>Total Enrolment</b>					6310	6558	6878	7244	7714	8083	8400	8776	9062	9319	9538		
<b>Total Portables</b>					55	32	22	20	27	36	44	58	70	79	89		

What you need to know about the option

Enrolments are based on September 11, 2023 actual. SPS Scenario 1420 (high yields); projections will be updated with Oct 2023 actuals

Projections assumes redirected students (K-7) return to Post's Corners PS and Dr. David R. Williams PS from Palermo PS for 2024/25; assumes current Gr7 remains at Palermo PS

All development timing are a best estimates. Development phasing have been updated as of July 2023

Number of Portables (2023) are actual numbers of portables required based on preliminary classroom usage and organization

Number of portables (2024+) are estimates based on Shortage of Pupil Place / 23 pupils

Oakville NE #4 ps opens 2030/31 (subject to change)

Oakville NE #6 ps opens 2033+ (subject to change)

Implementation

Oakville NE #3 PS opens 2024/25 as K-7 ENG school, Gr8 ENG added 2025/26

Oakville NE #5 PS opens 2025/26 as K-7 ENG school, Gr8 ENG added 2026/27

Dr. David R. Williams PS FI program is Gr8 in 2024/25