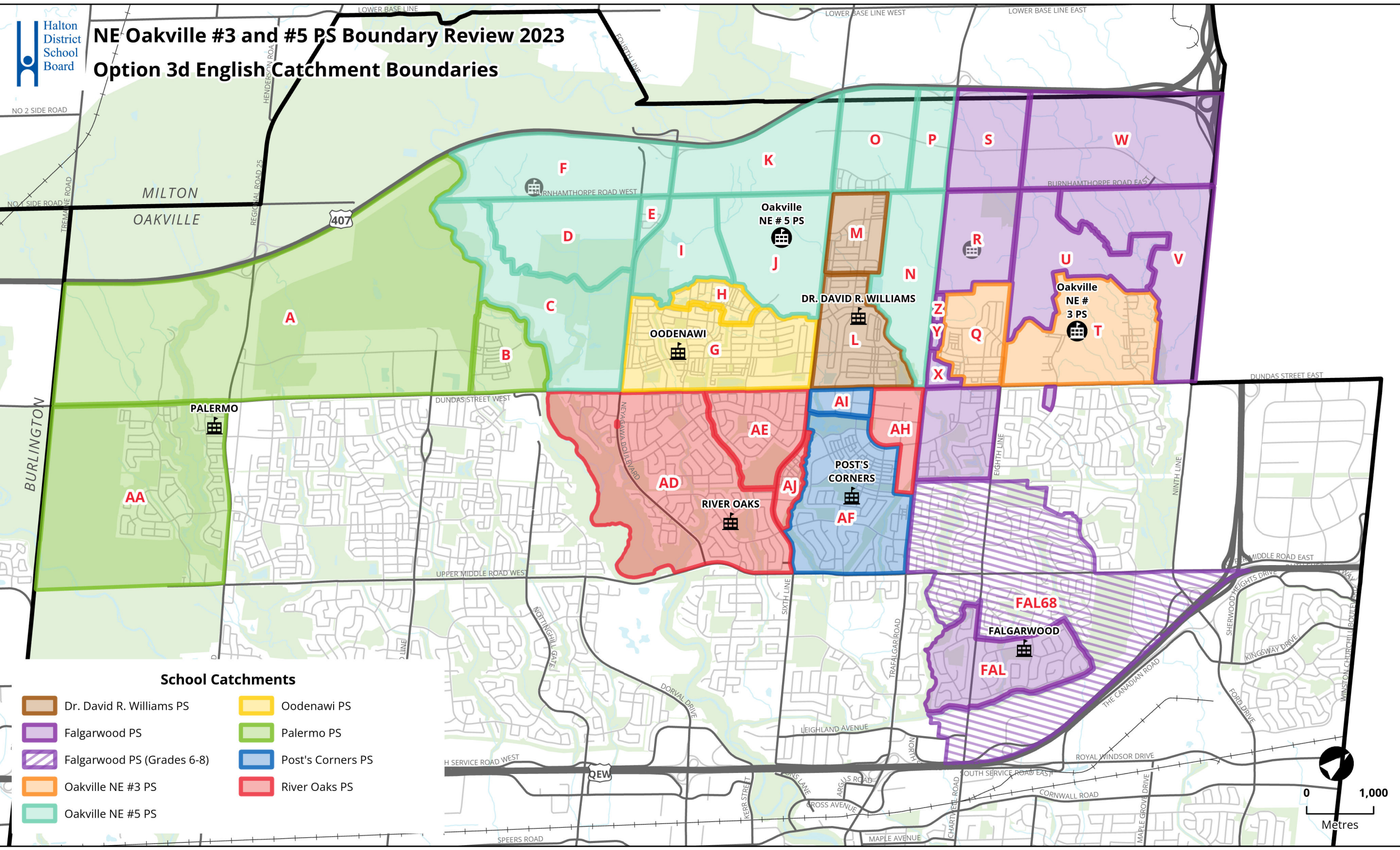




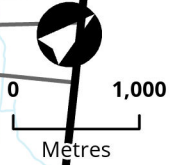
NE Oakville #3 and #5 PS Boundary Review 2023

Option 3d English Catchment Boundaries



School Catchments

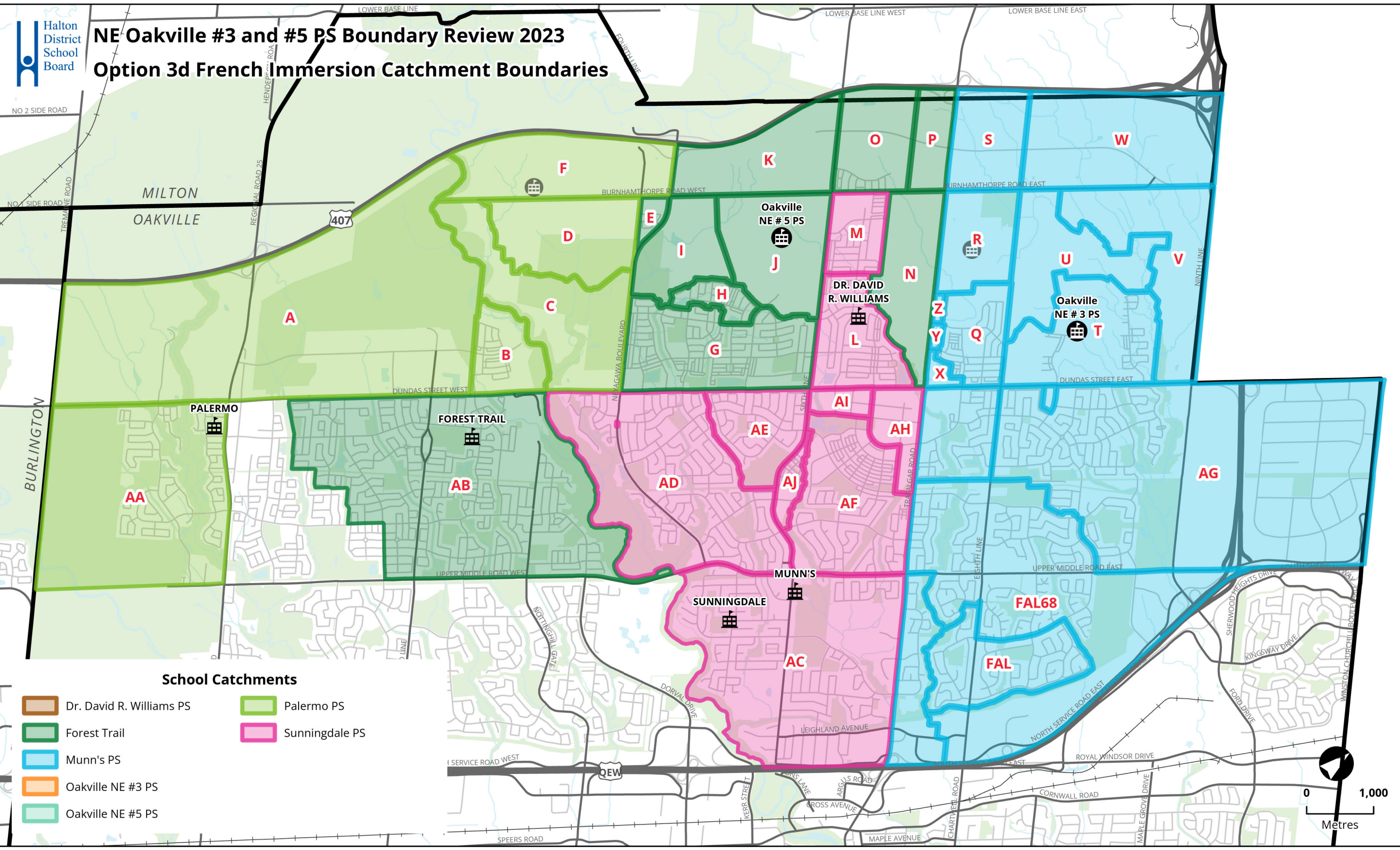
- Dr. David R. Williams PS
- Falgarwood PS
- Falgarwood PS (Grades 6-8)
- Oakville NE #3 PS
- Oakville NE #5 PS
- Oodenawi PS
- Palermo PS
- Post's Corners PS
- River Oaks PS





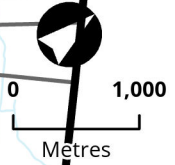
NE Oakville #3 and #5 PS Boundary Review 2023

Option 3d French Immersion Catchment Boundaries



School Catchments

- Dr. David R. Williams PS
- Forest Trail
- Munn's PS
- Oakville NE #3 PS
- Palermo PS
- Sunningdale PS
- Oakville NE #5 PS



Option 3d

Created: Oct 31, 2023

[What you need to know about this option](#)

[Implementation](#)

School	Building Capacity	Portable	Total Capacity	Program	2023	ONE3 opens	ONE5 opens	2026	2027	2028	2029	estimate	estimate	2033	Notes		
						2024	2025					ONE4 opens	ONE6 opens				
Post's Corners PS	600	Maximum : 12	876	ENG	845	670	646	611	610	601	599	597	595	586	572	School located south of Dundas St. JK-8 English, SPED programs. Impacted by development. Students redirected to Palermo PS have been placed back (2024).	
		Port: Cap: 276		FI	0	0	0	0	0	0	0	0	0	0	0		
		SC-SPED		10	10	10	10	10	10	10	10	10	10	10	10		
		Total		855	680	656	621	620	611	609	607	605	596	582			
	<i>Percent Utilization</i>					143%	113%	109%	103%	103%	102%	102%	101%	101%	99%		97%
	<i>Available (+) / Shortage (-) of Pupil Places</i>					-255	-80	-56	-21	-20	-11	-9	-7	-5	4		18
<i>Estimate number of portables</i>					12	3	2	1	1	0	0	0	0	0	0		
River Oaks PS	639	Maximum : 6	777	ENG	763	703	613	635	643	634	622	611	597	596	589	School located south of Dundas St. JK-8 English. Not a holding school for north of Dundas St. No impact from development.	
		Port: Cap: 138		FI	0	0	0	0	0	0	0	0	0	0	0		
		SC-SPED		0	0	0	0	0	0	0	0	0	0	0	0		
		Total		763	703	613	635	643	634	622	611	597	596	589			
	<i>Percent Utilization</i>					119%	110%	96%	99%	101%	99%	97%	96%	93%	93%		92%
	<i>Available (+) / Shortage (-) of Pupil Places</i>					-124	-64	27	4	-4	5	18	28	42	43		50
<i>Estimate number of portables</i>					6	3	0	0	0	0	0	0	0	0	0		
Sunningdale PS	613	Maximum : 10	843	ENG	0	0	0	0	0	0	0	0	0	0	0	School located south of Dundas St. 2-8 FI. FI school for Dr DRW PS. Impact from development.	
		Port: Cap: 230		FI	500	654	672	664	660	669	662	637	626	615	616		
		SC-SPED		0	0	0	0	0	0	0	0	0	0	0	0		
		Total		500	654	672	664	660	669	662	637	626	615	616			
	<i>Percent Utilization</i>					82%	107%	110%	108%	108%	109%	108%	104%	102%	100%		101%
	<i>Available (+) / Shortage (-) of Pupil Places</i>					113	-41	-59	-51	-47	-56	-49	-24	-13	-2		-3
<i>Estimate number of portables</i>					0	2	3	2	2	2	2	1	1	0	0		
Total Enrolment					6310	6558	6878	7244	7714	8083	8400	8776	9062	9319	9538		
Total Portables					55	26	21	19	25	32	43	58	70	79	89		

[What you need to know about the option](#)

Enrolments are based on September 11, 2023 actual. SPS Scenario 1420 (high yields); projections will be updated with Oct 2023 actuals

Projections assumes redirected students (K-7) return to Post's Corners PS and Dr. David R. Williams PS from Palermo PS for 2024/25; assumes current Gr7 remains at Palermo PS

All development timing are a best estimates. Development phasing have been updated as of July 2023

Number of Portables (2023) are actual numbers of portables required based on preliminary classroom usage and organization

Number of portables (2024+) are estimates based on Shortage of Pupil Place / 23 pupils

Oakville NE #4 ps opens 2030/31 (subject to change)

Oakville NE #6 ps opens 2033+ (subject to change)

*In 2023, Dr. David R. Williams PS has a maximum capacity of 1344 (24 portables). From 2024 and beyond, this school will have a maximum capacity of 1206 (18 portables)

[Implementation](#)

Oakville NE #3 PS opens 2024/25 as K-7 ENG school, Gr8 ENG added 2025/26

Oakville NE #5 PS opens 2025/26 as K-7 ENG school, Gr8 ENG added 2026/27

Dr. David R. Williams PS FI program is Gr8 in 2024/25