

Board Report Number: 23024

February 9, 2023
For Decision

To: Members of the Halton District School Board
From: S. Podrebarac, Superintendent of Education
J. Fowler, Superintendent of Education
F. Thibeault, General Manager, Planning
C. Ennis, Director of Education
Re: **Georgetown South Boundary Review**

RECOMMENDATION:

BE IT RESOLVED THAT the Halton District School Board adjust the boundaries for Ethel Gardiner PS and Silver Creek PS English program as outlined in Option 5, as detailed in Report 23024, effective September 2023.

THAT the Halton District School Board permits students currently attending Grade 7 as of March 1, 2023, at Ethel Gardiner that is impacted by the boundary changes to be granted a legacy exemption to finish their Grade 8 year (2023-24) at Ethel Gardiner PS, with transportation; and,

THAT the Halton District School Board allow new students moving into Zone E1 following March 1, 2023, be given the opportunity to enrol at Silver Creek PS immediately.

Background

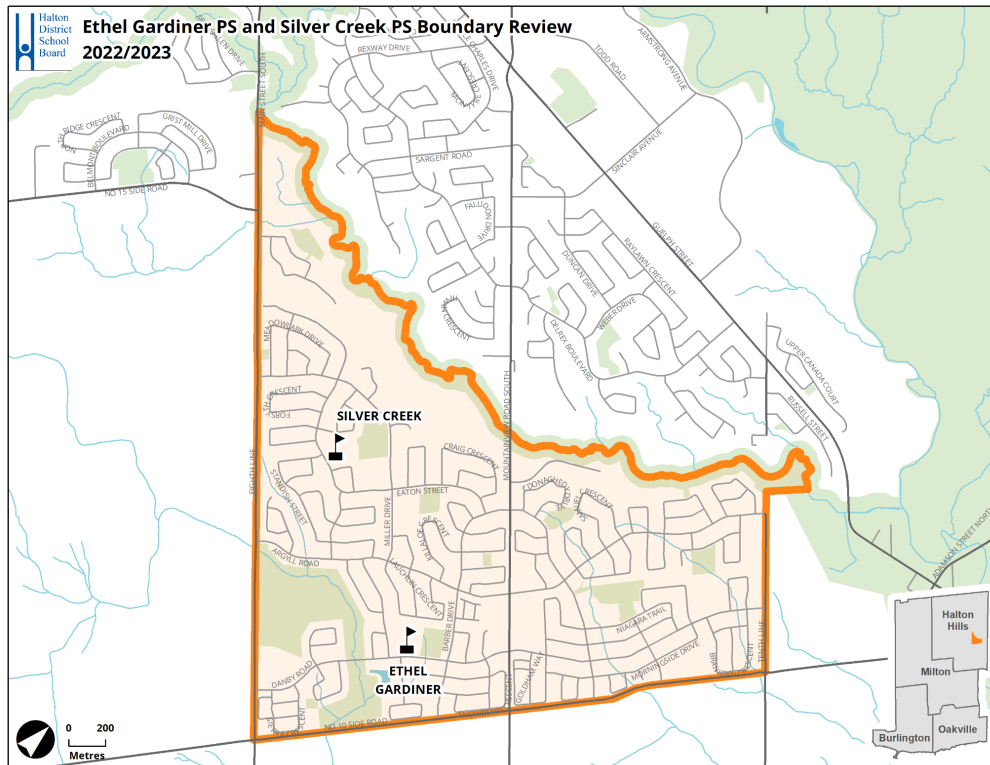
At the December 7, 2022 Board meeting the Board of Trustees approved the following Recommendation as per [Board Report 22148](#):

“BE IT RESOLVED THAT, the Halton District School Board direct staff to complete a boundary review for ERA 124 (Georgetown South) with the objective of addressing accommodation pressures.”

There have been increased pressures at Ethel Gardiner PS in the Town of Halton Hills, generated by both new development, and program offerings at the school. In response, the Board approved the commencement of this boundary review to redistribute enrolment pressures from Ethel Gardiner PS to other facilities within ERA 124, namely Silver Creek PS. Figure 2 identifies the study area for the proposed boundaries.

The purpose of this report is to present the Director’s recommended option to the Board of Trustees for consideration and approval, to be implemented for September 2023.

Figure 1: South Georgetown Boundary Review Study Area map



Discussion:

A Boundary Review Steering Committee (BRSC) was established to lead the school boundary review process, including assigned Family of School Superintendents & Trustees, affected Trustees, Facilities and Planning Staff, and a representative from Halton Student Transportation Services. For a full list of members, please refer to Appendix A.

The BRSC initially met on December 20, 2022, and continued to meet until January 30, 2023, meeting on a total of five (5) occasions (including the public information meeting). At the inaugural meeting, the BRSC was first tasked with confirming which schools were to be involved in the process to address the enrolment pressures at Ethel Gardiners, and to confirm which pathway was to be employed as per the Board's [Administrative Procedure: School Boundary Reviews](#).

The BRSC also reviewed school enrolments, capacities, and programs for schools in the South Georgetown Elementary Review Area 124 as identified in the [2021/2022 Long Term Accommodation Plan \(LTAP\)](#). It was concluded that given the underutilization at Silver Creek PS, and it being the only other facility in Georgetown that has a JK-8 grade model, the BRSC concluded that the only two schools required to reach a desirable outcome for the Boundary review were

Board Report Number: 23024

February 9, 2023

For Decision

Ethel Gardiner PS and Silver Creek PS.

As per the [HDSB Boundary Review Administrative Procedure](#), the BRSC then concluded that Consultation Process Pathway #1 was most appropriate for this Boundary review, for the following reasons:

1. There were a sizeable number of options available for review;
2. A moderate number of students would be potentially impacted, and require relocation; and,
3. Certain options would have the effect of displacing well established communities in the area.

The Boundary Review Committee (BRC) had three (3) meetings in the time period between January 10, 2023, and January 30, 2023. Board staff from the Planning Department, Superintendents, and Trustees worked with the BRC parent/guardian representatives to provide them with information on each school affected by the boundary review. Some of the data that was examined by the BRC included:

1. Enrolment data, school capacity including building on the ground (OTG), Functional Building Capacity (FBC), and maximum capacity (with portables), building utilization, and estimated number of portables required in the next ten years
2. Information on school programs, viable programs, transportation costs, walking distances
3. Viability of program (student enrolment to sustain programs in an educationally sound and fiscally responsible way)
4. A ten-year enrolment projection for each scenario proposed including proposed transitions by year and discussion points
5. Program boundary maps for the English program of the current scenario, as well of each option that was developed as part of the process
6. A zone map was provided for ease of reference for the BRC and BRSC

The BRC initially reviewed four (4) options as developed by the Boundary Review Steering Committee. During the course of the process, one (1) additional scenario was generated and assessed as per the established criteria. A total of five (5) options were considered by the BRC.

The BRC used the criteria to reduce the number of viable scenarios. Throughout this process, BRC school representative members consulted with their School Councils, school communities, school administrators, and Board staff to determine which criteria were held in the highest regard. The BRC shared this information and utilized this data to determine the criteria that were deemed to be the most important in measuring the impact and effectiveness of boundary scenarios:

At the BRC Meeting #2 meeting held on January 16, 2023, the BRC used the criteria to evaluate each scenario under consideration, and decided upon two (2) shortlisted options that best met these standards to present at the scheduled Public Information Meeting. These included Option 2 ([link](#)) and Option 5 ([link](#)).

On January 24, 2023, the virtual Public Information Meeting was live-streamed ([link](#)). The

Board Report Number: 23024

February 9, 2023
For Decision

invitation was sent on January 17, 2023 to all impacted school communities including instructions on how to access the live-stream and participate by posting questions and comments on the live Google Form during the virtual meeting. Both the question forum and the Public Information Meeting presentation were made available to the public in advance of the meeting to allow time to formulate questions for the members of the BRSC. This forum provided the opportunity for public input on the preferred options in advance of the meeting.

At this meeting, Board staff and school representatives of the BRC shared information on the process, the recommended scenarios, responded to questions regarding the process, and explained the feedback process. The public was asked to provide their insights on a feedback form directly on a link provided on the Board's website. All feedback was to be submitted by January 27, 2023, using the Public Information Feedback Form.

The BRC had their final meeting on January 30, 2023 in person at Ethel Gardiner PS. The focus for this evening was to analyze the data from the Public Information Feedback responses regarding the two (2) scenarios presented at the Community Consultation Meeting, and to reach a consensus on which option(s) they wanted to suggest to the BRSC to present to the Director of Education for consideration. It was concluded that:

1. Option 5 ([link](#)) best met the intent of the review, and the needs of the community expressed through the feedback received by the Board.
2. Given the lower number of students being relocated, only current Grade 7 students presently attending Ethel Gardiner PS would be given a legacy exemption to remain at Ethel Gardiner, with Transportation until graduation.
3. And that students that move into the affected Zone E1 ([link](#)) that move into the area following March 1, 2023, be given the option to begin attending Silver Creek PS.

To this end, the BRSC carefully considered the BRC recommendations, revisited the process, and recommended to the Director that Option 5 with additional considerations met the criteria with optimal balance and viability for all the affected schools in the study. The BRSC felt that these scenarios would:

1. best meet the criteria as established and prioritized by the BRC;
2. best respond to the consultation feedback; and
3. ensure sustainable and viable schools in the study area.

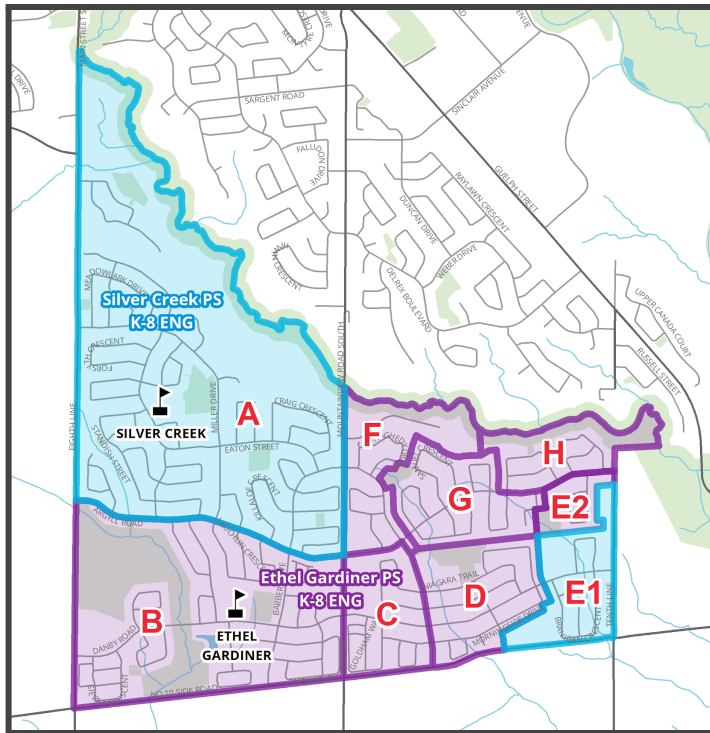
Subsequently, the Director and Administrative Council reviewed the recommendation from the BRSC, and concurred with their rationale for moving it forward to the Board for consideration and approval. The rationale for Option 5 was as follows:

1. best addresses the criteria identified during the boundary review process;
2. preferred option and consideration as identified by the BRC
3. provides a balance of overall enrolment across schools in the study areas;
4. clear identifiable boundaries that represent a neighbourhood scale, bound by major streets, and avoid dividing residential neighbourhoods where possible;
5. keep neighbourhood communities together;

6. maximizes opportunities to walk and roll to school, using active modes of transportation, and reduces the reliance on transportation services;
7. where transportation is required, distances are minimized to the best extent possible
8. considers the potential space requirements at Silver Creek PS to best offer the special education programs offered, which are space intensive; and
9. addresses the warrant and recommendation in the Board motion.

Ultimately, the Director recommended the Halton District School Board implement the boundaries as outlined in Option 5 effective September 2023, with special considerations for new move-ins within Zone E1.

Figure 2: Option #5 Implementation Implications



The following implications have been identified for each school:

1. Zone E1 English students redirected from Ethel Gardiner PS to Silver Creek PS.
2. Ethel Gardiner PS is projected to decline to under OTG capacity.
3. Silver Creek PS projected to increase but remain under OTG capacity.
4. No change in transportation eligibility for both schools.
5. Decrease in the number of buses to Ethel Gardiner PS.
6. Increase in the number of buses to Silver Creek PS.
7. Minor increases to transportation needs, subject to future bell time review.

Alternative Options:

There were a total of four (4) alternative options that were reviewed by the Boundary Review Committee.

They are as follows:

1. Ethel Gardiner PS and Silver Creek PS Boundary Review - Current Boundaries
2. Ethel Gardiner PS and Silver Creek PS Boundary Review - Option 1
3. Ethel Gardiner PS and Silver Creek PS Boundary Review - Option 2

Board Report Number: 23024

February 9, 2023

For Decision

-
4. [Ethel Gardiner PS and Silver Creek PS Boundary Review - Option 3](#)
 5. [Ethel Gardiner PS and Silver Creek PS Boundary Review - Option 4](#)

For more information on why certain options were not selected to advance for consideration by the BRSC and/or Director of Education, please review the minutes presented on the dedicated [Boundary Review Website for South Georgetown](#).

Communication Plan:

Subsequent to the inaugural BRSC meeting, a message was sent on December 21, 2022, to each affected elementary school principals to invite the School Council Chairs and/or designates plus an additional school parent/guardian member to be a part of the Boundary Review Committee (BRC) and attend meetings.

A message was also sent through School Messenger on December 22, 2022 to the school community to advise them of the commencement of the Boundary Review process in South Georgetown, and the critical milestones leading up to final approvals.

A dedicated website was created on the Board website, and shared as part of the initial communications to the community. Throughout the process, the public was encouraged to send their inquiries about the boundary review through email SouthGeorgetownReview@hdsb.ca.

The notes from each meeting and the various versions of the scenarios developed were posted on the website within 48 hours after the BRC meeting on the dedicated [South Georgetown Boundary Review website](#).

On February 10, 2023, a communication was shared with the community advising them of the Director of Education's recommended option and implementation plan, and that the Board report will be available on the same date. Note, the BRC members were advised in advance of the community announcement.

Subject to final approval for the Board of Trustees, if approved, staff will then communicate to the wider community the outcome of the review, and the decision of the Board. They will also be advised of the start of the transition planning process to best accommodate the students moving to Silver Creek PS.

Below is the detailed plan for the communication rollout following Board approval on March 1, 2023:

1. Trustees and the school administrators at elementary schools impacted are to be notified.
2. School administrators will be required to identify redirected students in Aspen at time of registration.
3. Find My School tab on the HDSB website be revised to incorporate the redirection of residential properties to the schools mentioned in this report.

4. School Transportation to provide information and bussing plans for the families being redirected upon registration.
5. Human Resources to adjust the staffing for the schools impacted in these recommendations as needed.

Multi-Year Plan Alignment

This initiative aligns directly with Learning & Achievement.

Given the ongoing pressures at Ethel Gardiner Public School, and the number of portables required, an alternative plan to redirect students to a facility with available space will provide improved learning conditions, as opposed to exceeding capacity at Ethel Gardiner, which also impacts the ability to best operate special programming needs of students. This supports learning conditions to elevate student achievement identified in our Multi-Year Plan.

Financial Impact

Transportation costs may be increased, as the neighbourhood that we are redirecting to Silver Creek PS will not be a shared run, given the variance in bell times between Ethel Gardiner PS and the other Catholic School sites in the area. As such, it may be required that a Bell Time Review be completed for the area to find efficiencies. If there are none, then there is a likelihood of adding additional buses for this area (2-3 long term pending student enrolment).

Respectfully submitted,

Jennifer Fowler
Superintendent of Education

Scott Podrebarac
Superintendent of Education

Fred Thibeault
General Manager of Planning

Curtis Ennis
Director of Education

Board Report Number: 23024

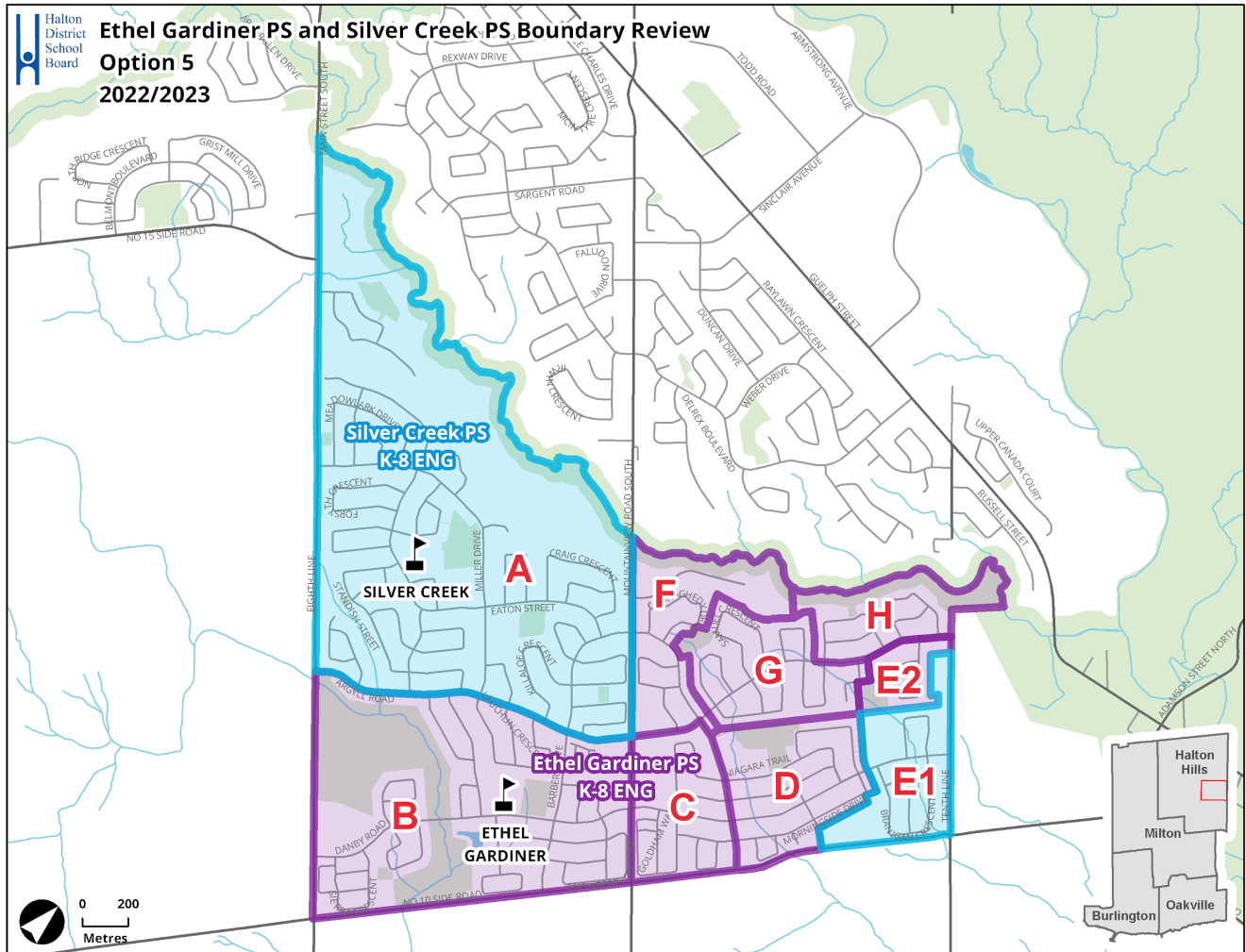
February 9, 2023

For Decision

APPENDIX A: BOUNDARY REVIEW STEERING COMMITTEE MEMBERS

1. Jeanne Gray - Trustee for Halton Hills Wards 1, 2, 3, and 4
2. Carol Baxter - Trustee for Oakville Wards 1 and 2
3. Scott Podrebarac - Superintendent of Education
4. Jennifer Fowler - Superintendent of Education
5. Fred Thibeault - General Manager of Planning
6. Laureen Choi - Senior Analyst
7. Mitch Gundy - Analyst
8. Andrew Capern - Senior Transportation Analyst HSTS

APPENDIX B: OPTION 5



Board Report Number: 23024

February 9, 2023
For Decision

Option 5 Projections

Updated: Jan 16, 2023

[What you need to know about this option Implementation](#)

School	Building Capacity	Portable	Total Capacity	Program	2022	2023	2024	2025	2026	2027	2028	2029	2030	2031	2032	Notes
Ethel Gardiner PS	614	Maximum : 10	844	ENG	713	620	595	588	584	576	567	563	554	545	537	JK-8 English, Gr5-8 Gifted, SPED programs. Some high density development remains.
				GIF	17	17	21	23	25	24	24	25	25	24	24	
		SC-SPED		14	14	14	14	14	14	14	14	14	14	14	14	
		Total		744	651	630	625	624	615	605	601	593	584	575		
	<i>Percent Utilization</i>				121%	106%	103%	102%	102%	100%	99%	98%	97%	95%	94%	
	<i>Available (+) / Shortage (-) of Pupil Places</i>				-130	-37	-16	-11	-10	-1	9	13	21	30	39	
	<i>Estimate number of portables</i>				8	5	4	4	3	3	2	2	2	2	1	
Silver Creek PS	645	Maximum : 12	921	ENG	387	496	508	509	506	503	511	518	537	520	510	JK-8 English, SPED programs. Impacted by development.
				GIF	0	0	0	0	0	0	0	0	0	0	0	
		SC-SPED		43	43	43	43	43	43	43	43	43	43	43	43	
		Total		430	539	551	552	549	546	554	561	580	563	553		
	<i>Percent Utilization</i>				67%	84%	85%	86%	85%	85%	86%	87%	90%	87%	86%	
	<i>Available (+) / Shortage (-) of Pupil Places</i>				215	106	94	93	96	99	91	84	65	82	92	
	<i>Estimate number of portables</i>				0	0	0	0	0	0	0	0	0	0	0	
Total Enrolment					1174	1191	1181	1177	1173	1161	1159	1162	1173	1147	1128	
Total Portables					8	5	4	4	3	3	2	2	2	2	1	

What you need to know about the option

Enrolments are based on Oct 31, 2022 Aspen extract.

Ethel Gardiner PS projected to decline to below 100% Building Capacity by 2028.

Silver Creek PS projected to grow to above 85% Building Capacity by 2025.

All development timing are a best estimates. Development phasing may advance or be delayed with updated information.

Estimated number of portables are best estimates of classroom usage and not on building Percent Utilization

Implementation

2023 - K to 7 ENG students move from Ethel Gardiner PS to Silver Creek PS (Zone E); Grade 8 remain at Ethel Gardiner PS to graduate with their cohort
no change to SPED or Gited programs at Ethel Gardiner or Silver Creek

Board Report Number: 23024

February 9, 2023

For Decision

