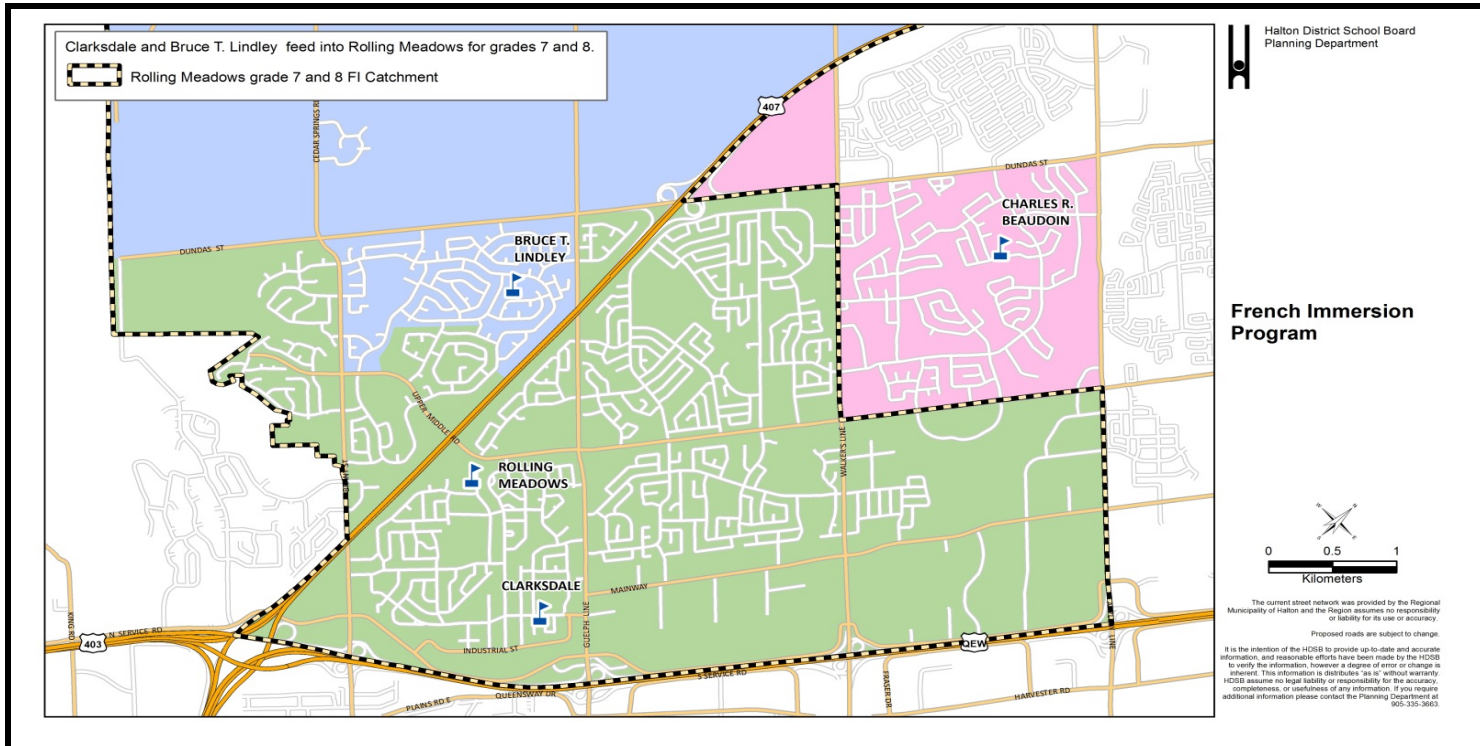
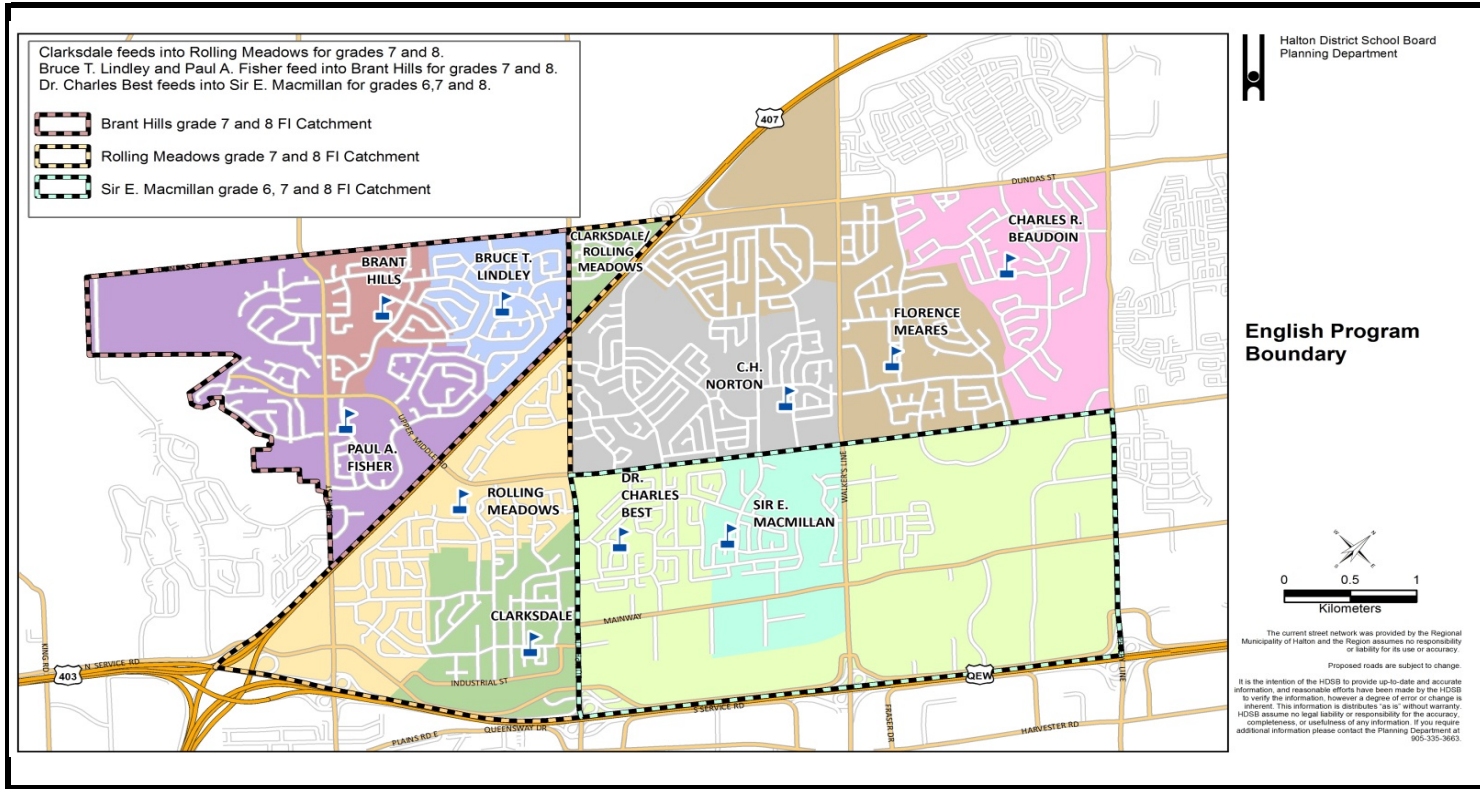


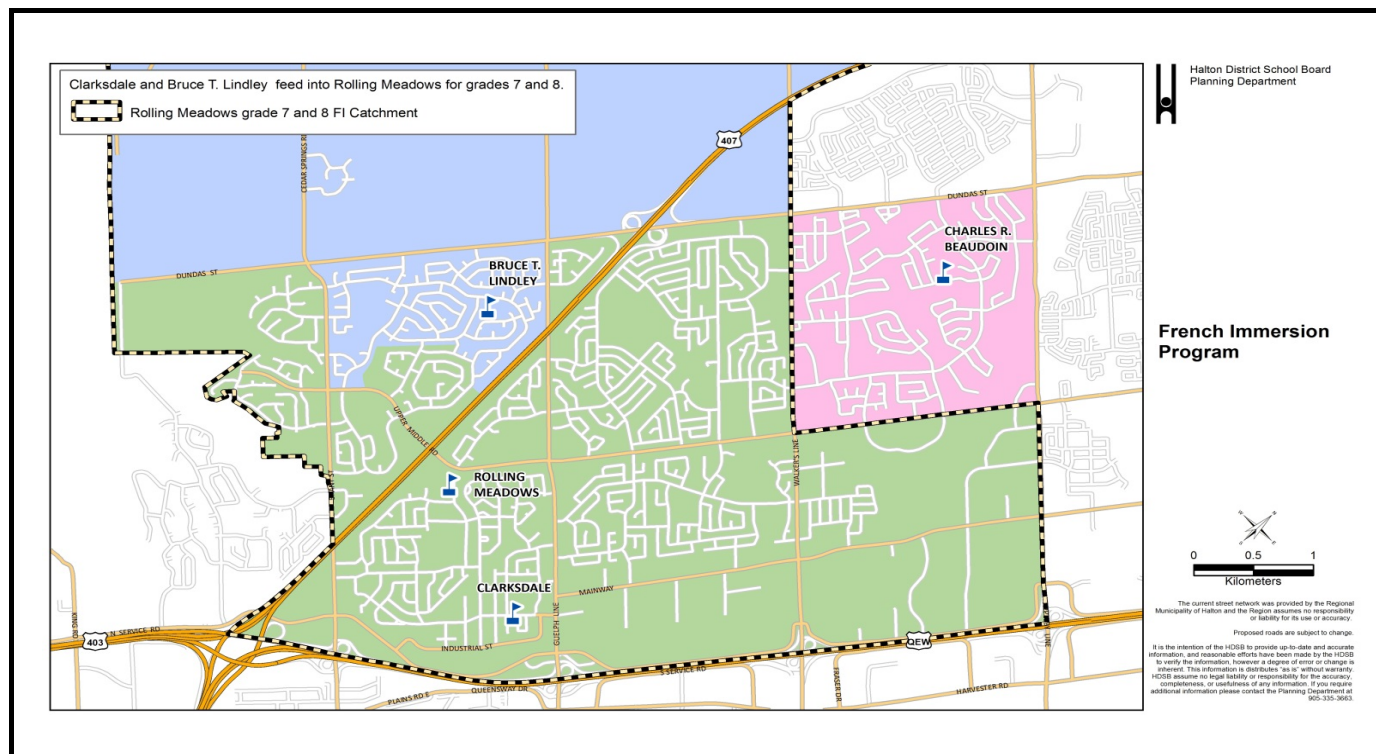
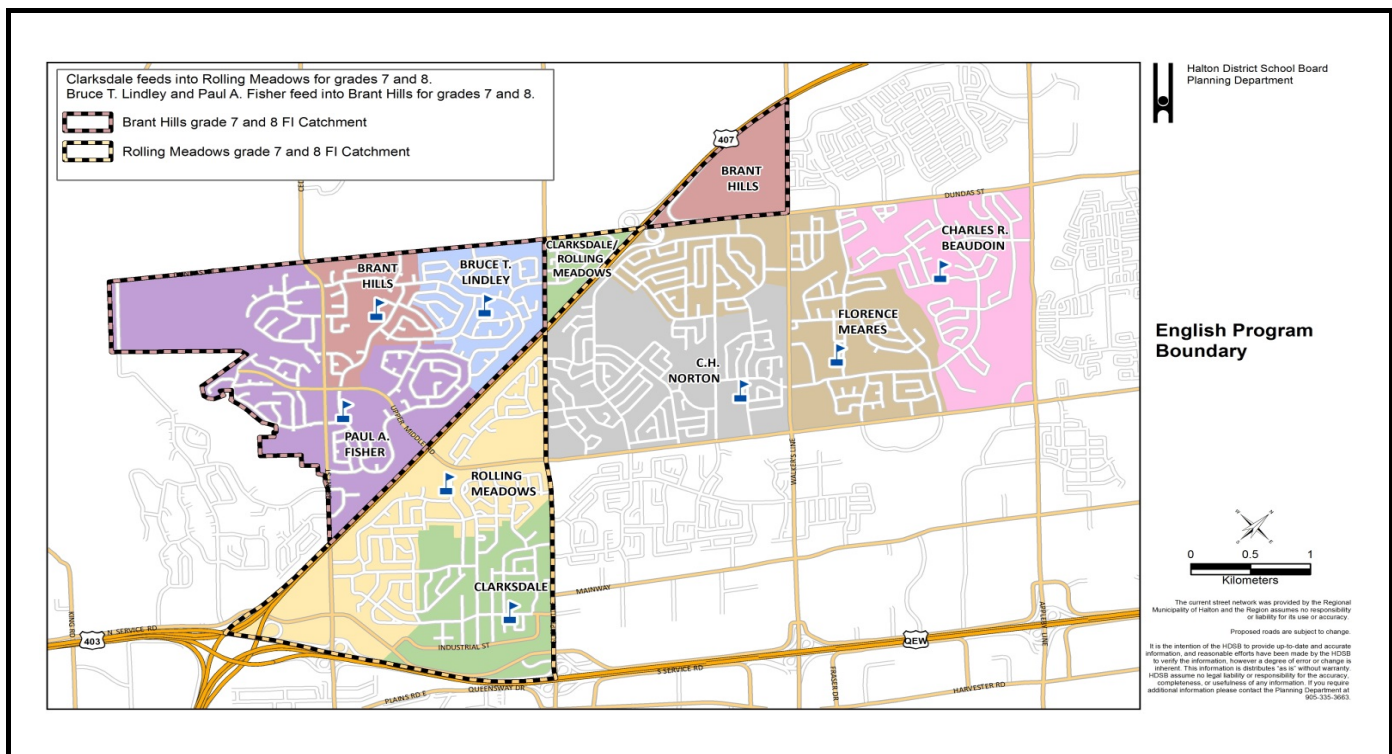
Current LTAP - Elementary Schools



School	Program	OTG	Port	Total	2016	2017	2018	2019	2020	2021	2022	2023	2024	2025	2026
Charles R. Beaudoin PS Grades K-8, FI 2 - 8	ENG	722	4	814	278	287	255	243	235	213	213	205	203	200	201
	FI				360	326	340	329	320	316	300	288	291	282	287
	SC-SPED				153	128	110	100	77	69	56	60	62	61	61
	Total				791	741	705	672	632	598	553	556	543	549	
	Available / Shortage of Pupil Places	-69	-19	17	50	90	124	153	169	166	179	173			
Percent Utilization					110%	103%	98%	93%	88%	83%	79%	77%	77%	75%	76%
Florence Meares PS Grades K-8	ENG	645	6	783	603	665	716	696	696	671	669	670	687	664	659
	SC-SPED				20	20	20	20	20	20	20	20	20	20	20
	Total				623	685	736	716	716	691	689	690	707	684	679
	Available / Shortage of Pupil Places				22	-40	-91	-71	-71	-46	-44	-45	-62	-39	-34
	Percent Utilization					97%	106%	114%	111%	111%	107%	107%	107%	110%	106%
Brant Hills PS Gr. K-8	ENG	420	6	558	270	291	282	286	284	280	291	298	294	286	286
	SC-SPED				4	4	4	4	4	4	4	4	4	4	
	Total				274	295	286	290	288	284	295	302	298	290	290
	Available Pupil Places				146	125	134	130	132	136	125	118	122	130	130
	Percent Utilization					65%	70%	68%	69%	69%	68%	70%	72%	71%	69%
Bruce T Lindley PS Grades K-6, FI 2 - 8	ENG	354	10	584	168	198	185	172	168	170	178	174	174	172	173
	FI				154	124	135	127	139	134	129	127	128	125	129
	Total				322	322	320	299	307	304	307	301	302	297	302
	Available Pupil Places				32	32	34	55	47	50	47	53	52	57	52
	Percent Utilization					91%	91%	90%	84%	87%	86%	87%	85%	85%	84%
CH Norton PS Gr. K-8	ENG	583	8	767	485	476	485	473	481	464	462	459	456	451	450
	SC-SPED				25	25	25	25	25	25	25	25	25	25	
	Total				510	501	510	498	506	489	487	484	481	476	475
	Available Pupil Places				212	221	212	224	216	233	235	238	241	246	247
	Percent Utilization					71%	69%	71%	69%	70%	68%	67%	67%	67%	66%
Clarksdale PS Grades K-6	ENG	553	12	829	176	194	179	169	174	175	174	176	177	180	182
	FI				261	217	221	209	197	192	193	198	200	208	214
	Total				437	411	400	378	371	367	367	374	377	388	396
	Available / Shortage of Pupil Places				116	142	153	175	182	186	179	176	165	157	
	Percent Utilization					79%	74%	72%	68%	67%	66%	66%	68%	68%	70%
Dr. Charles Best PS Grades K-5	ENG	297	11	550	257	253	244	228	236	233	234	233	231	233	236
	Total				257	253	244	228	236	233	234	233	231	233	236
	Available Pupil Places				40	44	53	69	61	64	63	64	66	64	61
	Percent Utilization					87%	85%	82%	77%	79%	78%	79%	78%	78%	79%
	Paul A. Fisher PS Gr. K-6	ENG	305	12	581	190	177	176	171	174	178	171	173	171	176
SC-SPED		0				0	0	0	0	0	0	0	0	0	
Total		190				177	176	171	174	178	171	173	171	176	172
Available Pupil Places		115				128	129	134	131	127	134	132	134	129	133
Percent Utilization					62%	58%	58%	56%	57%	58%	56%	57%	56%	56%	
Rolling Meadows PS Grades K-8, FI 7 & 8	ENG	584	12	860	379	370	349	366	372	358	354	356	356	350	343
	FI				92	110	101	123	130	113	113	115	117	113	106
	SC-SPED				11	11	11	11	11	11	11	11	11	11	11
	Total				482	491	461	500	513	482	478	482	484	474	460
	Available Pupil Places	102	93	123	84	71	102	106	102	100	110	124			
Percent Utilization					83%	84%	79%	86%	88%	83%	82%	83%	83%	81%	79%
Sir E. MacMillan PS Grades K-8, EXTF 7 & 8	ENG	415	6	553	257	262	265	259	252	251	246	251	249	245	242
	EXTF				77	78	71	73	82	70	65	71	70	68	63
	SC-SPED				6	6	6	6	6	6	6	6	6	6	6
	Total				340	346	342	338	340	327	317	328	325	319	311
	Available Pupil Places	75	69	73	77	75	88	98	87	90	96	104			
Percent Utilization					82%	83%	82%	81%	82%	79%	76%	79%	78%	77%	75%
Study Total		4878	87	6879	4226	4222	4180	4090	4083	3953	3914	3920	3932	3880	3870

Scenario 1 - Redirection to Brant Hills PS, Bruce T Lindley PS and Rolling Meadows PS

14-Dec-16



Rational: Students are directed to the community of schools west of the Dundas Triangle. English students are directed to a K-8 school, FI students directed to the corresponding FI schools.

Issues

Brant Hills PS will reach OTG capacity in 2019. 1-2 Portables will be required.
Limited space at the smaller sized facilities **Brant Hills PS** and **Bruce T. Lindley PS**.

Results

Charles R. Beaudoin PS: Utilizations rates to stabilize near 74%

Florence Meares PS: Utilizations rates to stabilize near 84%

Brant Hills PS: To receive English students, grades K - 8, from the Dundas Triangle.

Results can't

Brant Hills PS: Increase utilization rates to above 100% but within total capacity.

Bruce T. Lindley PS: To receive grades 2-6 FI students from the Dundas Triangle.

Bruce T. Lindley PS: To increase utilization rates to 89%

Paul A. Fisher PS: No impact to school boundaries.

Rolling Meadows PS: To receive grades 7 & 8 FI students from the Dundas Triangle.

Rolling Meadows PS: Minimal impacts.

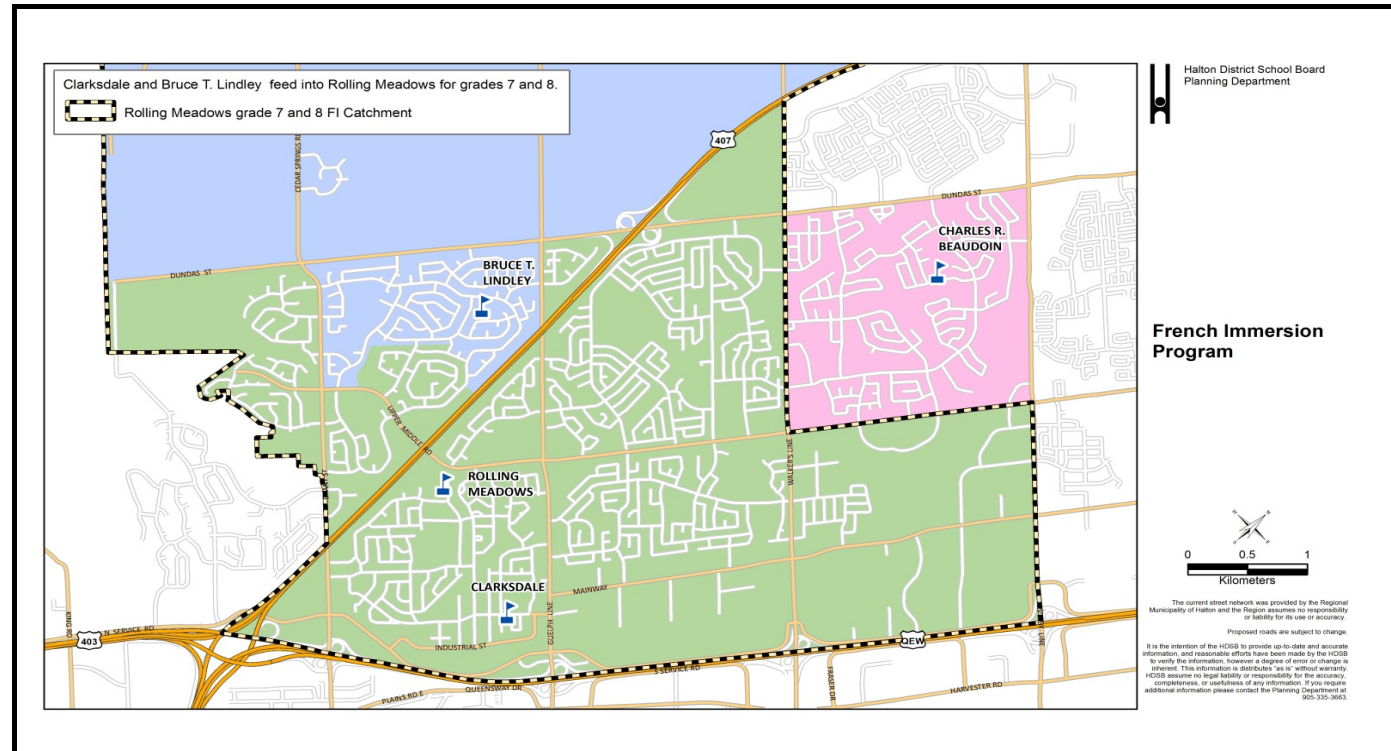
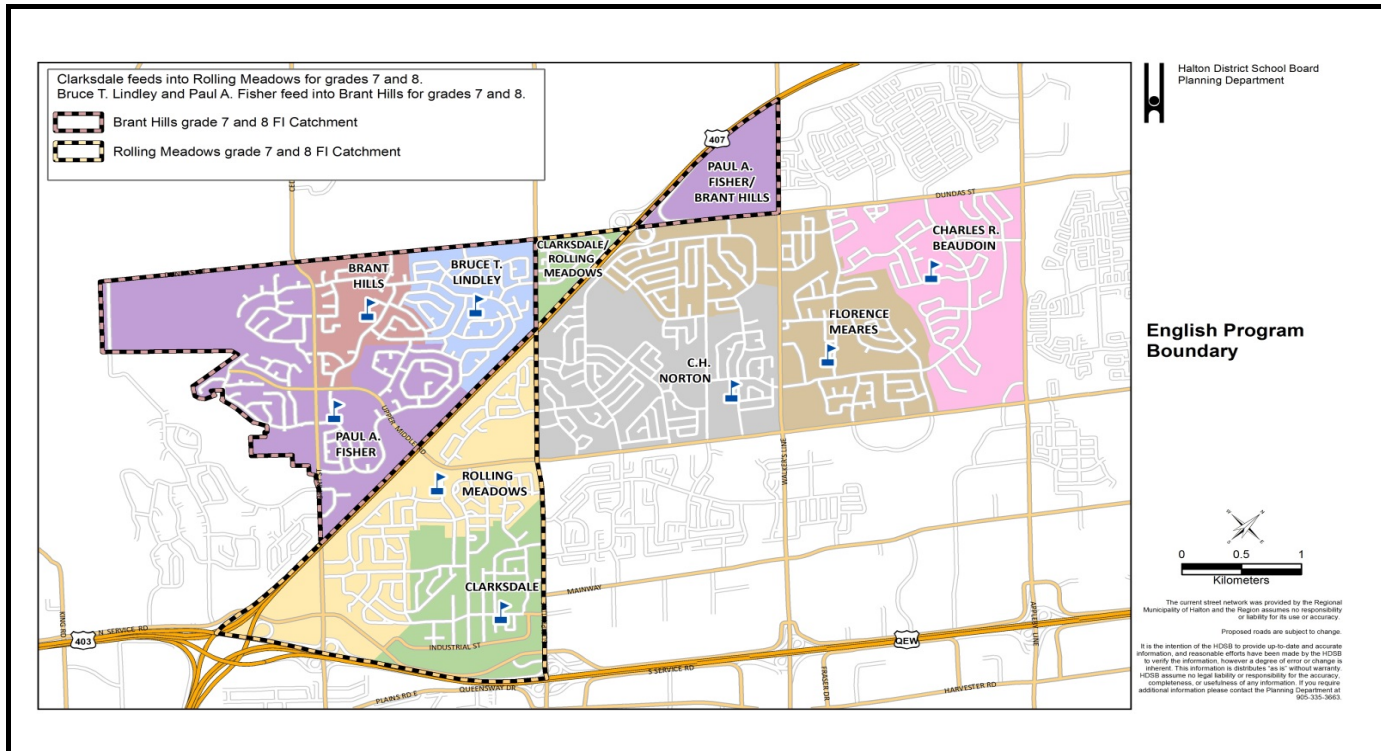
Students are directed to 3 schools.
It is recommended to align the secondary schools.

School	Program	OTG	Port	Total	2016	2017	2018	2019	2020	2021	2022	2023	2024	2025	2026
Charles R. Beaudoin PS Grades K-8	ENG	722	4	814	278	287	255	243	235	213	213	205	203	200	201
	FI				360	319	326	313	304	300	284	272	275	266	271
	SC-SPED				153	128	110	100	77	69	56	60	62	61	61
	Total				791	734	691	656	616	582	553	537	540	527	533
	Available / Shortage of Pupil Places				-69	-12	31	66	106	140	169	185	182	195	189
Percent Utilization					110%	102%	96%	91%	85%	81%	77%	74%	75%	73%	74%
Florence Meares PS Grades K-8	ENG	645	6	783	603	612	597	565	560	535	533	526	541	520	520
	SC-SPED				20	20	20	20	20	20	20	20	20	20	
	Total				623	632	617	585	580	553	546	561	540	540	
	Available / Shortage of Pupil Places				22	13	28	60	65	90	92	99	84	105	105
	Percent Utilization					97%	98%	96%	91%	90%	86%	86%	85%	87%	84%
Brant Hills PS Gr. K-8	ENG	420	6	558	270	344	401	417	420	416	427	442	440	430	425
	SC-SPED				4	4	4	4	4	4	4	4	4	4	
	Total				274	348	405	421	424	420	431	446	444	434	429
	Available / Shortage of Pupil Places				146	72	15	-1	-4	0	-11	-26	-24	-14	-9
	Percent Utilization					65%	83%	96%	100%	101%	100%	103%	106%	106%	103%

School	Program	OTG	Port	Total	2016	2017	2018	2019	2020	2021	2022	2023	2024	2025	2026
Bruce T Lindley PS Grades K-6	ENG	354	10	584	168	198	185	172	168	170	178	174	174	172	173
	FI				154	129	145	139	151	146	141	139	140	137	141
	Total				322	327	330	311	319	316	319	313	314	309	314
	Available Pupil Places				32	27	24	43	35	38	35	41	40	45	40
	Percent Utilization					91%	92%	93%	88%	90%	89%	90%	88%	89%	87%
Paul A. Fisher PS Gr. K-6	ENG	305	12	581	190	177	176	171	174	178	171	173	171	176	172
	SC-SPED				0	0	0	0	0	0	0	0	0	0	
	Total				190	177	176	171	174	178	171	173	171	176	172
	Available Pupil Places				115	128	129	134	131	127	134	132	134	129	133
	Percent Utilization					62%	58%	58%	56%	57%	58%	56%	57%	56%	58%
Rolling Meadows PS Grades K-8, FI 7 & 8	ENG	584	12	860	379	370	349	366	372	358	354	356	356	350	343
	FI				92	112	105	127	134	117	117	119	121	117	110
	SC-SPED				11	11	11	11	11	11	11	11	11	11	
	Total				482	493	465	504	517	486	482	486	488	478	464
	Available Pupil Places				102	91	119	80	67	98	102	98	96	106	120
Percent Utilization					83%	84%	80%	86%	89%	83%	83%	84%	82%	79%	
Study Total		3030	50	4180	2682	2711	2684	2648	2630	2537	2509	2501	2518	2464	2452

Option 2 - Redirection to Paul A Fisher PS, Brant Hills PS, Clarksdale PS and Rolling Meadows PS

13-Dec-16



Rational: Students are directed to the community of schools west of the Dundas Triangle. English students are dispersed to avoid portables, FI students directed to the corresponding FI schools

Issues

All school are under OTG capacity.
 Limited space at the smaller sized facilities, **Paul A. Fisher PS** and **Brant Hills PS**.

Results

Charles R. Beaudoin PS: Utilizations rates to stabilize near 74%

Florence Meares PS: Utilizations rates to stabilize near 84%

Paul A. Fisher PS: To receive English students, grades K-6, from the Dundas Triangle.

Paul A. Fisher PS: Utilization rates to increase to near 98% and expected to stabilize near 95%

Results con't

Brant Hills PS: To receive English students, grades 7 & 8, from the Dundas Triangle.

Brant Hills PS: Utilization rates to increase to 74%

Clarksdale PS: To receive grades 2-6 FI students from the Dundas Triangle.

Clarksdale PS: Utilization rates to increase to 70%

Rolling Meadows PS: To receive grades 7 & 8 FI students from the Dundas Triangle.

Rolling Meadows PS: Minimal impacts.

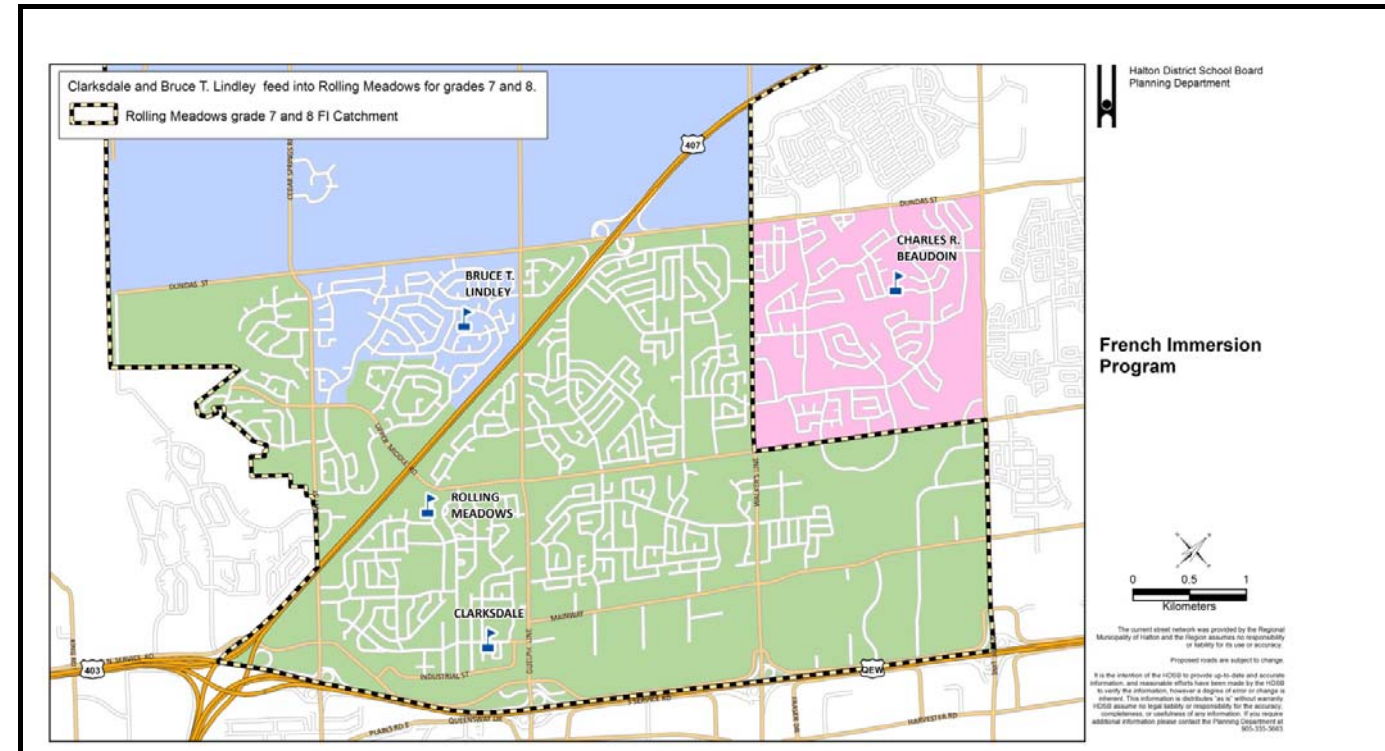
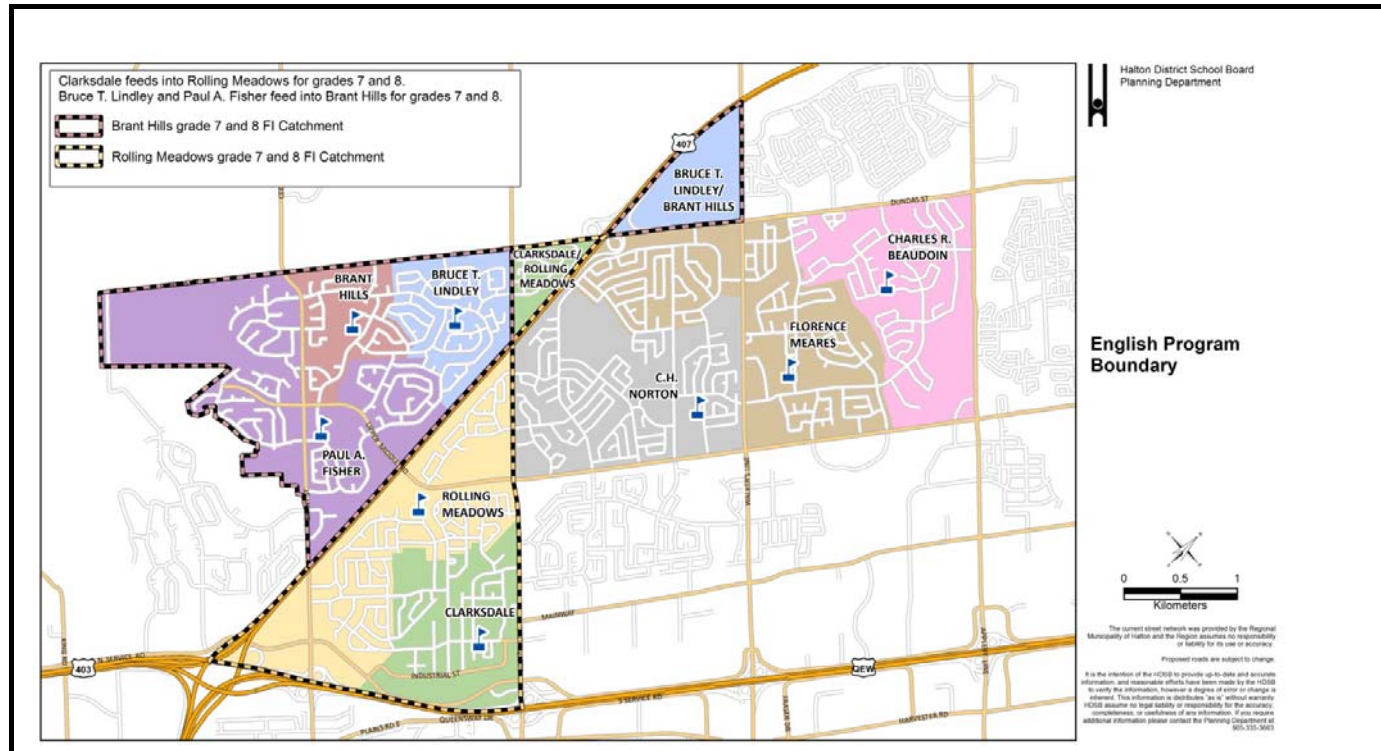
The area is directed to 4 schools.

It is recommended to align the secondary schools .

School	Program	OTG	Port	Total	2016	2017	2018	2019	2020	2021	2022	2023	2024	2025	2026
Charles R. Beaudoin PS Grades K-8	ENG	722	4	814	278	287	255	243	235	213	213	205	203	200	201
	FI				360	319	326	313	304	300	284	272	275	266	271
	SC-SPED				153	128	110	100	77	69	56	60	62	61	61
	Total				791	734	691	656	616	582	553	537	540	527	533
	Available / Shortage of Pupil Places				-69	-12	31	66	106	140	169	185	182	195	189
Percent Utilization	110%	102%	96%	91%	85%	81%	77%	74%	75%	73%	74%				
Florence Meares PS Grades K-8	ENG	645	6	783	603	612	597	565	560	535	533	526	541	520	520
	SC-SPED				20	20	20	20	20	20	20	20	20	20	
	Total				623	632	617	585	580	555	553	546	561	540	540
	Available / Shortage of Pupil Places				22	13	28	60	65	90	92	99	84	105	105
	Percent Utilization				97%	98%	96%	91%	90%	86%	86%	85%	87%	84%	84%
Brant Hills PS Gr. K-8	ENG	420	6	558	270	299	300	306	304	300	311	320	316	308	306
	SC-SPED				4	4	4	4	4	4	4	4	4	4	
	Total				274	303	304	310	308	304	315	324	320	312	310
	Available Pupil Places				146	117	116	110	112	116	105	96	100	108	110
	Percent Utilization				65%	72%	72%	74%	73%	72%	75%	77%	76%	74%	74%

School	Program	OTG	Port	Total	2016	2017	2018	2019	2020	2021	2022	2023	2024	2025	2026
Clarksdale PS Grades K-6	ENG	553	12	829	176	194	179	169	174	175	174	176	177	180	182
	FI				261	222	231	221	209	204	205	210	212	220	226
	Total				437	416	410	390	383	379	379	386	389	399	407
	Available Pupil Places				116	138	143	164	170	174	174	167	164	154	146
	Percent Utilization				79%	75%	74%	70%	69%	69%	69%	70%	70%	72%	74%
Paul A. Fisher PS Gr. K-6	ENG	305	12	581	190	222	277	282	290	294	287	295	295	298	291
	SC-SPED				0	0	0	0	0	0	0	0	0	0	
	Total				190	222	277	282	290	294	287	295	295	298	291
	Available Pupil Places				115	83	28	23	15	11	18	10	10	7	14
	Percent Utilization				62%	73%	91%	92%	95%	96%	94%	97%	97%	98%	95%
Rolling Meadows PS Grades K-8, FI 7 & 8	ENG	584	12	860	379	370	349	366	372	358	354	356	356	350	343
	FI				92	112	105	127	134	117	117	119	121	117	110
	SC-SPED				11	11	11	11	11	11	11	11	11	11	11
	Total				482	493	465	504	517	486	482	486	488	478	464
	Available Pupil Places				102	91	119	80	67	98	102	98	96	106	120
Percent Utilization	83%	84%	80%	86%	89%	83%	83%	83%	84%	82%	79%				
Study Total		3229	52	4425	2797	2800	2764	2727	2694	2600	2569	2574	2593	2554	2545

Option 3 - Redirection Brant Hills PS, Bruce T Lindley PS and Rolling Meadows PS



Rational: Students are directed to the community of schools west of the Dundas Triangle. English students and FI students are directed to the same JK-6 school

Issues

Bruce T. Lindley PS reaches OTG capacity in 2017. 3-4 portables will be required. Limited space at the smaller sized facilities, **Paul A. Fisher, Brant Hills PS** and **Bruce T. Lindley PS**.

Results

Charles R. Beaudoin PS: Utilization rates to stabilize near 74%

Florence Meares PS: Utilization rates to stabilize near 84%

Brant Hills PS: To receive English students, grades 7 & 8, from the Dundas Triangle.

Brant Hills PS: Utilization rates to increase to 74%

Results con't

Bruce T. Lindley PS: To receive grades 2-6 English and FI students from the Dundas Triangle.

Bruce T. Lindley PS: Utilization rates to increase to 124% but remain within total capacity.

Paul A. Fisher PS: No impact to school boundaries.

Rolling Meadows PS: To receive grades 7 & 8 FI students from the Dundas Triangle.

Rolling Meadows PS: Minimal impacts.

The area is directed to 3 schools.

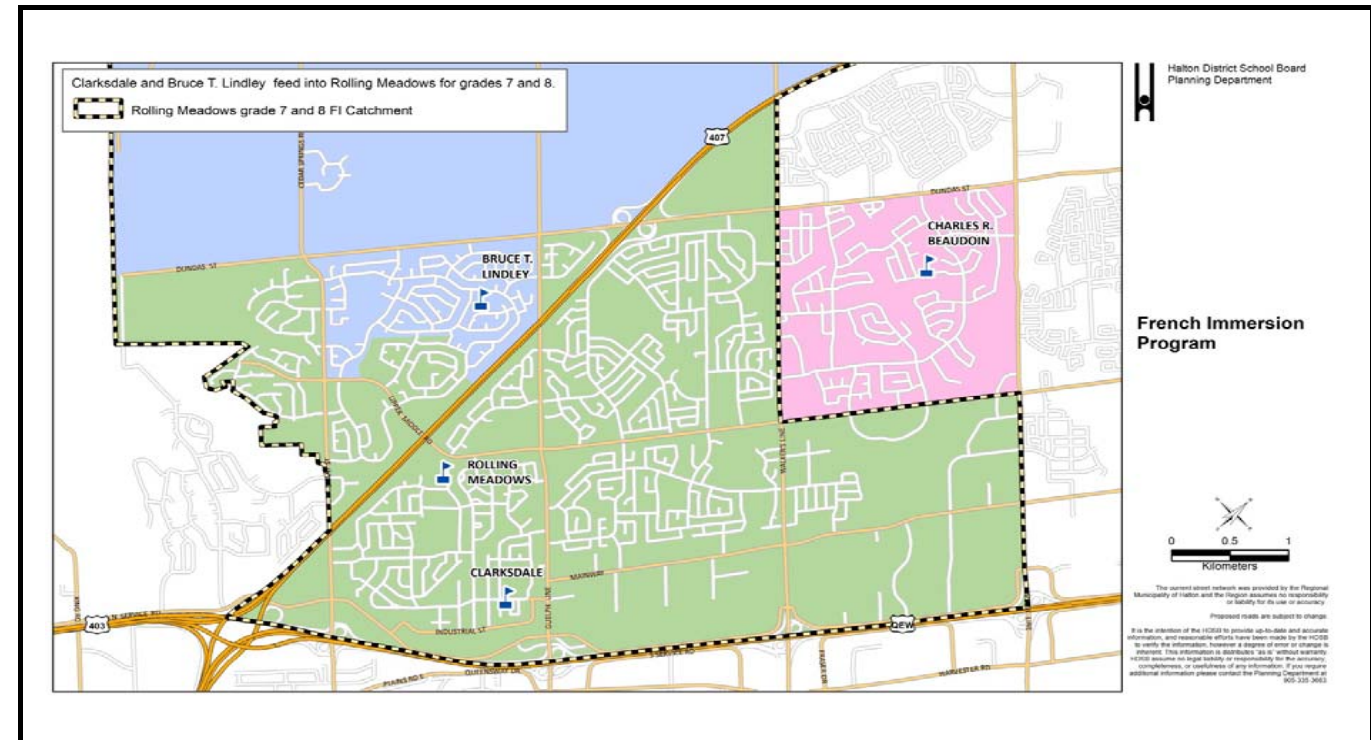
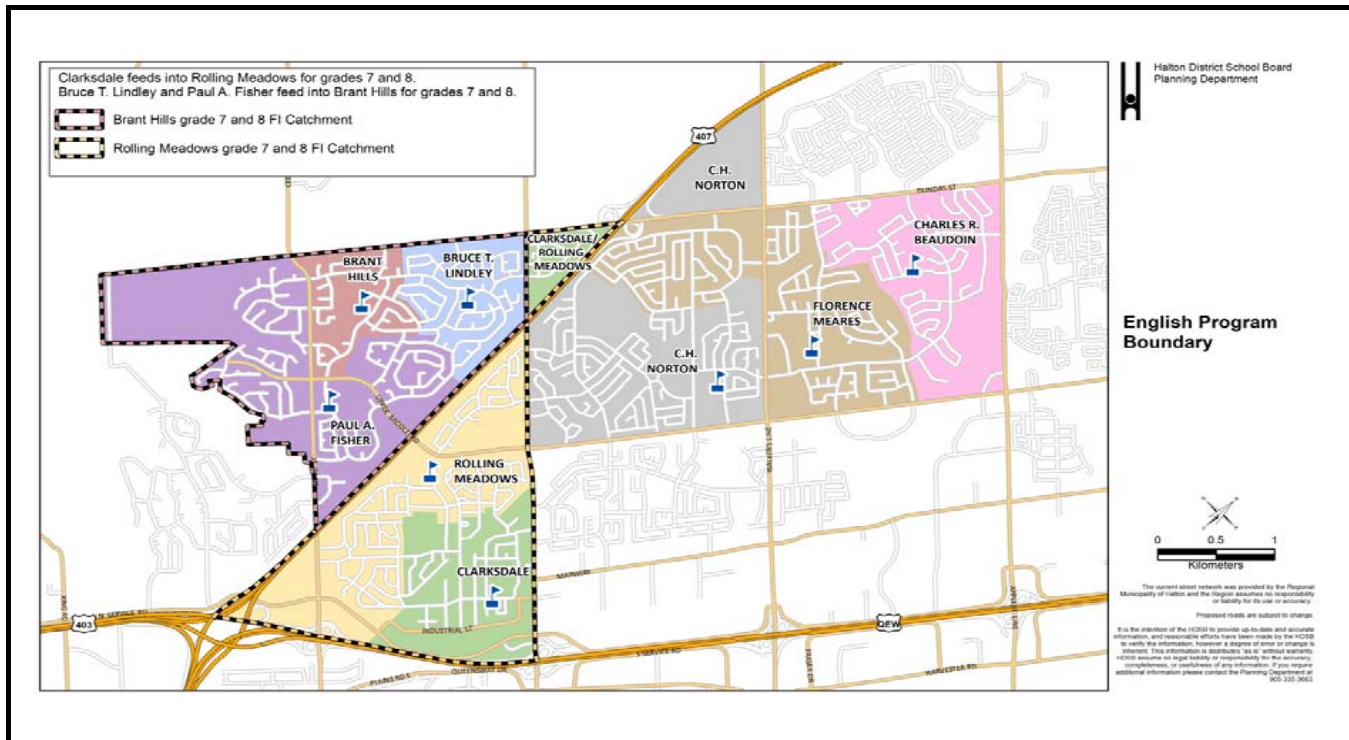
It is recommended to align the secondary schools .

School	Program	OTG	Port	Total	2016	2017	2018	2019	2020	2021	2022	2023	2024	2025	2026
Charles R. Beaudoin PS Grades K-8	ENG	722	4	814	278	287	255	243	235	213	213	205	203	200	201
	FI				360	319	326	313	304	300	284	272	275	266	271
	SC-SPED				153	128	110	100	77	69	56	60	62	61	61
	Total	791	734	691	656	616	582	553	537	540	527	533			
	Available / Shortage of Pupil Places	-69	-12	31	66	106	140	169	185	182	195	189			
Percent Utilization	110%	102%	96%	91%	85%	81%	77%	74%	75%	73%	74%				
Florence Meares PS Grades K-8	ENG	645	6	783	603	612	597	565	560	535	533	526	541	520	520
	SC-SPED				20	20	20	20	20	20	20	20	20	20	
	Total				623	632	617	585	580	555	553	546	561	540	540
	Available / Shortage of Pupil Places	22	13	28	60	65	90	92	99	84	105	105			
	Percent Utilization	97%	98%	96%	91%	90%	86%	86%	85%	87%	84%	84%			
Brant Hills PS Gr. K-8	ENG	420	6	558	270	299	300	306	304	300	311	320	316	308	306
	SC-SPED				4	4	4	4	4	4	4	4	4	4	
	Total				274	303	304	310	308	304	315	324	320	312	310
	Available Pupil Places	146	117	116	110	112	116	105	96	100	108	110			
	Percent Utilization	65%	72%	72%	74%	73%	72%	75%	77%	76%	74%	74%			

School	Program	OTG	Port	Total	2016	2017	2018	2019	2020	2021	2022	2023	2024	2025	2026
Bruce T Lindley PS Grades K-6	ENG	354	10	584	168	243	286	283	284	286	294	296	298	294	292
	FI				154	129	145	139	151	146	141	139	140	137	141
	Total				322	372	431	422	435	432	435	435	438	431	433
	Available Pupil Places	32	-18	-77	-68	-81	-78	-81	-81	-84	-77	-79			
	Percent Utilization	91%	105%	122%	119%	123%	122%	123%	123%	124%	122%	122%			
Paul A. Fisher PS Gr. K-6	ENG	305	12	581	190	177	176	171	174	178	171	173	171	176	172
	SC-SPED				0	0	0	0	0	0	0	0	0		
	Total				190	177	176	171	174	178	171	173	171	176	172
	Available Pupil Places	115	128	129	134	131	127	134	132	134	129	133			
	Percent Utilization	62%	58%	58%	56%	57%	58%	56%	57%	56%	58%	56%			
Rolling Meadows PS Grades K-8, FI 7 & 8	ENG	584	12	860	379	370	349	366	372	358	354	356	356	350	343
	FI				92	112	105	127	134	117	117	119	121	117	110
	SC-SPED				11	11	11	11	11	11	11	11	11	11	
	Total	482	493	465	504	517	486	482	486	488	478	464			
	Available Pupil Places	102	91	119	80	67	98	102	98	96	106	120			
Percent Utilization	83%	84%	80%	86%	89%	83%	83%	83%	84%	82%	79%				
Study Total		3030	50	4180	2682	2711	2684	2648	2630	2537	2509	2501	2518	2464	2452

Option 4 - Redirection to CH Norton PS, Clarksdale PS, and Rolling Meadows PS

14-Dec-16



Rational: Students are directed to the community of schools south of the Dundas Triangle. English students are directed to the closest available K-8 school, FI students directed to the corresponding FI schools.

Issues

C. H. Norton PS will reach OTG capacity in 2018. 2-3 portables will be required.

Results

Charles R. Beaudoin PS: Utilization rates to stabilize near 74%

Florence Meares PS: Utilization rates to stabilize near 84%

C. H. Norton PS: To receive English students, grades K - 8, from the Dundas Triangle.

Results con't

C. H. Norton PS: The grade 8 cohort is divided between two schools: **Lester B. Pearson HS** and **M.M. Robinson HS**.

Clarksdale PS: To receive grades 2-6 FI students from the Dundas Triangle.

Clarksdale PS: Utilization rates to increase to 70%

Rolling Meadows PS: To receive grades 7 & 8 FI students from the Dundas Triangle.

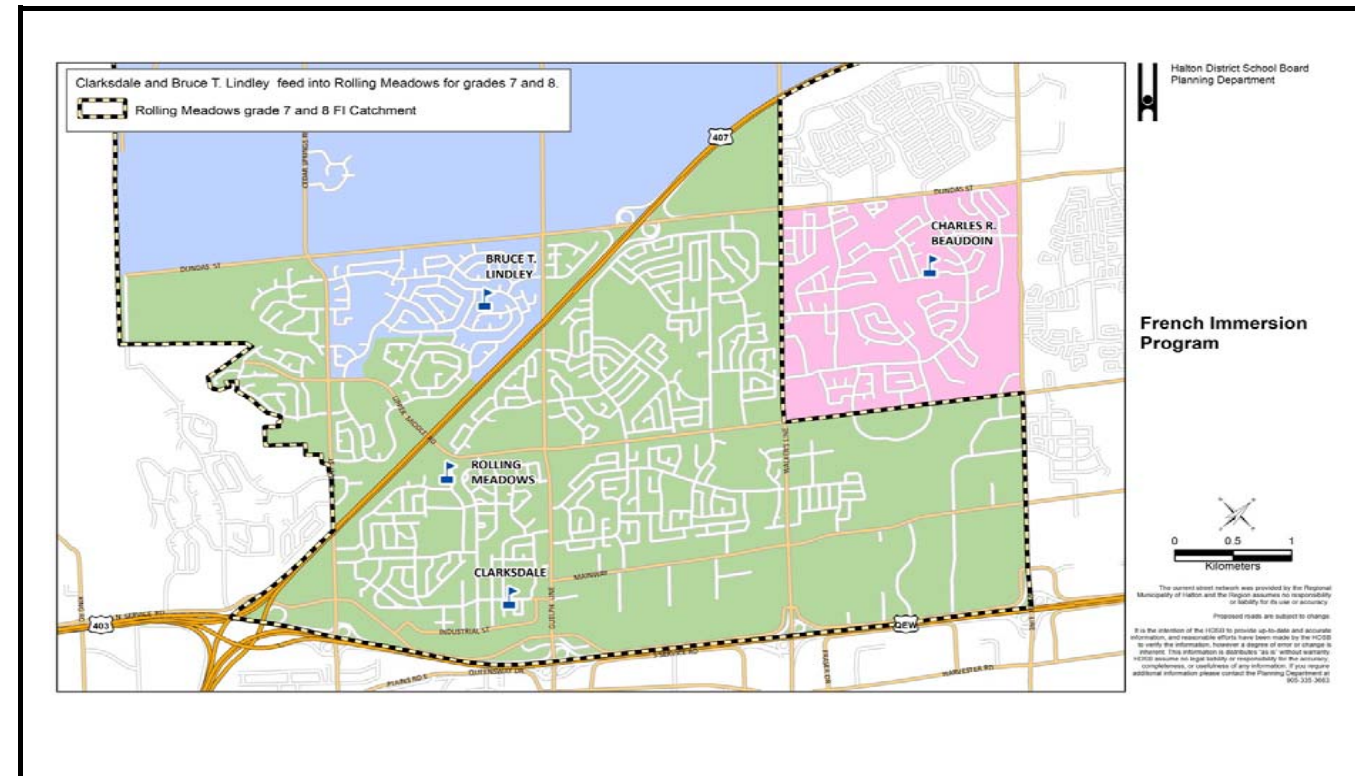
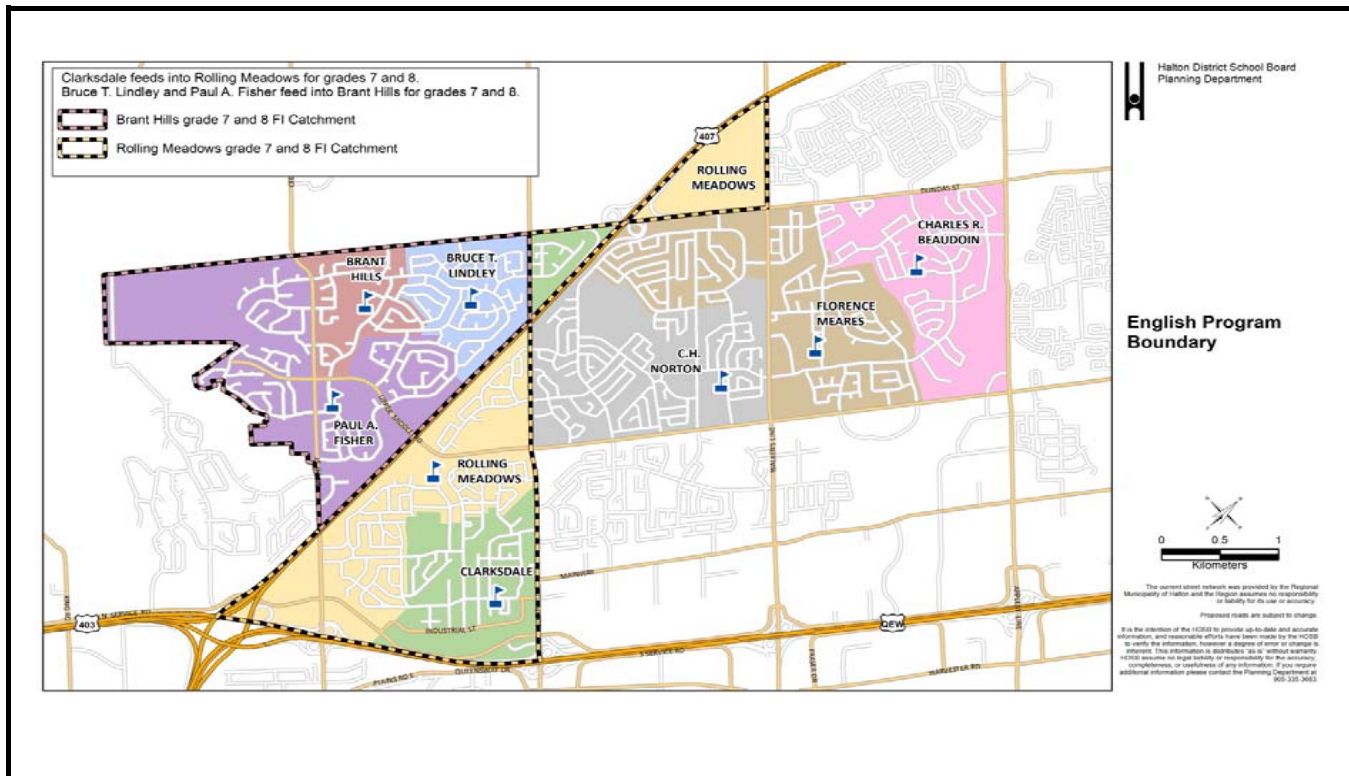
Rolling Meadows PS: Minimal impacts.

Students are directed to 3 schools.

It is recommended to align the secondary schools .

School	Program	OTG	Port	Total	2016	2017	2018	2019	2020	2021	2022	2023	2024	2025	2026
Charles R. Beaudoin PS Grades K-8	ENG	722	4	814	278	287	255	243	235	213	213	205	203	200	201
	FI				360	319	326	313	304	300	284	272	275	266	271
	SC-SPED				153	128	110	100	77	69	56	60	62	61	61
	Total				791	734	691	656	616	582	553	537	540	527	533
	Available / Shortage of Pupil Places				-69	-12	31	66	106	140	169	185	182	195	189
Percent Utilization	110%	102%	96%	91%	85%	81%	77%	74%	75%	73%	74%				
Florence Meares PS Grades K-8	ENG	645	6	783	603	612	597	565	560	535	533	526	541	520	520
	SC-SPED				20	20	20	20	20	20	20	20	20	20	
	Total				623	632	617	585	580	555	553	546	561	540	540
	Available / Shortage of Pupil Places				22	13	28	60	65	90	92	99	84	105	105
	Percent Utilization				97%	98%	96%	91%	90%	86%	86%	85%	87%	84%	84%
CH Norton PS Gr. K-8	ENG	583	8	767	485	530	604	605	618	601	599	604	603	597	591
	SC-SPED				25	25	25	25	25	25	25	25	25	25	
	Total				510	555	629	630	643	626	624	629	628	622	616
	Available Pupil Places				73	28	-46	-47	-60	-43	-41	-46	-45	-39	-33
	Percent Utilization				87%	95%	108%	108%	110%	107%	107%	108%	108%	107%	106%

School	Program	OTG	Port	Total	2016	2017	2018	2019	2020	2021	2022	2023	2024	2025	2026
Clarksdale PS Grades K-6	ENG	553	12	829	176	194	179	169	174	175	174	176	177	180	182
	FI				261	222	231	221	209	204	205	210	212	220	226
	Total				437	416	410	390	383	379	386	389	399	407	
	Available / Shortage of Pupil Places				116	138	143	164	170	174	167	164	154	146	
	Percent Utilization				79%	75%	74%	70%	69%	69%	70%	70%	72%	74%	
Rolling Meadows PS Grades K-8, FI 7 & 8	ENG	584	12	860	379	370	349	366	372	358	354	356	356	350	343
	FI				92	112	105	127	134	117	117	119	121	117	110
	SC-SPED				11	11	11	11	11	11	11	11	11	11	
	Total				482	493	465	504	516	485	481	485	487	477	463
	Available / Shortage of Pupil Places				102	92	119	81	68	99	103	99	107	121	
Percent Utilization	83%	84%	80%	86%	88%	83%	82%	83%	83%	82%	79%				
Study Total		3087	42	4053	2843	2829	2812	2764	2738	2627	2590	2583	2605	2565	2559



Rational: Students are directed to the community of schools south of the Dundas Triangle. English students are directed to the a K-8 school, FI students directed to the corresponding FI schools.

Issues

Rolling Meadows PS will reach OTG capacity in 2018. 2-3 portables will be required,

Results

Charles R. Beaudoin PS: Utilizations rates to stabilize near 74%

Florence Meares PS: Utilization rates to stabilize near 84%

C. H. Norton PS: No impact to school boundaries.

Results con't

Clarksdale PS: To receive grades 2-6 FI students from the Dundas Triangle.

Clarksdale PS: Utilization rates to increase to above 70%

Rolling Meadows PS: To receive grades K-8 English students from the Dundas Triangle.

Rolling Meadows PS: To receive grades 7 & 8 FI students from the Dundas Triangle.

Rolling Meadows PS: Utilization rates to stabilize near 106% of OTG but remain with total capacity.

Rolling Meadows PS: Minimal impacts to the FI program.

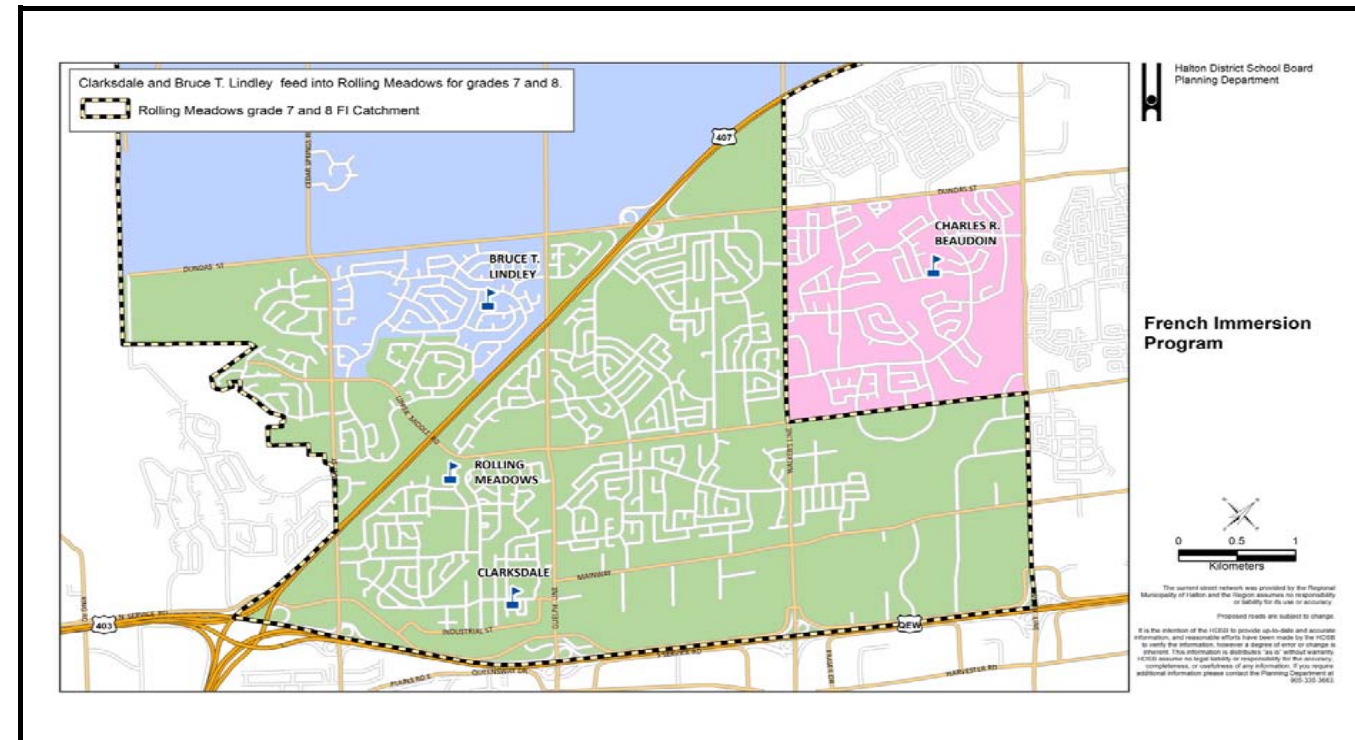
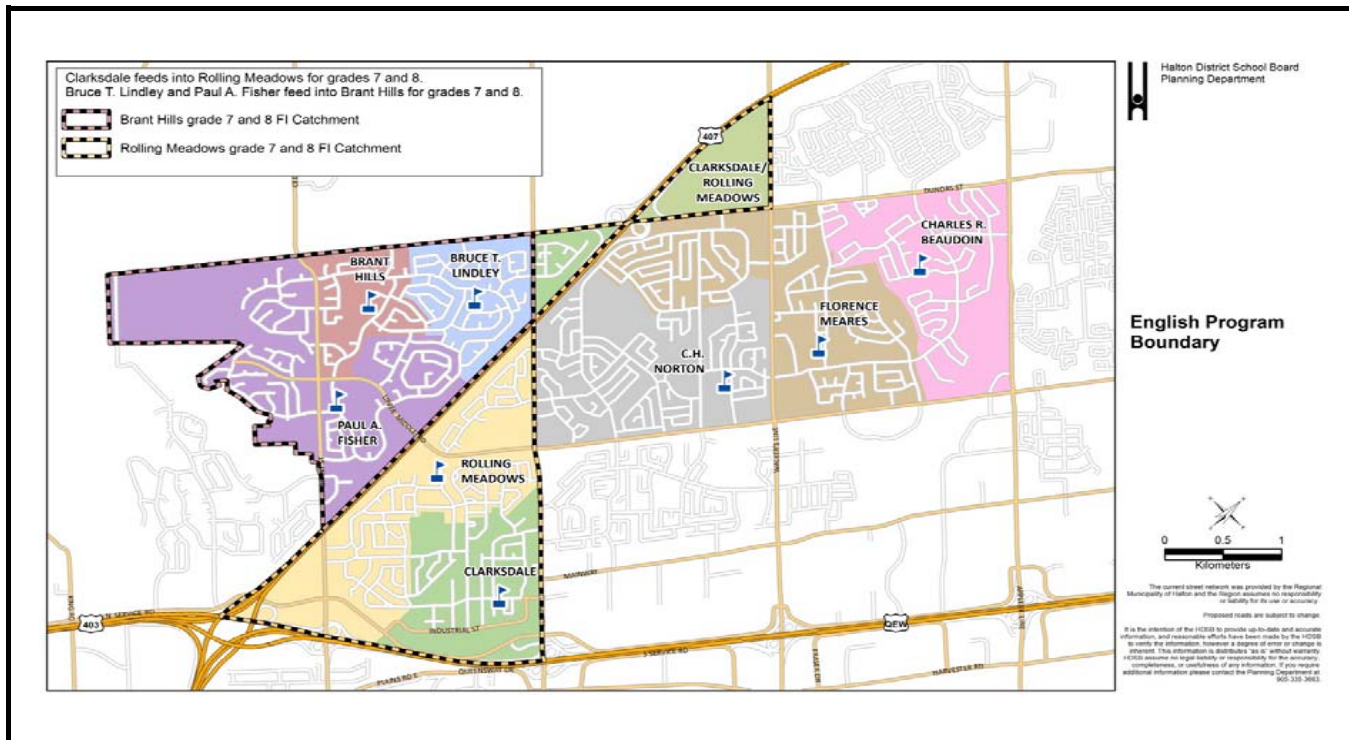
Students are directed to 2 schools.

It is recommended to align the secondary schools .

School	Program	OTG	Port	Total	2016	2017	2018	2019	2020	2021	2022	2023	2024	2025	2026
Charles R. Beaudoin PS Grades K-8	ENG	722	4	814	278	287	255	243	235	213	213	205	203	200	201
	FI				360	319	326	313	304	300	284	272	275	266	271
	SC-SPED				153	128	110	100	77	69	56	60	62	61	61
	Total				791	734	691	656	616	582	553	537	540	527	533
	Available / Shortage of Pupil Places	-69	-12	31	66	106	140	169	185	182	195	189			
Percent Utilization	110%	102%	96%	91%	85%	81%	77%	74%	75%	73%	74%				
Florence Meares PS Grades K-8	ENG	645	6	783	603	612	597	565	560	535	533	526	541	520	520
	SC-SPED				20	20	20	20	20	20	20	20	20	20	
	Total				623	632	617	585	580	555	553	546	561	540	540
	Available / Shortage of Pupil Places				22	13	28	60	65	90	92	99	84	105	105
	Percent Utilization	97%	98%	96%	91%	90%	86%	86%	85%	87%	84%	84%			
CH Norton PS Gr. K-8	ENG	583	8	767	485	477	485	474	482	465	463	460	457	453	452
	SC-SPED				25	25	25	25	25	25	25	25	25	25	
	Total				510	502	510	499	507	490	488	485	482	478	477
	Available Pupil Places				73	81	73	84	76	93	95	98	101	105	106
	Percent Utilization	87%	86%	87%	86%	87%	84%	84%	83%	83%	82%	82%			

School	Program	OTG	Port	Total	2016	2017	2018	2019	2020	2021	2022	2023	2024	2025	2026
Clarksdale PS Grades K-6	ENG	553	12	829	176	194	179	169	174	175	174	176	177	180	182
	FI				261	222	231	221	209	204	205	210	212	220	226
	Total				437	416	410	390	383	379	379	386	389	399	407
	Available / Shortage of Pupil Places				116	137	143	163	170	174	174	167	164	154	146
	Percent Utilization	79%	75%	74%	71%	69%	69%	69%	70%	70%	72%	74%			
Rolling Meadows PS Grades K-8, FI 7 & 8	ENG	584	12	860	379	423	468	497	508	494	490	500	502	494	482
	FI				92	112	105	127	134	117	117	119	121	117	110
	SC-SPED				11	11	11	11	11	11	11	11	11	11	11
	Total				482	545	584	634	652	621	617	629	633	621	602
	Available / Shortage of Pupil Places	102	39	0	-50	-68	-37	-33	-45	-49	-37	-18			
Percent Utilization	83%	93%	100%	109%	112%	106%	106%	108%	108%	106%	103%				
Study Total		3087	42	4053	2843	2829	2812	2764	2738	2627	2590	2583	2605	2565	2559

Option 6 - Redirection to Clarksdale PS, and Rolling Meadows PS



Rational: Students are directed to the community of schools south of the Dundas Triangle. English and FI students are directed to the same schools for the same grades.

Issues

All schools are expected to remain under OTG capacity
More students may elect to attend the FI program.

Results

Charles R. Beaudoin PS: Utilization rates to stabilize near 74%

Florence Meares PS: Utilization rates to stabilize near 84%

C. H. Norton PS: No impact to school boundaries.

Results con't

Clarksdale PS: To receive grades K-6 English students from the Dundas Triangle.

Clarksdale PS: To receive grades 2-6 FI students from the Dundas Triangle.

Clarksdale PS: Utilization is expected to increase above 90% and stabilize near 95% utilization.

Rolling Meadows PS: To receive grades 7 & 8 English students from the Dundas Triangle.

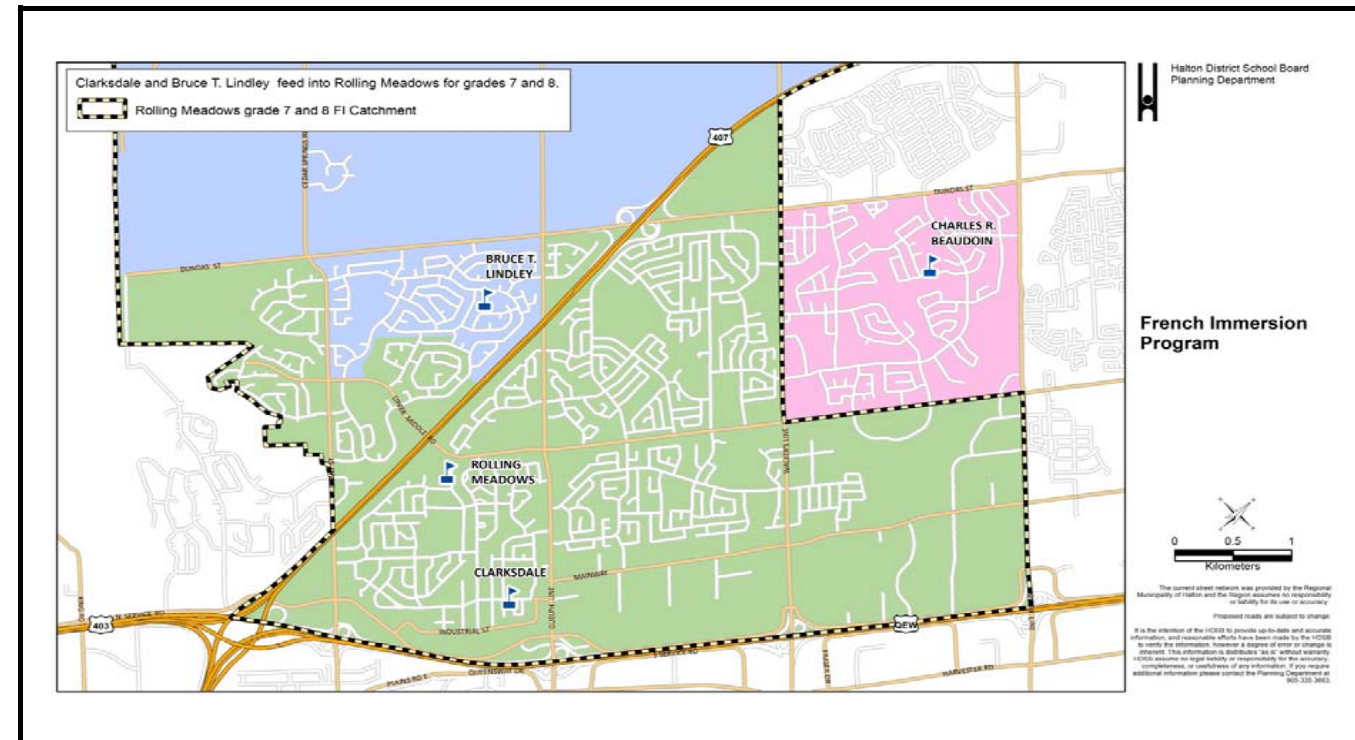
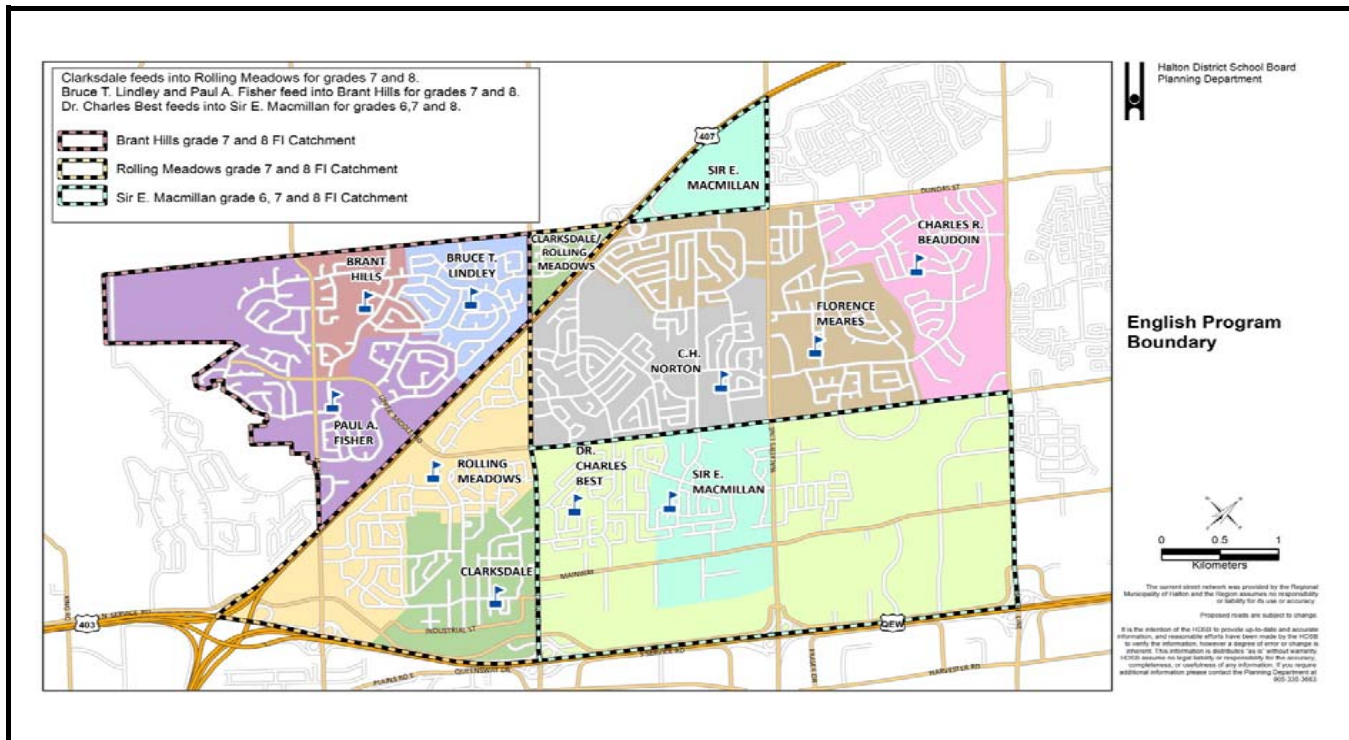
Rolling Meadows PS: To receive grades 7 & 8 FI students from the Dundas Triangle.

Rolling Meadows PS: Utilization rates are expected to increase and stabilize above 80% of OTG.

Community is to attend the same 2 schools regardless of program.
It is recommended to align the secondary schools .

School	Program	OTG	Port	Total	2016	2017	2018	2019	2020	2021	2022	2023	2024	2025	2026
Charles R. Beaudoin PS Grades K-8	ENG	722	4	814	278	287	255	243	235	213	213	205	203	200	201
	FI				360	319	326	313	304	300	284	272	275	266	271
	SC-SPED				153	128	110	100	77	69	56	60	62	61	61
	Total				791	734	691	656	616	582	553	537	540	527	533
	Available / Shortage of Pupil Places	-69	-12	31	66	106	140	169	185	182	195	189			
Percent Utilization	110%	102%	96%	91%	85%	81%	77%	74%	75%	73%	74%				
Florence Meares PS Grades K-8	ENG	645	6	783	603	612	597	565	560	535	533	526	541	520	520
	SC-SPED				20	20	20	20	20	20	20	20	20	20	
	Total				623	632	617	585	580	555	553	546	561	540	540
	Available / Shortage of Pupil Places				22	13	28	60	65	90	92	99	84	105	105
	Percent Utilization	97%	98%	96%	91%	90%	86%	86%	85%	87%	84%	84%			
CH Norton PS Gr. K-8	ENG	583	8	767	485	477	485	474	482	465	463	460	457	453	452
	SC-SPED				25	25	25	25	25	25	25	25	25	25	
	Total				510	502	510	499	507	490	488	485	482	478	477
	Available Pupil Places				73	81	73	84	76	93	95	98	101	105	106
	Percent Utilization	87%	86%	87%	86%	87%	84%	84%	83%	83%	82%	82%			

School	Program	OTG	Port	Total	2016	2017	2018	2019	2020	2021	2022	2023	2024	2025	2026
Clarksdale PS Grades K-6	ENG	553	12	829	176	239	280	280	290	291	290	298	301	302	301
	FI				261	222	231	221	209	204	205	210	212	220	226
	Total				437	461	511	501	499	495	508	513	521	526	
	Available / Shortage of Pupil Places				116	92	42	52	54	58	45	40	32	27	
	Percent Utilization	79%	83%	92%	91%	90%	90%	92%	93%	94%	95%				
Rolling Meadows PS Grades K-8, FI 7 & 8	ENG	584	12	860	379	378	367	386	392	378	374	378	378	372	363
	FI				92	112	105	127	134	117	117	119	121	117	110
	SC-SPED				11	11	11	11	11	11	11	11	11	11	
	Total				482	500	483	523	536	505	507	509	499	483	
	Available / Shortage of Pupil Places	102	84	101	61	48	79	83	77	75	85	101			
Percent Utilization	83%	86%	83%	90%	92%	86%	86%	87%	87%	85%	83%				
Study Total		3087	42	4053	2843	2829	2812	2764	2738	2627	2590	2583	2605	2565	2559



Rational: Students are directed to the community of schools south of the Dundas Triangle. English students are directed to the a K-8 school, FI students directed to the corresponding FI schools.

Issues

Sir E. MacMillan PS will reach OTG capacity in 2018. 2-3 portables will be required. Limited space at the smaller sized facilities, Sir E. MacMillan PS

Results

Charles R. Beaudoin PS: Utilization rates to stabilize near 74%

Florence Meares PS: Utilization rates to stabilize near 84%

Clarksdale PS: To receive grades 2-6 FI students from the Dundas Triangle.

Clarksdale PS: Utilization rates is increase to above 75%

Results con't

Dr. Charles Best PS: No impact to school boundaries.

Sir E. MacMillan PS: To receive grades K-8 English students from the Dundas Triangle.

Sir E. MacMillan PS: Utilization expected to increase to 115% but remain within total capacity.

Rolling Meadows PS: To receive grades 7 & 8 FI students from the Dundas Triangle.

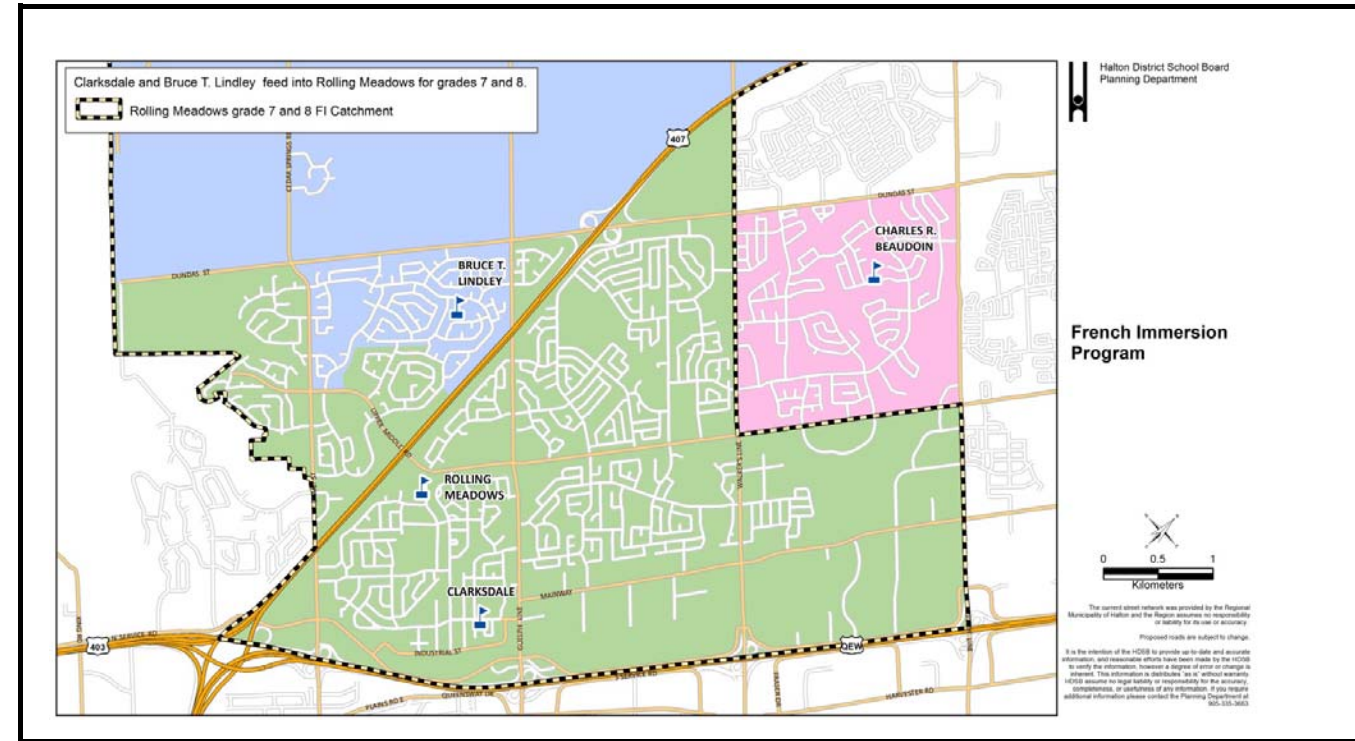
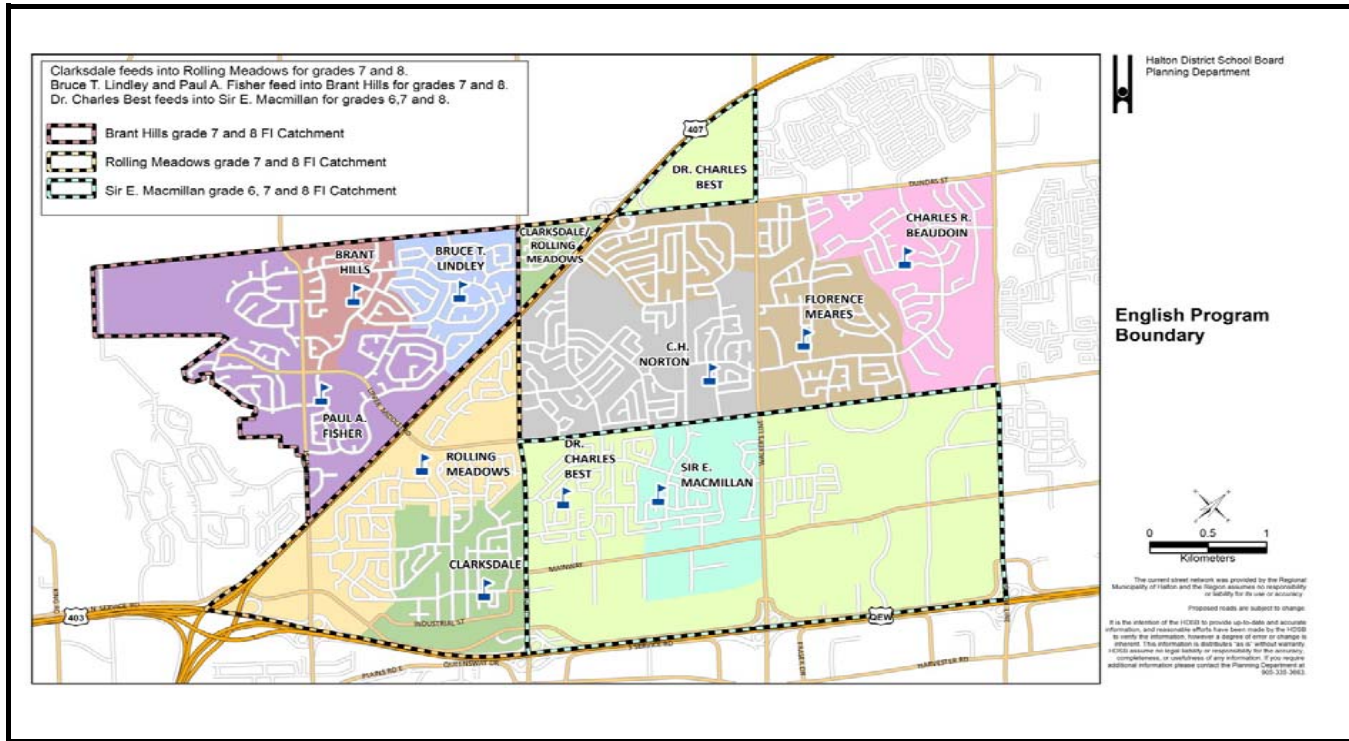
Rolling Meadows PS: Minimal impacts to the FI program.

Students are directed to 3 schools and 2 different high schools.

It is recommended to align the secondary schools .

School	Program	OTG	Port	Total	2016	2017	2018	2019	2020	2021	2022	2023	2024	2025	2026
Charles R. Beaudoin PS Grades K-8	ENG	722	4	814	278	287	255	243	235	213	213	205	203	200	201
	FI				360	319	326	313	304	300	284	272	275	266	271
	SC-SPED				153	128	110	100	77	69	56	60	62	61	61
	Total				791	734	691	656	616	582	553	537	540	527	533
	Available / Shortage of Pupil Places	-69	-12	31	66	106	140	169	185	182	195	189			
Percent Utilization	110%	102%	96%	91%	85%	81%	77%	74%	75%	73%	74%				
Florence Meares PS Grades K-8	ENG	645	6	783	603	612	597	565	560	535	533	526	541	520	520
	SC-SPED				20	20	20	20	20	20	20	20	20	20	
	Total				623	632	617	585	580	555	553	546	561	540	540
	Available / Shortage of Pupil Places				22	13	28	60	65	90	92	99	84	105	105
	Percent Utilization	97%	98%	96%	91%	90%	86%	86%	85%	87%	84%	84%			
Clarksdale PS Grades K-6	ENG	583	8	767	176	194	179	169	174	175	174	176	177	180	182
	FI				261	222	231	221	209	204	205	210	212	220	226
	Total				437	416	410	390	383	379	379	386	389	400	408
	Available Pupil Places				146	167	173	193	200	204	204	197	194	183	175
	Percent Utilization	75%	71%	70%	67%	66%	65%	65%	66%	67%	69%	70%			

School	Program	OTG	Port	Total	2016	2017	2018	2019	2020	2021	2022	2023	2024	2025	2026
Dr. Charles Best PS Grades K-5	ENG	297	11	550	257	253	244	228	236	233	234	233	231	233	236
	EXTF				77	78	71	73	82	70	65	71	70	68	63
	SC-SPED				6	6	6	6	6	6	6	6	6	6	
	Total	340	399	461	469	476	463	453	472	471	463	450			
Available / Shortage of Pupil Places	40	44	53	69	61	64	63	64	66	64	61				
Percent Utilization	87%	85%	82%	77%	79%	78%	79%	78%	78%	78%	79%				
Sir E. MacMillan PS Grades K-8, EXTF 7 & 8	ENG	415	6	553	257	315	384	390	388	387	382	395	395	389	381
	EXTF				77	78	71	73	82	70	65	71	70	68	63
	SC-SPED				6	6	6	6	6	6	6	6	6	6	
	Total				340	399	461	469	476	463	453	472	471	463	450
	Available / Shortage of Pupil Places	75	16	-46	-54	-61	-48	-38	-57	-56	-48	-35			
Percent Utilization	82%	96%	111%	113%	115%	112%	109%	114%	113%	112%	108%				
Rolling Meadows PS Grades K-8, FI 7 & 8	ENG	584	12	860	379	370	349	366	372	358	354	356	356	350	343
	FI				92	112	105	127	134	117	117	119	121	117	110
	SC-SPED				11	11	11	11	11	11	11	11	11	11	
	Total				482	493	465	504	517	486	482	486	488	478	464
	Available / Shortage of Pupil Places	102	91	119	80	67	98	102	98	96	106	120			
Percent Utilization	83%	84%	80%	86%	89%	83%	83%	83%	84%	82%	79%				
Study Total		2831	41	3774	2930	2927	2888	2832	2808	2698	2654	2660	2680	2641	2631



Rational: Students are directed to the community of schools south of the Dundas Triangle. English students are directed to a junior and senior elementary school, FI students directed to the corresponding FI schools.

Issues

Dr. Charles Best PS to reach OTG capacity by 2018 . 2 portables will be required.
 Limited space at the smaller sized facilities, Sir E. MacMillan PS, Dr. Charles Best PS

Results

Charles R. Beaudoin PS: Utilization rates to stabilize near 74%

Florence Meares PS: Utilization rates to stabilize near 84%

Clarksdale PS: To receive grades 2-6 FI students from the Dundas Triangle.

Clarksdale PS: Utilization is increase to above 70%

Results con't

Dr. Charles Best PS: To receive grades K-5 English students from the Dundas Triangle.

Dr. Charles Best PS: Enrolments to increase above 115% of OTG capacity by 2023 but within total capacity.

Sir E. MacMillan PS: To receive grades 6-8 English students from the Dundas Triangle.

Sir E. MacMillan PS: Utilization expected to increase to 89% and expected to stabilize near 80%

Rolling Meadows PS: To receive grades 7 & 8 FI students from the Dundas Triangle.

Rolling Meadows PS: Minimal impacts to the FI program.

The area is directed to 4 schools and 2 different high schools.

It is recommended to align the secondary schools .

School	Program	OTG	Port	Total	2016	2017	2018	2019	2020	2021	2022	2023	2024	2025	2026
Charles R. Beaudoin PS Grades K-8	ENG	722	4	814	278	287	255	243	235	213	213	205	203	200	201
	FI				360	319	326	313	304	300	284	272	275	266	271
	SC-SPED				153	128	110	100	77	69	56	60	62	61	61
	Total				791	734	691	656	616	582	553	537	540	527	533
	Available / Shortage of Pupil Places				-69	-12	31	66	106	140	169	185	182	195	189
Percent Utilization					110%	102%	96%	91%	85%	81%	77%	74%	75%	73%	74%
Florence Meares PS Grades K-8	ENG	645	6	783	603	612	597	565	560	535	533	526	541	520	520
	SC-SPED				20	20	20	20	20	20	20	20	20	20	
	Total				623	632	617	585	580	555	553	546	561	540	540
	Available / Shortage of Pupil Places				22	13	28	60	65	90	92	99	84	105	105
	Percent Utilization					97%	98%	96%	91%	90%	86%	86%	85%	87%	84%
Clarksdale PS Grades K-6	ENG	583	8	767	176	194	179	169	174	175	174	176	177	180	182
	FI				261	222	231	221	209	204	205	210	212	220	226
	Total				437	416	410	390	383	379	379	386	389	400	408
	Available Pupil Places				146	167	173	193	200	204	204	197	194	183	175
	Percent Utilization					75%	71%	70%	67%	66%	65%	65%	66%	67%	69%

School	Program	OTG	Port	Total	2016	2017	2018	2019	2020	2021	2022	2023	2024	2025	2026
Dr Charles Best PS Grades K-5	ENG	297	11	550	257	294	336	329	342	339	340	344	344	344	345
	EXTF				77	78	71	73	82	70	65	71	70	68	63
	SC-SPED				6	6	6	6	6	6	6	6	6	6	6
	Total				340	358	369	368	370	357	347	361	358	352	341
Available / Shortage of Pupil Places					40	3	-39	-32	-45	-42	-43	-47	-47	-47	-48
Percent Utilization					87%	99%	113%	111%	115%	114%	114%	116%	116%	116%	116%
Sir E. MacMillan PS Grades K-8, EXTF 7 & 8	ENG	415	6	553	257	274	292	289	282	281	276	284	282	278	272
	EXTF				77	78	71	73	82	70	65	71	70	68	63
	SC-SPED				6	6	6	6	6	6	6	6	6	6	6
	Total				340	358	369	368	370	357	347	361	358	352	341
	Available / Shortage of Pupil Places				75	57	46	47	45	58	68	54	57	63	74
Percent Utilization					82%	86%	89%	89%	89%	86%	84%	87%	86%	85%	82%
Rolling Meadows PS Grades K-8, FI 7 & 8	ENG	584	12	860	379	370	349	366	372	358	354	356	356	350	343
	FI				92	112	105	127	134	117	117	119	121	117	110
	SC-SPED				11	11	11	11	11	11	11	11	11	11	11
	Total				482	493	465	504	517	486	482	486	488	478	464
	Available / Shortage of Pupil Places				102	91	119	80	67	98	102	98	96	106	120
Percent Utilization					83%	84%	80%	86%	89%	83%	83%	83%	84%	82%	79%
Study Total		2831	41	3774	2930	2927	2888	2832	2808	2698	2654	2660	2680	2641	2631