

Halton District School Board

Report Number: 17008

Date: January 16, 2017

FOR DECISION

TO: The Chair and Members of the Halton District School Board

FROM: Terri Blackwell, Superintendent of Education
Stuart Miller, Director of Education

RE: **Redirection of Elementary and Secondary Students in Alton West
(510-03/03 subdivision)**

Warrant:

At the November 2, 2016 Board meeting, Trustees approved the resolution directing the Director to undertake a boundary review for the area bounded by Dundas Street to the south, Walkers Line to the east and Highway 407 to the north and west; with an expected completion date no later than February 2017. This report provides the background information and recommended option for this boundary redirection.

RECOMMENDATION:

Be it resolved that the Halton District School Board adjust the elementary and secondary school boundaries for the area bounded by Dundas Street to the south, Walkers Line to the east and Highway 407 to the north and west; whereby, effective immediately, elementary students are directed to attend:

- ***Clarksdale Public School for Kindergarten to Grade 6 and Rolling Meadows Public School for Grade 7 and 8 for English programming; and***
- ***Clarksdale Public School for Grade 2 to 6 and Rolling Meadows Public School for Grade 7 and 8 for French Immersion programming.***

Furthermore, that secondary students be redirected to to MM Robinson High School for Grade 9 to 12 English and French Immersion programming, effective immediately.

Background:

The Ontario Municipal Board approved the Alton West subdivision plan in December 2011. Florence Meares Public School, Charles R. Beaudoin Public School and Dr. Frank J. Hayden Secondary School are currently the K-Grade 8 English elementary program, Grade 2-8 French Immersion elementary program, and the Grade 9-12 secondary schools respectively, designated for this area. Given the location of this subdivision, elementary students would have been bused to the designated elementary schools.

Dr. Frank J. Hayden Secondary School is experiencing accommodation pressures. As stated in the 2015-2016 Long Term Accommodation Plan (LTAP), Dr. Frank J. Hayden Secondary School will continue to grow in enrolment. With a current utilization rate of 130%, the On The Ground (OTG) building and portable capacity has been exceeded. As of September 2016, there are a maximum 12 portables on site. Any additional portables placed on site will require site plan approval from the City of Burlington.

It should be noted that the Board and City received a number of concerns and objections on the placement of the additional six portables this September (from 6 to 12 portables).

Halton District School Board

It is expected moving forward with the placement of additional portables beyond these 12 will result in additional concerns expressed by the neighbours, and potentially the City of Burlington. Existing projections indicate the enrolment at the school will continue to increase to the point that Dr. Frank J Hayden Secondary School will be at 153% utilization by 2021.

As per the HDSB Boundary Review Administrative Procedure, Board staff concluded it is prudent to redirect an area that is currently being developed for residential purposes, that is within the Dr. Frank Hayden Secondary School catchment area. Therefore, the students from this new area should not be redirected to elementary schools that would feed into the high school, in order to avoid splitting the Grade 8 cohort moving forward.

Discussion:

A Boundary Review Steering Committee (BRSC) was established to lead the school boundary review process. This committee consists of Family of Schools Superintendent (Terri Blackwell), Family of Schools Superintendent (Rob Eatough), General Manager of Planning (Domenico Renzella), Senior Planner (Michelle D'Aguiar), the Trustee for the affected area (Andréa Grebenc), and a Trustee from outside the affected area (Tracey Ehl Harrison).

The BRSC reviewed school enrolments, school capacities and school programs identified in the 2016 Long Term Accommodation Plan (LTAP). The committee's focus was to identify elementary schools within Burlington ERA 105 and/or ERA 106 that would allow cohorts to remain together in their secondary school, while redirecting students from Dr. Frank J. Hayden Secondary School to reduce accommodation pressures. Based on the review of the LTAP, the options available were M.M. Robinson High School and Lester B. Pearson High School, as well as their feeder schools (English and French Immersion).

Transportation eligibility was also discussed, and it was confirmed by Halton Student Transportation Services (HSTS) that the area in question would be eligible for transportation to any elementary school due to the traffic hazard of crossing Dundas Street. As well, it was confirmed secondary students who would potentially attend M.M. Robinson High School or Lester B. Pearson High School would be eligible for transportation due to distance (beyond 3.2 km as per Board Policy).

The BRSC determined a Boundary Review Committee was not required, given there are no current students or families residing in the new growth area that would be impacted. As per the HDSB Boundary Review Administrative Procedure, Consultation Process Pathway #2 was used to inform the public for the rationale previously mentioned (i.e., the area is unoccupied). As a result, the intention of the BRSC was to inform the community of the recommended option(s).

In terms of informing the community, the BRSC informed the school councils in Burlington ERA 105 and ERA 106. Information was also provided via the Board website under [Alton West 510-03/03 Subdivision Boundary Review](#) including: [Update #1](#), [Update #2](#), a [Frequently Asked Questions](#) section and an email address was provided (i.e., plan@hdsb.ca) to ask questions and receive responses to questions throughout the process. At the time of this report, no questions have been received from the public.

Halton District School Board

Meetings were held through November and December 2016 to generate and examine a variety of boundary options (refer to [Appendices](#)). The first meeting was an orientation meeting to review the role of the BRSC and present options for further examination by the committee. Following this meeting, Board staff generated two further options at the elementary level (i.e., option #7 and #8), resulting in an additional secondary option.

The BRSC met to prioritize and review decision making criteria, analyze proposed options and further explore data (e.g., transportation, physical space, enrolment), and address questions (e.g., access Board staff as required). The prioritized criteria includes (but is not limited to):

- Balance of overall enrolment in each school in the review area to maximize student access to programs, resources, and extra-curricular opportunities,
 - Viable numbers in a dual track school to support both English and French programs,
 - Proximity to schools (walking distances, safe school routes, natural boundaries),
 - Stable, long-term boundaries,
 - Fiscal responsibilities, and
 - Keeping cohorts together.

Each option was examined, with respect to strengths and areas of concern, as per the criteria established by the BRSC.

Through the consensus building process, five elementary options were dismissed based on the prioritized criteria (e.g., significant number of transitions for students throughout their K-12 schooling, division of cohorts). As a result of these options being dismissed, the secondary option #2 was also removed (as a result of the removal of elementary options #7 and #8).

Options #1, #5 and #6 (and their respective identified high school) were further reviewed by the BRSC in respect to the previously identified criteria.

Option #1

Students attending K - Grade 8 in English program will be redirected to Brant Hills Public School. Those in Grade 2 - Grade 8 French Immersion program will be redirected to Bruce T. Lindley Public School for Grade 2 - Grade 6 and Rolling Meadows Public School for Grade 7 & 8. Portables will be required at Brant Hills Public School. All students would attend M. M. Robinson High School for both English and French Immersion programs Grade 9 - 12.

Option #1: Elementary	English Program	French Immersion Program
Brant Hills Public School	Kindergarten-Grade 8	Kindergarten-Grade 1 (in English)
Bruce T. Lindley Public School	--	Grades 2-6
Rolling Meadows Public School	--	Grades 7-8

Option #1: Secondary	English Program	French Immersion Program
MM Robinson High School	Grades 9-12	Grades 9-12

While option #1 met some of the criteria, areas of concern included:

- a large number of transitions for students (e.g., students in French Immersion would attend Brant Hills Public School, Bruce T. Lindley Public School, Rolling Meadows Public School and M. M. Robinson High School),

Halton District School Board

- 1 to 2 portables would be required on site at Brant Hills Public School for the next 10 years, and
- fragmentation of the community (with students attending 3 different public elementary schools).

Option #5

Students attending K-Grade 8 in English program will be redirected to Rolling Meadows Public School. Those in Grade 2-8 French Immersion program will be redirected to Clarksdale Public School for Grade 2-6 and Rolling Meadows Public School for Grades 7 and 8. Portables will be required at Rolling Meadows Public School. All students would attend M. M. Robinson High School for both English and French Immersion programs Grades 9-12.

Option #5: Elementary	English Program	French Immersion Program
Rolling Meadows Public School	Kindergarten-Grade 8	Kindergarten-Grade 1 (in English)
Clarksdale Public School	--	Grades 2-6
Rolling Meadows Public School	--	Grades 7-8

Option #5: Secondary	English Program	French Immersion Program
MM Robinson High School	Grades 9-12	Grades 9-12

While option #5 met some of the criteria, areas of concern included:

- a large number of transitions for students (e.g., students in French Immersion program would attend Rolling Meadows Public School, Clarksdale Public School, return to Rolling Meadows Public School and then attend M.M. Robinson High School),
- 2- 3 portables would be required on site at Rolling Meadows Public School for the next 10 years,
- within ERA 105, overall enrolment would remain unbalanced, and
- fragmentation of the community (with students attending 3 different public elementary schools).

Option #6

Students attending K-Grade 8 in English track program will be redirected to Clarksdale Public School for K-Grade 6 and Rolling Meadows Public School for Grade 7 and 8. Those in Grade 2-8 French Immersion will be redirected to Clarksdale Public School for Grade 2-6 and Rolling Meadows Public School for Grade 7 & 8. Portables are not required. All students would attend M.M. Robinson High School for English and French Immersion programs Grade 9-12.

Option #6: Elementary	English Program	French Immersion Program
Clarksdale Public School	Kindergarten-Grade 6	Kindergarten-Grade 2 (in English)
Clarksdale Public School	Kindergarten-Grade 6	Grades 2-6
Rolling Meadows Public School	Grades 7 and 8	Grades 7 and 8

Option #6: Secondary	English Program	French Immersion Program
MM Robinson High School	Grades 9-12	Grades 9-12

Halton District School Board

Conclusion:

The BRSC carefully studied the three options and recommended Option 6 to the Director as the option that best met the criteria.

This option allows the anticipated students generated from new housing development in the Alton West subdivision to attend the same schools, regardless of their program (i.e., English or French Immersion), provide balanced enrolment in the area, does not require the placement of portables on respective school sites, maintains stable and long-term boundaries, minimizes the number of transitions for students and keeps cohorts and families together.

We believe having all students from this area within the same school(s), regardless of program, will support an ongoing sense of community within the subdivision. It should be noted that prior to the opening of Alton Village Public School, some of students in the Alton community attended Clarksdale and Rolling Meadows. This historical welcoming of a similar community, with respect to location, supports this recommended option.

As house closings will occur during the summer of 2017, the number of students being generated will require this boundary redirection for September 1, 2017.

The timing of this decision, for redirection of secondary students, will allow for the inclusion of this information in the Burlington Secondary School Program and Accommodation Review process (expected to be brought to the Board for decision May/June 2017).

Board staff will continue to monitor enrolment projections and accommodation pressures in North Burlington through the annual review of the Long Term Accommodation Plan.

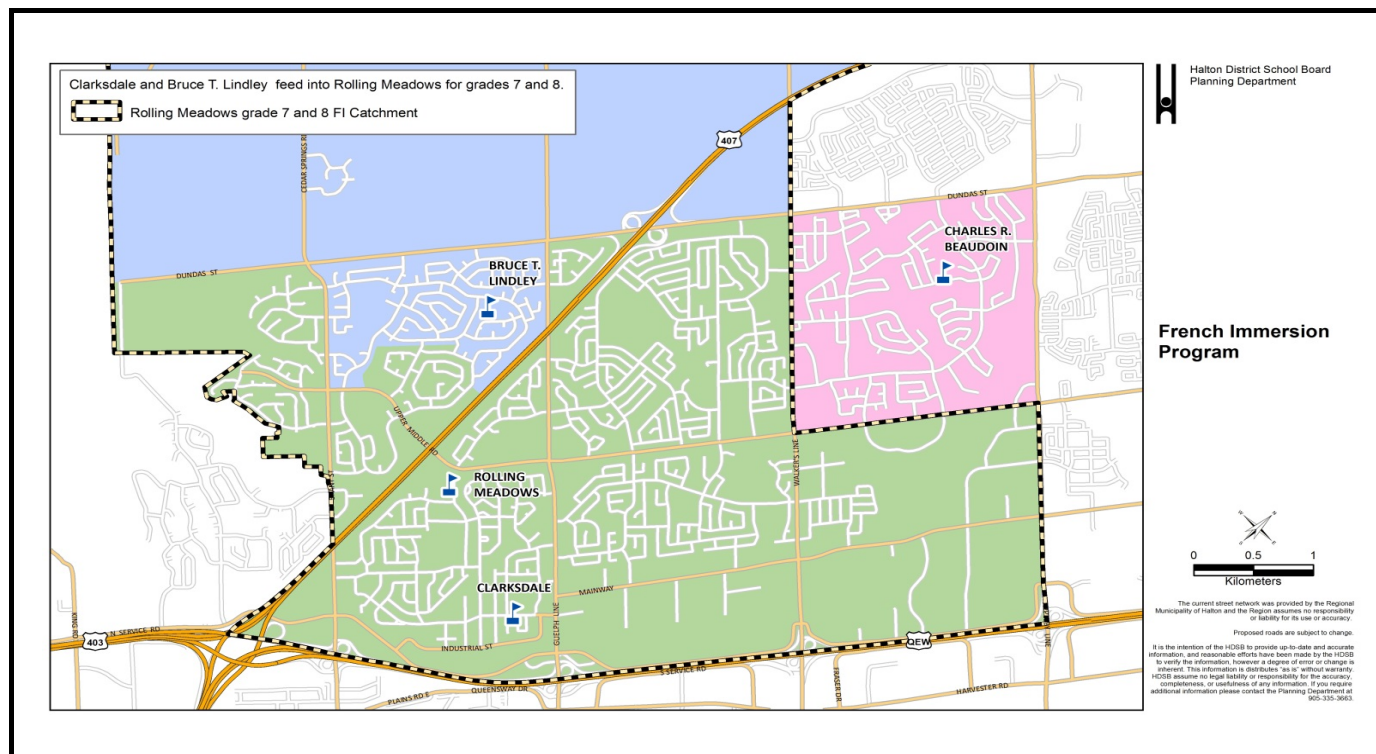
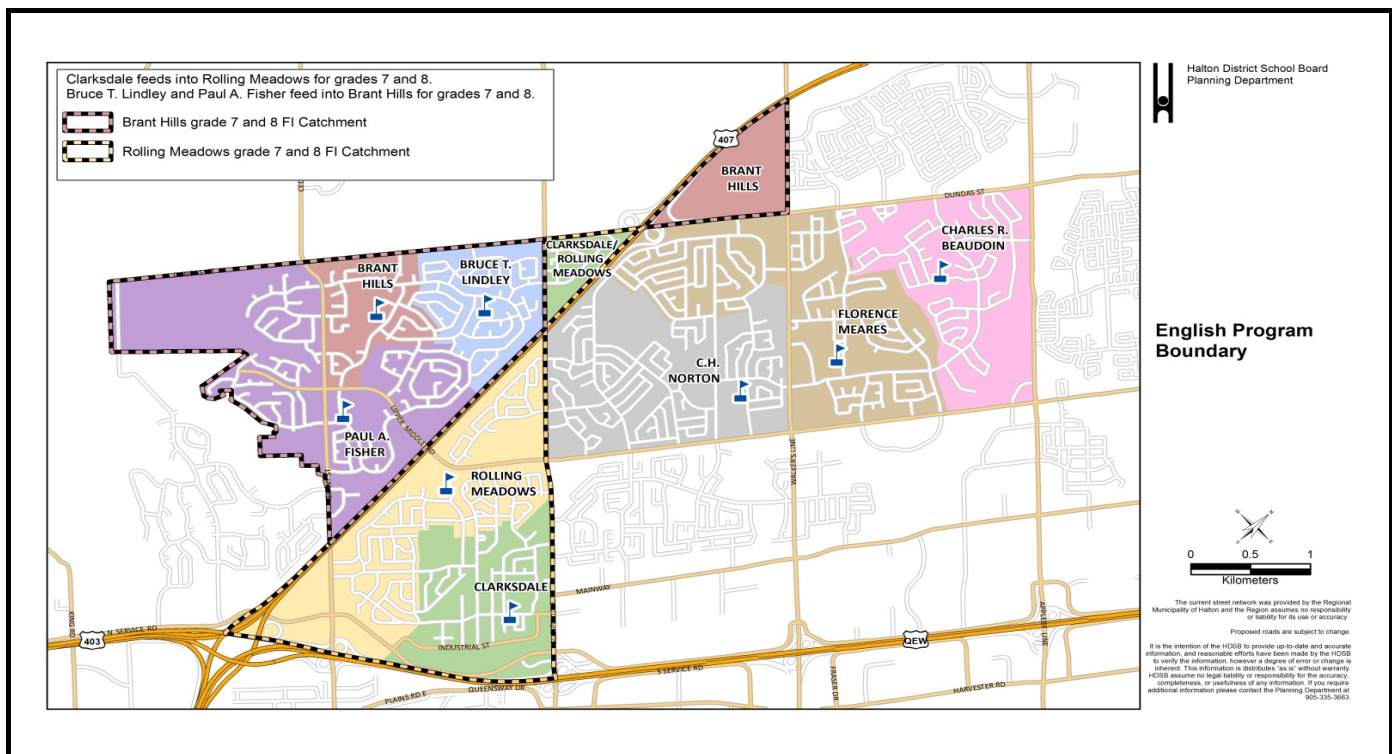
Respectfully submitted,

*Terri Blackwell
Superintendent of Education*

*Stuart Miller
Director of Education*

Scenario 1 - Redirection to Brant Hills PS, Bruce T Lindley PS and Rolling Meadows PS

14-Dec-16



Rational: Students are directed to the community of schools west of the Dundas Triangle. English students are directed to a K-8 school, FI students directed to the corresponding FI schools.

Issues

Brant Hills PS will reach OTG capacity in 2019. 1-2 Portables will be required.
Limited space at the smaller sized facilities **Brant Hills PS** and **Bruce T. Lindley PS**.

Results

Charles R. Beaudoin PS: Utilizations rates to stabilize near 74%

Florence Meares PS: Utilizations rates to stabilize near 84%

Brant Hills PS: To receive English students, grades K - 8, from the Dundas Triangle.

Results can't

Brant Hills PS: Increase utilization rates to above 100% but within total capacity.

Bruce T. Lindley PS: To receive grades 2-6 FI students from the Dundas Triangle.

Bruce T. Lindley PS: To increase utilization rates to 89%

Paul A. Fisher PS: No impact to school boundaries.

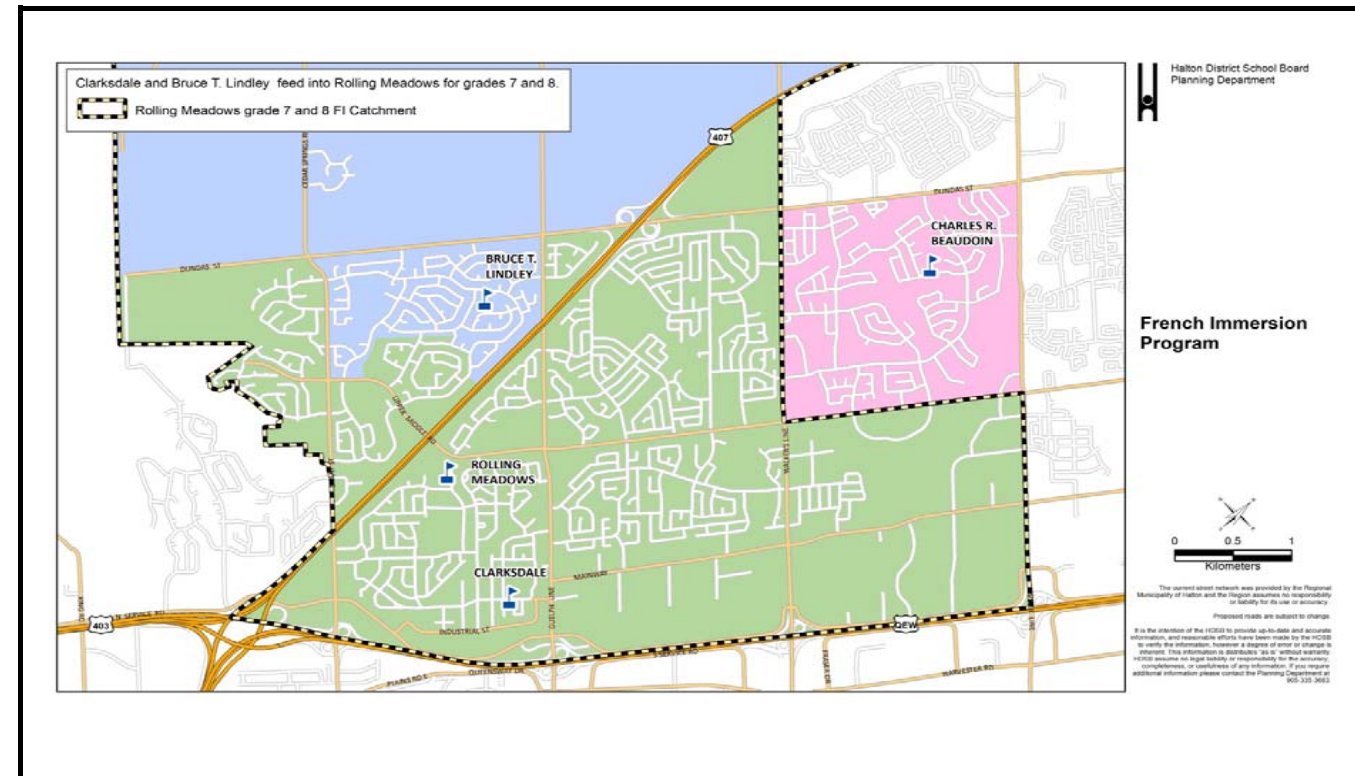
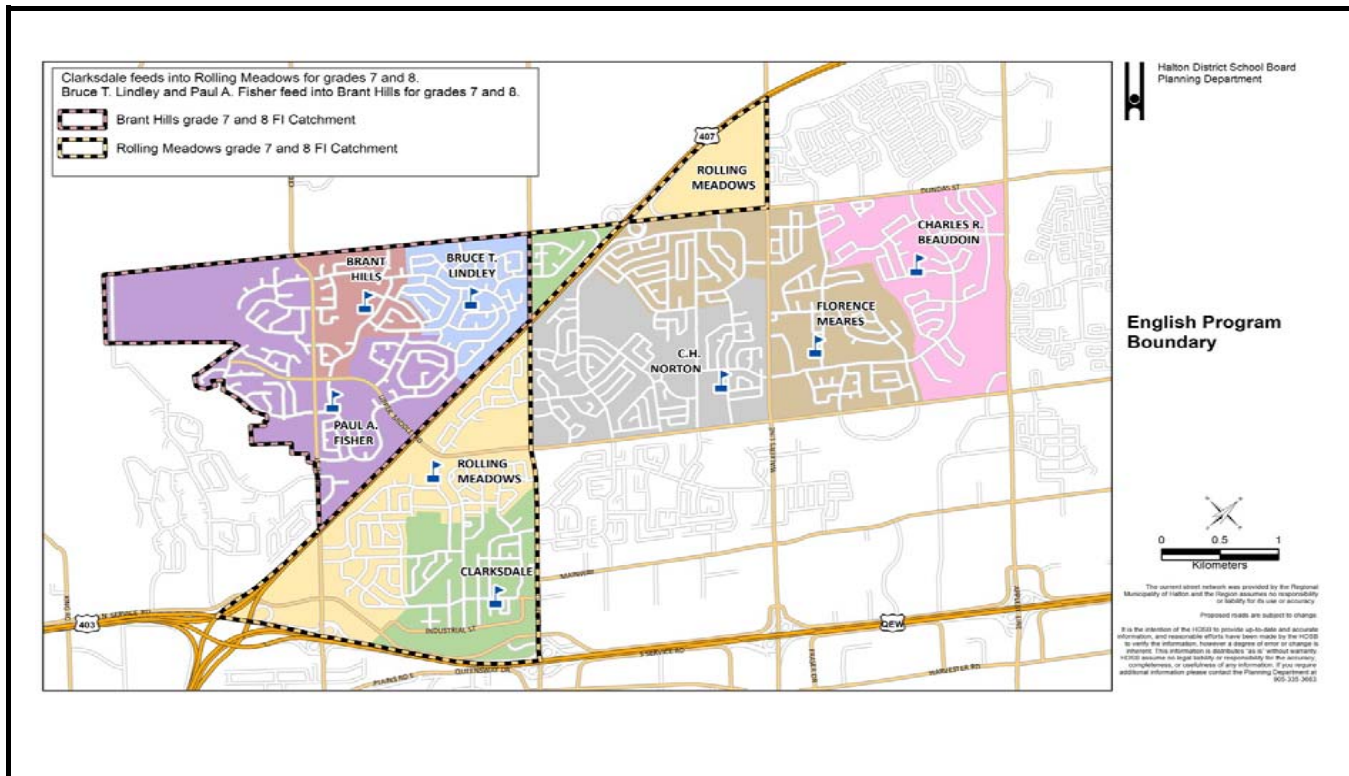
Rolling Meadows PS: To receive grades 7 & 8 FI students from the Dundas Triangle.

Rolling Meadows PS: Minimal impacts.

Students are directed to 3 schools.
It is recommended to align the secondary schools.

School	Program	OTG	Port	Total	2016	2017	2018	2019	2020	2021	2022	2023	2024	2025	2026
Charles R. Beaudoin PS Grades K-8	ENG	722	4	814	278	287	255	243	235	213	213	205	203	200	201
	FI				360	319	326	313	304	300	284	272	275	266	271
	SC-SPED				153	128	110	100	77	69	56	60	62	61	61
	Total				791	734	691	656	616	582	553	537	540	527	533
	Available / Shortage of Pupil Places				-69	-12	31	66	106	140	169	185	182	195	189
Percent Utilization					110%	102%	96%	91%	85%	81%	77%	74%	75%	73%	74%
Florence Meares PS Grades K-8	ENG	645	6	783	603	612	597	565	560	535	533	526	541	520	520
	SC-SPED				20	20	20	20	20	20	20	20	20	20	
	Total				623	632	617	585	580	553	546	561	540	540	
	Available / Shortage of Pupil Places				22	13	28	60	65	90	92	99	84	105	105
	Percent Utilization					97%	98%	96%	91%	90%	86%	86%	85%	87%	84%
Brant Hills PS Gr. K-8	ENG	420	6	558	270	344	401	417	420	416	427	442	440	430	425
	SC-SPED				4	4	4	4	4	4	4	4	4	4	
	Total				274	348	405	421	424	420	431	446	444	434	429
	Available / Shortage of Pupil Places				146	72	15	-1	-4	0	-11	-26	-24	-14	-9
	Percent Utilization					65%	83%	96%	100%	101%	100%	103%	106%	106%	103%

School	Program	OTG	Port	Total	2016	2017	2018	2019	2020	2021	2022	2023	2024	2025	2026
Bruce T Lindley PS Grades K-6	ENG	354	10	584	168	198	185	172	168	170	178	174	174	172	173
	FI				154	129	145	139	151	146	141	139	140	137	141
	Total				322	327	330	311	319	316	319	314	309	314	
	Available Pupil Places				32	27	24	43	35	38	35	41	40	45	40
	Percent Utilization					91%	92%	93%	88%	90%	89%	90%	88%	89%	87%
Paul A. Fisher PS Gr. K-6	ENG	305	12	581	190	177	176	171	174	178	171	173	171	176	172
	SC-SPED				0	0	0	0	0	0	0	0	0		
	Total				190	177	176	171	174	178	171	173	171	176	172
	Available Pupil Places				115	128	129	134	131	127	134	132	134	129	133
	Percent Utilization					62%	58%	58%	56%	57%	58%	56%	57%	56%	58%
Rolling Meadows PS Grades K-8, FI 7 & 8	ENG	584	12	860	379	370	349	366	372	358	354	356	356	350	343
	FI				92	112	105	127	134	117	117	119	121	117	110
	SC-SPED				11	11	11	11	11	11	11	11	11	11	
	Total				482	493	465	504	517	486	482	486	488	478	464
	Available Pupil Places				102	91	119	80	67	98	102	98	96	106	120
Percent Utilization					83%	84%	80%	86%	89%	83%	83%	84%	82%	79%	
Study Total		3030	50	4180	2682	2711	2684	2648	2630	2537	2509	2501	2518	2464	2452



Rational: Students are directed to the community of schools south of the Dundas Triangle. English students are directed to the a K-8 school, FI students directed to the corresponding FI schools.

Issues

Rolling Meadows PS will reach OTG capacity in 2018. 2-3 portables will be required,

Results

Charles R. Beaudoin PS: Utilizations rates to stabilize near 74%

Florence Meares PS: Utilization rates to stabilize near 84%

C. H. Norton PS: No impact to school boundaries.

Results con't

Clarksdale PS: To receive grades 2-6 FI students from the Dundas Triangle.

Clarksdale PS: Utilization rates to increase to above 70%

Rolling Meadows PS: To receive grades K-8 English students from the Dundas Triangle.

Rolling Meadows PS: To receive grades 7 & 8 FI students from the Dundas Triangle.

Rolling Meadows PS: Utilization rates to stabilize near 106% of OTG but remain with total capacity.

Rolling Meadows PS: Minimal impacts to the FI program.

Students are directed to 2 schools.

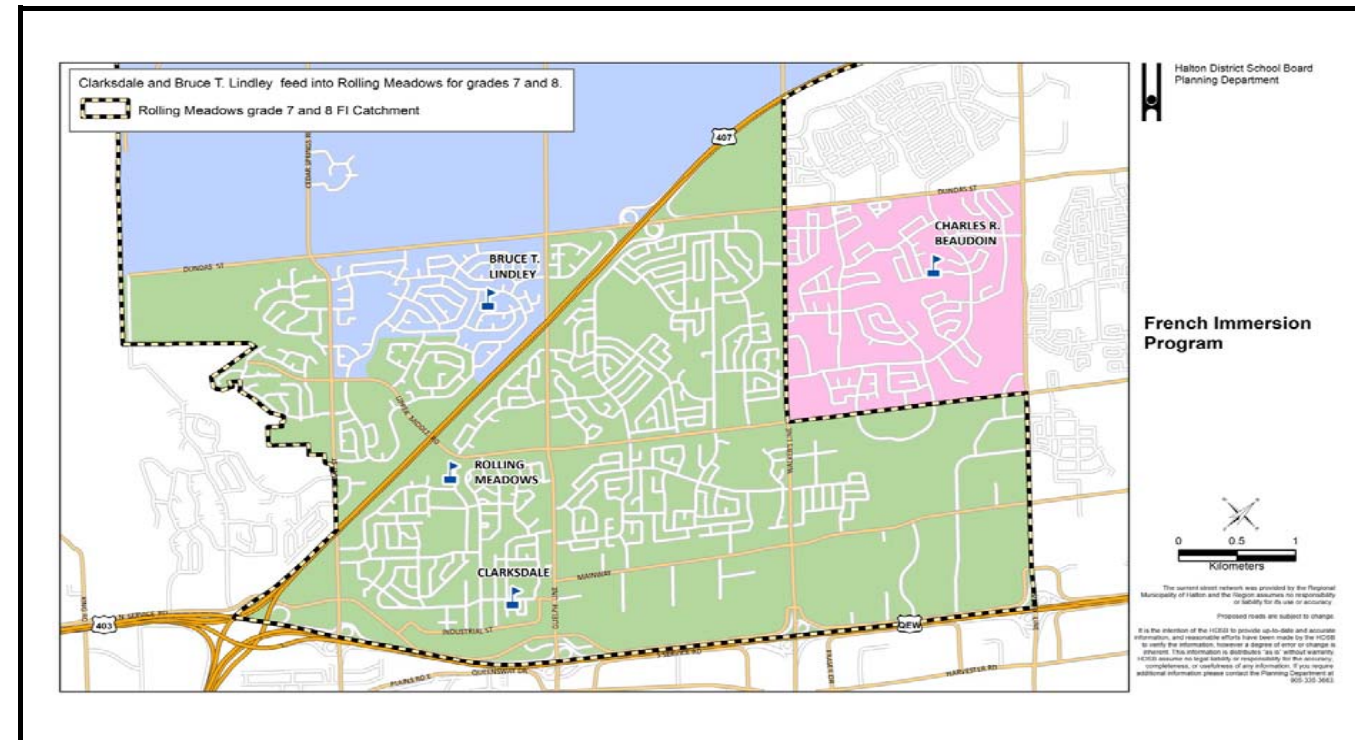
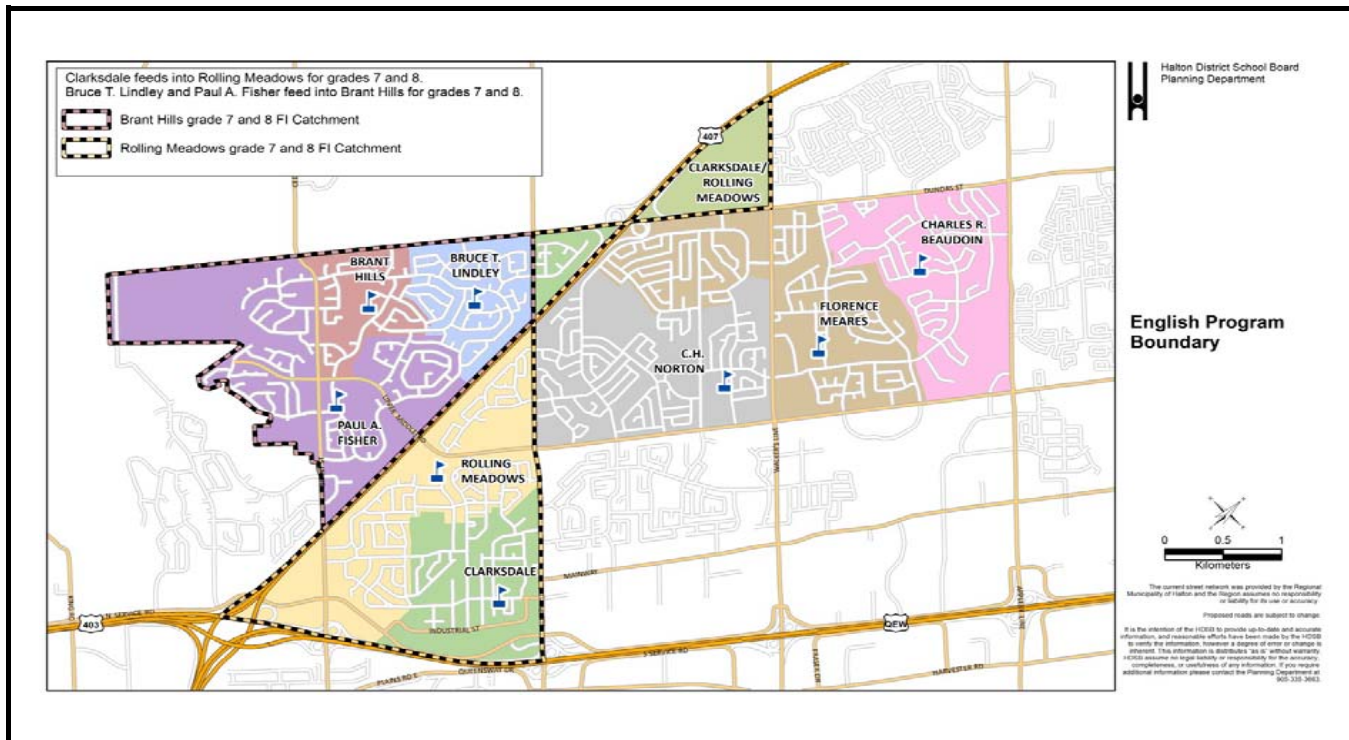
It is recommended to align the secondary schools .

School	Program	OTG	Port	Total	2016	2017	2018	2019	2020	2021	2022	2023	2024	2025	2026
Charles R. Beaudoin PS Grades K-8	ENG	722	4	814	278	287	255	243	235	213	213	205	203	200	201
	FI				360	319	326	313	304	300	284	272	275	266	271
	SC-SPED				153	128	110	100	77	69	56	60	62	61	61
	Total				791	734	691	656	616	582	553	537	540	527	533
	Available / Shortage of Pupil Places	-69	-12	31	66	106	140	169	185	182	195	189			
Percent Utilization	110%	102%	96%	91%	85%	81%	77%	74%	75%	73%	74%				
Florence Meares PS Grades K-8	ENG	645	6	783	603	612	597	565	560	535	533	526	541	520	520
	SC-SPED				20	20	20	20	20	20	20	20	20	20	
	Total				623	632	617	585	580	555	553	546	561	540	540
	Available / Shortage of Pupil Places				22	13	28	60	65	90	92	99	84	105	105
	Percent Utilization	97%	98%	96%	91%	90%	86%	86%	85%	87%	84%	84%			
CH Norton PS Gr. K-8	ENG	583	8	767	485	477	485	474	482	465	463	460	457	453	452
	SC-SPED				25	25	25	25	25	25	25	25	25	25	
	Total				510	502	510	499	507	490	488	485	482	478	477
	Available Pupil Places				73	81	73	84	76	93	95	98	101	105	106
	Percent Utilization	87%	86%	87%	86%	87%	84%	84%	83%	83%	82%	82%			

School	Program	OTG	Port	Total	2016	2017	2018	2019	2020	2021	2022	2023	2024	2025	2026
Clarksdale PS Grades K-6	ENG	553	12	829	176	194	179	169	174	175	174	176	177	180	182
	FI				261	222	231	221	209	204	205	210	212	220	226
	Total				437	416	410	390	383	379	379	386	389	399	407
	Available / Shortage of Pupil Places				116	137	143	163	170	174	174	167	164	154	146
	Percent Utilization	79%	75%	74%	71%	69%	69%	69%	70%	70%	72%	74%			
Rolling Meadows PS Grades K-8, FI 7 & 8	ENG	584	12	860	379	423	468	497	508	494	490	500	502	494	482
	FI				92	112	105	127	134	117	117	119	121	117	110
	SC-SPED				11	11	11	11	11	11	11	11	11	11	11
	Total				482	545	584	634	652	621	617	629	633	621	602
	Available / Shortage of Pupil Places	102	39	0	-50	-68	-37	-33	-45	-49	-37	-18			
Percent Utilization	83%	93%	100%	109%	112%	106%	106%	108%	108%	106%	103%				
Study Total		3087	42	4053	2843	2829	2812	2764	2738	2627	2590	2583	2605	2565	2559

Option 6 - Redirection to Clarksdale PS, and Rolling Meadows PS

14-Dec-16



Rational: Students are directed to the community of schools south of the Dundas Triangle. English and FI students are directed to the same schools for the same grades.

Issues

All schools are expected to remain under OTG capacity
More students may elect to attend the FI program.

Results

Charles R. Beaudoin PS: Utilization rates to stabilize near 74%

Florence Meares PS: Utilization rates to stabilize near 84%

C. H. Norton PS: No impact to school boundaries.

Results con't

Clarksdale PS: To receive grades K-6 English students from the Dundas Triangle.

Clarksdale PS: To receive grades 2-6 FI students from the Dundas Triangle.

Clarksdale PS: Utilization is expected to increase above 90% and stabilize near 95% utilization.

Rolling Meadows PS: To receive grades 7 & 8 English students from the Dundas Triangle.

Rolling Meadows PS: To receive grades 7 & 8 FI students from the Dundas Triangle.

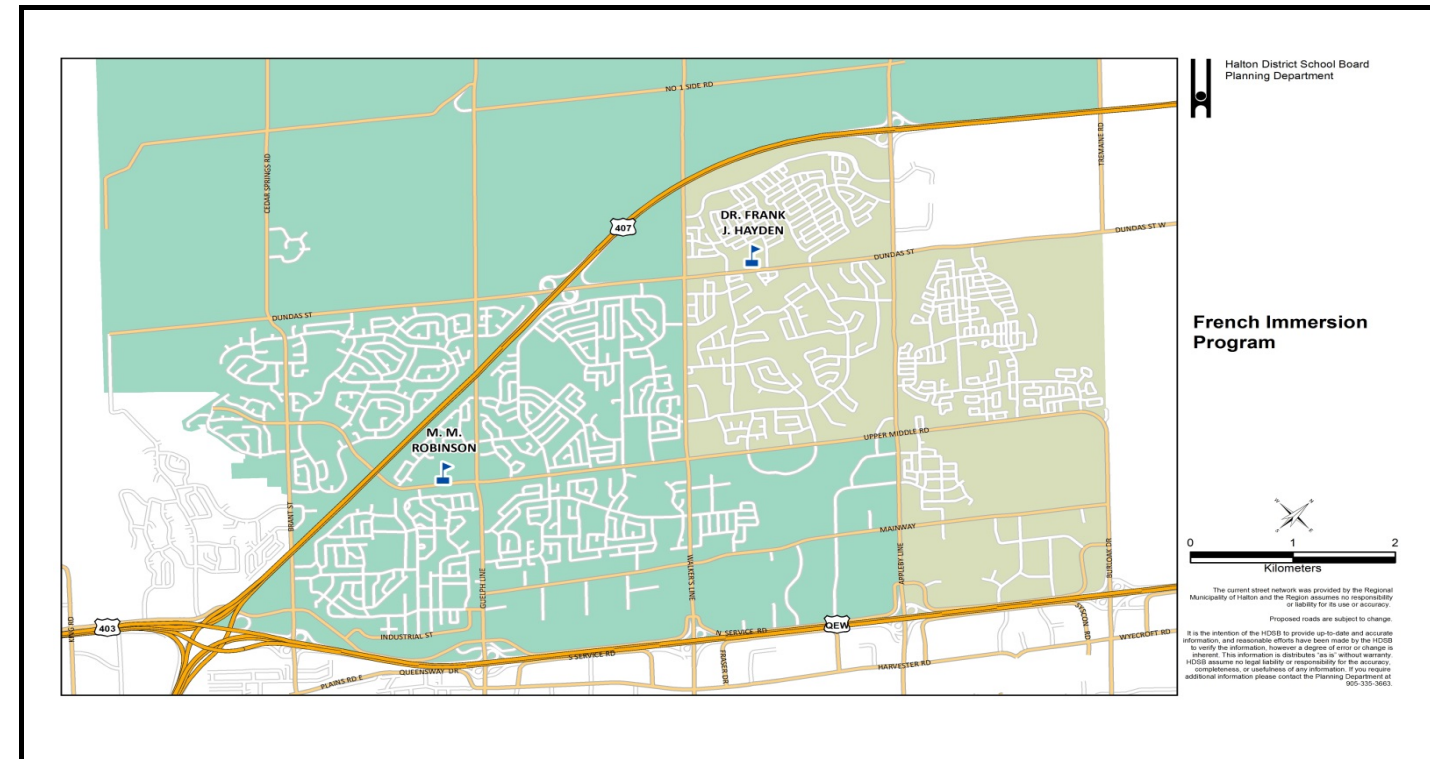
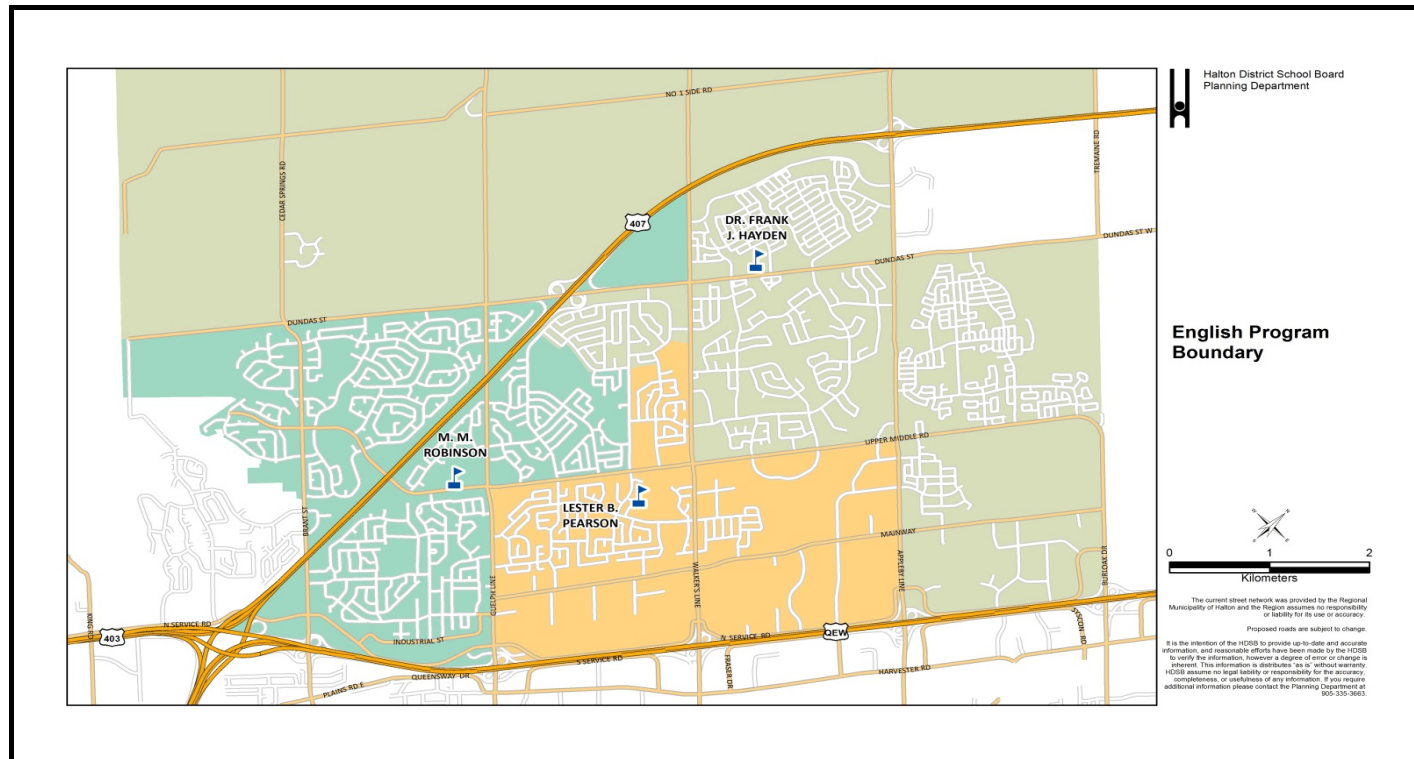
Rolling Meadows PS: Utilization rates are expected to increase and stabilize above 80% of OTG.

Community is to attend the same 2 schools regardless of program.
It is recommended to align the secondary schools .

School	Program	OTG	Port	Total	2016	2017	2018	2019	2020	2021	2022	2023	2024	2025	2026
Charles R. Beaudoin PS Grades K-8	ENG	722	4	814	278	287	255	243	235	213	213	205	203	200	201
	FI				360	319	326	313	304	300	284	272	275	266	271
	SC-SPED				153	128	110	100	77	69	56	60	62	61	61
	Total				791	734	691	656	616	582	553	537	540	527	533
	Available / Shortage of Pupil Places	-69	-12	31	66	106	140	169	185	182	195	189			
Percent Utilization	110%	102%	96%	91%	85%	81%	77%	74%	75%	73%	74%				
Florence Meares PS Grades K-8	ENG	645	6	783	603	612	597	565	560	535	533	526	541	520	520
	SC-SPED				20	20	20	20	20	20	20	20	20	20	
	Total				623	632	617	585	580	555	553	546	561	540	540
	Available / Shortage of Pupil Places				22	13	28	60	65	90	92	99	84	105	105
	Percent Utilization	97%	98%	96%	91%	90%	86%	86%	85%	87%	84%	84%			
CH Norton PS Gr. K-8	ENG	583	8	767	485	477	485	474	482	465	463	460	457	453	452
	SC-SPED				25	25	25	25	25	25	25	25	25	25	
	Total				510	502	510	499	507	490	488	485	482	478	477
	Available Pupil Places				73	81	73	84	76	93	95	98	101	105	106
	Percent Utilization	87%	86%	87%	86%	87%	84%	84%	83%	83%	82%	82%			

School	Program	OTG	Port	Total	2016	2017	2018	2019	2020	2021	2022	2023	2024	2025	2026
Clarksdale PS Grades K-6	ENG	553	12	829	176	239	280	280	290	291	290	298	301	302	301
	FI				261	222	231	221	209	204	205	210	212	220	226
	Total				437	461	511	501	499	495	508	513	521	526	
	Available / Shortage of Pupil Places				116	92	42	52	54	58	45	40	32	27	
	Percent Utilization	79%	83%	92%	91%	90%	90%	92%	93%	94%	95%				
Rolling Meadows PS Grades K-8, FI 7 & 8	ENG	584	12	860	379	378	367	386	392	378	374	378	378	372	363
	FI				92	112	105	127	134	117	117	119	121	117	110
	SC-SPED				11	11	11	11	11	11	11	11	11	11	
	Total				482	500	483	523	536	505	507	509	499	483	
	Available / Shortage of Pupil Places	102	84	101	61	48	79	83	77	75	85	101			
Percent Utilization	83%	86%	83%	90%	92%	86%	86%	87%	87%	85%	83%				
Study Total		3087	42	4053	2843	2829	2812	2764	2738	2627	2590	2583	2605	2565	2559

Option 1 - Redirection to M.M Robinson HS



Rational: Students in the Dundas Triangle are to be directed to M.M Robinson HS, which will correspond with changes to the elementary schools.

Notes
Board approved changes to FI delivery in June 2016 will result in the commencement of FI in grade 2 from 2018. Impact of these elementary changes will not be experienced at the secondary level until 2024 ..
398 units are expected in the Dundas Triangle which is north of Dundas St, west of Walker's Line and Southeast of the 407 ETR. Approximately 40 secondary students are expected from this development.
The Board is currently undergoing a Program and Accommodation Review in which staff recommend to close Lester B. Pearson HS and Burlington Central HS along with some secondary boundary changes. The review is currently in the initial stages and the final decision may impact secondary projections
Several elementary scenarios have been developed proposing English and FI to attend M.M Robinson HS feeder schools .

Issues
Dr. Frank J. Hayden SS: Remains over OTG capacity.
M.M Robinson HS: Remains underutilized.
Lester B. Pearson HS: Remains underutilized.

Results
M. M. Robinson HS: Students residing in the Dundas Triangle to be directed to M. M. Robinson HS.
M. M. Robinson HS: School is under 60% utilization. Enrolments are expected to decline to 50% utilization.
M. M. Robinson HS: Currently there is 635 available pupil places. By 2021 there will be 613 excess pupil places.
M. M. Robinson HS: This provides 6% increase in student enrolment.

School	Program	OTG	Port	Total	2016	2017	2018	2019	2020	2021	2022	2023	2024	2025	2026
M.M. Robinson HS Grades 9-12	ENG	1347	12	1599	568	546	544	526	513	526	503	485	489	480	473
	FI				112	109	128	145	147	176	175	179	183	173	175
	SC-SPED				32	32	32	32	32	32	32	32	32	32	32
	Total				712	687	704	703	692	734	710	696	704	685	680
	Available Pupil Places				635	660	643	644	655	613	637	651	643	662	667
Percent Utilization	53%	51%	52%	52%	51%	54%	53%	52%	52%	51%	50%				

Results con't

Lester B. Pearson HS: No change to current boundaries.

Dr. Frank J. Hayden SS: School will remain over OTG capacity. Enrolments are expected to peak in 2021 at 151% capacity.
Dr. Frank J. Hayden SS: Currently a shortage of 342 pupil places. By 2021 there will be a shortage of 614 pupil places.
Dr. Frank J. Hayden SS: This represents a decrease of 2% in student enrolment.

This scenario will align with proposed scenarios 1 to 6 for elementary schools.

School	Program	OTG	Port	Total	2016	2017	2018	2019	2020	2021	2022	2023	2024	2025	2026
Lester B. Pearson HS Grades 9-12	ENG	642	14	936	346	333	318	304	281	290	294	271	277	265	257
	FI				46	46	52	58	55	56	57	54	55	53	51
	Total				392	379	371	363	336	347	351	325	332	318	308
	Available Pupil Places				250	263	271	279	306	295	291	317	310	324	334
Percent Utilization					61%	59%	58%	57%	52%	54%	55%	51%	52%	50%	48%
Dr. Frank J. Hayden SS Grades 9-12	ENG	1194	12	1446	1285	1362	1386	1394	1397	1417	1380	1355	1323	1257	1211
	FI				251	274	325	349	383	391	396	399	369	367	350
	Total				1536	1636	1711	1742	1780	1808	1775	1753	1693	1625	1560
	Shortage of Pupil Places				-342	-442	-517	-548	-586	-614	-581	-559	-499	-431	-366
Percent Utilization					129%	137%	143%	146%	149%	151%	149%	147%	142%	136%	131%
Study Total		2541	24	3045	2640	2702	2786	2808	2808	2889	2836	2774	2728	2628	2548