

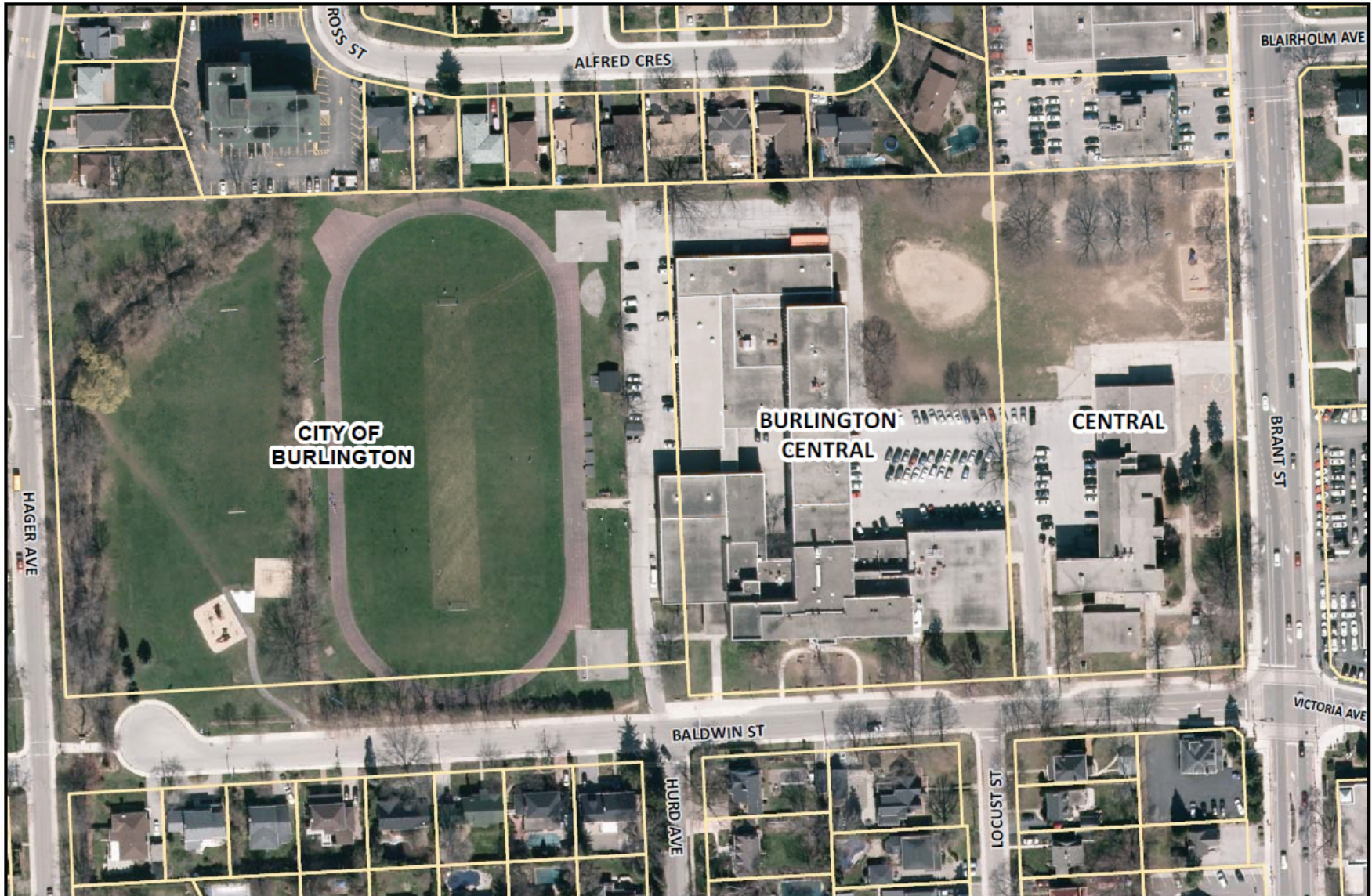
SIP 1.3.2—Aerial Photo (2013 Imagery)

Aldershot HS



SIP 1.3.2—Aerial Photo (2013 Imagery)

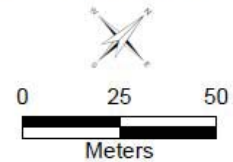
Burlington Central HS



Halton District School Board
Planning Department



Burlington Central Aerial Photo



It is the intention of the HDSB to provide up-to-date and accurate information, and reasonable efforts have been made by the HDSB to verify the information, however a degree of error or change is inherent. This information is distributed as is without warranty. HDSB assumes no legal liability or responsibility for the accuracy, completeness, or usefulness of any information. If you need additional information please contact the Planning Department at 905-335-3663.

THIS IS NOT A PLAN OF SURVEY.

2013 Air Photography

Oct. 2016

SIP 1.3.2—Aerial Photo (2013 Imagery)

Dr. Frank J. Hayden SS



Halton District School Board
Planning Department



Dr. Frank J. Hayden HS Aerial Photo

It is the intention of the HDSB to provide up-to-date and accurate information, and reasonable efforts have been made by the HDSB to verify the information, however a degree of error or change is inherent. This information is distributed as is without warranty. HDSB assume no legal liability or responsibility for the accuracy, completeness, or usefulness of any information. If you require additional information please contact the Planning Department at 905-335-3003.

THIS IS NOT A PLAN OF SURVEY.
2013 Aerial Photography Aug. 2014

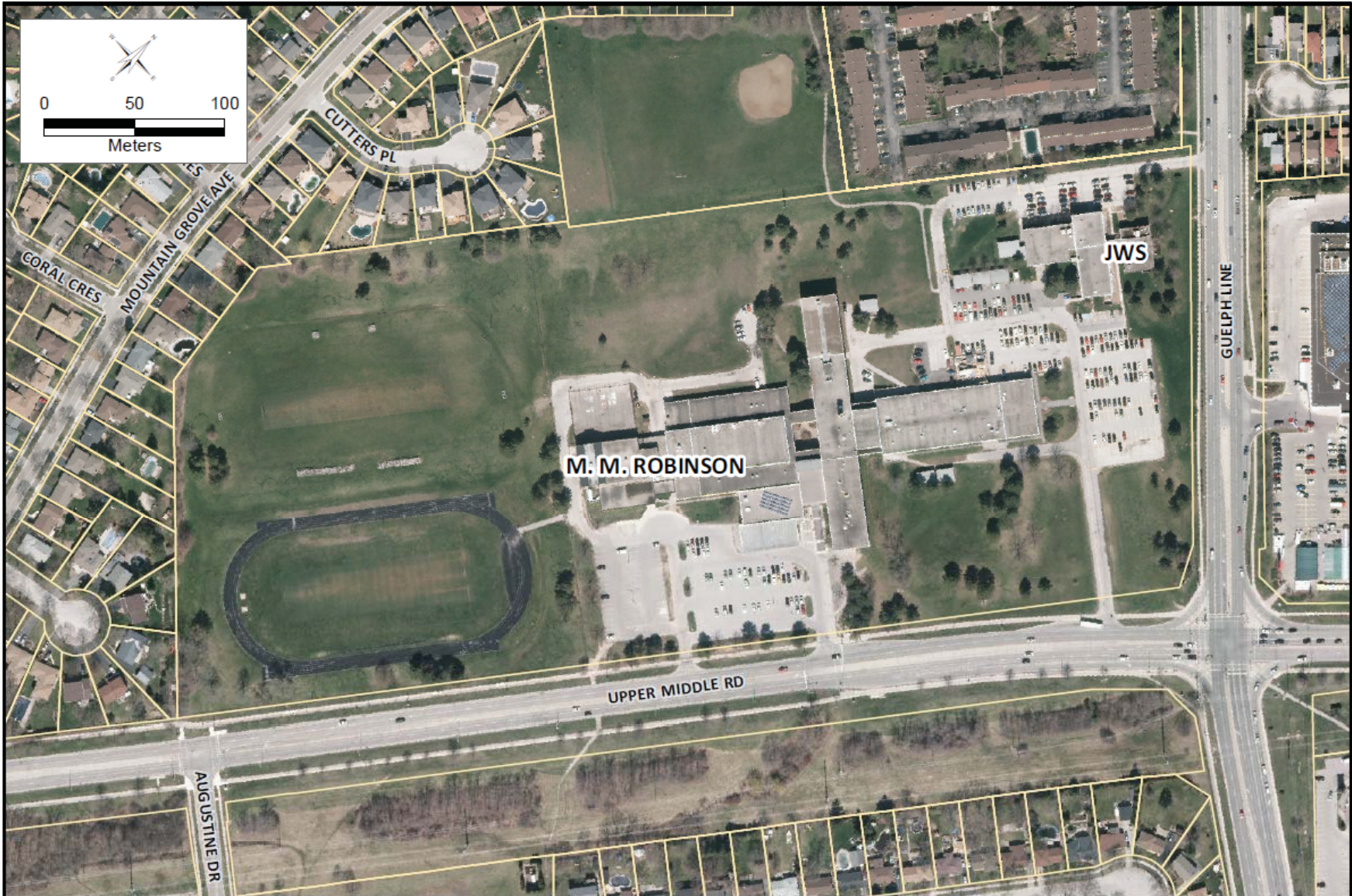
SIP 1.3.2—Aerial Photo (2013 Imagery)

Lester B. Pearson HS



SIP 1.3.2—Aerial Photo (2013 Imagery)

M.M. Robinson HS



Halton District School Board
Planning Department



M.M. Robinson HS Aerial Photo

It is the intention of the HDSB to provide up-to-date and accurate information, and reasonable efforts have been made by the HDSB to verify the information, however a degree of error or change is inherent. This information is distributed as is without warranty. HDSB assume no legal liability or responsibility for the accuracy, completeness, or usefulness of any information. If you require additional information please contact the Planning Department at 905-335-3663.

THIS IS NOT A PLAN OF SURVEY.

2013 Air Photography

Aug. 2014

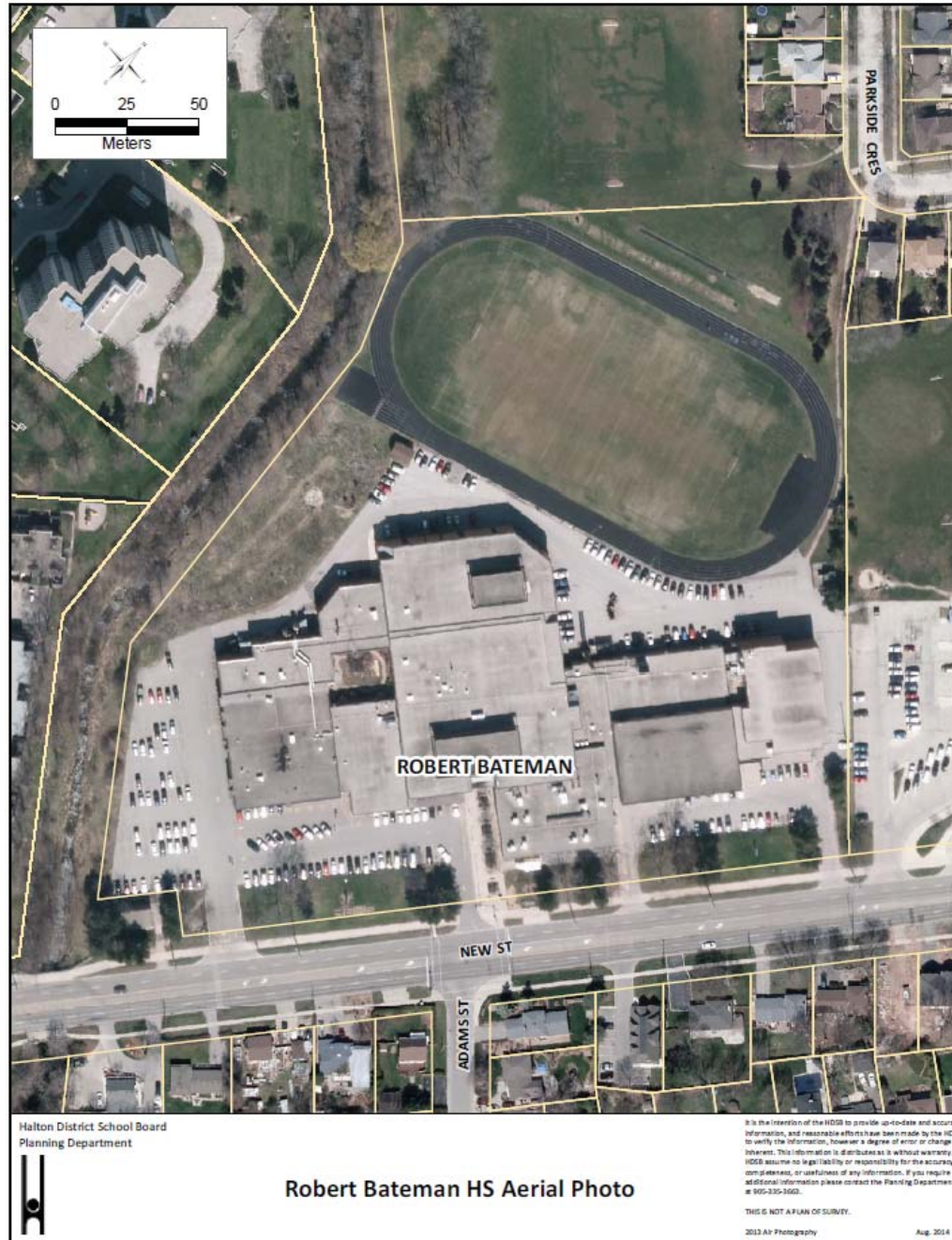
SIP 1.3.2—Aerial Photo (2013 Imagery)

Nelson HS



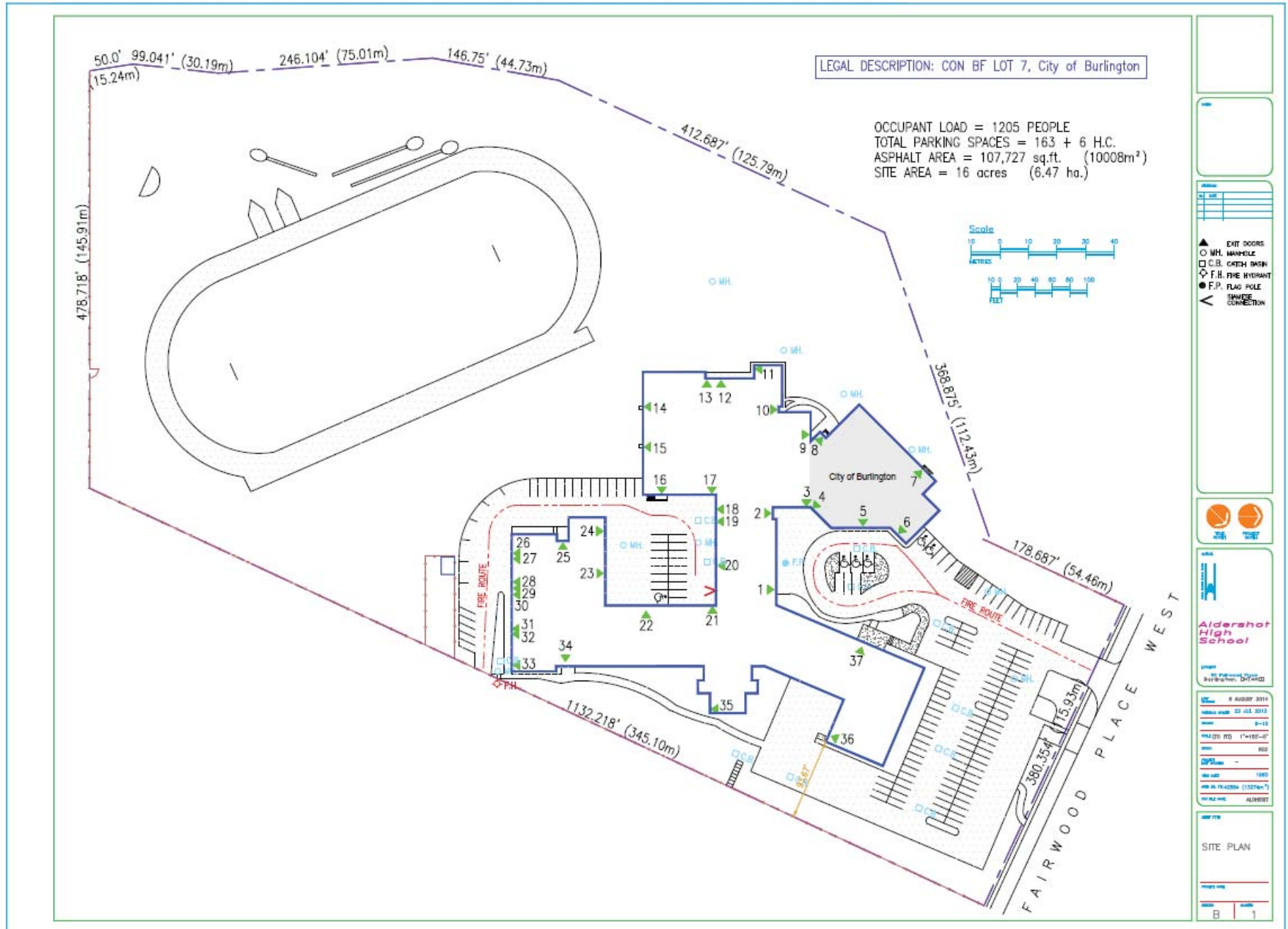
SIP 1.3.2—Aerial Photo (2013 Imagery)

Robert Bateman HS



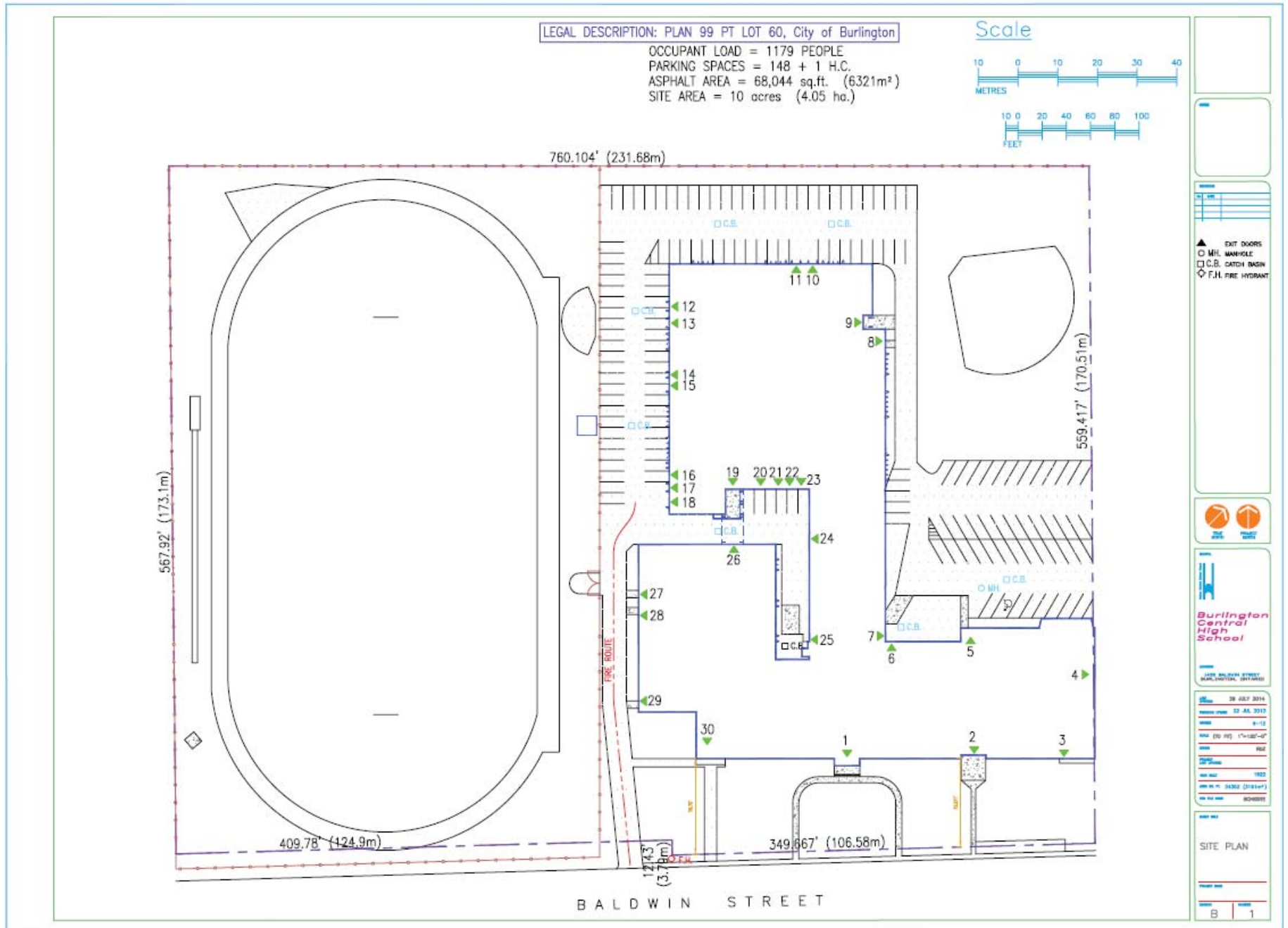
SIP 1.3.3—Site Plan

Aldershot HS



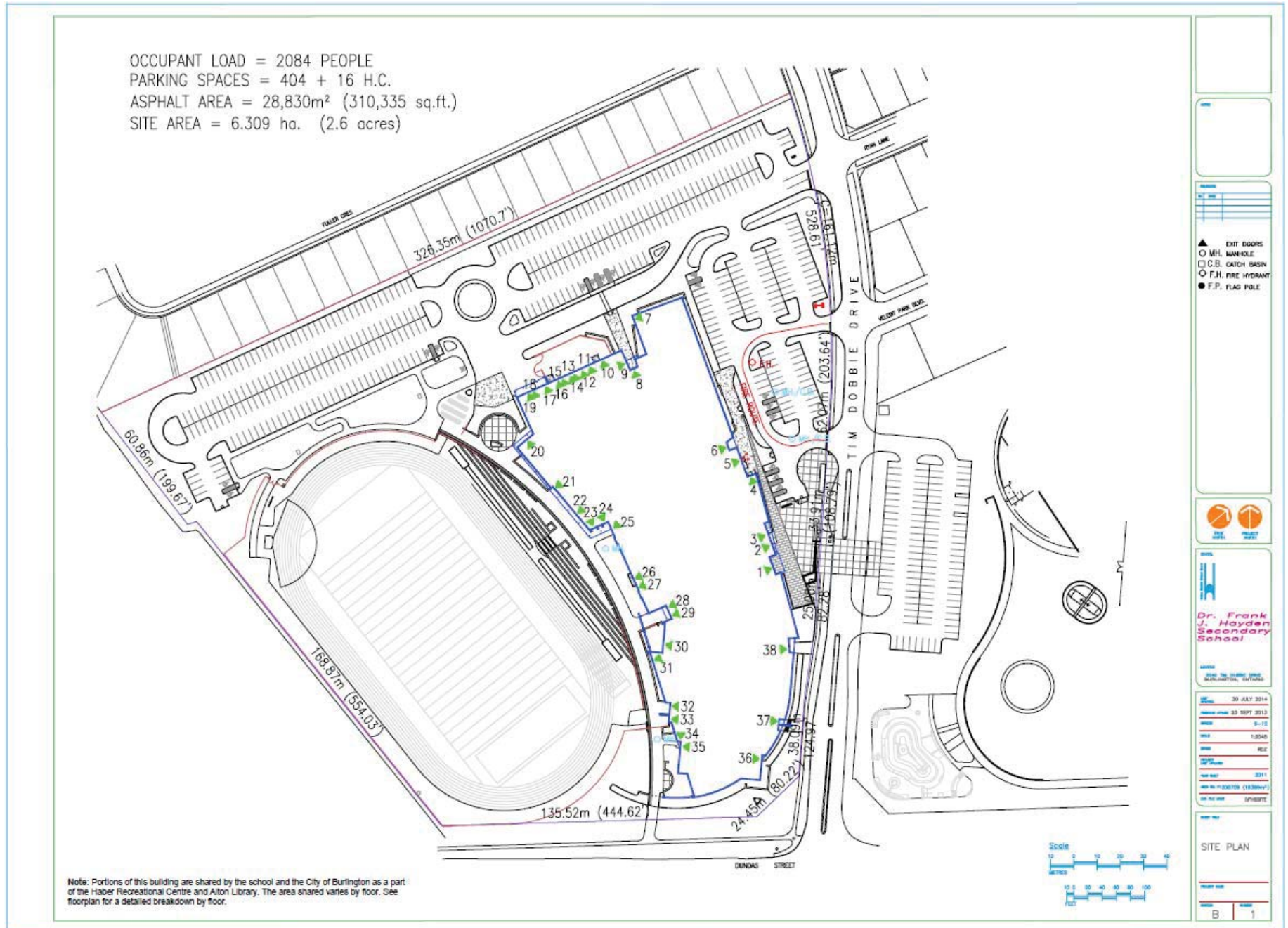
SIP 1.3.3—Site Plan

Burlington Central HS



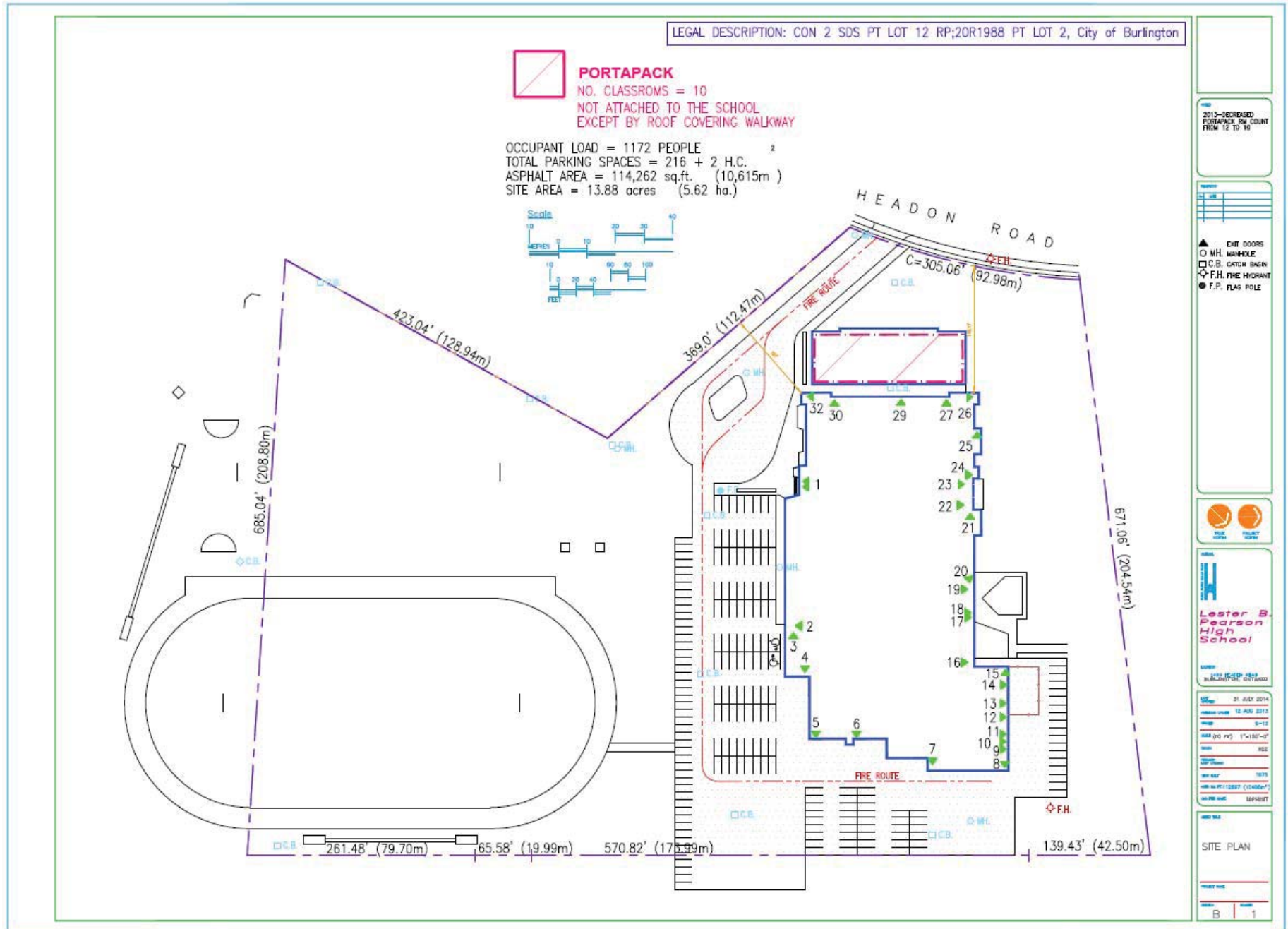
SIP 1.3.3—Site Plan

Dr. Frank J. Hayden SS



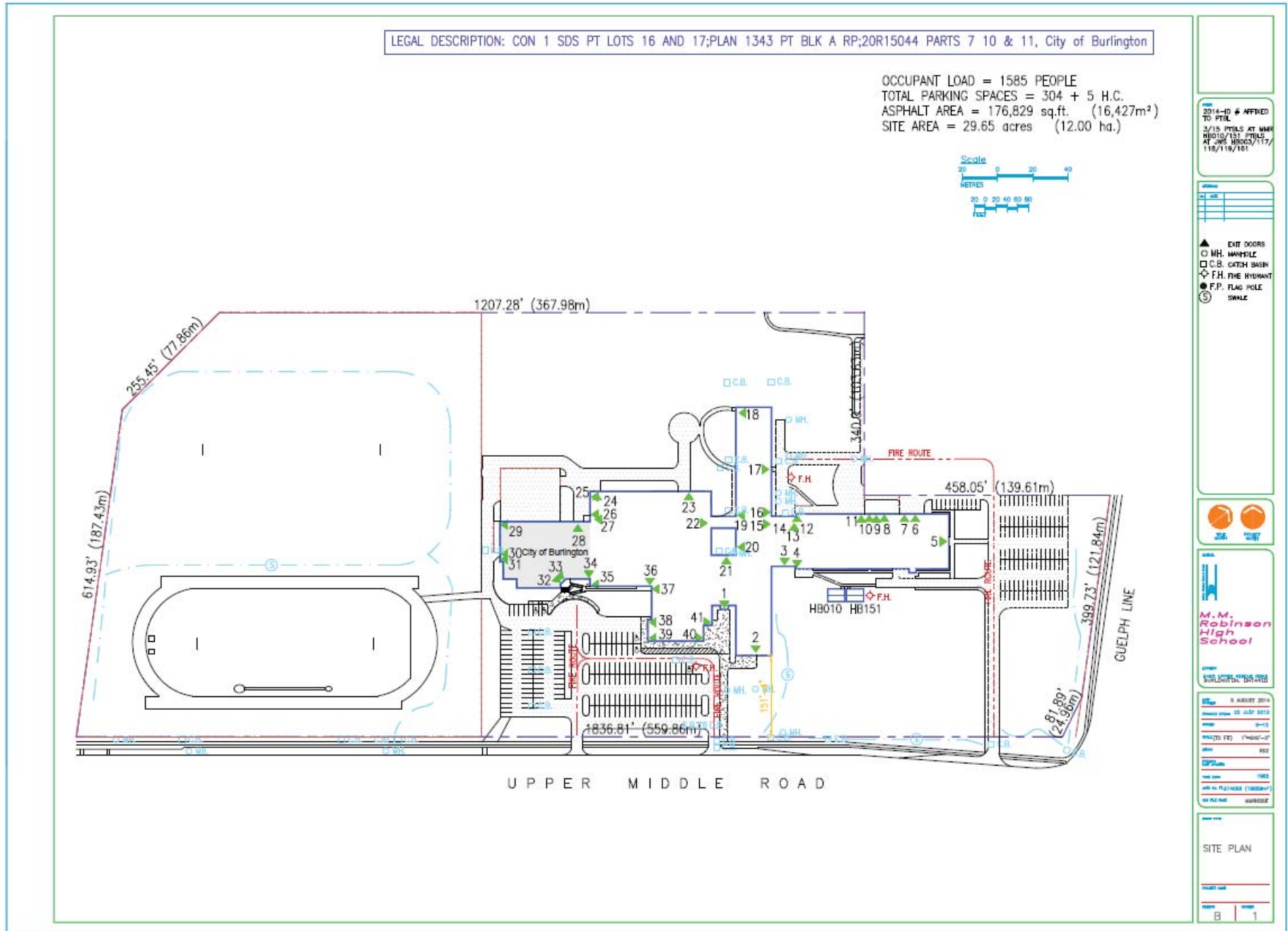
SIP 1.3.3—Site Plan

Lester B. Pearson HS



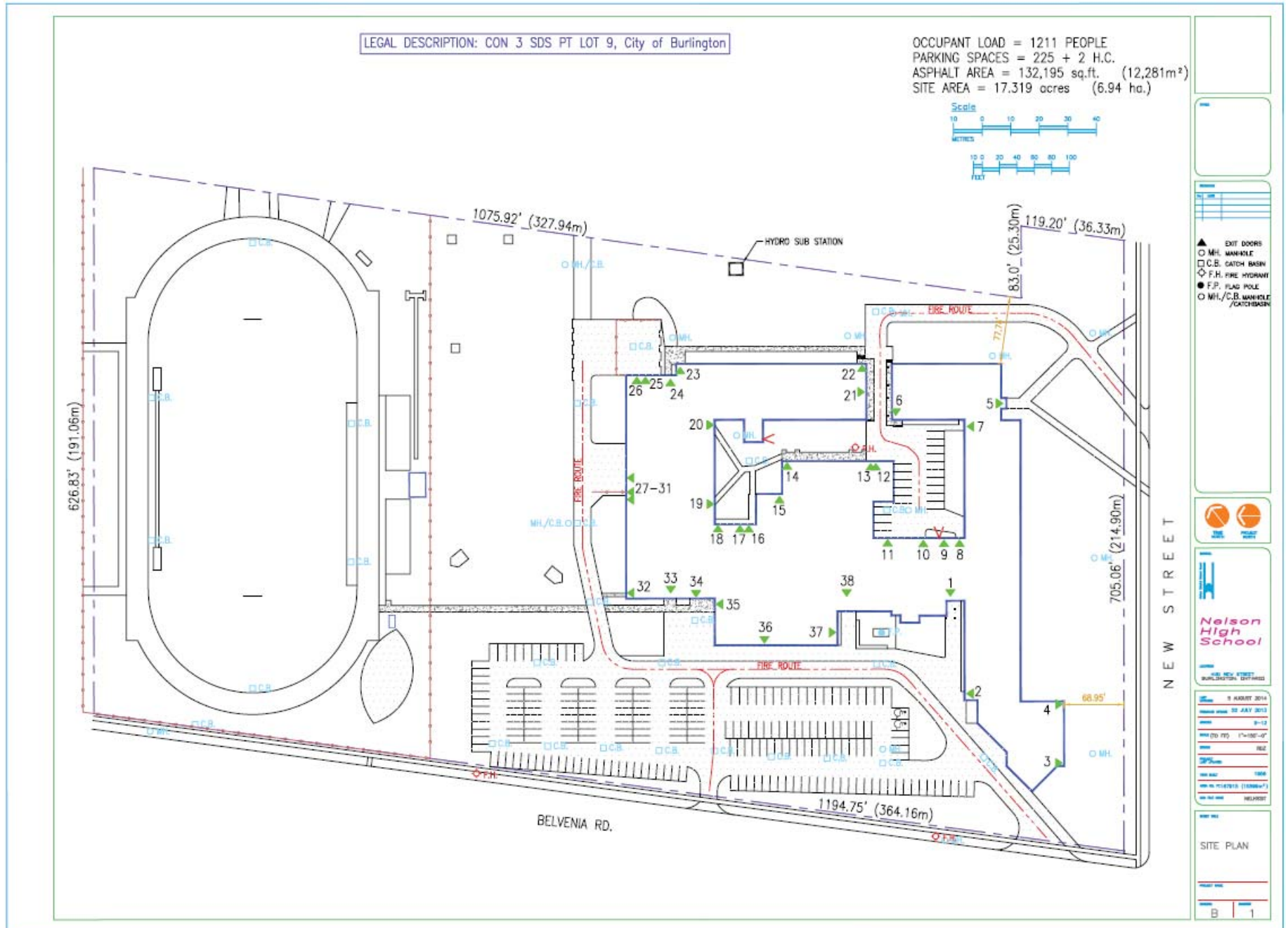
SIP 1.3.3—Site Plan

M.M. Robinson HS



SIP 1.3.3—Site Plan

Nelson HS



SIP 1.3.3—Site Plan

Robert Bateman HS

