

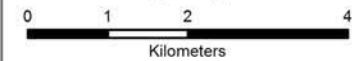
## SIP 2.1.7—Student Distribution

Aldershot HS



# Aldershot

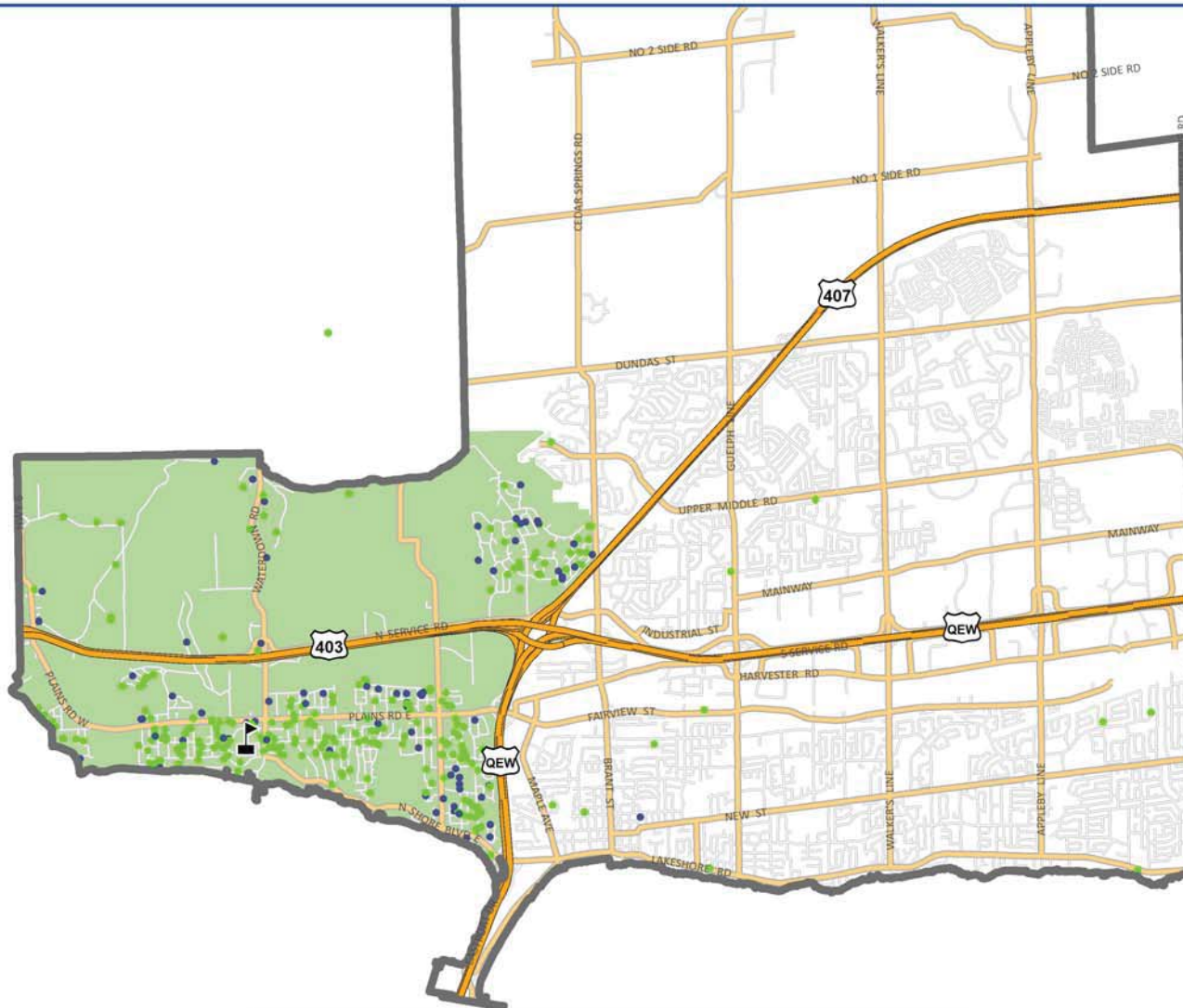
- ENG Students
- FI Students
- ENG & FI Catchment



The current street network was provided by the Regional Municipality of Halton and the Region assumes no responsibility or liability for its use or accuracy.

Proposed roads are subject to change.

It is the intention of the HDSB to provide up-to-date and accurate information, and reasonable efforts have been made by the HDSB to verify the information, however a degree of error or change is inherent. This information is distributed "as is" without warranty. HDSB assumes no legal liability or responsibility for the accuracy, completeness, or usefulness of any information. If you require additional information please contact the Planning Department at 905-335-3663.



	ENG	FI	TOTAL
Within Catchment	310	95	405
Outside of Catchment	11	1	12
Outside of Halton Region	15	4	19
<b>Total</b>	<b>336</b>	<b>100</b>	<b>436</b>

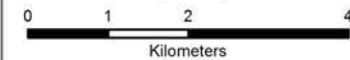
# SIP 2.1.7—Student Distribution

Burlington Central HS



## Burlington Central

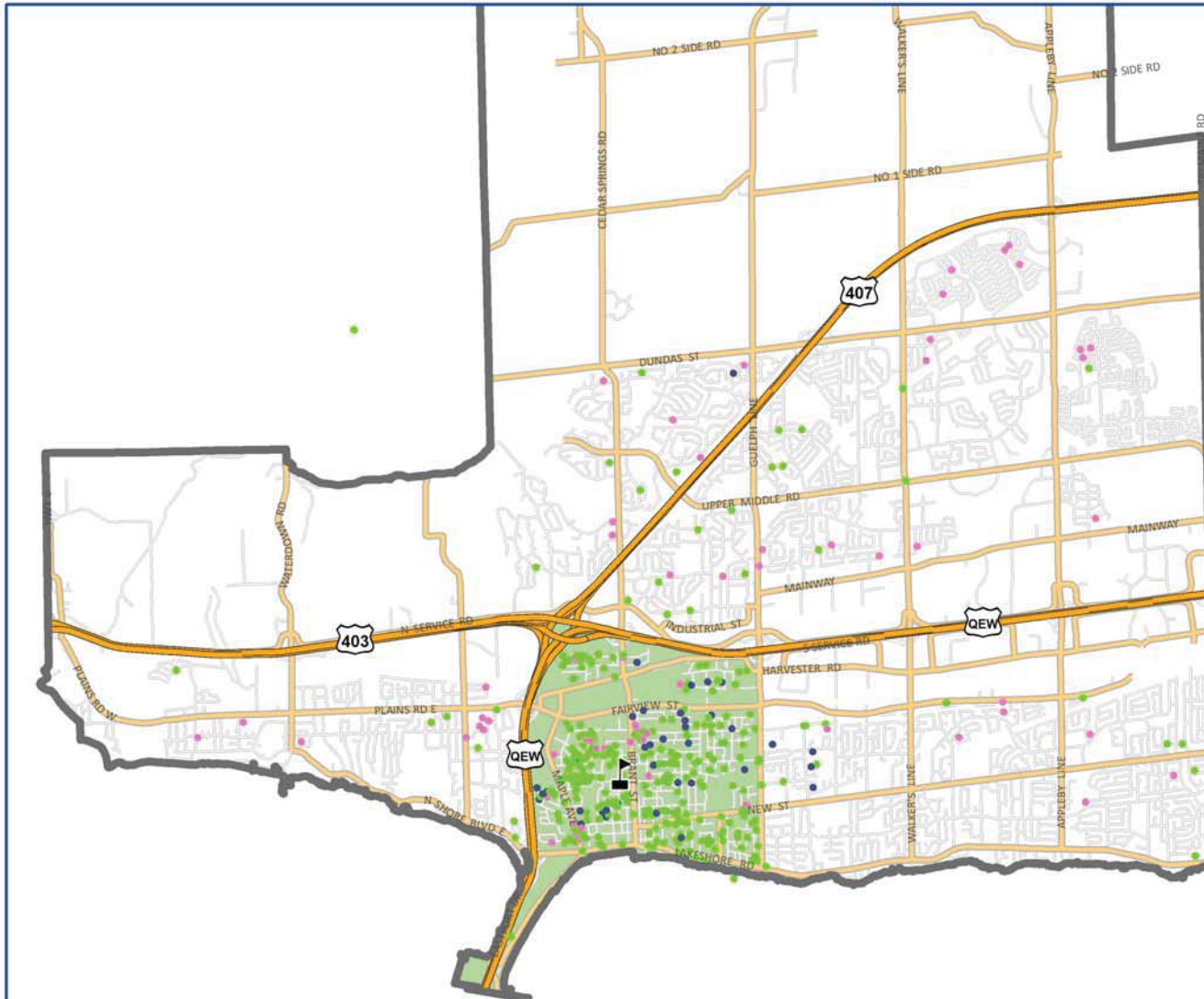
- ENG Students
- FI Students
- ESL Students
- ENG & FI Catchment



The current street network was provided by the Regional Municipality of Halton and the Region assumes no responsibility or liability for its use or accuracy.

Proposed roads are subject to change.

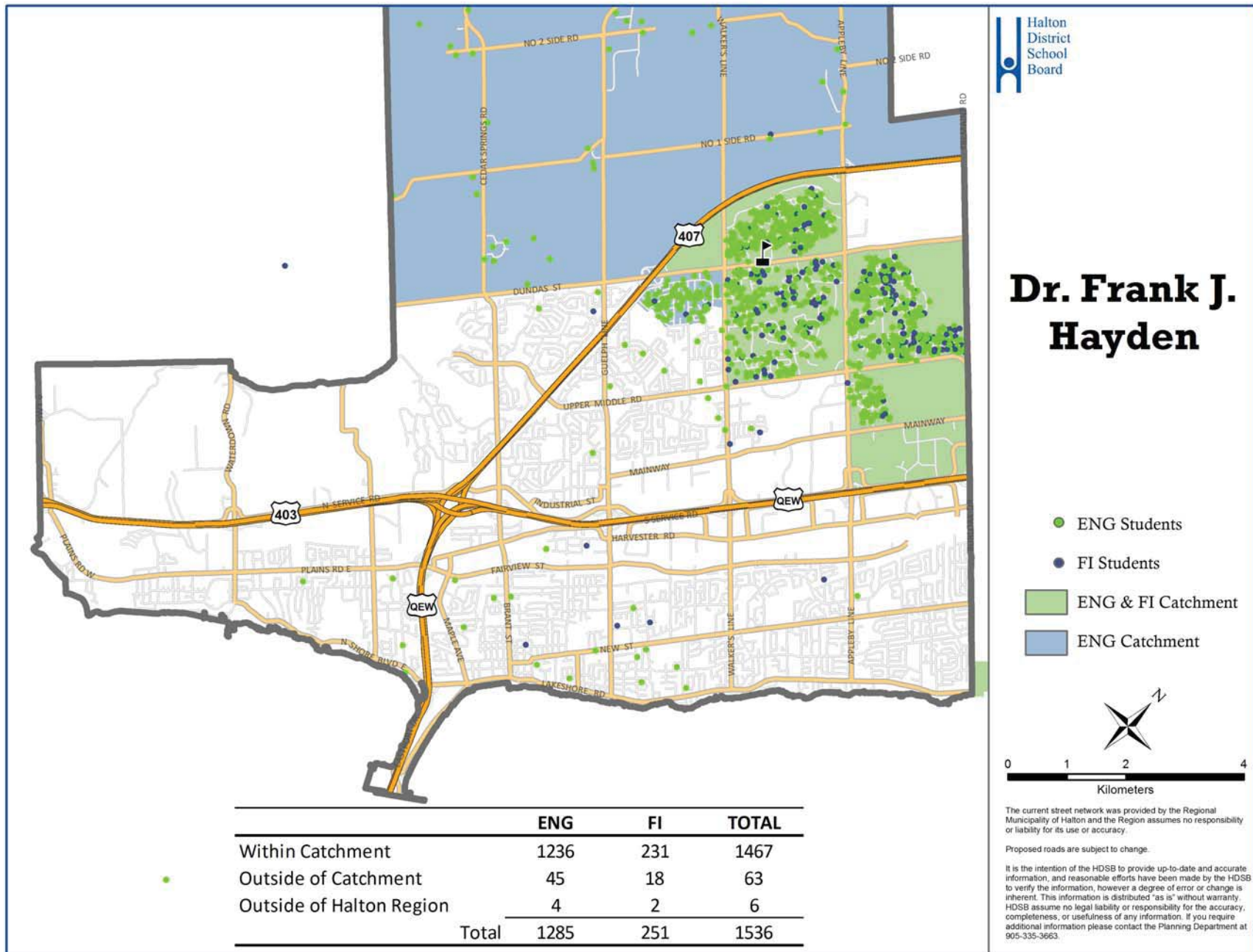
It is the intention of the HDSB to provide up-to-date and accurate information, and reasonable efforts have been made by the HDSB to verify the information, however a degree of error or change is inherent. This information is distributed "as is" without warranty. HDSB assume no legal liability or responsibility for the accuracy, completeness, or usefulness of any information. If you require additional information please contact the Planning Department at 905-335-3663.



	ENG	FI	SC-SPED	ESL	TOTAL
Within Catchment	374	45	1	53	473
Outside of Catchment	50	8		58	116
Outside of Halton Region	8				8
<b>Total</b>	<b>432</b>	<b>53</b>	<b>1</b>	<b>111</b>	<b>597</b>

## SIP 2.1.7—Student Distribution

Dr. Frank J. Hayden SS



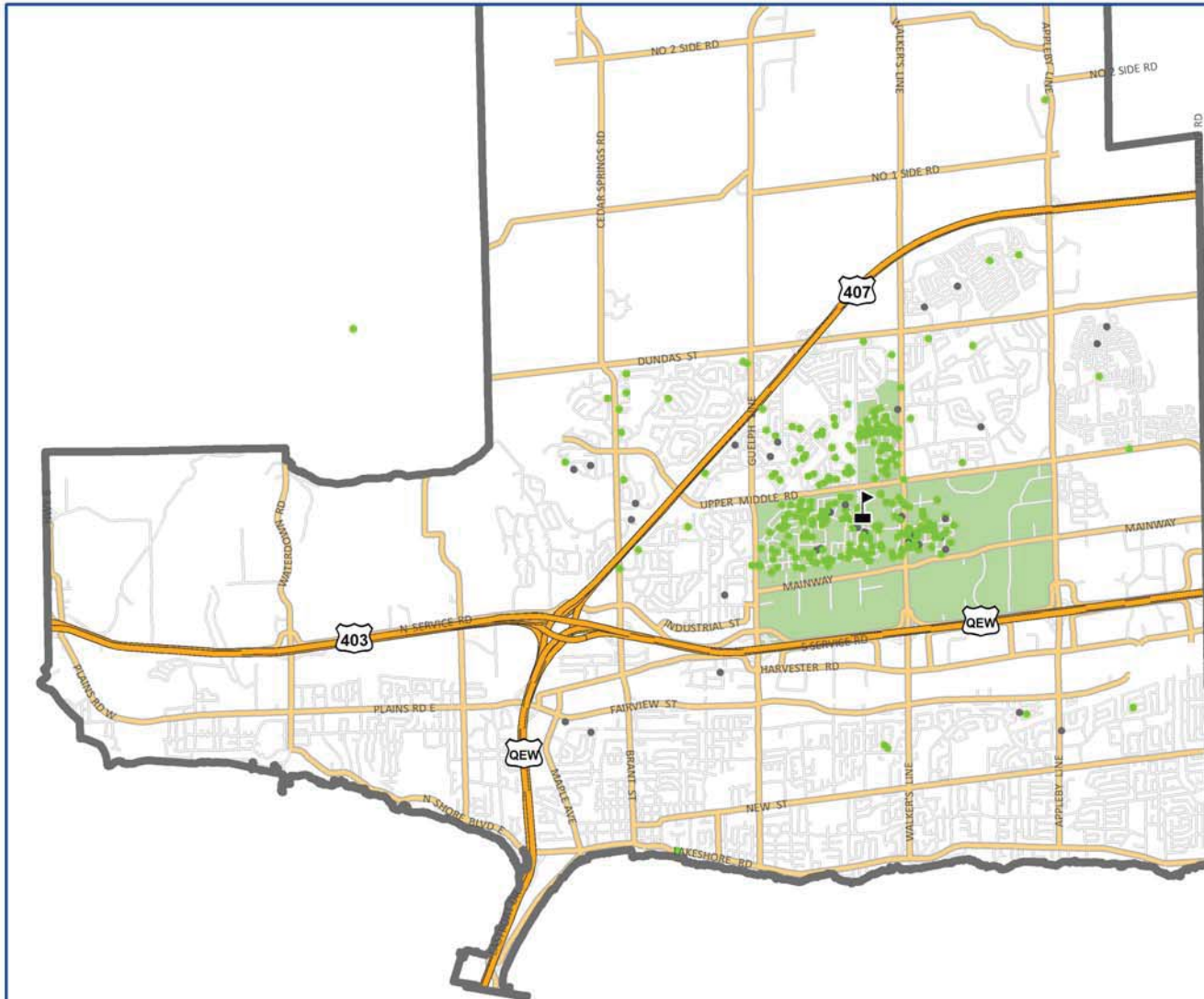


# SIP 2.1.7—Student Distribution

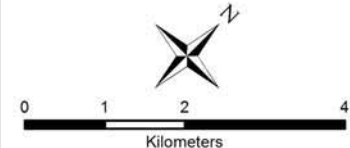
Lester B. Pearson HS



## Lester B. Pearson



- ENG Students
- EXTJ Students
- ENG Catchment



	ENG	EXTJ	TOTAL
Within Catchment	260	45	305
Outside of Catchment	83		83
Outside of Halton Region	3	1	4
<b>Total</b>	<b>346</b>	<b>46</b>	<b>392</b>

The current street network was provided by the Regional Municipality of Halton and the Region assumes no responsibility or liability for its use or accuracy.

Proposed roads are subject to change.

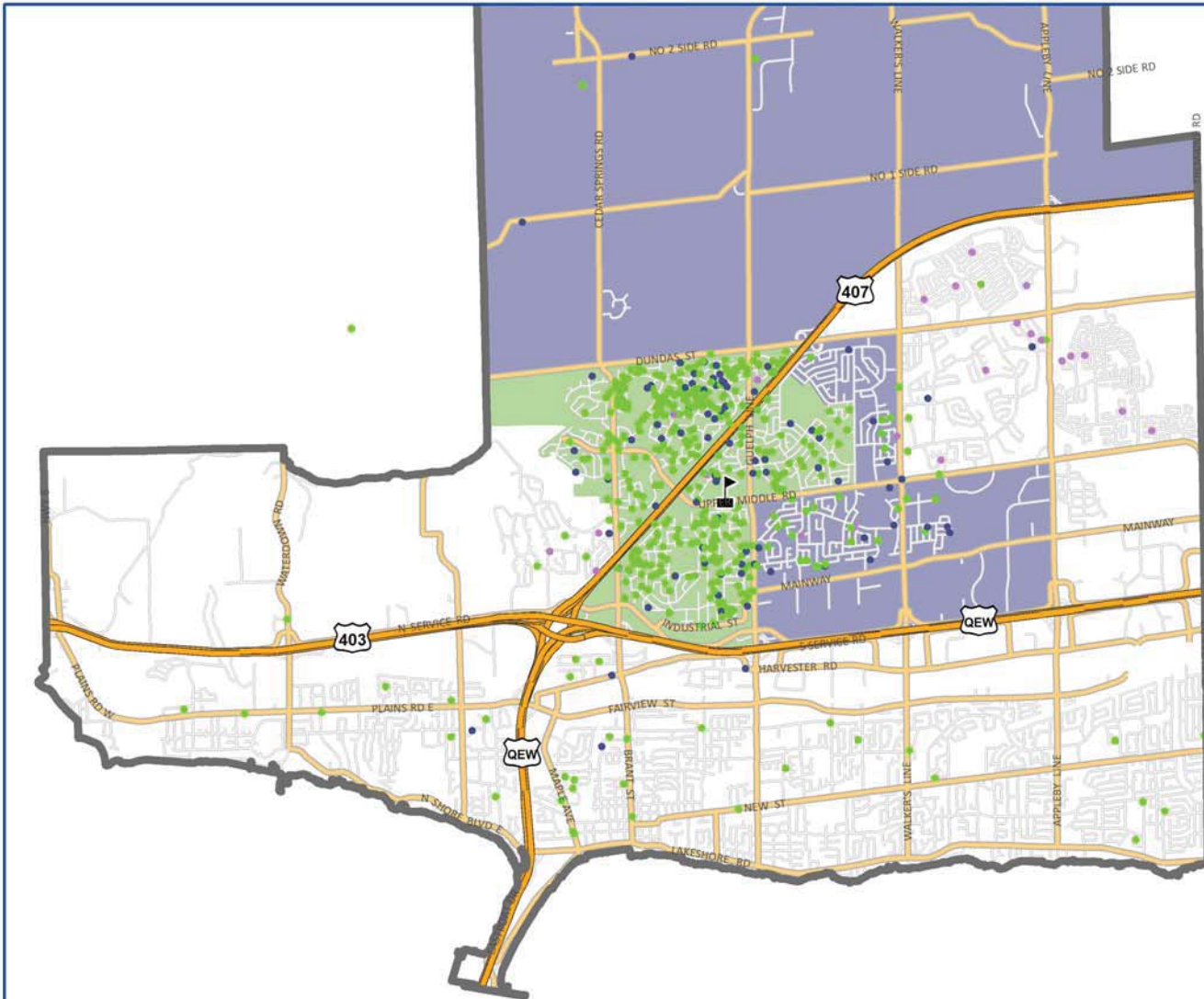
It is the intention of the HDSB to provide up-to-date and accurate information, and reasonable efforts have been made by the HDSB to verify the information, however a degree of error or change is inherent. This information is distributed "as is" without warranty. HDSB assume no legal liability or responsibility for the accuracy, completeness, or usefulness of any information. If you require additional information please contact the Planning Department at 905-335-3663.

# SIP 2.1.7—Student Distribution

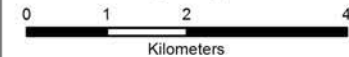
M.M. Robinson HS



## M.M. Robinson



- ENG Students
- FI Students
- SC-SPED Students
- ENG & FI Catchment
- FI Catchment



The current street network was provided by the Regional Municipality of Halton and the Region assumes no responsibility or liability for its use or accuracy.

Proposed roads are subject to change.

It is the intention of the HDSB to provide up-to-date and accurate information, and reasonable efforts have been made by the HDSB to verify the information, however a degree of error or change is inherent. This information is distributed 'as is' without warranty. HDSB assume no legal liability or responsibility for the accuracy, completeness, or usefulness of any information. If you require additional information please contact the Planning Department at 905-335-3663.

	ENG	FI	SC-SPED	TOTAL
Within Catchment	465	103	8	576
Outside of Catchment	98	9	24	131
Outside of Halton Region	5			5
<b>Total</b>	<b>568</b>	<b>112</b>	<b>32</b>	<b>712</b>

# SIP 2.1.7—Student Distribution

Nelson HS



## Nelson

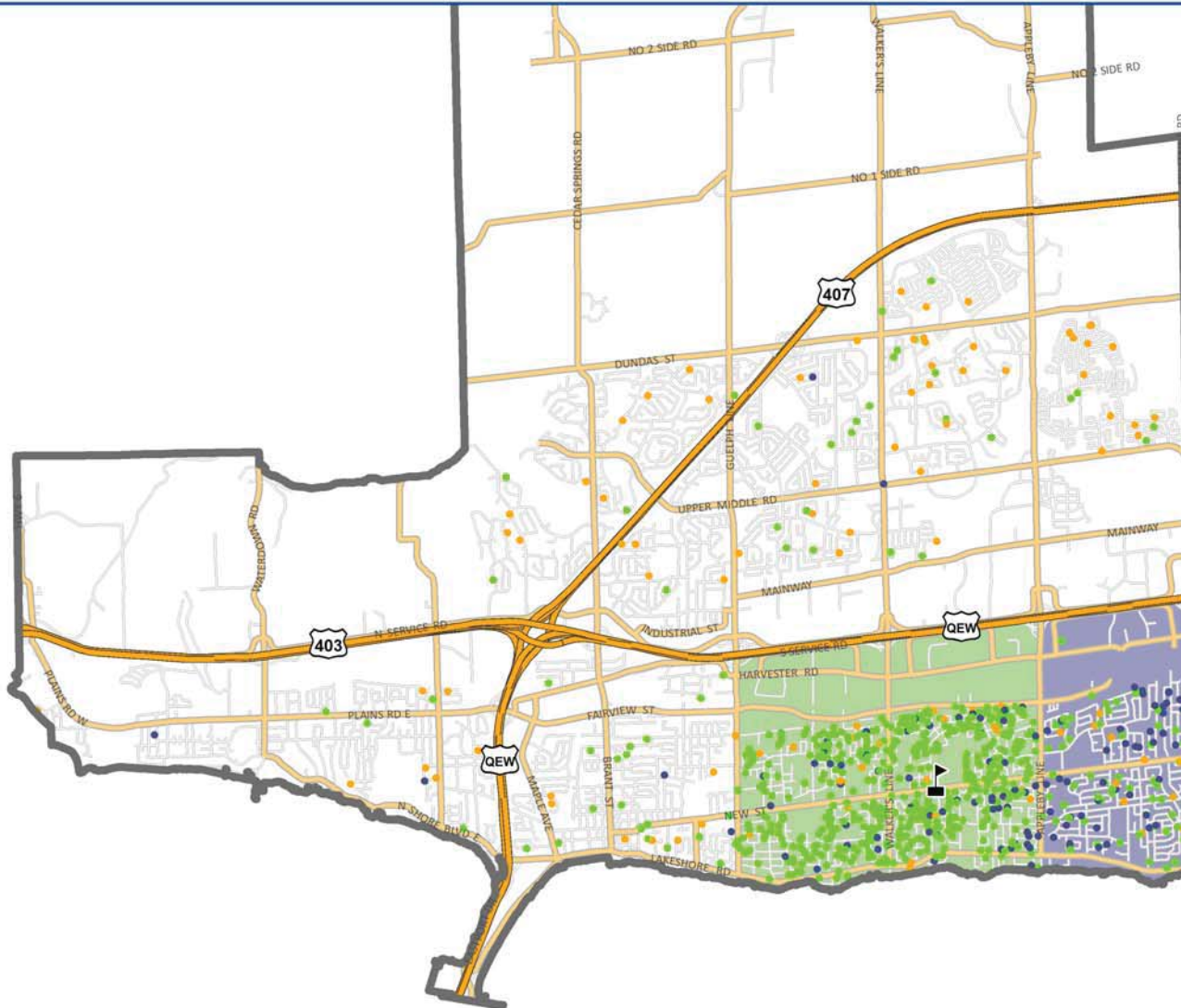
- ENG Students
- FI Students
- Gifted Students
- ENG & FI Catchment
- FI Catchment



The current street network was provided by the Regional Municipality of Halton and the Region assumes no responsibility or liability for its use or accuracy.

Proposed roads are subject to change.

It is the intention of the HDSB to provide up-to-date and accurate information, and reasonable efforts have been made by the HDSB to verify the information, however a degree of error or change is inherent. This information is distributed "as is" without warranty. HDSB assumes no legal liability or responsibility for the accuracy, completeness, or usefulness of any information. If you require additional information please contact the Planning Department at 905-335-3663.



	ENG	FI	Gifted	TOTAL
Within Catchment	624	127	33	784
Outside of Catchment	128	9	80	217
Outside of Halton Region	4	1		5
<b>Total</b>	<b>756</b>	<b>137</b>	<b>113</b>	<b>1006</b>



## SIP 2.1.7—Student Distribution

Robert Bateman HS

