



Halton
District
School
Board

Palermo Boundary Review (ERA 114/115)

Public Information Meeting Dec. 12, 2019

TOGETHER
we inspire every student to



Introductions



Agenda

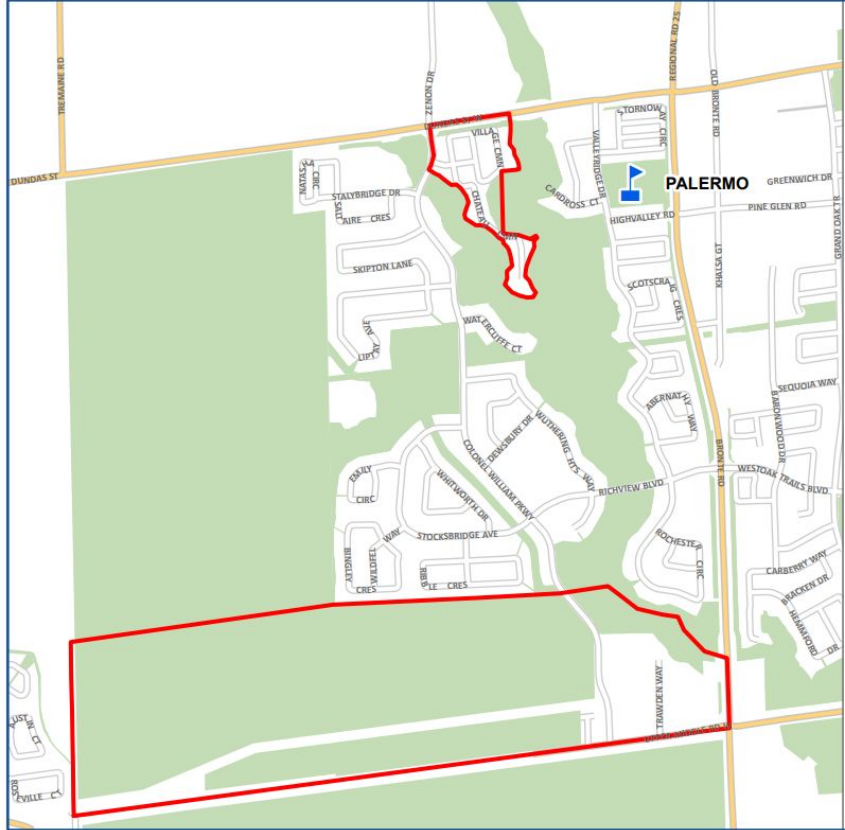
7:00 PM **Information Presentation**

- Welcome and Purpose of Meeting
- Introductions
- Boundary Review Process
- Criteria & Option Selection Process
- Option Information
- Community Input Process
- Next Steps and Timeline for Decision

7:30 PM **Open House**

- Staff available at stations around the room to answer questions

Study Areas



The area being reviewed is in Elementary Review Area (ERA) 114 north of Upper Middle Road and west of Bronte Road.

Specifically,

- North Pocket:
Napa Common/Chateau Common
- South Pocket:
Deerview Common/Trawden Way

Students in these “pockets” attend Heritage Glen PS (located in ERA 115).

Why a Boundary Review?

Historically: 2011/2012 Boundary Review

- Palermo PS was over capacity
- These study areas were not yet developed
- Prior to occupancy, students were directed to Heritage Glen PS for English and French Immersion (K-Gr.8)

At the October 2, 2019 Board meeting, HDSB Trustees approved to initiate the process to establish a boundary review with the following motion:

Be it resolved that the Halton District School Board direct staff to undertake a school boundary review for the two communities north of Upper Middle Road and west of Bronte Road in ERA 114 (Village Common/Chateau Common to the north and Deerview Common/Trawden Way to the south) that are currently attending Heritage Glen PS (ERA 115) with an expected completion date of no later than February 2020.

Why now?

- Palermo PS projections for the next 10 years indicate that there is space for students from these study areas
- Heritage Glen PS projections show that enrolment will increase
- Students in these study areas can now attend the school in their community
- Students will attend secondary school with their elementary cohort

Boundary Review Steering Committee (BRSC)

Family of Schools Superintendent of ERA 114 and 115	Superintendent Colette Ruddock - BRSC Chair
Trustees for ERA 114 and 115	Trustee Tracey Ehl Harrison Trustee Joanna Oliver
Planning Department	Dom Renzella (General Manager) Laureen Choi (Senior Planning Analyst) Kathie Panzer (Planning Analyst)
Boundary Review Committee (BRC) Co-Chairs (appointed by Director and Chair of the Board)	Trustee Margo Shuttleworth Superintendent Terri Blackwell

As necessary, the committee may also include the following supplementary members:

- Superintendent of Program
- Superintendent of Business Services
- Superintendent of Student Services

Role of the Steering Committee

A Boundary Review Steering Committee is established to lead the school boundary review process.

- Determine and communicate which schools are part of the Boundary Review
- Generate initial boundary option(s)
- Determine the consultation process pathway. The options are:
 - consult with the community through Public Information Meetings regarding the Boundary Review Committee's preferred option(s); **OR**
 - inform the community of the recommended option(s)
- Recommend preferred option(s) to Administrative Council and the Director

Boundary Review: Pathway #2

Pathway #2 - there are limited possible options for review

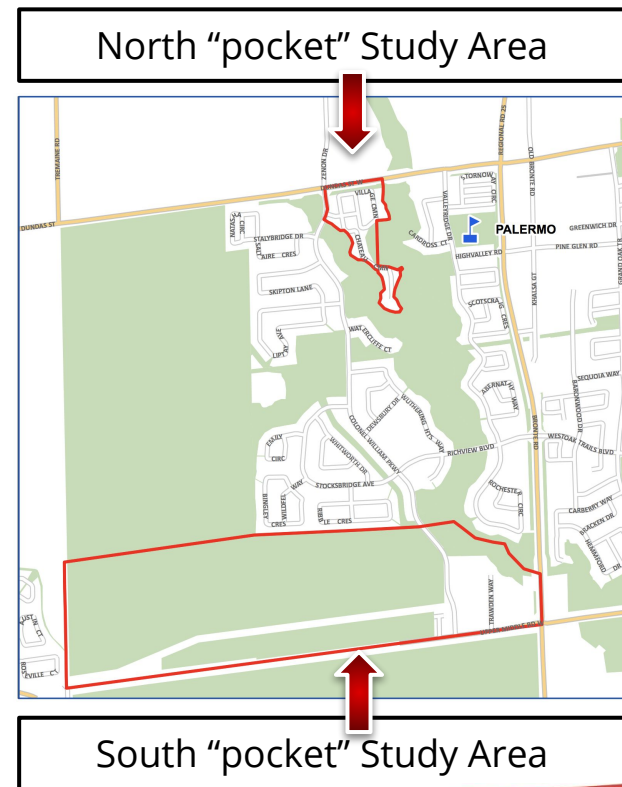
Informing the Community

- Letter sent to Heritage Glen and Palermo Families
- Communication to residents living in the study areas
- Attend Palermo and Heritage Glen School Council Meetings
- Public Open House Meeting
- Information posted on the Board website
- Email address available to respond to receive and respond to questions

Who is potentially impacted?

Number of Heritage Glen PS students in Study Areas * as of November 1, 2019

Boundary Area	Total
North Study Area (K-8 English Program)	17
North Study Area (Gr. 2 - 8 French Immersion)	5
South Study Area (K-8 English Program)	32
South Study Area (Gr. 2 - 8 French Immersion)	10
Grand Total	64



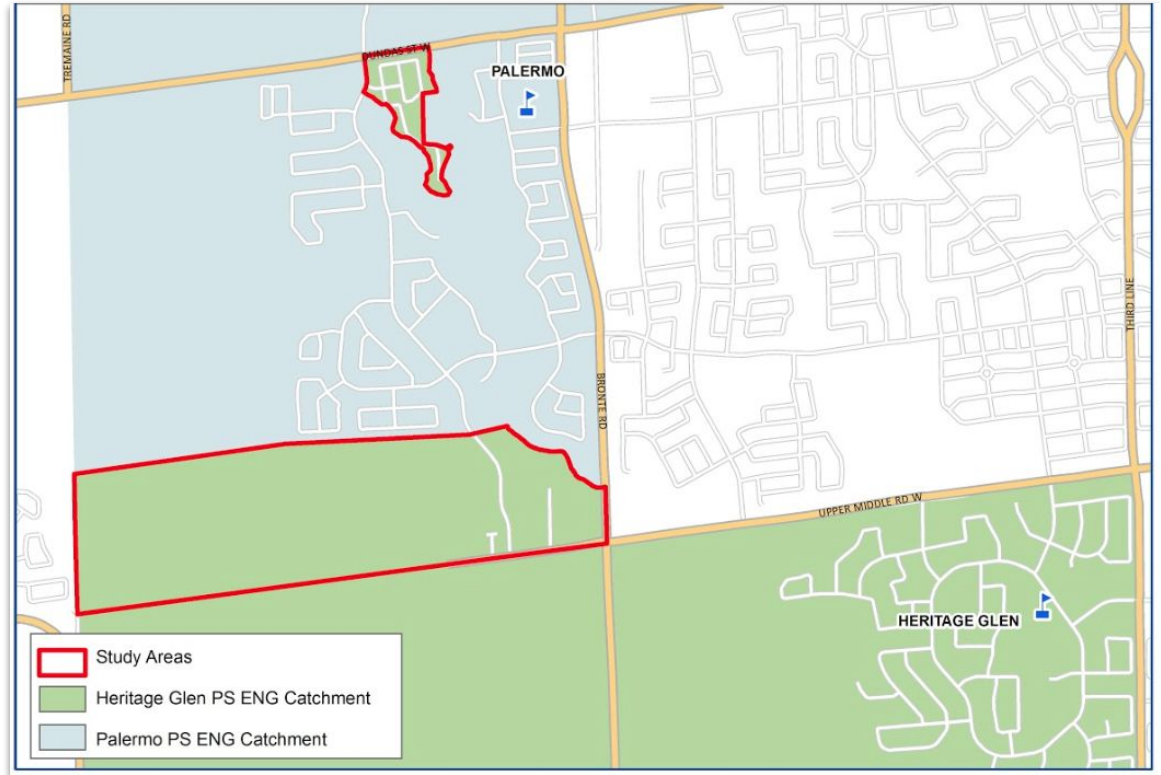
Criteria for Boundary Option(s)

Possible criteria to measure impact and effectiveness of option(s) could include but is not limited to:

- Viability of program
- Proximity to schools
- Balance of overall enrolment
- Stable, long-term boundaries
- Transportation
- Fiscal Responsibility
- Student Experience
- Other

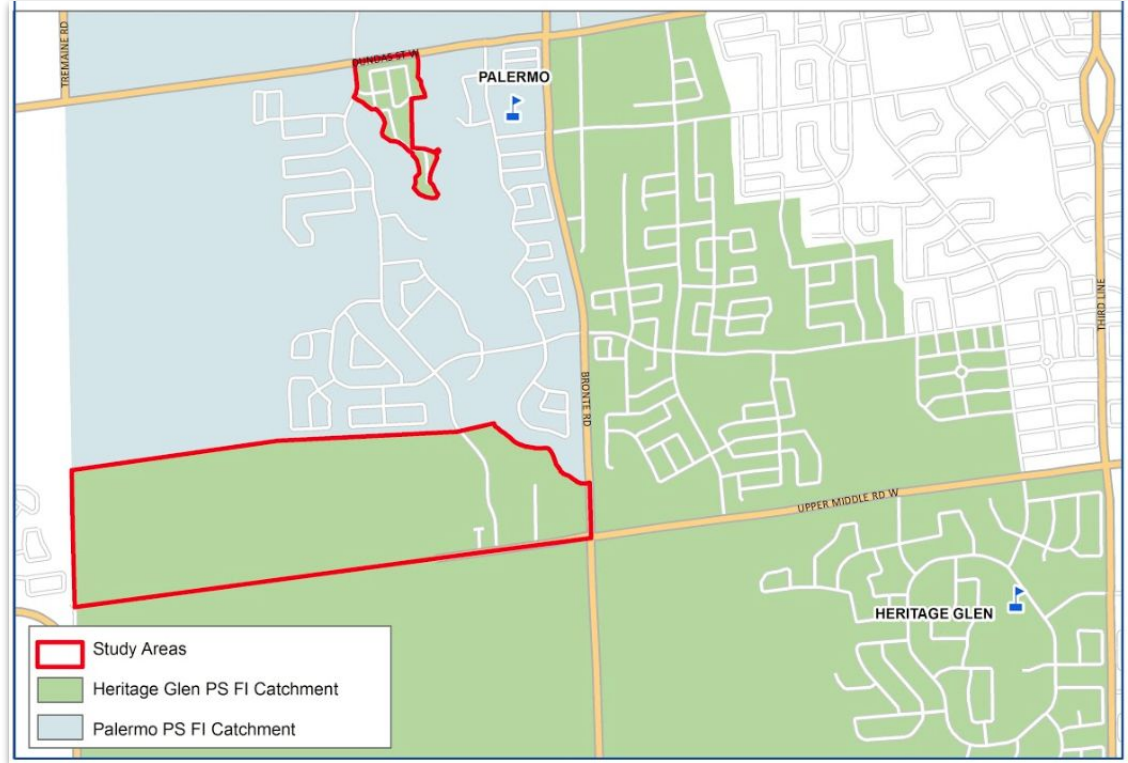
Current Boundary

English Program Boundary (K - Gr. 8)

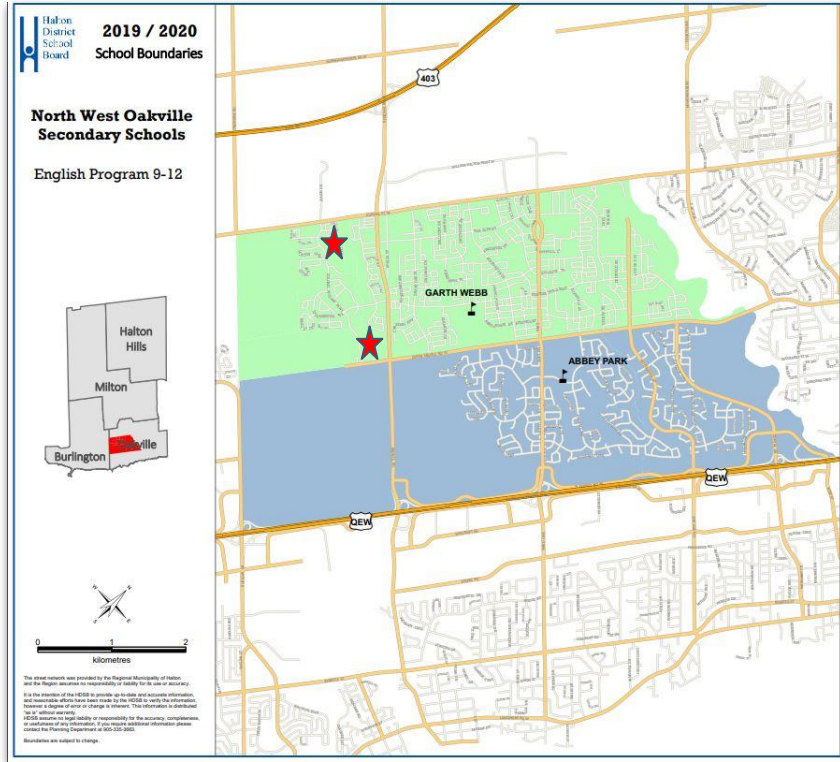


Current Boundary

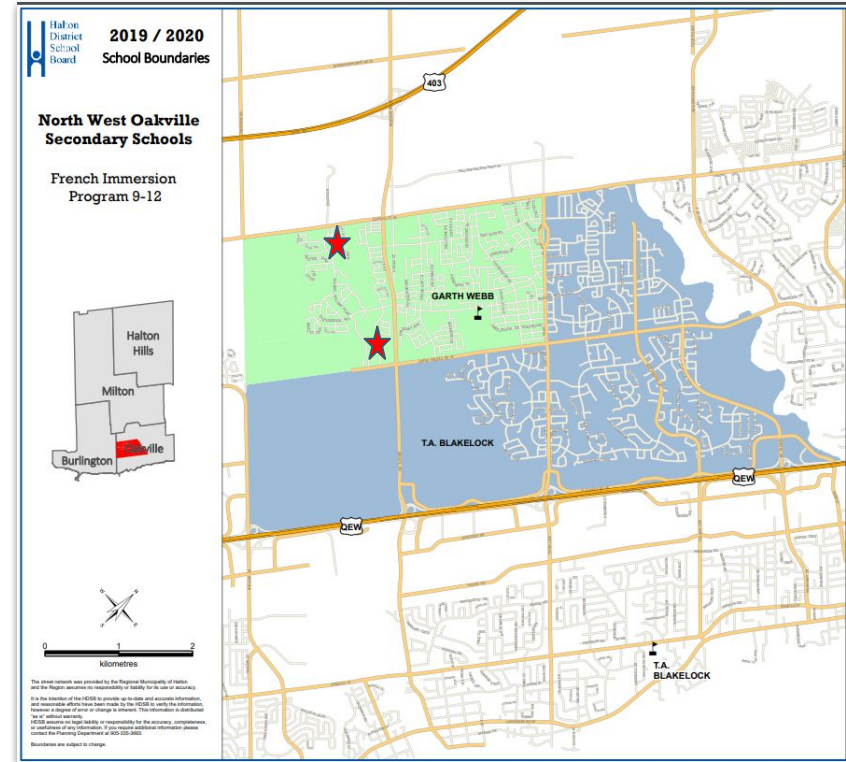
French Immersion Boundary (Gr. 2 - 8)



Secondary School



English Program (9-12)



French Immersion Program (9-12)

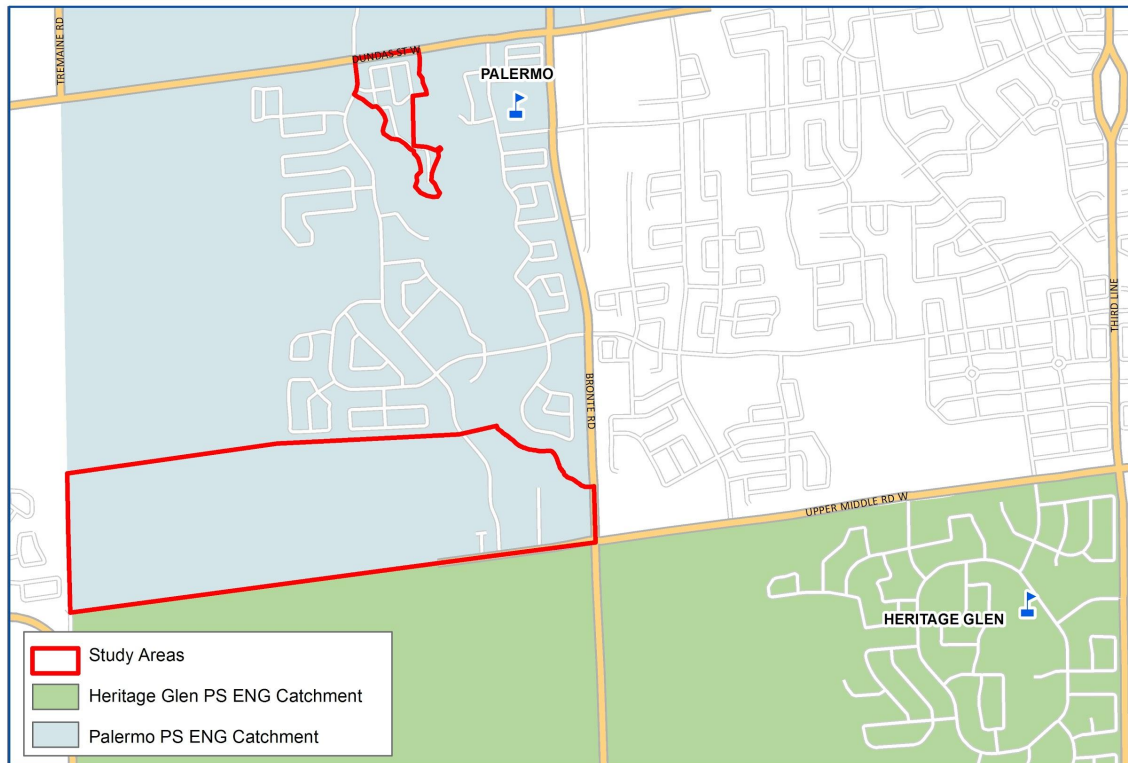
Option 1

As of September 2020 in the North pocket and South pocket study areas:

- JK to Gr7 ENG and Gr2 to Gr7 FI move from Heritage Glen PS to Palermo PS
- Gr8 ENG and FI students at Heritage Glen PS grandparented at Heritage Glen PS
- Younger siblings of Gr8 students can remain with their Gr8 sibling at Heritage Glen PS until Gr8 student graduates

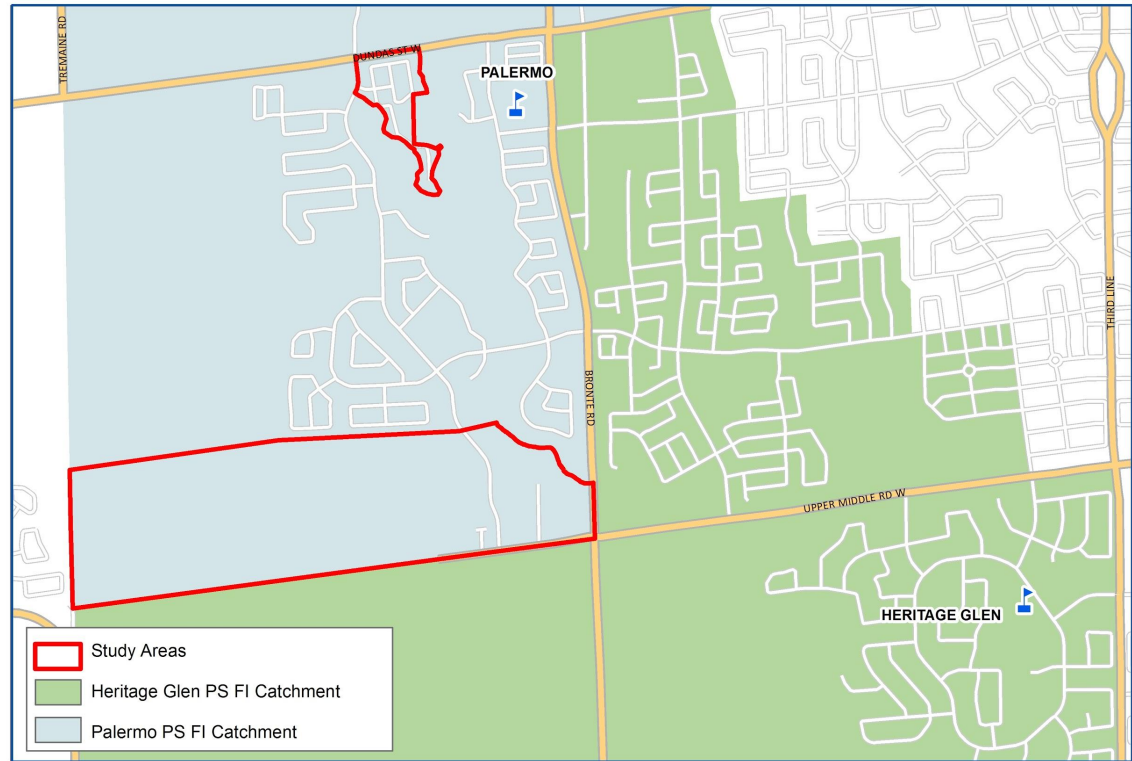
Option 1

English Program Boundary (K - Gr. 8)



Option 1

French Immersion Boundary (Gr. 2 - 8)



Considerations for Feedback

- Students in Grade 8 (2020/2021)
- Elementary Optional Attendance processes
- Grandparenting
- Other

Feedback Process

- Laptop computers available to complete feedback
- Visit one of the stations set up in the room
- Further questions or comments please contact the Planning Department at palermoboundaryreview@hdsb.ca
- Public Consultation Feedback Form available online at www.hdsb.ca or <https://tinyurl.com/PalermoBR>

Deadline for feedback is 4pm on Friday, Dec. 20, 2019

Next Steps and Timeline

- Feedback from the public consultation process is collated and provided to the Boundary Review Steering Committee (BRSC) for review.
- The BRSC will use this information when making their recommendation(s) to the Director.
- Director takes the recommended option to Trustees and/or may revise the recommended option prior to presenting it to Trustees.
- Trustees will make final decision on the boundary.

Process	Timeline
Director Announces Boundary Review	Oct. 2, 2019
Boundary Review Steering Committee	Nov. - Dec., 2019
School Council Meetings	Dec. 2, 2019
Public Information Meeting/Open House	Dec. 12, 2019
Deadline for Public Feedback	Dec. 20, 2019
Board Report Posted	Jan. 31, 2020
Recommendation to the Board	Feb. 5, 2020
Board Meeting for Decision	Feb. 19, 2020

Visit www.hdsb.ca and search

“Palermo Boundary Review”

