

Current Boundaries (Elementary)

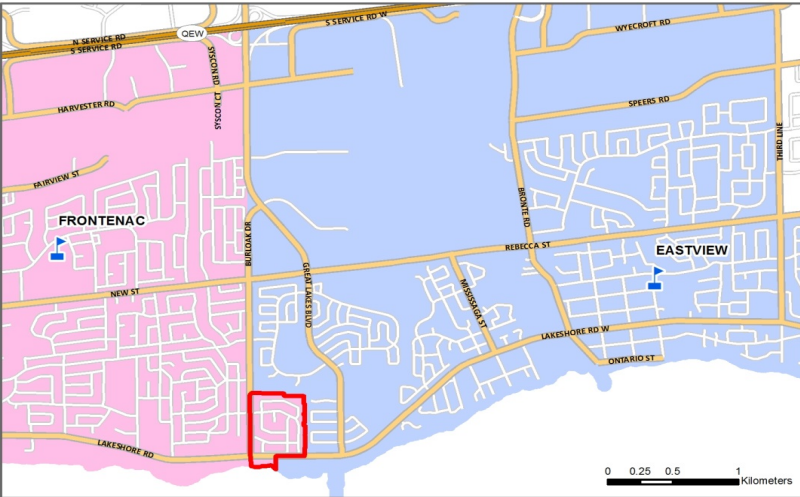


Halton
District
School
Board

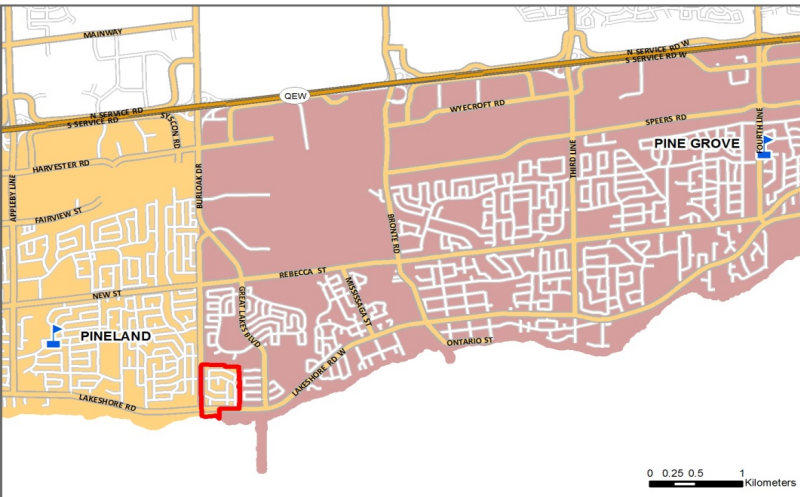
English Program Boundary
Grades JK - 6



English Program Boundary
Grades 7 - 8



French Immersion Program Boundary
Grades 2- 8



Curtis
Estates



It is the intention of the HDSB to provide up-to-date and accurate information, and reasonable efforts have been made by the HDSB to verify the information, however a degree of error or change is inherent. This information is distributed “as is” without warranty. HDSB assume no legal liability or responsibility for the accuracy, completeness, or usefulness of any information. If you require additional information please contact the Planning Department at 905-335-3663.



School	Program	OTG	Max. Port	Total Cap	2018	2019	2020	2021	2022	2023	2024	2025	2026	2027	2028
Eastview PS	ENG	562	12	838	448	437	445	441	432	429	442	437	412	403	398
	SC-SPED				17	18	18	18	18	18	18	18	18	18	18
	Total				465	455	463	459	450	447	460	455	430	421	416
	Available Pupil Places				97	107	99	103	112	115	102	107	132	142	146
	Percent Utilization				83%	81%	82%	82%	80%	80%	82%	81%	76%	75%	74%
Gladys Speers PS	ENG	395	5	510	402	394	376	356	350	334	310	297	296	294	298
	Total				402	394	376	356	350	334	310	297	296	294	298
	Available Pupil Places				-7	1	19	39	45	61	85	98	99	101	97
	Percent Utilization				102%	100%	95%	90%	89%	85%	79%	75%	75%	74%	75%
Pine Grove PS	FI	567	12	843	522	512	465	448	430	406	408	414	410	405	397
	Total				522	512	465	448	430	406	408	414	410	405	397
	Available Pupil Places				45	55	102	119	137	161	159	153	157	162	171
	Percent Utilization				92%	90%	82%	79%	76%	72%	72%	73%	72%	71%	70%
Frontenac PS	ENG	757	5	872	526	547	560	559	558	565	567	539	558	553	550
	SC-SPED				22	25	25	25	25	25	25	25	25	25	25
	Total				548	572	585	584	583	590	592	564	583	578	575
	Available Pupil Places				209	185	172	173	174	167	165	193	174	179	182
	Percent Utilization				72%	76%	77%	77%	77%	78%	78%	75%	77%	76%	76%
Mohawk Gardens PS	ENG	504	8	688	398	399	406	401	404	392	395	387	380	386	385
	Total				398	399	406	401	404	392	395	387	380	386	385
	Available Pupil Places				106	105	98	103	101	112	110	117	124	119	119
	Percent Utilization				79%	79%	81%	79%	80%	78%	78%	77%	75%	76%	76%
Pineland PS	ENG	651	6	789	57	25									
	FI				525	516	483	453	434	417	408	408	405	402	397
	Total				582	541	483	453	434	417	408	408	405	402	397
	Available Pupil Places				69	110	168	198	217	234	243	243	246	249	254
	Percent Utilization				89%	83%	74%	70%	67%	64%	63%	63%	62%	62%	61%
Study Total					2917	2873	2779	2700	2650	2586	2573	2524	2503	2485	2468

Current elementary school 2019/2020 boundaries and programs

Samuel Curtis Estates (study area outlined in Red)

- 2019/2020 elementary students in this area currently go to:
 - Mohawk Gardens PS (JK-6 ENG)
 - Frontenac PS (7 ENG)
 - Pineland PS (8 ENG, 2-8 FI)
- In 2020/2021, elementary students in this area go to:
 - Mohawk Gardens PS (JK-6 ENG)
 - Frontenac PS (7-8 ENG)
 - Pineland PS (2-8 FI)

Eastview PS

- JK-8 ENG school, contains Life Skills program

Gladys Speers PS

- JK-6 ENG school

Pine Grove PS

- 2-8 FI school

Frontenac PS

- JK-8 ENG school, contains Behaviour Resource, Learning Disability and Life Skills programs

Mohawk Gardens PS

- JK-6 ENG school

Pineland PS

- Grade 8 ENG and 2-8 FI school
- In 2020/2021 Pineland PS becomes a 2-8 FI school

➤ refer to "Current Boundaries (Secondary)" for secondary school boundary and program details

Notes:

2019 is enrolment as of October 15, 2019

ENG = English Program (JK-8)

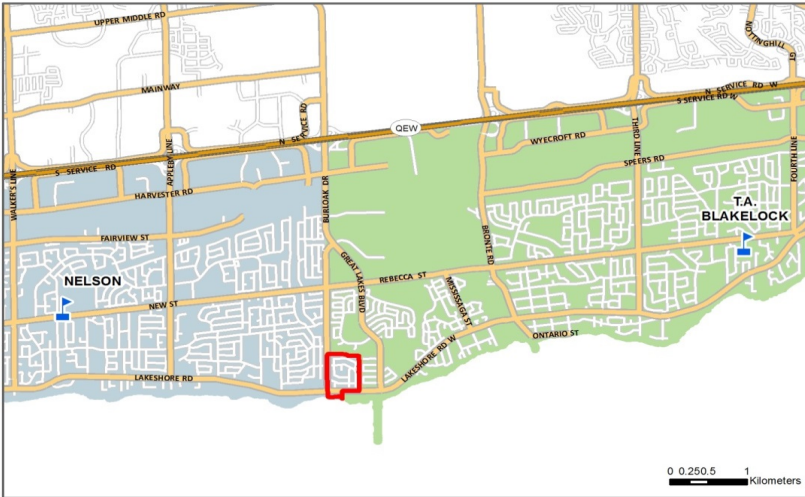
FI = French Immersion Program (2-8)

SC-SPED = Self Contained Special Program

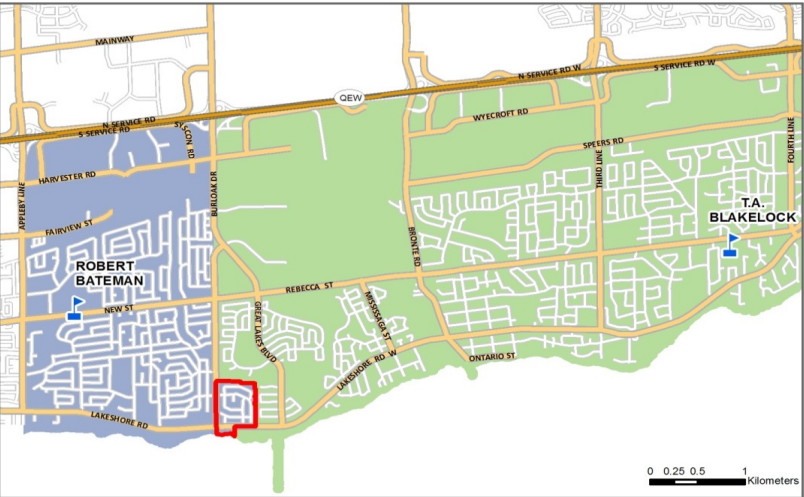
Current Boundaries (Secondary)



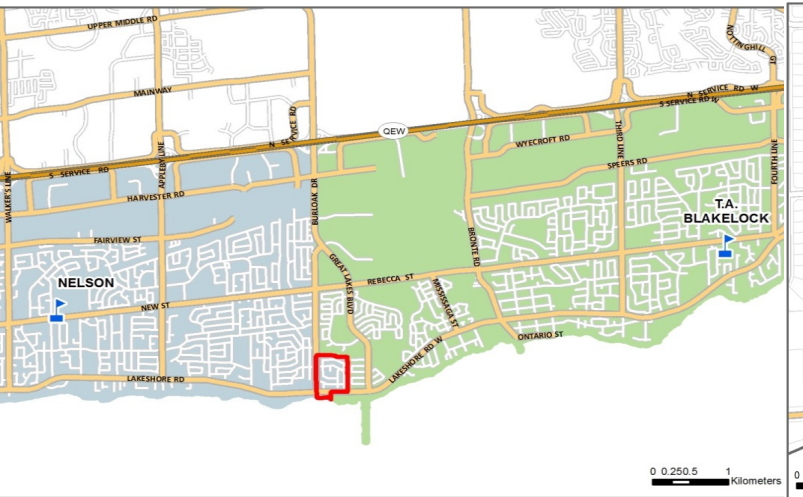
English Program Boundary
Grade 9



English Program Boundary
Grades 10-12



French Immersion Program Boundary
Grades 9-12



Curtis
Estates



It is the intention of the HDSB to provide up-to-date and accurate information, and reasonable efforts have been made by the HDSB to verify the information, however a degree of error or change is inherent. This information is distributed “as is” without warranty. HDSB assume no legal liability or responsibility for the accuracy, completeness, or usefulness of any information. If you require additional information please contact the Planning Department at 905-335-3663.

School	Program	OTG	Max. Port	Total Cap	2018	2019	2020	2021	2022	2023	2024	2025	2026	2027	2028
TA Blakelock HS	ENG	1326	4	1410	733	771	791	848	859	859	856	830	841	806	794
	FI				249	220	219	226	218	220	200	187	189	183	187
	SPED				28	31	31	31	31	31	31	31	31	31	31
	Total				1010	1022	1041	1105	1108	1111	1088	1048	1061	1019	1011
	Available Pupil Places				316	304	285	221	218	215	238	278	266	307	315
	Percent Utilization				76%	77%	78%	83%	84%	84%	82%	79%	80%	77%	76%
Nelson HS*	ENG	1473	12	1725	884	928	1115	1076	1018	1039	988	998	965	906	906
	FI				159	175	213	230	246	254	237	211	200	185	180
	ESS				0	18	74	67	68	71	73	75	74	73	73
	SPED				0	0	53	53	53	53	53	53	53	53	53
	Total	1043	1121	1454	1426	1384	1417	1351	1337	1291	1218	1212			
	Available Pupil Places				430	352	19	47	89	56	122	136	182	256	261
Percent Utilization				71%	76%	99%	97%	94%	96%	92%	91%	88%	83%	82%	
Robert Bateman HS	ENG	1470	3	1605	309	232									
	ESS				106	61									
	IB				174	118									
	SPED				60	51									
	Total	649	462												
	Available Pupil Places				821	1008									
Percent Utilization				44%	31%										
Study Total					2702	2605	2495	2532	2493	2528	2439	2385	2352	2237	2223

* On The Ground (OTG) capacity increases from 1353 to 1473 in September 2020 once additions and renovations are completed

Current 2019/2020 secondary school boundaries and programs

Samuel Curtis Estates (study area outlined in Red)

- 2019/2020 secondary students in this area currently go to:
 - Nelson HS (9 ENG, 9-12 FI)
 - Robert Bateman HS (10-12 ENG)
- In 2020/2021, secondary students in this area go to:
 - Nelson HS (9-12 ENG, 9-12 FI)
 - Robert Bateman HS closes, remaining students directed to Nelson HS

Frontenac PS (students in study area, outlined in Red)

- In September 2020 grade 8 ENG graduates from 2019/2020 school year attend Nelson HS grade 9 ENG

Pineland PS (students in study area, outlined in Red)

- In September 2020 grade 8 ENG graduates from 2019/2020 school year attend Nelson HS grade 9 ENG
- In September 2020 grade 8 FI graduates from 2019/2020 school year attend Nelson HS grade 9 FI

➤ refer to "Current Boundaries (Elementary)" for elementary school boundary and program details

Notes:

2019 is enrolment as of October 15, 2019

ENG = English Program (9-12)

FI = French Immersion Program (9-12)

ESS = Essential Program (9-12)

IB = International Baccalaureate Program (9-12)

SPED = Special Program