

Option 1a (Elementary)



Halton
District
School
Board

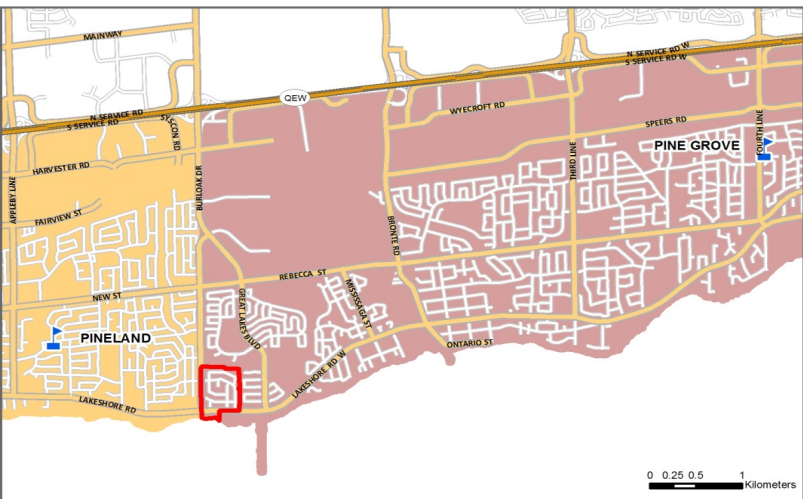
English Program Boundary
Grades JK - 6



English Program Boundary
Grades 7 - 8



French Immersion Program Boundary
Grades 2- 8



Curtis
Estates



It is the intention of the HDSB to provide up-to-date and accurate information, and reasonable efforts have been made by the HDSB to verify the information, however a degree of error or change is inherent. This information is distributed “as is” without warranty. HDSB assume no legal liability or responsibility for the accuracy, completeness, or usefulness of any information. If you require additional information please contact the Planning Department at 905-335-3663.



School	Program	OTG	Max. Port	Total Cap	2018	2019	2020	2021	2022	2023	2024	2025	2026	2027	2028
Eastview PS	ENG	562	12	838	448	437	447	444	433	431	446	441	419	409	400
	SC-SPED				17	18	18	18	18	18	18	18	18	18	18
	Total				465	455	465	462	451	449	464	459	437	427	418
	Available Pupil Places				97	107	97	100	111	113	98	103	125	135	144
	Percent Utilization				83%	81%	83%	82%	80%	80%	83%	82%	78%	76%	74%
Gladys Speers PS	ENG	395	5	510	402	394	391	372	366	350	325	310	305	304	307
	Total				402	394	391	372	366	350	325	310	305	304	307
	Available Pupil Places				-7	1	4	23	29	45	70	85	90	92	88
	Percent Utilization				102%	100%	99%	94%	93%	89%	82%	79%	77%	77%	78%
Pine Grove PS	FI	567	12	843	522	512	473	460	439	413	416	421	417	412	401
	Total				522	512	473	460	439	413	416	421	417	412	401
	Available Pupil Places				45	55	94	107	128	154	152	146	150	155	166
	Percent Utilization				92%	90%	83%	81%	77%	73%	73%	74%	74%	73%	71%
Frontenac PS	ENG	757	5	872	526	547	558	556	557	563	563	535	550	547	548
	SC-SPED				22	25	25	25	25	25	25	25	25	25	25
	Total				548	572	583	581	582	588	588	560	575	572	573
	Available Pupil Places				209	185	174	176	175	169	169	198	182	185	184
	Percent Utilization				72%	76%	77%	77%	77%	78%	78%	74%	76%	76%	76%
Mohawk Gardens PS	ENG	504	8	688	398	399	391	385	387	377	380	373	371	376	376
	Total				398	399	391	385	387	377	380	373	371	376	376
	Available Pupil Places				106	105	113	119	117	127	124	131	133	128	128
	Percent Utilization				79%	79%	78%	76%	77%	75%	75%	74%	74%	75%	75%
Pineland PS	ENG	651	6	789	57	25									
	FI				525	516	474	441	425	410	401	400	398	395	393
	Total				582	541	474	441	425	410	401	400	398	395	393
	Available Pupil Places				69	110	177	210	226	241	250	251	254	256	259
	Percent Utilization				89%	83%	73%	68%	65%	63%	62%	62%	61%	61%	60%
Study Total					2917	2873	2779	2700	2650	2586	2573	2524	2503	2485	2468

Option 1a (Elementary) --> Starting in September 2020, Samuel Curtis Estates directed to Gladys Speers PS (JK-6 ENG), Eastview PS (7-8 ENG) and Pine Grove PS (2-8 FI)

Samuel Curtis Estates (study area outlined in Red)

- 2019/2020 elementary students in this area currently go to:
 - Mohawk Gardens PS (JK-6 ENG)
 - Frontenac PS (7 ENG)
 - Pineland PS (8 ENG, 2-8 FI)
- In 2020/2021, elementary students in this area go to: ****CHANGES MADE****
 - JK-5 ENG students in Mohawk Gardens PS are directed to Gladys Speers PS, grade 6 ENG students in Mohawk Gardens PS will remain to graduate at from Mohawk Gardens PS and will then attend Eastview PS for grade 7 ENG in September 2021
 - Grade 7 ENG students in Frontenac PS are directed to Eastview PS
 - Grade 2-7 FI students in Pineland PS are directed to Pine Grove PS

- Grade 8 ENG students remain at Frontenac PS and grade 8 FI students remain at Pineland PS to graduate at their existing schools

Eastview PS

- JK-8 ENG school, contains Life Skills program

Gladys Speers PS

- JK-6 ENG school

Pine Grove PS

- 2-8 FI school

Frontenac PS

- JK-8 ENG school, contains Behaviour Resource, Learning Disability and Life Skills programs

Mohawk Gardens PS

- JK-6 ENG school

Pineland PS

- Grade 8 ENG and 2-8 FI school
- In 2020/2021 Pineland PS becomes a 2-8 FI school

➤ refer to "Option 1a (Secondary)" for secondary school boundary and program details

Notes:

2019 is enrolment as of October 15, 2019

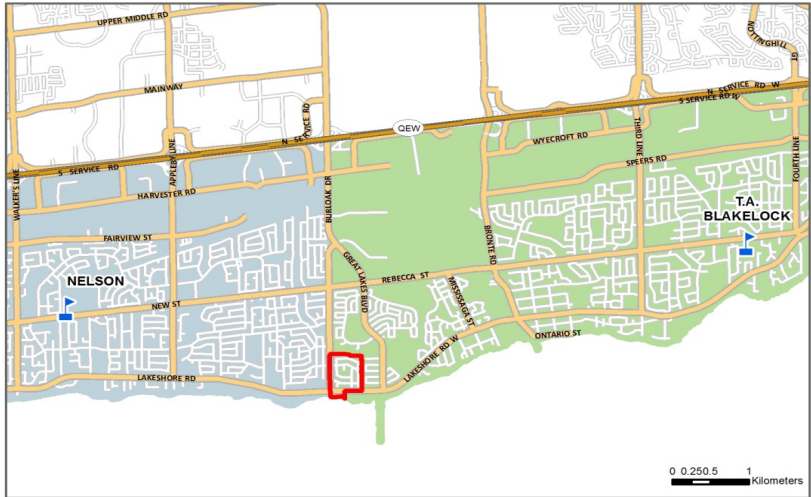
ENG = English Program (JK-8)

FI = French Immersion Program (2-8)

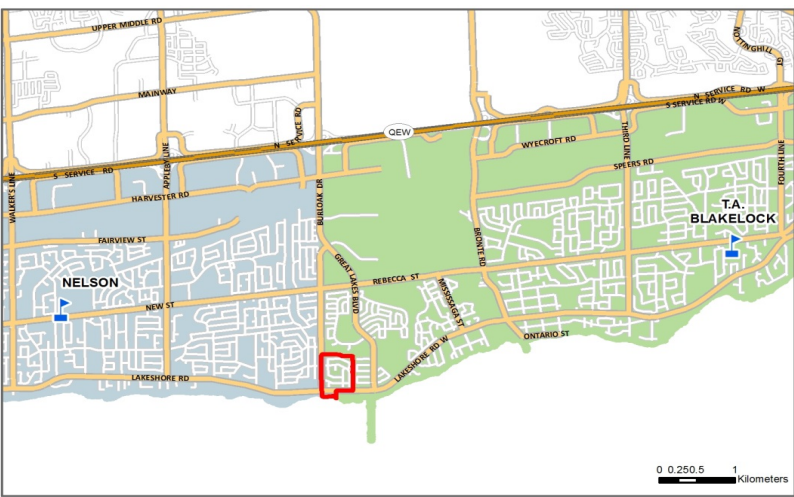
Option 1a (Secondary)



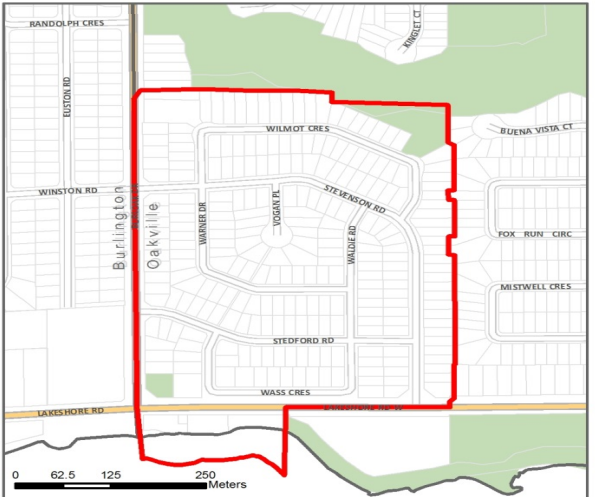
English Program Boundary
Grades 9-12



French Immersion Program Boundary
Grades 9-12



Curtis
Estates



It is the intention of the HDSB to provide up-to-date and accurate information, and reasonable efforts have been made by the HDSB to verify the information, however a degree of error or change is inherent. This information is distributed “as is” without warranty. HDSB assume no legal liability or responsibility for the accuracy, completeness, or usefulness of any information. If you require additional information please contact the Planning Department at 905-335-3663.

School	Program	OTG	Max. Port	Total Cap	2018	2019	2020	2021	2022	2023	2024	2025	2026	2027	2028
TA Blakelock HS	ENG	1326	4	1410	733	771	791	850	863	865	864	838	849	814	802
	FI				249	220	219	227	220	223	204	191	193	187	191
	SPED				28	31	31	31	31	31	31	31	31	31	31
	Total				1010	1022	1041	1108	1114	1120	1100	1060	1073	1031	1023
	Available Pupil Places				316	304	285	218	212	206	226	266	254	295	303
	Percent Utilization				76%	77%	78%	84%	84%	84%	83%	80%	81%	78%	77%
Nelson HS*	ENG	1473	12	1725	884	928	1115	1074	1014	1033	980	990	957	898	898
	FI				159	175	213	229	244	251	233	207	196	181	176
	ESS				0	18	74	67	68	71	73	75	74	73	73
	SPED				0	0	53	53	53	53	53	53	53	53	53
	Total	1043	1121	1454	1423	1378	1408	1339	1325	1279	1206	1200			
	Available Pupil Places				430	352	19	50	95	65	134	148	194	268	273
Percent Utilization				71%	76%	99%	97%	94%	96%	91%	90%	87%	82%	81%	
Robert Bateman HS	ENG	1470	3	1605	309	232									
	ESS				106	61									
	IB				174	118									
	SPED				60	51									
	Total	649	462												
	Available Pupil Places				821	1008									
Percent Utilization				44%	31%										
Study Total					2702	2605	2495	2532	2493	2528	2439	2385	2352	2237	2223

* On The Ground (OTG) capacity increases from 1353 to 1473 in September 2020 once additions and renovations are completed

Option 1a (Secondary) --> Grade 8 ENG and FI graduates from Samuel Curtis Estates directed to Nelson HS for September 2020 only
Current Nelson ENG and FI students in the study area remain at Nelson HS
Robert Bateman HS students in the study area that moved to Nelson HS when school closed remain at Nelson

Samuel Curtis Estates (study area outlined in Red)

- 2019/2020 secondary students in this area currently go to:
 - Nelson HS (9 ENG, 9-12 FI)
 - Robert Bateman HS (10-12 ENG)
- In 2020/2021, secondary students in this area go to: ****CHANGES MADE****
 - TA Blakelock HS (9-12 ENG, 9-12 FI)
 - current Nelson HS ENG and FI students remain at Nelson HS
 - Robert Bateman HS closes, remaining students directed to Nelson HS

Frontenac PS (students in study area outlined in Red)

- In September 2020 grade 8 ENG graduates from 2019/2020 school year attend Nelson HS

Pineland PS (students in study area outlined in Red)

- In September 2020 grade 8 ENG graduates from 2019/2020 school year attend Nelson HS
- In September 2020 grade 8 FI graduates from 2019/2020 school year attend Nelson HS

****CHANGES MADE**** Starting September 2021, all grade 8 ENG and FI graduates in Samuel Curtis Estates will attend TA Blakelock HS for grade 9 ENG and FI

➤ refer to "Option 1a (Elementary)" for elementary school boundary and program details

Notes:

2019 is enrolment as of October 15, 2019

ENG = English Program (9-12)

FI = French Immersion Program (9-12)

ESS = Essential Program (9-12)

IB = International Baccalaureate Program (9-12)

SPED = Special Program