

Samuel Curtis Estates (ERA 111) Boundary Review

Introductions



Agenda

7:00 PM **Information Presentation**

- Welcome and Purpose of Meeting
- Introductions
- Boundary Review Process
- Criteria & Option Selection Process
- Presentation of Options 1 and 2
- Community Input Process
- Next Steps and Timeline for Decision

7:30 PM **Open House**

- Staff available at stations around the room to answer questions

Why A Boundary Review?

Historically, the area known as “Samuel Curtis Estates” has been directed to Burlington schools because of proximity to existing Burlington schools and relative isolation from other existing residential in ERA 111. With the redevelopment of the Petro Canada lands (now known as the “Lakeshore Woods” community) and release of future school property, there has been interest in redirecting public school students from Burlington to Oakville schools in ERA 112.

At the October 2, 2019 Board meeting, HDSB Trustees approved a motion to initiate the process to establish a boundary review

Be it resolved that the Halton District School Board direct staff to recommence an elementary and secondary school boundary review for the Samuel Curtis Estates subdivision (ERA 111), which will include schools in ERA 103 (Frontenac PS, Mohawk Gardens PS , and Pineland PS) and SRA 100 (Nelson HS and Robert Bateman HS), as well as schools in ERA 112 (Eastview PS, Gladys Speers PS, Pine Grove PS) and SRA 102 (T.A. Blakelock HS); with an expected completion date of no later than Feb. 2020.

Why Now?

Samuel Curtis Estates students originally directed to Burlington schools due to proximity and relative isolation to neighbouring Oakville communities and schools.

- Lakeshore Woods property released as potential future school site due to lack of need (e.g., accommodation available in nearby Oakville schools).
- Burlington Secondary Program Accommodation Review led to amalgamation of Robert Bateman HS and Nelson HS, which will increase student enrolment at Nelson HS.
- Requests for community members to attend schools in their community.

Boundary Review Steering Committee

Family of Schools Superintendent(s) of all affected areas

Rob Eatough - Chair of BRSC
Julie Hunt Gibbons

Superintendents of Programs

Cristina Salmini (Elementary)
Julie Hunt Gibbons (Secondary)

Superintendent of Business

Roxana Negoï

Planning Department

Dom Renzella (General Manager)
Laureen Choi (Senior Analyst)
Mitch Gundy (Analyst)

Trustees for all of the affected areas

Trustee Tracey Ehl Harrison
Trustee Amy Collard

Boundary Review Committee Chair (appointed by
Director and Chair of the Board)

Trustee Tanya Rocha (Co-Chair of BRC)
Scott Podrebarac (Co-Chair of BRC)

Superintendent of Student Services

Mark Zonneveld

Role of the Steering Committee

A Boundary Review Steering Committee is established to lead the school boundary review process.

- Determine and communicate which schools are part of the Boundary Review Process
- Generate initial boundary options
- Recommend preferred option(s) to Administrative Council and the Director
- Make the determination as to which consultation process pathway will be utilized. The options are:
 - consult with the community through Public Information Meetings regarding the Boundary Review Committee's preferred option(s); **OR**
 - inform the community of the recommended option(s)

Who's Potentially Impacted

Number of HDSB students in Samuel Curtis Estates

** as of October 15, 2019*

School	Total
Mohawk Gardens PS (JK-6 ENG)	16
Pineland PS (8 ENG, 2-8 FI)	11
Nelson HS (9-12 ENG and FI)	9
Robert Bateman HS (10-12 ENG)	4
Other	5
Grand Total	45

Consultation Pathway #2

Pathway #2: Informing the Community

- Communication to residents living in the Samuel Curtis Estates subdivision
- School Councils in ERA 111, 112, & 103 and SRA 100 & 102 were informed and updated regularly
- Information posted on the Board website (e.g., Q & A, Updates)
- Email address available to respond to receive and respond to questions

A Boundary Review Committee (BRC) was not required, given:

- there are limited possible options for review

Pathway #2 Timeline	Dates
Director Announces Boundary Review	Oct. 2, 2019
Boundary Review Steering Committee (BRSC)	Oct. - Dec. 2019
Recommendation to the Board	Nov. 20, 2019
Recommendation to the Board for Approval	Dec. 4, 2019

Criteria to Measure Impact & Effectiveness of Boundary Options

Possible criteria could include but is not limited to:

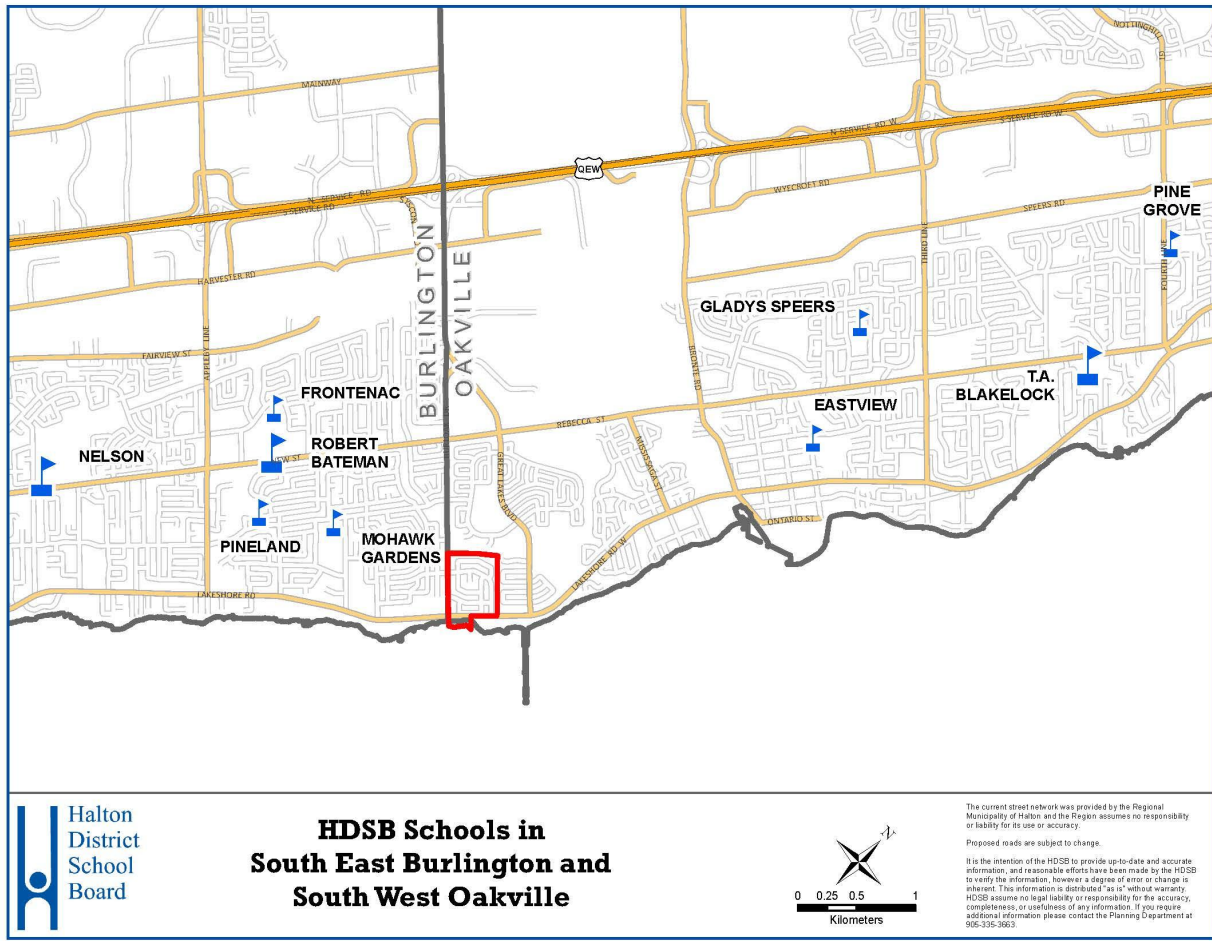
- Viability of Program
- Proximity to schools
- Balance of overall enrolment
- Stable, long-term boundaries
- Transportation
- Fiscal Responsibility
- Student Experience
- Other

Samuel Curtis Estates Map



Samuel Curtis Estates Map

School Locations



Current Boundaries For Samuel Curtis Estates (2019/2020)

School	Program	Grade(s)	Notes
Mohawk Gardens PS	ENG	JK to 6	
Frontenac PS	ENG	7	
Pineland PS	ENG	8	Sept 2020 - will become a 2 to 8 FI school
Pineland PS	FI	2 to 8	
Nelson HS	ENG	9	
Robert Bateman HS	ENG	10 to 12	June 2020 - closes
Nelson HS	FI	9 to 12	

Option 1 (elem) / 1 (sec) for Sept 2020 for existing students in Samuel Curtis Estates

School	Program	Grade(s)	Notes
Gladys Speers PS	ENG	JK to 6	
Eastview PS	ENG	7	
Frontenac PS	ENG	8	Sept 2021 - students will attend T.A. Blakelock HS
Pine Grove PS	FI	2 to 7	
Pineland PS	FI	8	Sept 2021 - students will attend T.A. Blakelock HS
T.A. Blakelock HS	ENG and FI	9	
Nelson HS	ENG and FI	10 to 12	These students remain at Nelson HS until graduation

Option 1a (elem) / 1a (sec) for Sept 2020 for existing students in Samuel Curtis Estates

School	Program	Grade(s)	Notes
Gladys Speers PS	ENG	JK to 5	
Mohawk Gardens PS	ENG	6	Sept 2021 - students will attend Eastview PS for Gr7
Eastview PS	ENG	7	
Frontenac PS	ENG	8	Sept 2021 - students will attend T.A. Blakelock HS
Pine Grove PS	FI	2 to 7	
Pineland PS	FI	8	Sept 2021 - students will attend T.A. Blakelock HS
Nelson HS	ENG and FI	9 to 12	These students remain at Nelson HS until graduation

Option 2 (elem) / 2 (sec) for Sept 2020 for existing students in Samuel Curtis Estates

School	Program	Grade(s)	Notes
Eastview PS	ENG	JK to 7	
Frontenac PS	ENG	8	Sept 2021 - students will attend T.A. Blakelock HS
Pine Grove PS	FI	2 to 7	
Pineland PS	FI	8	Sept 2021 - students will attend T.A. Blakelock HS
T.A. Blakelock HS	ENG and FI	9	
Nelson HS	ENG and FI	10 to 12	These students remain at Nelson HS until graduation

Option 2 (elem) / 2a (sec) for Sept 2020 for existing students in Samuel Curtis Estates

School	Program	Grade(s)	Notes
Eastview PS	ENG	JK to 7	
Frontenac PS	ENG	8	Sept 2021 - students will attend T.A. Blakelock HS
Pine Grove PS	FI	2 to 7	
Pineland PS	FI	8	Sept 2021 - students will attend T.A. Blakelock HS
Nelson HS	ENG and FI	9 to 12	These students remain at Nelson HS until graduation

Initial Options and Maps

Guiding Questions

- *Which option do you feel has the most promise?*
- *What can you offer to make each option better?*
- *Is there an option that you can NOT live with? Why?*
- *What did we miss (e.g., alternate options)?*

Feedback Process

- Laptop computers available to complete feedback at this meeting.
- Further questions or comments please contact the Planning Department at [*samuelcurtisreview@hdsb.ca*](mailto:samuelcurtisreview@hdsb.ca)
- Personal Public Consultation Feedback Forms are available online at www.hdsb.ca

Deadline for feedback is Monday, November 4th.

Next Steps

- Feedback from the public consultation process will be collated and provided to the Boundary Review Steering Committee for review.
- The BRSC will use this information when making their recommendation(s) to the Director.
- Director takes the recommended option(s) to Trustees and/or may revise the recommended option(s) prior to taking it to Trustees.
- Trustees will make final decision on the boundary.

Before You Leave

- Visit a station in one of the corners
- Provide your feedback via the laptops at the back of the hall
- Visit www.hdsb.ca and go to third slider or search.... “Samuel Curtis Estates Boundary Review “

www.hdsb.ca

The screenshot displays the Halton District School Board (HDSB) website. The top navigation bar is blue and contains the HDSB logo, a search bar with the placeholder text "What are you looking for?", a "Translate" button with a globe icon, and a yellow "I'd Like to..." button. Below the navigation bar, a horizontal menu lists "Parents", "Students", "Schools", "Learning and Resources", and "Our Board". The main content area features a large banner with a background image of a construction site. Overlaid on the image are the names of the municipalities: "Milton", "Oakville", and "Burlington". The banner text reads "School Boundary Reviews" in large white letters, with the subtitle "Learn about current boundary reviews and timelines" below it. On the right side of the banner, there are social media icons for Facebook, Twitter, and Instagram. At the bottom of the banner, there is a series of five dots, with the fourth dot highlighted in yellow, and a pause icon on the far right.

Halton District School Board

What are you looking for?

Translate

I'd Like to...

Parents Students Schools Learning and Resources Our Board

Milton

Oakville

Burlington

School Boundary Reviews

Learn about current boundary reviews and timelines

www.hdsb.ca