

Halton District School Board

Report Number: 21027

Date: February 10, 2021

FOR DECISION

TO: The Chair and Members of the Halton District School Board

FROM: Colette Ruddock, Superintendent of Education
Stuart Miller, Director of Education

RE: **Oakville To Be Determined Area Boundary Review Study**
Trafalgar Road and Dundas Street East

At the October 21, 2020 Board meeting the Board of Trustees approved the following Recommendation as per [Board Report 20104](#):

“Be it resolved that the Halton District School Board direct staff to undertake an elementary school boundary review for the To Be Determined Area, located in the undeveloped residential area at the north-east corner of Trafalgar Road and Dundas Street East to the south-west corner of Highway 407 and 403 interchange, which will include Oakville schools in ERA 118, ERA 116, and ERA 117; with an expected completion date no later than February 2021.”

RECOMMENDATION:

Whereas the Oakville To Be Determined Area is defined as the undeveloped residential area at the north-east corner of Trafalgar Road and Dundas Street East to the south-west corner of Highway 407 and 403 interchange, as presented in Appendix A of Report 21027;

Whereas elementary students that currently reside within the rural areas within the Oakville To Be Determined Area maintain their current accommodations,

Be it resolved that the Halton District School Board direct elementary students to the following school effective immediately:

- ***Falgarwood Public School for Kindergarten to Grade 8 for English programming***
 - ***Munn’s Public School for Grades 2-8 for French Immersion programming***
-

Background:

In January 2019, the Dr. David R. Williams PS (Oakville NE #2 ps) Boundary Review resulted in the creation of a To Be Determined (TBD) Area as per [Board Report 19024](#). This Oakville TBD Area is a future development area located at the north-east corner of Trafalgar Road and Dundas Street East to the south-west corner of Highway 407 and 403 interchange.

Located within the TBD Area are nine (9) development applications that have been circulated to date by the Town of Oakville where there are approximately 4,600 residential units. Construction is currently underway, and the developer has confirmed that home occupancies will begin April 2021.

There are currently four (4) students that live on rural properties along Burnhamthorpe Road East -- two (2) students at River Oaks PS and two (2) students at Oodenawi PS. These students will not be impacted by this boundary review and will remain at their current schools until graduation.

It should be noted that the TBD Area is directed to White Oaks Secondary School for English and French Immersion programming. The secondary school boundaries are not being considered as part of this review.

As per the HDSB Boundary Review Administrative Procedure, Board staff concluded it prudent to designate elementary schools to serve the Oakville TBD Area.

Discussion:

A Boundary Review Steering Committee (BRSC) was established to lead the school boundary review process, including assigned Family of School Superintendents & Trustees, affected Trustees, and Planning staff. For a full list of members, please refer to Appendix B.

Halton District School Board

The BRSC reviewed school enrolments, school capacities and programs identified in the 2019/2020 Long Term Accommodation Plan (LTAP) and identified elementary schools within Oakville 116, 117 and 118 that could accommodate students in the TBD Area. Elementary schools identified as potential options included Falgarwood PS, Munn's PS and River Oaks PS.

It is understood that this boundary review is to establish boundaries for the interim until the Oakville NE #3 public school boundary review is initiated. The [2019-2020 Long Term Accommodation Plan](#) indicates that the tentative opening for Oakville NE #3 PS is September 2023. As the Board was not successful in acquiring the necessary funding for the Oakville #3 PS in the most recent Capital Priorities announcement, and the uncertainty as to when the next program will be released, it is now estimated that the earliest opening date for Oakville NE #3 PS is September 2024. The tentative opening date assumes timely funding from the Ministry of Education, the timely acquisition of the school site, and obtaining the required municipal approvals/issuance of building permits.

In consideration of the above, the recommended accommodation plan must ensure the recipient schools can accommodate students generated from new growth until such a time Oakville NE #3 PS is completed and a school boundary review is completed to define its boundaries, while providing as much flexibility in the opening timing.

Transportation was not a consideration in the Boundary Review, as all students will be transported to a holding school.

As per the [HDSB Boundary Review Administrative Procedure](#), the BRSC concluded that Consultation Process Pathway #2 is appropriate for this Boundary review, for the following reasons:

1. The area being redirected to a holding school does not have any existing residents, therefore no parent community. Existing rural students are not impacted by the results;
2. There were limited options available for review;
3. The area in question does not have an elementary home school for ENG and FI, requiring an expedited process to obtain approvals prior to occupancy of homes by April 2021;
4. The recommended options are interim holding solutions.

Although there are no existing residents in the area, to inform the future communities of the boundary review initiation, a [letter dated December 17, 2020](#) was sent to the developer of the first phase of development in the TBD Area for their sales office to share with current and potential home purchasers in the TBD Area. Subsequently, the school communities that may be impacted by the outcome of this boundary review were informed through a SchoolMessenger email on January 26, 2021: [Falgarwood PS and Munn's PS](#). Copies of the letters are posted on the Board website under the [Oakville TBD Area Boundary Review](#). An update to the developer and impacted school communities will be sent to notifying them and their clients of the recommended option once presented to the Board as part of this report. All updates and information will also be posted on the Board website ([link here](#)).

For the rural students that presently reside within the TBD area, a notice will be sent to families in this area to confirm they will not be impacted by this boundary review and will remain at their current schools, unless they decide otherwise.

Four (4) initial options were generated by the Planning Department and presented to the BRSC in January 2021 (Appendix C).

The BRSC prioritized and established decision making criteria, analyzed proposed options and further explored data (including transportation, physical space and enrolment) and addressed questions by accessing Board staff as required.

The BRSC reviewed all options in the context of the criteria set in the Board's Administrative Procedure. Those that were most pertinent to this review included but were not limited to:

1. Stability of the solution to adequately accommodate students within minimal redirections until such a time Oakville NE #3 ps opens;
2. Distribution of growth pressures;

Halton District School Board

3. A balance of overall enrolment in each school in the review area to maximize student access to programs and resources;
4. Stable, long-term boundaries;
5. Keeping cohorts together.

Each option was examined, with respect to strengths and areas of concern, as per the criteria established by the BRSC. The viability of each option was weighed against the tentative opening for Oakville NE #3 PS of September 2024, which was pushed by one (1) year from what is indicated in the 2019 LTAP.

Status Quo: Enrolment Trends of Impacted Schools

Below is a brief summary of the enrolment trends of the schools selected as part of this boundary review process. Note that none of the status quo projections include the enrolment generated by the Oakville TBD area:

1. **Munn's PS - French Immersion Program:** Enrolment is projected to remain relatively stable between 2020 to 2030, where the average utilization of the school will average 103% overall, requiring up to two (2) portables over the long-term.
2. **Falgarwood PS - English Program & Life Skills:** Enrolment is projected to remain relatively stable, with slight growth between 2020-2030. Utilization is expected to increase from 97% to 105% over this period, potentially requiring approximately one (1) portable over the long-term.
3. **River Oaks PS - English Program:** Enrolment is projected to grow significantly between 2020 to 2030, as River Oaks is holding a significant portion of North Oakville's future student enrolment until such a time Oakville NE #3 ps opens to offset pressures (resulting from a previous Boundary Review). As such, utilization is expected to increase from 96% to 153% over ten (10) years, surpassing its maximum portable capacity by 2025.

Options #1 to #4: Review and Discussion

The BRSC met for two meetings on January 15, 2021 and January 22, 2021 to discuss the four (4) options. The BRSC reviewed all four (4) options while having regard to the criteria set in the Board's Administrative Procedure. A summary of the discussions has been provided in Appendix C, which outlines the option's accommodation plan, implementation plan, considerations and concerns, and observations from the BRSC on their effectiveness in meeting the criteria.

Recommended Option:

In consideration of the criteria set defined as part of this study, the BRSC identified Option #2 as the preferred option for the following reasons:

1. Falgarwood PS has the capacity to hold students temporarily until September 2024, which is the tentative opening date of Oakville NE#3 ps. No redirection of students is required as part of this option. In the event a delay in opening occurs, there is flexibility to introduce an additional four (4) portables on site with minor site improvements (e.g. parking);
2. Option #2 succeeds in distributing growth pressures and enrolment, by redirecting new students generated from North Oakville to Falgarwood PS, instead of adding further pressures to River Oaks PS which is already holding students;
3. Option #2 succeeds in providing a long-term holding option until such a time the neighbourhood school can be introduced; and,
4. Option #2 succeeds in keeping elementary cohorts together. Secondary cohorts will be divided as the TBD Area did not include a secondary school component.

For the above reasons, the BRSC recommended Option #2 to the Director of Education to present to the Board of Trustees for consideration and approval, and to be implemented immediately.

Halton District School Board

Conclusion:

The BRSC carefully studied the options and recommended Option #2 to the Director of Education as the option that best meets the criteria identified by the committee and in alignment with criteria identified in the HDSB Boundary Review Administrative Procedure.

The recommended option allows students generated from the TBD Area to attend their designated schools (Falgarwood PS and Munn's PS) until such a time Oakville NE #3 PS opens and a new boundary is defined, while minimizing the number of transitions. The option also provides a balanced distribution of enrollment and aligned elementary cohorts. It is believed having all students from the TBD Area within the same English and French Immersion schools will further support an ongoing sense of community within the area.

This boundary redirection will be effective immediately as the first occupancy of residential units will begin April 2021.

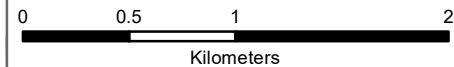
Board staff will continue to monitor enrolment projections and accommodation pressures in Oakville elementary schools through the annual review of the Long Term Accommodation Plan.

Respectfully submitted,

*Colette Ruddock
Superintendent of Education*

*Stuart Miller
Director of Education*

TBD Area Map



The current street network was provided by the Regional Municipality of Halton and the Region assumes no responsibility or liability for its use or accuracy.

Proposed roads are subject to change.

It is the intention of the HDSB to provide up-to-date and accurate information, and reasonable efforts have been made by the HDSB to verify the information, however a degree of error or change is inherent. This information is distributed "as is" without warranty. HDSB assume no legal liability or responsibility for the accuracy, completeness, or usefulness of any information. If you require additional information please contact the Planning Department at 905-335-3663.

Boundary Review Steering Committee (BRSC):

<p>Superintendents of Education</p>	<p>Colette Ruddock Julie Hunt-Gibbons</p>
<p>Trustees</p>	<p>Kelly Amos - Oakville - Wards 5 and 7 Tanya Rocha - Oakville - Wards 3 and 6 Margo Shuttleworth - Burlington - Ward 4</p>
<p>Planning Staff</p>	<p>Fred Thibeault - General Manager Laureen Choi - Senior Analyst Mitchell Gundy - Analyst Kathie Panzer - GIS Analyst</p>

Option #1: TBD Area to River Oaks and Munn's Public Schools

TBD Area directed to:	English Program	French Immersion Program	Over School's Total Capacity prior to 2024?
Falgarwood PS	No impact	No impact	No
Munn's PS	-	Grades 2-8	No
River Oaks PS	Kindergarten-Grade 8	-	Yes (Surpassed in 2022)

Implementation:

1. TBD Area directed to:
 - a. River Oaks PS for the English Program
 - b. Munn's PS for the French Program

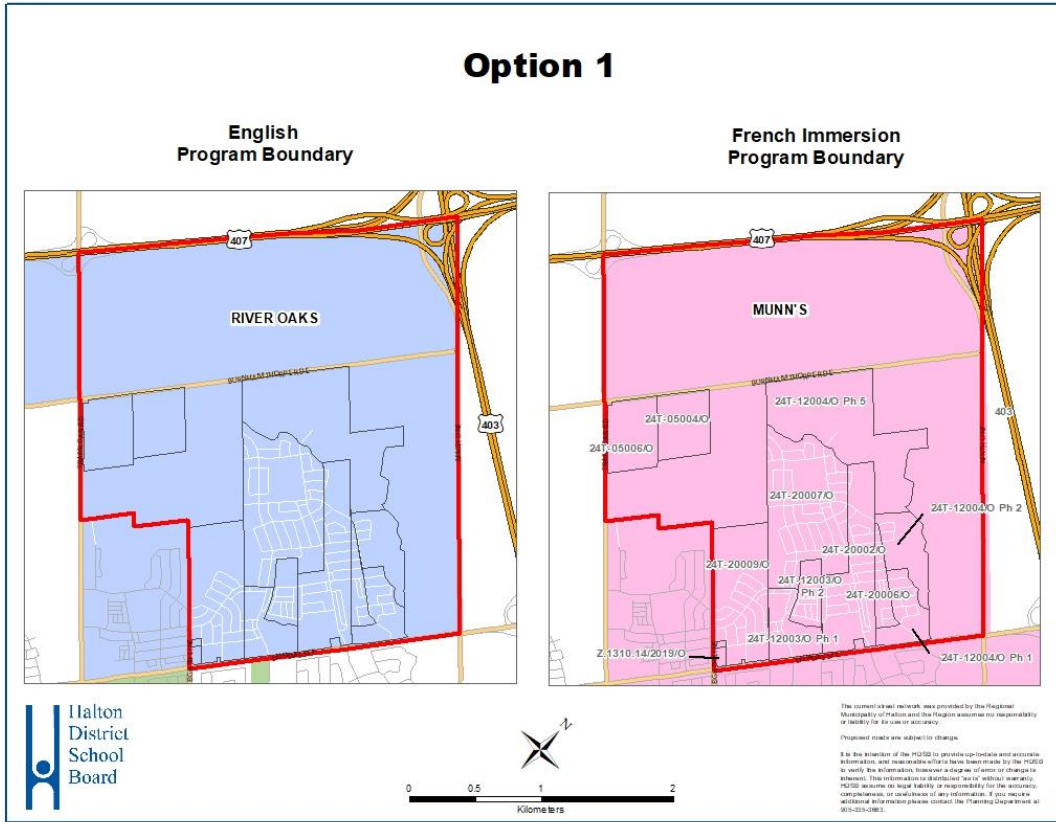
Option #1 Considerations :

- 1) River Oaks PS is projected to surpass 100% utilization by 2021, and exceed its Total Capacity by 2022, requiring more than the maximum 6 portables on site. This does not align with the Oakville #3 PS tentative opening date of 2024, to alleviate pressures.
- 2) Munn PS enrolment is projected to increase over time as additional students are redirected from the TBD Area. Note that Munns PS is not projected to reach its maximum capacity throughout the projection period.
- 3) All elementary students in the TBD Area will be eligible for transportation since students will cross Dundas Street East.

Areas of concern for Option #1:

1. River Oaks PS reaches Total Capacity by September 2022, requiring students to be redirected to another school until such a time Oakville #3 PS opens in September 2024, at the earliest, and the Boundary Review process is completed and implemented.
2. A split grade 2 FI cohort is created where River Oaks PS grade 1 students will be directed to Munn's PS grade 2 FI in the TBD Area. River Oaks PS students south of Dundas Street East are directed to Sunningdale PS for FI programming.
3. A split grade 8 FI cohort is created where Munn's PS students in the TBD Area will be directed to White Oaks SS. Munn's PS students south of Dundas Street East are directed to Iroquois Ridge HS.

In reviewing Option #1, the BRSC concluded the accommodation plan presented as part of this options does not meet criteria of sufficiently accommodating students with minimal disruption until Oakville #3 PS opens. Moreover, this option adds a significant amount of additional pressure to River Oaks PS, which is already holding students in the North Oakville Secondary Plan area.



Oakville NE #3 ps (tentative opening)																
School	OTG	Portable	Total Capacity	Program	2020	2021	2022	2023	2024	2025	2026	2027	2028	2029	2030	Notes
Falgarwood PS	536	Maximum: 8 Port: Cap: 184	720	ENG	502	486	484	517	515	519	502	510	529	547	545	- JK-8 ENG school, contains LifeSkills program - ENG holding school for north of Dundas between Dr. David R. Williams PS opened Sept 2020 - continues to hold ENG students that were not in the Dr. David R. Williams PS ENG boundary
				FI	0	0	0	0	0	0	0	0	0	0	0	
	SC-SPED	17	17	17	17	17	17	17	17	17	17	17	17	17		
	Total	519	503	501	534	532	536	519	527	546	564	562				
	Percent Utilization				97%	94%	93%	100%	99%	100%	97%	98%	102%	105%	105%	
	Available (+) / Shortage (-) of Pupil Places				17	33	35	2	4	0	17	9	-10	-28	-26	
Estimate number of portables				1	0	0	0	0	0	0	0	0	1	1		
Munn's PS	492	Maximum: 12 Port: Cap: 276	768	ENG	0	0	0	0	0	0	0	0	0	0	0	- Gr 2-8 FI school - holds FI students north of Dundas and east of Trafalgar - will hold FI TBD students
				FI	517	490	489	499	518	528	543	576	595	615	626	
	SC-SPED	0	0	0	0	0	0	0	0	0	0	0	0			
	Total	517	490	489	499	518	528	543	576	595	615	626				
	Percent Utilization				105%	100%	99%	101%	105%	107%	110%	117%	121%	125%	127%	
	Available (+) / Shortage (-) of Pupil Places				-25	2	3	-7	-26	-36	-51	-84	-103	-123	-134	
Estimate number of portables				2	0	0	0	1	2	2	4	4	5	6		
River Oaks PS	636	Maximum: 6 Port: Cap: 138	774	ENG	609	702	799	898	994	1122	1260	1395	1538	1684	1876	- JK-8 ENG school - holds ENG students north of Dundas, east of Trafalgar; north of Dundas, west of Neyagawa; north of Burnhamthorpe between Neyagawa and Trafalgar - will hold ENG TBD students
				FI	0	0	0	0	0	0	0	0	0	0	0	
	SC-SPED	0	0	0	0	0	0	0	0	0	0	0	0			
	Total	609	702	799	898	994	1122	1260	1395	1538	1684	1876				
	Percent Utilization				96%	110%	126%	141%	156%	176%	198%	219%	242%	265%	295%	
	Available (+) / Shortage (-) of Pupil Places				27	-66	-163	-262	-358	-486	-624	-759	-902	-1048	-1240	
Estimate number of portables				0	3	7	11	16	21	27	33	39	46	54		
To Be Determined				ENG	Over Max Capacity										- no current students, homes currently under construction - closings expected to begin April 2021 - TBD students have been moved to River Oaks PS and Munn's PS in this option	
				FI												
				SC-SPED												
				Total												
	Percent Utilization															
	Available (+) / Shortage (-) of Pupil Places				0	0	0	0	0	0	0	0	0	0		0
Estimate number of portables				0	0	0	0	0	0	0	0	0	0	0		
Study Area Total					1645	1695	1789	1931	2044	2186	2322	2498	2679	2863	3064	

Option #2: TBD Area to Falgarwood and Munn’s Public Schools

TBD Area directed to:	English Program	French Immersion Program	Over School’s Total Capacity prior to 2024?
Falgarwood PS	Kindergarten-Grade 8		No (Surpasse in 2024)
Munn’s PS		Grades 2-8	No
River Oaks PS	No impact	No impact	No

Implementation:

1. TBD Area directed to:
 - a. Falgarwood PS for the English Program
 - b. Munn’s PS for the French Program

Option #2 Considerations :

1. Falgarwood PS is projected to surpass 100% utilization by 2021, and exceed its Total Capacity by 2024, requiring more than max 8 portables on site. This aligns with the Oakville #3 PS tentative opening date of 2024, to alleviate pressures.
2. River Oaks PS is projected to reach OTG capacity by 2021 and reach Total Capacity by 2025. The school will remain over Total Capacity until 2030. *Note that River Oaks PS reaches Total Capacity without the TBD Area.*
3. Munn PS enrolment is projected to increase over time as additional students are redirected from the TBD Area. Note that Munns PS is not projected to reach its maximum capacity throughout the projection period.
4. All elementary students in the TBD Area will be eligible for transportation since students will cross Dundas Street East.

Areas of concern for Option #2:

1. Falgarwood PS reaches Total Capacity by September 2024, which aligns with the tentative opening date for Oakville #3 PS. In the event of a delayed opening, students may need to be redirected to another school, unless portable capacity can be increased to 12 portables.
2. Split grade 8 ENG and FI cohorts are created where Falgarwood PS and Munn’s PS students in the TBD Area will be directed to White Oaks SS. Falgarwood PS and Munn’s PS students south of Dundas Street East are directed to Iroquois Ridge HS.

The BRSC preferred the accommodation plan presented as part of Option #2, as it meets the criteria of sufficiently accommodating students with minimal disruption until Oakville #3 PS opens. Moreover, this option spreads the pressures between Falgarwood and River Oaks PS, both which will be holding students in the North Oakville Secondary Plan area temporarily.

Option 2

English Program Boundary



French Immersion Program Boundary



The content of all research was provided by the Regional Municipality of Halton and the Region assumes no responsibility or liability for its use or accuracy.
 Proposed maps are subject to change.
 It is the intention of the RMOH to provide up-to-date and accurate information, and reasonable efforts have been made by the RMOH to verify the information, however a change of some or change to the information, this information is distributed "as is" without warranty. RMOH assumes no legal liability or responsibility for the accuracy, completeness or timeliness of any information. If you require additional information please contact the Planning Department at 905-882-0865.

Oakville NE #3 ps (tentative opening)

Over Max Capacity

School	OTG	Portable	Total Capacity	Program	2020	2021	2022	2023	2024	2025	2026	2027	2028	2029	2030	Notes		
Falgarwood PS	536	Maximum: 8 Port: Cap: 184	720	ENG	502	525	578	669	758	863	950	1065	1196	1328	1445	- JK-8 ENG school, contains LifeSkills program - ENG holding school for north of Dundas before Dr. David R. Williams PS opened Sept 2020 - continues to hold ENG students that were not in the Dr. David R. Williams PS ENG boundary - will hold ENG TBD students		
				FI	0	0	0	0	0	0	0	0	0	0	0		0	
				SC-SPED	17	17	17	17	17	17	17	17	17	17	17		17	17
				Total	519	542	595	686	775	880	967	1082	1213	1345	1462			
	Percent Utilization				97%	101%	111%	128%	145%	164%	180%	202%	226%	251%	273%			
	Available (+) / Shortage (-) of Pupil Places				17	-6	-59	-150	-239	-344	-431	-546	-677	-809	-926			
Estimate number of portables				1	0	3	7	10	15	19	24	29	35	40				
Munn's PS	492	Maximum: 12 Port: Cap: 276	768	ENG	0	0	0	0	0	0	0	0	0	0	0	- Gr 2-8 FI school - holds FI students north of Dundas and east of Trafalgar - will hold FI TBD students		
				FI	517	490	489	499	518	528	543	576	595	615	626			
				SC-SPED	0	0	0	0	0	0	0	0	0	0	0		0	
				Total	517	490	489	499	518	528	543	576	595	615	626			
	Percent Utilization				105%	100%	99%	101%	105%	107%	110%	117%	121%	125%	127%			
	Available (+) / Shortage (-) of Pupil Places				-25	2	3	-7	-26	-36	-51	-84	-103	-123	-134			
Estimate number of portables				2	0	0	0	1	2	2	4	4	5	6				
River Oaks PS	636	Maximum: 6 Port: Cap: 138	774	ENG	609	663	705	746	751	778	812	840	871	903	976	- JK-8 ENG school - holds ENG students north of Dundas, east of Trafalgar; north of Dundas, west of Neyagawa; north of Burnhamthorpe between Neyagawa and Trafalgar		
				FI	0	0	0	0	0	0	0	0	0	0	0			
				SC-SPED	0	0	0	0	0	0	0	0	0	0	0		0	
				Total	609	663	705	746	751	778	812	840	871	903	976			
	Percent Utilization				96%	104%	111%	117%	118%	122%	128%	132%	137%	142%	153%			
	Available (+) / Shortage (-) of Pupil Places				27	-27	-69	-110	-115	-142	-176	-204	-235	-267	-340			
Estimate number of portables				0	1	3	5	5	6	8	9	10	12	15				
To Be Determined				ENG					Over Max Capacity							- no current students, homes currently under construction - closings expected to begin April 2021 TBD students have been moved to Falgarwood PS and Munn's PS in this option		
				FI														
				SC-SPED														
				Total														
	Percent Utilization																	
	Available (+) / Shortage (-) of Pupil Places				0	0	0	0	0	0	0	0	0	0	0			
Estimate number of portables				0	0	0	0	0	0	0	0	0	0	0				
Total					1645	1695	1789	1931	2044	2186	2322	2498	2679	2863	3064			

Option #3: TBD Area to Falgarwood, Munn’s and River Oaks Public Schools

TBD Area directed to:	English Program	French Immersion Program	Over School’s Total Capacity prior to 2024?
Falgarwood PS	Kindergarten-Grade 8		No
Munn’s PS		Grades 2-8	No
River Oaks PS	Kindergarten-Grade 8		Yes (Surpassed in 2023)

Implementation:

1. TBD Area directed to:
 - a. River Oaks PS & Falgarwood PS for the English Program. TBD Area divided by total number of new dwelling occupancies between April 2021 and September 2024, while maintaining neighbourhood cohesion.
 - b. Munn’s PS for the French Program

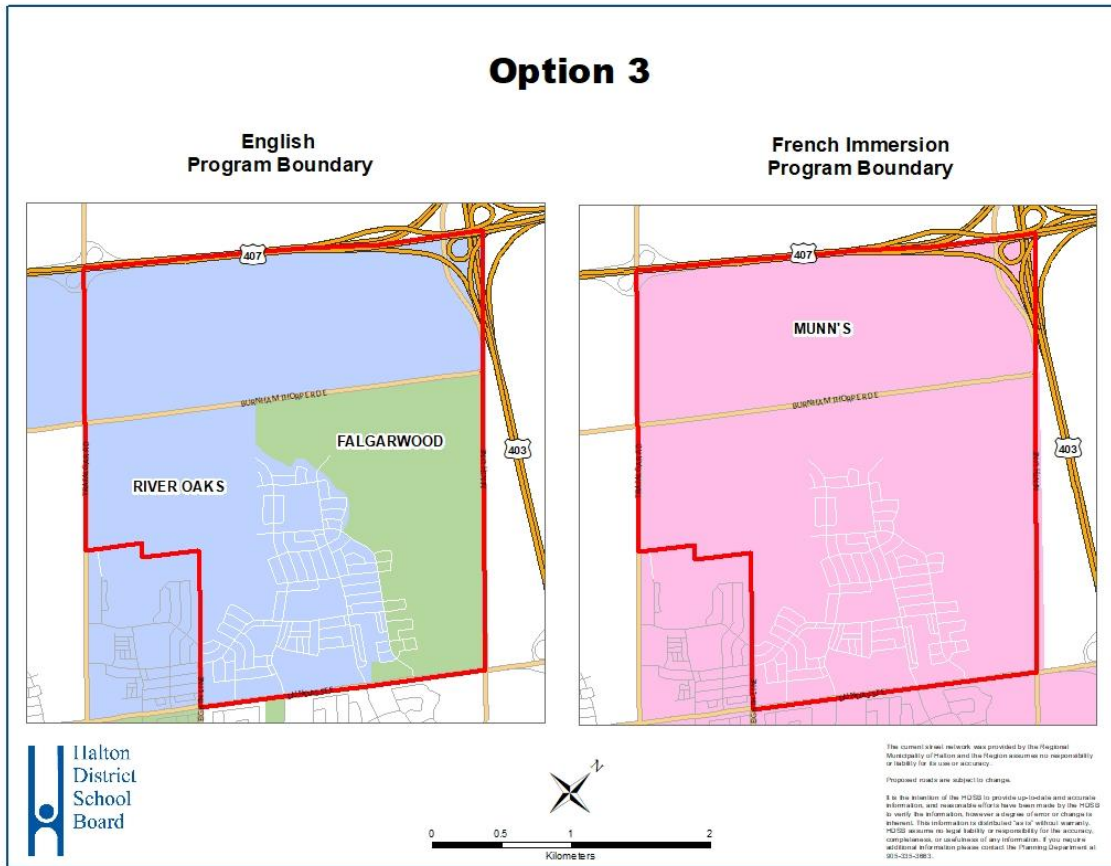
Option #3 Considerations :

1. Falgarwood PS is projected to surpass 100% utilization by 2021, and remain below its Total Capacity until 2030. This aligns with the Oakville #3 PS tentative opening date of 2024, to alleviate pressures.
2. River Oaks PS is projected to surpass 100% utilization by 2021, and exceed its Total Capacity by 2023, requiring more than the maximum 6 portables on site. This does not align with the Oakville #3 PS tentative opening date of 2024, to alleviate pressures.
3. Munn PS enrolment is projected to increase over time as additional students are redirected from the TBD Area. Note that Munns PS is not projected to reach its maximum capacity throughout the projection period.
4. All elementary students in the TBD Area will be eligible for transportation since students will cross Dundas Street East.

Areas of concern for Option #3:

1. River Oaks PS reaches Total Capacity by September 2023, requiring students to be redirected to another school until such a time Oakville #3 PS opens in September 2024, at the earliest, and the Boundary Review process is completed and implemented.
2. A split grade 2 FI cohort is created where River Oaks PS grade 1 students will be directed to Munn’s PS grade 2 FI in the TBD Area. River Oaks PS students south of Dundas Street East are directed to Sunningdale PS for FI programming.
3. Split grade 8 ENG and FI cohorts are created where Falgarwood PS and Munn’s PS students in the TBD Area will be directed to White Oaks SS. Falgarwood PS and Munn’s PS students south of Dundas Street East are directed to Iroquois Ridge HS.
4. Students in the TBD Area will attend three different schools. Portions of the boundary proposed between Falgarwood PS and River Oaks PS are based on the preliminary road network presented in draft plan submissions that may change with future revisions.

In reviewing Option #3, the BRSC concluded the accommodation plan presented as part of this options does not meet criteria of sufficiently accommodating students with minimal disruption until Oakville #3 PS opens, as River Oaks will surpass its maximum portable capacity in advance of the latter. Moreover, this option adds additional pressure to River Oaks PS, albeit less than Option #1, which is already holding students in the North Oakville Secondary Plan area.



School	OTG	Portable	Total Capacity	Program	Oakville NE #3 ps (tentative opening)											Over Max Capacity	Notes
					2020	2021	2022	2023	2024	2025	2026	2027	2028	2029	2030		
Falgarwood PS	536	Maximum: 8 Port: Cap: 184	720	ENG	502	525	567	608	609	611	594	602	642	686	711	- JK-8 ENG school, contains LifeSkills program - ENG holding school for north of Dundas before Dr. David R. Williams PS opened Sept 2020 - continues to hold ENG students that were not in the Dr. David R. Williams PS ENG boundary - will hold ENG TBD students	
				FI	0	0	0	0	0	0	0	0	0	0	0		
				SC-SPED	17	17	17	17	17	17	17	17	17	17	17		17
				Total	519	542	584	625	626	628	611	619	659	703	728		
	Percent Utilization				97%	101%	109%	117%	117%	117%	114%	116%	123%	131%	136%		
	Available (+) / Shortage (-) of Pupil Places				17	-6	-48	-89	-90	-92	-75	-83	-123	-167	-192		
Estimate number of portables				1	0	2	4	4	4	3	4	5	7	8			
Munn's PS	492	Maximum: 12 Port: Cap: 276	768	ENG	0	0	0	0	0	0	0	0	0	0	0	- Gr 2-8 FI school - holds FI students north of Dundas and east of Trafalgar - will hold FI TBD students	
				FI	517	490	489	499	518	528	543	576	595	615	626		
				SC-SPED	0	0	0	0	0	0	0	0	0	0	0		
				Total	517	490	489	499	518	528	543	576	595	615	626		
	Percent Utilization				105%	100%	99%	101%	105%	107%	110%	117%	121%	125%	127%		
	Available (+) / Shortage (-) of Pupil Places				-25	2	3	-7	-26	-36	-51	-84	-103	-123	-134		
Estimate number of portables				2	0	0	0	1	2	2	4	4	5	6			
River Oaks PS	636	Maximum: 6 Port: Cap: 138	774	ENG	609	663	715	807	901	1030	1168	1303	1424	1546	1710	- JK-8 ENG school - holds ENG students north of Dundas, east of Trafalgar; north of Dundas, west of Neyagawa; north of Burnhamthorpe between Neyagawa and Trafalgar	
				FI	0	0	0	0	0	0	0	0	0	0	0		
				SC-SPED	0	0	0	0	0	0	0	0	0	0	0		
				Total	609	663	715	807	901	1030	1168	1303	1424	1546	1710		
	Percent Utilization				96%	104%	112%	127%	142%	162%	184%	205%	224%	243%	269%		
	Available (+) / Shortage (-) of Pupil Places				27	-27	-79	-171	-265	-394	-532	-667	-788	-910	-1074		
Estimate number of portables				0	1	3	7	12	17	23	29	34	40	47			
To Be Determined				ENG												- no current students, homes currently under construction - closings expected to begin April 2021. TBD students have been moved to Falgarwood PS, River Oaks PS and Munn's PS in this option	
				FI													
				SC-SPED													
				Total													
	Percent Utilization																
	Available (+) / Shortage (-) of Pupil Places				0	0	0	0	0	0	0	0	0	0	0		
Estimate number of portables				0	0	0	0	0	0	0	0	0	0	0			

Total	1645	1695	1788	1931	2045	2186	2322	2498	2678	2864	3064
--------------	------	------	------	------	------	------	------	------	------	------	------

Option #4: TBD Area to Falgarwood, Munn’s and River Oaks Public Schools

TBD Area directed to:	English Program	French Immersion Program	Over School’s Total Capacity prior to 2024?
Falgarwood PS	Kindergarten-Grade 8		No
Munn’s PS		Grades 2-8	No
River Oaks PS	Kindergarten-Grade 8		Yes (At max in 2023)

Implementation:

1. TBD Area directed to:
 - a. River Oaks PS & Falgarwood PS for the English Program. TBD Area divided by total number of new dwelling occupancies between April 2021 and September 2024 with a higher proportion to Falgarwood PS, while maintaining neighbourhood cohesion.
 - b. Munn’s PS for the French Program

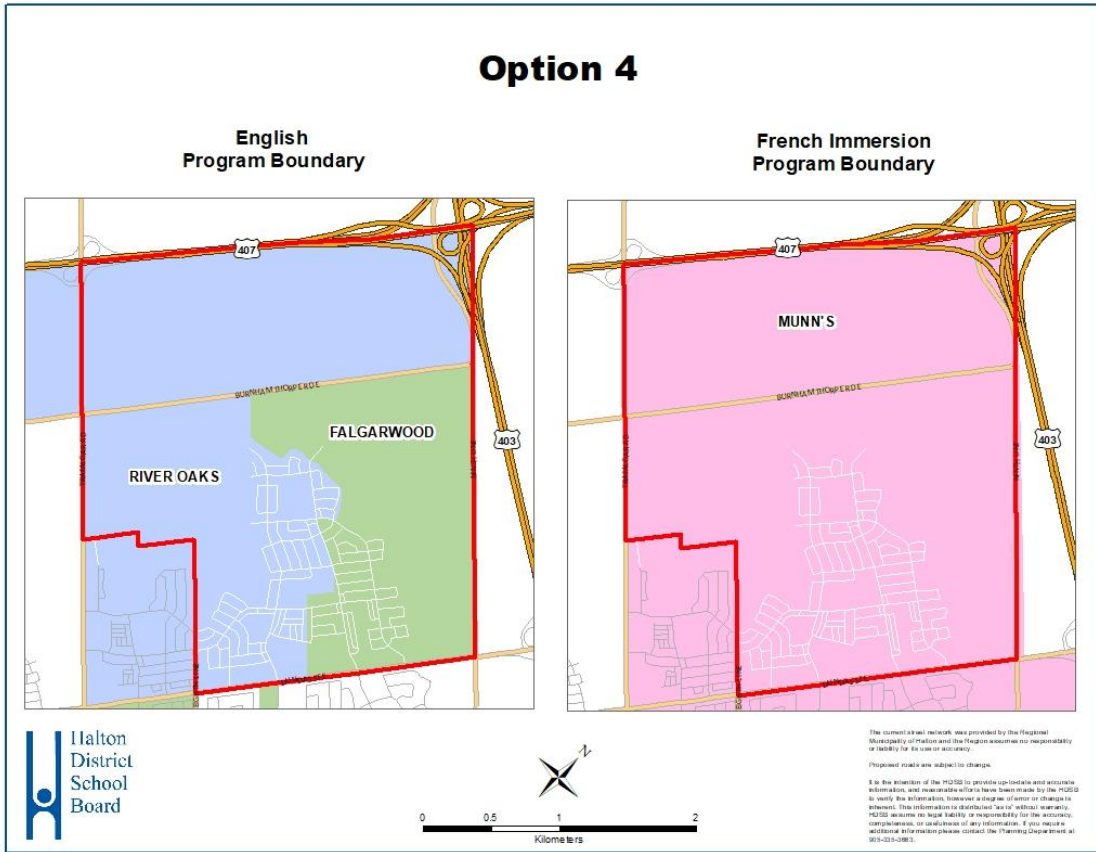
Option #4 Considerations :

1. Falgarwood PS is projected to surpass 100% utilization by 2021, and remain below its Total Capacity until 2025. This aligns with the Oakville #3 PS tentative opening date of 2024, to alleviate pressures.
2. River Oaks PS is projected to surpass 100% utilization by 2021, and reach its Total Capacity of 6 portables by 2023. The Total Capacity is surpassed in 2024. This aligns with the Oakville #3 PS tentative opening date of 2024, with very little flexibility if projections are higher than anticipated.
3. Munn PS enrolment is projected to increase over time as additional students are redirected from the TBD Area. Note that Munns PS is not projected to reach its maximum capacity throughout the projection period.
4. All elementary students in the TBD Area will be eligible for transportation since students will cross Dundas Street East.

Areas of concern for Option #4:

1. River Oaks PS reaches Total Capacity by September 2023, requiring all 6 portables on site. If projections are higher than anticipated, students must be redirected to another school until such a time Oakville #3 PS opens in September 2024, at the earliest.
2. A split grade 2 FI cohort is created where River Oaks PS grade 1 students will be directed to Munn’s PS grade 2 FI in the TBD Area. River Oaks PS students south of Dundas Street East are directed to Sunningdale PS for FI programming.
3. Split grade 8 ENG and FI cohorts are created where Falgarwood PS and Munn’s PS students in the TBD Area will be directed to White Oaks SS. Falgarwood PS and Munn’s PS students south of Dundas Street East are directed to Iroquois Ridge HS.
4. Students in the TBD Area will attend three different schools. Portions of the boundary proposed between Falgarwood PS and River Oaks PS are based on the preliminary road network presented in draft plan submissions that may change with future revisions.

In reviewing Option #4, the BRSC concluded that albeit the accommodation plan does meet the criteria of sufficiently accommodating students until Oakville #3 PS opens, there is very little margin for error in the projections, as River Oaks will reach (not exceed) its maximum portable capacity in advance of the Oakville #3 PS opening. A delay in opening and/or higher projections would result in disruption. Lastly, this option adds additional pressure to River Oaks PS, albeit less than Option #1 and #3, which is already holding students in the North Oakville Secondary Plan area.



School	OTG	Portable	Total Capacity	Program	Oakville NE #3 ps (tentative opening)											Notes	
					2020	2021	2022	2023	2024	2025	2026	2027	2028	2029	2030		
Falgarwood PS	536	Maximum: 8 Port: Cap: 184	720	ENG	502	525	567	633	659	707	736	793	865	938	967	- JK-8 ENG school, contains LifeSkills program - ENG holding school for north of Dundas before Dr. David R. Williams PS opened Sept 2020 - continues to hold ENG students that were not in the Dr. David R. Williams PS ENG boundary - will hold ENG TBD students	
				FI	0	0	0	0	0	0	0	0	0	0	0		
				SC-SPED	17	17	17	17	17	17	17	17	17	17	17		17
				Total	519	542	584	650	676	724	753	810	882	955	984		
				<i>Percent Utilization</i>	97%	101%	109%	121%	126%	135%	140%	151%	165%	178%	184%		
<i>Available (+) / Shortage (-) of Pupil Places</i>					17	-6	-48	-114	-140	-188	-217	-274	-346	-448			
<i>Estimate number of portables</i>					1	0	2	5	6	8	9	12	15	18	19		
Munn's PS	492	Maximum: 12 Port: Cap: 276	768	ENG	0	0	0	0	0	0	0	0	0	0	0	- Gr 2-8 FI school - holds FI students north of Dundas and east of Trafalgar - will hold FI TBD students	
				FI	517	490	489	499	518	528	543	576	595	615	626		
				SC-SPED	0	0	0	0	0	0	0	0	0	0	0		0
				Total	517	490	489	499	518	528	543	576	595	615	626		
				<i>Percent Utilization</i>	105%	100%	99%	101%	105%	107%	110%	117%	121%	125%	127%		
<i>Available (+) / Shortage (-) of Pupil Places</i>					-25	2	3	-7	-26	-36	-51	-84	-103	-123	-134		
<i>Estimate number of portables</i>					2	0	0	0	1	2	2	4	4	5	6		
River Oaks PS	636	Maximum: 6 Port: Cap: 138	774	ENG	609	663	715	782	850	934	1025	1112	1202	1294	1454	- JK-8 ENG school - holds ENG students north of Dundas, east of Trafalgar; north of Dundas, west of Neyagawa; north of Burnhamthorpe between Neyagawa and Trafalgar	
				FI	0	0	0	0	0	0	0	0	0	0	0		
				SC-SPED	0	0	0	0	0	0	0	0	0	0	0		0
				Total	609	663	715	782	850	934	1025	1112	1202	1294	1454		
				<i>Percent Utilization</i>	96%	104%	112%	123%	134%	147%	161%	175%	189%	203%	229%		
<i>Available (+) / Shortage (-) of Pupil Places</i>					27	-27	-79	-146	-214	-298	-389	-476	-566	-658	-818		
<i>Estimate number of portables</i>					0	1	3	6	9	13	17	21	25	29	36		
To Be Determined				ENG											- no current students, homes currently under construction - closings expected to begin April 2021 TBD students have been moved to Falgarwood PS, River Oaks PS and Munn's PS in this option		
				FI													
				SC-SPED													
				Total													
				<i>Percent Utilization</i>													
<i>Available (+) / Shortage (-) of Pupil Places</i>					0	0	0	0	0	0	0	0	0	0			
<i>Estimate number of portables</i>					0	0	0	0	0	0	0	0	0	0			

Total	1645	1695	1788	1931	2044	2186	2321	2498	2679	2864	3064
--------------	------	------	------	------	------	------	------	------	------	------	------